

SECONDARY VOCATIONAL ENGLISH LISTENING AND SPEAKING



中职英语 听说教程

提高 1

主 编 ○ 雷 静 皮莉丽



重庆大学出版社

图书在版编目(CIP)数据

中职英语听说教程. 提高. 1/雷静,皮莉丽主编

. -- 重庆:重庆大学出版社,2021. 1

ISBN 978-7-5689-2548-8

I. ①中… II. ①雷… ②皮… III. ①英语—听说教
学—职业高中—教材 IV. ①G634.411

中国版本图书馆 CIP 数据核字(2021)第 020204 号

中职英语听说教程 提高 1

ZHOGNZHI YINGYU TINGSHUO JIAOCHENG TIGAO 1

主编 雷 静 皮莉丽

责任编辑:张春花 版式设计:张春花

责任校对:邹 忌 责任印制:赵 晟

*

重庆大学出版社出版发行

出版人:饶帮华

社址:重庆市沙坪坝区大学城西路 21 号

邮编:401331

电话:(023) 88617190 88617185(中小学)

传真:(023) 88617186 88617166

网址:<http://www.cqup.com.cn>

邮箱:fxk@cqup.com.cn(营销中心)

全国新华书店经销

重庆市正前方彩色印刷有限公司印刷

*

开本:787mm×1092mm 1/16 印张:8 字数:261千

2021年2月第1版 2021年2月第1次印刷

ISBN 978-7-5689-2548-8 定价:29.00元

本书如有印刷、装订等质量问题,本社负责调换
版权所有,请勿擅自翻印和用本书
制作各类出版物及配套用书,违者必究

前 言

我国2019年《政府工作报告》中提出了全面深化职业教育改革,高职大规模扩招100万人的要求,要让更多的年轻人凭借一技之长实现人生价值,这是国家为未来发展培养和储备后备人才的大计。这一利好政策也为我们中职学生提供了更多的深造机会。随着国家经济、科技的发展,越来越多中国企业日趋国际化,诸多公司有许多海外的重大工程,国家和社会对专业人才的需求旺盛。我们中职学生既手握机遇也面临挑战,不仅要有扎实的专业知识,还须具备基本的外语交流能力。为了满足社会对中等专业人才的需求,也为同学们打好基础进入高职学校学习的基础,我们组织编写了本听说系列教程,以“紧扣实用、学以致用”为原则,侧重对学生英语听和说能力的培养,旨在使同学们获得基本的英语交流能力。

本系列教程以紧贴生活、工作的话题为纲,力求将中外文化的学习融入体验式和互动式的听力和口语学习中。听力素材的选择考虑了不同语言能力学生的需求,力求难易兼顾,提升能力。口语训练的场景也以实用为主,希望让同学们有话说、敢说话、说对话。

本系列教程分为基础和提高两个层次,每个层次包括两册教材。完成基础教程的学习后,同学们的听说能力应该有了较大进步。提高教程中的生活话题更加深入生活,工作话题也同实际职场场景联系更加紧密,内容上仍力求难易兼顾,听力和口语训练并重。在提高教程中,每个单元提供了与单元话题相关的词汇,以扩大同学们的词汇量,帮助同学们听懂后面的听力内容,并有助于同学们进行口语输出;每个单元的听力练习按照从易到难思路编排;每个单元提供了语言情境或者开放式话题,供同学们进行口语操练。

本册教材由湖北省旅游学校和武汉市财贸学校的教师团队共同完成,雷静、皮莉丽担任主编,提出本教材的编写思路、写作框架及负责全书的统稿和定稿工作。具体分工如下:雷静编写第4、9、10单元,皮莉丽编写第5、6单元,李雪编写第3、14、15单元,金川编写第1、2、8、11、12单元,赵娟编写第7单元,王睿喆编写第13单元。

因编者水平有限,书中不足之处在所难免,恳请各位老师和同学提出宝贵的意见和建议,以便再版时修订完善。

编 者

2021年1月

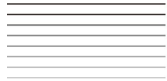
Contents



Unit 1	Housing and Transportation	1
Unit 2	Public Service	6
Unit 3	Social Activities	11
Unit 4	Social Etiquette	16
Unit 5	Technology	21
Unit 6	Entertainment	26
Unit 7	Lifestyle	31
Unit 8	Dating and Parties	36
Unit 9	Making Decisions	41
Unit 10	Discussion	46
Unit 11	Emotion 	52
Unit 12	Emotion 	57
Unit 13	Expressing Opinions	62
Unit 14	Revision 	68
Unit 15	Revision 	73
	Audio Scripts and Keys	78

UNIT
1

Housing and Transportation



Part A Warming-up



1. Listen and match.



a house



a studio apartment



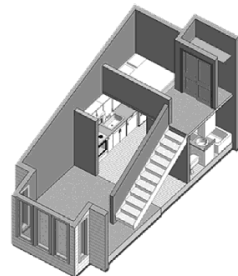
a dormitory

a shared apartment



a loft apartment

a capsule apartment



2. Match the verbs on the left with the words or phrases on the right.

- | | |
|----------|-------------------|
| 1) take | A. a car |
| 2) drive | B. a bike |
| 3) ride | C. home |
| 4) walk | D. money |
| 5) share | E. a bus / subway |
| 6) save | F. a room |

Part B Theme Listening



Listen to the sentences and complete the table.

Name	Where to live	How to go to work
Frank		
Kate		
Naoko		
Li Ming		
Han Fan		
Wang Li		

Part C Further Listening



1. First listening: Listen carefully and match the dialogues with the pictures.



1) _____



2) _____



3) _____



4) _____

2. *Second listening: Listen to the dialogues again. Answer the following questions.*

(Dialogue 1)

1) Why does the man move to a new apartment?
_____2) How far is it from his new apartment to his work place?

(Dialogue 2)

3) How does the man go to work?
_____4) How will he pay for the cost of water and electricity?

(Dialogue 3)

5) How many people will share the apartment?
_____6) What are forbidden in this apartment?

(Dialogue 4)

7) Why is the woman going to move to a new house?
_____8) Why does the man live with his parents?
_____**Part D Oral Practice**1. *Pair work: Ask and answer these questions with your partner.*Where do you live now?
__________
_____How do you go to work / school every day?
__________
_____Will you choose to live with your parents after you get married? Why?





If you need to rent an apartment, what questions do you think you will ask the landlord?



2. **Pronunciation and intonation:** Read the following sentences with a rising tone, a falling tone, a syllable stress, or a liaison. Repeat many times until you can say them fluently.

- 1) Have you signed a lease on your apartment yet?
- 2) We signed a two-year lease. We secured a contract, so he can't raise the rent next year.
- 3) They have rented an apartment, sharing rent and utilities.
- 4) She rents a house very far from her work place, so she has to take the subway to work every day.
- 5) He rides a bike to school. He needs to wear a raincoat on rainy days.
- 6) He rides a motorcycle to work. It's really cool, but not cheaper than driving a car.

Part E Extensive Listening



1. **First listening:** Listen carefully and decide whether the following statements are true (T) or false (F).

- () 1) Most young people couldn't afford an apartment.
- () 2) In order to save money, some people will walk or ride to work.
- () 3) The rent of an apartment in the city center is so high that many young people won't choose them.
- () 4) The key to live a peaceful life in a shared apartment is to find a good roommate.
- () 5) For those who have money or cars, there is nothing to worry about.

2. **Second listening:** Listen to the passage again. Choose the right answers.

- () 1) What has become a cause of worry in China nowadays?
 - A. The increase of population.
 - B. The rising price of property.
 - C. The employment rate of young people.
- () 2) What do young people do when they can't afford the rent?
 - A. They will share it with others.
 - B. They will save money by walking or riding to work.
 - C. They will look for a cheaper apartment.

- () 3) The word “utilities” means _____.
- A. the cost of electricity B. the cost of water C. both A and B
- () 4) Where will people live if they have enough money or private cars?
- A. In a studio apartment. B. In a shared apartment. C. In a house.
- () 5) Why do people who drive to work envy those who walk or ride to work?
- A. Because they may have a car accident.
B. Because they may be caught in a traffic jam.
C. Because it's not easy to park their cars.

Part F Oral Task

Task 1: *Where do you want to live? Why? Try to use the words and expressions in the box below.*

a studio apartment
a shared apartment
live with parents
a loft apartment
dormitory
youth hotel
saving money and energy
convenient in transportation
fully furnished
share the rent and utilities



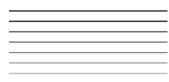
Task 2: *Work in pairs and discuss the topics below.*

Topic 1: How to find an appropriate apartment?

Topic 2: What are favorable characters a roommate should have?

UNIT
2

Public Service



Part A Warming-up



1. Listen and match.



fire station



supermarket



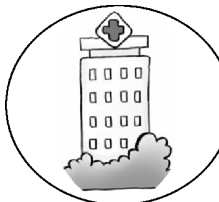
bank



police station



hospital



post office

2. Match the verbs on the left with the words or expressions on the right.

- 1) withdraw / deposit
- 2) report
- 3) go to see
- 4) open
- 5) swipe
- 6) pay
- 7) mail
- 8) register

- A. a doctor
- B. an account
- C. a credit card
- D. some money
- E. a letter
- F. a case
- G. marriage / divorce
- H. a fine

Part B Theme Listening



Listen to the short dialogues and complete the table.

Dialogue	Where does the dialogue most probably take place?
1)	
2)	
3)	
4)	
5)	
6)	

Part C Further Listening



1. First listening: Listen carefully and match the dialogues with the pictures.



1) _____



2) _____



3) _____



4) _____

2. *Second listening: Listen to the dialogues again. Answer the following questions.*

(Dialogue 1)

1) How long has the boy felt like this?

2) What are the boy's symptoms?

(Dialogue 2)

3) What does the man want to do?

4) Which number does he choose in the end?

(Dialogue 3)

5) What does the man want to do?

6) How much does the woman give to the man?

(Dialogue 4)

7) Where does the girl live?

8) What happened to her?

Part D Oral Practice

1. *Pairwork: Ask and answer these questions with your partner.*



Have you ever dialed 110 or 119? What happened?





Have you ever seen a doctor alone?





Do you know where the Poly Theater is?



Have you ever been to the Forbidden City?



2. **Pronunciation and intonation:** Read the following sentences with a rising tone, a falling tone, a syllable stress, or a liaison. Repeat many times until you can say them fluently.

- 1) 119, what is the emergency?
- 2) My neighbor's house is on fire now. Please send someone here quickly! The address is...
- 3) Good morning! Welcome to the Bank of China. How can I help you today?
- 4) I would like to withdraw the money and close my account, please.
- 5) How much does the registration cost?
- 6) OK, sir. In that case, I would like to introduce our new plans which would be convenient for you.

Part E Extensive Listening



1. **First listening:** Listen carefully and decide whether the following statements are true (T) or false (F).

- () 1) City Hall is the place where London's government is.
- () 2) The GLA is responsible for all kinds of public services.
- () 3) The glass exterior symbolizes the fact that GLA's work is done in the open for all to see.
- () 4) All the meetings and debates in the City Hall will be broadcast live online.
- () 5) City Hall opens to the public and press every day.

2. **Second listening:** Listen to the passage again. Choose the right answers.

- () 1) Where is the City Hall?
- A. In the center of London.
- B. Near the Thames and the Tower Bridge.
- C. Near London.
- () 2) How many seats are there set for the public and press in the Chamber?
- A. 120. B. 125. C. 250.
- () 3) The word "GLA" means _____.
- A. Government of London Authority
- B. Government of London Assembly

- C. Greater London Authority
- () 4) Where will many meetings and debates take place?
- A. In the Chamber.
B. In a meeting room.
C. In the great hall.
- () 5) When is City Hall open to the public?
- A. Every day.
B. Every weekend.
C. From 8 a. m. to 8 p. m. , Monday to Friday , and also on occasional weekends.

Part F Oral Task

Task 1: *What do you think of public services in your city? Try to use the words and expressions in the box below.*

convenient / inconvenient
fast and efficient
considerate and thoughtful
slow and backward
dilatory
complex
open and see-through government
modernize
on time / punctual
warm-hearted



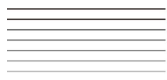
Task 2: *Work in pairs and discuss the topics below.*

Topic 1: What will you do in an emergency case (a fire / robbery / someone got injured in a car accident) ?

Topic 2: Where can you go if you want some public services, such as paying social security / utilities / fines for traffic violations ?

UNIT
3

Social Activities



Part A Warming-up



1. Listen and match.



relief



nursing home



wheelchair



a volunteer teacher



orphanage



donate

2. Match the words or expression on the left with their meanings on the right.

- | | |
|------------------|---|
| 1) volunteer | A. providing personal satisfaction ; producing a lot of money |
| 2) ordinary | B. a person who does a job without being paid for it |
| 3) rewarding | C. to continue to live or exist despite a dangerous event or time |
| 4) survive | D. an event resulting in great loss and misfortune |
| 5) feel proud of | E. feel pleased about something one has done |
| 6) disaster | F. not unusual or special |

Part B Theme Listening



Listen to the sentences and complete the table.

Name	What social activities did he / she do?
Johnny	1)
Amy	2)
Eason	3)
Julie	4)
Henry	5)
Nancy	6)

Part C Further Listening



1. First listening: Listen carefully and match the dialogues with the pictures.



1) _____



2) _____



3) _____



4) _____

2. Second listening: Listen to the dialogues again. Answer the following questions.

(Dialogue 1)

1) Is the man introducing his girlfriend?

2) When did the man get her?

(Dialogue 2)

3) Why does the boy congratulate the girl?

4) How is the girl going to do with the money?

(Dialogue 3)

5) Is the woman sick?

6) How many times has she donated blood?

(Dialogue 4)

7) Is Li Min a volunteer?

8) What is Li Min's task?

Part D Oral Practice

1. *Pair work*: Ask and answer the questions with your partner.



What social activities do you think challenging?





What will you do if you have a chance to do some social services?





Why do you choose the voluntary job as a...?

