

The George
Washington
University
Bulletin

Undergraduate
and Graduate
Programs

1989–1990

THE GEORGE WASHINGTON UNIVERSITY BULLETIN

901886

**UNDERGRADUATE AND GRADUATE PROGRAMS
1989-1990**

Columbian College of Arts and Sciences

Graduate School of Arts and Sciences

School of Education and Human Development

School of Government and Business Administration

Elliott School of International Affairs

Division of Continuing Education

127
P514

华东政法大学图书馆



04025122



For information concerning the School of Engineering and Applied Science, the National Law Center, or the School of Medicine and Health Sciences, please request the appropriate bulletin.

CONTENTS

- 5 The University Calendar
- 9 The University
- 19 Admissions
- 26 Registration
- 27 Fees and Financial Regulations
- 32 Financial Aid
- 40 Prizes
- 45 Regulations
- 52 Associations and Services
- 56 Student Life
- 63 Secondary Fields of Study
- 63 Columbia College of Arts and Sciences
- 82 Graduate School of Arts and Sciences
- 94 School of Education and Human Development
- 120 School of Government and Business Administration
- 156 Elliott School of International Affairs
- 168 Division of Continuing Education
- 174 Summer Sessions
- 174 Research Centers and Institutes
- 176 Courses of Instruction
 - 178 Accountancy
 - 182 Administrative Sciences—Graduate Program
 - 185 American Studies Program
 - 191 Anatomy—Doctoral Program
 - 193 Anthropology
 - 201 Art
 - 214 Art Therapy—Graduate Program
 - 216 Association Management—Graduate Program
 - 217 Biochemistry—Graduate Programs
 - 219 Biological Sciences
 - 226 Business Administration
 - 237 Chemistry
 - 243 Classics
 - 245 Communication
 - 249 Early Modern European Studies
 - 249 East Asian Languages and Literatures
 - 252 East Asian Studies
 - 253 Economics
 - 261 Educational Leadership
 - 268 English
 - 277 English as a Foreign Language
 - 278 Environmental and Resource Policy—Graduate Program
 - 279 Environmental Science—Graduate Program
 - 280 Environmental Studies
 - 281 Forensic Sciences—Graduate Programs
 - 286 Genetics—Graduate Programs
 - 288 Geobiology—Graduate Programs
 - 289 Geography and Regional Science
 - 292 Geology
 - 297 Germanic Languages and Literatures
 - 300 Gerontology—Graduate Program
 - 300 Health Services Administration
 - 304 History
 - 315 Human Kinetics and Leisure Studies
 - 321 Human Services
 - 325 Humanities
 - 325 Individual Graduate Programs

- 326 International Affairs
- 328 Journalism
- 331 Judaic Studies
- 332 Latin American Studies
- 333 Legislative Affairs—Graduate Program
- 334 Liberal Arts
- 335 Management Science
- 343 Mathematics
- 351 Microbiology—Graduate Programs
- 353 Museum Studies—Graduate Program
- 355 Music
- 360 Naval Science
- 363 Pathology—Graduate Programs
- 365 Pharmacology
- 367 Philosophy
- 370 Physics
- 375 Physiology—Graduate Programs
- 376 Political Communication
- 377 Political Science
- 387 Psychology
- 395 Public Administration—Graduate Programs
- 399 Public Policy—Graduate Programs
- 400 Religion
- 404 Romance Languages and Literatures
- 410 Russian and East European Studies—Graduate Program
- 412 Science, Technology, and Public Policy—Graduate Program
- 413 Security Policy Studies—Graduate Program
- 414 Service—Learning Program
- 414 700 Series
- 415 Slavic Languages and Literatures
- 418 Sociology
- 424 Speech and Hearing
- 428 Statistics/Computer and Information Systems
- 435 Teacher Preparation and Special Education
- 447 Telecommunication—Graduate Program
- 448 Theatre and Dance
- 453 University Professors
- 456 Urban and Regional Planning
- 460 Women's Studies—Graduate Programs
- 462 Faculty and Staff of Instruction
- 508 Index

THE GEORGE WASHINGTON UNIVERSITY BULLETIN

901886

**UNDERGRADUATE AND GRADUATE PROGRAMS
1989-1990**

Columbian College of Arts and Sciences

Graduate School of Arts and Sciences

School of Education and Human Development

School of Government and Business Administration

Elliott School of International Affairs

Division of Continuing Education

127
P514

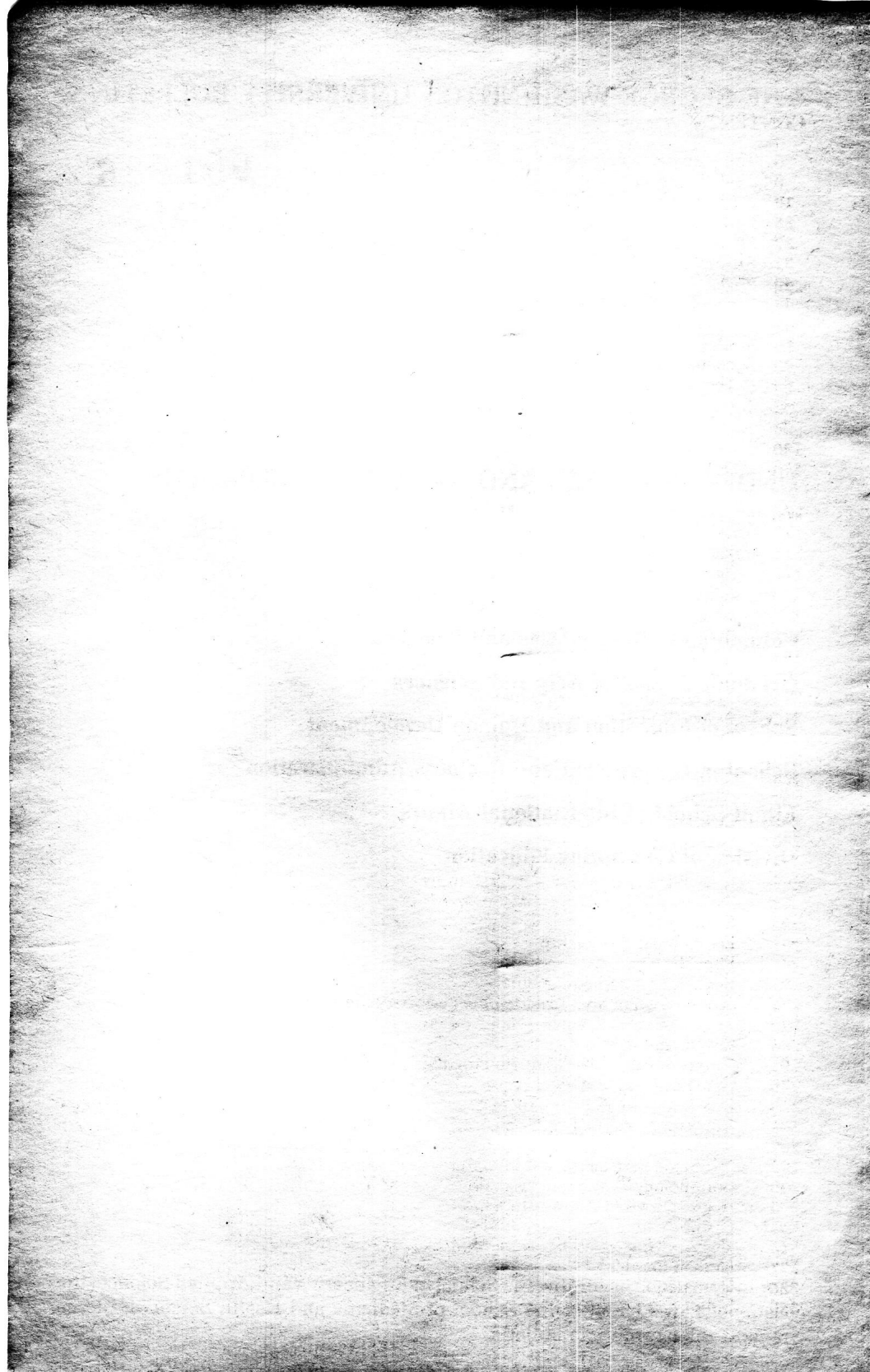
华东政法大学图书馆



04025122



For information concerning the School of Engineering and Applied Science, the National Law Center, or the School of Medicine and Health Sciences, please request the appropriate bulletin.



CONTENTS

- 5 The University Calendar
- 9 The University
- 19 Admissions
- 26 Registration
- 27 Fees and Financial Regulations
- 32 Financial Aid
- 40 Prizes
- 45 Regulations
- 52 Associations and Services
- 56 Student Life
- 63 Secondary Fields of Study
- 63 Columbian College of Arts and Sciences
- 82 Graduate School of Arts and Sciences
- 94 School of Education and Human Development
- 120 School of Government and Business Administration
- 156 Elliott School of International Affairs
- 168 Division of Continuing Education
- 174 Summer Sessions
- 174 Research Centers and Institutes
- 176 Courses of Instruction
- 178 Accountancy
- 182 Administrative Sciences—Graduate Program
- 185 American Studies Program
- 191 Anatomy—Doctoral Program
- 193 Anthropology
- 201 Art
- 214 Art Therapy—Graduate Program
- 216 Association Management—Graduate Program
- 217 Biochemistry—Graduate Programs
- 219 Biological Sciences
- 226 Business Administration
- 237 Chemistry
- 243 Classics
- 245 Communication
- 249 Early Modern European Studies
- 249 East Asian Languages and Literatures
- 252 East Asian Studies
- 253 Economics
- 261 Educational Leadership
- 268 English
- 277 English as a Foreign Language
- 278 Environmental and Resource Policy—Graduate Program
- 279 Environmental Science—Graduate Program
- 280 Environmental Studies
- 281 Forensic Sciences—Graduate Programs
- 286 Genetics—Graduate Programs
- 288 Geobiology—Graduate Programs
- 289 Geography and Regional Science
- 292 Geology
- 297 Germanic Languages and Literatures
- 300 Gerontology—Graduate Program
- 300 Health Services Administration
- 304 History
- 315 Human Kinetics and Leisure Studies
- 321 Human Services
- 325 Humanities
- 325 Individual Graduate Programs

- 326 International Affairs
- 328 Journalism
- 331 Judaic Studies
- 332 Latin American Studies
- 333 Legislative Affairs—Graduate Program
- 334 Liberal Arts
- 335 Management Science
- 343 Mathematics
- 351 Microbiology—Graduate Programs
- 353 Museum Studies—Graduate Program
- 355 Music
- 360 Naval Science
- 363 Pathology—Graduate Programs
- 365 Pharmacology
- 367 Philosophy
- 370 Physics
- 375 Physiology—Graduate Programs
- 376 Political Communication
- 377 Political Science
- 387 Psychology
- 395 Public Administration—Graduate Programs
- 399 Public Policy—Graduate Programs
- 400 Religion
- 404 Romance Languages and Literatures
- 410 Russian and East European Studies—Graduate Program
- 412 Science, Technology, and Public Policy—Graduate Program
- 413 Security Policy Studies—Graduate Program
- 414 Service-Learning Program
- 414 700 Series
- 415 Slavic Languages and Literatures
- 418 Sociology
- 424 Speech and Hearing
- 428 Statistics/Computer and Information Systems
- 435 Teacher Preparation and Special Education
- 447 Telecommunication—Graduate Program
- 448 Theatre and Dance
- 453 University Professors
- 456 Urban and Regional Planning
- 460 Women's Studies—Graduate Programs
- 462 Faculty and Staff of Instruction
- 508 Index

THE CALENDAR 1989-1990*

AUGUST 1989	DECEMBER 1989	APRIL 1990
S M T W T F S 1 2 3 4 5 6 7 8 9 10 11 12 13 14 15 16 17 18 19 20 21 22 23 24 25 26 27 28 29 30 31	S M T W T F S 1 2 3 4 5 6 7 8 9 10 11 12 13 14 15 16 17 18 19 20 21 22 23 24 25 26 27 28 29 30 31	S M T W T F S 1 2 3 4 5 6 7 8 9 10 11 12 13 14 15 16 17 18 19 20 21 22 23 24 25 26 27 28 29 30
SEPTEMBER 1989	JANUARY 1990	MAY 1990
S M T W T F S 1 2 3 4 5 6 7 8 9 10 11 12 13 14 15 16 17 18 19 20 21 22 23 24 25 26 27 28 29 30	S M T W T F S 1 2 3 4 5 6 7 8 9 10 11 12 13 14 15 16 17 18 19 20 21 22 23 24 25 26 27 28 29 30 31	S M T W T F S 1 2 3 4 5 6 7 8 9 10 11 12 13 14 15 16 17 18 19 20 21 22 23 24 25 26 27 28 29 30 31
OCTOBER 1989	FEBRUARY 1990	JUNE 1990
S M T W T F S 1 2 3 4 5 6 7 8 9 10 11 12 13 14 15 16 17 18 19 20 21 22 23 24 25 26 27 28 29 30 31	S M T W T F S 1 2 3 4 5 6 7 8 9 10 11 12 13 14 15 16 17 18 19 20 21 22 23 24 25 26 27 28	S M T W T F S 1 2 3 4 5 6 7 8 9 10 11 12 13 14 15 16 17 18 19 20 21 22 23 24 25 26 27 28 29 30
NOVEMBER 1989	MARCH 1990	JULY 1990
S M T W T F S 1 2 3 4 5 6 7 8 9 10 11 12 13 14 15 16 17 18 19 20 21 22 23 24 25 26 27 28 29 30	S M T W T F S 1 2 3 4 5 6 7 8 9 10 11 12 13 14 15 16 17 18 19 20 21 22 23 24 25 26 27 28 29 30 31	S M T W T F S 1 2 3 4 5 6 7 8 9 10 11 12 13 14 15 16 17 18 19 20 21 22 23 24 25 26 27 28 29 30 31

1989 FALL SEMESTER

August 22-23	Orientation for students from foreign countries
August 24-25	Orientation and placement tests for new students
† August 28-30	Registration
August 31	Classes begin
September 4	Labor Day (holiday)
September 6	University Faculty Assembly meeting
September 8	Fall Convocation
September 15	Faculty Senate meeting
October 1	Applications due for February graduation Applications due for November Master's Comprehensive Examinations in the Elliott School of International Affairs and the School of Government and Business Administration
October 13	Faculty Senate meeting
October 19	Board of Trustees meeting
November 1	Applications due for spring semester financial aid
November 3	Applications due for Ed.D., Ed.S., and M.A. in Ed.&H.D. Comprehensive Examinations
November 3-4	Elliott School of International Affairs and School of Government and Business Administration Master's Comprehensive Examinations
November 10	Faculty Senate meeting

* The Academic Calendar is subject to change.

† The registration procedure and the hours of registration are stated in the Schedule of Classes, which is available in advance of each semester.

- November 23-24 Thanksgiving holiday
 November 27 Doctoral dissertations due from February candidates in the Graduate School of Arts and Sciences, the School of Education and Human Development, and the School of Government and Business Administration
 December 2 Ed.D., Ed.S., and M.A. in Ed.&H.D. Comprehensive Examinations
 December 7 Last day of fall semester classes
 December 8 Faculty Senate meeting
 December 11-19 Examination period

1990 SPRING SEMESTER

- January 3 All degree requirements to be completed and reported to the Graduate School of Arts and Sciences for February graduation
 January 4-5 Orientation for new students and students from foreign countries
 Master's theses due from February candidates
 *January 8-10 Registration
 January 11 Spring semester classes begin
 January 15 Martin Luther King Day (holiday)
 January 18 Board of Trustees meeting
 January 19 Faculty Senate meeting
 January 23 University Faculty Assembly meeting
 February 1 Applications due for May graduation
 February 9 Faculty Senate meeting
 February 18 Winter Convocation
 February 19 George Washington's birthday observed (holiday)
 February 28 Applications due for April Master's Comprehensive Examinations in the Elliott School of International Affairs and the School of Government and Business Administration
 March 1 Deadline for submission of 1990-91 undergraduate financial aid applications
 March 2 Doctoral dissertations due from May candidates in the Graduate School of Arts and Sciences and the School of Education and Human Development
 March 9 Faculty Senate meeting
 March 12-16 Spring recess
 March 15 Board of Trustees meeting
 March 16 Applications due for Ed.D., Ed.S., and M.A. in Ed.&H.D. Comprehensive Examinations
 March 19 Doctoral dissertations due from May candidates in the School of Government and Business Administration
 April 1 Deadline for submission of summer sessions and 1990-91 graduate financial aid applications
 April 13 Faculty Senate meeting
 April 13-14 School of Government and Business Administration and Elliott School of International Affairs Master's Comprehensive Examinations

* The registration procedure and the hours of registration are stated in the *Schedule of Classes*, which is available in advance of each semester.

- April 14 Ed.D., Ed.S., and M.A. in Ed.&H.D. Comprehensive Examinations
- April 15 Honors Convocation
- April 16 Master's theses due from all May candidates except those in the Elliott School of International Affairs
- April 19 All degree requirements to be completed and reported to the Graduate School of Arts and Sciences for May graduation
- April 27 Last day of spring semester classes
Master's theses due from May candidates in the Elliott School of International Affairs
- May 1-10 Examination period
- May 4 Faculty Senate meeting
- May 13 Commencement
- May 17 Board of Trustees meeting

FACTS ABOUT GEORGE WASHINGTON UNIVERSITY

<i>General Information</i>	Private, nonsectarian, coeducational, founded 1821
<i>Location</i>	Washington, D.C., bounded by Pennsylvania Avenue and 19th, F, and 24th Streets, N.W.
<i>Number of On-Campus Students</i>	10,048 full-time; 6,912 part-time
<i>Geographical Origin of Students</i>	50 states, the District of Columbia, and more than 100 countries
<i>1989-90 Tuition</i>	Full-time entering undergraduates (per semester), \$5,750; full-time returning undergraduates (per semester), \$5,265; all part-time and graduate students (per credit hour), \$403 (see pages 27-31)
<i>Number of Full-time Faculty</i>	1,218 (91% with doctoral degrees)
<i>Number of Part-time Faculty</i>	557 (includes some of the most distinguished men and women in Washington)
<i>Room and Board</i>	Cost varies from approximately \$5,360 to \$6,280 for the academic year (see page 57)

Undergraduate majors: Accountancy, American Civilization, American Literature, Anthropology, Applied Mathematics, Art History, Biology, Botany, Business Administration, Chemistry, Chinese Language and Literature, Civil Engineering, Classical Archaeology and Anthropology, Classical Archaeology and Classics, Classical Humanities, Computer and Information Systems, Computer Science, Criminal Justice, Dance, Early Modern European Studies, East Asian Studies (China or Japan), Economics, Electrical Engineering, Elementary Education, Emergency Medical Services, English Literature, Environmental Studies, Exercise and Sport Science, Fine Arts, French Language and Literature, Geography, Geology, Germanic Languages and Literatures, History, Human Services, International Affairs, Journalism, Judaic Studies, Latin American Studies, Liberal Arts, Literature in English, Mathematics, Mechanical Engineering, Medical Record Administration, Medical Technology, Music, Nursing Anesthesia, Philosophy, Physician Assistant, Physics, Political Communication, Political Science, Psychology, Radio-Television, Radiologic Sciences and Administration, Religion, Russian Language and Literature, Russian Literature and Culture—in Translation, Sociology, Spanish-American Literature, Spanish Language and Literature, Special Education, Speech Communication, Speech and Hearing Science, Statistics, Systems Analysis and Engineering, Theatre, Zoology

Study leading to graduate or professional degrees is offered in the Graduate School of Arts and Sciences, the National Law Center, the School of Medicine and Health Sciences, the School of Engineering and Applied Science, the School of Education and Human Development, the School of Government and Business Administration, and the Elliott School of International Affairs.

THE UNIVERSITY

HISTORY

The George Washington University had its beginning in 1821 as The Columbian College in the District of Columbia. The name of the institution was changed in 1873 to Columbian University and in 1904 to The George Washington University. The debt of the University to George Washington, whose name it bears, is an intangible one.

George Washington, as President and as private citizen, had urgently insisted upon the establishment of a national university in the federal city. There he hoped that, while being instructed in the arts and sciences, students from all parts of the country would acquire the habits of good citizenship, throwing off local prejudices and gaining at first hand a knowledge of the practice, as well as the theory, of republican government. To further the materialization of his hopes, Washington left a bequest of fifty shares of The Potomac Company "towards the endowment of a University to be established within the limits of the District of Columbia, under the auspices of the General Government, if that government should incline to extend a fostering hand towards it." The Congress never extended a "fostering hand." The Potomac Company passed out of existence, and Washington's bequest became worthless.

Fully conscious of Washington's hopes, but motivated primarily by a great missionary urge and the need for a learned clergy, a group of dedicated ministers and laymen sponsored a movement for the establishment of a college in the District of Columbia. Inspired largely by the zeal and energy of the Reverend Luther Rice, they raised funds for the purchase of a site and petitioned Congress for a charter. After much delay and amendment, Congress granted a charter, which was approved by President Monroe on February 9, 1821. To safeguard the College's nonsectarian character it provided "That persons of every religious denomination shall be capable of being elected Trustees; nor shall any person, either as President, Professor, Tutor or pupil, be refused admittance into said College, or denied any of the privileges, immunities, or advantages thereof, for or on account of his sentiments in matters of religion."

During the entire time when the institution was known as Columbian College, its activities were centered on College Hill, a tract of forty-six and a half acres between the present Fourteenth and Fifteenth Streets extending north from Florida Avenue to somewhat beyond Columbia Road. The Medical School was located downtown. For the better part of the Columbian University period, the buildings of the University were situated along H Street between Thirteenth and Fifteenth Streets.

During the last half-century, the University's present plant has been developed in that section of the old First Ward familiarly known as "Foggy Bottom," between Nineteenth and Twenty-fourth Streets, south of Pennsylvania Avenue. The area has many reminders of historic interest to the University. President Monroe, who signed the Charter, lived at 2017 Eye Street. The first President of the Board of Trustees, the Reverend Obadiah B. Brown, was for fifty years the pastor of a church at Nineteenth and Eye Streets, and Washington selected Twenty-third and E Streets as the site of the National University he hoped to see established.

PURPOSE AND OBJECTIVES

The purpose of The George Washington University was to realize "the aspirations of Washington, Jefferson and Madison, for the erection of a university at the seat of the Federal Government." Over the years it has been the aim to develop the University ideal in the nation's capital with a view toward meeting the changing needs of society while continuing to pursue the traditional principles of learning and research.

The George Washington University now rededicates itself and all the resources at its command to the pursuit of knowledge and its dissemination.

To this end:

The University recognizes its special opportunities in and obligations to one of the principal capitals of the world. It is a primary objective of the University to utilize its historical, geographical, and functional relationship to the nation's capital and the Washington community in continuing the development of a great nationally and internationally oriented university.

The University recognizes the needs of our times and accepts the challenge to develop each student's potential abilities to the fullest extent.

The University is and should remain privately controlled, nonsectarian, and coeducational.

Admission to the University is determined only in terms of the personal character and academic qualifications of the candidates.

A broadly based liberal education is fundamental to the total program of the University.

Expansion of graduate and professional studies and research and the utilization for this purpose of the excellent research facilities and materials available in the nation's capital are basic to the continuous development of the University's educational program.

The provision of superior instruction and facilities and the application of high standards of entrance qualifications and academic achievement to all students whether full-time or part-time, on-campus or off-campus, are major missions of the University.

A balanced program of student extracurricular activities is an integral part of the University program.

The University will continue to strive to meet the evident needs of an enlarged student body while governing the size of enrollment by its capacity to supply adequate staff and facilities for the excellent teaching and research that it espouses.

THE COLLEGES, SCHOOLS, AND DIVISIONS

George Washington University includes nine colleges, schools, and divisions, as follows:

*Columbian College of Arts and Sciences** offers four-year programs in the arts and sciences leading to the degrees of Bachelor of Arts, Bachelor of Science, and Bachelor of Music. The College also provides prelegal and premedical programs.

The Graduate School of Arts and Sciences† offers advanced study and research leading to the degrees of Master of Arts, Master of Fine Arts, Master of

* Columbian College of Arts and Sciences cooperates with the School of Medicine and Health Sciences in offering a program leading to the combined degrees of Bachelor of Arts and Doctor of Medicine.

† The Graduate School of Arts and Sciences cooperates with the School of Medicine and Health Sciences in offering programs leading to the joint degrees of Master of Science-Doctor of Medicine and Doctor of Medicine-Doctor of Philosophy.

Forensic Sciences, Master of Music, Master of Science, Master of Science in Forensic Science, and Doctor of Philosophy. Some degree programs are available off campus and administered by the Division of Continuing Education.

The *School of Medicine and Health Sciences* offers work leading to the degrees of Associate in Science, Bachelor of Science, Bachelor of Science in Health Science, Master of Public Health, and Doctor of Medicine.

The *National Law Center** offers courses leading to the degrees of Juris Doctor, Master of Laws, Master of Comparative Law, Master of Comparative Law (American Practice), and Doctor of Juridical Science and special programs in continuing legal education.

The *School of Engineering and Applied Science* offers courses leading to the degree of Bachelor of Science in the following areas: civil engineering, computer science, electrical engineering, mechanical engineering, and systems analysis and engineering. Graduate programs lead to the degrees of Master of Science, Master of Engineering Administration, Engineer, Applied Scientist, and Doctor of Science. The School has academic jurisdiction over the off-campus programs leading to the degrees of Master of Science, Master of Engineering Administration, and Doctor of Science. These off-campus programs are administered by the Division of Continuing Education.

The *School of Education and Human Development* offers undergraduate programs leading to the degrees of Bachelor of Arts in Education and Human Development and Bachelor of Science in Human Kinetics and Leisure Studies and graduate studies leading to the degrees of Master of Arts in Education and Human Development, Master of Arts in Teaching, Master of Education, Education Specialist, and Doctor of Education. The degree of Master of Arts in Education and Human Development is also available through off-campus programs administered by the Division of Continuing Education.

The *School of Government and Business Administration* offers undergraduate programs leading to the degrees of Bachelor of Accountancy and Bachelor of Business Administration and graduate programs leading to the degrees of Master of Accountancy, Master of Association Management, Master of Business Administration, Master of Health Services Administration, Master of Public Administration, Master of Science in Information Systems Technology, Master of Taxation, Master of Urban and Regional Planning, Specialist in Health Services Administration, and Doctor of Philosophy.

The *Elliott School of International Affairs* offers undergraduate programs leading to the degree of Bachelor of Arts and graduate programs leading to the degree of Master of Arts.

The *Division of Continuing Education* assists in providing continuing education programs for adult students by administering or coordinating the off-campus credit offerings of the colleges and schools of the University, at both the undergraduate and graduate levels. Noncredit courses are also offered through the Division.

ACADEMIC STATUS

George Washington University is accredited by its regional accrediting agency, the Middle States Association of Colleges and Schools.

The University is on the approved list of the American Association of University Women and is a member of the College Board.

* The National Law Center cooperates with the Elliott School of International Affairs, the Graduate School of Arts and Sciences, and the School of Government and Business Administration in offering programs leading to joint Juris Doctor and master's degrees.

The National Law Center is a charter member of the Association of American Law Schools and is approved by the Section of Legal Education and Admissions to the Bar of the American Bar Association. The School of Medicine and Health Sciences has had continuous approval by its accrediting body, which is currently the Liaison Committee on Medical Education, sponsored jointly by the American Medical Association and the Association of American Medical Colleges. All undergraduate engineering curricula, including the computer engineering option, of the School of Engineering and Applied Science are accredited by the Engineering Accreditation Commission of the Accreditation Board for Engineering and Technology. The computer science curriculum is accredited by the Computer Science Accreditation Commission of the Computing Sciences Accreditation Board. The School of Education and Human Development is a charter member of the American Association of Colleges for Teacher Education and is accredited by the National Council for Accreditation of Teacher Education for its eligible bachelor's, master's, and doctoral degree programs; the School's counseling programs are accredited by the Council for the Accreditation of Counseling and Related Educational Programs and the Council on Rehabilitation Education. The School of Government and Business Administration has maintained full membership in the Middle Atlantic Association of Colleges of Business Administration since 1961. It joined the Council on Graduate Education for Public Administration in 1966. In 1968, the School became a member of the American Assembly of Collegiate Schools of Business; the Assembly accredited its undergraduate program in 1977 and its master's program in 1982. The programs in accountancy satisfy the educational requirements for the Certified Public Accountant and the Certified Management Accountant professional examinations. The program in health services administration is accredited by the Accrediting Commission on Education for Health Services Administration. The Master of Public Administration program is on the approved list of the National Association of Schools of Public Affairs and Administration. The Master of Urban and Regional Planning degree program is recognized by the American Planning Association. The Master of Association Management degree program is recognized by the American Society of Association Executives. The Department of Chemistry is on the approved list of the American Chemical Society. The Department of Music is an accredited member of the National Association of Schools of Music. The graduate program in clinical psychology in the Department of Psychology is on the approved list of the American Psychological Association. The graduate program in speech-language pathology and audiology is accredited by the Education and Training Board of the Boards of Examiners in Speech-Language Pathology and Audiology.

UNIVERSITY POLICY ON EQUAL OPPORTUNITY

George Washington University does not discriminate against any person on the basis of race, color, religion, sex, national origin, age, handicap, or veteran status. This policy covers all programs, services, policies, and procedures of the University, including admission to education programs and employment. The University is subject to the District of Columbia Human Rights Law.

Inquiries concerning the application of this policy and federal laws and regulations concerning discrimination in education or employment programs and activities may be addressed to Susan B. Kaplan, Special Assistant to the President, George Washington University, Washington, D.C. 20052, (202) 994-6500, or to the Assistant Secretary for Civil Rights of the U.S. Department of Education.

LOCATION

The University is in downtown Washington, between Pennsylvania Avenue and 19th, F, and 24th Streets, N.W. In immediately adjacent areas are the White House, the World Bank, the Corcoran Gallery of Art, the Department of State, the National Academy of Sciences, the John F. Kennedy Center for the Performing Arts, and many other governmental and cultural institutions.

THE UNIVERSITY LIBRARIES

The library collections of the University are housed in the Melvin Gelman Library (the general library of the University) and in the libraries of the National Law Center and the School of Medicine and Health Sciences.

These collections contain approximately 1,500,000 volumes. Endowments supplementing the University appropriation provide research materials in the fields of American civilization, American literature, art history, foreign service, history, labor relations, public finance, the social sciences, and transportation. Gifts from many sources have enriched the collections, including a large National Endowment for the Humanities grant to strengthen the University's humanities holdings. The libraries hold about 17,000 serials.

Information concerning the use of the libraries may be obtained at library service desks. Individual and class instruction in the use of the library and orientation to library facilities are given by librarians upon request.

The library strives to fulfill the curricular, research, and recreational needs and interests of the students. Through computerized searches of bibliographic databases, the reference staff identifies and locates desired research materials not easily found through more traditional methods. The staff assists all members of the University in using the rich resources of the Washington area and the unusual opportunities they offer for extensive research.

Graduate degree candidates at George Washington University may, upon application, be issued a Consortium library card that permits direct borrowing from the main campus libraries of most other academic institutions in the Washington area. Graduate students may also obtain books and journal articles on inter-library loan from other libraries in the city, throughout the United States, and in various other countries.

THE BOARD OF TRUSTEES OF THE UNIVERSITY

The University is privately endowed and is governed by a Board of Trustees of which the President of the University is an *ex officio* member.

Oliver T. Carr, Jr., *Chairman*
 L. Stanley Crane, B.S., *Vice Chairman*
 Thaddeus A. Lindner, B.A. in Govt., *Secretary*
 Nancy B. Dudley, B.A. in Govt., *Assistant Secretary*

Robert McC. Adams, Ph.B., A.M., Ph.D.
 Harold F. Baker, J.D.
 Everett H. Bellows, M.A.
 Vincent C. Burke, Jr., B.S., LL.B.
 *Barbara W. Callahan, B.A., M.B.A.
 Mortimer M. Caplin, B.S., LL.B., J.S.D., LL.D.

* Alumni trustee.