

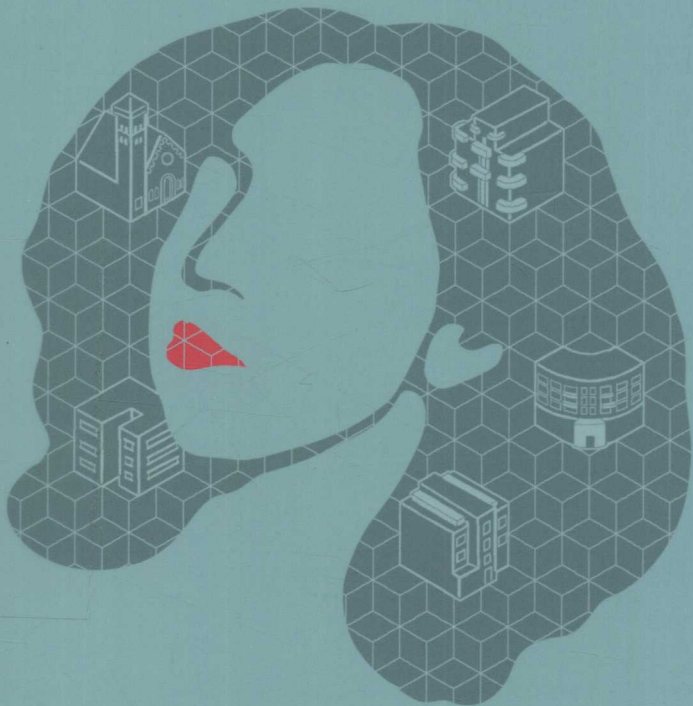
# Eileen Chang's Shanghai

## 上海张爱玲文学地图

淳子 王桢栋 冯宏 营光学社 著

Chun Zi Wang Zhendong Feng Hong

Highlight Studio



同济大学出版社  
TONGJI UNIVERSITY PRESS

# 上海张爱玲文学地图

## Eileen Chang's Shanghai

淳子 王桢栋 冯宏 营光学社 著

Chun Zi Wang Zhendong Feng Hong

Highlight Studio

同济大学出版社

TONGJI UNIVERSITY PRESS

上海 Shanghai

图书在版编目(CIP)数据

上海张爱玲文学地图:汉英对照/淳子等著;须勤  
译.--上海:同济大学出版社,2019.5  
(城市行走书系/江岱,姜庆共主编)  
ISBN 978-7-5608-7573-6

I. ①上… II. ①淳… ②须… III. ①文化史—上海  
—汉、英 IV. ①K295.1

中国版本图书馆CIP数据核字(2019)第055784号

## 上海张爱玲文学地图

淳子 王桢栋 冯宏 营光学社 著  
须勤 译

出品人:华春荣  
策划:江岱  
责任编辑:朱笑黎  
责任校对:徐春莲  
书籍设计:孙晓悦

出版发行:同济大学出版社 [www.tongjipress.com.cn](http://www.tongjipress.com.cn)

(地址:上海市四平路1239号 邮编:200092 电话:021-65985622)

经销:全国各地新华书店

印刷:上海雅昌艺术印刷有限公司

开本:787mm×1092mm 1/36

印张:6

字数:180 000

版次:2019年5月第1版

书号:ISBN 978-7-5608-7573-6

定价:62.00元

本书若有印装质量问题,

请联系出版社,有侵权必究

# 目录

序言 .....	8	逸园跑狗场 .....	130
她的城, 上海 .....	13	伟达饭店 .....	133
张爱玲的上海地图 .....	20	国泰大戏院 .....	136
圣玛利亚女校 .....	23	华懋公寓 .....	139
A 区介绍 .....	43	兰心大戏院 .....	142
兆丰公园 .....	44	康乐邨 .....	146
圣约翰大学 .....	48	张家花园 .....	149
开纳公寓 .....	53	重华公寓 .....	153
B 区介绍 .....	67	D 区介绍 .....	170
明月邨 .....	68	李鸿章旧宅 .....	172
张志沂寄寓 .....	71	大光明戏院 .....	176
美丽园 .....	75	国际饭店 .....	180
旅沪德人乡村俱乐部 .....	79	华安大厦 .....	184
诺曼底公寓 .....	82	卡尔登大戏院 .....	187
爱丁顿公寓 .....	87	卡尔登公寓 .....	191
C 区介绍 .....	106	上海, 我们的城 .....	204
百乐门大饭店舞厅 .....	108	张爱玲人物关系索引图 .....	208
静安寺电车栈 .....	112	张爱玲速写录 .....	210
哈同花园 .....	116		
平安大戏院 .....	120		
圣母大堂 .....	123		
白尔登公寓 .....	126		

# Contents

Foreword .....	10	Weida Hotel .....	133
Her City — Shanghai .....	16	Cathay Theatre .....	136
A Map of Eileen Chang's Shanghai ...	20	Cathay Mansion .....	139
The St. Mary's Hall Girls School ...	23	Lyceum Theatre .....	142
Zone A .....	43	Kangle Cun .....	146
Zhaofeng Park .....	44	Chang Su-ho Garden .....	149
St. John's University .....	48	<b>Chonghua Apartments</b> .....	153
Kinnear Apartments .....	53	Zone D .....	171
Zone B .....	67	Li Hongzhang Residence .....	172
Mingyue Cun .....	68	Grand Theatre .....	176
Zhang Zhiyi Guest Residence ...	71	Park Hotel .....	180
May Lee Court .....	75	Wah An Building .....	184
The German Country Club .....	79	Carlton Theatre .....	187
I.S.S. Normandie Apartments ...	82	<b>Carlton Apartments</b> .....	191
Eddington House .....	87	<b>Shanghai, Our City</b> .....	206
Zone C .....	107	<b>A Diagram of Eileen Chang's</b> <b>Families and Social Relations</b> ...	208
Paramount Ballroom .....	108	<b>A Sketch of Eileen Chang</b> .....	213
Jing'an Temple			
Electric Tram Terminal .....	112		
Hardoon Garden .....	116		
Uptown Theater .....	120		
Russian Orthodox			
Mission Church .....	123		
Belden Apartments .....	126		
Canidrome .....	130		



## 城市行走书系

策划：江岱、姜庆共

### 上海张爱玲文学地图

中文文字：淳子 王桢栋 冯宏 营光学社  
(陈有菲 潘思雨 张音音)

英文文字：须勤

英文校对：Bivash Mukherjee

摄影：王桢栋

绘图：营光学社(夏亦然 刘典傲 孙少白)

责任编辑：朱笑黎

特约编辑：周希冉

书籍设计：孙晓悦

### 鸣谢：

郑时龄，陈子善，黄昱功，薛理勇，周竞，  
孔明珠，王凯，秦蕾，席子，郑民，乐义勇，  
陈宇华，Deborah，董菲亚，华霞虹，姚栋，  
董屹，杨鹏宇，龙嘉雨

上海图书馆

上海市档案馆

## CityWalk Series

Curator: Jiang Dai, Jiang Qinggong

### Eileen Chang's Shanghai

Chinese Text: Chun Zi, Wang Zhendong,  
Feng Hong, Highlight Studio  
(Chen Youfei, Pan Siyu, Zhang Yinyin)

English Text: Xu Qin

English Text Proofreading: Bivash Mukherjee

Photograph: Wang Zhendong

Illustration: Highlight Studio (Xia Yiran,  
Liu Dian'ao, Sun Shaobai)

Editor: Zhu Xiaoli

Contributing Editor: Zhou Xiran

Book Designer: Sun Xiaoyue

### Acknowledgements:

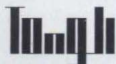
Zheng Shiling, Chen Zishan, Huang Xiangong,  
Xue Yiyong, Zhou Jing, Kong Mingzhu,  
Wang Kai, Qin Lei, Xi Zi, Zheng Min,  
Le Yiyong, Chen Yuhua, Deborah,  
Dong Feiya, Hua Xiahong, Yao Dong,  
Dong Yi, Yang Pengyu, Long Jiayu

Shanghai Library

Shanghai Municipal Archives

本书中的部分研究获国家社会科学基金资助(项目号:16BGL186)

Studies contributing to this book are supported by National Social Science Fund of China  
(Project No: 16BGL186)



同济大学出版社  
TONGJI UNIVERSITY PRESS

# 上海张爱玲文学地图

## Eileen Chang's Shanghai

淳子 王桢栋 冯宏 营光学社 著

Chun Zi Wang Zhendong Feng Hong

Highlight Studio

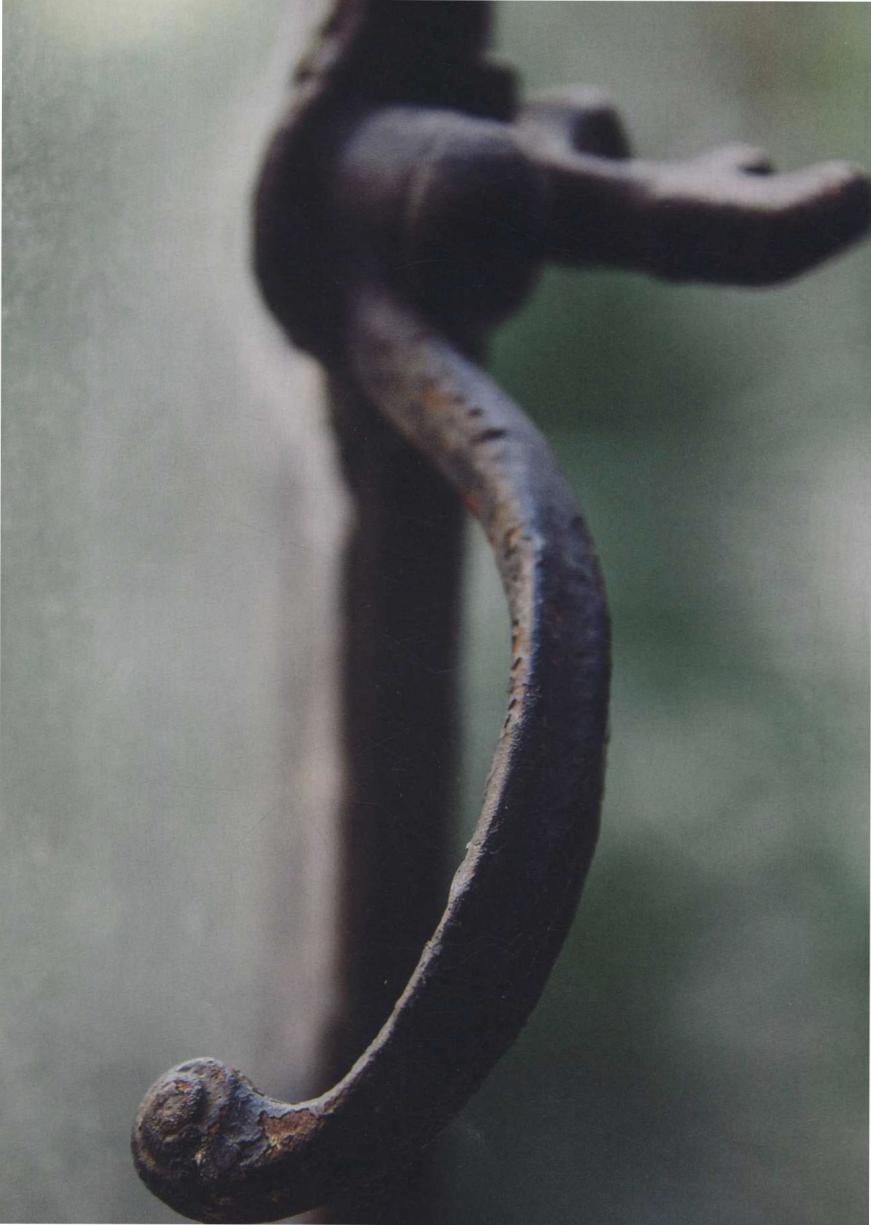
同济大学出版社  
TONGJI UNIVERSITY PRESS

上海 Shanghai



# 目录

序言 .....	8	逸园跑狗场 .....	130
她的城, 上海 .....	13	伟达饭店 .....	133
张爱玲的上海地图 .....	20	国泰大戏院 .....	136
圣玛利亚女校 .....	23	华懋公寓 .....	139
A 区介绍 .....	43	兰心大戏院 .....	142
兆丰公园 .....	44	康乐邨 .....	146
圣约翰大学 .....	48	张家花园 .....	149
开纳公寓 .....	53	重华公寓 .....	153
B 区介绍 .....	67	D 区介绍 .....	170
明月邨 .....	68	李鸿章旧宅 .....	172
张志沂寄寓 .....	71	大光明戏院 .....	176
美丽园 .....	75	国际饭店 .....	180
旅沪德人乡村俱乐部 .....	79	华安大厦 .....	184
诺曼底公寓 .....	82	卡尔登大戏院 .....	187
爱丁顿公寓 .....	87	卡尔登公寓 .....	191
C 区介绍 .....	106	上海, 我们的城 .....	204
百乐门大饭店舞厅 .....	108	张爱玲人物关系索引图 .....	208
静安寺电车栈 .....	112	张爱玲速写录 .....	210
哈同花园 .....	116		
平安大戏院 .....	120		
圣母大堂 .....	123		
白尔登公寓 .....	126		



# Contents

Foreword .....	10	Weida Hotel .....	133
Her City — Shanghai .....	16	Cathay Theatre .....	136
A Map of Eileen Chang's Shanghai ...	20	Cathay Mansion .....	139
The St. Mary's Hall Girls School ....	23	Lyceum Theatre .....	142
Zone A .....	43	Kangle Cun .....	146
Zhaofeng Park .....	44	Chang Su-ho Garden .....	149
St. John's University .....	48	<b>Chonghua Apartments</b> .....	153
Kinnear Apartments .....	53	Zone D .....	171
Zone B .....	67	Li Hongzhang Residence .....	172
Mingyue Cun .....	68	Grand Theatre .....	176
Zhang Zhiyi Guest Residence .....	71	Park Hotel .....	180
May Lee Court .....	75	Wah An Building .....	184
The German Country Club .....	79	Carlton Theatre .....	187
I.S.S. Normandie Apartments ...	82	<b>Carlton Apartments</b> .....	191
Eddington House .....	87	<b>Shanghai, Our City</b> .....	206
Zone C .....	107	<b>A Diagram of Eileen Chang's</b> <b>Families and Social Relations</b> ...	208
Paramount Ballroom .....	108	<b>A Sketch of Eileen Chang</b> .....	213
Jing'an Temple			
Electric Tram Terminal .....	112		
Hardoon Garden .....	116		
Uptown Theater .....	120		
Russian Orthodox			
Mission Church .....	123		
Belden Apartments .....	126		
Canidrome .....	130		

## 序言

如果要历数近代上海的文化名人，张爱玲必定名列前茅。她的足迹遍布上海曾经的公共租界和法租界区域，她的文学和生活空间与近代建筑结下了不解之缘。张爱玲的文学地图让我们重拾当年的历史和记忆，带领我们穿梭在她留下足迹的建筑中，重新拼贴起上海这座城市的沧桑，瞥见书中主角的人世浮沉。《上海张爱玲文学地图》(以下简称《文学地图》)带我们寻找张爱玲，以优美的文笔为我们展示了近百年的上海图景。

张爱玲的才情与这座城市的精神十分契合，上海培育了张爱玲，没有张爱玲的上海，也许同样是难以想象的，所以这本书题为“她的城”。上海处处留下了张爱玲的回忆，她出生在一幢位于苏州河畔的房子。那是加拿大新古典主义建筑师爱尔德(Albert Edmund Algar, 1873—1926)为李鸿章设计的，建造的年代大约在1888—1901年间，在一本1908年出版的关于上海的英文书中，有这幢房子的照片，标明是已故李鸿章的宅邸。这幢房子同张爱玲一样历经沧桑，后人只能凭丰富的想象力去编织当年的图景。今天作为社区文化中心，房子经过多次改造，南面的入口门廊被拆除，南面花园中盖起了楼房和一座连廊。

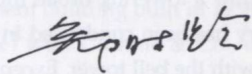
张爱玲在圣玛利亚女校度过了六年的中学生活，如今这里是长宁来福士广场。昔日的贵族女校校园变成了高耸的城市综合体，学校的建筑被浓缩在一角，只有原来的礼拜堂还是老建筑，除了钟塔加高一层以外，礼拜堂还是原貌，保留了张爱玲笔下的记忆。教学楼、宿舍楼和膳堂都已经移位重建，原来用回廊围合的庭园已经不见踪影。所幸本书的作者绘制出了当年的地图，让我们可以对照张爱玲的叙事，想象当年的面貌。

张爱玲当年读书的大学——圣约翰大学是今天的华东政法大学(长宁校区)。由于是上海市文物保护单位，校园几乎完整地保留了昔日的建筑和面貌，树木仍旧郁郁葱葱。尽管张爱玲在这里只待了几个月，她的踪迹依然随处可寻。当年教会创办的学校惯用西式建筑屋身覆以中式屋顶，成为中西

合璧欧亚式中国装建筑，校园内 19 世纪末 20 世纪初建造的大多数建筑都由当年上海最负盛名的英国建筑师事务所通和洋行（Atkinson & Dallas）设计，中国建筑师范文照曾经在 1929 年设计了交谊室，这些建筑大体上保存完好。校园内的建筑有过些许的改造，原先以人名命名的楼名后被更改，建于 1884 年的礼拜堂在 1980 年拆除后建起了图书馆，牌坊也曾经重建，多次修缮过的建筑屋顶有些走形，但格局还是原来的。2018 年重新修缮过的格致楼恢复了起翘的檐角。2019 年上海市文物局向国家文物局申请，将原圣约翰大学校园升格为全国重点文物保护单位。

书中写到了张爱玲曾与之有过交集的武定公寓——昔日的开纳公寓及其对面的明月邨、美丽园、重华公寓、卡尔登公寓和常德公寓等地。常德公寓当年称作爱林登公寓（亦即爱丁顿公寓），也许是最为人熟知的张爱玲故居，是张迷们的“朝圣之地”。这座装饰艺术风格的公寓由英国建筑师事务所锦名洋行（Cumine & Co.）的甘少明（Eric Byron Cumine）设计，1936 年建成。1939 年张爱玲随母亲、姑姑初搬入这里，1942 年从香港返沪后她又回到这栋楼里住了几年。那几年是上海的乱世，是她人生最为跌宕起伏的时期，也是她写作的鼎盛时期。她在这里恋爱、结婚，饱受感情煎熬，可以想象她的爱恨情仇是多么强烈，这里也是她最为怀念的地方。

张爱玲描写过的众多场所都经历了不同的命运，有的只留存在记录中，有的已经面目全非，有的改变了名称，有的依然辉煌。《文学地图》让这些记忆得以延续，让张爱玲的文字得以复苏。《文学地图》在当前众多关于上海历史文化的图书中另辟蹊径，使文学与建筑“联姻”。张爱玲的文学记述帮助我们去阅读她、阅读上海，为上海抹上一笔重彩；这些文字其实也是一部上海近代建筑的导读，她的描述为这些建筑平添了一份诗意。



2019 年 5 月 7 日

## Foreword

If we are to count the cultural celebrities of modern Shanghai, Eileen Chang must rank at the top. Her footprints spreaded across the former International Settlement and the French Concession areas, and her literary and living spaces were closely tied to the modern architecture of Shanghai.

The book, *Eileen Chang's Shanghai*, is a literary map of Eileen Chang, spanning across 30 years of her life and career in the city. The book not only brings back the history and memories of the bygone days but also leads us to the historic structures of the city where she left her trace. Beautifully written, the book gives us a peep into the highs and lows of Shanghai in the early 20th century.

Eileen Chang's talent is compatible with the spirit of the city that nurtured her. On the other hand, it is hard to talk of Shanghai without mentioning Eileen Chang. The food and memories of the city can all be traced in her books.

The house on the south bank of the Suzhou Creek, where Eileen Chang was born, was built between 1888 and 1901. It was specially designed for Li Hongzhang (Eileen Chang's great grandfather) by Albert Edmund Algar (1873–1926), a Canadian neoclassical architect. A photograph of the house, entitled "House of Li Hongzhang," can be found in an English book on Shanghai, which was published in 1908. Much has changed in years gone by. Today, we can only rely on our rich imagination to picture what it might have looked like during Eileen Chang's early days. After several renovations, the building now serves as the community activity center. The entrance porch on the south was demolished, and another building and a corridor were built in the south garden.

Eileen Chang spent six years of her middle and high school life at the St. Mary's Hall Girls School. The campus of the former aristocratic girls' school is now a towering urban mixed-use complex — the Raffles City Changning. History has been condensed in a corner where only the original chapel remains along with the bell tower. Except for the additional layer over the bell tower, the chapel manages to retain a piece of Eileen Chang's memory as penned in her articles.

However, the teaching buildings, the dormitory and the dining hall were all demolished and rebuilt. The corridor, which went around the central courtyard, was gone. Fortunately, a pair of pictures of different times in the book may help in restoring some of the original structure that existed during Eileen Chang's time.

The St. John's University is today the Changning campus of East China University of Political Science and Law. The campus, protected as Shanghai immovable cultural relics, almost completely retains the architecture and appearance of the past. Although Eileen Chang only studied here for a few months, her trails can still be traced. The trees on the campus have grown bigger. Like most of the schools founded by the church, it used to have a "Chinese" roof capped over the Western-style construction. Now, it features an Asian-European architecture with Chinese decorations. Most of the buildings in the early 20th century were designed by Atkinson & Dallas, the most prestigious British architecture firm in Shanghai at that time. In 1929, Chinese architect Fan Wenzhao (Robert Fan) helped to design the Activity Room on the campus. All are finely preserved. Minor changes have been made on certain buildings, for instance, some buildings have been renamed. The chapel built in 1884 was pulled down and a library was built on the original plot in 1980. Most of the roofs and memorial archways though look different after many renovations, still retain the original structure. The Gezhi Building regained its upturned eaves after the latest renovation in 2018. In 2019, the campus was upgraded as the National Cultural Relics Unit under the protection of the government.

The book also mentions several apartment buildings where Eileen Chang lived, such as the Kinnear Apartments, Chonghua Apartments, Carlton Apartments and the Eddington House.

The Eddington House on Changde Road is perhaps the most well-known of the above buildings, where fans of Eileen Chang can pay their tribute and read her books in the café downstairs. This Art Deco apartment building built in 1936 was designed by Gan Shaoming (Eric Byron Cumine) with Cumine & Co., a British architectural firm.

In 1939, Eileen Chang moved to the Eddington House with her mother and

aunt. In 1942, she returned from Hong Kong after the outbreak of the war in Pacific, and moved into the same building again with her aunt. During the years she lived in the Eddington House, she became one of the most popular writers in town. Here, she fell in love and married Hu Lancheng, only to go through an emotional turmoil later. Her first marriage then came to an end. It is not difficult for us to imagine the gamut of emotions she may have experienced in this apartment. As so much happened in the Eddington House, she missed the place a great deal in her later years.

Many of the places described in Eileen Chang's novels have gone through varied fortunes — some retained only in record books, others unrecognizable, few others surviving with new names. Very few of them have been well preserved.

*Eileen Chang's Shanghai* allows these memories to continue as we live through her works.

There are many books about the history and culture of Shanghai but this is one of the rare works that combine literature and architecture, giving readers a fresh new angle in appreciating Eileen Chang's writings. Her depiction gives a poetic touch to these buildings in Shanghai.

At the same time, it also serves as a guide to Shanghai's modern architecture.

Zheng Shiling

May 7, 2019