



美好城市的百年变迁

——明信片上看上海

The Centennial Changes of the Dynamic City

Seeing Shanghai from the Postcards

上册

Vol. I

姚丽旋 编著

Compiled by Yao Lixuan

上海大学出版社

Shanghai University Press

美好城市的 百年变迁

——明信片上看上海

The Centennial Changes of the Dynamic City

Seeing Shanghai From the Postcards

【上册】 Vol. I

姚丽旋 编著

Compiled by Yao Lixuan

上海大学出版社

Shanghai University Press

图书在版编目 (CIP) 数据

美好城市的百年变迁：明信片上看上海 / 姚丽旋编著. —
上海：上海大学出版社，2010.4
ISBN 978-7-81118-593-5

I. ①美… II. ①姚… III. ①明信片—中国—图集 ②上海市—地方史—20世纪 IV. ①G894.1 ②K295.1

中国版本图书馆 CIP 数据核字 (2010) 第 036153 号

责任编辑：傅玉芳 柯国富

技术编辑：孟 玫

装帧设计：柯国富

美好城市的百年变迁——明信片上看上海

The Centennial Changes of the Dynamic City

Seeing Shanghai From the Postcards

姚丽旋 编著

Compiled by Yao Lixuan

上海大学出版社出版发行

(上海市上大路 99 号 邮政编码 200444)

(<http://www.shangdapress.com> 发行热线: 021-66135110)

出版人：姚铁军

上海中华印刷有限公司印刷 各地新华书店经销

开本：889 × 1194 1/16 印张：45.5 字数：910 千

2010 年 4 月第 1 版 2010 年 4 月第 1 次印刷

ISBN 978-7-81118-593-5/G · 537

定价：320.00 元 上下册 (精装)

目 录

Contents

【上册】

Vol.I

一 老城厢



1. Shanghai Old Town

1

二 黄浦江



2. Huangpu River

61

三 苏州河



3. Suzhou River

119

四 外滩



4. The Bund

173

五 南京路



5. Nanjing Road

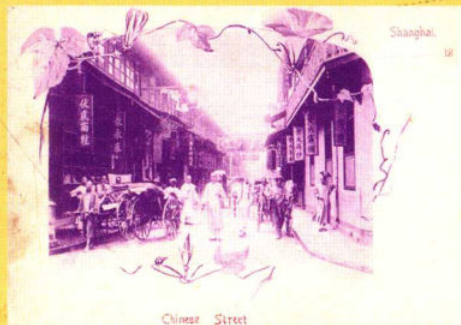
265

【下册】

Vol.II

八

其他街区



8. Other Blocks

443

六
淮海路



6. Huaihai Road

351

九

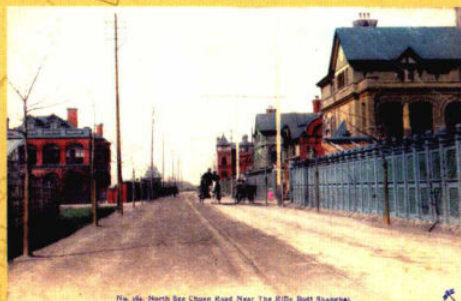
交通发展



9. Transportation Development

537

七
四川路



7. Sichuan Road

393

十

城乡风貌



10. Urban and Rural Scenery

609

上海外白渡桥

老城厢

Shanghai Old Town



Section of Wall, Old Shanghai

Photo by Dennis Ston & Sullivan

老城厢即上海县城城墙内外约7平方公里区域的统称，是上海这座名城的发祥地。上海县于元代（1291年）建立，当时仅有人口6万多户。为了防止倭寇侵袭，1553年建造城墙；为了繁荣和经济发展，1912年拆城筑路。如今由中华路与人民路衔接而成的环形路，就是过去城壕的地基。七百年的风雨沧桑，一百年的历史巨变，老城厢仍传承着这座城市的历史文脉，因为这里留有上海的老地方，保存着人们的老记忆。

Shanghai Old Town, the cradleland of Shanghai, refers to the seven square kilometers' area from the inner part to the outer part of the city wall of Shanghai County. Shanghai County was established in Yuan Dynasty (1291) with only about 60 thousand families at that time. To guard against the Japanese invaders, the city wall was built in 1553. For prosperity and the development of economy, the wall was removed and roads were paved in 1912. Now the circular road formed by the junction of Zhonghua Road and Renmin Road was the previous base of the moat. Through 700 years of social vicissitudes and 100 years of drastic changes, the Old Town still passes on the city's historical essence because with many old places of Shanghai, it holds people's old memories.

美好城市的百年变迁——明信片上看上海

POST CARD.

- 1898年中国编制的上海地图
- Map of Shanghai made in China in 1898



Shanghai
Old Town



- 清末老城墙
- The ancient citywall in the late Qing Dynasty



Creek of Chinese city, Shanghai.



- 20 世纪初护城河几尽干涸
- The moat almost dried up in the 1900s

1
Shanghai Old Town



Native City in Shanghai.

- 干涸的护城河
- The moat almost dried up

BRIDGE BETWEEN CHINESE CITY & FRENCH CONCESSION, SHANGHAI.



- 连接老城厢与法租界的桥
- Bridge between the Old Town and the French Concession

SHANGHAI BORDER BETWEEN FRENCH CONCESSION & CHINESE CITY



- 1898 年建于法租界的水塔
- Water tower built in the French concession in 1898

SHANGHAI, Native Town



- 重建于 1815 年的大境阁
- Dajing Pavilion rebuilt in 1815

中国人民邮政
明信片

1
Shanghai Old Town



- 上海仅存的明代古城墙遗址
- The only existing site of the ancient city of Ming Dynasty in Shanghai



- 流入宝带门（小东门）的方浜河
- Fangbang River flows into Baodai Gate (Minor East Gate)

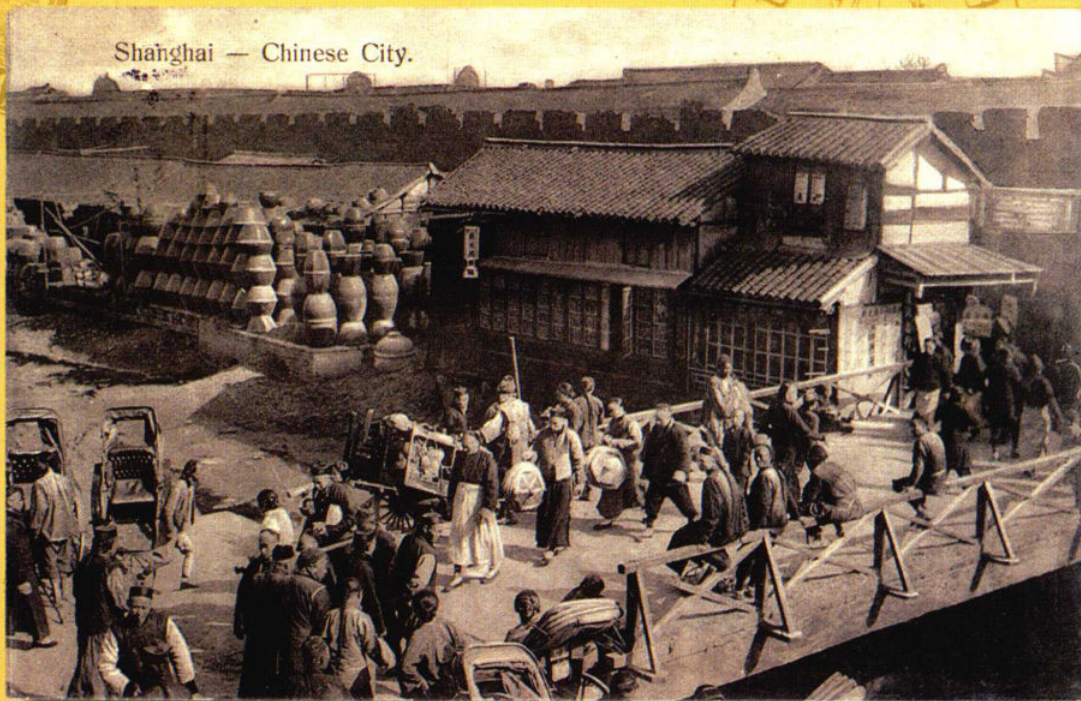


SAMPAN WOMEN ON RIVER OUTSIDE SHANGHAI NATIVE CITY

- 城外的河浜与木桥
- River and wood bridge outside the city



- 老城晏海门（老北门）
- Yanhai Gate of the Old City (The Old North Gate)



- 老城晏海门（老北门）
- Yanhai Gate of the Old City (The Old North Gate)



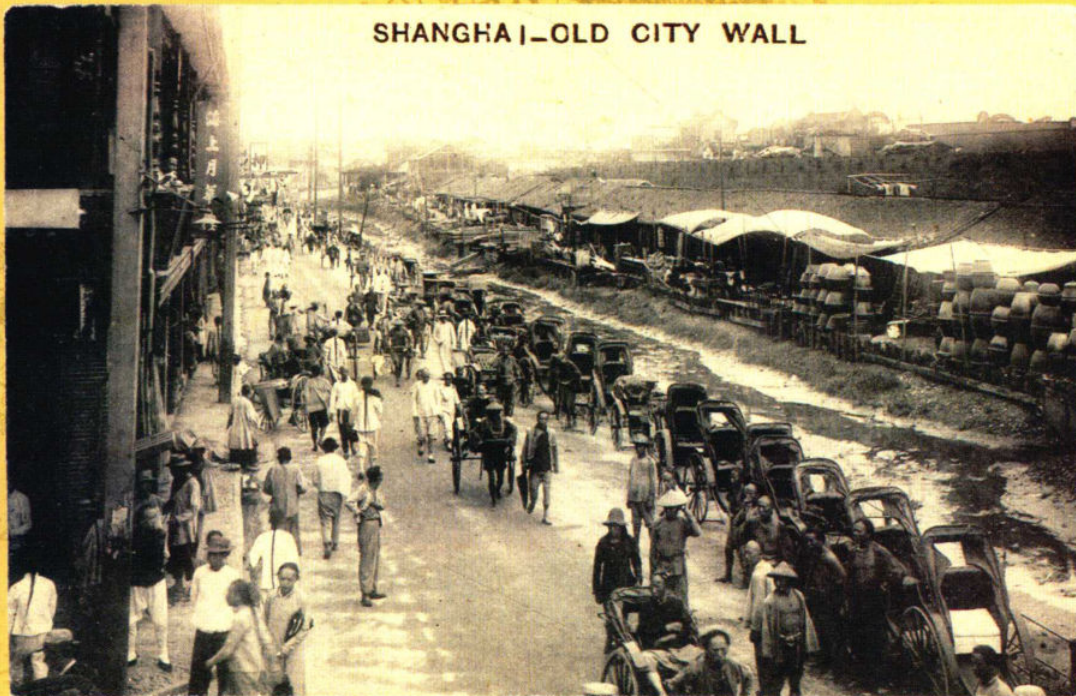
- 建于1860年的障川门（新北门）外景，今丽水路北端
- The outside scene of Zhangchuan Gate (The New North Gate) built in 1860. (Today's north end of Lishui Road)

上海新北门外城河浜



- 新北门外城河浜
- Creek outside the New North Gate

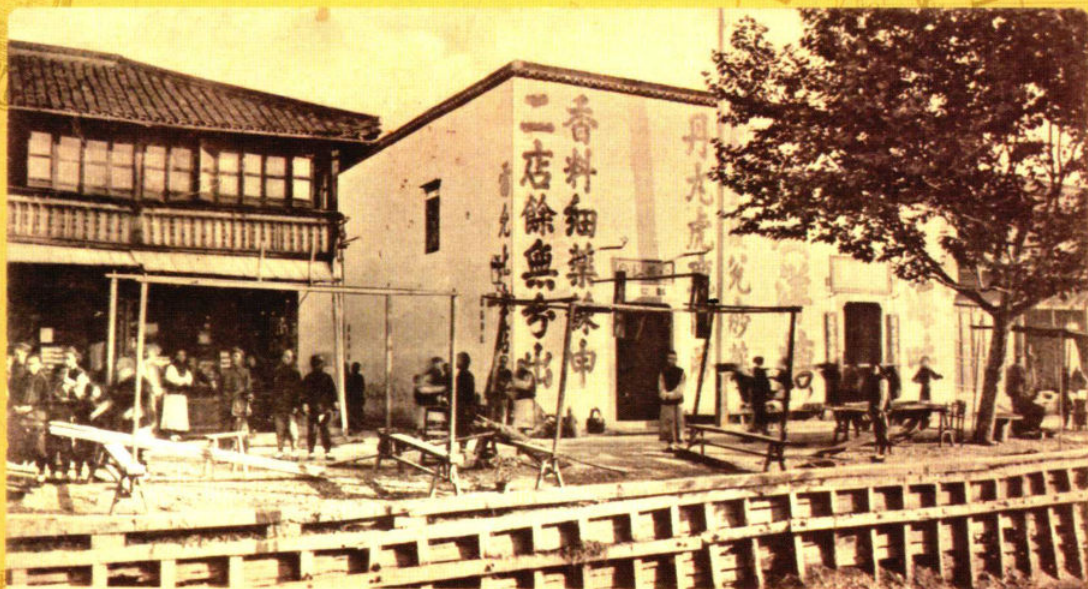
SHANGHAI | OLD CITY WALL



- 老城外街景
- The street scene outside the old city

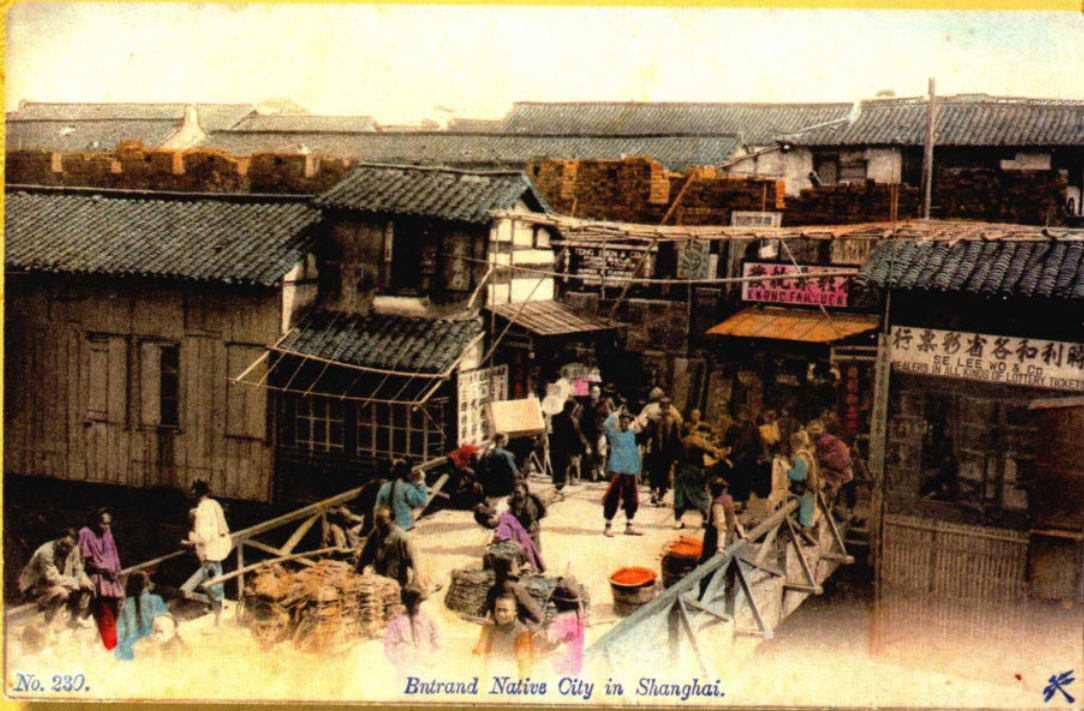
1
Shanghai Old Town

中国人民邮政
明信片



Shanghai 23/12 - 1905 Chineseische Apotheke
They prepare medicine out of dead snakes, frogs, the morments of animals & advise to them all sorts of curative effects. M. Cavaler
 No 253

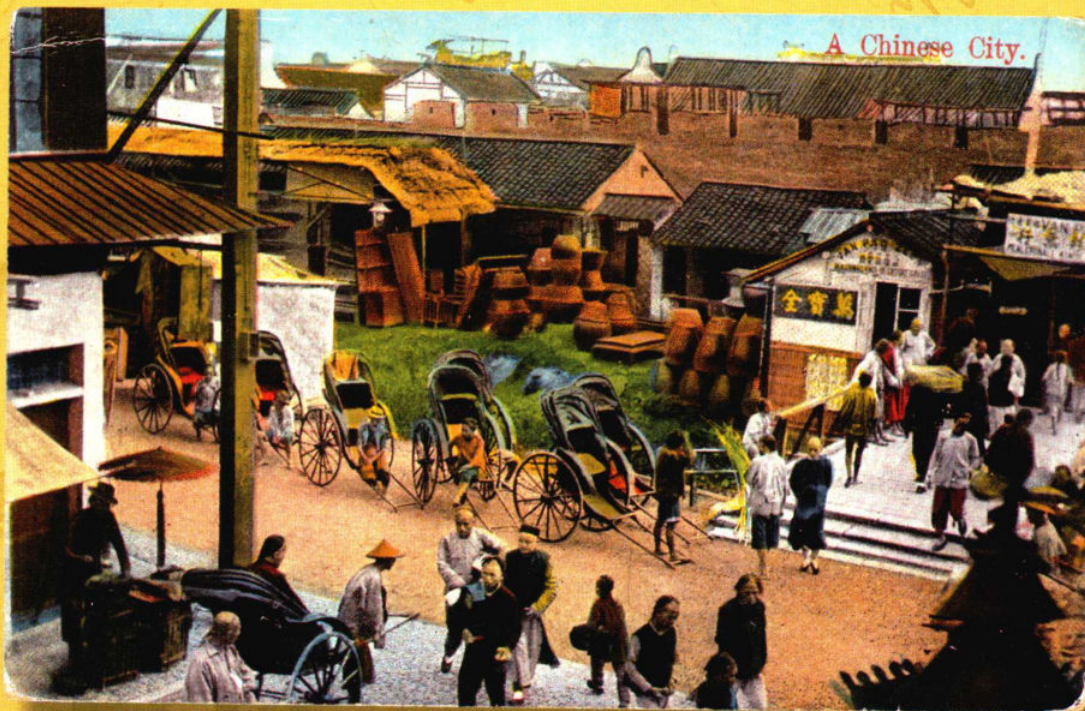
- 早期的雷允上药店
- The early Leiyunshang pharmacy



No. 230.

Entrand Native City in Shanghai.

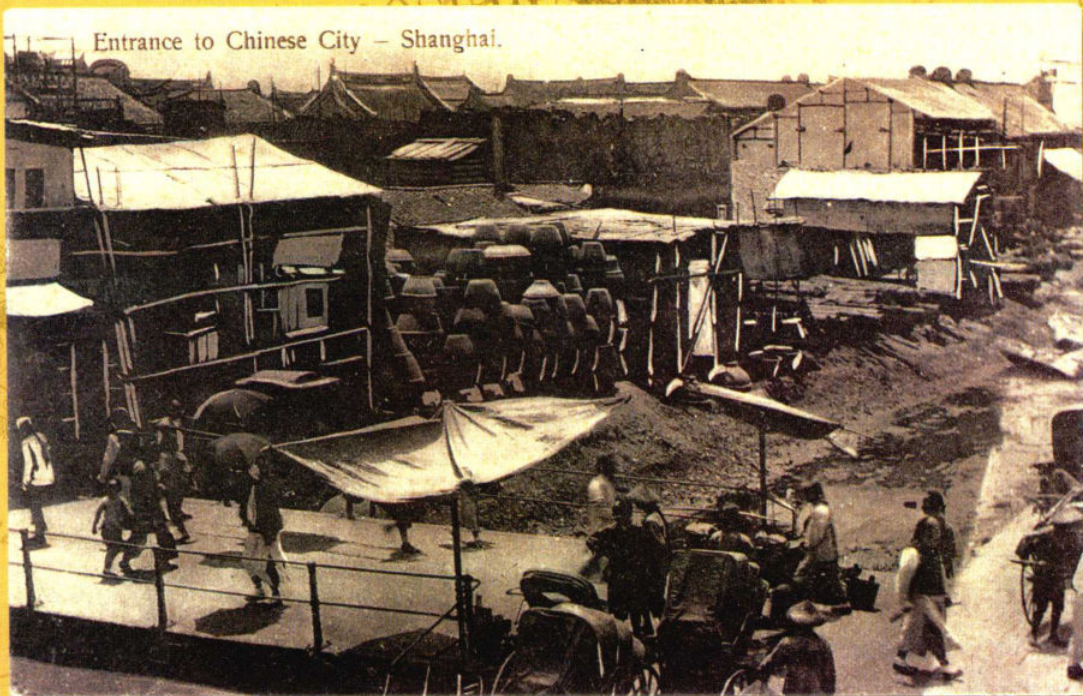
- 设在城门边的彩票行
- Lottery office at the side of the city gate



A Chinese City.

- 老城出入口及待客的人力车
- The gateway of the ancient city and the rickshaws a waiting passengers

Entrance to Chinese City — Shanghai.



- 老城入口
- The entrance to the old city

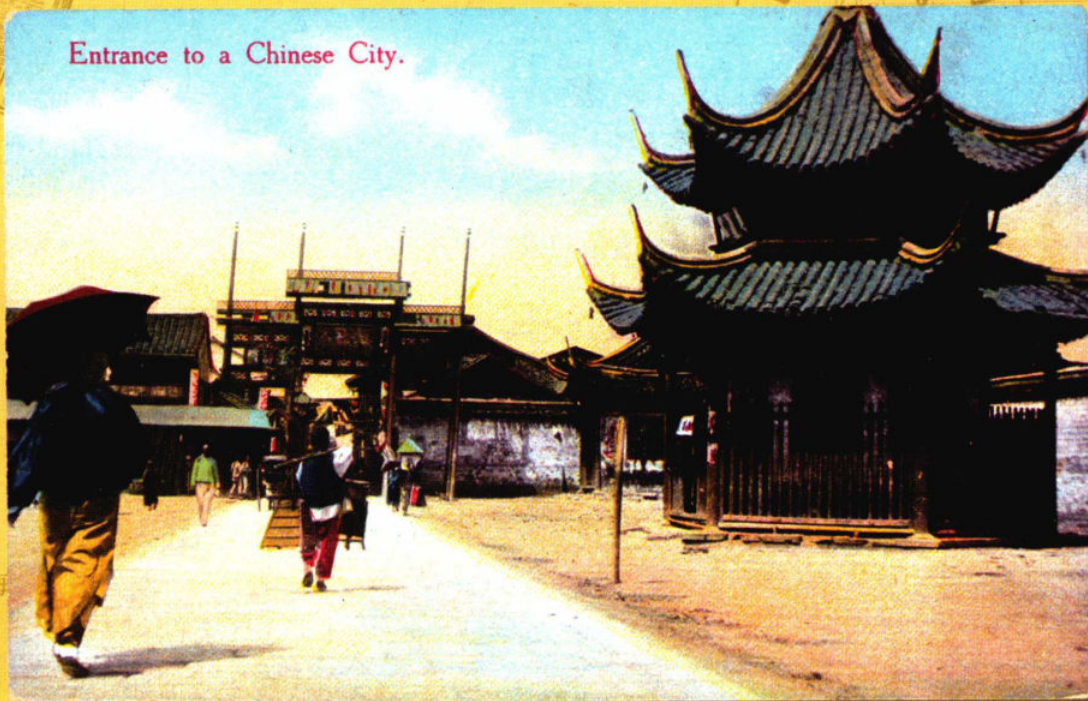
中国人民邮政
明信片

1

Shanghai Old Town



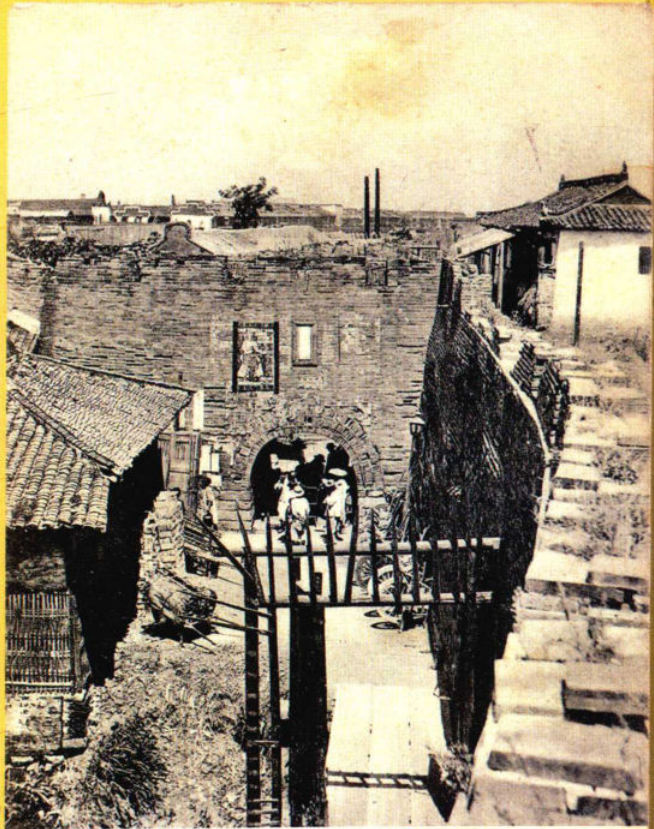
Entrance to a Chinese City.



- 老城入口
- The entrance to the old city

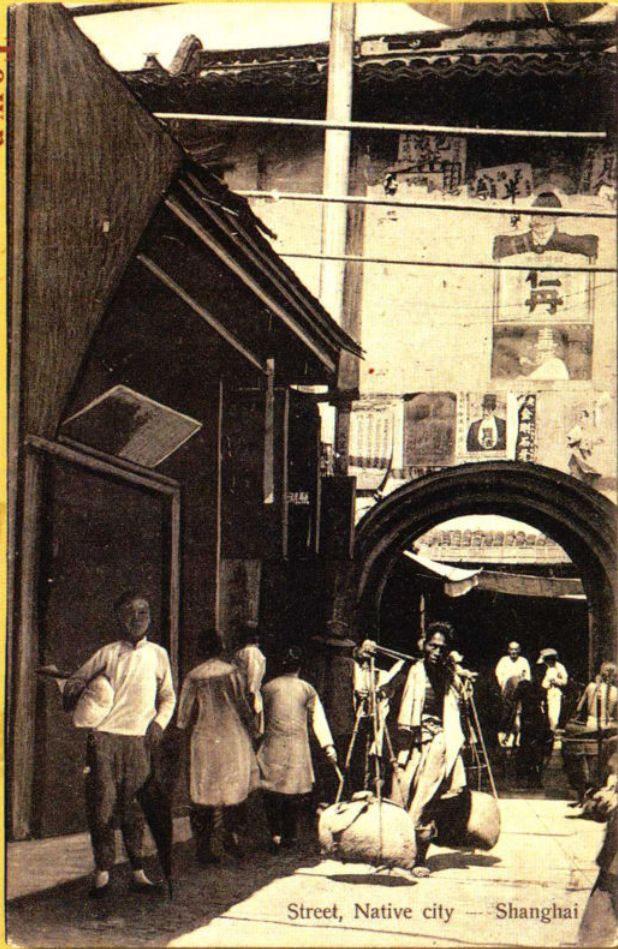
Shanghai
Old Town

- 城门及瓮城
- The city gate and the barbican entrance to the city



Westthor von Shanghai City
 Meine Grüße an die Kipungjai findet
 Sie herzlich
 U. Beck

No. 268. Max Nössler & Co., Shanghai, 38 Nanking Road



Street, Native city — Shanghai