

风景  
园林

高等院校风景园林类专业“十三五”规划系列教材·应用类

# 风景园林 专业英语

主编 武涛 王霞  
副主编 袁嘉 李颖 高天 赵炜  
主审 陈宇 朱晓霞 张齐美晨  
徐锋

FENGJING YUANLIN  
ZHUANYE YINGYU



重庆大学出版社

国家一级出版社  
全国百佳图书出版单位

风景  
园林

高等院校风景园林类专业“十三五”规划系列教材·应用类

FENGJING YUANLIN ZHUANYE YINGYU

- 园林植物学
- 园林树木学
- 园林花卉学
- 园林植物栽培与养护
- 园林生态学原理及应用
- 园林植物病虫害防治
- 园林工程制图与识图
- 园林工程制图与识图习题集
- 园林工程测量
- 中外园林史
- 中外风景园林名作精解
- 室内植物装饰设计
- 插花与花艺设计
- 盆景制作与鉴赏
- 园林艺术
- 计算机辅助园林设计
- 园林建筑材料与构造
- 风景园林工程
- 园林施工图设计与绘制
- 风景园林设计初步
- 城市绿地系统规划
- ▶ 风景园林专业英语
- 风景园林建筑设计
- 风景园林规划设计
- 居住区环境景观设计方法与案例解析
- 风景名胜区规划
- 园林植物景观设计
- 园林工程项目管理与监理
- 园林工程招投标与概预算



更多服务

ISBN 978-7-5689-1521-2



9 787568 915212

定价：48.00 元

风景  
园林

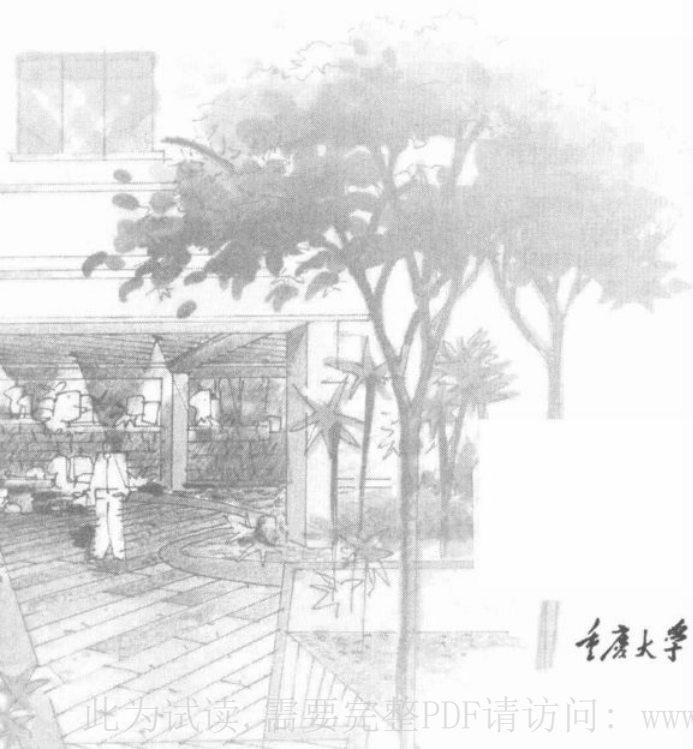
高等院校风景园林类专业“十三五”规划系列教材·应用类

# 风景园林 专业英语

主 编 武 涛 王 霞  
副 主 编 袁 嘉 李 晓 颖 高 天 赵 炜  
主 审 徐 陈 袁 嘉 李 晓 颖 高 天 赵 炜  
徐 宇 朱 晓 霞 张 齐 美 晨  
徐 锋

FENGJING YUANLIN  
ZHUANYE YINGYU

贵州师范学院内部使用



重庆大学出版社

此为试读, 需要完整PDF请访问: [www.ertongbook.com](http://www.ertongbook.com)

## 内容提要

本书是一本适用于风景园林(包括园林、景观、景观建筑)及其他相关专业的英语教材,编写宗旨在于提高学生专业英语的阅读能力、运用能力,同时拓展专业知识。

全书共分为8个部分16单元,第一部分为概述,是有关风景园林专业与职业介绍的总述;第二、三、四部分分别为风景园林史论、现代风景园林发展、风景园林人物及作品,回顾了风景园林从古至今,直至当前的重要设计思想和作品;第五部分为规划设计理论与方法,是有关场地总体规划、详细景观设计和生态规划设计的方法论;第六部分为工程与技术,从工程角度解析项目实施过程中的专业问题;第七部分为研究与动态,节选专业期刊中热点专题,以开阔读者视野;第八部分为职业与从业,从职业规范、执照要求方面介绍专业实际问题。

本书选材广泛,内容经典,涉及风景园林专业的发展历史、风景园林/景观规划设计的理论与方法、风景园林工程、从业状况以及最新的理论动态。书中诸多珍贵、经典的文献资料有助于读者深入了解该专业在西方的发展历程,同时也有助于将中国园林推向世界,帮助从业人员运用英语这门工具,更多地学习国外风景园林发展情况,更好地与不同背景的专业人士进行交流,进而推动我国风景园林事业的发展。

本书可作为风景园林、城市规划、建筑学、环境艺术、旅游管理等不同学科背景的专业师生及相关建设和管理人员的参考书或教材。

### 图书在版编目(CIP)数据

风景园林专业英语 / 武涛, 王霞主编. -- 重庆: 重庆大学出版社, 2020. 1

高等院校风景园林类专业“十三五”规划系列教材. 应用类

ISBN 978-7-5689-1521-2

I. ①风… II. ①武… ②王… III. ①园林设计—英语—高等学校—教材 IV. ①TU986. 2

中国版本图书馆 CIP 数据核字(2019)第 059066 号

### 风景园林专业英语

主 编 武 涛 王 霞  
副主编 袁 嘉 李晓颖 高 天 赵 炜  
陈 宇 朱晓霞 张齐美晨

策划编辑:何 明

特约编辑:游奉溢

责任编辑:何 明 版式设计:莫 西 黄俊棚 何 明

责任校对:张红梅 责任印制:赵 晟

重庆大学出版社出版发行

出版人:饶帮华

社址:重庆市沙坪坝区大学城西路 21 号

邮编:401331

电话:(023)88617190 88617185(中小学)

传真:(023)88617186 88617166

网址:<http://www.cqup.com.cn>

邮箱:[fxk@cqup.com.cn](mailto:fxk@cqup.com.cn) (营销中心)

全国新华书店经销

重庆华林天美印务有限公司印刷

开本:787mm×1092mm 1/16 印张:20.25 字数:673 千

2020 年 1 月第 1 版 2020 年 1 月第 1 次印刷

印数:1—2 000


ISBN 978-7-5689-1521-2 定价:48.00 元

本书如有印刷、装订等质量问题,本社负责调换  
版权所有,请勿擅自翻印和用本书  
制作各类出版物及配套用书,违者必究




· 编委会 ·

陈其兵 陈 宇 戴 洪 杜春兰 段晓鹃 冯志坚  
付佳佳 付晓谕 高 天 谷达华 郭 晖 韩玉林  
黄 晖 黄 凯 黄磊昌 吉文丽 江世宏 李宝印  
李 晖 林墨飞 刘福智 刘 骏 刘 磊 鲁朝辉  
马 辉 孙陶泽 申晓辉 唐 建 唐贤巩 王 霞  
翁殊斐 武 涛 邢春艳 徐德秀 徐海顺 谢吉容  
杨瑞卿 杨学成 余晓曼 袁 嘉 袁兴中 张建林  
赵九洲 朱 捷 朱晓霞





## · 编写人员 ·

- |     |      |          |
|-----|------|----------|
| 主 编 | 武 涛  | 南京农业大学   |
|     | 王 霞  | 四川大学     |
| 副主编 | 袁 嘉  | 重庆大学     |
|     | 李晓颖  | 南京林业大学   |
|     | 高 天  | 西北农林科技大学 |
|     | 赵 炜  | 四川大学     |
|     | 陈 宇  | 南京农业大学   |
|     | 朱晓霞  | 甘肃农业大学   |
|     | 张齐美晨 | 四川大学     |
| 参 编 | 王小文  | 南京农业大学   |
|     | 孙陶泽  | 长江大学     |
|     | 王倩娜  | 四川大学     |
|     | 廖晨阳  | 四川大学     |
|     | 母洪娜  | 长江大学     |
| 主 审 | 徐 锋  | 剑桥大学     |
- 

## PREFACE / 前言

随着近些年风景园林事业的迅速发展,不论是专业发展还是职业需求,都对英语的使用提出了更高的要求。专业教师和学生需要了解国外专业发展动态,专业学者需要运用英语进行国际学术交流,从业者在国际项目中需要运用英语与外籍人士交流合作。可见,提高英语运用水平,加强与国际风景园林界的联系,是推动我国风景园林事业发展的需要。

风景园林专业英语教学的主要目的和任务是帮助专业学生利用英语这门工具,通过阅读获取国外与本专业相关的信息,通过写作训练提高撰写专业性文字的能力,在专业实践中能够综合运用英语进行交流。具体来说,主要解决三个实际问题:一是掌握专业术语和专业常用词汇;二是提高阅读和翻译能力,英文翻译应尽量达到“信、达、雅”的要求,文字表述流畅、通顺,中文翻译成英文应尽量做到用词准确,语法无误;三是提高实际应用能力,包括英文资料查阅、英文论文和设计说明撰写、简单的语言交流等。

正是基于以上的目的,本教材在编写过程中选择难易适中、覆盖面广的文章或论文,以期帮助读者在学习教材的同时,扩大和积累一定量的专业术语和常用词汇。根据国外外语教学专家的研究,生词量在3%以下时,可以不借助词典,自由阅读。此时可通过上下文的联系,把不认识的生词猜出来。目前大学教育阶段,应掌握的词汇量大约在4 000个单词,此时阅读一般性的英文科技文献,生词量大约在6%。那么如何将6%的生词量降到3%以下呢?当然需要增加一些词汇积累。那么增加哪些单词呢?显然是文献中重复出现频率比较高的单词。统计资料表明,在每一个专业的科技文献中,该专业最常用的科技术语大约只有几百个,而且它们在文献中重复出现的频率很高。因此,在掌握4 000个单词的基础上,在专业阅读阶段中,有针对性地通过大量阅读,扩充1 000个左右与本专业密切相关的词汇,便可以逐步达到自由阅读专业文献的目标。基于这样的考虑,本教材设有15个单元,每单元各包含3篇文章,共计45篇,总词汇量约有10万个,涉及生词约1 500个,专业常用词汇不少于1 000个。

在多年的专业英语教学中,我们发现在生词量较低的情况下,学生在阅读和翻译中仍存在许多问题。主要原因在于中英文文法差异较大,转换过程中容易发生理解偏差和错误,翻译不符合中文表达习惯。为了帮助读者理解和学习,每篇文章后附有译文以供参考。

本教材文章的选择主要来源于西方高校风景园林专业本科教材、具有影响力的专业书籍、核心期刊文献、设计大师著述和设计名作赏析。具体内容如下:

第一部分:风景园林概述(第1单元),是有关风景园林专业与职业介绍的总述,文章选自美国风景园林师协会(ASLA)对风景园林的描述与定义,以及美国著名风景园林教育家迈克尔·劳瑞编著,美国和英国大学风景园林专业入门教材《风景园林导论》。

第二部分:风景园林史论(第2—4单元),回顾了世界风景园林发展的过程,根据地区的不同分为东方园林、西方园林和伊斯兰园林,文章选自西方园林史原版论著。

第三部分:近现代风景园林发展(第5—8单元),从风景规划、城市开放空间、公园和广场、庭院和企事业单位几个方面展现了西方近现代风景园林的发展和重要作品,文章选自近现代风景园林教育家、理论家的论著。

第四部分:风景园林人物及作品(第9—10单元),介绍了对现代风景园林影响深远的人物和作品,包括奥姆斯特德、丹·凯利、丘奇、麦克哈格、彼得·沃克和玛萨·舒瓦茨。

第五部分:规划设计理论与方法(第11—13单元),是有关场地总体规划、详细景观设计和生态规划设计的方法论。

第六部分:工程与技术(第14单元),解析了风景园林项目运行过程中有关工程建设的技术问题。

第七部分:研究与动态(第15单元),节选专业期刊论文,内容均为目前热点专题,在开阔视野的同时,帮助学习者了解学术论文的英文撰写方法。

在15个单元中,每单元包括3篇文章,由1篇课文、2篇扩展阅读以及注释、术语表、生词表及思考题组成。在使用本教材过程中,教师可根据侧重点和实际情况,选择不同单元作为授课内容;自学读者也可根据个人爱好进行选择阅读。

本教材由武涛、王霞担任主编,负责全书的统稿工作。袁嘉、李晓颖、高天、赵炜、陈宇、朱晓霞、张齐美晨担任副主编,王小文、孙陶泽、王倩娜、廖晨阳、母洪娜参编。此外,还要特别感谢重庆大学出版社何明女士为本书付出的大量心血。

由于风景园林专业英语教学内容涉及的专业知识庞杂,英文语法多元,难免会存在不足之处,真诚欢迎各位行业同仁提出宝贵意见,以便日后进一步改进完善。

编者

2019年11月

# CONTENTS 目录

## **PART I Introduction to Landscape Architecture**

第一部分 风景园林概述 .....	1
UNIT 1 INTRODUCTION .....	2
TEXT What is Landscape Architecture(什么是风景园林) .....	2
Reading Material A A Theory of Landscape Architecture (风景园林的理论) .....	13
Reading Material B Garden and Gardening (花园与造园) .....	17

## **PART II History of Garden**

第二部分 园林史论 .....	23
UNIT 2 EASTERN TRADITIONAL GARDEN .....	24
TEXT Chinese Garden(中国园林) .....	24
Reading Material A Two Main Forms of Chinese Garden (中国园林的两种主要形式) .....	31
Reading Material B Japanese Garden (日本园林) .....	37
UNIT 3 WESTERN TRADITIONAL GARDEN .....	42
TEXT The Gardens in Ancient Egypt(古埃及的园林) .....	42
Reading Material A André Le Nôtre and French Gardens (安德烈·勒·诺特尔与法国园林) .....	50
Reading Material B English Landscape Gardens (英国风景园林) .....	59
UNIT 4 ISLAMIC GARDEN .....	70
TEXT Islamic Garden(伊斯兰园林) .....	70
Reading Material A Islamic Gardens of Spain(西班牙的伊斯兰园林) .....	75
Reading Material B Taj Mahal—Mughal Garden (泰姬陵——莫卧儿园林) .....	79

## **PART III Development of Landscape Architecture in Modern Time**

第三部分 近现代风景园林发展 .....	85
UNIT 5 LANDSCAPE PLANNING AND PROTECTION .....	86
TEXT Landscape Planning(景观规划) .....	86
Reading Material A Landscape Scenery(自然风景) .....	90
Reading Material B National Parks(国家公园) .....	95
UNIT 6 URBAN SPACE .....	101

TEXT Metropolitan Open Space(都市开放空间)	101
Reading Material A City Planning(城市规划)	106
Reading Material B Parkway and Recreational Areas(公园道路及休闲区)	110
UNIT 7 URBAN GREEN SPACE	117
TEXT Urban Parks(城市公园)	117
Reading Material A Streetscape, Squares and Plazas(街景和广场)	123
Reading Material B Waterfronts(滨水区)	129
UNIT 8 RESIDENTIAL, INSTITUTIONAL AND CORPORATE LANDSCAPE	135
TEXT Gardens(花园)	135
Reading Material A Housing Environments(居住环境)	141
Reading Material B Institutional and Corporate Landscapes (社会机构及公司景观)	145
<b>PART IV Characters, Ideas and Works of Landscape Architecture in Modern Time</b>	
<b>第四部分 近现代风景园林人物、思潮及作品</b>	152
UNIT 9 LANDSCAPE PEOPLE AND THOUGHTS I	153
TEXT Frederick Law Olmsted(弗雷德里克·劳·奥姆斯特德)	153
Reading Material A Ian McHarg(伊恩·麦克哈格)	158
Reading Material B Thomas Church(托马斯·丘奇)	162
UNIT 10 LANDSCAPE PEOPLE AND THOUGHTS II	168
TEXT Dan Kiley(丹·凯利)	168
Reading Material A Peter Walker(彼得·沃克)	174
Reading Material B Martha Schwartz(玛萨·舒瓦茨)	179
<b>PART V Theories and Methods of Planning and Design</b>	
<b>第五部分 规划设计理论与方法</b>	183
UNIT 11 ECOLOGY AND ENVIRONMENT PROTECTION	184
TEXT Environmental Movement(环境运动)	184
Reading Material A Ecological Principles for Managing Land Use I (土地利用管理的生态原则 I)	190
Reading Material B Ecological Principles for Managing Land Use II (土地利用管理的生态原则 II)	197
UNIT 12 METHODS OF PLANNING AND DESIGN	202
TEXT Site Volume(空间)	202
Reading Material A The Conceptual Plan(概念规划)	207
Reading Material B The Planning-Design Process(规划设计过程)	213



UNIT 13	LANDSCAPE DETAIL DESIGN PRINCIPLES	220
TEXT	Site Systems (场地系统)	220
Reading Material A	Significance of Landform(地形的重要性)	226
Reading Material B	Spatial Characteristics of Plants(植物的空间特性)	232
<b>PART VI Engineering and Technology</b>		
第六部分	工程与技术	241
UNIT 14	LANDSCAPE ENGINEERING	242
TEXT	Site Development Guidelines(场地开发导则)	242
Reading Material A	Landscape Engineering I (风景园林工程 I)	251
Reading Material B	Landscape Engineering II (风景园林工程 II)	258
<b>PART VII Studies and Development of Landscape Architecture</b>		
第七部分	研究与动态	265
UNIT 15	LANDSCAPE STUDIES AND DEVELOPMENTS	266
TEXT	Creating Character through Sustainable and Successful Landscape Design (以可持续方式营造成功景观设计)	266
Reading Material A	Landscape Planning and Design in the Century of the City (城市时代下的风景园林规划与设计)	279
Reading Material B	Landscape Infrastructure: in plain view(景观基础设施探析)	290
附表		302
附表一	欧美地区设置风景园林专业的院校及网址一览(部分)	302
附表二	国际风景园林组织机构一览(部分)	307
附表三	国外风景园林期刊一览(部分)	308
附表四	国际风景园林学术会议	309



# PART I

## Introduction to Landscape Architecture

### 第一部分 风景园林概述

贵州师范学院内部使用

# UNIT 1 INTRODUCTION

## TEXT

### What is Landscape Architecture<sup>[1]</sup>

ASLA<sup>[2]</sup>

什么是风景园林

[1] Although the term “landscape architecture” was invented by a Scotsman (Gilbert Laing Meason, in 1828), it was an American (Frederick Law Olmsted<sup>[3]</sup>) who gave birth to the landscape architecture profession. We should therefore pay close attention to the definition of the profession given by the American Society of Landscape Architects (Fig. 1). It was as follows:

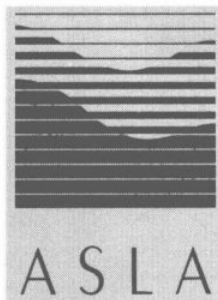


Fig. 1 Emblem of American Society of Landscape Architects

#### A Profession In Demand

[2] From city council rooms to corporate boardrooms, there is increasing demand today for the professional services of landscape architects. This trend reflects the public's desire for better housing, recreational and commercial facilities, and its expanded concern for environmental protection. Residential and commercial real estate developers, federal and state agencies, city planning commissions, and individual property owners are all among the thousands of people and organizations in America and Canada that will retain the services of a landscape architect every year.

[3] More than any of the other major environmental design professions, landscape architecture is a profession on the move. It is comprehensive by definition—no less than the art and science of analysis, planning design, management, preservation and rehabilitation of the land. In providing well-managed design and development plans, landscape architects offer an essential array of services and expertise that reduces costs and adds long-term value to a project.

[4] Clear differences do exist between landscape architecture and the other design professions. Architects primarily design buildings and structures with specific uses, such as homes, offices, schools and factories. Civil engineers apply scientific principles to the design of city infrastructure such as roads, bridges, and public utilities. Urban planners develop a broad overview of development for en-



tire cities and regions. Landscape architects touch on all the above mentioned design professions, integrating elements from each of them. While having a working knowledge of architecture, civil engineering and urban planning, landscape architects take elements from each of these fields to design aesthetic and practical relationships with the land.

## **A Diverse Profession**

[5] Landscape architecture is one of the most diversified of the design professions. Landscape architects design the built environment of neighborhoods, towns and cities while also protecting and managing the natural environment, from its forests and fields to rivers and coasts. Members of the profession have a special commitment to improving the quality of life through the best design of places for people and other living things.

[6] In fact, the work of landscape architects surrounds us. Members of the profession are involved in the planning of such sites as office plazas, public squares and thoroughfares. The attractiveness of parks, highways, housing developments, urban plazas, zoos and campuses reflects the skill of landscape architects in planning and designing the construction of useful and pleasing projects.

[7] From coast to coast, in every region of the world, examples of the landscape architecture profession can be found. Many landscape architects are involved in small projects, such as developing plans for a new city park or site plans for an office building, other members of the profession have contributed their expertise to numerous projects which include:

- Preservation of Yosemite Park and Niagara Falls
- Management plan for the Alaskan Maritime National Wildlife Refuge
- Design of the U. S. Capitol Grounds
- Design of Mount Royal Park in Montreal, Quebec
- Development of Stanford University site
- Creation of Boston's "emerald necklace" of green spaces tying the city to the suburbs
- Plans for Baltimore's park system and Inner Harbor area
- Design of "new towns" such as Columbia, Maryland, and Reston, Virginia
- Landfill reclamation for Fresh Kills in New York and Dyer in Florida
- Plans for Golden Gate National Recreation Area in San Francisco, California
- Sursum Corda Affordable Housing, Washington, D. C.
- Design for water treatment and park facility in Hillsboro, Oregon
- Master plan for King Saud University in Saudi Arabia
- Restoration of the landscape along the Baltimore-Washington Parkway in Maryland

[8] Landscape architects may plan the entire arrangement of a site, including the location of buildings, grading, stormwater management, construction and planting. They may also coordinate teams of design, construction and contracting professionals. Already, federal and state government agencies ranging from the National Park Service to local park planning boards employ a large number of landscape architects. More and more private developers realize that the services of a landscape architect are an integral part of a successful, more profitable project.

## Tracing the Profession's Roots

[9] The origin of today's profession of landscape architecture can be traced to the early treatments of outdoor space by successive ancient cultures, from Persia and Egypt through Greece and Rome. During the Renaissance, this interest in outdoor space, which had waned during the Middle Ages, was revived with splendid results in Italy and gave rise to ornate villas, gardens, and great outdoor piazzas. These precedents, in turn, greatly influenced the chateaux and urban gardens of 17th-century France, where landscape architecture and design reached new heights of sophistication and formality. The designers became well-known, with Andre le Notre<sup>[4]</sup>, who designed the gardens at Versailles (Fig. 2) and Vaux-le-Vicomte<sup>[5]</sup>, among the most famous of the early forerunners of today's landscape architects.

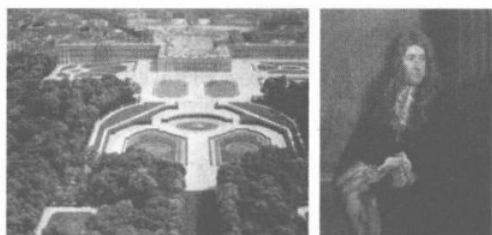


Fig. 2 Andre le Notre and his Versailles garden



Fig. 3 "Capability" Brown and his Blenheim Palace

[10] In the 18th Century, most English "landscape gardeners"<sup>[6]</sup>, such as Lancelot "Capability" Brown<sup>[7]</sup>, who remodeled the grounds of Blenheim Palace<sup>[8]</sup> (Fig. 3), rejected the geometric emphasis of the French in favor of imitating the forms of nature. One important exception was Sir Humphrey Repton<sup>[9]</sup>. He reintroduced formal structure into landscape design with the creation of the first great public parks Victoria Park<sup>[10]</sup> in London (1845) and Birkenhead Park<sup>[11]</sup> in Liverpool (1847). In turn, these two parks would greatly influence the development of landscape architecture in the United States and Canada.

## Frederick Law Olmsted: "Father of American Landscape Architecture"



Fig. 4 Frederick Law Olmsted and his Central Park in New York

[11] The history of the profession in North America begins with Frederick Law Olmsted, who rejected the name "landscape gardener" in favor of the title of "landscape architect", which he felt better reflected the scope of the profession.

[12] In 1863, official use of the designation "landscape architect" by New York's park commissioners marked the symbolic genesis of landscape architecture as a modern design profession.

Olmsted became a pioneer and visionary for the profession. His projects illustrate his high professional standards, including the design of Central Park in New York (Fig. 4) with Calvert Vaux<sup>[12]</sup> in the late 1850's and the U. S. Capitol Grounds<sup>[13]</sup> (Fig. 5) in the 1870's. Olmsted and the Brookline, Mass., firm he founded advanced the concept of parks as well-designed, functional public green spaces amid



the grayness of the urban areas through the well practiced principles of landscape architecture and city planning.

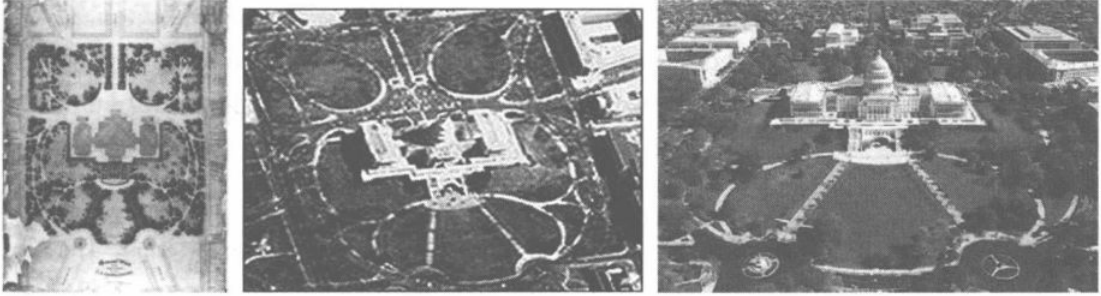


Fig. 5 U. S. Capitol Grounds by Frederick Law Olmsted in the 1870's

### Early Developments: Late 1800's

[13] In the ensuing years, the profession of landscape architecture broadened. It played a major role in fulfilling the growing national need for well-planned and well-designed urban environments. Urban parks, metropolitan park systems, planned suburban residential enclaves and college campuses were planned and developed in large numbers, climaxing with the City Beautiful movement<sup>[14]</sup> at the turn of the century.

[14] Although the profession itself grew slowly, its early practitioners, including Olmsted, Vaux and Horace Cleveland<sup>[15]</sup>, were among the first to take part in the town planning movement and to awaken interest in civic design. Olmsted also joined other early landscape architects in working on projects in other urban settings, such as at Yosemite Valley and Niagara Falls.

[15] In 1899, the American Society of Landscape Architects was founded by 11 people in New York—most of them associated with Olmsted. The Society continued to represent landscape architects throughout the United States. In 1900, Olmsted's son, Frederick Law Olmsted Jr.<sup>[16]</sup>, organized and taught at Harvard University's first course in landscape architecture.

### Broadening and Diversifying: The 20th Century

[16] Landscape architecture continued to influence the city beautification and planning movement well into the 20th century, as growing cities used the services of professionally-trained landscape architects. The L'Enfant Plan<sup>[17]</sup> for the nation's capitol was revived and expanded by the McMillan Commission of 1901 (Fig. 6). Chicago, Cleveland and other cities also used landscape architects to lay out comprehensive development plans.



Fig. 6 L'Enfant Plan for the nation's capitol by the McMillan Commission(1901)

[17] By the 1920's, urban planning separated from architecture and landscape architecture as a separate profession with its own degree programs and organizations. Yet, landscape architecture continued to remain a major force in urban planning and urban design. During and after the Depression<sup>[18]</sup>, opportunities to design national and state parks, towns, parkways and new urban park systems broadened the profession. The orientation of American landscape architecture returned to its roots in public projects—a trend which has continued throughout the mid-20th century till today.

### **The Profession in Practice**

[18] Landscape architecture in the 1990s cannot be described in a few simple terms. The scope of the profession is too broad and the projects too varied. A variety of often interwoven specializations exist within the profession, including the following: Landscape Design, the historical core of the profession, is concerned with detailed outdoor space design for residential, commercial, industrial, institutional, and public spaces. It involves the treatment of a site as art, the balance of hard and soft surfaces in outdoor and indoor spaces, the selection of construction and plant materials, infrastructure such as irrigation, and the preparation of detailed construction plans and documents.

[19] The scope of professional practice includes:

- Site Planning
- Urban/Town Planning and Urban Design
- Regional Landscape Planning
- Park and Recreation Planning
- Land Development Planning
- Ecological Planning and Design
- Historic Preservation and Reclamation
- Social and Behavioral Aspects of Landscape Design

### **The Profession of the Future**

[20] The years ahead promise new developments and challenges to the ever-broadening profession. With environmental concerns becoming increasingly important, landscape architects are being called upon to bring their expertise to the table to help solve complex problems. Rural concerns are attracting landscape architects to farmland preservation, small town revitalization, landscape preservation, and energy resource development and conservation. Advances in computer technology have opened the field of computerized design, and land reclamation has become a major area of work for members of the profession. Landscape architects have even begun to use their skill within indoor environments (e. g. atriums) and enclosed pedestrian spaces have been incorporated into commercial development projects. From southern California to the Maine coast, the names of landscape architecture firms appear on signs heralding future developments, as more people seek the expertise and services of the profession.

[21] Furthermore, the future also promises to increase cooperation among landscape architects and other design professionals. As interest in the profession continues to grow, students are studying of the profession in increasing numbers, nearly 60 universities and colleges in the United States and Canada now offer accredited baccalaureate and post-graduate programs in landscape architecture. Forty-five