

高等学校中外合作办学适用教材

---

# Advanced Mathematics (I)

## 高等数学 (上册)

潘斌 牛宏 陈丽 主编



化学工业出版社

# 高等学校中外合作办学适用教材

<u>Advanced Mathematics (I)</u>	潘 斌
<u>Advanced Mathematics (II)</u>	潘 斌
<u>A Concise Course to Linear Algebra</u>	刘国庆
<u>Differential and Difference Equations</u>	李艳秋
<u>Introduction to Probability and Statistics</u>	陈建丽
<u>Financial Mathematics</u>	吕学斌

013  
2P12  
1



化学工业出版社 | 教学资源网  
www.cipedu.com.cn  
专业教学服务支持平台

ISBN 978-7-122-34697-1



9 787122 346971 >

定 价：78.00元

Preface

# Advanced Mathematics (I)

## 高等数学 (上册)

潘斌 牛宏 陈丽 主编

We have attempted to give this book the following characteristics.

① The main users of this book are those foreign students studied in China. There are lots of differences in their mathematical ability because there are no standard admission test for... the teaching experience in the past 5 years, in this edition, we begin with pre-tests to assess the necessary mathematical ability.

② The contents of this book are based on the Chinese textbook "Advanced Mathematics (seventh edition)" which is written by department of mathematics of Tongji University. The readers may read this book and use the Chinese textbook "Advanced Mathematics (seventh edition)" as reference. It may help readers to understand the meaning of the English words and the meaning of their English.

③ In order to train the mathematical quality and ability of foreign students, we have added some modern ideas, language and methods of mathematics. We also have added some examples and exercises to help students understand the meaning of the English words and the meaning of their English.

④ We pay more attention to the application of mathematics in physics, chemistry, economics and even daily life.

⑤ Considering the difference in the mathematical ability of foreign students, we have added some difficult sections and exercises in some chapters. We hope that the book can be used as a reference for students with different mathematical ability.

In this volume, Chapter 1 is written by Li Chen, Chapter 2 is written by Li Chen, Chapter 3 is written by Li Chen, Chapter 4 is written by Li Chen, Chapter 5 is written by Li Chen, Chapter 6 is written by Li Chen, Chapter 7 is written by Li Chen, Chapter 8 is written by Li Chen, Chapter 9 is written by Li Chen, Chapter 10 is written by Li Chen, Chapter 11 is written by Li Chen, Chapter 12 is written by Li Chen, Chapter 13 is written by Li Chen, Chapter 14 is written by Li Chen, Chapter 15 is written by Li Chen, Chapter 16 is written by Li Chen, Chapter 17 is written by Li Chen, Chapter 18 is written by Li Chen, Chapter 19 is written by Li Chen, Chapter 20 is written by Li Chen, Chapter 21 is written by Li Chen, Chapter 22 is written by Li Chen, Chapter 23 is written by Li Chen, Chapter 24 is written by Li Chen, Chapter 25 is written by Li Chen, Chapter 26 is written by Li Chen, Chapter 27 is written by Li Chen, Chapter 28 is written by Li Chen, Chapter 29 is written by Li Chen, Chapter 30 is written by Li Chen, Chapter 31 is written by Li Chen, Chapter 32 is written by Li Chen, Chapter 33 is written by Li Chen, Chapter 34 is written by Li Chen, Chapter 35 is written by Li Chen, Chapter 36 is written by Li Chen, Chapter 37 is written by Li Chen, Chapter 38 is written by Li Chen, Chapter 39 is written by Li Chen, Chapter 40 is written by Li Chen, Chapter 41 is written by Li Chen, Chapter 42 is written by Li Chen, Chapter 43 is written by Li Chen, Chapter 44 is written by Li Chen, Chapter 45 is written by Li Chen, Chapter 46 is written by Li Chen, Chapter 47 is written by Li Chen, Chapter 48 is written by Li Chen, Chapter 49 is written by Li Chen, Chapter 50 is written by Li Chen, Chapter 51 is written by Li Chen, Chapter 52 is written by Li Chen, Chapter 53 is written by Li Chen, Chapter 54 is written by Li Chen, Chapter 55 is written by Li Chen, Chapter 56 is written by Li Chen, Chapter 57 is written by Li Chen, Chapter 58 is written by Li Chen, Chapter 59 is written by Li Chen, Chapter 60 is written by Li Chen, Chapter 61 is written by Li Chen, Chapter 62 is written by Li Chen, Chapter 63 is written by Li Chen, Chapter 64 is written by Li Chen, Chapter 65 is written by Li Chen, Chapter 66 is written by Li Chen, Chapter 67 is written by Li Chen, Chapter 68 is written by Li Chen, Chapter 69 is written by Li Chen, Chapter 70 is written by Li Chen, Chapter 71 is written by Li Chen, Chapter 72 is written by Li Chen, Chapter 73 is written by Li Chen, Chapter 74 is written by Li Chen, Chapter 75 is written by Li Chen, Chapter 76 is written by Li Chen, Chapter 77 is written by Li Chen, Chapter 78 is written by Li Chen, Chapter 79 is written by Li Chen, Chapter 80 is written by Li Chen, Chapter 81 is written by Li Chen, Chapter 82 is written by Li Chen, Chapter 83 is written by Li Chen, Chapter 84 is written by Li Chen, Chapter 85 is written by Li Chen, Chapter 86 is written by Li Chen, Chapter 87 is written by Li Chen, Chapter 88 is written by Li Chen, Chapter 89 is written by Li Chen, Chapter 90 is written by Li Chen, Chapter 91 is written by Li Chen, Chapter 92 is written by Li Chen, Chapter 93 is written by Li Chen, Chapter 94 is written by Li Chen, Chapter 95 is written by Li Chen, Chapter 96 is written by Li Chen, Chapter 97 is written by Li Chen, Chapter 98 is written by Li Chen, Chapter 99 is written by Li Chen, Chapter 100 is written by Li Chen.



化学工业出版社  
· 北京 ·

本书是根据教育部非数学专业数学基础课教学指导分委员会制定的工科类本科数学基础课程教学基本要求编写的全英文教材,全书分为上、下两册。本书为上册,主要包括函数与极限,一元函数微积分及其应用和微分方程三部分。本书对基本概念的叙述清晰准确,对基本理论的论述简明易懂,例题习题的选配典型多样,强调基本运算能力的培养及理论的实际应用。本书可作为高等理工院校非数学类专业本科生的教材,也可供其他专业选用和社会读者阅读。

The aim of this book is to meet the requirement of bilingual teaching of advanced mathematics. The selection of the contents is in accordance with the fundamental requirements of teaching issued by the Ministry of Education of China.

Base on the property of our university, we select some examples about petrochemical industry. These examples may help readers to understand the application of advanced mathematics in petrochemical industry.

This book is divided into two volumes. This volume contains functions and limits, calculus of functions of a single variable and differential equation. Basic concepts in this book are clear and accurate. The book introduce the fundamental theories by a method that is easy for understanding.

This book can be used as a textbook for undergraduate students in the science and engineering schools whose majors are not mathematics, and may also be suitable to the readers at the same level.

### 图书在版编目(CIP)数据

高等数学.上册=Advanced Mathematics(I);英文/  
潘斌,牛宏,陈丽主编.—北京:化学工业出版社,2019.9  
高等学校中外合作办学适用教材  
ISBN 978-7-122-34697-1

I. ①高… II. ①潘… ②牛… ③陈… III. ①高等数学-  
高等学校-教材-英文 IV. ①O13

中国版本图书馆 CIP 数据核字(2019)第 119996 号

责任编辑:郝英华  
责任校对:宋 玮

装帧设计:刘丽华

出版发行:化学工业出版社(北京市东城区青年湖南街13号 邮政编码100011)  
印 装:三河市双峰印刷装订有限公司  
787mm×1092mm 1/16 印张18 字数470千字 2019年9月北京第1版第1次印刷

购书咨询:010-64518888 售后服务:010-64518899  
网 址: <http://www.cip.com.cn>  
凡购买本书,如有缺损质量问题,本社销售中心负责调换。

定 价:78.00元

版权所有 违者必究

1.2.2. Captivity of inverse functions and composite functions	55
1.2.3. Continuity of elementary functions	59
<b>Exercises 1-9</b>	59

# Preface

English is the most important language in international academia. In order to strengthen academic exchange with western countries, many universities in China pay more and more attention to the bilingual teaching in classrooms in recent years. Considering the importance of advanced mathematics and scarcity of bilingual mathematics textbook, we have written this book.

The main subject of this book is calculus. Besides, it also includes differential equation, space analytic geometry, vector algebra and infinite series. This book is divided into two volumes. The first volume contains calculus of functions of a single variable and differential equation. The second volume contains space analytic geometry and vector algebra, calculus of multivariate function, curve integral and surface integral, infinite series.

We have attempted to give this book the following characteristics.

① The main users of this book are those foreign students studied in China. There are lots of differences in their mathematical ability because there are no standard admission test for enrolling foreign students. Through the teaching experience in the past 5 years, in this edition, we begin with pre-tests to assess the necessary mathematical ability.

② The contents of this book are based on the Chinese textbook "Advanced Mathematics (seventh edition)" which is written by department of mathematics of Tongji University. The readers may read this book and use the Chinese textbook "Advanced Mathematics" as a reference. It may help readers to understand the mathematical contents and to improve the level of their English.

③ In order to train the mathematical quality and ability of the students, we use some modern ideas, language and methods of mathematics. We also bring in some mathematical and logical symbol.

④ We pay more attention to the application of mathematics in practical problems. We have added some additional examples and exercises in physics, chemistry, economics and even daily life.

⑤ Considering the different teaching requirements in different university, we mark some difficult sections and exercises by the symbol "\*". Teachers and students may choose suitable contents as required.

In this volume, Chapter 1 to Chapter 3 are written by Bin Pan, Chapter 4 is written by Jinqiu Li, Chapter 5 is written by Jingxian Yu, Chapter 6 is written by Hong Niu, Chapter 7 is written by Li Chen. All the chapters are checked and revised by Bin Pan.

We hope this book can bring readers some help in the studying and teaching of bilingual mathematics. Due to the limit of our ability, it is impossible to avoid some unclear explanations. We would appreciate any constructive criticisms and corrections from readers.

**Authors**

**2019-5**

# Contents

Preface

<b>Chapter 1</b>	<b>Functions and limits</b>	1
<b>1.1</b>	<b>Mappings and functions</b>	1
1.1.1	Sets	1
1.1.2	Mappings	4
1.1.3	Functions	5
	<b>Exercises 1-1</b>	19
<b>1.2</b>	<b>Limits of sequences</b>	23
1.2.1	Concept of limits of sequences	23
1.2.2	Properties of convergent sequences	27
	<b>Exercises 1-2</b>	29
<b>1.3</b>	<b>Limits of functions</b>	30
1.3.1	Definitions of limits of functions	30
1.3.2	The properties of functional limits	33
	<b>Exercises 1-3</b>	34
<b>1.4</b>	<b>Infinitesimal and infinity quantity</b>	36
1.4.1	Infinitesimal quantity	36
1.4.2	Infinity quantity	36
	<b>Exercises 1-4</b>	38
<b>1.5</b>	<b>Rules of limit operations</b>	38
	<b>Exercises 1-5</b>	43
<b>1.6</b>	<b>Principle of limit existence—two important limits</b>	44
	<b>Exercises 1-6</b>	49
<b>1.7</b>	<b>Comparing with two infinitesimals</b>	50
	<b>Exercises 1-7</b>	52
<b>1.8</b>	<b>Continuity of functions and discontinuous points</b>	52
1.8.1	Continuity of functions	52
1.8.2	Discontinuous points of functions	54
	<b>Exercises 1-8</b>	56
<b>1.9</b>	<b>Operations on continuous functions and the continuity of elementary functions</b>	57
1.9.1	Continuity of the sum, difference, product and quotient of continuous functions	57

1.9.2	Continuity of inverse functions and composite functions	58
1.9.3	Continuity of elementary functions	59
	<b>Exercises 1-9</b>	59
	<b>1.10 Properties of continuous functions on a closed interval</b>	60
1.10.1	Boundedness and maximum-minimum theorem	60
1.10.2	Zero point theorem and intermediate value theorem	61
1.10.3	Uniform continuity	62
	<b>Exercises 1-10</b>	63
	<b>Exercises 1</b>	63
<b>Chapter 2 Derivatives and differential</b>		66
	<b>2.1 Concept of derivatives</b>	66
2.1.1	Examples	66
2.1.2	Definition of derivatives	70
2.1.3	Geometric interpretation of derivative	77
2.1.4	Relationship between derivability and continuity	78
	<b>Exercises 2-1</b>	79
	<b>2.2 Fundamental derivation rules</b>	81
2.2.1	Derivation rules for sum, difference, product and quotient of functions	81
2.2.2	The rules of derivative of inverse functions	83
2.2.3	The rules of derivative of composite functions (The Chain Rule)	85
2.2.4	Basic derivation rules and derivative formulas	89
	<b>Exercises 2-2</b>	91
	<b>2.3 Higher-order derivatives</b>	93
	<b>Exercises 2-3</b>	95
	<b>2.4 Derivation of implicit functions and functions defined by parametric equations</b>	97
2.4.1	Derivation of implicit functions	97
2.4.2	Derivation of a function defined by parametric equations	101
2.4.3	Related rates of change	103
	<b>Exercises 2-4</b>	103
	<b>2.5 The Differentials of functions</b>	105
2.5.1	Concept of the differential	105
2.5.2	Geometric meaning of the differential	107
2.5.3	Formulas and rules on differentials	108
2.5.4	Application of the differential in approximate computation	109
	<b>Exercises 2-5</b>	110
	<b>Exercises 2</b>	111

<b>Chapter 3</b>	Mean value theorems in differential calculus and applications of derivatives	113
<b>3.1</b>	<b>Mean value theorems in differential calculus</b>	113
	<b>Exercises 3-1</b>	120
<b>3.2</b>	<b>L'Hospital's rules</b>	121
	<b>Exercises 3-2</b>	125
<b>3.3</b>	<b>Taylor formula</b>	126
	<b>Exercises 3-3</b>	130
<b>3.4</b>	<b>Monotonicity of functions and convexity of curves</b>	131
	3.4.1 Monotonicity of functions	131
	3.4.2 Convexity of curves and inflection points	132
	<b>Exercises 3-4</b>	136
<b>3.5</b>	<b>Extreme values of functions, maximum and minimum</b>	137
	3.5.1 Extreme values of functions	137
	3.5.2 Maximum and minimum of function	140
	<b>Exercises 3-5</b>	143
<b>3.6</b>	<b>Differentiation of arc and curvature</b>	145
	3.6.1 Differentiation of an arc	145
	3.6.2 curvature	146
	<b>Exercises 3-6</b>	149
	<b>Exercises 3</b>	149
<b>Chapter 4</b>	<b>Indefinite integral</b>	151
<b>4.1</b>	<b>Concept and property of indefinite integral</b>	151
	4.1.1 Concept of antiderivative and indefinite integral	151
	4.1.2 Table of fundamental indefinite integrals	153
	4.1.3 Properties of the indefinite integral	155
	<b>Exercises 4-1</b>	157
<b>4.2</b>	<b>Integration by substitutions</b>	158
	4.2.1 Integration by substitution of the first kind	158
	4.2.2 Integration by substitution of the second kind	163
	<b>Exercises 4-2</b>	167
<b>4.3</b>	<b>Integration by parts</b>	169
	<b>Exercises 4-3</b>	173
<b>4.4</b>	<b>Integration of rational function</b>	173
	4.4.1 Integration of rational function	173
	4.4.2 Integration which can be transformed into the integration of rational function	175

<b>Exercises 4-4</b> .....	177
<b>Exercises 4</b> .....	178
<b>Chapter 5</b> Definite integrals .....	180
<b>5.1 Concept and properties of definite integrals</b> .....	180
5.1.1 Examples of definite integral problems .....	180
5.1.2 The definition of definite integral .....	182
5.1.3 Properties of definite integrals .....	184
<b>Exercises 5-1</b> .....	186
<b>5.2 Fundamental formula of calculus</b> .....	188
5.2.1 The relationship between the displacement and the velocity .....	188
5.2.2 A function of upper limit of integral .....	188
5.2.3 Newton-Leibniz formula .....	189
<b>Exercises 5-2</b> .....	192
<b>5.3 Integration by substitution and parts for definite integrals</b> .....	194
5.3.1 Integration by substitution for definite integrals .....	194
5.3.2 Integration by parts for definite integral .....	198
<b>Exercises 5-3</b> .....	199
<b>5.4 Improper integrals</b> .....	201
5.4.1 Improper integrals on an infinite interval .....	201
5.4.2 Improper integrals of unbounded functions .....	203
<b>Exercises 5-4</b> .....	205
<b>5.5 Tests for convergence of improper integrals <math>\Gamma</math>-function</b> .....	206
5.5.1 Test for convergence of infinite integral .....	206
5.5.2 Test for convergence of improper integrals of unbounded functions .....	209
5.5.3 $\Gamma$ -function .....	209
<b>Exercises 5-5</b> .....	211
<b>Exercises 5</b> .....	212
<b>Chapter 6</b> Applications of definite integrals .....	214
<b>6.1 Method of elements for definite integrals</b> .....	214
<b>6.2 The applications of the definite integral in geometry</b> .....	215
6.2.1 Areas of plane figures .....	215
6.2.2 The volumes of solid .....	219
6.2.3 Length of plane curves .....	222
<b>Exercises 6-2</b> .....	224
<b>6.3 The applications of the definite integral in physics</b> .....	227
6.3.1 Work done by variable force .....	227

6.3.2 Force by a liquid .....	228
6.3.3 Gravity .....	229
<b>Exercises 6-3</b> .....	230
<b>Exercises 6</b> .....	230
<b>Chapter 7 Differential equations</b> .....	232
<b>7.1 Differential equations and their solutions</b> .....	232
<b>Exercises 7-1</b> .....	236
<b>7.2 Separable equations</b> .....	237
<b>Exercises 7-2</b> .....	240
<b>7.3 Homogeneous equations</b> .....	241
7.3.1 Homogeneous equations .....	241
7.3.2 Reduction to homogeneous equation .....	243
<b>Exercises 7-3</b> .....	245
<b>7.4 A first-order linear differential equations</b> .....	245
7.4.1 Linear equations .....	245
7.4.2 Bernoulli's equation .....	248
<b>Exercises 7-4</b> .....	249
<b>7.5 Reducible second-order equations</b> .....	250
<b>Exercises 7-5</b> .....	254
<b>7.6 Second-order linear equations</b> .....	254
7.6.1 Construction of solutions of second-order linear equation .....	254
7.6.2 The method of variation of parameters .....	257
<b>Exercises 7-6</b> .....	259
<b>7.7 Homogeneous linear differential equation with constant coefficients</b> .....	259
<b>Exercises 7-7</b> .....	263
<b>7.8 Nonhomogeneous linear differential equation with constant coefficients</b> .....	264
<b>Exercises 7-8</b> .....	270
<b>7.9 Euler's differential equation</b> .....	270
<b>Exercises 7-9</b> .....	271
<b>Exercises 7</b> .....	271
<b>Appendix</b> .....	273
<b>References</b> .....	280

# Chapter 1

## Functions and limits

Basically, the object of research in elementary mathematics is a constant quantity, but in advanced mathematics is a variable. In this chapter, we will introduce three fundamental concepts, which are functions, limits and continuity, and some of their properties.

### 1.1 Mappings and functions

#### 1.1.1 Sets

##### 1.1.1.1 Concepts of sets

Set is an important concept and has been learned in high school. A set is defined as the collection of all objects having some specified property. Sets are usually denoted by capital letters  $A, B, \dots$ . Each of the objects belonging to a set is called an **element** of the set, usually denoted by small letters  $a, b, \dots$ . The relation  $a \in A$  means that  $a$  is an element of the set  $A$ , read as “ $a$  belongs to the set  $A$ ”; the relation  $a \notin A$  means that  $a$  is not an element of the set  $A$ , read as “ $a$  does not belong to the set  $A$ ”. A set consisting of finite number of elements is called a **finite set**. A set containing no element is called **the empty set**, denoted by  $\emptyset$ . A set which is neither a finite set nor the empty set is called **an infinite set**. For instance, the set consisting of all natural numbers  $0, 1, 2, \dots$  is an infinite set and is called **the set of natural numbers**, denoted by  $\mathbb{N}$ . Similarly, **the integer set** consists of all integers and is denoted by  $\mathbb{Z}$ ; **the set of rational numbers** consists of all rational numbers and is denoted by  $\mathbb{Q}$ ; **the set of real numbers** consists of all real numbers and is denoted by  $\mathbb{R}$ . The main objects of research about sets are infinite sets.

It is worthwhile to notice that the concept of set is very extensive. The elements of a set may be numbers but may also be many other things. For instance, if we assign a serial number to each student in a university, then the collection of all students in the university can be regarded as a set with the students as elements. To study the shortest route between two

points we may construct a set which contains all possible curves connecting these two points, and then each curve is an element of the set.

There are two ways of representing sets. One is the method of citation, that is, to list all the elements of the set. For instance, the set consisting of all solutions of the equation  $x^2 - 1 = 0$  may be expressed by  $S = \{-1, 1\}$ . Another method is to point out the determining property held in common by all the elements of a set, that is,

$$X = \{x \mid x \text{ has some property } p(x)\}.$$

For instance, the set of solutions of the equation  $x^2 - 1 = 0$ , can also be represented by  $S = \{x \mid x^2 - 1 = 0\}$ .

Suppose that  $A$  and  $B$  are two sets. If each element of the set  $A$  is also an element of the set  $B$ , then  $A$  is called a subset of the set  $B$ , denoted by  $A \subseteq B$  (or  $B \supseteq A$ ), read as “ $A$  is contained by  $B$  (or  $B$  contains  $A$ )”; if  $A \subseteq B$  and  $B \subseteq A$ , then  $A$  and  $B$  are called equal, denoted by  $A = B$ ; if  $A \subseteq B$  but  $A \neq B$ , then, is called a proper subset of  $B$ , denoted by  $A \subsetneq B$ .

### 1.1.1.2 Operations on sets

There are three basic operations on sets, as follows.

Suppose that  $A$  and  $B$  are two sets.

The **union** of  $A$  and  $B$  is the set whose elements are those which belong to at least one of the two sets  $A$  and  $B$ . The union is denoted by  $A \cup B$ , namely

$$A \cup B = \{x \mid x \in A \text{ or } x \in B\}.$$

The **intersection** of  $A$  and  $B$  is the set whose elements are those which belong to both  $A$  and  $B$ . The intersection is denoted by  $A \cap B$ , namely

$$A \cap B = \{x \mid x \in A \text{ and } x \in B\}.$$

It is important to note that an element of  $A \cup B$  may belong to both  $A$  and  $B$ .

The **difference** of  $A$  and  $B$  is the set whose elements are those which belong to  $A$  but not to  $B$ . The difference is denoted by  $A \setminus B$ , namely

$$A \setminus B = \{x \mid x \in A, x \notin B\}.$$

If  $B \subseteq A$ , then the difference  $A \setminus B$  is called **the complement of  $B$  with respect to  $A$** , denoted by  $\complement_A B$ .

If the sets which we are discussing are all the subsets of a set  $X$  (called the **universal set**), then  $X \setminus B$  is called **the complement of  $B$** , denoted by  $\complement_B$  or  $B^C$ .

For instance, the complement of  $A = \{x \mid 0 < x \leq 1\}$  is  $A^C = \{x \mid x \leq 0 \text{ or } x > 1\}$  in the set of real numbers  $\mathbb{R}$ .

The union and the intersection of sets may be extended to any finite number of sets.

If  $A \cap B = \emptyset$ , then  $A$  and  $B$  are said to be disjoint.

It is easily seen from the geometric meaning that operations on sets satisfy the following rules. The analytic proof of rule 1 is omitted.

**Rule 1** Let  $A, B, C$  be any three sets, then

(1) **commutative law**  $A \cup B = B \cup A; A \cap B = B \cap A;$

(2) **associative law**  $(A \cup B) \cup C = A \cup (B \cup C); (A \cap B) \cap C = A \cap (B \cap C);$

(3) **distributive law**  $(A \cup B) \cap C = (A \cap C) \cup (B \cap C);$

$$(A \cap B) \cup C = (A \cup C) \cap (B \cup C);$$

$$(A \setminus B) \cap C = (A \cap C) \setminus (B \cap C);$$

(4) **idempotent law**  $A \cup A = A, A \cap A = A;$

(5) **absorption law**  $A \cup \emptyset = A, A \cap \emptyset = \emptyset, ;$  If  $A \subseteq B$ , then  $A \cup B = B, A \cap B = A.$

**Rule 2 (Dualization law)** If  $A, B$  are two subsets of the universal set  $X$ , then

$$(A \cup B)^c = A^c \cap B^c, (A \cap B)^c = A^c \cup B^c.$$

**Proof** We prove only  $(A \cup B)^c = A^c \cap B^c.$  Since

$$\begin{aligned} x \in (A \cup B)^c &\Rightarrow x \notin A \cup B \Rightarrow x \notin A \text{ and } x \notin B \Rightarrow x \in A^c \text{ and } x \in B^c \\ &\Rightarrow x \in A^c \cap B^c, (A \cup B)^c \subset A^c \cap B^c. \end{aligned}$$

$$\begin{aligned} \text{Since } x \in A^c \cap B^c &\Rightarrow x \in A^c \text{ and } x \in B^c \Rightarrow x \notin A \text{ and } x \notin B \Rightarrow x \notin A \cup B \\ &\Rightarrow x \in (A \cup B)^c, A^c \cap B^c \subset (A \cup B)^c. \end{aligned}$$

Therefore,  $(A \cup B)^c = A^c \cap B^c.$

In many problems we also encounter the product of sets. Suppose that sets  $A, B$  are both nonempty, then the set consisting of all the ordered pairs  $(x, y)$ , where  $x$  and  $y$  are any elements of  $A$  and  $B$  respectively, is called the **product** (or **Descartes**) of the sets  $A$  and  $B$ , denoted by  $A \times B$ , namely,

$$A \times B = \{(x, y) | x \in A, y \in B\}.$$

For example, let  $A = \{x | a \leq x \leq b\}, B = \{y | c \leq y \leq d\}$ , then

$$A \times B = \{(x, y) | a \leq x \leq b, c \leq y \leq d\}.$$

is the set consisting of all points of the rectangle in the  $xOy$  plane and its four vertices are respectively  $(a, c), (b, c), (b, d), (a, d).$

The set  $\mathbb{R} \times \mathbb{R} = \{(x, y) | x, y \in \mathbb{R}\}$  is the whole  $xOy$  plane, denoted by  $\mathbb{R}^2.$

### 1.1.1.3 Intervals and neighborhoods

Intervals are a class of important number sets. Let  $a$  and  $b$  are real numbers,  $a < b.$  The number set

$$\{x | a < x < b\}$$

is said to be an **open interval**, denoted by  $(a, b),$  that is

$$(a, b) = \{x | a < x < b\}$$

$a$  and  $b$  are called the **end points** of the open interval  $(a, b),$  here,  $a \notin (a, b), b \notin (a, b).$  The number set

$$\{x | a \leq x \leq b\}$$

is said to be an **closed interval**, denoted by  $[a, b],$  that is

$$[a, b] = \{x | a \leq x \leq b\}$$

$a$  and  $b$  are also called the **end points** of the closed interval  $[a, b],$  here,  $a \in [a, b], b \in [a, b].$

Concept of neighborhoods is useful and widely used. Any open interval with center  $a$  is said to be a neighborhood of point  $a,$  denoted by  $U(a).$

Let  $\delta$  be any positive number, then the open interval  $(a - \delta, a + \delta)$  is a neighborhood of point  $a,$  which is called  $\delta$ -neighborhood of point  $a,$  denoted by  $U(a, \delta).$  That is

$$U(a, \delta) = \{x | a - \delta < x < a + \delta\}.$$

Point  $a$  is the center of the neighborhood,  $\delta$  is called the radius of the neighborhood (Fig. 1-1)

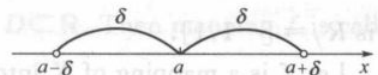


Fig. 1-1

Some time, we need to delete the center of a neighborhood, which is said a deleted neighborhood, denoted by

$$U(a, \delta) = \{x \mid 0 < |x - a| < \delta\},$$

where  $0 < |x - a|$  represent  $x \neq a$ .

It is convenient, the open interval  $(a - \delta, a)$  is called the left  $\delta$ -neighborhood of point  $a$ , the open interval  $(a, a + \delta)$  is called the right  $\delta$ -neighborhood of point  $a$ .

## 1. 1. 2 Mappings

### 1. 1. 2. 1 Concepts of mappings

**Definition 1 (mapping)** Let  $X$  and  $Y$  be two nonempty sets. If for every  $x \in X$ , there is a unique  $y \in Y$  corresponding to  $x$  according to some determined rule  $f$ , then  $f$  is called a mapping of  $X$  into  $Y$ , denoted by

$$f: X \rightarrow Y \text{ or } f: x \mapsto y = f(x), x \in X.$$

Here,  $y$  is called the **image** of  $x$  under the mapping  $f$ , and  $x$  is called the **inverse image** of  $y$  under the mapping  $f$ . The set  $X$  is called the **domain of definition** of the mapping  $f$ , denoted by  $D_f$ . The set consisting of the image  $y$  of all elements  $x \in X$  is called the **range** of  $f$ , denoted by  $R_f$  or  $f(X)$ . That is

$$R_f = f(X) = \{y \mid y = f(x), x \in X\}.$$

A mapping is also called an **operator**. If  $X = Y$ , namely, if the mapping  $f$  maps a set  $A$  into itself, then  $f$  is called a **transformation** on the set  $X$ . If a mapping  $f$  maps every element of the set  $X$  into itself, then  $f$  is called the identity mapping or unit mapping, denoted by  $I_X$  or  $I$ , that is  $Ix = x, \forall x \in X$ .

**Note** There are three essential factors in the definition of a mapping, namely the domain of definition  $D_f = X$ , the range of function  $R_f \subset Y$  and the corresponding rule  $f$ . The domain of definition describes the region of existence of the mapping, and the corresponding rule  $f$  gives the method for determining the corresponding elements of the set  $Y$  from the elements of the set  $X$ , a specific expression of the mapping. For every element  $x \in X$ , the image of  $x$  is unique; for every  $y \in R_f$ , the inverse image of  $y$  is not unique.

**【Example 1】** let  $f: \mathbb{R} \rightarrow \mathbb{R}$ , if definition  $f(x) = x^2, \forall x \in \mathbb{R}$  then  $f$  is a mapping. The domain of definition of  $f$  is  $D_f = \mathbb{R}$  and the range of  $f$  is  $R_f = \{y \mid y \geq 0\} \subset \mathbb{R}$ .

For  $y \in R_f (y \neq 0)$ , the inverse image of  $y$  is not unique. For instance, the inverse image of  $y = 4$  are  $x = 2$  and  $x = -2$ .

**【Example 2】** Let  $X = \{(x, y) \mid x^2 + y^2 = 1\}, Y = \{(x, 0) \mid |x| \leq 1\}$ . If  $f: X \rightarrow Y$  for every element  $(x, y) \in X$ , definition  $(x, 0) \in Y$ , then  $f$  is a mapping. The domain of definition of  $f$  is  $D_f = X$  and the range of  $f$  is  $R_f = Y$ . In geometry, the given mapping  $f$  maps the point on the unit-circle with the center  $O$  into the interval  $[-1, 1]$  on  $x$ -axis.

**【Example 3】** Let  $f: \left[-\frac{\pi}{2}, \frac{\pi}{2}\right] \rightarrow [1, 1]$ , for every element  $x \in \left[-\frac{\pi}{2}, \frac{\pi}{2}\right]$ , definite  $f(x) = \sin x$  then  $f$  is a mapping. The domain of definition of  $f$  is  $D_f = \left[-\frac{\pi}{2}, \frac{\pi}{2}\right]$  and the range of  $f$  is  $R_f = [-1, 1]$ .

Let  $f$  is a mapping of  $X$  into  $Y$ , denoted by  $f: X \rightarrow Y$ . If  $R_f = Y$ , namely, every element  $y$  in  $Y$  has a corresponding element  $x$  in  $X$  such that  $y = f(x)$ , then  $f$  is said to be

a. mapping from  $X$  onto  $Y$ .  $f$  is said to be a one-to-one mapping if whenever  $f(x_1) = f(x_2)$  for  $x_1, x_2$  in  $X$ , one has  $x_1 = x_2$ . Equivalently,  $f$  is a one-to-one mapping if whenever  $x_1 \neq x_2$ , one has  $f(x_1) \neq f(x_2)$ .

According to the definition, the mapping of Example 1 is only a mapping but does not one-to-one and onto mapping. The mapping of Example 2 is a one-to-one mapping but does not onto mapping. The mapping of Example 3 is also one-to-one and onto mapping, therefore it is a bijective mapping.

### 1.1.2.2 Inverse mappings and composite mappings

**Definition 2 (one-to-one mapping)** Suppose that  $f: X \rightarrow Y$  is a mapping, so  $\forall x \in X$ ,  $\exists 1y \in Y$  corresponds to  $x \in X$  and  $y = f(x)$ . If  $\forall y \in Y$ ,  $\exists 1x \in X$  corresponds to  $y \in Y$  as well and satisfies  $f(x) = y$ , then  $f$  is called an one to one mapping from  $X$  to  $Y$ , and the sets  $X$  and  $Y$  are said to be in one to one correspondence.

**Definition 3 (inverse mapping)** Suppose that  $f: X \rightarrow Y$  is an one-to-one mapping,  $\forall y \in R_f$ ,  $\exists 1x \in X$  such that  $f(x) = y$ . Then we can define a mapping  $g: R_f \rightarrow X$  which maps each  $y \in R_f$  to  $x \in X$ , that is  $g(y) = x$  and  $f(x) = y$ . The mapping  $g$  is called the **inverse mapping** of the mapping  $f$ , denoted by  $g = f^{-1}$ . The domain is  $D_{f^{-1}} = R_f$  and the range is  $R_{f^{-1}} = X$ . And  $f$  is said to be **invertible mapping**.

**Definition 4 (composite mappings)** Let  $g: X \rightarrow Y_1$  and  $f: Y_2 \rightarrow Z$  are mappings, where  $Y_1 \subset Y_2$ . Then for each  $x \in X$ , by the mapping  $g$ , there exists a unique  $y = g(x) \in Y_1$  which corresponds to  $x$ . Again by the mapping  $f$ , there exists a unique  $z = f(y) = f(g(x)) \in Z$ , which corresponds to  $y$ . Thus, for each  $x \in X$ , the corresponding  $z \in Z$  can be determined uniquely by the mappings  $g$  and  $f$ . Hence a new mapping from  $X \rightarrow Z$  is determined. This new mapping is called a composite mapping of  $g$  and  $f$ , denoted by  $f \circ g: X \rightarrow Z$ . That is

$$(f \circ g)(x) = f(g(x)), x \in X$$

It is not difficult to see that for two given mappings  $g$  and  $f$ , they can be composed if and only if the range of one mapping is a subset of the domain of definition of another mapping. For instance, if  $R(g) \subseteq D(f)$ , then the mappings can be composed into  $f \circ g$ .

Note that the composite mapping of  $g$  and  $f$  ( $f \circ g$ ) is different from the composite mapping of  $f$  and  $g$  ( $g \circ f$ ).

**Example 4** Let  $g: \mathbb{R} \rightarrow [-1, 1]$  is a mapping, for each  $x \in \mathbb{R}$ , we definite  $g(x) = \sin x$ .  $f: [-1, 1] \rightarrow [0, 1]$  is also a mapping, for each  $u \in [-1, 1]$ , we definite  $f(u) = \sqrt{1 - u^2}$ . Then the composite mapping of  $g$  and  $f$  ( $f \circ g$ ):  $\mathbb{R} \rightarrow [0, 1]$ , for each  $x \in \mathbb{R}$ , we have

$$(f \circ g)(x) = f[g(x)] = f(\sin x) = \sqrt{1 - \sin^2 x} = |\cos x|.$$

## 1.1.3 Functions

### 1.1.3.1 Concepts of functions

**Definition 5 (function)** If  $f: D \rightarrow \mathbb{R}$  be a mapping and  $D \subset \mathbb{R}$ . Then mapping  $f$  is called a function of definition on set  $D$ , denoted by

$$y = f(x), x \in D,$$

where  $x$  is called the independent variable, and  $y$  is called the dependent variable. The set  $D$  is called **domain** of  $f$ , that is  $D_f = D$ .

In the definition of function, for every  $x \in D$ , there is a unique value  $y \in \mathbb{R}$  corresponding to  $x$  according to some determined rule  $f$ , the value is called functional value of  $f$ , denoted by  $f(x)$ , that is  $y = f(x)$ . The set consists of all functional value of  $f$  is called the range of  $f$ , denoted by  $R_f$  or  $f(D)$ , that is,

$$R_f = f(D) = \{y \mid y = f(x), x \in D\}.$$

According to this definition, the terminology "function" should refer to the corresponding rule  $f$ , but we often use " $y = f(x), x \in D$ " to express the function  $f$  defined in  $D$ .

Hence, a function is a particular kind of mapping whose domain and range are both real number sets. As function is the central concept of calculus, we will go into more detail in explaining it.

**Some notes on functions** Consider a function  $y = g(x), x \in D$ .

Each of these examples describes a rule whereby, given a number ( $r, t, w$ , or  $t$ ), another number ( $A, P, C$ , or  $a$ ) is assigned. In each case we say that the second number is a function of the first number.

**A function**  $f$  is a rule that assigns to each element  $x$  in a set  $D$  exactly one element, called  $f(x)$ , in a set  $E$ .

We usually consider functions for which the sets  $D$  and  $E$  are sets of real numbers. The set  $D$  is called the **domain** of the function. The number  $f(x)$  is the **value of  $f$  at  $x$**  and is read " $f$  of  $x$ ." The **range** of  $f$  is the set of all possible values of  $f(x)$  as  $x$  varies throughout the domain. A symbol that represents an arbitrary number in the domain of a function  $f$  is called an **independent variable**. A symbol that represents a number in the range of  $f$  is called a **dependent variable**. In Example  $A = \pi r^2$ , for instance,  $r$  is the independent variable and  $A$  is the dependent variable.

**(1) Domain** Just like a mapping, the domain is one of the essential factors in the concept of function. It is a set  $D$  such that when the independent variable  $x \in D$ , the dependent variable  $y$  can be determined from the corresponding rule  $f$ .

If the domain of function is an interval  $[a, b]$ , then it is often called the interval of definition.

When we investigate a practical problem and the function has some practical meaning, then the domain sometimes will be determined by this practical meaning. For instance, we consider the law of a freely falling body:  $s = \frac{1}{2}gt^2$ . This is a function of time  $t$ . If we consider only the expression, then the interval of definition is  $(-\infty, +\infty)$ . But for the motion of a free falling body the time runs from  $t = 0$  to  $t = T$  when the body reaches the ground. Therefore, the interval of definition for this motion should be  $[0, T]$ .

If functions do not appear in some practical problems, but is given by a mathematical expression, the domain is usually understood to consist of the numbers for which the mathematical expression is defined. For instance, the domain of function  $y = \sqrt{1-x^2}$  is close interval  $[-1, 1]$ ; the domain of function  $y = \frac{1}{\sqrt{1-x^2}}$  is open interval  $(-1, 1)$ .

**【Example 5】** Find the domain of the function  $y = \sqrt{4-x^2} + \frac{1}{\sqrt{x-1}}$ .

**Solution** For the function  $y = \sqrt{4-x^2} + \frac{1}{\sqrt{x-1}}$  to be meaningful, the square roots of  $4-x^2$  and  $x-1$  must make sense and  $\sqrt{x-1} \neq 0$ . Thus, the domain consists of all numbers  $x$  such that

$$\begin{cases} 4-x^2 \geq 0 \\ x-1 > 0 \end{cases}$$

Equivalently,  $1 < x \leq 2$ . That is, the domain is the interval  $(1, 2]$ .

**(2) Correspondence rule** This is another essential factor in the concept of function. It is the specific manifestation of the relation between  $y$  and  $x$ . To express a function is mainly to express its correspondence rule. There are many methods to express the correspondence rule, the following three are often used.

**Case 1 Method of tabulation** Tabulate the values of the independent variable  $x$  and the dependent variable  $y$ , like a table of trigonometric functions or a table of logarithms. The correspondent rule is shown explicitly by the table.

**Case 2 Method shown by graphs** The relationship between  $y$  and  $x$  is shown by a graph. For instance, the temperature curve recorded by some instruments expresses the relationship between the temperature and time.

**Case 3 Analytic representation** The relation between  $y$  and  $x$  is expressed by an analytic representation. Those functions which we have learned in high school, such as trigonometric functions, inverse trigonometric functions, exponential functions, logarithm functions and power functions are all described by analytic representations. The above five types of functions and constants are called by the joint name basic elementary functions. Functions described by analytic representations are the main forms used in calculus.

When we study a function given by an analytic representation, sketching its graph will often help us to obtain some intuitive information about the function. In the coordinate system, the point set

$$\{(x, y) | y = f(x), x \in D(f)\},$$

often a curve, is called the **graph of the function**  $f$  (see Fig. 1-2).

It should be noted that the analytic representation of a function sometimes consists of several components on different subsets of the domain of the function. A function expressed by this kind of representations is called a **piecewise defined function**.

**【Example 6】** The function  $y = |x| = \begin{cases} x, & x \geq 0 \\ -x, & x < 0 \end{cases}$ . The domain of function is  $D = (-\infty, +\infty)$ , the range of function is  $R_f = [0, +\infty)$ . The function is called **absolute function**. Its graph is shown in Fig. 1-3.

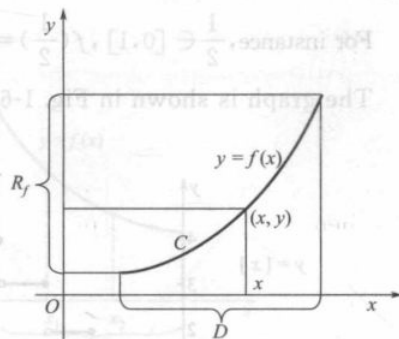


Fig. 1-2