

建筑立场系列丛书 No. 56

从教育角度看幼儿园建筑

Buildings for Kids as Educators



汉英对照
(韩语版第372期)

韩国C3出版公社 | 编
大连理工大学出版社

建筑立场系列丛书 No.00

从教育角度看幼儿园建筑

Buildings for Kids as Educators

汉英对照

(韩语版第372期)

韩国C3出版公社 | 编

史虹涛 时真妹 马莉 栾一斐 张琳娜 陈帅甫 蒋丽 | 译

大连理工大学出版社

C3, Issue 2015.8

All Rights Reserved. Authorized translation from the Korean-English language edition published by C3 Publishing Co., Seoul.

© 2016大连理工大学出版社

著作权合同登记06-2016年第72号

版权所有·侵权必究

图书在版编目(CIP)数据

从教育角度看幼儿园建筑：汉英对照 / 韩国C3出版
公社编；史虹涛等译. — 大连：大连理工大学出版社，
2016.6

(C3建筑立场系列丛书)

书名原文：C3: Buildings for Kids as Educators

ISBN 978-7-5685-0410-2

I. ①从… II. ①韩… ②史… III. ①幼儿园—建筑
设计—汉、英 IV. ①TU244.1

中国版本图书馆CIP数据核字(2016)第135660号

出版发行：大连理工大学出版社

(地址：大连市软件园路80号 邮编：116023)

印刷：上海锦良印刷厂

幅面尺寸：225mm×300mm

印 张：11.75

出版时间：2016年6月第1版

印刷时间：2016年6月第1次印刷

出 版 人：金英伟

统 筹：房 磊

责任编辑：张昕焱

封面设计：王志峰

责任校对：张媛媛

书 号：978-7-5685-0410-2

定 价：228.00元

发 行：0411-84708842

传 真：0411-84701466

E-mail：12282980@qq.com

URL：http://www.dutp.cn



4 小型度假屋

- 004 Longbush生态庇护所迎客小屋_Sarosh Mulla Design
- 008 Tubakuba山脉小墅_OPA Form
- 014 湖滨小筑_FAM Architekti + Feliden+Mawson
- 020 林中小屋_Uhlik Architekti
- 026 隐形住宅_Delugan Meissl Associated Architects
- 030 UFOgel小型住宅_Urлаubs Architektur
- 034 帐篷水疗中心_a21 Studio
- 040 滨海绍森德海边小屋_Pedder&Scampton Architects
- 048 里多克旅馆_Gabriel Rudolph + Alejandro Soffia

54 从教育角度看幼儿园建筑

- 054 从教育角度看幼儿园建筑_Paula Melãneo
- 060 蒙特西奈幼儿园_LBR+A
- 068 里布尼察幼儿园_Arhi-Tura d.o.o
- 076 白水托儿所_Yamazaki Kentaro Design Workshop
- 088 坎普尔顿幼教中心_CO-AP
- 098 “花生”幼儿园_UID Architects
- 108 巴黎日托中心_Rh+ Architecture
- 118 圣吉尔小学_Lens° Ass Architecten

城市住宅

126 后社区时代

- 126 后社区时代_Aldo Vanini
- 132 Artech住宅_Artech Architects
- 144 格罗宁根体育大厦_Architectenbureau Marlies Rohmer
- 152 树之家_Vo Trong Nghia Architects
- 160 布宜诺斯艾利斯大地测量学历史档案馆_SMF Arquitectos
- 168 Luis Anhaia工作室_Zemel+Arquitectos
- 174 拉瓦尔德拉玛尔酒店_VVArquitectura

184 建筑师索引

4

Small Getaways

- 004 Longbush Ecosanctuary Welcome Shelter_Sarosh Mulla Design
- 008 Tubakuba Mountain Hub_OPA Form
- 014 Lake Cabin_FAM Architekti + Feliden+Mawson
- 020 Forest Retreat_Uhlik Architekti
- 026 Invisible House_Delugan Meissl Associated Architects
- 030 UFOgel_Urlands Architektur
- 034 The Tent_a21 Studio
- 040 Southend-on-Sea Beach Huts_Pedder&Scampton Architects
- 048 Ritoque Hostel_Gabriel Rudolphy + Alejandro Soffia

54

Buildings for Kids as Educators

- 054 *Buildings for Kids as Educators*_Paula Melâneo
- 060 Kinder Monte Sinai_LBR+A
- 068 Kindergarten in Ribnica_Arhi-Tura d.o.o
- 076 Hokusui Nursery School_Yamazaki Kentaro Design Workshop
- 088 Camperdown Childcare Center_CO-AP
- 098 Peanuts_UID Architects
- 108 Day Care Center in Paris_Rh+ Architecture
- 118 Sint-Gillis Primary School_Lens° Ass Architecten

Urban How

126

After the Neighborhood's Days

- 126 *After the Neighborhood's Days*_Aldo Vanini
- 132 Artech House_Artech Architects
- 144 Groningen Sports Block_Architectenbureau Marlies Rohmer
- 152 House for Trees_Vo Trong Nghia Architects
- 160 Historical Archive of Geodesia Direction of the Province of Buenos Aires_SMF Arquitectos
- 168 Luis Anhaia Studio_Zemel+Arquitectos
- 174 Raval de la Mar Hotel_VVARquitectura

- 184 Index



建筑立场系列丛书 No.00

从教育角度看幼儿园建筑

Buildings for Kids as Educators

汉英对照

(韩语版第372期)

韩国C3出版公社 | 编

史虹涛 时真妹 马莉 栾一斐 张琳娜 陈帅甫 蒋丽 | 译

大连理工大学出版社



4 小型度假屋

- 004 Longbush生态庇护所迎客小屋_Sarosh Mulla Design
- 008 Tubakuba山脉小墅_OPA Form
- 014 湖滨小筑_FAM Architekti + Feliden+Mawson
- 020 林中小屋_Uhlik Architekti
- 026 隐形住宅_Delugan Meissl Associated Architects
- 030 UFOgel小型住宅_Urлаubs Architektur
- 034 帐篷水疗中心_a21 Studio
- 040 滨海绍森德海边小屋_Pedder&Scampton Architects
- 048 里多克旅馆_Gabriel Rudolph + Alejandro Soffia

54 从教育角度看幼儿园建筑

- 054 从教育角度看幼儿园建筑_Paula Melâneo
- 060 蒙特西奈幼儿园_LBR+A
- 068 里布尼察幼儿园_Arhi-Tura d.o.o
- 076 白水托儿所_Yamazaki Kentaro Design Workshop
- 088 坎普尔顿幼教中心_CO-AP
- 098 “花生”幼儿园_UID Architects
- 108 巴黎日托中心_Rh+ Architecture
- 118 圣吉尔小学_Lens° Ass Architecten

城市住宅

126 后社区时代

- 126 后社区时代_Aldo Vanini
- 132 Artech住宅_Artech Architects
- 144 格罗宁根体育大厦_Architectenbureau Marlies Rohmer
- 152 树之家_Vo Trong Nghia Architects
- 160 布宜诺斯艾利斯大地测量学历史档案馆_SMF Arquitectos
- 168 Luis Anhaia工作室_Zemel+Arquitectos
- 174 拉瓦尔德拉玛尔酒店_VVArquitectura

- 184 建筑师索引

4

Small Getaways

- 004 Longbush Ecosanctuary Welcome Shelter_Sarosh Mulla Design
- 008 Tubakuba Mountain Hub_OPA Form
- 014 Lake Cabin_FAM Architekti + Feliden+Mawson
- 020 Forest Retreat_Uhlik Architekti
- 026 Invisible House_Delugan Meissl Associated Architects
- 030 UFOgel_Urlands Architektur
- 034 The Tent_a21 Studio
- 040 Southend-on-Sea Beach Huts_Pedder&Scampton Architects
- 048 Ritoque Hostel_Gabriel Rudolphy + Alejandro Soffia

54

Buildings for Kids as Educators

- 054 *Buildings for Kids as Educators*_Paula Melâneo
- 060 Kinder Monte Sinai_LBR+A
- 068 Kindergarten in Ribnica_Arhi-Tura d.o.o
- 076 Hokusui Nursery School_Yamazaki Kentaro Design Workshop
- 088 Camperdown Childcare Center_CO-AP
- 098 Peanuts_UID Architects
- 108 Day Care Center in Paris_Rh+ Architecture
- 118 Sint-Gillis Primary School_Lens° Ass Architecten

Urban How

126

After the Neighborhood's Days

- 126 *After the Neighborhood's Days*_Aldo Vanini
- 132 Artech House_Artech Architects
- 144 Groningen Sports Block_Architectenbureau Marlies Rohmer
- 152 House for Trees_Vo Trong Nghia Architects
- 160 Historical Archive of Geodesia Direction of the Province of Buenos Aires_SMF Arquitectos
- 168 Luis Anhaia Studio_Zemel+Arquitectos
- 174 Raval de la Mar Hotel_VVARquitectura

- 184 Index



Longbush生态庇护所迎客小屋_Sarosh Mulla Design

Longbush生态庇护所迎客小屋是一个创新型环境教育空间,其设计、建造和运营都由一群热情洋溢的志愿者在当地企业和慈善机构的支持下完成。所有游客均可免费来访迎客小屋,该项目旨在促进我们对保护区和城市自然环境的积极管理。

该项目是由获奖设计师Sarosh Mulla发起并亲自设计的。Mulla带领一支由88名志愿者组成的队伍完成了空间的建造工作,为来访的学校团体、生态学家和游客提供设施。小屋的结构设计借鉴了风景画派的框架技术,但是采用当代的表现形式,以促进小屋与环境的积极融合。不仅是简单地提供观景之地而已,迎客小屋还通过各种各样的项目,鼓励游客参与生态庇护所的环境复原工作。

建筑采用宽大的钢结构和织物搭成遮棚,为建在山坡上的户外教室遮阳挡雨。遮棚下方的三个木质围合结构和几个小花园共同构建了此处户外教室。这一设计的内涵在于使用自然材料与合成材料,共同作用于生态修复的环境之中。

每个木质围合结构都分别提供了不同的服务,包括教学资料的存储、洗浴设施以及当地生态学家的办公室。办公室通过一条巨大的吊桥向外界敞开,吊桥放下之后可以形成一个水平的平台,用于教学和演示活动。另一个木质围合结构设有平面屋顶,站在屋顶甲板上,山谷美景一览无余。人们可以爬上木梯到达这个屋顶,梯子采用就地采伐的麦卢卡树制成。

生态庇护所的面积大约有120ha,经过15年的不懈努力,生态环境已经得到迅速恢复。通过清除有害动植物和杂草、种植几十万株本地树木等措施,Longbush地区多样化的生态环境焕发出了新的生机。在新西兰的历史上,从未有过由如此庞大而多样化的志愿者和赞助商群

体共同建造的公共建筑。迎客小屋对当地的环境需求做出了积极的响应,为高品质的社群共建建筑打造了一个新的标杆。

Longbush Ecosanctuary Welcome Shelter

The Longbush Ecosanctuary Welcome Shelter is an innovative environmental education space designed, constructed and operated by a group of passionate volunteers, with the support of local businesses and charitable organizations. Access to the Welcome Shelter is free of charge for all visitors and the project aims to promote active stewardship of our natural environment both in conservation areas and in our cities. The project was generated and designed by the award winning designer Sarosh Mulla. Mulla has led a team of 88 volunteers in the construction of the space that provides facilities for visiting school groups, ecologists and tourists. The design of the structure draws on the framing techniques of the Picturesque, but applies these through contemporary forms, which promote active engagement with the environment. Rather than simply viewing the landscape, visitors are encouraged to take part in the environmental restoration occurring at the ecosanctuary through the programs offered





- 1 演示平台
 - 2 吊桥大门
 - 3 生态学家工作坊
 - 4 盥洗室
 - 5 厕所
 - 6 室外教室
 - 7 展示平台
 - 8 教学资料储藏室(上方为瞭望台)
 - 9 圆形露天剧场
 - 10 小组活动草坪
- 1. demonstration platform
 - 2. drawbridge door
 - 3. ecologist's workshop
 - 4. washroom
 - 5. toilet
 - 6. outdoor classroom
 - 7. presentation platform
 - 8. educator's storage (lookout above)
 - 9. amphitheater
 - 10. group work lawn



at the Welcome Shelter.

A large steel and fabric canopy provides shelter from the sun and rain for an outdoor classroom created on the hillside.

Below the roof the form of this classroom is defined by the position of three timber enclosures and small retained gardens. The design plays with the connotations of natural and synthetic materials in the setting of the recovering environment.

Each timber enclosure provides a different service, including the storage of teaching material, ablution facilities and an office for the site ecologist. This office opens up to the exterior with a large drawbridge to create a level platform on teaching and demonstration days. Another enclosure includes a roof deck from which a stunning view of the valley can be appreciated. This deck is accessed via a traditionally made greenwood ladder made of a Manuka tree harvested from the building site.

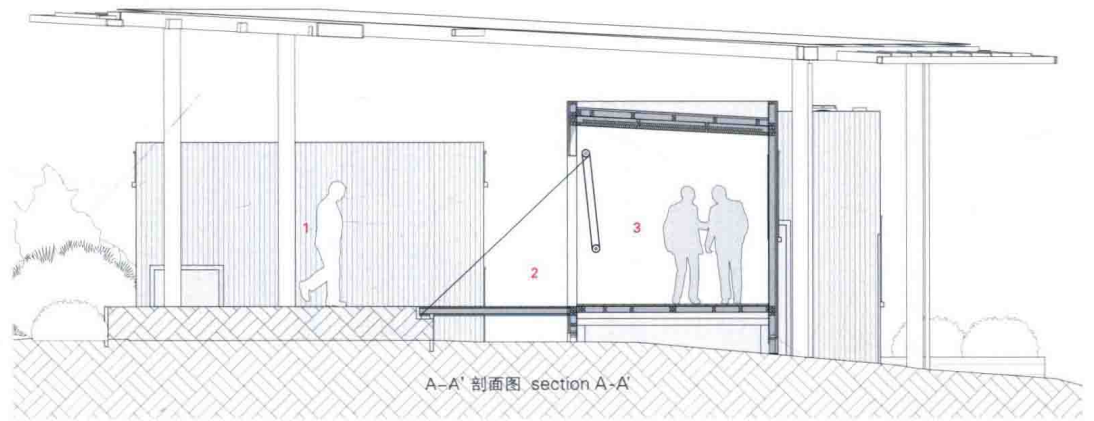
The ecosanctuary is approximately 120 hectares and over the past 15 years has been the rapidly restored through the ef-

forts. With the removal of invasive pests and weeds, alongside the planting of hundreds of thousands of native trees, the diverse ecology at Longbush is beginning to thrive again. Never before in New Zealand history has such a large and diverse group of volunteers and sponsors created a piece of public architecture. The Welcome Shelter creates a new benchmark for high quality community generated architecture that responds to the needs of the local environment.

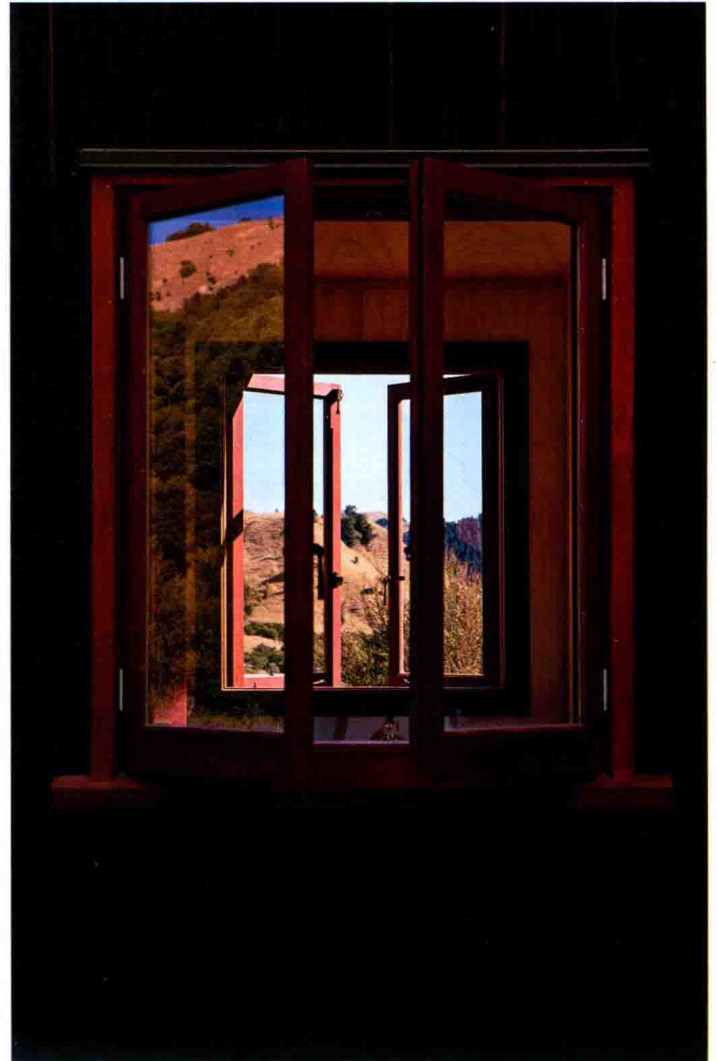
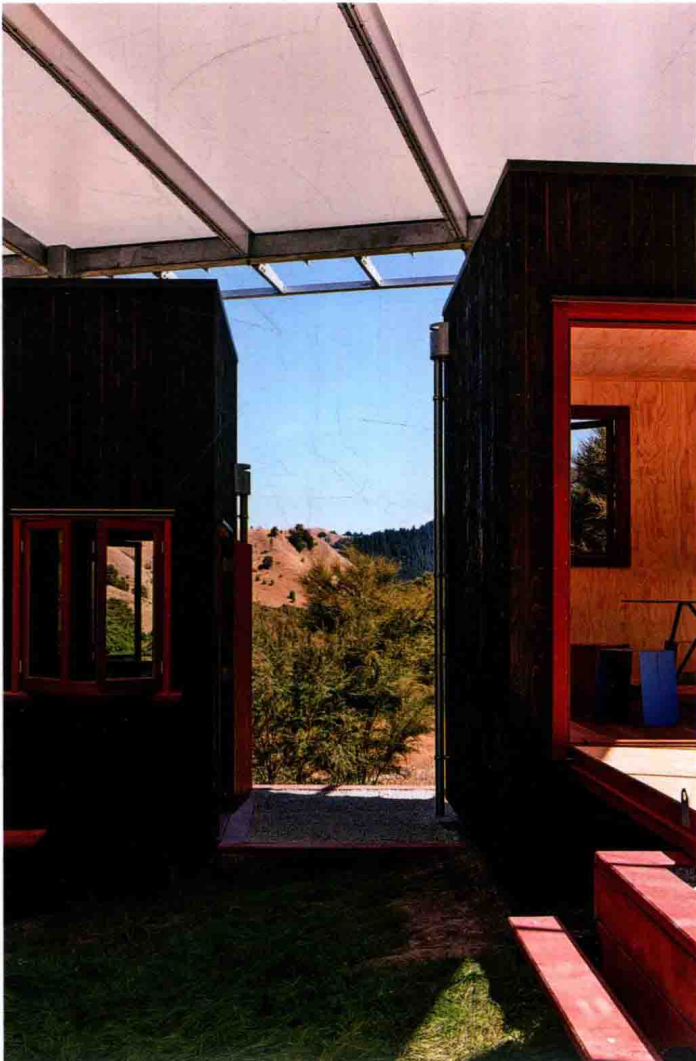
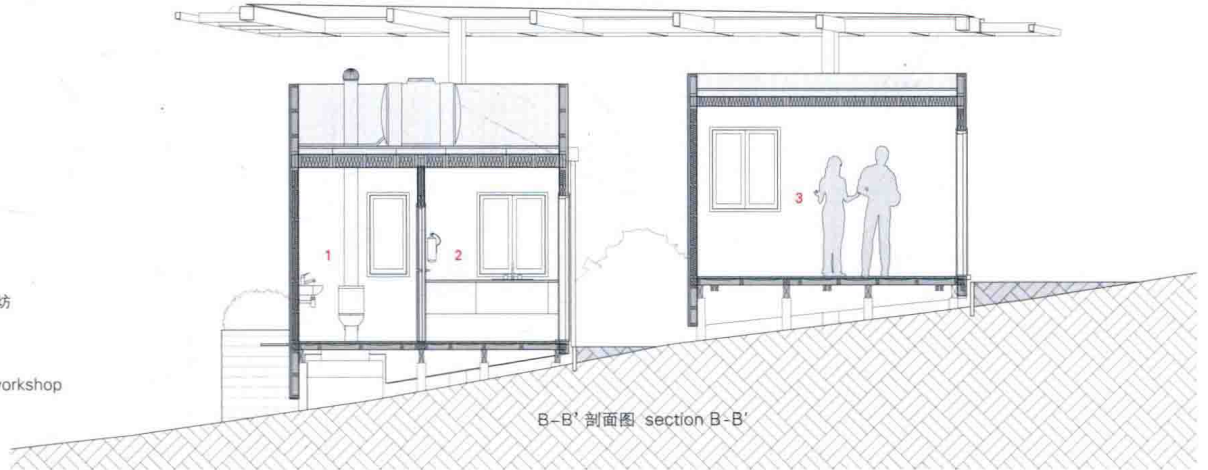
项目名称: Longbush Ecosanctuary Welcome Shelter
 地点: Gisborne, New Zealand
 建筑师: Sarosh Mulla Design
 项目团队: 88 Community volunteers, 88 sponsors
 客户: Longbush Ecological Trust
 建筑面积: 150m²
 尺寸: 12m x 12m x 6m
 施工时间: 2013.10—2014.12
 摄影师: ©Simon Devitt (courtesy of the architect)



- 1 演示平台
2 吊桥大门
3 生态学家工作坊
1. demonstration platform
2. drawbridge door
3. ecologist's workshop



- 1 厕所
2 盥洗室
3 生态学家工作坊
1. toilet
2. washroom
3. ecologist's workshop



Tubakuba山脉小墅_OPA Form





在卑尔根最著名的山脉的森林中，经过一条喇叭形状的隧道，就能进入一个高悬在城市之上、隐秘在树木之后的“木质泡泡”中。在这里，你可以度过一晚只属于你和孩子们的欢乐时光。该项目由OPA建筑事务所的建筑师Espen Folgerø主持，联合卑尔根建筑学院的设计建造工作室共同打造完成。

Tubakuba项目有95%是由木材建造而成的。内墙覆盖胶合板，并采用灵活的挪威西部松木板，外部使用落叶松木烤板。独具特色的隧道由削弯的松木堆叠而成，提供足够的强度；同时南墙上铺设原始落叶松木，其材质会随时间推移而逐渐变成灰色。烤色镀层采用日本传统的烧杉板工艺加工，这种处理方式能够预防木质霉变和腐烂。

本案没有电力支撑，是卑尔根仅有的离网型旅馆房间。项目通过缩小户内空间使热量消耗降至最低。无论是墙壁、地板还是天花板，用于构造与保温的材料都是木材。入口处弯曲的木条是锯木厂成品的副产品，镀层由碳化的（烤制的）二级镀木板制成。墙壁、屋顶和地板内的保温材料是木质纤维——一种吸湿性材料，可以让建筑透气，而不用机械通风。

在城市和野外的边界之处，Tubakuba提供了一间免费的旅馆房间。尤其针对带孩子的家庭，该项目的目的是让每个人都有机会享受户外体验，并给孩子一个在森林中过夜的美好初体验。

Tubakuba是一个带景观的14m²的房间，类型介于帐篷和木屋之间，可以通过“喇叭隧道”进入其中。你可以深切感受到漂浮在城市上空的感觉，特别是当你靠近巨大的落地窗，俯瞰窗外陡峭的山坡以及坡下的市中心的时候。在别墅下的阴凉处，能找到一个不错的野餐位置——喇叭隧道也可以作为避雨、玩乐的好地方。

除了使用灵活之外，Tubakuba还为现代城市添置了一些我们现在可能缺乏的东西：一座都市风格的小木屋。想要到达这里，你既不需要汽车也不用出行到很远的地方，因为它离公共缆车很近，缆车每隔15到30分钟便会从市中心出发，上下Fløyen山一趟。

Tubakuba Mountain Hub

Hovering above the city, hidden behind trees in the forest of Bergen's most famous mountain; through a tuba-tunnel, you can enter a wooden bubble. One night, just for you and your kids. The project is the result of a design-build workshop at Bergen School of Architecture lead by Espen Folgerø at OPA Form.

Tubakuba is constructed of 95 percent wood. The interior is clad in plywood, while flexible wooden boards of the western Norwegian pine and the exterior is clad with burned larch. The characteristic tunnel consists of curved shavings of pine mounted in layers to provide sufficient strength, while the south wall is clad with untreated larch, which will turn gray with time. The burned cladding is made with the traditional Japanese method Shou Sugi Ban. This is a treatment to prevent fungal decay and damage.

With no electricity - the project is the only off-the grid hotel-room in Bergen. The project aims to minimize the need for heating by minimizing the indoor volume. The materials





©Marina Magreoy (courtesy of the architect)

项目名称: Tubakuba Mountain Hub

地点: Bergen, Norway

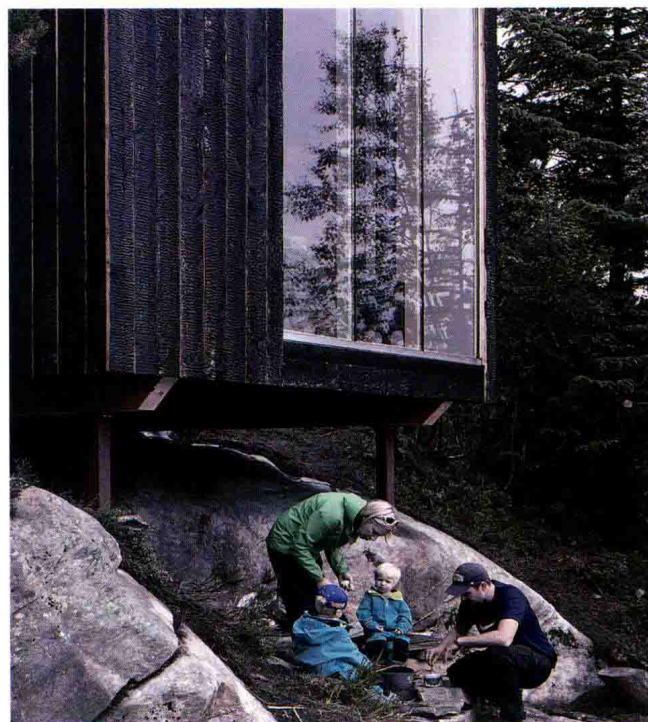
建筑师: OPA Form

项目团队: professor_Espen Folgerø, Håvard Austvoll, Sigurdur Gunnarsson, Hans Christian Elstad / student_Gunnar Sørås, Bent Brørs, Ida Helen Skogstad, Adrian Højfeldt, Eivind Lechbrandt, Alice Guan, Luise Storch, Eline Moe Eidvin, Shepol Barzan, Øyvind Kristiansen, Stein Atle Juvik, Eva Bull, Kristian Bøysen, Sondre Bakken

竣工时间: 2014

摄影师: ©Helge Skodvin (courtesy of the architect)-p.12, p.13

©Gunnar Sørås (courtesy of the architect)-p.10, p.11^{bottom}



©Stine Elise Kristoffersen (courtesy of the architect)



chosen for the construction and insulation is wood all the way through the walls, floor and ceiling. The bent strips of wood in the entrance can be found as shavings from sawmill production and the cladding is made by carbonizing (burning) second grade wooden cladding planks. Inside the walls, roof and floor the insulation consists of wooden fibers—a hygroscopic material that allows for the construction to breathe, excluding the need for mechanical ventilation.

The Tubakuba offers a hotel room that is free of charge on the border between the wild nature and the city. Especially aimed at families with young children, the aim of the project is to make outdoor experiences possible for everybody and give children a positive first meeting with spending the night in a forest.

Tubakuba is a 14 square meter room with a view, somewhere between a tent and a cabin, that you enter through a “tuba tunnel”. The feeling of floating over the city is highly present, especially when you get closer to the large windows facing the steep hill down towards the city center. Sheltered under the cottage you will find a nice picnic area - and the tuba tunnel can function as a shelter for rain, for fun and play.

In addition to being flexible in its use, the Tubakuba adds something to the city that we may lack today: an urban cottage. To use this cottage you neither need a car nor travel very far, because of the proximity to the public tram which climbs up and down Fløyen from the city center every 15-30 minutes.