

英语导游资格考试参考用书

江苏 导游英语

English for Tour Guides in Jiangsu Province

主编◎褚 琴



中国旅游出版社

英语导游资格考试参考用书

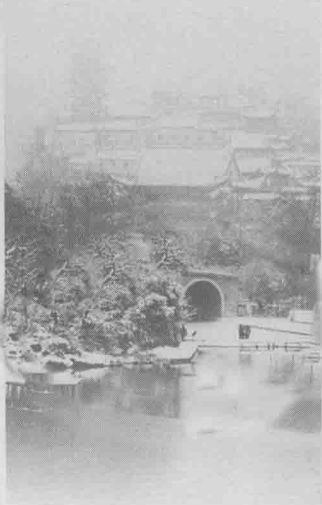
江苏 导游英语

English for Tour Guides in Jiangsu Province

主编：褚琴

副主编：王叶丁 张玲文

主审：邵华 王宗榴



中国旅游出版社

责任编辑：张珊珊

责任印制：冯冬青

封面设计：何杰

图片作者：蒋苏平 郑翔 卞志武 毕晓华 谢松

图书在版编目 (CIP) 数据

江苏导游英语 / 褚琴主编. --北京：中国旅游出版社，2016. 1

ISBN 978 - 7 - 5032 - 5471 - 0

I. ①江… II. ①褚… III. ①导游 - 英语②导游 - 解说词 - 江苏省 IV. ①H31②K928.953

中国版本图书馆 CIP 数据核字 (2015) 第 278364 号

书 名：江苏导游英语

作 者：褚琴

出版发行：中国旅游出版社

(北京建国门内大街甲 9 号 邮编：100005)

http://www.cttp.net.cn E-mail: cttp@cnta.gov.cn

发行部电话：010 - 85166503

排 版：北京旅教文化传播有限公司

经 销：全国各地新华书店

印 刷：河北省三河市灵山红旗印刷厂

版 次：2016 年 1 月第 1 版 2016 年 1 月第 1 次印刷

开 本：787 毫米 × 1092 毫米 1/16

印 张：14

字 数：220 千

定 价：34.00 元

I S B N 978 - 7 - 5032 - 5471 - 0

版权所有 翻印必究

如发现质量问题，请直接与发行部联系调换

序 言

随着旅游业的高速发展及国际交流的日益频繁,旅游行业对英文导游的需求日趋旺盛,对英文导游自身素质的要求也愈来愈高,英文导游资格证考试的方式也在相应地改革和创新。近年来,英文导游证现场考试采用了复述和视频讲解相结合的方式,给广大应试者带来了全新的挑战。为使学生更好地适应英文导游证现场考试,南京旅游职业学院国际旅游系导游英语课程组教师针对本校学生的实际情况,并结合自身多年教学实践经验,以江苏导游资格证现场考试的十一大景区为主要内容(其中含南京六大景区),编写了《江苏导游英语》一书。

相比同类教材,本书主要编写特点如下:一是各单元均严格按照听力导入、情景对话、导游词讲解、实践操练、模拟讲解、延伸阅读的体例安排,力求方便教学的顺利推进及学生学习的循序渐进;二是力求图文并茂,书中每个重要景点均配有实景图片,增强了直观性,提高了可读性;三是注重语言和文化的融合,对每一景区提及的重难点附有中文阐述,大大地拓展了学生的知识面。此外,附录部分还针对江苏本地旅游文化方面作了有针对性的补充,突出了地方旅游文化特色。

参加本书编写的共有七位教师和两位行业专家,其中南京旅游职业学院国际旅游系主任邵华、旅游行业资深英文导游王宗榴和高级英语导游、全国优秀导游、南京市金牌导游顾华对教材内容及文字的审定作了大量的工作。褚琴、王叶丁和张玲文三位教师负责本书体例的制定及附录的审定,具体参与编写的课程组教师有张玲文(中山陵、中华门)、褚琴(夫子庙、瘦西湖)、曹小芹(总统府)、王羽青(南京师范大学英美文学博士)(明孝陵、龟山汉墓)、成慧(灵谷寺、拙政

园)、王叶丁(周庄、灵山大佛)。对于旅行社、景区行业专家的指导,教师们的辛勤工作,本书在此一并表示感谢。今后,我们将继续征询行业专家、任课教师、学生及应试者的多方面意见,不断修订和完善,使本书更好地适应新形势下江苏英文导游服务工作的需要。

编者

2015年11月

于南旅院共和湖畔

目录

CONTENTS

Chapter 1 Dr. Sun Yatsen's Mausoleum	1
Part A: Listening	1
Part B: Situational Dialogues	1
Part C: Introduction to Tourist Sites: Dr. Sun Yatsen's Mausoleum	4
Part D: Exercises	10
Part E: Further Reading	13
Section A: Question and Answer	13
Section B: Nanjing – A City Rich in History & Culture	13
Chapter 2 Nanjing Confucius Temple	18
Part A: Listening	18
Part B: Situational Dialogues	18
Part C: Introduction to Tourist Sites: Nanjing Confucius Temple	22
Part D: Exercises	26
Part E: Further Reading	29
Section A: Question and Answer	29
Section B: Imperial Examination Museum of China	30
Chapter 3 The Presidential Palace (I)	35
Part A: Listening	35
Part B: Situational Dialogues	35

Part C: Introduction to Tourist Sites: Visit along the Central Axis	39
Part D: Exercises	42
Part E: Further Reading	45
Section A: Question and Answer	45
Section B: Celebrities of Jiangsu	45
Chapter 4 The Presidential Palace (II)	50
Part A: Listening	50
Part B: Situational Dialogues	50
Part C: Introduction to Tourist Sites: Visit of Xu Yuan Garden	54
Part D: Exercises	59
Part E: Further Reading	62
Section A: Question and Answer	62
Section B: Nanjing Cloud Pattern Brocade	62
Chapter 5 Xiaoling Tomb of the Ming Dynasty	66
Part A: Listening	66
Part B: Situational Dialogues	66
Part C: Introduction to Tourist Sites: Xiaoling Tomb (Filial Tomb) of the Ming Dynasty	70
Part D: Exercises	74
Part E: Further Reading	77
Section A: Question and Answer	77
Section B: The Imperial Tombs of the Ming Dynasty in Beijing	77
Chapter 6 Zhonghua Gate	81
Part A: Listening	81
Part B: Situational Dialogues	81
Part C: Introduction to Tourist Sites: Zhonghua Gate	84
Part D: Exercises	88

Part E: Further Reading	91
Section A: Question and Answer	91
Section B: Delicious Local Snacks	91
Chapter 7 Linggu Temple	96
Part A: Listening	96
Part B: Situational Dialogues	96
Part C: Introduction to Tourist Sites: Linggu Temple	99
Part D: Exercises	103
Part E: Further Reading	106
Section A: Question and Answer	106
Section B: Chinese Pagodas	107
Chapter 8 Humble Administrator's Garden	110
Part A: Listening	110
Part B: Situational Dialogues	110
Part C: Introduction to Tourist Sites: Humble Administrator's Garden	113
Part D: Exercises	117
Part E: Further Reading	120
Section A: Question and Answer	120
Section B: Su Embroidery	120
Chapter 9 Zhouzhuang	123
Part A: Listening	123
Part B: Situational Dialogues	124
Part C: Introduction to Tourist Sites: Zhouzhuang	127
Part D: Exercises	131
Part E: Further Reading	134
Section A: Question and Answer	134
Section B: Kunqu	135

Chapter 10 Lingshan Grand Buddha	139
Part A: Listening	139
Part B: Situational Dialogues	139
Part C: Introduction to Tourist Sites: Grand Buddha at Lingshan Mountain	143
Part D: Exercises	147
Part E: Further Reading	151
Section A: Question and Answer	151
Section B: Huishan Clay Figurine and Yixing Zisha Teapot	151
Chapter 11 The Slender West Lake	155
Part A: Listening	155
Part B: Situational Dialogues	155
Part C: Introduction to Tourist Sites: The Slender West Lake	159
Part D: Exercises	163
Part E: Further Reading	166
Section A: Question and Answer	166
Section B: Huaiyang Cuisine	166
Chapter 12 Guishan Han Tomb	170
Part A: Listening	170
Part B: Situational Dialogues	170
Part C: Introduction to Tourist Sites: Guishan Han Tomb	173
Part D: Exercises	177
Part E: Further Reading	179
Section A: Question and Answer	179
Section B: The Han Dynasty	180
Appendix	184
Appendix 1: The Memorial Hall of the Victims In Nanjing Massacre By Japanese Invaders	184

Appendix 2: Rain Flower Pebble 187

Appendix 3: Rain Flower Tea 188

Appendix 4: Map of Main Scenic Spots in Nanjing 189

Appendix 5: 英语导游翻译实用词群 190

Appendix 6: 中国特色词汇翻译集锦 199

Appendix 7: 中国经典古文的英语译文 201

Appendix 8: 常见中餐的英文表达 206

Appendix 9: 常见公共标志的英文翻译 209

Appendix 10: 英文谚语精选 210

References 214

Words and Expressions

1. 雨花石 (Rain Flower Pebble) / yǔ huā shí

2. 雨花茶 (Rain Flower Tea) / yǔ huā chá

Chapter 1

Dr. Sun Yatsen's Mausoleum

Part A: Listening >>

Fill in the blanks with what you hear.

In the surrounding areas of Dr. Sun Yatsen's Mausoleum are some commemorative buildings attached to the mausoleum. The Bronze Treasured Tripod, standing to the south of Boai Gateway, was contributed by Dai Jitao, as well as teachers and students of the National Zhongshan University. Made of _____, the tripod stands 4.27 meters high with a diameter of 1.22 meters at the belly, weighing about _____ kilograms. Engraved on the wall of the tripod are the three characters reading "_____, Benevolence and Valiance" as well as the full text of Sutra of Filial Piety written by Madame Huang, mother of Dai Jitao. The tripod was set up here in _____. Music Stand, located on the _____ to the south of the square in front of the mausoleum, covers an area of 4,200 square meters. It was designed by Guan Songsheng and Yang Tingbao and completed in October, 1933.

Part B: Situational Dialogues >>

Words and Expressions

mausoleum

/ ,mɔ:sə'li:əm /

n. 陵墓

abbot

/ 'æbət /

n. (寺庙)住持, 方丈

funeral	/'fju:nərəl /	n.	葬礼
granite	/'grænit /	n.	花岗岩
archway	/'ɑ:tʃwei /	n.	拱门
feudal	/'fju:dl /	adj.	封建的
magnificent	/ mæg'nifisnt /	adj.	壮丽的, 华丽的
lintel	/'lintl /	n.	门楣, 过梁
gingko	/'gɪŋkəu /	n.	银杏
Republic of China			中华民国
geomantic omen			风水
Universal Fraternity			博爱
blue-glazed tile			蓝色琉璃瓦
Sacred Way			神道
in harmony with			与……和谐, 与……一致

Dialogue 1

Pre-reading Questions:

1. When did Dr. Sun Yatsen pass away?
2. Why was he buried in Nanjing?

The tour guide and tourists arrive at the entrance to Dr. Sun Yatsen's Mausoleum and the guide begins his introduction. (G=Guide; T=Tourist)

G: Ladies and gentlemen, attention, please. Here we are at the entrance to Dr. Sun Yatsen's Mausoleum. As its name suggests, it was built in memory of Dr. Sun Yatsen.

T: When did he pass away?

G: On Mar. 12th, 1925 in Beijing.

T: I know he was born in Guangdong Province, and died in Beijing. Why was his mausoleum built in Nanjing?

G: Yes, many visitors felt puzzled. In fact, the mausoleum site was first recommended to Dr. Sun Yatsen by the abbot of Linggu Temple. Later he was so amazed by the place

that he wished he could be buried here after his death. He once again expressed that desire in his sickbed in 1925.

T: Oh, this area is really beautiful, I like it too.

G: Besides, Nanjing is special for him.

T: Why?

G: It was in Nanjing that the Republic of China was established, and it was in Nanjing that his dream came true, so Nanjing is an ideal place for him to stay forever.

T: I see. The environment is wonderful!

G: Yes, it is a good place in terms of Fengshui.

T: What is Fengshui? I've never heard of it.

G: It means geomantic omen in English.

T: Oh, it seems mysterious to me, and I don't know much about it. What do these two characters on the archway mean?

G: They are Dr. Sun Yatsen's handwriting meaning "Universal Fraternity".

T: Excellent! Shall we take a picture in front of the gateway?

G: Sure, go ahead.

G: OK, please follow me, everyone. As we are walking along, I'll talk about the mausoleum in more details. Keep up, please.

Dialogue 2

Pre-reading Questions:

1. How long is the tomb avenue?
2. What are lined on both sides of the tomb avenue?

The tour guide and tourists are walking along the tomb avenue. (G=Guide; T=Tourist)

G: Now in front of us is the tomb avenue.

T: What are these trees?

G: They are pine, ginkgo and maple trees. This road leads to the mausoleum gate tower roofed by blue-glazed tiles.

T: It is unlike the Sacred Way in Xiaoling Tomb of the Ming Dynasty. On both sides of the Sacred Way are lined with giant stone animals. Why are they different?

G: A very good question. As we know, Xiaoling Tomb is the tomb for Emperor Zhu

Yuanzhang, who was the founding emperor of the Ming Dynasty. He was one of those emperors in feudal times, while Dr. Sun Yatsen devoted all his life to overthrowing the feudal system. So in order to show his difference from those feudal emperors, the designers of the mausoleum used plants instead of stone animals or beasts.



- T: No wonder they are different. But these plants are in harmony with surroundings, so they contribute to the whole environment.
- G: Exactly. At the end of the avenue stands the mausoleum gate. That is the first gate to the mausoleum.
- T: Oh, it looks magnificent!
- G: The gate is about 16.5 meters high and 27 meters wide. Four Chinese characters are inscribed on the lintel written by Dr. Sun Yatsen, meaning the world belongs to the public, which fully explains the cause he struggled for during his life.
- T: How to read the four characters in Chinese?
- G: “Tian Xia Wei Gong”.
- T: “Tian Xia Wei Gong”, very interesting.
- G: Walking through it, the first building we will see is the Tablet Pavilion. Let’s go.

Part C: Introduction to Tourist Sites >>

Words and Expressions

forerunner	/ 'fɔ:rlənə(r) /	n.	先驱
democratic	/ demə'krætɪk /	adj.	民主的
physician	/ fi'zɪʃn /	n.	医生
doctrine	/ 'dɒktrɪn /	n.	信条; (宗教的) 教义
theoretical	/ θiə'retɪkəl /	adj.	理论的

corrupt	/ kə'ɹʌpt /	adj.	腐败的
monarchy	/ 'mɒnəki /	n.	君主政体, 君主制
provisional	/ prə'vɪʒənl /	adj.	暂时的, 暂定的, 临时的
resign	/ ri'zain /	v.	辞职; 引退
alliance	/ ə'laiəns /	n.	联盟, 同盟
sponsor	/ 'spɒnsə /	v.	发起; 主办; 倡议
ingeniously	/ in'dʒi:njəsli /	adv.	设计独特地, 灵巧地
memorial	/ mi'mɔ:riəl /	n.	纪念物, 纪念碑
axis	/ 'æksis /	n.	轴线
semilunar	/ semi'lu:nə /	adj.	半月形的
octagonal	/ ɒk'tægənl /	adj.	八边形的, 八角形的
eave	/ i:v /	n.	屋檐
motto	/ 'mɒtəu /	n.	座右铭
epitaph	/ 'epɪtə:f /	n.	墓志铭, 碑文
panorama	/ ,pænə'ra:mə /	n.	全景, 全貌
emblem	/ 'embləm /	n.	象征, 徽章
gown	/ gaun /	n.	长袍, 长外衣
recline	/ ri'klaɪn /	v.	靠在, 斜倚
harmonious	/ hɑ:'məuniəs /	adj.	和谐的; 谐调的
rational	/ 'ræʃənl /	adj.	理性的; 合理的
cypress	/ 'saɪprɪs /	n.	柏树
dignified	/ 'dɪgnɪfaɪd /	adj.	有尊严的, 高贵的
liberty bell			自由钟
Nationalism, Democratic Rights and People's Livelihood			民族、民权、民生
Mausoleum Gate			陵门

Tablet Pavilion

Memorial Hall

Coffin Chamber

Administrative Bureau

Five Power Constitution

architectural complex

sculpted relief

Purple Mountain

Cornell University

碑亭

祭堂

墓室

行政院

五权宪法

建筑群

浮雕

紫金山

康奈尔大学

Dr. Sun Yatsen's Mausoleum

Good morning, everyone. Today we're going to visit Dr. Sun Yatsen's Mausoleum. It is the mausoleum of the great forerunner of Chinese democratic revolution—Dr. Sun Yatsen^①. It is situated at the southern slope of the Purple Mountain. The mausoleum has been regarded as one of "the 40 best tourist attractions in China", and was ratified one of the National 5A Tourist Attractions by China National Tourism Administration.



Dr. Sun Yatsen was also called Sun Wen or Sun Zhongshan. He was born in a poor peasant family in Xiangshan County, Guangdong Province. When he was young, he studied abroad, and graduated in medicine in 1892. Then he worked as a physician. Being a doctor, he couldn't cure the nation, so he turned to politics in 1893. In 1905, China Revolutionary League^②

was founded in Tokyo under his leadership. He put forward the doctrine of the Three People's Principles, namely, Nationalism, Democratic Rights and People's Livelihood, as his political theoretical basis.

After the 1911 Revolution, Chinese people brought down the corrupt rule of the Qing

Dynasty (1644~1911) and ended the feudal monarchy of over 2,000 years. Dr. Sun Yatsen was elected president of the provisional government of the Republic of China. However, he resigned on Apr. 1st, 1912. After that, he launched Movement against Yuan Shikai^③. In Jan. 1924, he put forward the three great policies of “alliance with Russia, cooperation with the Communist Party and assistance to peasants and workers”. Unfortunately, he died of liver cancer at the age of 59.

After his death, a competition was sponsored for design of his mausoleum. A young architect named Lv Yanzhi won the competition and worked as the chief architect and engineer for the project. Lv Yanzhi graduated from Tsinghua University, majoring in architecture. After that, he went to Cornell University to further his study. Because of his educational background, he ingeniously integrated Chinese architectural elements with those of western in his design. It's a pity that he died of liver cancer too before the mausoleum was completed.

The construction of the mausoleum started in 1926. The Grand Funeral^④ was held on June 1st, 1929 while most of the structures were completed.

Dr. Sun Yatsen's Mausoleum is designed in the shape of a liberty bell, intending to remind people never to get contented. The park of mausoleum covers an area of over 133 hectares. The whole architecture, from the Gateway to Mausoleum Gate, Tablet Pavilion, Memorial Hall and Coffin Chamber, lies on the north-south axis. There are 392 steps and 10 platforms in between. The buildings are all built with natural granite and marbles and covered by blue-glazed tile roofs.

First, we come to the square in front of the mausoleum. The square is at the southern end of Dr. Sun Yatsen's Mausoleum, and the semilunar form is the bottom of the bell. To the south of the square, there is an octagonal stone platform. We can see the Bronze Treasured Tripod there.

Now in front of us is an arch gate, 12 meters high, 17.3 meters wide. Two Chinese characters in Dr. Sun's handwriting can be seen, meaning universal fraternity. Therefore, it is also called “Boai Gateway”. The two characters “Boai” originate from an article by Han Yu^⑤, a great literator in the Tang Dynasty.

The tomb avenue, which is lined with pine, ginkgo and maple trees, leads to the mausoleum gate tower. The roof is also covered by blue-glazed tiles. Under the front eave of the tower, we can see Dr. Sun Yatsen's motto “the World Belongs to the Public”. The