

# 明代弘治正德御窑瓷器 下

## 景德镇御窑遗址出土与故宫博物院藏传世瓷器对比

故宫博物院 景德镇市陶瓷考古研究所 编  
故宫出版社

# Imperial Porcelains from the Reign of Hongzhi and Zhengde in the Ming Dynasty

A Comparison of Porcelains from the Imperial Kilo Site at Jingdezhen and  
Imperial Collection of the Palace Museum Vol. II

Compiled by the Palace Museum and the Archaeological Research Institute of Ceramic in Jingdezhen,  
The Forbidden City Publishing House



# 明代弘治正德御窑瓷器 下

景德镇御窑遗址出土与故宫博物院藏传世瓷器对比

---

故宫博物院、景德镇市陶瓷考古研究所 编  
故宫出版社

Imperial Porcelains from the Reign of  
Hongzhi and Zhengde in the Ming Dynasty Vol. II

A Comparison of Porcelains from the Imperial Kiln Site at Jingdezhen and  
Imperial Collection of the Palace Museum

---

Compiled by the Palace Museum and the Archaeological Research Institute of Ceramic in Jingdezhen  
The Forbidden City Publishing House

图书在版编目(CIP)数据

明代弘治正德御窑瓷器：景德镇御窑遗址出土与故宫博物院藏传世瓷器对比 / 故宫博物院，景德镇市陶瓷考古研究所编。—北京：故宫出版社，2017.9

ISBN 978-7-5134-1019-9

I. ①明… II. ①故… ②景… III. ①瓷器(考古)—对比研究—中国—明代 IV. ①K876.34

中国版本图书馆CIP数据核字(2017)第190490号

明代弘治正德御窑瓷器

景德镇御窑遗址出土与故宫博物院藏传世瓷器对比

故宫博物院、景德镇市陶瓷考古研究所 编

出版人：王亚民

责任编辑：方 娟

装帧设计：李 强

责任印刷：常晓辉 顾从群

出版发行：故宫出版社

地址：北京市东城区景山前街4号 邮编：100009

电话：010-85107825 010-45007816 传真：010-65128479

网址：www.gupub.com 邮箱：gub@pup.tsinghua.edu.cn

印 刷：北京雅昌艺术印刷有限公司

开 本：889毫米×1194毫米 1/12

印 数：63.5

版 次：2017年9月第1版

2017年9月第1次印刷

印 数：1-2,000册

书 号：ISBN 978-7-5134-1019-9

定 价：960.00元(全二册)







## 正德时期

正德朝御窑瓷器上承成化，弘治，下启嘉靖，隆庆、万历，其造型、品种、纹饰、款识等在继承前朝已有品种基础上，又有所创新，形成独特风格。

造型方面，一改成化、弘治朝御窑瓷器造型俊秀、小巧玲珑之风格，大件器物开始增多，而且器物胎体趋于厚重，器形种类亦比成化、弘治时期明显增多，其中以烛台、笔架、插屏、绣墩、渣斗、香盒等最具特色。品种方面，比弘治朝有所增加，特别是弘治朝几乎不见的釉里红、斗彩、鲜红釉瓷等品种，此时又恢复烧造。纹饰方面，因正德皇帝崇信伊斯兰教，致使该朝御窑瓷器上大量出现阿拉伯文、波斯文装饰。款识方面，由于正德皇帝崇信藏传佛教，致使该朝御窑瓷器上出现八思巴字年款，这在明代各朝御窑瓷器上堪称绝无仅有。

## Zhengde Period, Ming Dynasty

Zhengde imperial kiln porcelain inherits previous categories and innovates the following generation in many aspects.

On shape, Zhengde imperial porcelain changes from tiny shape to huge one, thin body to thick one. Besides, large size articles increased, as well as body-shapes and categories. The candle holder, brush frame, screen, spittoon, fold-box are those typical productions. On category, Zhengde porcelain increased compared with that of Hongzhi Period, specially the rare categories like underglaze red, Doucai, bright red glaze porcelain restart to fire this time. On decorations, due to the influence of Islam, Zhengde porcelain is largely decorated with Arabic and Persian patterns. On mark, for the reason that Emperor Zhengde is sincerely believe in Buddhism, Ba Si Ba mark appears this time. This mark is distinguished in whole Ming Dynasty.

## 清新优雅 青花、釉里红瓷器

青花瓷器是正德朝御窑瓷器中的大宗产品，因所用青料有所改变，致使该朝御窑青花瓷器具有承上启下之特点。

正德御窑青花瓷器造型比成化、弘治御窑青花瓷器丰富得多，因应社会需求而烧造的书房用具、客厅陈设用器和寺庙用供器明显增多。所绘图案以龙、缠枝花卉纹为主，另外，还流行在器物上书写阿拉伯文、波斯文。所署年款既有青花楷体“大明正德年制”六字款，也有“正德年制”四字款和“大明宣德年制”仿款，更有稀见的八思巴文款。

除了白地青花瓷以外，正德时期还烧造孔雀绿釉青花、黄地青花、绿地青花、青花加矾红彩瓷等品种。

正德御窑釉里红瓷器非常罕见，所见使用鲜红釉局部装饰的三鱼纹碗，釉里红发色虽不成功，但在肥腴的白釉衬托下，三鱼若隐若现，似在水中闲游，耐人寻味。

## Freshness and Elegance

### Blue-and-White Porcelain and Underglaze Red Porcelain

Blue-and-white porcelain is the main products of Zhengde imperial kiln. Since the blue pigment's change, the blue-and-white porcelain this time owns the characteristic of linking between the preceding and the following.

Zhengde imperial blue-and-white porcelain is more abundant in shape comparing to that of Chenghua and Hongzhi. In response to social needs, articles used in study room, living room and the temple significantly increase. The main painted pattern includes dragons, entwined flowers, Arabic characters, Persian character. Marks include "Da Ming Zheng De Nian Zhi", "Zheng De Nian Zhi", imitating mark "Da Ming Xuan De Nian Zhi", and the rare Ba Si Ba mark.

In addition to the blue-and-white, blue-and-white on turquoise blue ground, blue-and-white porcelain with iron red color, blue-and-white on yellow ground, blue-and-white on green ground, are also made this time.

Underglaze red porcelain of Zhengde imperial kiln is quite rare. Though not successful, the bowl decorated with three fishes in underglaze red is full of taste.

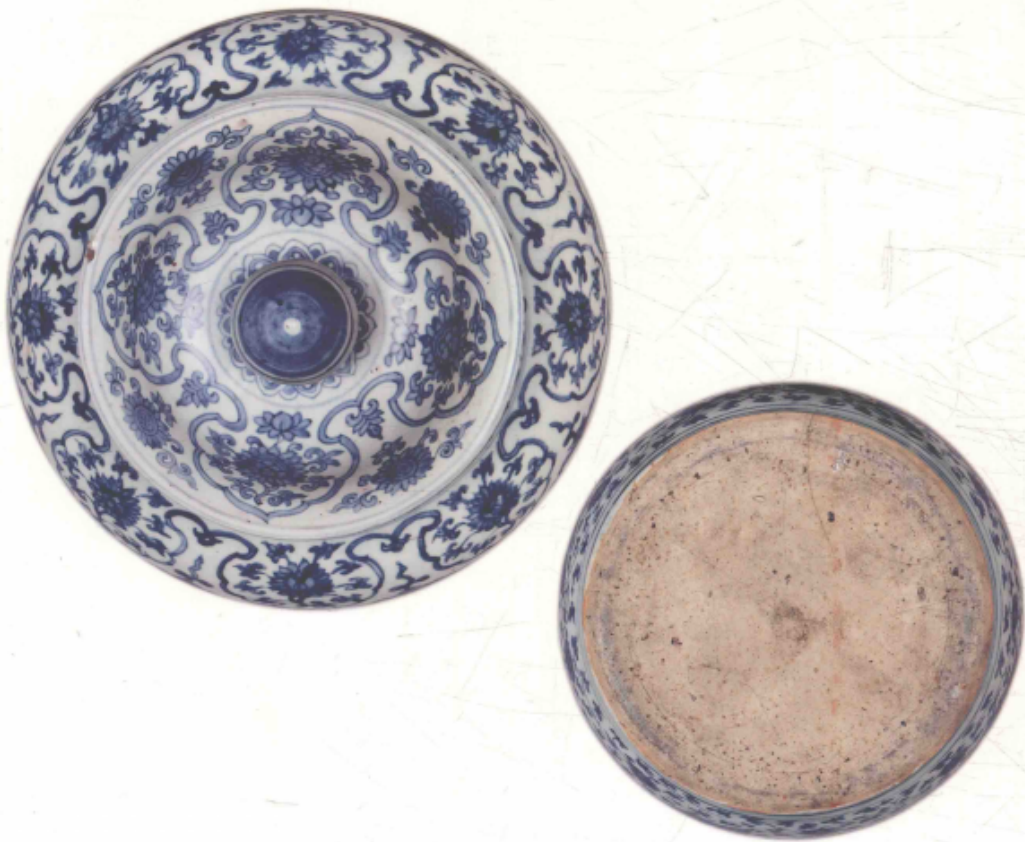
## 青花凤穿缠枝莲纹盖罐

明正德

通高40.5厘米 口径17厘米 底径22厘米  
故宫博物院藏

罐撇口、束颈、溜肩、鼓腹，腹下渐收敛，细砂底。附拱顶宝珠钮盖。通体青花装饰。盖面绘云肩纹，云间内绘朵莲纹，云肩外绘朵菊纹。罐外壁以弦线将纹饰分为四层：颈部绘飘带状纹；肩部绘下垂如意云头纹，云头内绘朵莲纹；腹部绘主题纹饰四凤穿缠枝莲纹；胫部绘海水江崖间以“王”字形云纹。

此罐青花色泽深蓝中泛灰，纹饰层次分明，画工精湛，堪称正德朝景德镇民窑青花瓷中的佳作。（黄卫文）





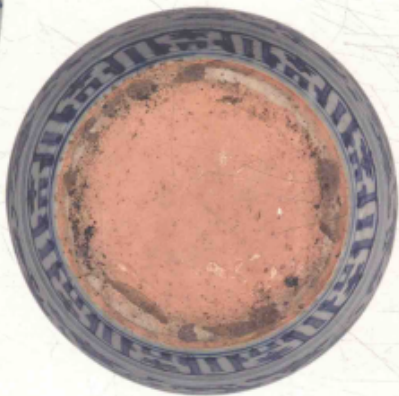
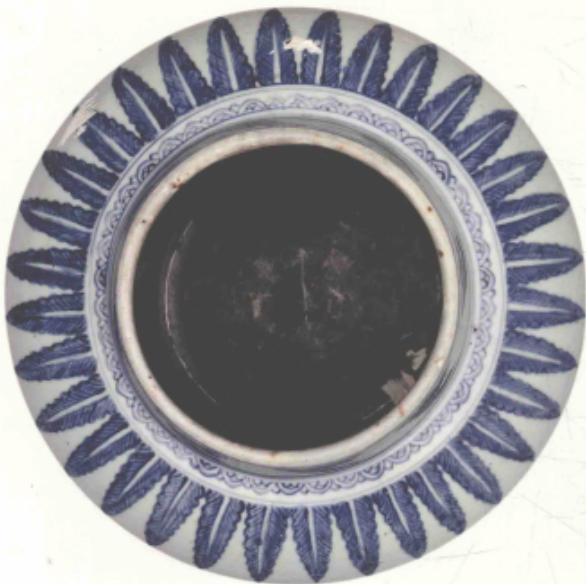
157 青花缠枝牡丹纹罐

明正德

高 25.5 厘米 口径 14 厘米 底径 16.5 厘米

故宫博物院藏

罐敞口、圆唇、斜直颈、溜肩、鼓腹、平底。胎体较厚。通体青花装饰。颈部绘灵芝云纹，肩部绘覆蕉叶纹，腹部绘缠枝牡丹纹，近底处绘变形仰莲瓣纹。（冀洛源）





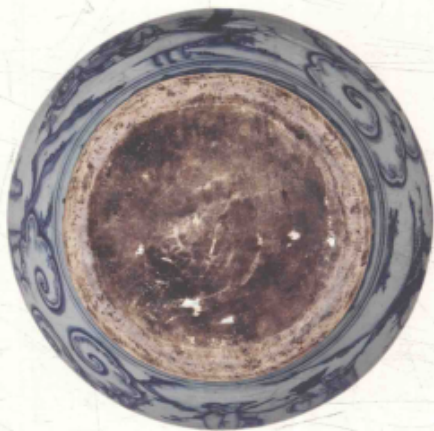
158 青花人物故事图罐

朝正德

高 28.6 厘米 口径 15 厘米 底径 17.7 厘米

故宫博物院藏

罐撇口、束颈、丰肩、鼓腹，腹下渐收敛，近底处外撇，平底。通体青花装饰，以弦线将纹饰分为四层；颈部绘灵芝云纹；肩部绘云肩纹，其内绘折枝花纹；腹部绘人物故事图主题纹饰，一面为三老者对弈图，另一面为四老者山间闲谈图。胫部绘变形仰莲瓣纹边饰。砂底无釉。（黄卫文）





159 青花海水应龙纹出戟尊

明正德

高21.7厘米 口径14.8厘米 足径10.5厘米

故宫博物院藏

尊口呈喇叭状，长颈、折肩、圆鼓腹，足部外撇并分为三层。颈部、腹部和足部两侧各置出戟。口内绘蕉叶纹，外壁颈部和腹部绘海水应龙纹。足部上层绘云纹、中层绘应龙纹、下层绘海水纹。外底以矾红彩书一“禾”字。（唐雪梅）

