

1929



2009

# 浙江自然博物馆概览

An Overview of Zhejiang Museum of Natural History

浙江自然博物馆 编

Zhejiang Museum of Natural History



浙江古籍出版社

1929~2009



# 浙江自然博物馆概览

An Overview of Zhejiang Museum of Natural History  
( 1929—2009 )

浙江自然博物馆 编  
Zhejiang Museum of Natural History

---

**图书在版编目(CIP)数据**

浙江自然博物馆概览 / 浙江自然博物馆编. —杭州:浙江古籍出版社, 2009.12

ISBN 978-7-80715-508-9

I. 浙… II. 浙… III. 自然历史博物馆—简介—浙江省  
IV. N282.55

中国版本图书馆 CIP 数据核字(2009)第 224449 号

---

## 浙江自然博物馆概览

浙江自然博物馆 编

^^ 出版发行 浙江古籍出版社  
^^ (杭州体育场路 347 号)  
^^ 出 版 人 胡小罕  
^^ 责任编辑 石英飞 关俊红  
^^ 美术编辑 刘 欣  
^^ 激光照排 杭州兴邦电子印务有限公司  
^^ 印 刷 浙江海虹彩色印务有限公司  
^^ 开 本 889×1194 1/16  
^^ 印 张 14.75  
^^ 版 次 2009 年 12 月第 1 版  
^^ 印 次 2009 年 12 月第 1 次印刷  
^^ 书 号 ISBN 978-7-80715-508-9  
^^ 定 价 396.00 元(精)

## 编辑委员会

顾 问：毛昭晰 鲍贤伦

主 编：康熙民

编 委：（按姓氏笔画排列）

韦立立 兰国英 冯 飞 严洪明

吴晓明 张方钢 陈水华 范忠勇

范俊涛 金幸生 骆土泉 徐昞昞

英文翻译：王英杰 徐雪英 徐 明

|        |  |         |
|--------|--|---------|
| 一、概述   | Part I Profile                               | 006     |
| 回眸与展望  | Looking Back and Ahead                       | 008/010 |
| 馆史印迹   | Museum History                               | 011/029 |
| 领导关怀   | Leader Support                               | 030/039 |
| 二、展示宣传 | Part II Exhibitions and Publicity            | 040     |
| 基本陈列   | Permanent Exhibitions                        | 042/093 |
| 临特巡展   | Temporary, Special and Itinerant Exhibitions | 094/114 |
| 馆际协作   | Cooperation between Museums                  | 115/119 |
| 科普服务   | Education and service                        | 120/131 |
| 三、藏品管理 | Part III Collection Management               | 132     |
| 藏品征集   | Collection Acquisition                       | 134/140 |
| 珍品荟萃   | A Galaxy of Treasures                        | 141/165 |
| 藏品保护   | Collection Conservation                      | 166/171 |
| 四、学术研究 | Part IV Academic Research                    | 172     |
| 学术活动   | Academic Activities                          | 174/187 |
| 学术平台   | Academic Platforms                           | 188/189 |
| 五、对外交流 | Part V Domestic and Foreign Exchanges        | 190     |
| 展览交流   | Exhibition Exchanges                         | 192/194 |
| 学术交流   | Academic Exchanges                           | 195/203 |
| 业务考察   | Professional Visits                          | 204/213 |
| 六、附录   | Part VI Appendix                             | 214     |
| 历任馆领导  | Successive Leaders                           | 215/215 |
| 在职人员   | In-service Staff                             | 216/217 |
| 主要荣誉   | Major Awards                                 | 218/218 |
| 论著目录   | Papers and Books                             | 219/230 |
| 馆区示意图  | Museum Sketch Map                            | 231/232 |
| 地理位置图  | Museum Location Map                          | 233/233 |
| 后记     | Postscript                                   | 234     |

## 编辑委员会

顾 问：毛昭晰 鲍贤伦

主 编：康熙民

编 委：（按姓氏笔画排列）

韦立立 兰国英 冯 飞 严洪明

吴晓明 张方钢 陈水华 范忠勇

范俊涛 金幸生 骆土泉 徐昞昞

英文翻译：王英杰 徐雪英 徐 明

|        |  |         |
|--------|--|---------|
| 一、概述   | Part I Profile                               | 006     |
| 回眸与展望  | Looking Back and Ahead                       | 008/010 |
| 馆史印迹   | Museum History                               | 011/029 |
| 领导关怀   | Leader Support                               | 030/039 |
| 二、展示宣传 | Part II Exhibitions and Publicity            | 040     |
| 基本陈列   | Permanent Exhibitions                        | 042/093 |
| 临特巡展   | Temporary, Special and Itinerant Exhibitions | 094/114 |
| 馆际协作   | Cooperation between Museums                  | 115/119 |
| 科普服务   | Education and service                        | 120/131 |
| 三、藏品管理 | Part III Collection Management               | 132     |
| 藏品征集   | Collection Acquisition                       | 134/140 |
| 珍品荟萃   | A Galaxy of Treasures                        | 141/165 |
| 藏品保护   | Collection Conservation                      | 166/171 |
| 四、学术研究 | Part IV Academic Research                    | 172     |
| 学术活动   | Academic Activities                          | 174/187 |
| 学术平台   | Academic Platforms                           | 188/189 |
| 五、对外交流 | Part V Domestic and Foreign Exchanges        | 190     |
| 展览交流   | Exhibition Exchanges                         | 192/194 |
| 学术交流   | Academic Exchanges                           | 195/203 |
| 业务考察   | Professional Visits                          | 204/213 |
| 六、附录   | Part VI Appendix                             | 214     |
| 历任馆领导  | Successive Leaders                           | 215/215 |
| 在职人员   | In-service Staff                             | 216/217 |
| 主要荣誉   | Major Awards                                 | 218/218 |
| 论著目录   | Papers and Books                             | 219/230 |
| 馆区示意图  | Museum Sketch Map                            | 231/232 |
| 地理位置图  | Museum Location Map                          | 233/233 |
| 后记     | Postscript                                   | 234     |



# 一、概述

回眸与展望

馆史印迹

领导关怀





## 回眸与展望

### ■ 康熙民

浙江自然博物馆是中国为数不多的省级自然历史博物馆，也是中国人自己创办的历史最悠久的博物馆之一。历经80年来几代自博人艰辛努力的传承、积累和探索，业已发展成为一个理念先进、国内一流、富有浙江特色的自然博物馆。值此八十年馆庆之际，编撰出版《浙江自然博物馆概览》，对我馆建馆历程和事业发展作一回眸、梳理和展望，旨在增强广大职工的荣誉感、使命感和责任意识，同时争取各级政府和各界继续关心和支持浙江自然博物馆，督促和激励我们不懈地成长和进步。

浙江自然博物馆馆史，应该追溯到1929年首届西湖博览会基础上创建的浙江省西湖博物馆。据史料载，当年规模空前的博览会分“八馆二所”，其中博物馆设水产部、植物部、动物部、昆虫部、瑶山部、矿产部及动物园等展示，内容丰富，展品众多。鉴于这次盛会影响深远，展品来之不易，博览会呈请省政府设立了西湖博物馆，部分展品移赠博物馆以作留念和永资观摩。西湖博物馆草创之际，还很难建立一个较为系统的自然类陈列。当时西湖博物馆技师兼自然部主任、后来任馆长的董聿茂先生看到这种情况后，就带领几位助手到福建、广东、山东、青海等地采集和制作了许多动植物标本，同时还开展了国际间的标

本交流，这些工作极大地丰富了西湖博物馆的自然类藏品，博物馆学术研究也从此发端。抗战期间，西湖博物馆辗转迁徙。在极其困难的条件下，董聿茂先生和他的同事钟国仪、钱惠馨、康美业、顾剑谊等历经艰辛，将博物馆的藏品和图书、仪器保护下来，同时继续开展标本采集和科学研究。筚路蓝缕和百折不挠的创业精神，激励了一代代自博人不息进取。

新中国成立后，西湖博物馆获得新生，1953年更名为浙江博物馆。1984年7月，浙江博物馆的自然之部分出单独建制，成立了浙江自然博物馆。新馆挂牌后，囿于馆舍、经费等原因，博物馆的功能运作一度受到制约，无固定陈列场所，影响了社会教育功能的有效释放，在社会上“隐姓埋名”10年之久。然而，自博人对新形势下馆建和发展的实践探索始终没有停止，自博人忠于职守、精勤业务、淡泊明志的进取精神和务实作风始终未曾断代。付出换来了成绩：馆舍建设方面于1991年建成库房业务楼，1998年1月建成陈列馆；藏品收集汇聚了浙江省自然类藏品之精华，门类齐全、珍品荟萃；学术研究成果斐然，多项成果获奖；展示教育形式多样、手段多元，“恐龙与海洋动物陈列”荣获'98全国十大陈列展览精品奖。同时积极参与社会文化建设，建立广泛的合作渠道。尤其

是陈列馆建成开放后，社会作用日益显现，政府投入同步递增，易地建设新馆提上了议事日程，并被列入浙江文化大省建设的总体规划和省“十五”重点建设项目。通过精心筹备、辛勤建设，新馆于2009年7月28日建成开馆。

新馆开馆标志着浙江自然博物馆发展史上一次重大的转折和飞跃，一座集科普教育、收藏研究、文化交流、智性休闲于一体的全新的浙江自然博物馆，将更好地满足时代需要，承担起应有的社会功能和文化责任。我们将进一步加强科学管理，完善内部机制，坚持“共建共享、文化惠民”的宗旨和以人为本的服务理念，营造良好的场馆环境，努力践行“贴近实际、贴近生活、贴近群众”的要求，不断提高为观众、为社会服务的能力和质量，使新馆真正成为全国自然与环境科学教育普及基地、浙江省自然历史与生物多样性研究中心、浙江省自然资源与可持续发展信息库、青少年自然探索和科学体验的文化场所、开展对外交流合作的平台，在满足人民群众日益增长的精神文化需求过程中发挥应有的作用。同时积极探索与实践我馆科学发展新模式，构筑陈列展览精品化发展之路、教育服务品牌化发展之路、科普下乡常态化发展之路、藏品征集多元化发展之路、学术研究集约化发展之路、

内部运行管理科学化发展之路、后勤服务社会化发展之路、安全管理标准化发展之路、信息管理现代化发展之路、馆际协同共享化发展之路。

回眸是为了总结历史经验，展望是为了推进科学发展。由现实出发，我们不难得出这样的结论：浙江自然博物馆取得的成果是几代自博人心血、汗水和智慧结晶；有赖于政局稳定、经济发展、文化昌明、社会进步的良好环境；有赖于各级政府和社会各界的关心和支持；更是源于邓小平理论、“三个代表”重要思想和科学发展观的理论武装，源于改革开放和现代化建设路线方针政策正确指导。

抚今追昔，鉴往开来。八十年的沧桑巨变足以让每一位自博人感到自豪和光荣，新的起点和征程更让我们感到使命艰巨、责任重大。从博物馆可持续发展的战略来审视，从国内外先进博物馆的发展趋势来参照，我们依然面临挑战，同时应看到有许多机遇可待捕捉，许多空间有待拓展。作为新一代自博人，理应承担使命，志存高远，克难攻坚，进一步解放思想，改革创新，顺时应势，不断创造新的业绩。这不仅是当代博物馆建设的客观要求，也是我馆与时俱进、科学发展的时代抉择。



## Looking Back and Ahead

Kang Ximin

Zhejiang Museum of Natural History (ZMNH) is among a handful of provincial museums of natural history in China, and one of the museums founded solely by Chinese people that has the longest history. With great endeavors made by generations of its staff over the past eighty years, ZMNH has now become a nationally renowned museum of natural history with a modern rationale and rich characteristics of Zhejiang Province. On the occasion of celebrating the 80th anniversary of ZMNH, the book titled “An Overview of Zhejiang Museum of Natural History” has now been published, aiming at fostering the staff members’ sense of accomplishment, sense of commitment, and sense of responsibility on one hand, and gaining continuing attention and support from the government and the society which is the driving force for our future development and expansion.

The history of ZMNH dates back to year 1929 when its precursor, the West Lake Museum was founded based on the West Lake Exposition. According to historical records, the Grand Exposition then was divided into sections of eight departments and two institutions, and the museum section was composed of displays focusing on marine products, plants, animals, insects, Dayao Mountain (in Guangxi Province), minerals, and zoo, respectively, with collections of fabulous scope and diversity. The Exposition was so successful and influential, that with the approval of the provincial government, it was soon decided to build the West Lake Museum to preserve some of the precious collections and donations to the Exposition. At its beginning though, the Museum lacked systematic displays for natural sciences. Dr. Dong Yumao, who became the curator of the Museum later, along with his assistants, collected and made numerous specimens of plants and animals, and also conducted specimen exchange programs with oversea institutions, which greatly expanded the Museum’s collections and shaped the research work conducted at the Museum. During the War, the Museum re-located from one place to another, but even under those extremely tough conditions, Dr. Dong and his colleagues such as Zhong Guoyi, Qian Huixin, Kang Meiyue, Gu Jianyi and so forth, made tremendous efforts saving the museum collections, books, and instruments from destruction while still maintaining specimen collection and research activities. The perseverance and the spirit of those pioneers encouraged and propelled generations of the followers at ZMNH.

With the founding of the People’s Republic of China in 1949, the West Lake Museum had a great revival, and was renamed as “Zhejiang Provincial Museum” in 1953. In July

1984, the Department of Natural Science within the Museum formed an independent entity which was ultimately named as “Zhejiang Museum of Natural History”. Due to space and funding limitations, the newly-formed ZMNH did not function actively until the exhibition galleries were open to the public in January, 1998. ZMNH is featured by its unique and precious collections and specimens, the systematic and its versatile and state-of-the-art facility-based education exhibitions targeting the students and the society. Remarkably, the Display of Dinosaurs and Marine Animals won the award of “China Top Ten Excellent Exhibition” in 1998. Supported by Zhejiang Provincial government, a new ZMNH building was completed and opened to the public on July 28, 2009.

The new ZMNH building marks another giant leap and turning point in the history of ZMNH. Such a modern museum with combined functions of education, collection, cultural exchange and recreation will undoubtedly better suit social needs and fulfill its social responsibilities. With the goal of “To build and share together, to benefit people through culture development” and the “People-oriented” rationale, we will further strengthen our scientific management and inner control system, strive to “Be close to reality, to life and to people”, to continuously enhance our capability and quality of serving the society, and to make the new ZMNH a complex platform for education, research, scientific exploration, information storage, and culture exchange, which can help to meet people’s increasing spiritual demands. We will also proactively explore new models for the development of ZMNH, and make special efforts in areas such as exhibition of excellence, branded educational services, widespread countryside services, collection through multiple channels, intensification of academic research, scientific inner control and management, socialized logistical support, standardized safety management, modernized information management, and resource sharing among peer museums.

Looking back will allow us to learn lessons from history, while looking forward would help to accelerate scientific development. We conclude that the accomplishments of ZMNH rooted in the tremendous endeavors of several generations of the ZMNH staff, and also rely heavily on a stable and peaceful social environment, support from the government and the society, and general strategic guides by “Deng Xiaoping Theory”, the “Three Represents Thought”, and the “Scientific Development Concept”.

“To recall the past and compare it with the present, to carry on the past and to open new ways for future.” Each staff member should be proud of the rich history and profound changes of ZMNH over the past eighty years, and meanwhile, the new starting point and the way ahead of us bring new responsibilities and commitments. In light of the strategy of sustainable development, and the developing trend of modern museums nationwide and overseas, we have both challenges and opportunities in many aspects. As the new generation of the ZMNH staff, we should take on the mission of making greater achievements through our innovative and diligent work. This is not only a necessity for the development of a modern museum, but also a call for ZMNH to advance with the times.



1929年西湖博览会  
博物馆职员合影



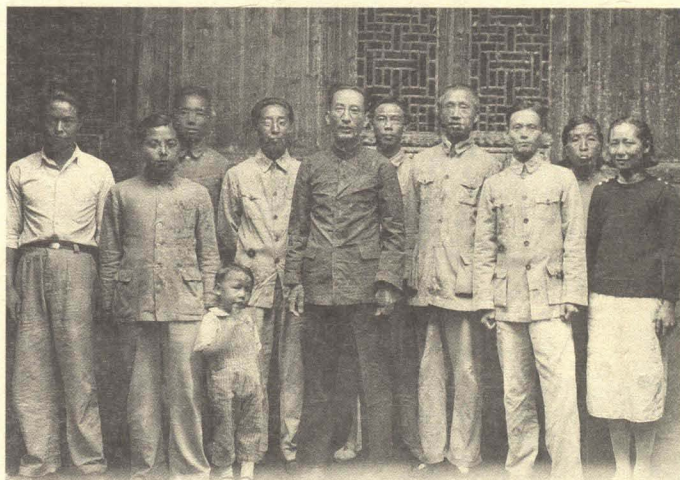
1933年西湖博物馆  
全体职员合影



1934年全体职员合影

浙江省立西湖博物馆全体职员摄影

中華民國三十三年六月



西湖博物馆在松阳南洲时停办时摄影留念 1941年

1941年7月西湖博物馆在松阳停办时职员合影  
康美业(左二)、董聿茂(左五)、钟国仪(左六)、顾剑谊(右三)、  
钱惠馨(右一)



1950年11月西湖博物馆创立二十周年纪念合影  
第一排: 康美业(左二)、郁永佚(左三)、董聿茂(左四)  
第二排: 钱惠馨(右一) 第四排: 钟国仪(左一)、魏丰(左二)



1953年接待国家文物局专家时有关领导合影  
前排(从右往左): 董聿茂、宋云彬、邵裴子、沙孟海  
后排: 林清廉(左一)、江闻道(左三)、郦乘铨(左五)



1954年10月工会活动合影



1955年部分自然科学部工作人员和临时讲解员合影



1956年8月工会活动合影



1957年1月自然科学部职工合影  
岳月华(左一)、康美业(左三)、钟国仪(左四)、王复振(左五)、  
钱惠馨(左六)、潘玲(左七)、魏丰(左八)、韦思奇(左十)、  
聂啸云(左十一)



1957年1月魏丰、吴维棠、钟国仪、潘玲、康美业、韦直(从  
左至右)合影





1957年1月浙江博物馆职工合影



1965年部分工作人员合影



1971年欢送钱惠馨退休合影



1980年7月《中国植物志》(豆科卷)审稿组合影



1980年10月自然科学部  
职工合影