

008838

# 浦江县志

PUJIANG ANNALS

(1986 ~ 2000)

浦江县地方志编纂委员会

主编 何保华

中華書局



# 浦江县志

PUJIANG ANNALS  
(1986~2000)

浦江县地方志编纂委员会

主编 何保华

中華書局

2005年

## 图书在版编目 (CIP) 数据

浦江县志: 1986~2000 / 浦江县地方志编纂委员会编.

—北京: 中华书局, 2005

ISBN 7-101-04756-4

I. 浦 ... II. 浦 ... III. 浦江县—地方志—

1986~2000 IV. K295.54

中国版本图书馆 CIP 数据核字 (2005 ) 第 082082 号

责任编辑: 朱 慧

## 浦江县志 (1986~2000)

浦江县地方志编纂委员会编

★

中 华 书 局 出 版

(北京市丰台区太平桥西里38号 100073)

<http://www.zhbc.com.cn>

E-mail: zhbc@zhbc.com.cn

余杭人民印刷有限公司印刷

★

787×1092 1/16 93.75印张 36插页 1683千字

2005年10月第1版 2005年10月第1次印刷

印数: 1—4000册 定价: 180元

---

ISBN 7-101-04756-4 / K·2044

## 浦江县简况

浦江县位于浙江省中部，山川灵秀，人文荟萃，素有“天地间秀绝之区”和“小邹鲁”之称。自宋迄清，方凤、吴莱、柳贯、宋濂、宋璩、心越等以文学或书画名闻遐迩，近代张书旂、吴弗之、张振铎、曹聚仁、石西民、张世禄等分别驰誉于艺坛文苑，浦江被文化部命名为“书画之乡”。上山遗址考古证明，在距今九千至一万一千年的早期新石器时代，这里就是世界稻作农业的最早起源地之一。县内有全国重点文物保护单位郑义门古建筑群（江南第一家）、省文物保护单位龙德寺塔和县文物保护单位35处，省级风景名胜区仙华山独秀浙中，马岭、官岩山、白石源、通济湖等风景区各呈特色。

改革开放以来，特别是1985年以后，是浦江国民经济和社会发展最快最好的一段时期。2000年生产总值31亿元，人均8202元，年递增率都在13%以上。第一、第二和第三产业的比重为10:64:26，实现了由农业社会向工业社会的跃进。乡镇企业异军突起，民营经济成为县域经济的支柱。全县有服装、锁具、抽纱、机械、造纸、纺织、建材、针织、皮革等工业企业3400余家，被称为“水晶玻璃之都”。传统产品有茶叶、蚕茧、生猪、火腿、桃形李等。农村经济发生深刻变化，城乡建设日新月异，城区面积由2.3平方公里扩展到8平方公里。交通、邮电、水利、能源、环保等基础设施建设成绩斐然，教育、科技、文化、卫生、体育事业长足进步，居民生活显著改善。2000年步入小康县行列。

## INTRODUCTION

Located in the center of Zhejiang Province, Pujiang has its green mountains and clear water. Having enjoyed the reputation of being *the most beautiful land between Heaven and Earth*. And that attracted the distinguished people gathered together here for their painting and calligraphy. So it brought being *thriving of culture and education*. From Song to Qing Dynasty, many another outstanding painters and calligraphyists lived here, they were Fang Fen, Wu Lai, Liu Guang, Song Lian, Song Sui, Xing Yue. To the modern times, here many figures played an outstanding role in the literary world, they were Zhang Shuqi, Wu Fuzhi, Zhang Zhengdu, Cao Juren, Shi Ximin, Zhang Shilu. Now Pujiang is named *the Home of Painting and Calligraphy* by



the Ministry of Culture. *The Shangshan Village* Site has been engaged in archaeological study to prove being one of the earliest origin places of the rice industry in the world. It is 9,000-11,000 years. Here as well as the rich natural resources, these places are also rich in their culture. They are the national-level major historical and cultural sites under state protection Zhen Yimen ancient buildings, also named *First Family in Jiangnan* and the provincial-level's *Longdeshi Tower and Xian Hua Mountains* – an unique scenery in Zhejiang and another 35 county-level's places. They are showing their ingenuity especially the Ma Lin Mountain ,Guan Yan Hill,Bai Shi Yuan River,Tongji Lake.

Since the opening of China,esp. 1985,people in Pujiang have gained great achievements in economy and social development.In 2000,the GDP arrived RMB 3,100 million yuan.Per capita income was RMB 8,202 Yuan,increaced at an average rate of over 13 per cent a year. The proportion is 10:64:26 among the primary industry,secondary industry and the service sector. And it brings to realize its developed by leaps and bounds from agricultural society to Industry one. The civil economy has been changed into key's because of the town enterprises suddenly coming to the fore in a new force. There are 3,400 indutrial enterprises including clothings, locks,arts & crafts drawnwork,machinery,papermaking,textile, building materials, knitting, leather in Pujiang. And it is named *the Capital of the Crysta in China*. Here the traditional products are tea, silkworm cocoon,pigs,hams, peach-shape plums.The economy in villiage has changed great,news building come out daily in both town and county.The city areas are widen to 8 sqkm from 2.3 sqkm.The infrastructure buildings such as transportation,post and telecommunications, waterconservancy,energy,environmental protection have achieved great successes.Social undertakings such as education,techniques, culture,health , physical culture are developing quite well. The life level of the people are getting better and they have stepped into their comfortable life in 2000.



△ 县城浦阳镇塔山公园鸟瞰

▽ 省级风景名胜区仙华山一角







△ 县城浦阳镇俯瞰(纵为和平路,1998年)

▽ 黄宅镇远眺(横为浦郑公路,1998年)







△ 白马镇鸟瞰(左为浦郑公路,1998年) ▽ 郑家坞镇纵览(上为浙赣铁路,横为杭金公路,1998年)

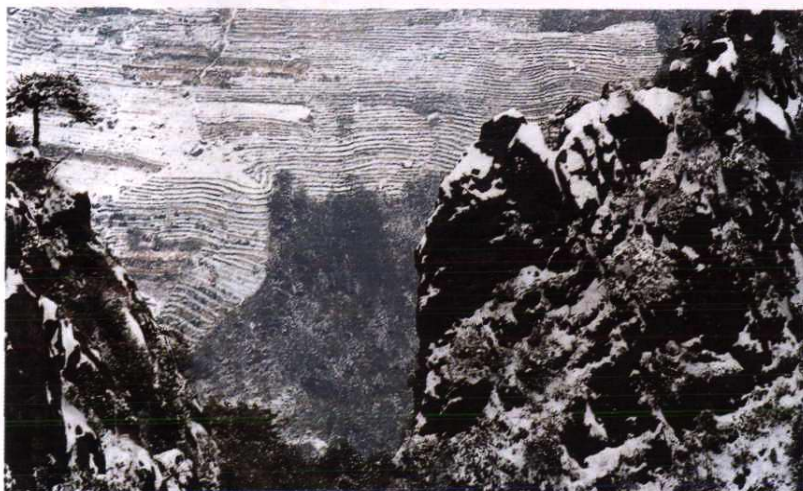






△ 潘宅中心畈标准农田远眺

▽ 仙华山对面梯田掠影



▽ 花桥乡下宅溪新茶园一角



△ 名茶“浦江春毫”汤色







△ 通济桥水库鸟瞰



◁ 参加金坑岭、外胡两水库及通济桥水库渠道加固扩建工程验收后浦江县老领导合影(1994年11月)

▽ 金坑岭水库一角

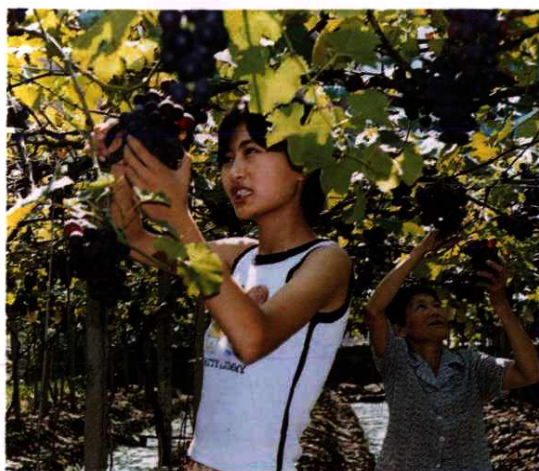


▽ 捕鱼时节(通济桥水库, 1993年)



5





△ 前陈葡萄熟了



△ 徐地畈果农喜收黄花梨



▽ 半喂入稻麦联合收割机收割场景

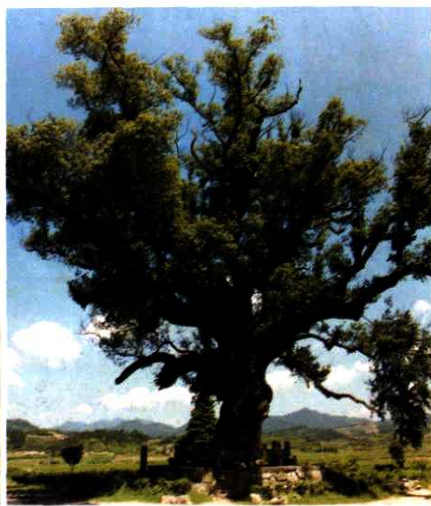


△ 浦江特产桃形李

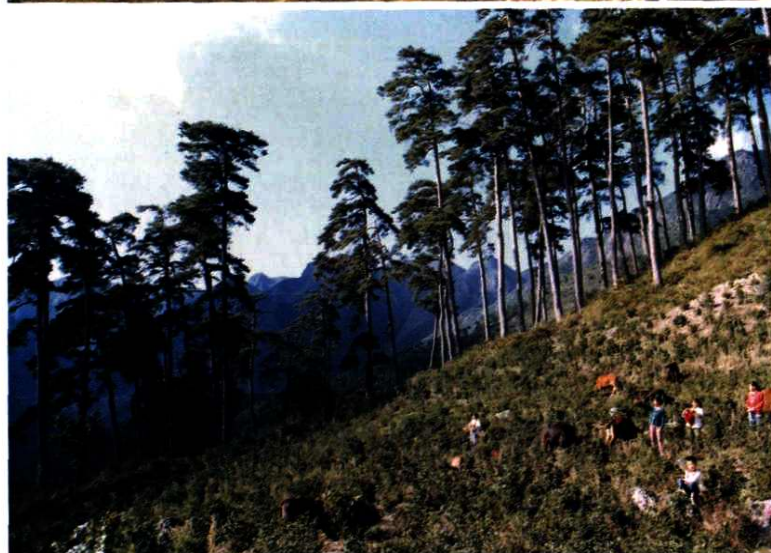


◁ 县外贸猪场剪影





△ 左：浦阳镇许里村古紫藤  
右：杨田周古樟“大树王”  
◁ 杭坪镇西山坪古松林



▷ 浦阳江城区段  
整治后新貌







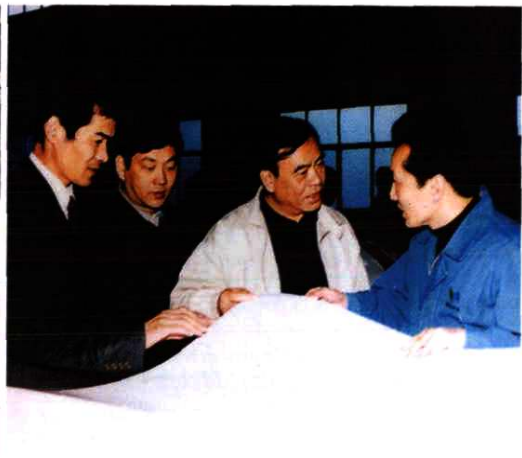
△ 省委书记张德江(中)视察梅花锁业集团



△ 省委书记习近平(右)视察水晶工艺博物馆



△ 省委书记习近平(左)视察力霸皇集团  
▽ 百炼集团公司一角



△ 省长吕祖善(左三)视察天听纸业公司







△ 超界集团有限公司外景



△ 恒昌工贸集团有限公司外景



△ 天虹纺织有限公司织布车间掠影

▽ 梅花锁业集团有限公司门景



▽ 天听纸业有限公司门景







△ 超界集团公司生产的绗缝绣花床上用品



△ 天隆公司为上海火车站承制的直径2米水晶球(1999年)



▽ 水晶玻璃巨型吊灯：高11米，直径5米，重1.3吨，由433个灯头组成

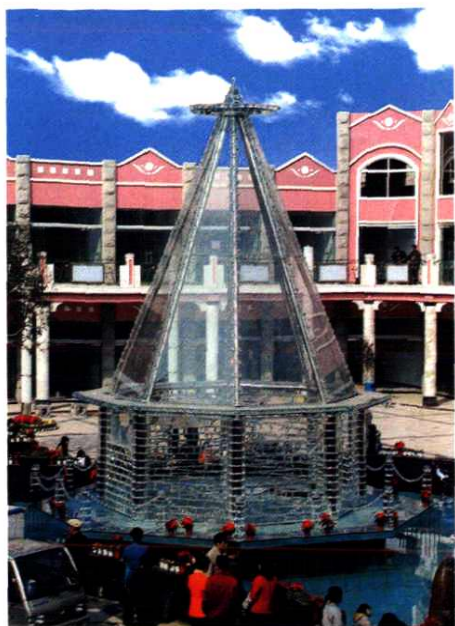
▽ 中爱实业公司羊毛平针地毯车间一角



▽ 竹编(左起)：麦秆贴花瓶(高45厘米)、麦穗饭篮(37厘米)、小圆提篮(42厘米)、大提篮(90厘米)







△ 为江西上饶制作的“水晶宫”：高11米，直径9米

▷ 豆腐皮捞制工场即景(前陈)

▽ 县工艺美术公司麦秆画工场一角



△ 浦江金华火腿晒制



▽ 竹根雕人物(左起)：寿星、牧唱







△ 时代广场购物中心外景

▷ 右上: 浦阳镇农历十月廿日物资交流会布市一角

▷ 右中: 新华桥西边连接有7家鲜花店



▽ 水晶灯饰城门景



▷ 右下: 解放东路玉案头不足百米的老街上有20余家金店



◁ 中心农贸市场门景

