



吉林省地方志资源开发立项项目

向海志

崔凤午 赵福山 主编

吉林文史出版社



吉林省地方志资源开发立项项目

向海志

崔凤午 赵福山 主编

吉林文史出版社

谨以此书献给

中国自然保护区创建30周年
吉林向海国家级自然保护区建立35周年

图书在版编目 (CIP) 数据

向海志 / 崔凤午, 赵福山主编. -- 长春: 吉林文史出版社, 2016.12

ISBN 978-7-5472-3712-0

I. ①向… II. ①崔… ②赵… III. ①自然保护区—概况—通榆县 IV. ① S759.992.344

中国版本图书馆 CIP 数据核字 (2016) 第 296004 号

向海志

XIANGHAI-ZHI

主 编: 崔凤午 赵福山

责任编辑: 王丽娟

封面设计: 李子秋 陈亚翔

出版发行: 吉林文史出版社 (长春市人民大街4646号)

印 刷: 长春方圆印业有限公司

开 本: 787mm×1092mm 1/16

印 张: 41.5

字 数: 600千字

版 次: 2016年12月第1版

印 次: 2016年12月第1次印刷

书 号: ISBN 978-7-5472-3712-0

定 价: 128.00元

如发现印装质量问题, 影响阅读, 请与印刷厂联系调换。

版权所有侵权必究

《向海志》编纂单位

白城师范学院

中共通榆县委、通榆县人民政府

吉林向海国家级自然保护区管理局

《向海志》编纂委员会

主 任 刘晓春 孙洪君 张宝权

副 主 任 梅泽民 刘振兴 于海航

崔凤午 林宝庆 杨 军

委 员 （按姓氏笔画排序）

王彦全 王春侠 王晓玲 丛建民

孙楠楠 吴 珍 邹义勳 杨绍安

赵廷发 赵福山 荀光辉 邴文凯

《向海志》编审委员会

主 审 梅泽民 林宝庆

副 主 审 王晓玲 王春侠 王彦全 丛建民

《向海志》编纂人员

主 编 崔凤午 赵福山

副 主 编 荀光辉 崔红艳 吴 珍 邴文凯

刘 蕾 邹义勇 陈 京

编 委 （按姓氏笔画排序）

于思萌 白春明 卢明霞 刘 畅

孙楠楠 闫守刚 朱莫愁 李 萍

李子秋 赵 磊 赵 萍 赵天彬

张双龙 张慧影 贾广耀 徐 焱

徐广泽 康海波

英语翻译 康海波

吉林省地方志资源开发立项项目审验组

李云鹤 赵 飞 顾 太 严 寒 常京锁

凡 例



一、本志记述的范围，包括向海及其通榆县向海蒙古族乡、乌兰花镇、兴隆山镇和同发畜牧场属于向海范围内的村屯。

二、吉林向海国家级自然保护区（简称向海保护区），上限自 1981 年吉林省人民政府批准建立开始，下限至 2015 年末，根据需要，部分内容突破上限，溯源到事物发端。部分内容下限延至 2016 年 8 月止稿，附在《附录》部分。保护区范围内的乡（镇、场）上限自成立之日，亦可溯源自事物发端，下限止于 2015 年末。

三、《向海志》记述的内容，主要是向海及境域内乡（镇、场）及村屯。设自然环境、历史沿革、湿地资源、野生动植物、科研与科普、资源保护、规划建设、综合管理、生态旅游、人口民族宗教、遗址文物、文化艺术、向海人物、驻地机构，共 14 章 89 节。篇目设计，既继承传统，又力求创新，既符合志体要求，又不拘一格，有所突破。

四、全书以《概述》开篇，概括事物全貌，揭示内在规律；以《大事记》置后，采用编年体和纪事本末体相结合的方法，记述保护区成立以来的大事、要事、新事，与志书中各章节内容互为经纬，以反映事物发展的全过程。

五、本书体例采用以类系事，横排纵写的结构方式，全篇分章、节、目（个别章节下亦有子目）等层次。运用志、记、述、传、图、表、录等体裁形式，行文采用规范的语体文，力求朴实、简练、通俗、流畅。

六、人物记述坚持生不立传的原则，已故人物设“人物传略”，在世人物以事系人入志，设“人物简介”，先进模范人物设“人物表录”入志。

七、历史纪年，辛亥革命前使用朝代纪年，括注公元纪年；辛亥革命后使用公元纪年，括注朝代、国号纪年；东北沦陷时期（1931 年 9 月 18 日至



1945年8月15日),采用公元纪年,括注民国年号(不注日伪政权年号);解放后是指1946年1月25日开通县人民民主政权建立后;建国后是指1949年10月1日中华人民共和国成立后。

八、本志涉及的数字,以政府统计部门数字为准,统计部门未作统计的,按各行业、各部门的统计实录。向海自然保护区动植物资源及各种数字,均由向海管理局提供。向海自然保护区内四个乡镇场的12个行政村、32个自然屯,与本志调查的数据不符,系由于区划变化或某些原因所致,未做更改,仍采用习惯使用的原始数据。

九、本志计量单位原则上采用国家法定标准计量单位,涉及区域、区划面积以平方千米为准,涉及土地面积以公顷为准。

十、本志所采用的资料,包括史料、人名、地名、年代、数据、引文等由各有关部门提供,或撰稿者搜集整理,并经考证核实,一般不注出处。

十一、根据记述需要或便于参考比较,部分章节内容涉及通榆全县或向海自然保护区周边乡(镇、场),以反映区域之间多元文化的互相渗透与影响。

十二、本文收录的墨迹、绘画、摄影、剪纸等作品由通榆县委宣传部、通榆县旅游局、吉林向海国家级自然保护区管理局(简称向海管理局)提供;艺文类作品散见于《新华每日电讯》《吉林日报》《白城日报》或由作者本人及知情者提供,除已署名外,未与本人联系,敬请见谅。



鹤乡秋歌(杨生摄)

Explanatory Notes



I. This chorography includes Xianghai, Xianghai Mongolian Town, Wulanhua Town, Xinglong Town, Tongfa Livestock Farm and other villages within Xianghai.

II. Xianghai National Nature Reserve of Jilin Province, its upper limitation can go back to the year 1981 when Jilin Provincial People's Government approved its establishment, and the lower limitation can go back to the end of 2015. But according to the need, part of the content has broken through the limitation and traced to the origin of things. While, part of the content extends to August 2016, and it is attached to the Appendix. The upper limitation of the towns and the fields can go back to the year of its establishment, but it can also be traced back to the beginning of things, and the lower limitation ended in 2015.

III. 《Xianghai Chorography》 mainly includes towns, fields and villages in Xianghai. There are fourteen chapters (eighty—nine sections): Natural Environment, Historical Evolution, Wetland Resource, Wild Animal and Plant, Scientific Research and Popular Science, Resource Protection, Planning and Construction, Comprehensive Management, Ecotourism, Population, Nation and Religion, Site and Cultural Relic, Culture and Art,



Figures in Xianghai and Introduction to the Resident Agencies. The design of the content, not only inherits tradition, but also strives to innovate, and not only conforms to the requirements of annals, but also breaks through the formalities.

IV.The book begins with 《Overview》, and it sums up the whole thing, revealing the internal law, while the 《Memorabilia》 makes it an end by the combination of chronicle and history presented in the separate accounts of important events, describing the events and new things after the establishment of Xianghai Nature Reserve, and the method is inter-related to the contents of each chapter to reflect the whole process of the development of things.

V.In this book, the special examples are classified, and the structure is in horizontal and vertical writing. The whole book is made of chapters, sections and items (some chapters include sub-items) and adopts records, notes, biographies, graphs, tables ect .The text adopts the standard style of writing, and strive to be simple, concise, popular and smooth.

VI.The book follows the principle that is no biography for the living and the people passed away can have it. For the living, they can be connected with somethings, describing them through profile, and the advanced model figures are set by figure- recording.

VII.As far as the way of esignatint years is concerned, before the revolution of 1911 , the book makes use of the way of dynastic calendar with A.D in brackets as explanatory note and after the revolution of 1911 it uses A.D with dynasty and name of the reigning dynasty in brackets as explanatory



note. In the period of the fall of Northeast China (September 18, 1931 to August 15, 1945) the book adopts Minguo reign title with A.D in brackets as explanatory note, (no Japanese puppet regime reign title) and the year after liberation refers to the establishment of Kaitong people' s democratic government in January, 25 1946. And the founding of new China refers to the establishment of People' s Republic of China on October 1, 1949.

VIII. The numbers in the book are subject to the figures in Government Statistics Department, if the statistical departments did not make statistics, they are based on the statistical records in some industries and departments. The resources of animals and plants and all kinds of numbers are provided by Xianghai National Reserve. The data of the twelve administrative villages and thirty-two natural villages in Xianghai Natureal Reserve can not be equal to us because of the change of division, so we don' t change the data and use the original ones.

IX. The units of the measurement in the book are based on the state legal standard units, and the field area is based on the standard of square kilometers, and the area of the earth is based on the standard of hectare.

X. Data used in this book include the historical data, the names, places, dates, data, and other citations provided by the relevant departments, or by writer' s collecting and collating, and they are verified, but generally speaking, we do not indicate the source.

XI. For the need of description or reference, part of the contents refer to the whole county of Tongyu and the towns, fields around Xianghai Nature

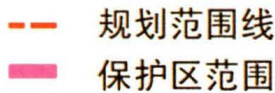
Reserve in order to reflect the mutual penetration and influence.

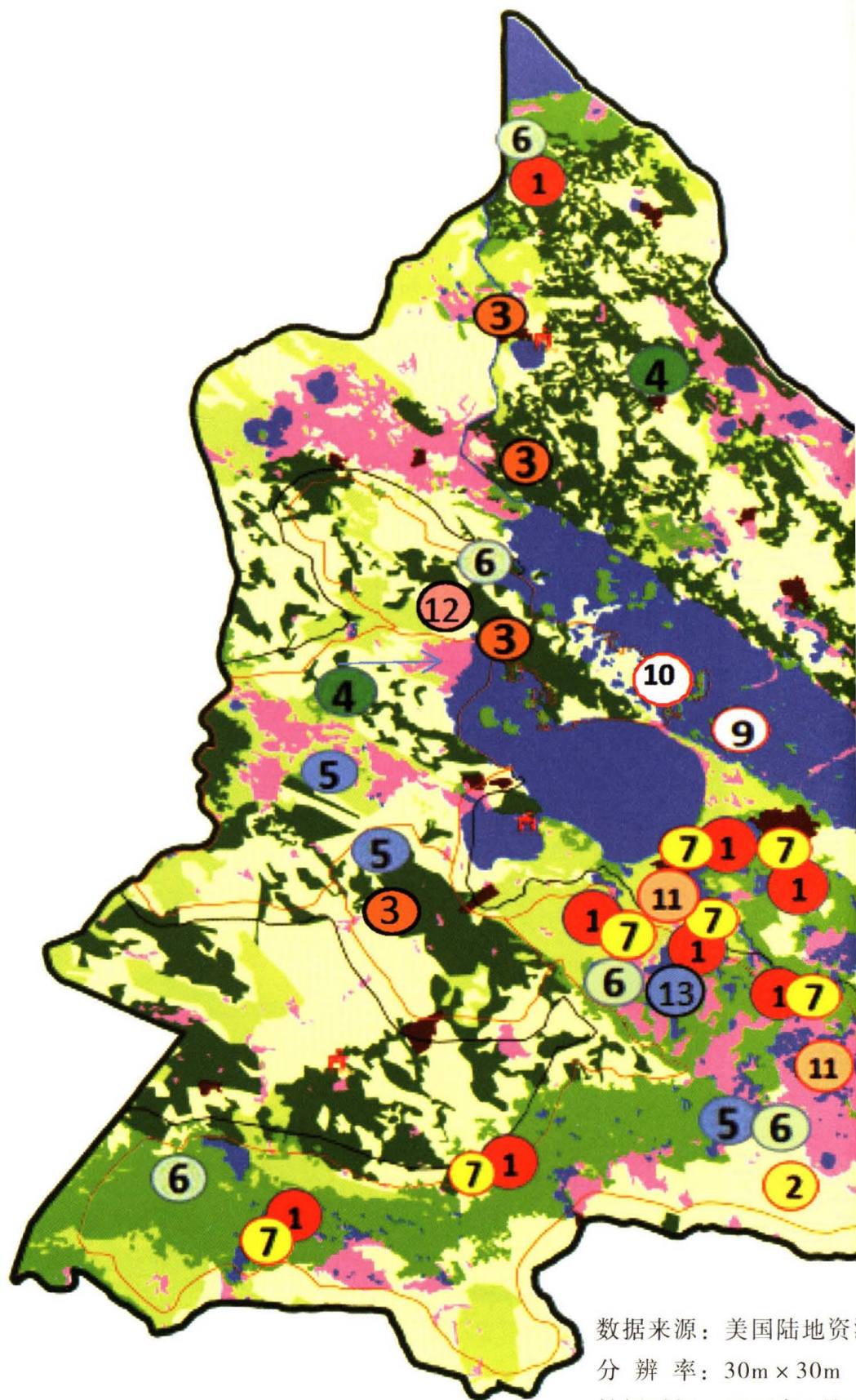
XII.The ink, painting, photography, paper cutting and other works in this book are provided by the Propaganda Department of Tongyu County, Tongyu County Tourism Bureau, and Bureau of Xianghai Nature Reserve of Jilin Province, (Management Bureau of Xianghai for Short) . And other proeses are cited from Xinhua Daily Telegraph, Jilin Daily, Baicheng Daily or by the author himself , they are signed by names, but we do not contact the authors, please forgive us.



秋收忙 (王宝中 摄)

1





数据来源：美国陆地资源调查局
分辨率：30m × 30m
拍摄时间：2013年9月1日

吉林向海国家级自然保护区 水鸟分布示意图

- | | |
|---------|----------|
| ①丹顶鹤繁殖区 | ⑧白头鹤栖息地 |
| ②白鹤 | ⑨鸕鹚 |
| ③隼形目繁殖区 | ⑩鸽形目繁殖 |
| ④大鸨繁殖区 | ⑪白琵鹭 |
| ⑤灰鹤 | ⑫东方白鹳繁殖区 |
| ⑥雁鸭类 | ⑬天鹅栖息地 |
| ⑦白枕鹤繁殖区 | |

