

014170

新疆维吾尔自治区地方志丛书

塔里木石油志

Tarim Petroleum Annals



塔里木石油勘探开发指挥部
新疆石油管理局塔西南勘探开发公司^编

新疆维吾尔自治区地方志丛书

塔里木石油志

下 册

主 编 殷俊杰 副主编 马富岑
责任副主编 樊途祥 李明坤

175
塔里木石油勘探开发指挥部 编
新疆石油管理局塔西南勘探开发公司

1977年，石油职工与当地驻军共同
治理柯1井井喷
Oil workers stopped blowout of Ke
No.1 well with the troops stationed in
the locality.



1990年甲乙双方共同治理轮南22井
井喷
Part A (TPEDB) stopping blowout of
Lunnan No.22 well with Part B (the
other unih).

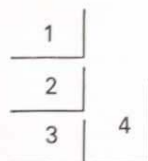
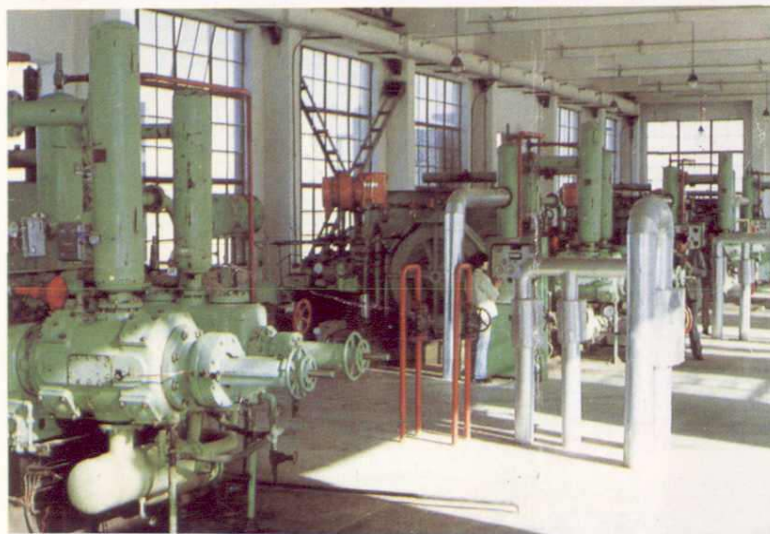


轮南57井井喷抢险人员(左1张仲
琨、右2钟树涛、右1杜成武)
The scene of rushing to deal with the
Lunnan No.57 well blowout



油田开发与集输

Oil field Development, Gathering and Transferring



- 1 柯克亚油气田集输联合站
(Gathering joint station of kekeya oil-gas field.)
- 2 柯一泽输气管线末站
The final station of Kekeya-Zhepu oil-gas line.
- 3 柯克亚油气田油井数据自动化采集传递
The oil well automatic gathering and delivering system of kekeya oil-gas field.
- 4 柯一泽输气管线施工现场
The constructing scene of Kekeya-zhe pu oil-gas conveying line.



东河塘油田自动化管理
主控室

The automatic management
main controlling
room in Donghetang oil
field.

东河塘油田联合站注水系统
Water injection system of the Donghetang
oil field joint station.



桑塔木油田集油站
Oil gathering station of shangtamou oilfield.





1991年1月1日，塔里木首列原油外运

It's the first time that Tarim crude oil was transported out of the basin by train on January the first 1991

单井高架装油罐集油装置

Single-well overhead shipping tank oil gathering installation.



轮南油田试采井标准化井场管理现场考核

Spot examination on standardization well site management in Lunan oil field.



轮南油田 100 万吨产能建设第一期工程竣工

The first project of 1000000 Ton productivity construction in Lunnan oil field was completed.



轮南油田自动化采集控制中心

The automatic gathering controlling centre in Lunnan oil field.



agement of test production



轮南油田联合站一角

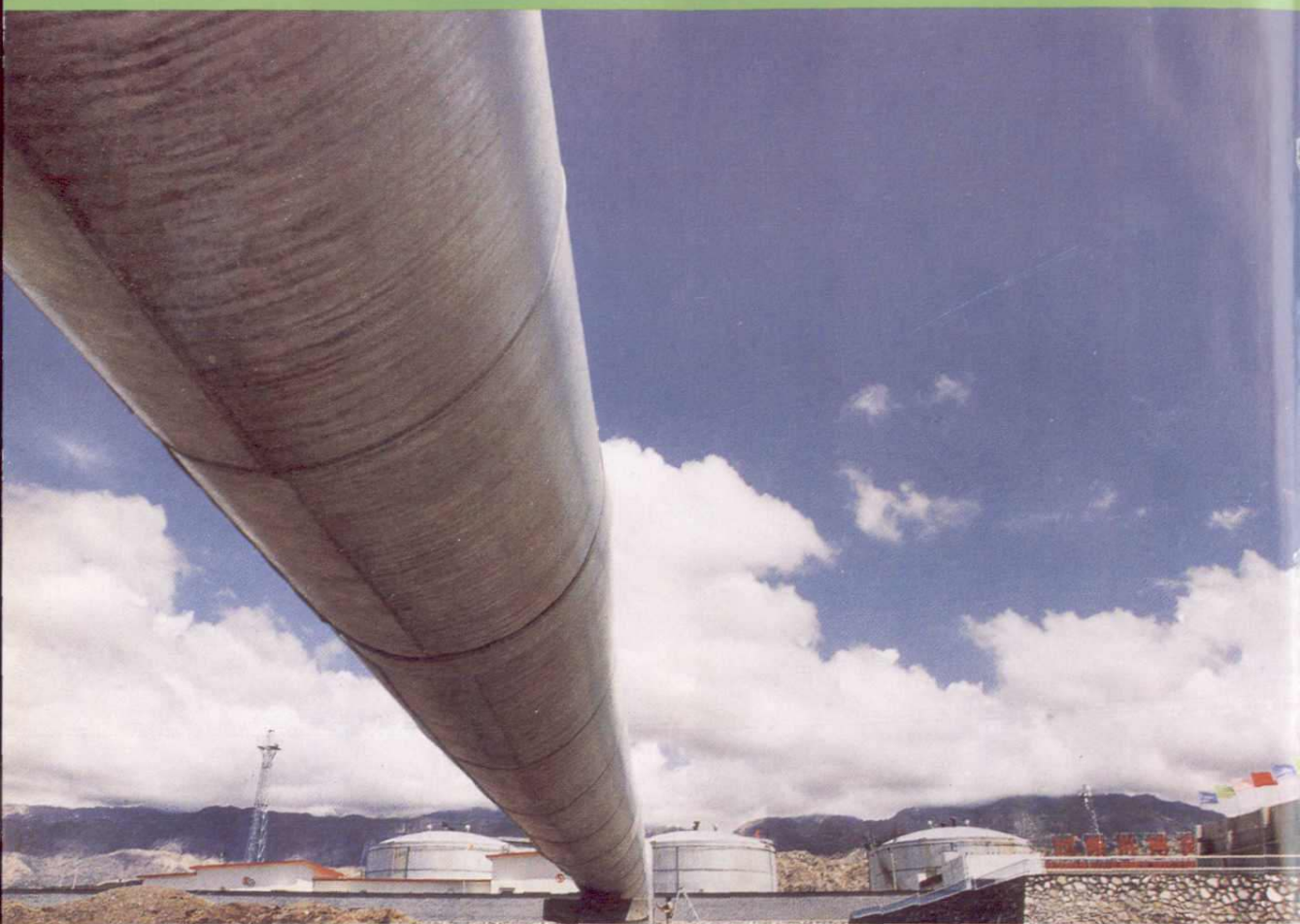
A corner of Lunnan oilfield joint station.



4

油田开发与集输

Oil field Development, Gathering and Transferring



4	5
	1
3	2





4 库尔勒末站输油管线

The oil transferring line in kurle final station.

5 1991年7月2日, 轮一库管线破土动工

Lunnan-Kurle oil line began to constructed on July the 2nd 1991.

1 轮一库管线施工现场

The construction scene of Lunnan-Kurle oil line.

2 库尔勒输油末站

The final station of Lunnan-Kurle oil line.

3 轮南油田集输联合站

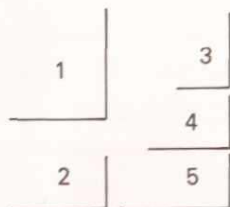
The gathering and transferring joint station in Lunnan oilfield



油田开发与集输

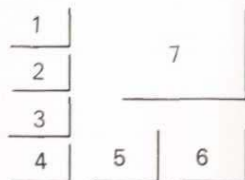
Oil field Development, Gathering and Transferring





- 1 1992年7月, 轮一库管线竣工剪彩
Cutting the ribbons at the Lunnan-Kurle oil line completing ceremony in July 1992.
- 2 1992年7月1日12时, 轮南首站调度室下达输油令
The dispatcher of the Lunnan first station gave an order to transfer oil at 12 O'clock on July the first 1992.
- 5 油头到达库尔勒末站
The head of tender came to the Kurle final station.
- 4 库尔勒火车西站装油鹤位
The loading arms in kurle west railway station.
- 3 轮一库管线库尔楚输油站
The kurchu transferring station on the Lunnan-Kurle oil line.





3 塔里木指挥部领导到沙漠公路现场办公
Leaders from TPEDB came to desert spot to handle officla business

7 塔克拉玛干沙漠公路
The desert road in Taklimakan.

2 沙漠探路队员宿营
The way-explorers' style of taking up quarters in desert

4 沙漠公路两旁的防沙护路措施
Sand proof and road-garding measures along the two sides of decert road.

5 塔里木河钢铁舟桥
Steel-boat bridge across the Tarim river.

6 沙漠石油2公里试验段竣工
The 2km experimental section of the desert-petroleum road was completed.

1 沙漠中推路基
Constructing road bed in desert.







轮南联合站燃气发电站高压室
Hyperbaric chamber of gas generator centre in Lunnan joint station.



轮南油田轻烃站液氮储罐群
Liquid-nitrogen storage-tanks in lighter hydrocarbons station of Lunnan oilfield.



轮南 20 万吨轻烃站一角
A corner of 200,000 Ton lighter hydrocarbons station in Lunnan oilfield.



东河塘油田作业区公寓
The compartment houses in Donghetang oilfield operation area.

塔里木指挥部科技大楼
The Scientific and technological re-
search building of TPEDB



塔里木指挥部大二线生产基地





中石油股份公司喀什钻井处旧址
The site of Kashi drilling department of the China and the former soviet Union Oil company.



1985年建的塔西南公司办公楼
The office building of the South-west Tarim company which was built in 1985.



1981年前，塔西南石油会战职工住的帐篷
The tents which were lived in before 1981 by the south-west Tarim petroleum battle workers.



1985年修建的泽普石油基地宾馆
Zhepu oil base hotel built in 1985.





库尔勒市新城区物探三处基地
The No.3 department base of the Geophysical Bureau in xincheng area

泽普石油基地
The Zhepu oil base.

