

文	农
物	安
志	县



农安县文物志

吉林省文物志编委会编

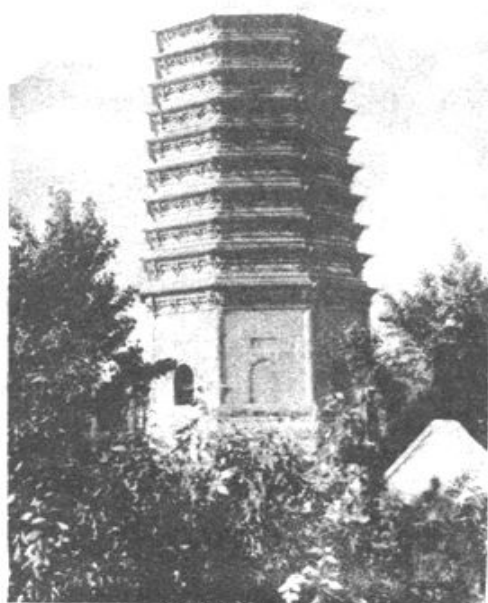
一九八六年十月

《农安县文物志》

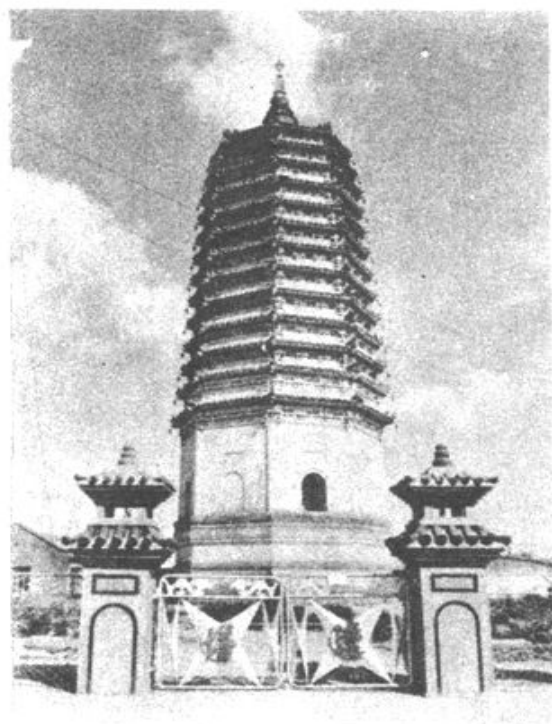
图 版



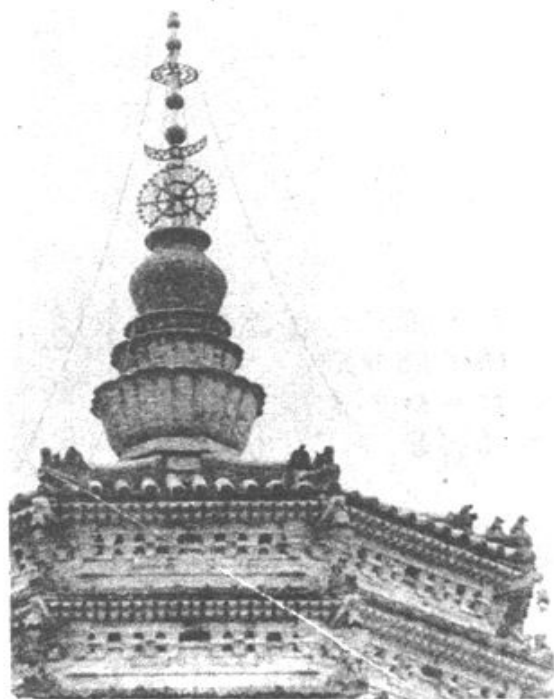
1953年维修前的辽塔



1983年维修前的辽塔



1983年复修后的辽塔

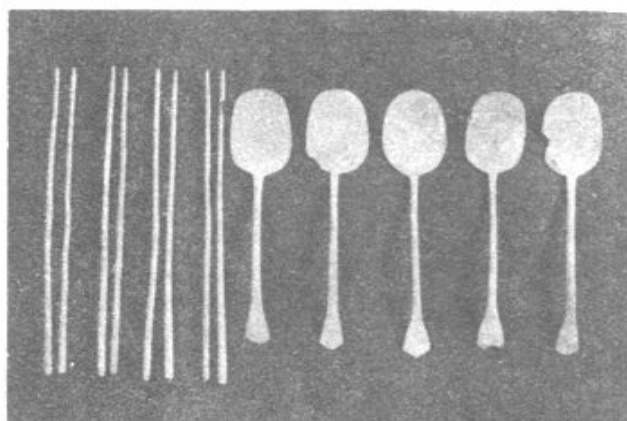


塔刹

图版贰

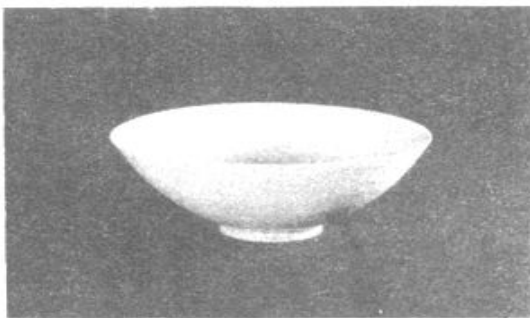
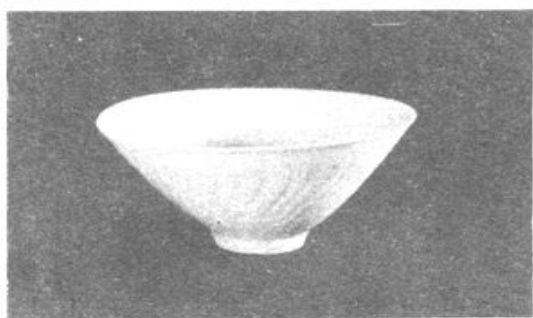
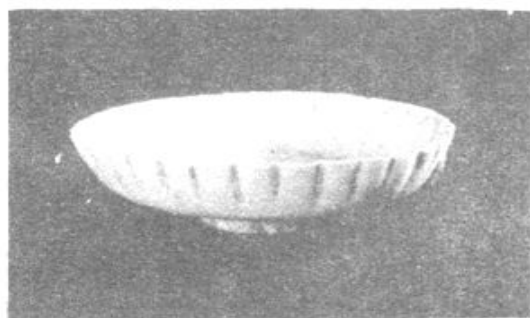
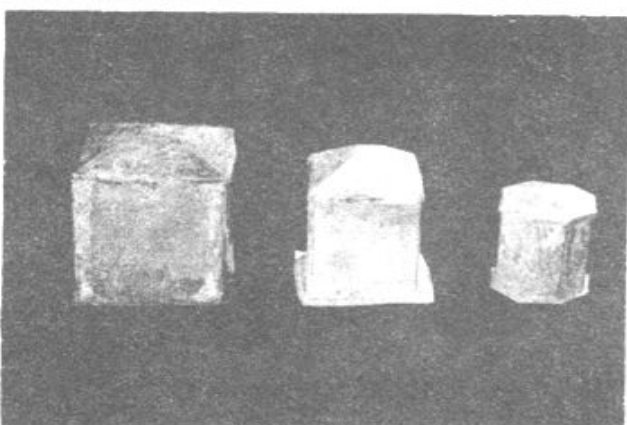


1. 农安镇烈士纪念塔 1 | 3
2. 杨珍的双脚 2 | 4
3. 农安镇烈士墓
4. 韩清泉用过的子弹袋和公文包



1	4
2	5
3	6
	7

1. 石塔
2. 薄铁阁
3. 瓷碗
4. 铜箸、铜匙
5. 舍利盒
6. 瓷碗
7. 瓷碗



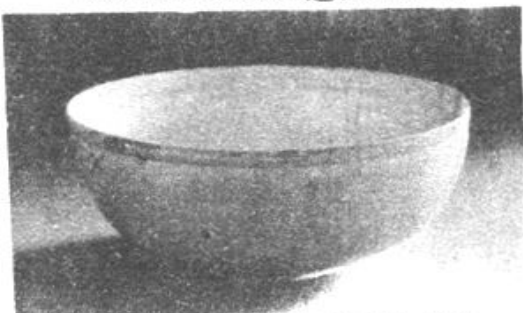
图版肆



1. 绿釉铺首兽足鼎



2. 定窑白釉刻花莲瓣鱼纹钵



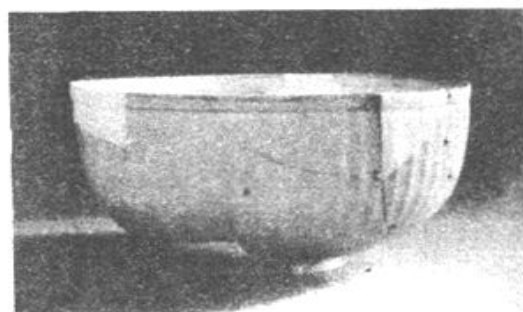
3. 定窑白釉刻花水草双鱼纹钵



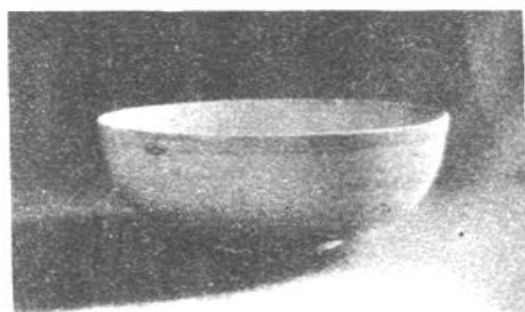
4. 定窑白釉刻花莲瓣荷花纹钵



5. 石竹纹影青执壶



6. 定窑白釉刻花荷花纹钵



7. 定窑白釉刻花荷花纹钵



赭石釉双耳小罐



黑釉小陶罐



赭石釉双板耳陶罐



黑釉陶罐

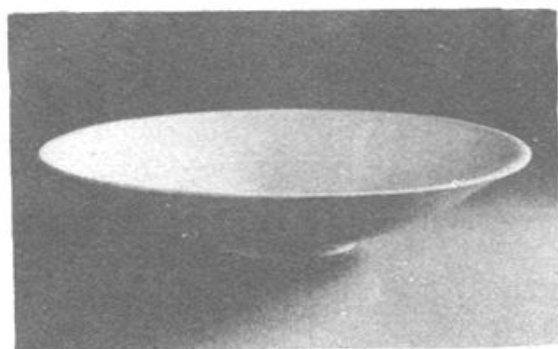


赭石釉陶瓮

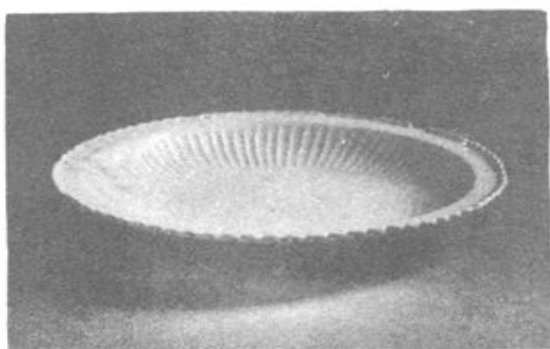


定窑素面白釉双系罐

图版陆



定窑白釉刻花龙纹盘



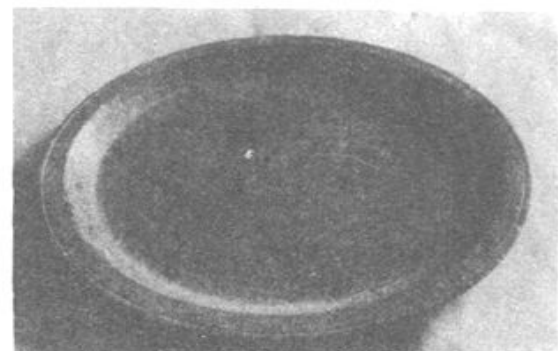
宝瓶莲花仙鹤纹盘



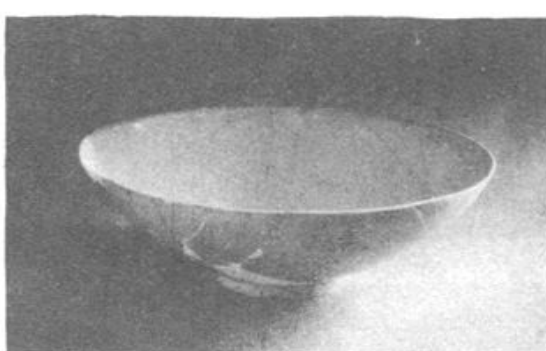
鹧鸪斑青玉盏



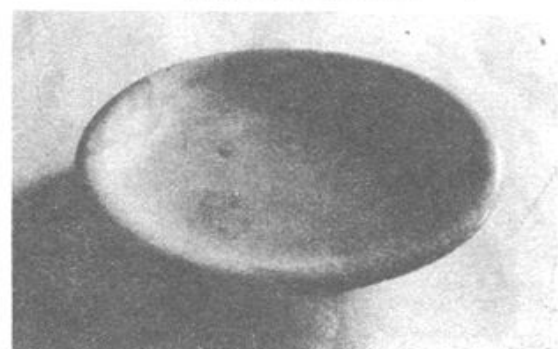
白釉素面小碗



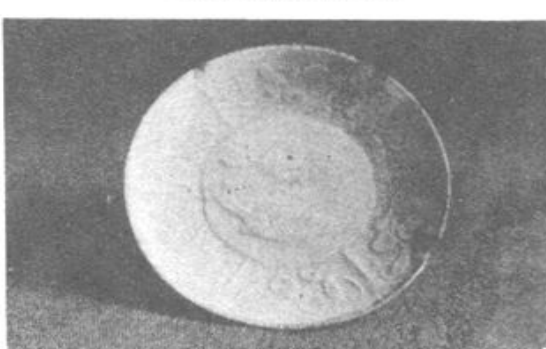
鹧鸪斑青玉盘



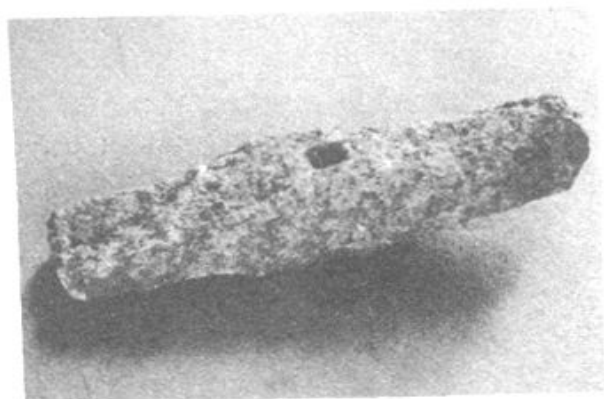
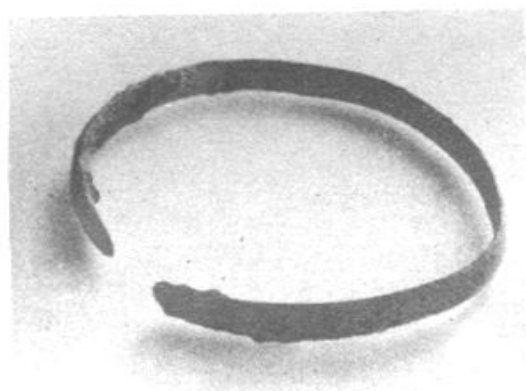
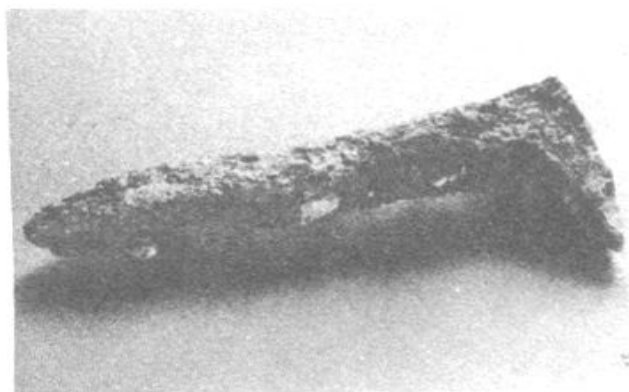
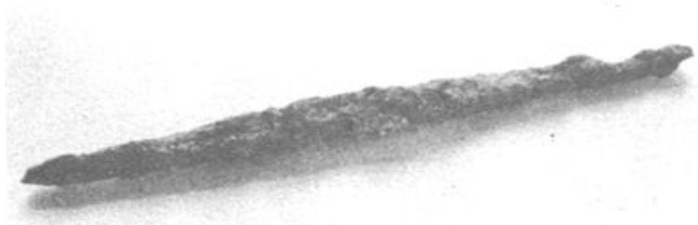
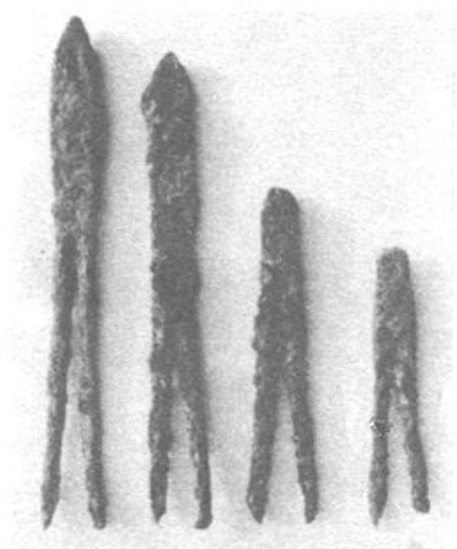
白釉素面大碗



钧窑素面小碟

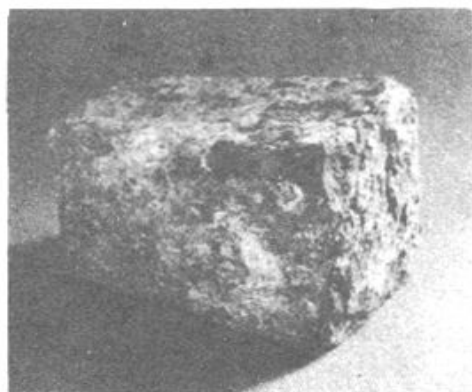


花卉双鱼纹小碟

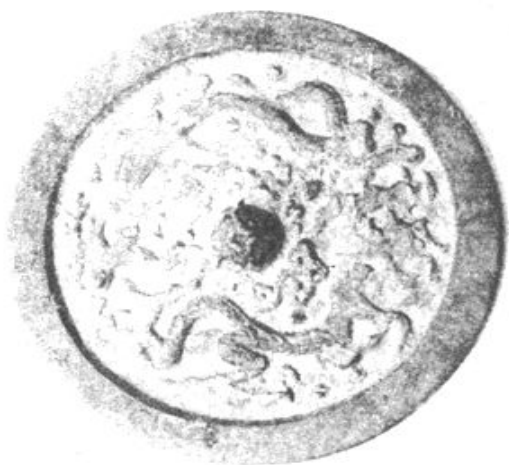


1	4
2	5
3	6
	7

1. 铁钳
2. 铜钎
3. 铁罐
4. 铁锉
5. 铁釜
6. 铁锤
7. 铁砧



图版捌



- | | |
|---|---|
| 1 | 4 |
| 2 | 5 |
| 3 | 6 |
1. 二龙戏珠镜
2. 星宿生肖带柄铜镜
3. 瑞禽花草镜
4. 风景人物镜
5. 六耳铁锅
6. 双鱼戏水镜



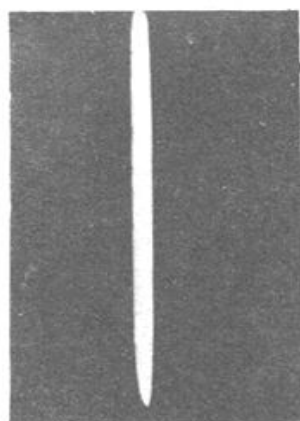


1	2	
3	4	
5	6	7

1. 铜罍
2. 柳毅传书铜镜
3. 铁壶
4. 飞蝶花卉方形镜
5. 玉壶春铜瓶
6. 7. 生肖时辰铜牌正、背面

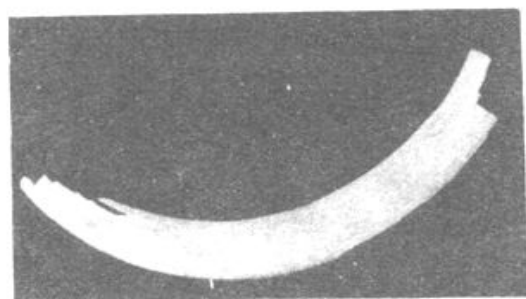
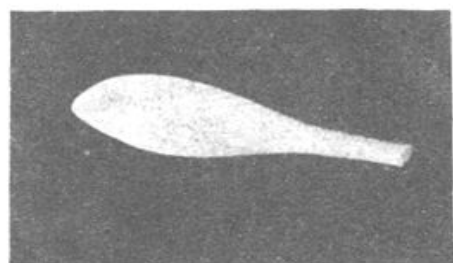


图版拾



1	2
3	4
5	6
7	8

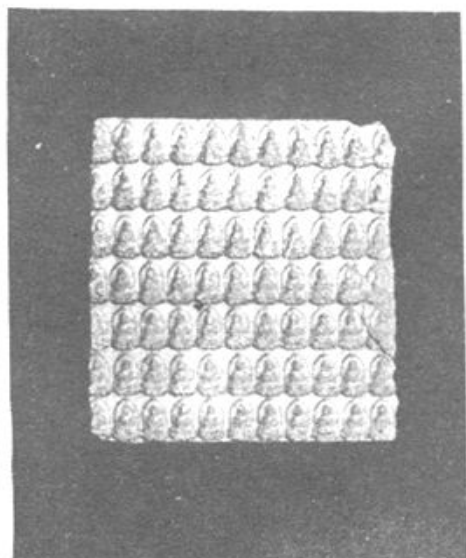
1. 骨刻刀
2. 猛犸象骨化石
3. 骨匕
4. 猛犸象臼齿化石
5. 猛犸象门齿化石
6. 石臼
7. 双耳陶罐
8. 陶塑佛像



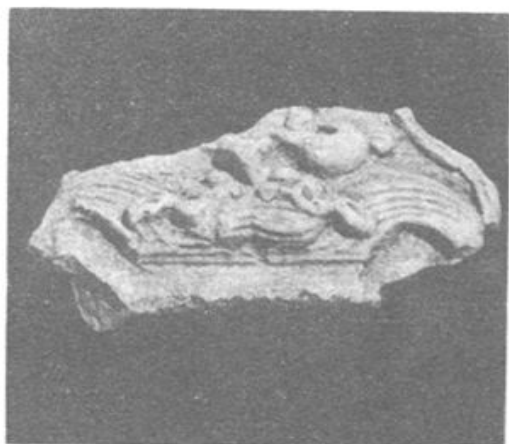
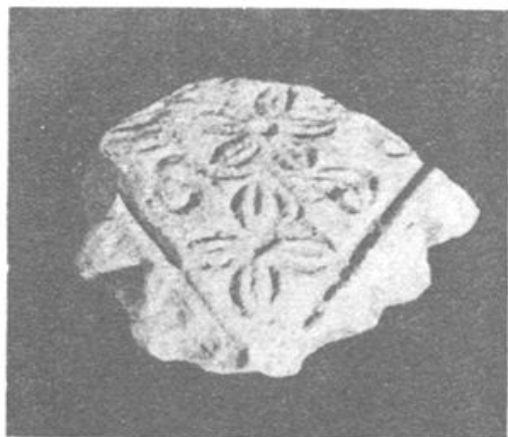


1. 释迦牟尼佛
2. 观音菩萨
3. 鎏金牌饰
4. 瓷香炉
5. 搅袖瓷盒

1	2
3	4
	5



图版拾贰



1	2
3	4
5	

- 1.2. 建筑饰件
3. 王字瓦当
4. 猴面瓦当
5. 莲花瓦当

《农安县文物志》编写组成员

赵清俊	榆树县博物馆
刘景先	文化馆离休干部
吴克	农安县文化局
张发	农安县文化局
姚凤英	农安县文物管理所
费晓军	农安县文物管理所
吴铁军	农安县文物管理所

方起东

审 订

长春市编写文物志

领导小组成员

组 长：杨 迪

副 组 长：赵德让

成 员：赵 贵

葛德春

王业钧

孙启彦

王伟森

李新生

刘广志