

克东县志

(1986~2005)

Kedong County
Annals



黑龙江人民出版社

克东县志

(1986~2005)

黑龙江人民出版社

谨以此书向
中国共产党成立九十周年献礼

克东县地方志编纂委员会

克东县地方志编纂委员会

主任 董颖秋
副主任 (按姓氏笔画为序)
朱晓红 李 伟 杨国君 张守春
林 洲 商海燕
委员 (按姓氏笔画为序)
田文斌 石相全 安晓东 刘秀峰
刘忠富 闫太勇 李 军 李 强
李东阳 李时浩 陈德君 宋殿华
张广文 张玉宝 张守君 张俊辉
张景文 邹德玉 周士吉 胡树华
姚 强 郭宏志 龚洪伟 程春学
韩 光 韩明新 魏学兵

《克东县志》编纂人员

主 编 张玉宝
副主编 窦彦江 范道国
编 辑 (按姓氏笔画为序)
王 贺 刘金福 李宝森 杨春啸
张玉宝 范道国 窦彦江
见习编辑 刘会艳 苗 帅 周子君
校 对 范道国 窦彦江 李宝森 田宇波
摄 影 于全胜 赵永志 尹树斌 兰花照相馆

《克东县志》审定人员

齐齐哈尔市地方志办公室 王 奎 侯建春 温向前

克东县地方志编纂委员会

主任 董颖秋
副主任 (按姓氏笔画为序)
朱晓红 李 伟 杨国君 张守春
林 洲 商海燕
委员 (按姓氏笔画为序)
田文斌 石相全 安晓东 刘秀峰
刘忠富 闫太勇 李 军 李 强
李东阳 李时浩 陈德君 宋殿华
张广文 张玉宝 张守君 张俊辉
张景文 邹德玉 周士吉 胡树华
姚 强 郭宏志 龚洪伟 程春学
韩 光 韩明新 魏学兵

《克东县志》编纂人员

主 编 张玉宝
副主编 窦彦江 范道国
编 辑 (按姓氏笔画为序)
王 贺 刘金福 李宝森 杨春啸
张玉宝 范道国 窦彦江
见习编辑 刘会艳 苗 帅 周子君
校 对 范道国 窦彦江 李宝森 田宇波
摄 影 于全胜 赵永志 尹树斌 兰花照相馆

《克东县志》审定人员

齐齐哈尔市地方志办公室 王 奎 侯建春 温向前

克东县地方志编纂委员会

主任 董颖秋
副主任 (按姓氏笔画为序)
朱晓红 李 伟 杨国君 张守春
林 洲 商海燕
委员 (按姓氏笔画为序)
田文斌 石相全 安晓东 刘秀峰
刘忠富 闫太勇 李 军 李 强
李东阳 李时浩 陈德君 宋殿华
张广文 张玉宝 张守君 张俊辉
张景文 邹德玉 周士吉 胡树华
姚 强 郭宏志 龚洪伟 程春学
韩 光 韩明新 魏学兵

《克东县志》编纂人员

主 编 张玉宝
副主编 窦彦江 范道国
编 辑 (按姓氏笔画为序)
王 贺 刘金福 李宝森 杨春啸
张玉宝 范道国 窦彦江
见习编辑 刘会艳 苗 帅 周子君
校 对 范道国 窦彦江 李宝森 田宇波
摄 影 于全胜 赵永志 尹树斌 兰花照相馆

《克东县志》审定人员

齐齐哈尔市地方志办公室 王 奎 侯建春 温向前

序

盛世修志，志铭盛事。新编《克东县志》全体编纂人员充分借鉴前人的修志经验，以新观点、新视角、新方法，广征博采，集萃扬菁，历时四载，五易其稿，编纂出第二部具有现实意义和地域特色的克东县新志书。

新编的第二部《克东县志》记录了1986~2005年20年间，克东县在政治、经济、军事、文化、社会、自然等方面的发展变化和历史轨迹。再现了改革开放以来，克东县委、县政府在中央和省市的领导下，以科学发展观为统领，以加快县域经济发展和改善人民群众生活为己任，组织和带领全县人民坚持解放思想，与时俱进，锐意创新，取得了“三农”工作全面发展、工业立县步伐加快、城乡建设日新月异、商贸流通趋渐活跃、文化建设彰显特色、人民生活更加幸福的辉煌业绩。《克东县志》是克东县新时期一部“资政、教化、存史”的百科全书，必将成为克东今后经济发展和社会进步的有益借鉴，必将进一步激发克东人民热爱家乡、奉献家乡、建设家乡的责任心和使命感。

在续志编纂过程中，得到了省、市地方志办以及兄弟市县区志办领导、专家的关怀和指导，得益于全县社会各界的鼎力支持和全体编纂人员夜以继日的辛勤工作。在此，我代表克东县志编纂委员会对所有为《克东县志》编纂工作给予支持和做出贡献的同志们表示衷心的感谢！

回顾过去，深感创业艰辛；展望未来，倍感任重道远。我到克东工作7年来，与全县人民共同见证了克东经济发展和社会进步的艰辛历程，适逢盛世修志，本人有幸组织并参与编纂第二部《克东县志》，续写克东历史，服务当代社会，实感荣幸之至。希望广大干部群众在今后的的工作中能够通读《克东县志》，用好《克东县志》，继承前人事业，勇于开拓创新，为建设更加富裕美好的新克东做出新的更大贡献！

克东县人民政府县长
克东县地方志编纂委员会主任

董毅

2010年11月14日

Preface

Annals are often compiled in good times to record prosperity. While Drawing upon the experience of past annals, compilers of the latest version of Ke Dong County Annals adopted new ideas, perspectives, and methods in collecting and sifting through extensive information. After five drafts over four years, this sequel with practical significance and regional characteristics is finally completed.

The sequel of Ke Dong County Annals records the development of Ke Dong County in political, economic, military, cultural, and social fields, and its changes in nature during the 20 years from 1986 to 2005. It documents the tremendous achievements of the County Party Committee and the County Government in accelerating economic development and improving people's living conditions since the adoption of the reform and opening-up policy, following the leadership of the central and provincial governments. The committee and government led the people in emancipating the mind and keeping abreast of the times. Thanks to these efforts, comprehensive achievement has been made in agriculture, developing the rural area and improving farmers' livelihood. Industry is growing to become a pillar of the county economy. New progress is being made in the development of urban areas. Businesses are flourishing. Regional characteristics of culture are highlighted. People are living a happier life. Ke Dong County Annals is a historical encyclopedia in Ke Dong County's new era. It is a valuable source for administration, education and historical information. It will be a good reference for the future economic development and social progress of Ke Dong County, and will boost Ke Dong people's sense of responsibility and mission in offering their love for and dedication to Ke Dong.

During the compiling of the sequel, we received help and support from officials and experts of the Provincial, Municipal and County Annals Offices and offices in sister cities and counties. We appreciate the support from the whole county and the compiling staff who have worked around the clock. On behalf of Ke Dong County Annals Compilation Committee, I would like to express my heartfelt thanks to all comrades for their support and contribution to the compilation of Ke Dong County Annals

Looking back, I cannot but say it has been a difficulty journey ; looking ahead, I am fully aware of my heavy responsibilities and the long way to go. In the past seven years of working in this county, I have witnessed, together with the people of the whole county, the challenging journey of economic development and social progress. I feel honored to be able to participate in the compilation of the sequel of Ke Dong County Annals annals at this time of prosperity. It is a privilege to record history that is relevant for the future. I hope government officials and the general public can read and make good use of Ke Dong County Annals, carry forward the cause of our predecessors, and come up with greater innovations so as to make new and greater contribution to building a more affluent Ke Dong County.

Head of Ke Dong County People's Government
Director of Ke Dong Local Annals Compilation Committee
Yingqiu Dong
Nov. 14th 2010

凡 例

一、本志书为1987年新编《克东县志》的续志。时间断限为1986年至2005年，为保持记事的连续性和完整性，有些事实做了适当上溯。

二、本志书坚持以马克思列宁主义、毛泽东思想、邓小平理论和“三个代表”重要思想为指导，坚持辩证唯物主义和历史唯物主义的观点，坚持“实事求是、详今略古、宜粗不宜细、生不立传”的原则，秉笔直书，寓观点于记述之中，力求做到思想性、科学性和资料性的统一，写出时代精神，地方特点。

三、本志书采用编、章、节、目结构，志前设序言、凡例、概述、大事记，正文设概况、城乡建设、交通邮电、综合经济管理、农业、工业、商贸服务、财税金融、群众团体、军事政法、科技教育、文化体育、卫生医药、社会、附录等19编106章517节，志尾设人物、附录、索引、编后记，共计180万字。

四、本志书采取述、记、志、传、图、表、录7种体裁，以志为主，横排竖写。

五、本志书行文完全遵照黑志委发[2003]8号文件《黑龙江省地方志编纂行文通则》的规定，一律采用语体文、记述体，不用口头语、文言文或文白间杂。行文诸如标点符号、称谓、地名、纪年、名称、时间等力求准确，用词朴实、简洁。语言严格按照《国家通用语言文字法》的规定使用。用字以1955年《第一批异体字整理表》、1986年《简化字总表》、1988年《现代汉语通用字表》为依据。标点符号按照1995年新修订的《标点符号用法》进行。称谓一律用第三人称书写。

六、本志书使用数字的来源以县统计部门的数字为准，统计部门没有的数字，使用了主管业务部门提供的数字。均按1995年国家技术监督局发布的国家标准《出版物上数字用法的规定》使用。

七、入志人物以本籍为主，客籍为辅。坚持生不立传的原则，对在革命、建设和改革中有显著业绩，做出重大贡献已故者写传入志，按逝年为序；在世的人物以简介、名录或以事系人的形式入志，按生年为序；副高级以上职称以表格形式入志。

八、较繁琐的各种名称，第一次出现时用全称，如全称过长，在第一次出现时注明已经流行同时又不产生歧义的简称，再次出现时用简称。

九、本志书资料主要来源于各乡镇、县直各部门及中省直单位提供的专业志、资料长编、工作总结，同时参考了有关报刊、书籍。各种资料均经过编辑人员加工、考证、审核，选用时未一一注明出处。

Notes

1. This volume is the sequel of "Ke Dong County Annals" compiled in 1987. It records the events from 1986 to 2005. However, some earlier events are also alluded to in order to maintain the continuity and integrity of the records.

2. This volume reflects Marxism-Leninism, Mao Zedong Thought, Deng Xiaoping Theory and "Three Represents", follows dialectical materialism, historical materialism and the principles of "seeking truth from facts, prioritizing present events over historical ones, focusing on the larger picture instead of trivial details and not including a record of the living". This volume truly reflects the reality, argues by way of narration. It provokes thoughts, demonstrates a scientific attitude and informs the readership. It mirrors people's mentality of the times and the local characteristics.

3. This volume is structured into parts, chapters, section and subsections. In the beginning are preface, explanatory notes, overviews and memorabilia. The main body contains overviews, urban and rural development, transportation, post and telecommunications, comprehensive economic management, agriculture, industry, business services, finance and taxation, CPC Ke Dong County Local Organizations, Mass Organizations, Ke Dong County People's Congress, Ke Dong County People's Government, Ke Dong County CPPCC, military, politics and law, science and technology, education, culture, sports, healthcare and society. There are 19 parts, 106 chapters and 517 sections. The end of the annals contains figures, appendix, afterword, totaling 1.8 million words.

4. This volume uses seven kinds of genres, with narration as the dominant one. It is written vertically and typeset horizontally.

5. The writing style of these annals is in line with Document No. 8[2003] "Writing Style Rules for Annals of Heilongjiang Province" issued by the Annals Office of Heilongjiang Provincial Government. All the annals use plain modern Chinese without colloquial or classical literary language of writing or the mixing of classical and simplified Chinese. It is as accurate as possible in the use of punctuation, titles, names and dates. The language is simple and concise, following the rules of usage in National Common Language Law. The Chinese characters are used in the context of The First Dictionary of Chinese Character Variants compiled in 1955, Dictionary of Simplified Chinese Characters in 1986, and Dictionary of Modern Chinese Common Characters in 1988. The punctuation is in accordance with the Usage of Punctuation issued in 1995. All titles are used in the third person.

6. Statistics in the annals mainly come from the Ke Dong County Statistics Department. In the absence of that, figures from relevant authorities are used. All statistics are used in line with the national standard in laid out in the Usage of Statistics in Publications issued by the National Bureau of Technical Supervision.

7. Personages recorded in the annals are mainly from Ke Dong County, while some are from other regions. We have followed the principle that biographies of the living will not be included in the annals. The biographies of the deceased with significant contribution to revolution, reform and development are ordered by the year of death. The living personages are recorded with brief introductions, in name lists or in major events, ordered by the year of birth. Personages with high-level professional titles are introduced in the form of lists.

8. Complicated names appear in full at the first time. Acronyms are used for those that are too long and the popularly accepted unambiguous acronyms of which have been provided at the first time of appearance.

9. Information in the annals mainly comes from annals, archives and work reports of government departments at the township and county level, and relevant authorities at the provincial and national levels. We also referred newspapers, periodicals and books. The crude information were selected, verified and processed, so sources are not identified one by one.

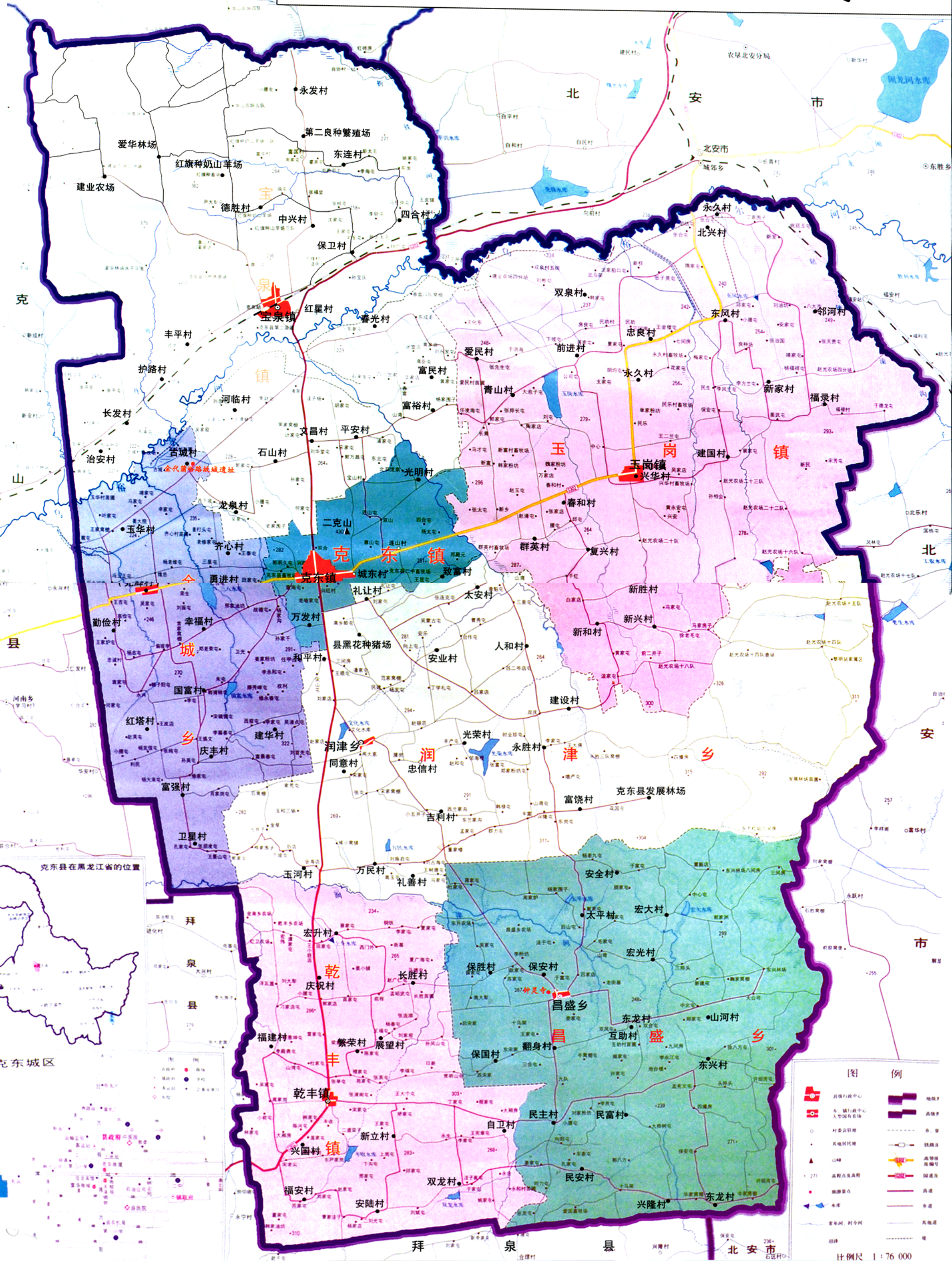


彩图专辑



克东县行政区划图

五大连池市



图例	
	县行政中心
	乡、镇行政中心
	村委会驻地
	其他居民地
	271 高程点及高程
	测井点
	常年河、时令河
	湖群
	地籍界
	县界
	乡、镇界
	铁路
	高等级公路
	国道
	省道
	乡道
	民便道
	堤

比例尺 1:76 000

县城全貌

XIANCHENGQUANMAO



KEDONGKIN Zn



KEDONGXIANZH



县委县政府大楼

领导视察



省委书记孙维本到克东视察



省委书记岳奇峰到克东视察



省长侯捷到克东视察春耕生产

KEDONGXIANZHI



省长邵奇惠到克东视察



副省长申立国到克东视察

市委书记杨信到克东飞鹤乳业调研

