

大理白族自治州
交通志



● 云南地方志丛书

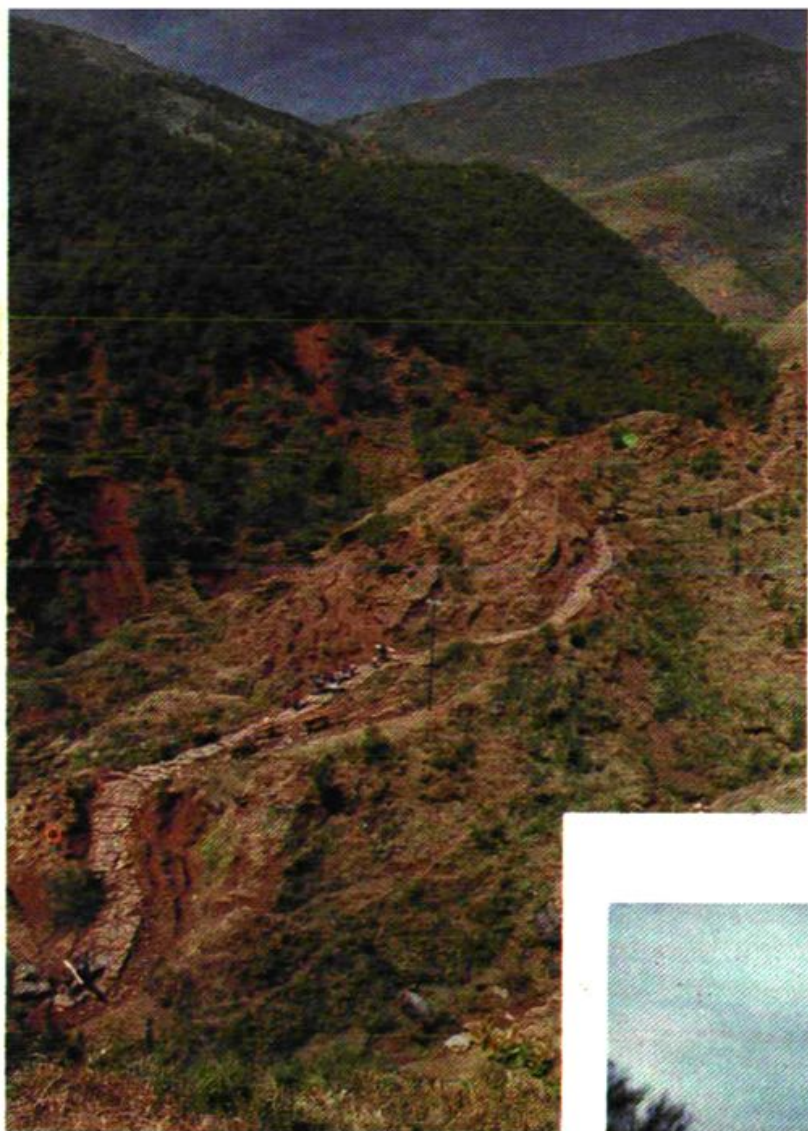
大理白族自治州

交通志

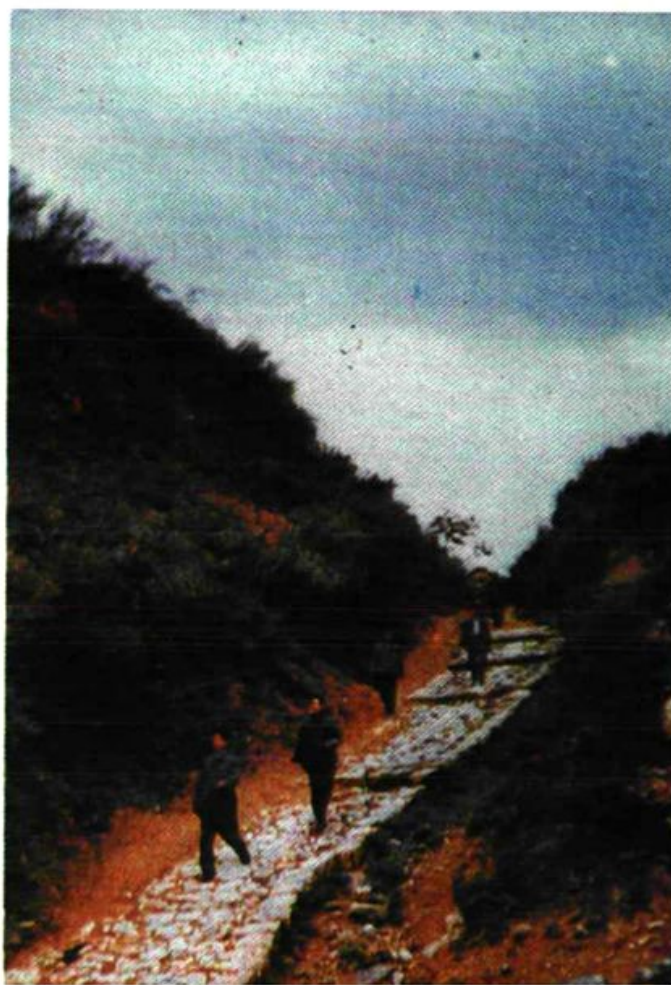
大理白族自治州交通局 编

云南人民出版社

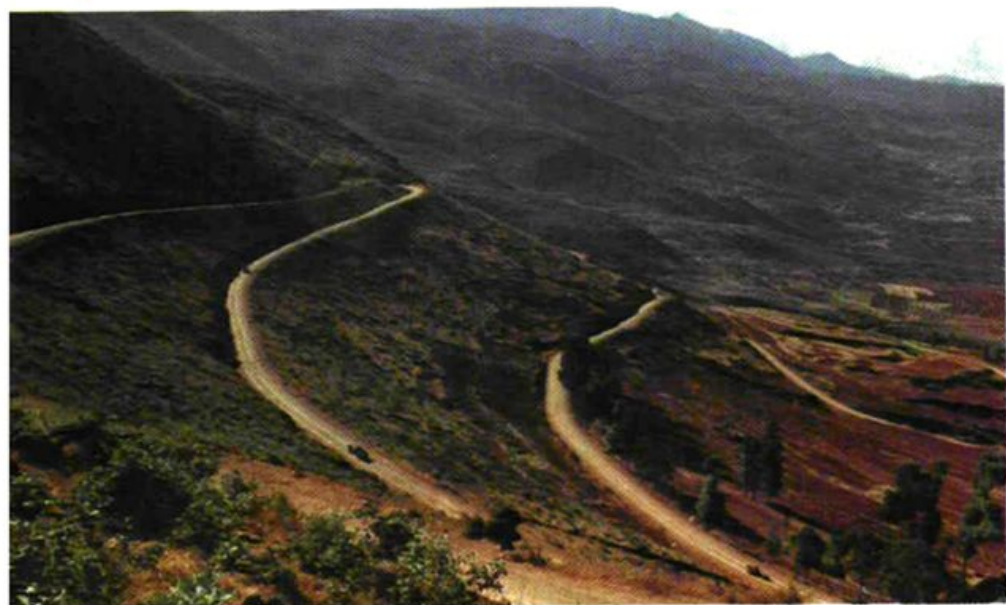
鹤庆城西箐驿道



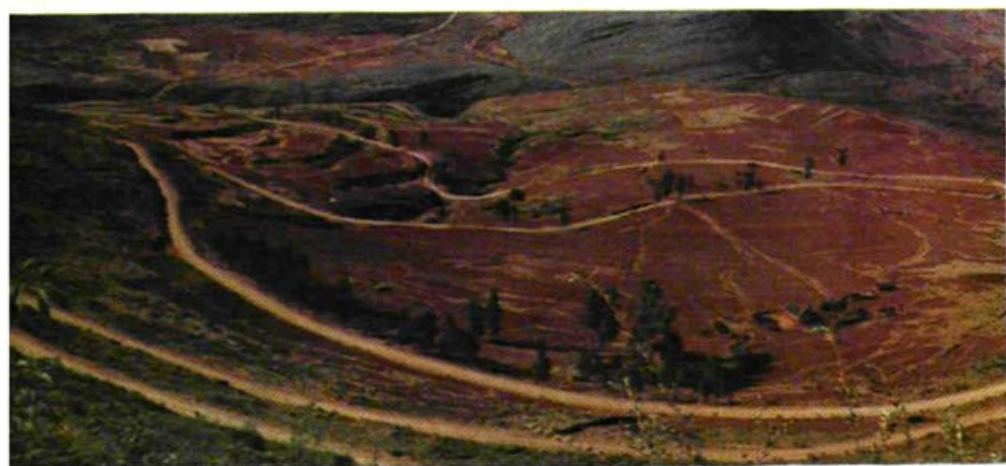
博南古道江顶寺一段

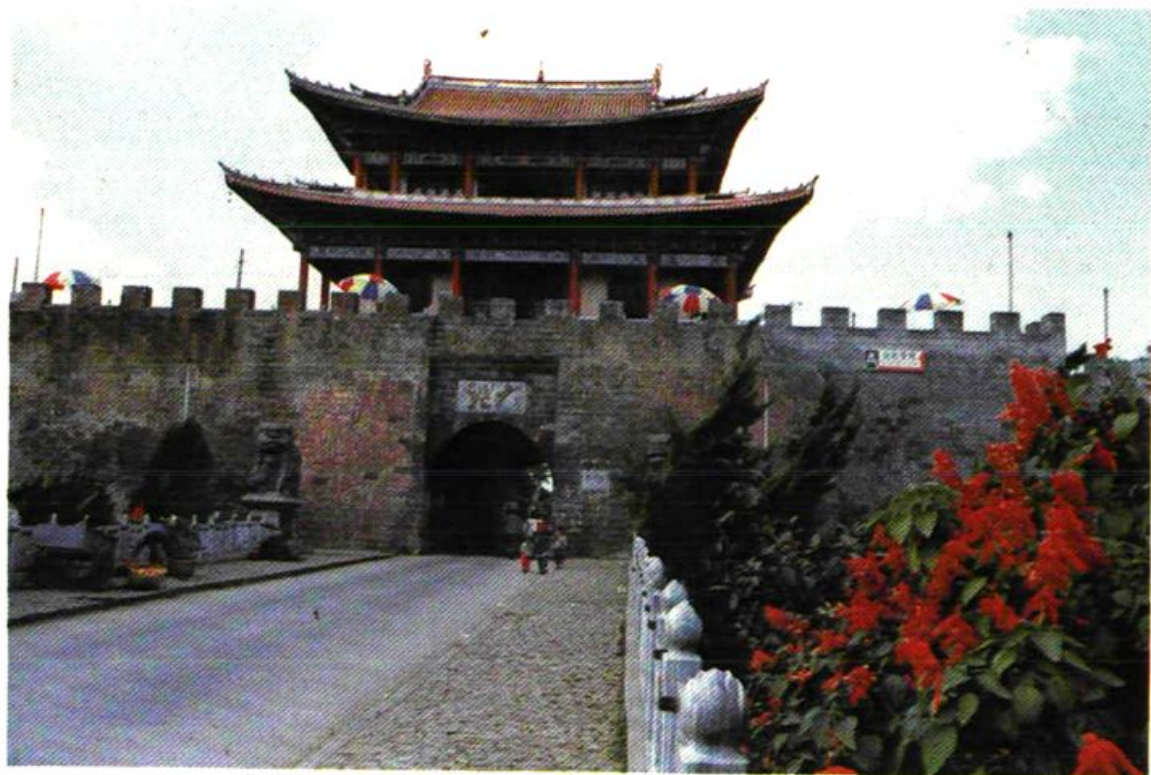


昆畹线盘山公路

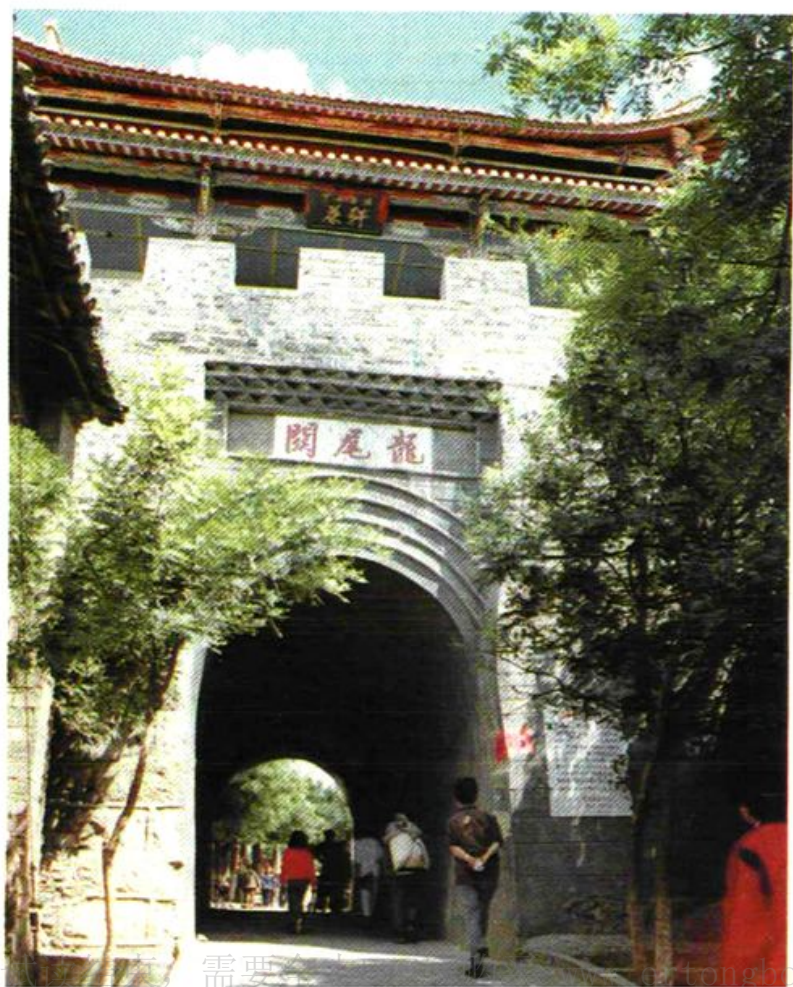


邓丽线盘山公路

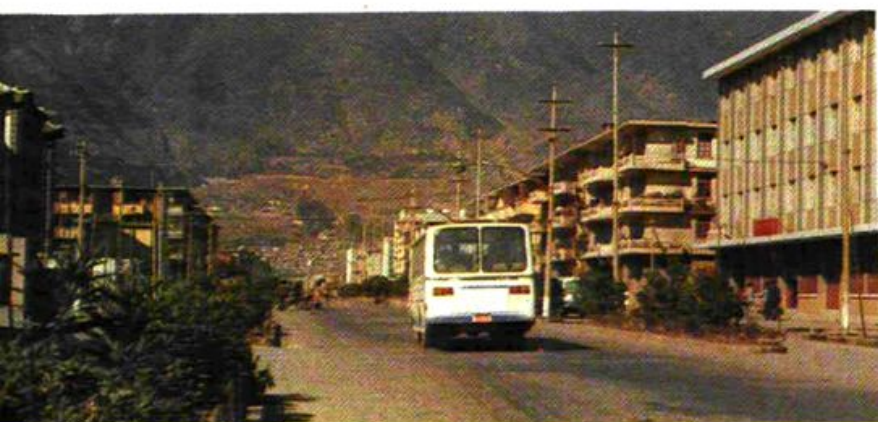
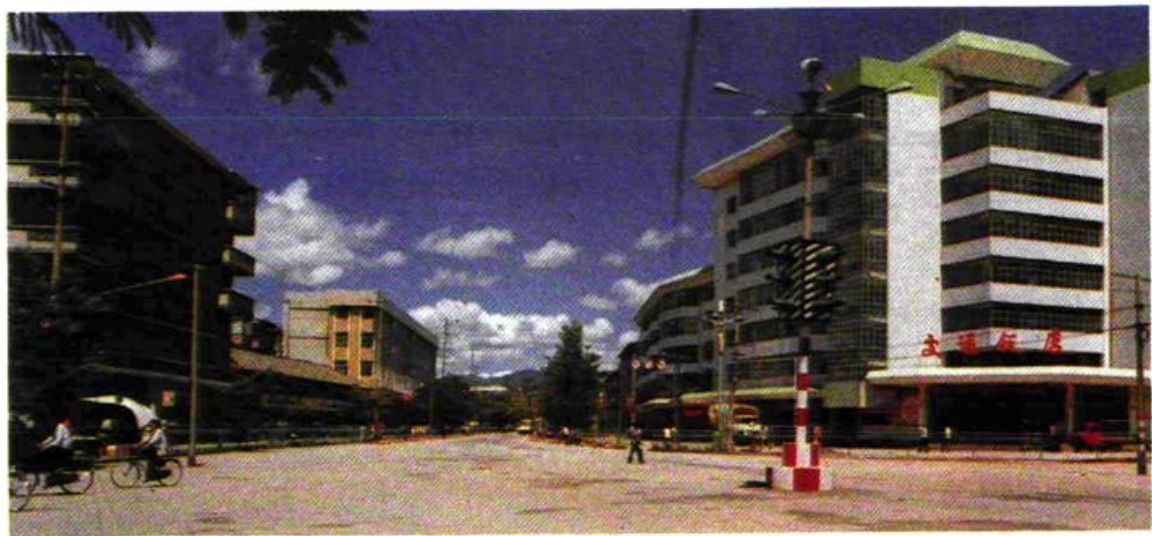




↑ 大理城

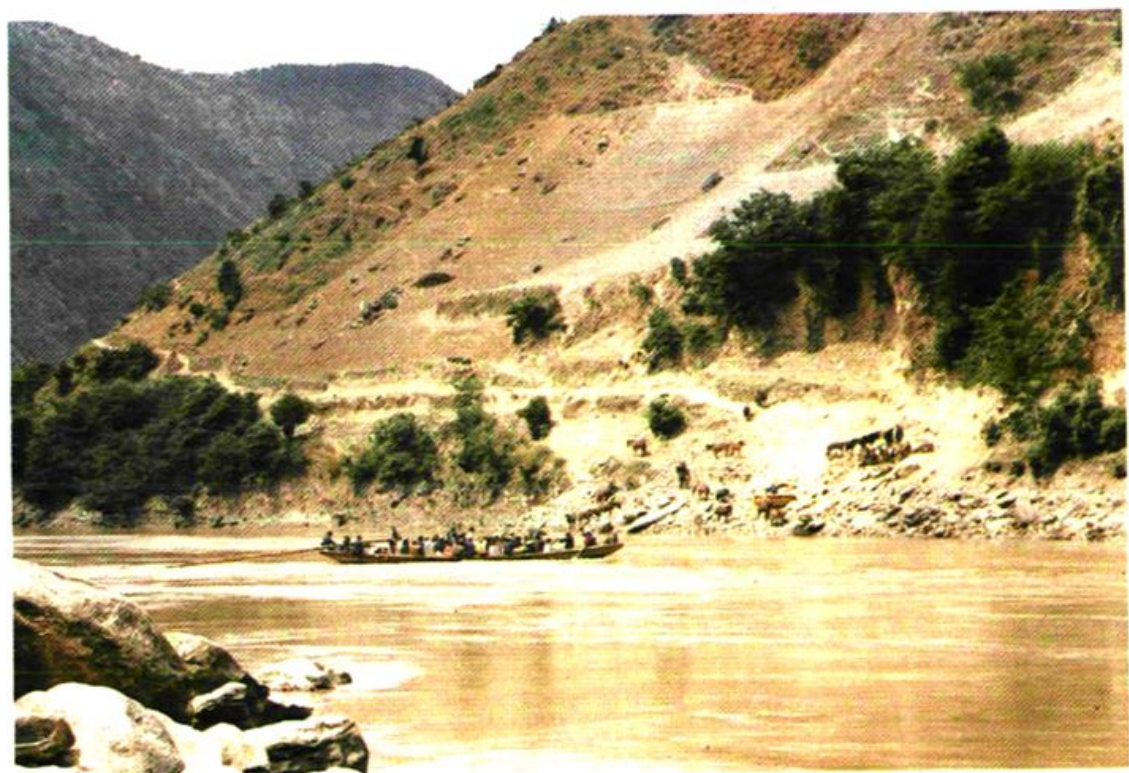


← 龙尾关



下关街道





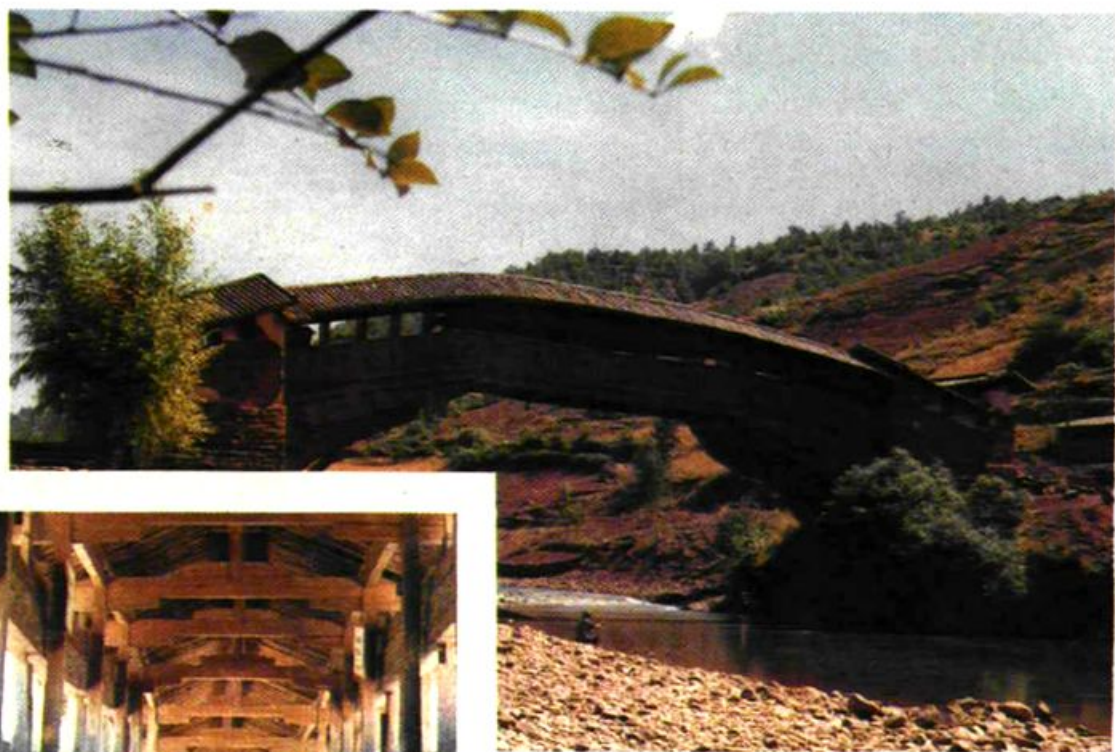
↑ 澜沧江云龙汤洞渡口

↓ 云龙白石乡藤桥





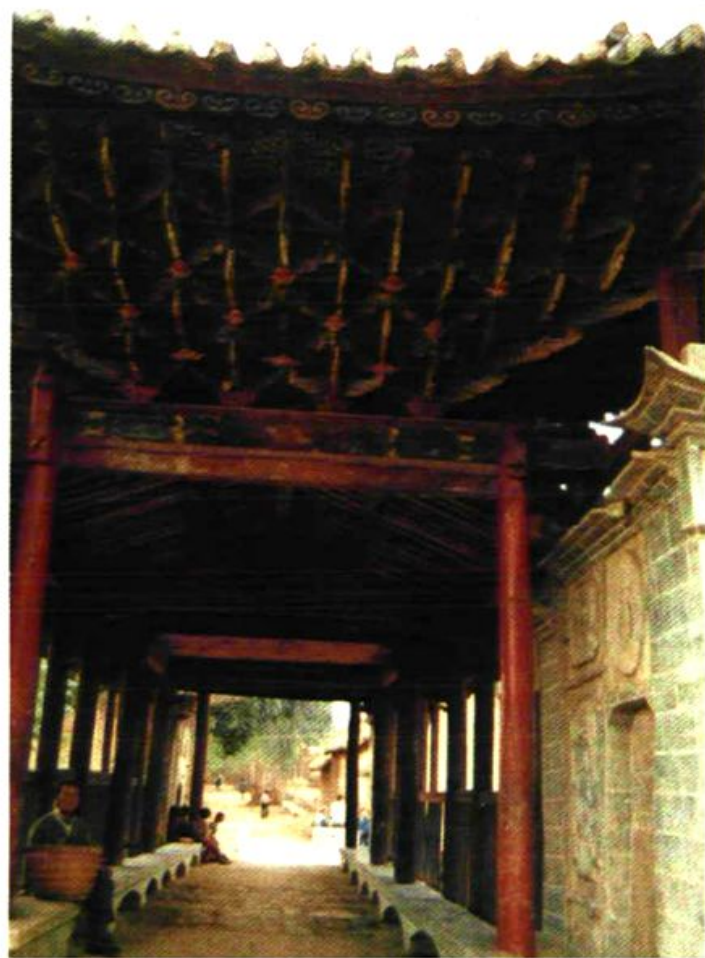
漾濞
云龙桥



云龙顺荡桥

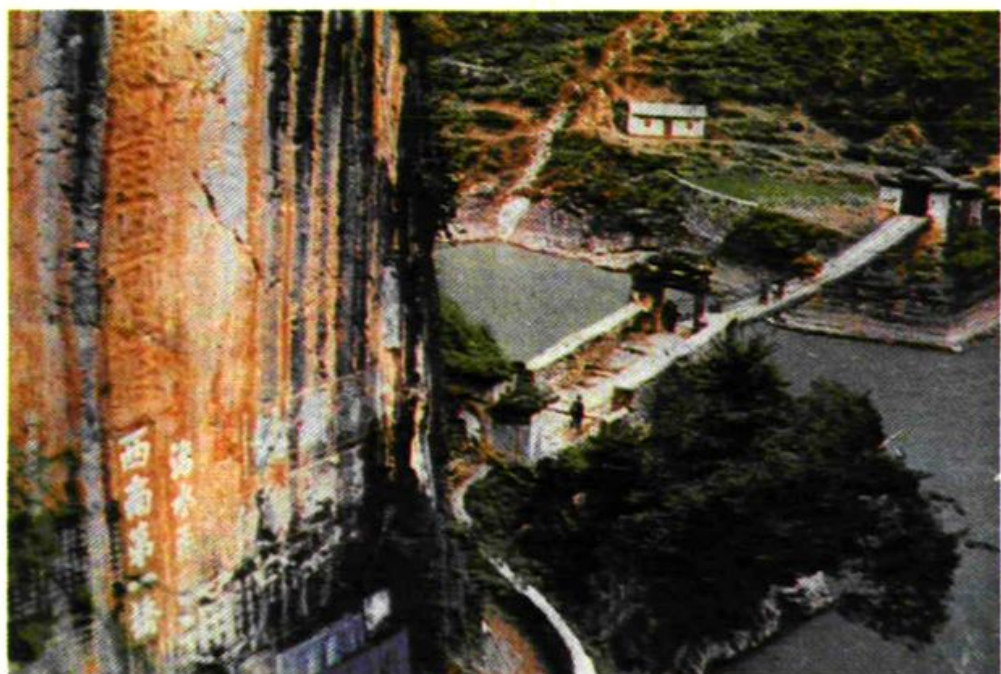


宾川南熏桥

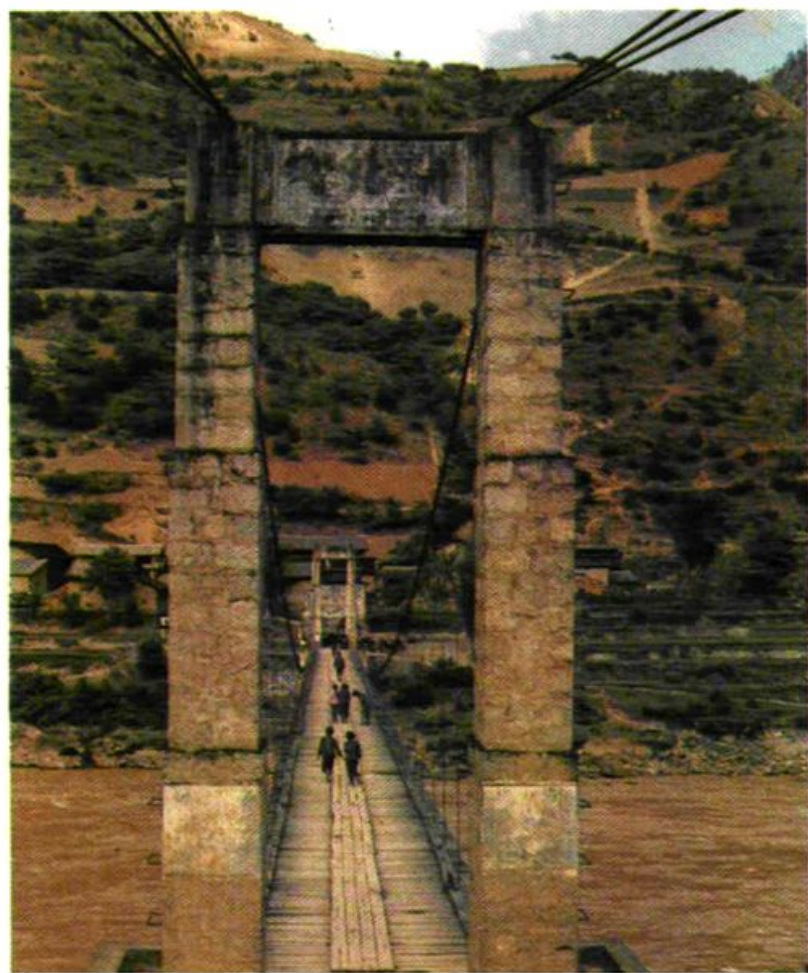


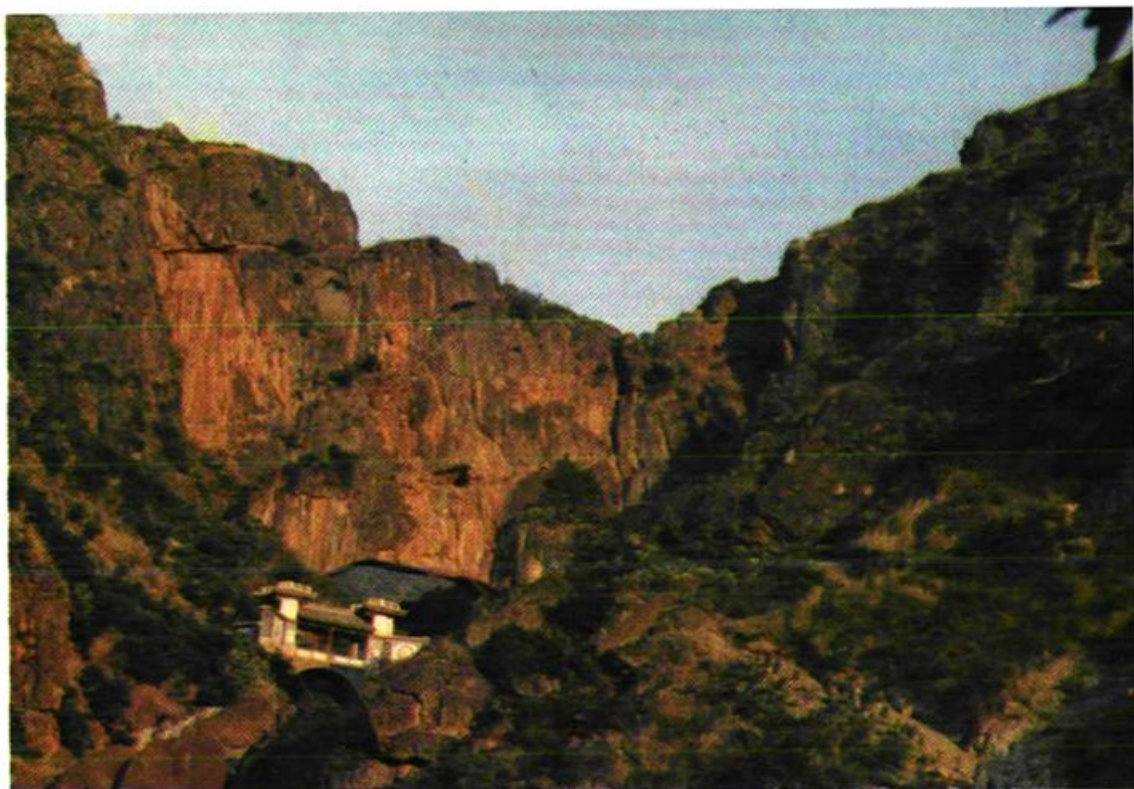
云龙白石乡藤桥

彩虹桥



云龙水井人马吊桥

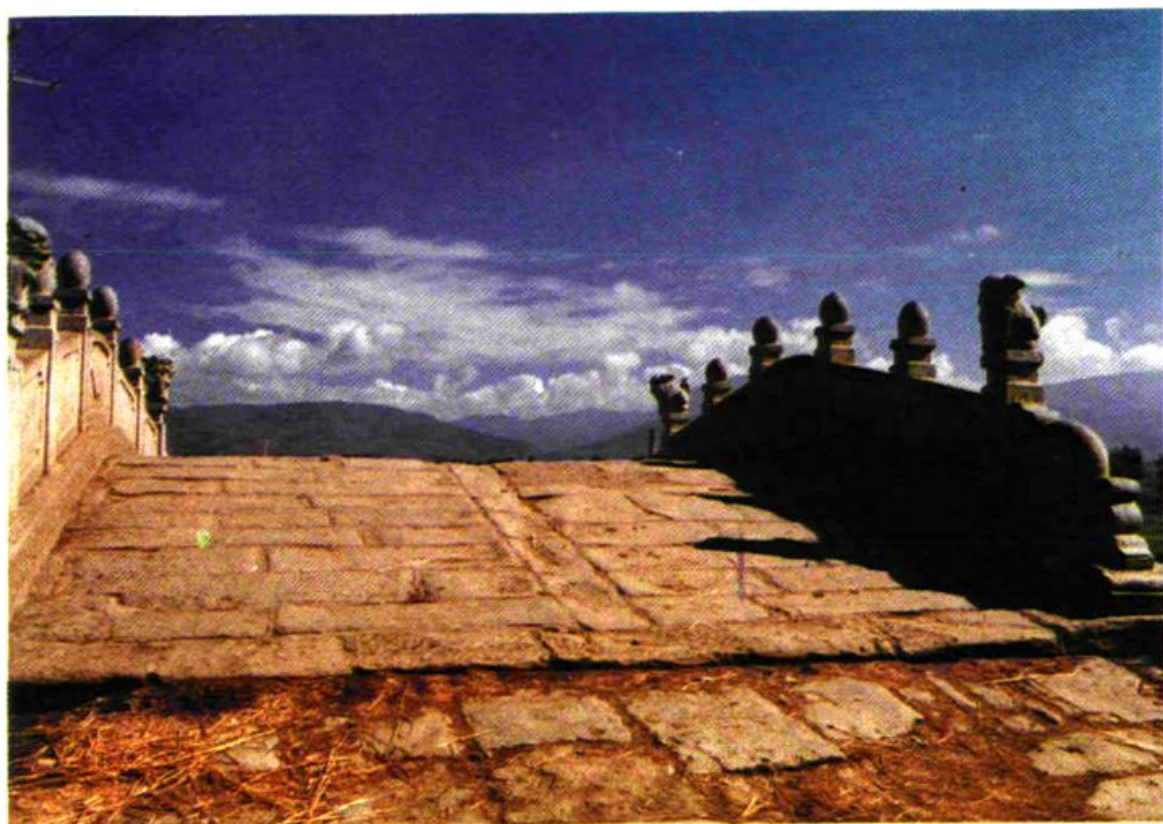




↑ 弥渡天生桥

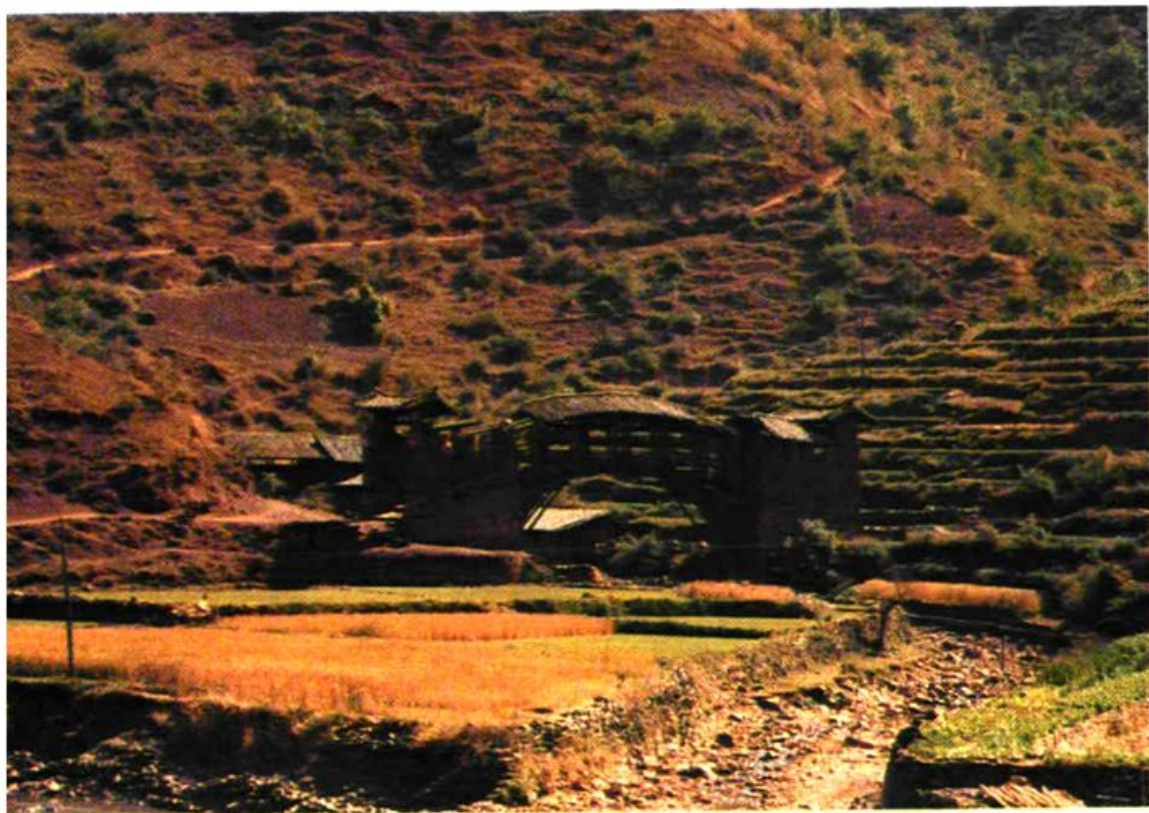
↓ 剑川五洞桥





↑ 剑川永安桥

↓ 云龙长新永镇桥





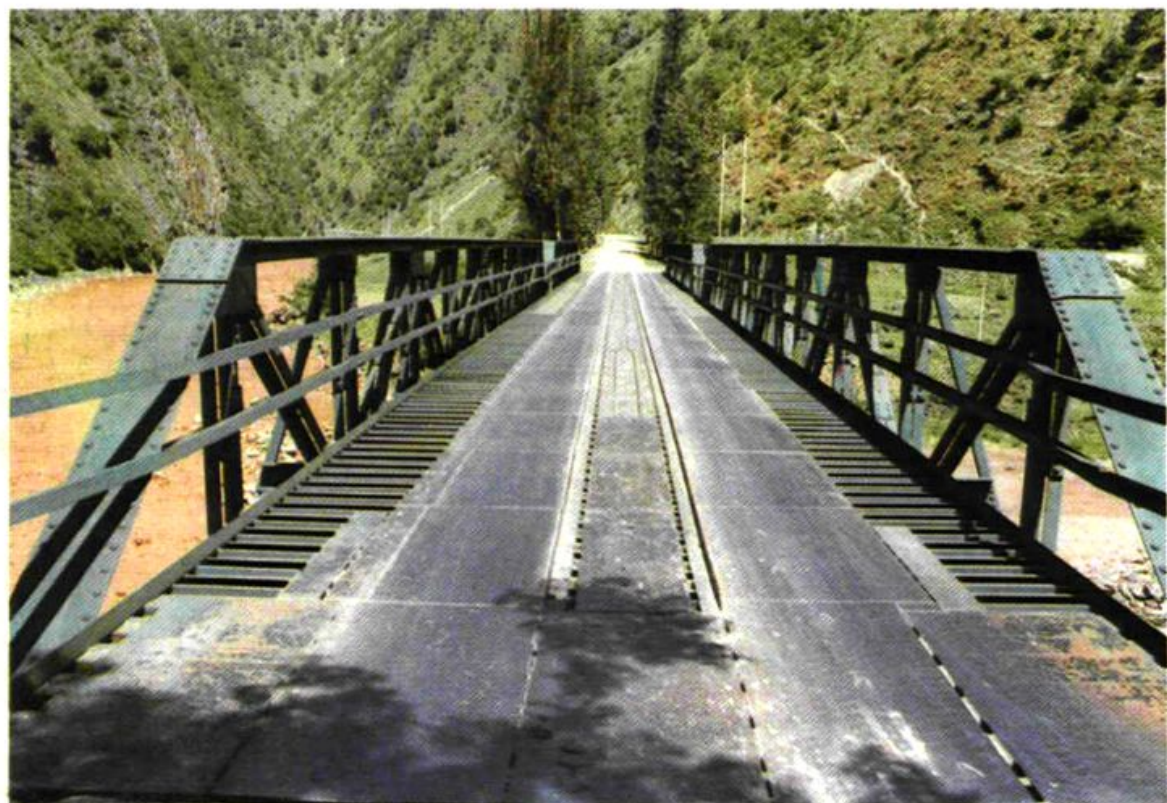
↑ 大芭线（滇缅老线）功果桥

↓ 昆畹公路永保桥





滇緬公路小鐵橋

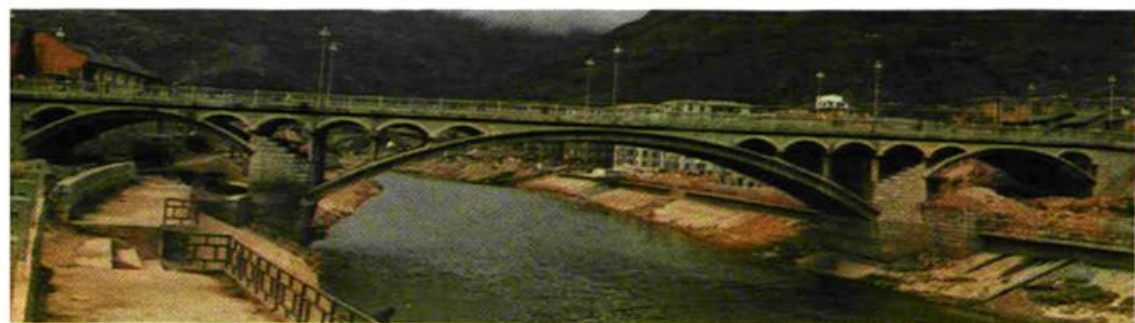




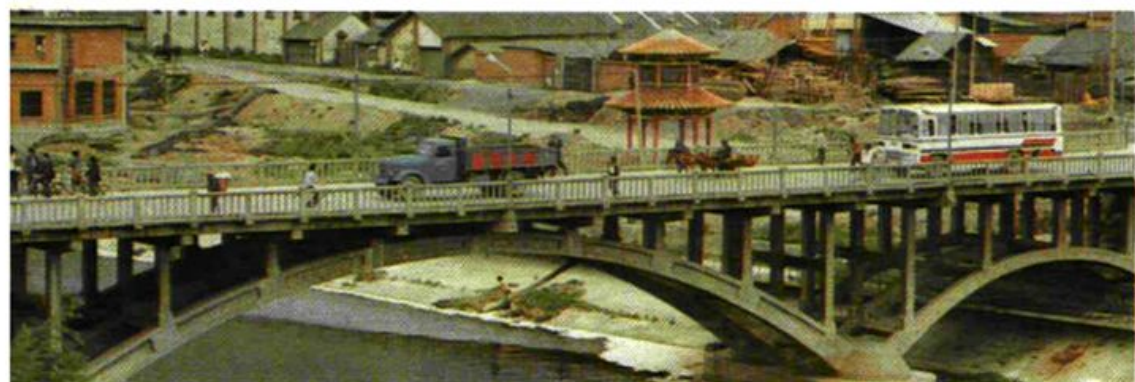
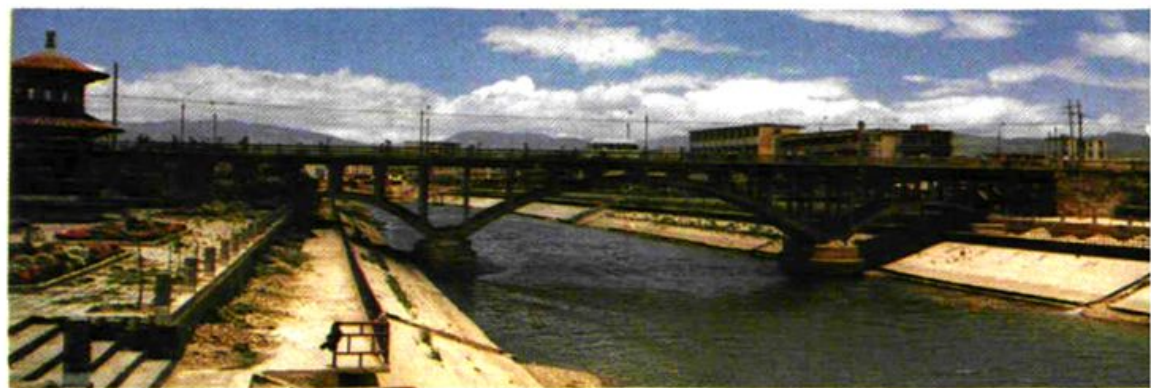
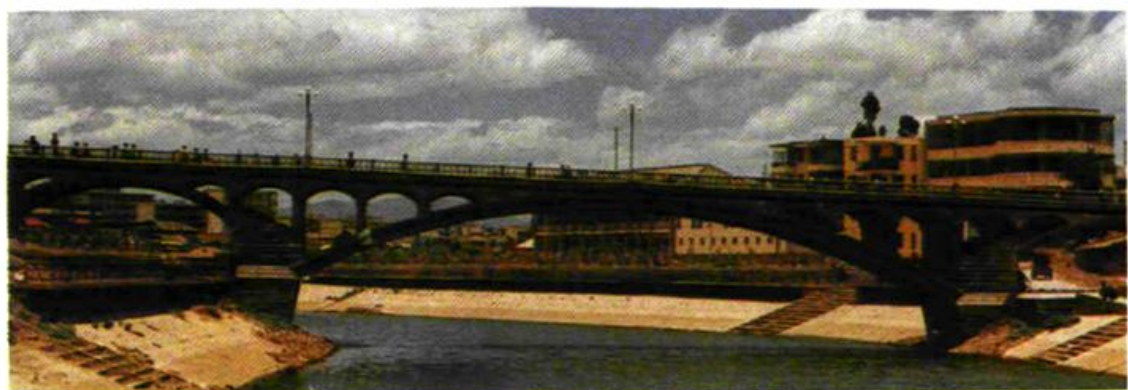
↑ 漾濞瓦厂桥

↓ 洱源西山大桥

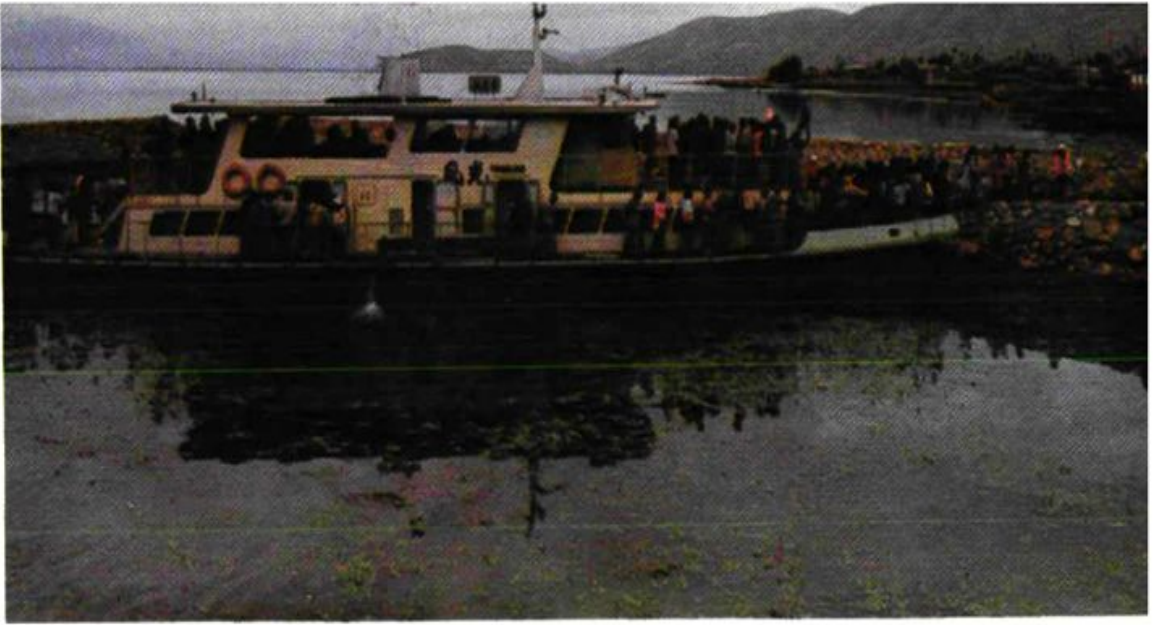




下关黑龙桥



下关新桥



双廊避风港码头

