

A photograph of a modern cafe or restaurant interior. The space features circular tables with white tableware and glasses. The ceiling is dark with numerous small, teardrop-shaped pendant lights and larger circular recessed lights. A large window on the left shows a view of bare trees. The walls are covered in vertical wooden slats.

咖啡馆和餐厅

CAFE & RESTAURANT

韩国建筑世界出版社 编

大连理工大学出版社

图书在版编目(CIP)数据

咖啡馆和餐厅: 英文/韩国建筑世界出版社编. —
大连: 大连理工大学出版社, 2011. 11
ISBN 978-7-5611-6565-2

I. ①咖… II. ①韩… III. ①咖啡馆—室内装饰设计
—世界—图集②餐厅—室内装饰设计—世界—图集 IV.
①TU247.3-64

中国版本图书馆CIP数据核字(2011)第208252号

出版发行: 大连理工大学出版社

(地址: 大连市软件园路80号 邮编: 116023)

印 刷: 精一印刷(深圳)有限公司

幅面尺寸: 220mm×300mm

印 张: 12.75

出版时间: 2011年11月第1版

印刷时间: 2011年11月第1次印刷

出 版 人: 金英伟

统 筹: 房 磊

责任编辑: 张昕焱

封面设计: 卢 杨

责任校对: 张媛媛

书 号: ISBN 978-7-5611-6565-2

定 价: 188.00 元

发 行: 0411-84708842

传 真: 0411-84701466

E-mail: a_detail@dutp.cn

URL: <http://www.dutp.cn>

10247.3-64/7

咖啡馆和餐厅

Cafe & Restaurant

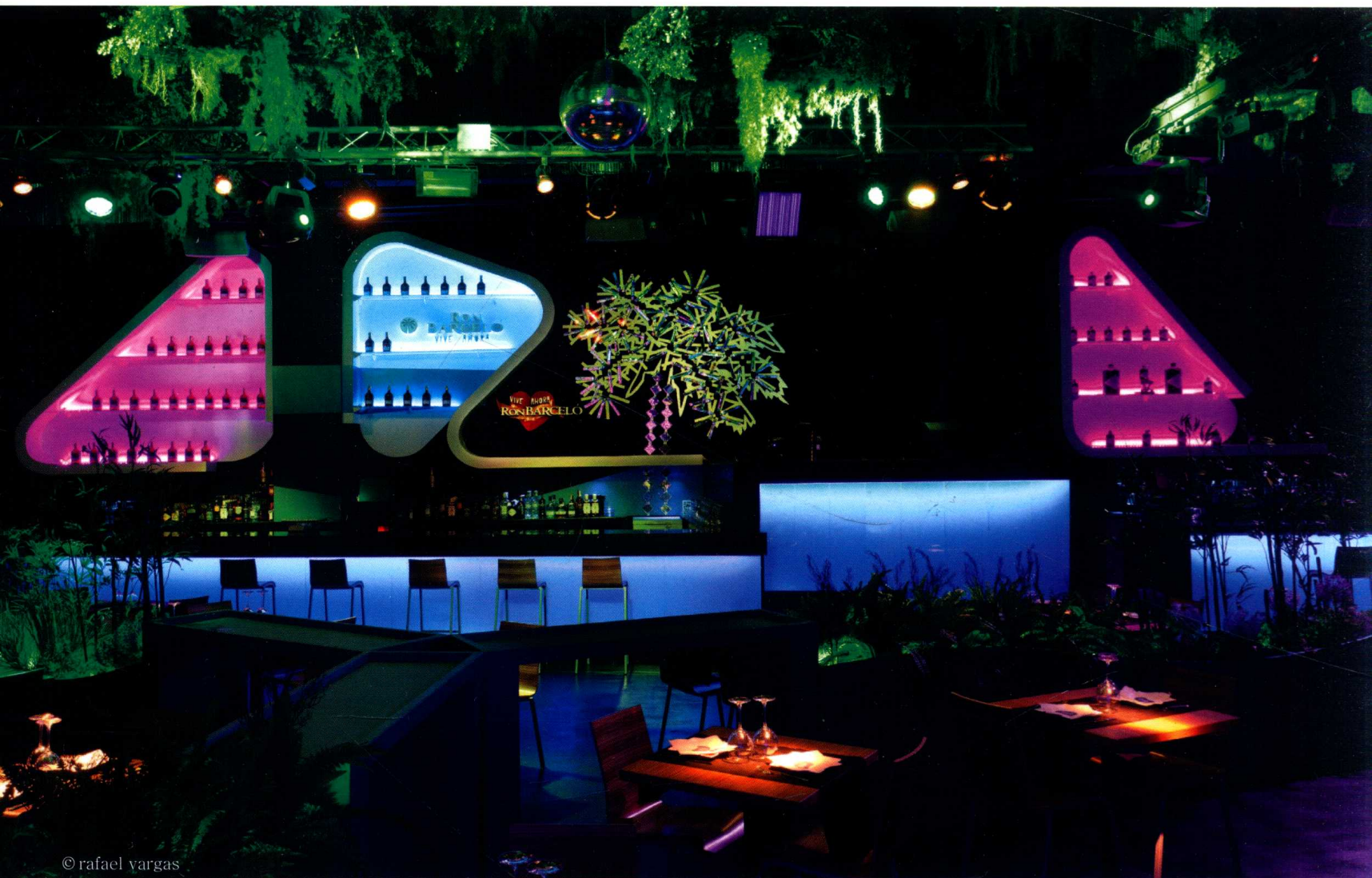
韩国建筑世界出版社 编

大连理工大学出版社

目录 CONTENTS

- 
- 004 Blub Lounge俱乐部
Blub Lounge Club
- 012 幻想咖啡餐馆 爱丽丝漫游奇境
FANTASY CAFE DINING Alice of magic world
- 022 What Happens When餐厅
What Happens When
- 030 KONOBA餐厅
KONOBA
- 038 Rue d'or餐厅
Rue d'or
- 046 Meltino酒廊 & 休息室
Meltino Bar & Lounge
- 056 Haiku寿司店
Haiku Sushi
- 066 杭州Jardin de Jade餐厅
Jardin de Jade, Hangzhou
- 076 金湘玉餐厅
Jin Xiang Yu Restaurant
- 084 La Seine餐厅
La Seine Restaurant
- 094 大树餐厅
TREE Restaurant
- 100 Salon de Bricolage会员俱乐部
Salon de Bricolage
- 106 TWISTER餐厅
TWISTER

- 
- 112 卡塔尔Tse Yang中餐厅
Tse Yang Qatar
- 118 Bar Rouge餐厅
Bar Rouge
- 128 LA NONNA餐厅
LA NONNA Restaurant
- 134 Johnny Smalls餐厅
Johnny Smalls
- 142 Barbecoas餐厅
Barbecoa
- 148 MUSÉE俱乐部
Club MUSÉE
- 156 OCA餐厅
OCA Restaurant
- 164 Lapias餐厅
Lapias Restaurant
- 170 The MOOSE餐厅
The MOOSE
- 178 DN Innovacion鼎恩创意料理
DN Innovacion
- 184 古根海姆博物馆The Wright餐厅
The Wright, Guggenheim Museum
- 190 Autostrada酒店餐厅
Autostrada
- 198 设计师简介
Profile



© rafael vargas

Blub Lounge俱乐部

Blub Lounge Club

Design Elia Felices Interiorismo

Location Batista i Roca, 55 - Pol. Ind. Pla d'en Boet-Mataró, Barcelona, Spain

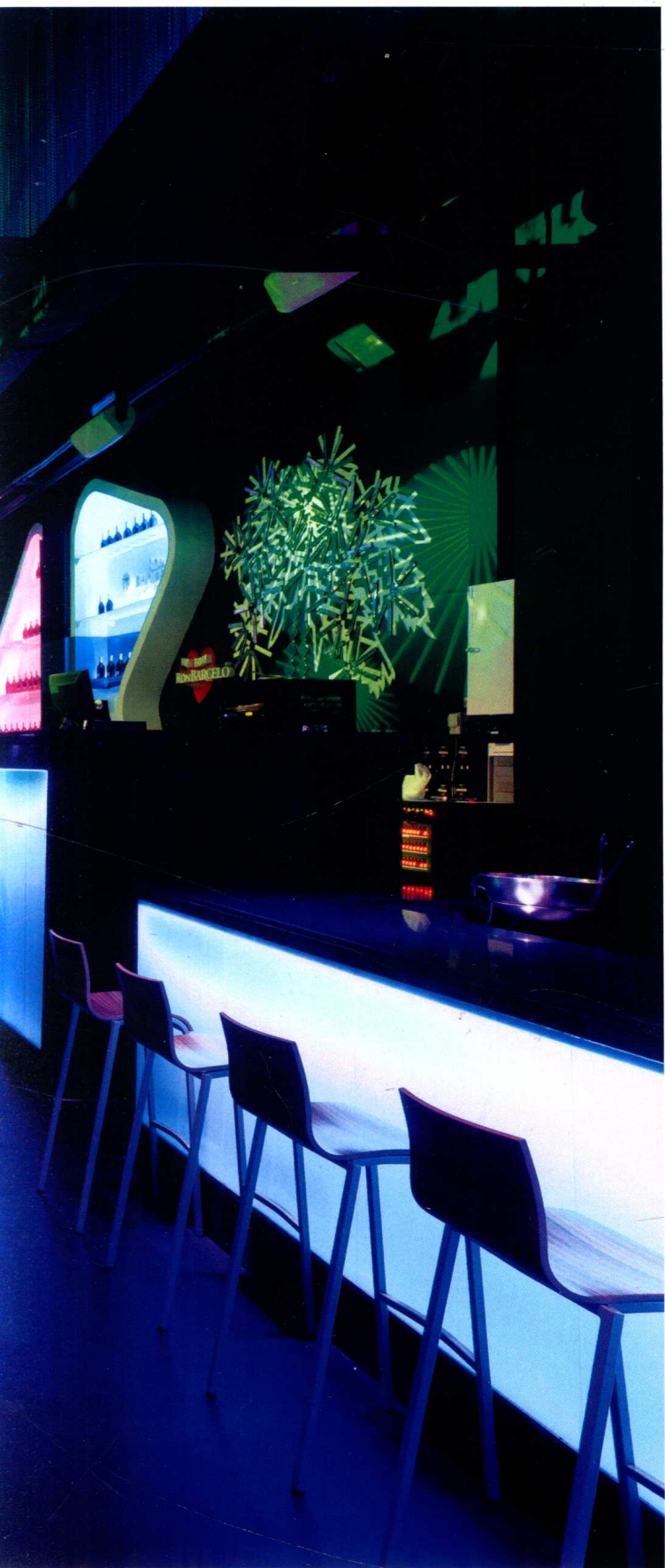
Built Area 600m²

Photographs Rafael Vargas





©rafael vargas



A space with capacity to combine evening dining with music and a discotheque. The lighting, shapes, colors, furniture and the space itself create the experience of forming part of an undersea world. The light shining onto the different elements is broken up into tiny shafts, resembling the rays of light under the sea, bathing every detail in an underwater glimmer. Blub lounge is a small sub-aquatic world. The first immersion takes place as we come through the door with its vegetable, organic imagery.

The open interior space enables circuits of interaction to be established. Movement between the different public areas has been made easier by the use of divisions built into the walls, using new elements such as the blue anodised aluminium Kriska® curtains, which link up to make a light and versatile mesh screen on the upper part of the walls which is both decorative and functional in that it allows spaces to be defined while providing light, color and movement similar to that of water.

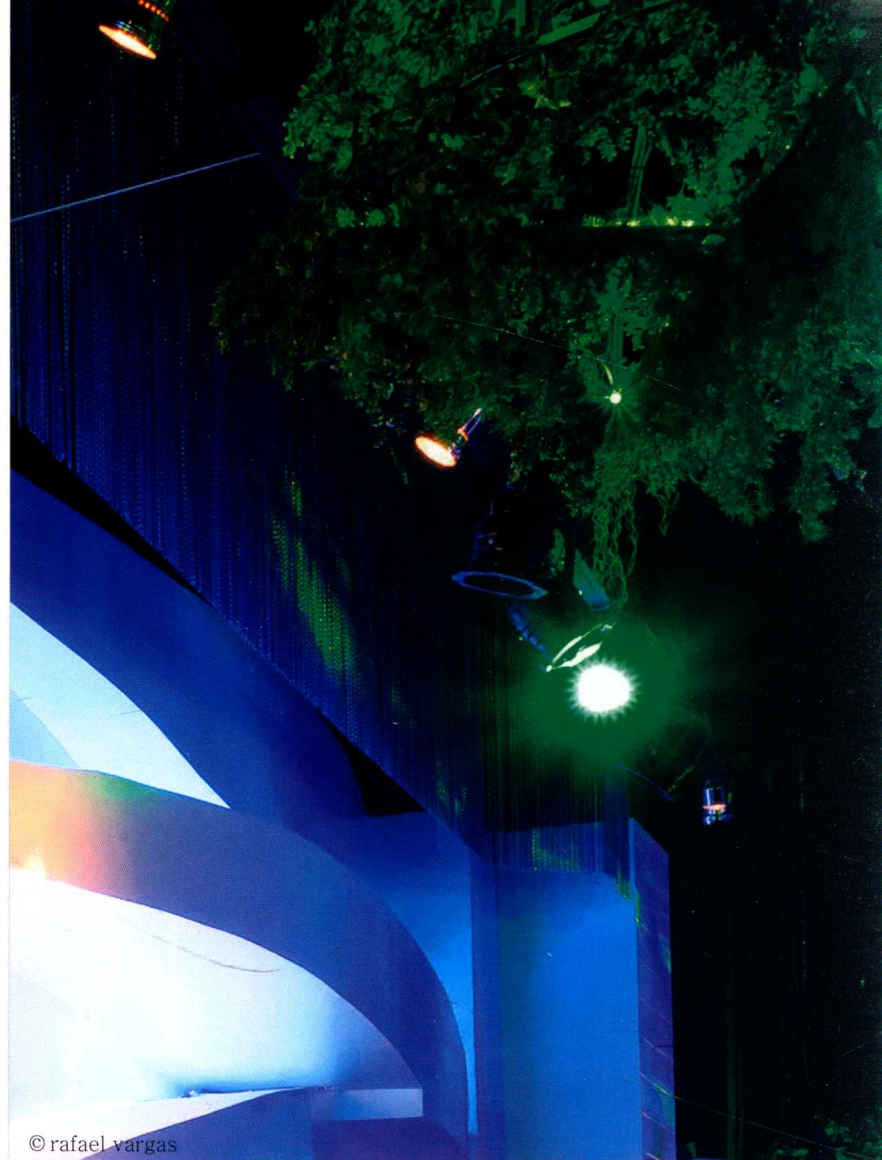
The space has been organized to operate on one practically rectangular level, where the various areas are marked by differences in height. Among the curves on the left side, we find our first companion, a mermaid, formed by a collage of plates, colored glass and bottle openers. A long vertical mirror in the wall at the entrance expands the space and reflects the diversity of the place. From there we move into the central restaurant area, where the tables are aligned and distributed around a metal y-shaped structure, creating several geometric patterns and ambiances as required by the occasion. It can then be transformed into a dance floor. Two symmetrical bars reinforce the concept by having a decoration based on semi-circular shapes, a green-blue color scheme and more vegetation. They are topped by ECO Starlight by Cosentino, making curved black surfaces made of recycled materials, which provide a shimmer that is appropriate for the setting while making use of a product that is innovative, ecological and sustainable through its manufacturing process and composition. Similarly, the rear wall of the bar is decorated with a chic palm tree made of a collage of colored glass to go with the bottles on either side of it.

The stage, rising like rock from the seabed, gives a complete view of the premises. One of the crucial areas for more sophisticated clients, the VIP area, is designed with vertical rows of different plant species, dividing the space into geometric modules of varying height to create a natural, living environment which both protects and provides privacy for those who want to get away from the crowds. The colored RGB led lighting and lamps like trailing seaweed that intertwine with the beams of light are a fundamental part of this microcosm. The banks of theatrical spotlights add to the unique and sophisticated character of the place. The furniture has been exclusively designed to blend into the architectural setting.

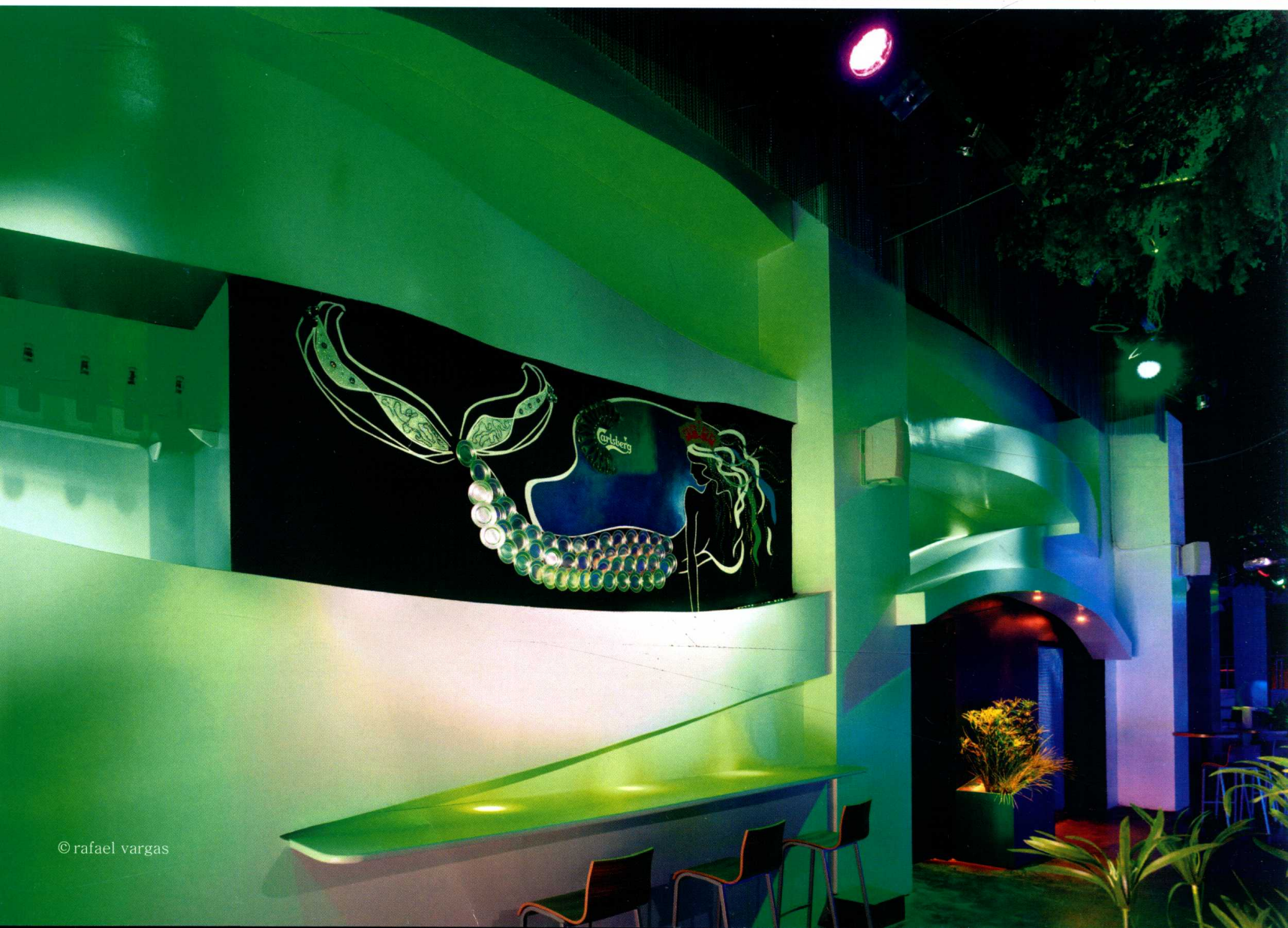
The layout makes the space suitable for a number of uses; concerts, discotheque, restaurant, VIP area, drinks lounge. The space has been designed to be flexible and versatile so that a wide range of activities can be held here.



© rafael vargas



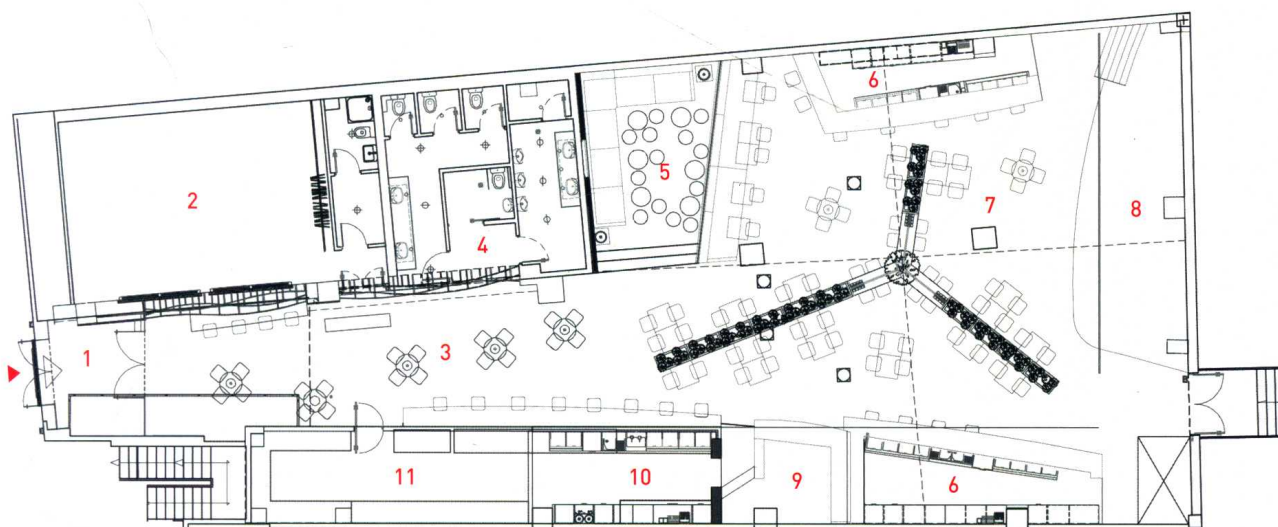
© rafael vargas



© rafael vargas



© rafael vargas



1. Entrance
2. Store
3. Anteroom
4. Bathroom
5. VIP area
6. Bar
7. Central room
8. Stage
9. DJ booth
10. Bar-kitchen
11. Kitchen-attic

0 1 3 5 10

Floor plan





© rafael vargas



幻想咖啡馆 爱丽丝漫游奇境

FANTASY CAFE DINING Alice of magic world

Design Fantastic Design Works Co.,ltd. · Katsunori Suzuki, Eiichi Maruyama

Location Shinjuku, Tokyo, Japan

Built Area 228m²

Construction Diamond Dining

Photographs Diamond Dining



