

Introduction to Quantum Fields on a Lattice 格点量子场导论

CAMBRIDGE
LECTURE
NOTES IN
PHYSICS

CAMBRIDGE
世界图书出版公司

Introduction to Quantum Fields on a Lattice

‘a robust mate’

JAN SMIT

University of Amsterdam



CAMBRIDGE
UNIVERSITY PRESS

世界图书出版公司

书 名: Introduction to Quantum Fields on a Lattice
作 者: J. Smit
中 译 名: 格点量子场导论
出 版 者: 世界图书出版公司北京公司
印 刷 者: 北京世图印刷厂
发 行: 世界图书出版公司北京公司 (北京朝内大街 137 号 100010)
联系电话: 010-64015659, 64038347
电子信箱: kjsk@vip.sina.com
开 本: 24 印 张: 12
出版年代: 2003 年 9 月
书 号: 7-5062-6013-1/O · 402
版权登记: 图字: 01-2003-5538
定 价: 76.00 元

世界图书出版公司北京公司已获得 Cambridge University Press 授权在中国大陆
独家重印发行。

Introduction to Quantum Fields on a Lattice

Quantum field theory, our description of the fundamental forces in nature, was originally formulated in continuous space-time, where it leads to embarrassing infinities which have to be eliminated by a process called renormalization. A simple but rigorous formulation can be obtained by replacing continuous space-time by a discrete set of points on a lattice. This clarifies the essentials of quantum fields using concepts such as universality of critical phenomena and the renormalization group.

This book provides a clear and pedagogical introduction to quantum fields on a lattice. The path integral on the lattice is explained in concrete examples using weak- and strong-coupling expansions. Fundamental concepts, such as ‘triviality’ of Higgs fields and confinement of quarks and gluons into hadrons, are described and illustrated with the results of numerical simulations. The book also provides an introduction to chiral symmetry and chiral gauge theory. Based on the lecture notes of a course given by the author, this book contains many explanatory examples and exercises, and is suitable as a textbook for advanced undergraduate and graduate courses.

JAN SMIT holds a position at the Institute of Theoretical Physics of the University of Amsterdam and, since 1991, he has been Professor of Theoretical Physics at Utrecht University. He is well known for his fundamental contributions to lattice gauge theory. His current interests are lattice methods for quantum gravity, applications to cosmology and the creation of the quark-gluon plasma in the laboratory.

CAMBRIDGE LECTURE NOTES IN PHYSICS 15

General Editors: P. Goddard, J. Yeomans

1. Clarke: The Analysis of Space-Time Singularities
2. Dorey: Exact s-Matrices in Two Dimensional Quantum Field Theory
3. Sciama: Modern Cosmology and the Dark Matter Problem
4. Veltman: Diagrammatica – The Path to Feynman Rules
5. Cardy: Scaling and Renormalization in Statistical Physics
6. Heusler: Black Hole Uniqueness Theorems
7. Coles and Ellis: Is the Universe Open or Closed?
8. Razumov and Saveliev: Lie Algebras, Geometry, and Toda-type Systems
9. Forshaw and Ross: Quantum Chromodynamics and the Pomeron
10. Jensen: Self-organised Criticality
11. Vandezande: Lattice Models of Polymers
12. Esposito: Dirac Operators and Spectral Geometry
13. Kreimer: Knots and Feynman Diagrams
14. Dorfman: An Introduction to **Chaos** in Nonequilibrium Statistical Mechanics
15. Smit: Introduction to Quantum Fields on a Lattice

Preface

She [field theory] is not a robust mate ready to pitch in and lend a helping hand. She is a haunting mistress, refined, and much too beautiful for hard work. She is at her best in formal dress, and thus displayed in this book, where rigor will be found to be absolutely absent. Bryce S. DeWitt

Since the above characterization appeared [1] in 1965 we have witnessed great progress in quantum field theory, our description of fundamental particles and their interactions. This book displays her in informal dress, robust and ready to give results, rigorous, while at a pedestrian mathematical level. By approximating space-time by a collection of points on a lattice we get a number of benefits:

- it serves as a precise but simple definition of quantum fields, which has its own beauty;
- it brings to the fore and clarifies essential aspects such as renormalization, scaling, universality, and the role of topology;
- it makes a fruitful connection to statistical physics;
- it allows numerical simulations on a computer, giving truly non-perturbative results as well as new physical intuition into the behavior of the system.

This book is based on notes of a lecture course given to advanced undergraduate students during the period 1984–1995. An effort was made to accomodate those without prior knowledge of field theory. In the present version, examples from numerical simulations have been replaced

by more recent results, and a few sections (8.3–8.6) on lattice aspects of chiral symmetry have been added. The latter notoriously complicated topic was not dealt with in the lectures, but for this book it seemed appropriate to give an introduction.

An overview of the research area in this book is given by the proceedings of the yearly symposia ‘Lattice XX’, which contain excellent reviews in which the authors tried hard to make the material accessible. These meetings tend to be dominated by QCD, which is understandable, as many of the physical applications are in the sphere of the strong interactions, but a lot of exciting developments usually take place ‘on the fringe’, in the parallel sessions. In fact, Lattice XX may be considered as *the* arena for non-perturbative field theory. The appropriate papers can be retrieved from the e-print archive <http://arXiv.org/> and its mirrors, or the SPIRES website <http://www.slac.stanford.edu/spires/hep/>

I would like to thank my students, who stumbled over my mistakes, for their perseverance and enthusiasm, and my colleagues for collaborations and for sharing their insight into this ever-surprising research field.

Amsterdam, November 2001

PUBLISHED BY THE PRESS SYNDICATE OF THE UNIVERSITY OF CAMBRIDGE
The Pitt Building, Trumpington Street, Cambridge, United Kingdom

CAMBRIDGE UNIVERSITY PRESS
The Edinburgh Building, Cambridge CB2 2RU, UK
40 West 20th Street, New York, NY 10011-4211, USA
477 Williamstown Road, Port Melbourne, VIC 3207, Australia
Ruiz de Alarcón 13, 28014, Madrid, Spain
Dock House, The Waterfront, Cape Town 8001, South Africa
<http://www.cambridge.org>

© Jan Smit 2002

This book is in copyright. Subject to statutory exception
and to the provisions of relevant collective licensing agreements,
no reproduction of any part may take place without
the written permission of Cambridge University Press.

First published 2002

This edition for *Introduction to Quantum Fields on a Lattice* by J. Smit is
published by arrangement with the Syndicate of the Press of University of
Cambridge, Cambridge, England.

Licensed edition for sale in the People's Republic of China only. Not for export
elsewhere.

Library of Congress Cataloguing in Publication data

Smit, Jan, 1943–

Introduction to quantum fields on a lattice: a robust mate / Jan Smit
p. cm. – (Cambridge lecture notes in physics; 15)

Includes bibliographical references and index.

ISBN 0 521 89051 9 (pbk.)

1. Quantum field theory. 2. Lattice theory.

I. Title. II. Series.

QC174.45.S58 2002

530.14'3–dc21 2002016584

ISBN 0 521 89051 9 paperback

Contents

| | | |
|---|-------------|-----------|
| <i>Preface</i> | <i>page</i> | <i>xi</i> |
| 1 Introduction | | 1 |
| 1.1 QED, QCD, and confinement | | 1 |
| 1.2 Scalar field | | 5 |
| 2 Path-integral and lattice regularization | | 8 |
| 2.1 Path integral in quantum mechanics | | 8 |
| 2.2 Regularization by discretization | | 10 |
| 2.3 Analytic continuation to imaginary time | | 12 |
| 2.4 Spectrum of the transfer operator | | 13 |
| 2.5 Latticization of the scalar field | | 15 |
| 2.6 Transfer operator for the scalar field | | 18 |
| 2.7 Fourier transformation on the lattice | | 20 |
| 2.8 Free scalar field | | 22 |
| 2.9 Particle interpretation | | 25 |
| 2.10 Back to real time | | 26 |
| 2.11 Problems | | 28 |
| 3 $O(n)$ models | | 32 |
| 3.1 Goldstone bosons | | 32 |
| 3.2 $O(n)$ models as spin models | | 34 |
| 3.3 Phase diagram and critical line | | 36 |
| 3.4 Weak-coupling expansion | | 39 |
| 3.5 Renormalization | | 46 |
| 3.6 Renormalization-group beta functions | | 48 |
| 3.7 Hopping expansion | | 51 |
| 3.8 Lüscher-Weisz solution | | 55 |
| 3.9 Numerical simulation | | 60 |

| | | |
|----------|--|------------|
| 3.10 | Real-space renormalization group and universality | 67 |
| 3.11 | Universality at weak coupling | 71 |
| 3.12 | Triviality and the Standard Model | 74 |
| 3.13 | Problems | 79 |
| 4 | Gauge field on the lattice | 83 |
| 4.1 | QED action | 83 |
| 4.2 | QCD action | 85 |
| 4.3 | Lattice gauge field | 90 |
| 4.4 | Gauge-invariant lattice path integral | 95 |
| 4.5 | Compact and non-compact Abelian gauge theory | 97 |
| 4.6 | Hilbert space and transfer operator | 99 |
| 4.7 | The kinetic-energy operator | 102 |
| 4.8 | Hamiltonian for continuous time | 105 |
| 4.9 | Wilson loop and Polyakov line | 107 |
| 4.10 | Problems | 112 |
| 5 | $U(1)$ and $SU(n)$ gauge theory | 115 |
| 5.1 | Potential at weak coupling | 115 |
| 5.2 | Asymptotic freedom | 121 |
| 5.3 | Strong-coupling expansion | 125 |
| 5.4 | Potential at strong coupling | 129 |
| 5.5 | Confinement versus screening | 132 |
| 5.6 | Glueballs | 135 |
| 5.7 | Coulomb phase, confinement phase | 136 |
| 5.8 | Mechanisms of confinement | 138 |
| 5.9 | Scaling and asymptotic scaling, numerical results | 140 |
| 5.10 | Problems | 144 |
| 6 | Fermions on the lattice | 149 |
| 6.1 | Naive discretization of the Dirac action | 149 |
| 6.2 | Species doubling | 151 |
| 6.3 | Wilson's fermion method | 156 |
| 6.4 | Staggered fermions | 160 |
| 6.5 | Transfer operator for Wilson fermions | 161 |
| 6.6 | Problems | 165 |
| 7 | Low-mass hadrons in QCD | 170 |
| 7.1 | Integrating over the fermion fields | 170 |
| 7.2 | Hopping expansion for the fermion propagator | 171 |
| 7.3 | Meson and baryon propagators | 173 |
| 7.4 | Hadron masses at strong coupling | 177 |

| | | |
|----------|--|------------|
| 7.5 | Numerical results | 179 |
| 7.6 | The parameters of QCD | 188 |
| 7.7 | Computing the gauge coupling from the masses | 190 |
| 7.8 | Problems | 190 |
| 8 | Chiral symmetry | 193 |
| 8.1 | Chiral symmetry and effective action in QCD | 193 |
| 8.2 | Pseudoscalar masses and the $U(1)$ problem | 199 |
| 8.3 | Chiral anomalies | 202 |
| 8.4 | Chiral symmetry and the lattice | 204 |
| 8.5 | Spontaneous breaking of chiral symmetry | 212 |
| 8.6 | Chiral gauge theory | 217 |
| 8.7 | Outlook | 223 |
| 8.8 | Problems | 223 |
| | Appendix A $SU(n)$ | 229 |
| A.1 | Fundamental representation of $SU(n)$ | 229 |
| A.2 | Adjoint representation of $SU(n)$ | 231 |
| A.3 | Left and right translations in $SU(n)$ | 234 |
| A.4 | Tensor method for $SU(n)$ | 236 |
| | Appendix B Quantization in the temporal gauge | 239 |
| | Appendix C Fermionic coherent states | 242 |
| | Appendix D Spinor fields | 253 |
| | <i>Notes</i> | 258 |
| | <i>References</i> | 261 |
| | <i>Index</i> | 267 |

1

Introduction

We introduce here quarks and gluons. The analogy with electrodynamics at short distances disappears at larger distances with the emergence of the string tension, the force that confines the quarks and gluons permanently into bound states called hadrons.

Subsequently we introduce the simplest relativistic field theory, the classical scalar field.

1.1 QED, QCD, and confinement

Quantum electrodynamics (QED) is the quantum theory of photons (γ) and charged particles such as electrons (e^\pm), muons (μ^\pm), protons (p), pions (π^\pm), etc. Typical phenomena that can be described by perturbation theory are Compton scattering ($\gamma + e^- \rightarrow \gamma + e^-$), and pair annihilation/production such as $e^+ + e^- \rightarrow \mu^+ + \mu^-$. Examples of non-perturbative phenomena are the formation of atoms and molecules. The expansion parameter of perturbation theory is the fine-structure constant¹ $\alpha = e^2/4\pi$.

Quantum chromodynamics (QCD) is the quantum theory of quarks (q) and gluons (g). The quarks u , d , c , s , t and b ('up', 'down', 'charm', 'strange', 'top' and 'bottom') are analogous to the charged leptons ν_e , e , ν_μ , μ , ν_τ , and τ . In addition to electric charge they also carry 'color charges', which are the sources of the gluon fields. The gluons are analogous to photons, except that they are self-interacting because they also carry color charges. The strength of these interactions is measured by $\alpha_s = g^2/4\pi$ (alpha strong), with g analogous to the electromagnetic charge e . The 'atoms' of QCD are $q\bar{q}$ (\bar{q} denotes the antiparticle of q)

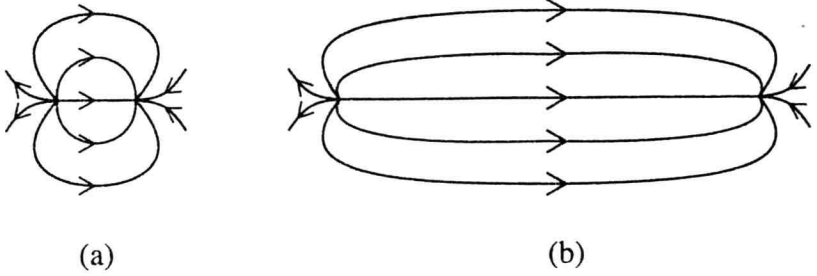


Fig. 1.1. Intuitive representation of chromoelectric field lines between a static quark-antiquark source pair in QCD: (a) Coulomb-like at short distances; (b) string-like at large distances, at which the energy content per unit length becomes constant.

bound states called mesons† (π , K , η , η' , ρ , K^* , ω , ϕ , ...) and $3q$ bound states called baryons (the nucleon N , and furthermore Σ , Λ , Ξ , Δ , Σ^* , Λ^* , ...). The mesons are bosons and the baryons are fermions. There may be also multi-quark states analogous to molecules. Furthermore, there are expected to be glueballs consisting mainly of gluons. These bound states are called ‘hadrons’ and their properties as determined by experiment are recorded in the tables of the Particle Data Group [2].

The way that the gluons interact among themselves has dramatic effects. At distances of the order of the hadron size, the interactions are strong and α_s effectively becomes arbitrarily large as the distance scale increases. Because of the increasing potential energy between quarks at large distances, it is not possible to have single quarks in the theory: they are permanently confined in bound states.

For a precise characterization of confinement one considers the theory with gluons only (no dynamical quarks) in which static external sources are inserted with quark quantum numbers, a distance r apart. The energy of this configuration is the quark-antiquark potential $V(r)$. In QCD confinement is realized such that $V(r)$ increases linearly with r as $r \rightarrow \infty$,

$$V(r) \approx \sigma r, \quad r \rightarrow \infty. \quad (1.1)$$

The coefficient σ is called the string tension, because there are effective string models for $V(r)$. Such models are very useful for grasping some of the physics involved (figure 1.1).

Because of confinement, quarks and gluons cannot exist as free parti-

† The quark content of these particles is given in table 7.1 in section 7.5.

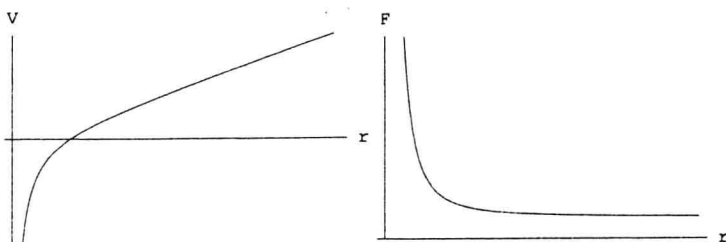


Fig. 1.2. Shape of the static $q\bar{q}$ potential and the force $F = \partial V / \partial r$.

cles. No such free particles have been found. However, scattering experiments at high momentum transfers (corresponding to short distances) have led to the conclusion that there are quarks and gluons inside the hadrons. The effective interaction strength α_s is *small* at short distances. Because of this, perturbation theory is applicable at short distances or large momentum transfers. This can also be seen from the force derived from the $q\bar{q}$ potential, $F = \partial V / \partial r$. See figure 1.2. Writing conventionally

$$F(r) = \frac{4}{3} \frac{\alpha_s(r)}{r^2}, \quad (1.2)$$

we know that $\alpha_s \rightarrow 0$ very slowly as the distance decreases,

$$\alpha_s(r) \approx \frac{4\pi}{11 \ln(1/\Lambda^2 r^2)}. \quad (1.3)$$

This is called *asymptotic freedom*. The parameter Λ has the dimension of a mass and may be taken to set the dimension scale in quark-less ‘QCD’. For the glueball mass m or string tension σ we can then write

$$m = C_m \Lambda, \quad \sqrt{\sigma} = C_\sigma \Lambda. \quad (1.4)$$

Constants like C_m and C_σ , which relate short-distance to long-distance properties, are non-perturbative quantities. They are pure numbers whose computation is a challenge to be met by the theory developed in the following chapters.

The value of the string tension σ is known to be approximately $(400 \text{ MeV})^2$. This information comes from a remarkable property of the hadronic mass spectrum, the fact that, for the leading spin states, the spin J is approximately linear in the squared mass m^2 ,

$$J = \alpha_0 + \alpha' m^2. \quad (1.5)$$

See figure 1.3. Such approximately straight ‘Regge trajectories’ can be

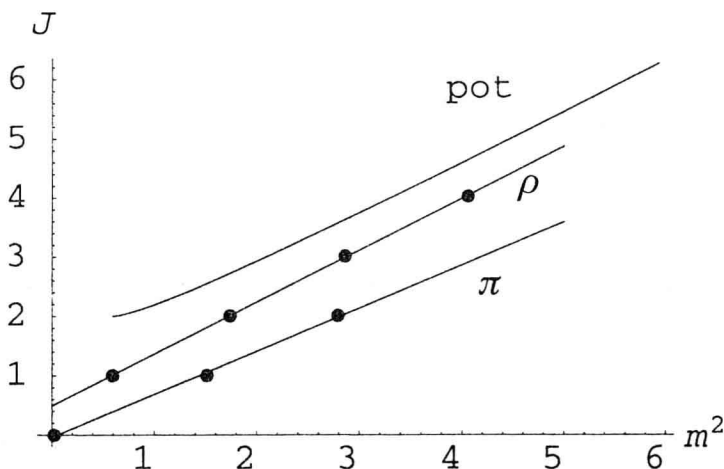


Fig. 1.3. Plot of spin J versus m^2 (GeV^2) for ρ - and π -like particles. The dots give the positions of particles, the straight lines are fits to the data, labeled by their particles with lowest spin. The line labeled 'pot' is L versus H^2 for the solution (1.10), for clarity shifted upward by two units, for $m_q = m_\rho/2$, $\sigma = 1/8\alpha_\rho$.

understood from the following simple effective Hamiltonian for binding of a $q\bar{q}$ pair,

$$H = 2\sqrt{m_q^2 + p^2} + \sigma r. \quad (1.6)$$

Here m_q is the mass of the constituent quarks, taken to be equal for simplicity, $p = |\mathbf{p}|$ is the relative momentum, $r = |\mathbf{r}|$ is the relative separation, and the spin of the quarks is ignored. The potential is taken to be purely linear, because we are interested in the large-mass bound states with large relative angular momentum L , for which one expects that only the long-distance part of $V(r)$ is important.

For such states with large quantum number L the classical approximation should be reasonable. Hence, consider the classical Hamilton equations,

$$\frac{dr_k}{dt} = \frac{\partial H}{\partial p_k}, \quad \frac{dp_k}{dt} = -\frac{\partial H}{\partial r_k}. \quad (1.7)$$

and the following Ansatz for a circular solution:

$$\begin{aligned} r_1 &= a \cos(\omega t), & r_2 &= a \sin(\omega t), & r_3 &= 0, \\ p_1 &= -b \sin(\omega t), & p_2 &= b \cos(\omega t), & p_3 &= 0. \end{aligned} \quad (1.8)$$

Substituting (1.8) into (1.7) we get relations among ω , a , and b , and expressions for p and r , which can be written in the form

$$p = b = \sigma\omega^{-1}, \quad r = a = 2s^{-1}\sigma^{-1}p, \quad s \equiv \sqrt{1 + m_q^2/p^2}, \quad (1.9)$$

such that L and H can be written as

$$L = rp = 2s^{-1}\sigma^{-1}p^2, \quad H = 2(s + s^{-1})p. \quad (1.10)$$

For $p^2 \gg m_q^2$, $s \approx 1$, $L \propto p^2$ and $H \propto p$. Then $L \propto H^2$ and, because $H = m$ is the mass (rest energy) of the bound state, we see that

$$\alpha' \equiv [LH^{-2}]_{p/m_q \rightarrow \infty} = (8\sigma)^{-1}. \quad (1.11)$$

It turns out that L is approximately linear in H^2 even for quite small p^2 , such that $L < 1$, as shown in figure 1.3. Of course, the classical approximation is suspect for L *not* much larger than unity, but the same phenomenon appears to take place quantum mechanically in nature, where the lower spin states are also near the straight line fitting the higher spin states.²

With $\alpha' = 1/8\sigma$, the experimental value $\alpha' \approx 0.90 \text{ GeV}^{-2}$ gives $\sqrt{\sigma} \approx 370 \text{ MeV}$. The effective string model (see e.g. [3] section 10.5) leads approximately to the same answer: $\alpha' = 1/2\pi\sigma$, giving $\sqrt{\sigma} \approx 420 \text{ MeV}$. The string model is perhaps closer to reality if most of the bound-state energy is in the string-like chromoelectric field, but it should be kept in mind that both the string model and the effective Hamiltonian give only an approximate representation of QCD.

1.2 Scalar field

We start our exploration of field theory with the scalar field. Scalar fields $\varphi(x)$ ($x = (\mathbf{x}, t)$, $t \equiv x^0$) are used to describe spinless particles. Particles appearing elementary on one distance scale may turn out to be composite bound states on a smaller distance scale. For example, protons, pions, etc. appear elementary on the scale of centimeters, but composed of quarks and gluons on much shorter distance scales. Similarly, fields may also be elementary or composite. For example, for the description of pions we may use elementary scalar fields $\varphi(x)$, or composite scalar fields of the schematic form $\bar{\psi}(x)\gamma_5\psi(x)$, where $\psi(x)$ and $\bar{\psi}(x)$ are quark fields and γ_5 is a Dirac matrix. Such composite fields can still be approximately represented by elementary $\varphi(x)$, which are then called effective fields. This is useful for the description of effective

interactions, which are the result of more fundamental interactions on a shorter distance scale.

A basic tool in the description is the action $S = \int dt L$, with L the Lagrangian. For a nonrelativistic particle described by coordinates q_k , $k = 1, 2, 3$, the Lagrangian has the form kinetic energy minus potential energy, $L = \dot{q}_k \dot{q}_k / 2m - V(q)$.† For the anharmonic oscillator in three dimensions the potential has the form $V(q) = \omega^2 q^2 / 2 + \lambda (q^2)^2 / 4$, $q^2 \equiv q_k q_k$. In field theory a simple example is the action for the φ^4 theory,

$$S = \int_M d^4x \mathcal{L}(x), \quad d^4x = dx^0 dx^1 dx^2 dx^3, \quad (1.12)$$

$$\mathcal{L}(x) = \frac{1}{2} \partial_t \varphi(x) \partial_t \varphi(x) - \frac{1}{2} \nabla \varphi(x) \cdot \nabla \varphi(x) - \frac{1}{2} \mu^2 \varphi(x)^2 - \frac{1}{4} \lambda \varphi(x)^4, \quad (1.13)$$

Here M is a domain in space-time, $\varphi(x)$ is a scalar field, $\mathcal{L}(x)$ is the action density or Lagrange function, and λ and μ^2 are constants (λ is dimensionless and μ^2 has dimension $(\text{mass})^2 = (\text{length})^{-2}$). Note that the index \mathbf{x} is a continuous analog of the discrete index k : $\varphi(\mathbf{x}, t) \leftrightarrow q_k(t)$.

Requiring the action to be stationary under variations $\delta\varphi(x)$ of $\varphi(x)$, such that $\delta\varphi(x) = 0$ for x on the boundary of M , leads to the equation of motion:

$$\begin{aligned} \delta S &= \int d^4x [-\partial_t^2 \varphi(x) + \nabla^2 \varphi(x) - \mu^2 \varphi(x) - \lambda \varphi(x)^3] \delta\varphi(x) \\ &= 0 \quad \Rightarrow \quad (\partial_t^2 - \nabla^2 + \mu^2) \varphi + \lambda \varphi^3 = 0. \end{aligned} \quad (1.14)$$

In the first step we made a partial integration. In classical field theory the equations of motion are very important (e.g. Maxwell theory). In quantum field theory their importance depends very much on the problem and method of solution. The action itself comes more to the foreground, especially in the path-integral description of quantum theory.

Various states of the system can be characterized by the energy $H = \int d^3x \mathcal{H}$. The energy density has the form kinetic energy plus potential energy, and is given by

$$\mathcal{H} = \frac{1}{2} \dot{\varphi}^2 + \frac{1}{2} (\nabla \varphi)^2 + U, \quad (1.15)$$

$$U = \frac{1}{2} \mu^2 \varphi^2 + \frac{1}{4} \lambda \varphi^4. \quad (1.16)$$

The field configuration with lowest energy is called the ground state. It has $\dot{\varphi} = \nabla \varphi = 0$ and minimal U . We shall assume $\lambda > 0$, such that \mathcal{H} is

† Unless indicated otherwise, summation over repeated indices is implied, $\dot{q}_k \dot{q}_k \equiv \sum_k \dot{q}_k \dot{q}_k$.