

Beautiful China 美丽中国 3

Public and Commercial Landscape 公共商业景观

佳图文化 编



华南理工大学出版社
SOUTH CHINA UNIVERSITY OF TECHNOLOGY PRESS



Beautiful China 美丽中国 3

Public and Commercial Landscape 公共商业景观

佳图文化 编



华南理工大学出版社
SOUTH CHINA UNIVERSITY OF TECHNOLOGY PRESS

• 广州 •

图书在版编目(CIP)数据

美丽中国 3: 公共商业景观 / 佳图文化编. —广州: 华南理工大学出版社, 2013. 10
ISBN 978-7-5623-3985-4

I. ①美… II. ①佳… III. ①商业区-景观设计-中国-现代 IV. ①TU984.13

中国版本图书馆CIP数据核字(2013)第163386号

美丽中国 3: 公共商业景观
佳图文化 编

出版人: 韩中伟

出版发行: 华南理工大学出版社

(广州五山华南理工大学17号楼, 邮编510640)

<http://www.scutpress.com.cn> E-mail: scutc13@scut.edu.cn

营销部电话: 020-87113487 87111048 (传真)

策划编辑: 赖淑华

责任编辑: 杨爱民 庄彦 赖淑华

印刷者: 广州市中天彩色印刷有限公司

开本: 1016mm×1370mm 1/16 印张: 16

成品尺寸: 245mm×325mm

版次: 2013年10月第1版 2013年10月第1次印刷

定价: 296.00元

版权所有 盗版必究 印装差错 负责调换

Preface | 前言

Landscape is traces of nature and human activity on the earth and natural landscape is a miracle created by nature while humane landscape is drawn down by designer souls. Excellent designers will not debase the nature wonder in their pursuit of soul in pen; instead they will utilize the wonder to create various styles of humane landscape.

The shared goal of landscape in American-style, British style or Chinese style is to create a graceful dwelling environment. It refers to aesthetics in visual enjoyment and the harmony between human and human, human and environment. For this reason, it requires more than working on external landscaping; designers shall extend their study further to the inner character and definition of landscape, i.e. presenting landscape ecological character, environmental friendly concept etc. A landscape external decides how many people are attracted to come while its inner character decides how many people will really choose here.

A new concept Beautiful China is firstly presented in 18th CPC National Congress. It covers two connotations: the beauty of national nature environment and the beauty of national spirit and social development. Landscape planning and design of the time has departed from the single pursuit of landscape external, focuses more one the inner character of ecology, environment-friendly etc. On the basis of ensuring the landscape external appearance, designers pay attention to the selecting materials of low energy consumption, high efficiency and ultra environment-friendly, fully following the concept of "construction of ecological civilization in a prominent position" proposed in 18th CPC National Congress. The requirements of landscape planning and design of the time tallies right with the spiritual connotation of Beautiful China. The book has selected projects correspond to the double standards of Beautiful China, offering a feast of visual beauty as well as an ecological feast of spirit to single person, society and nation.

The book has professionally analyzed the selected project in multiple perspectives. In the content scheduling, the key points, highlights, design concepts etc are analyzed with a great quantity of professional technical drawings, detailed and informative. We expect to help designers and landscape practitioners create more beautiful landscapes in China, achieve Chinese dream of jointly constructing beautiful China and enduring development.

景观，是大自然和人类活动在大地上的烙印。自然景观是大自然创造出来的神奇，人文景观是设计师笔下的灵魂。好的设计师在追求笔下灵魂的时候不仅不会用手中的笔去掉大自然的神奇，而且还会充分利用大自然的神奇创造出各种风格的人文景观。

但不管是美式风格、英伦风格还是中式风格的景观，共同的目标都是创造一个美丽的栖居环境。这里所谓的“美丽”，一是指人视觉上美的享受；二是指人精神上、人与人之间、人与环境之间的和谐之美。为了实现这个目标，纯粹从景观外在美化上下功夫是远远不够的，设计师的笔触应该更深入地伸向景观内在属性的定义上，比如赋予景观生态特质、环保理念等。景观的外在决定了能吸引到多少人，而景观的内在属性却决定了真正有多少人选择这里。

中共十八大首次提出“美丽中国”的新概念。“美丽中国”意涵着两个价值维度：一是国家自然环境之美；二是国家精神及其社会发展之美。当代景观规划的设计已经脱离了纯粹的景观外在化追求，而更加注重生态、环保等景观的内在属性。设计师在保证景观外在美观的基础上，注重选用低能耗、高效能、超环保的材料，全面贯彻中共十八大“把生态文明建设放在突出的位置”的精神理念。当代景观规划设计的要求正契合了“美丽中国”的精神内涵。本书在案例选择上执行的就是“美丽中国”的双重标准，既给人带来一次美的视觉盛宴，又让个人、社会和祖国在精神上享受一场生态盛筵。

本书从多角度详细且专业地分析了“美丽”的景观案例。内容编排上，分别从景观案例的关键点、亮点、设计思想等方面入手，配合大量的专业技术图纸，资料丰富而详实。我们的努力是为了让设计师及景观从业者在中国的蓝图上创作出更多更美的景观，在景观设计上共同实现建设美丽中国、实现中华民族伟大复兴的中国梦。

Sci-Tech Park Landscape 科技园区景观

CONTENTS 目录

Sci-Tech Park Landscape 科技园区景观

Factory Complex of Nanjing Estun Automation Technology Co., Ltd.	002
南京埃斯顿自动控制技术有限公司厂区	
Ningbo Chunxiao Pioneering Service Center	008
宁波春晓创业服务中心	
Wuhan Future City	014
武汉未来科技城	
Guangxi Egret Park	022
广西白鹭公园	
Xuzhuang Software Park	034
徐庄软件园	

Commercial Landscape 商业景观

Landscape Design for Air City, Beijing	044
北京顺义中建翼之城商业景观设计	
Changsha Taskin City Landscape Design	056
长沙德思勤城市广场景观设计	
Suzhou Harmony Times Square	064
苏州工业园圆融时代广场	
Chongming Yulin Business square	072
崇明育麟商务广场	

Tourism Landscape 旅游度假区景观

The Overall Planning of Taizhou Xianju Tea Valley Resort	082
台州仙居茶溪谷度假区总体规划	
Shanxi Zhangbi Castle SPA Resort	086
山西张壁古堡温泉养生度假区	
Kashi North Lake Ecological Park Landscape Planning and Design	092
喀什北湖生态公园景观规划概念设计	
Dalian Software Park Donggou Mountain Park	110
大连软件园东沟山体公园	
Santorini Hotel Landscape Conceptual Design	118
圣托里尼酒店景观概念设计	
Planning of Nanshufeng King of Medicine Health Preservation Valley	124
南树峰药王养生谷	

The Concept Planning of Yangjiang Spring Resort	128
阳江温泉度假村	
Shenzhen Aegea • Holiday Mansion	134
深圳爱琴海 • 假日公馆	
Hefei Lakefront Forest Park	142
合肥滨湖森林公园	
Taizhou OCT Hot Spring SPA Landscape	150
泰州华侨城温泉 SPA 景观	

Urban Planning 城市规划

Kunlun Rainbow Landscape Design in Hecheng Town, Jiangmen City	164
江门市鹤城镇昆仑彩虹景观设计	
Luzhou City Xueshishan Park	174
泸州市学士山公园	
Jiuhuashan Animation Theme Park	182
九华山动漫主题乐园	
China (Chongqing) International Garden Expo	188
中国（重庆）国际园林博览园	

Public Landscape 公共景观

South Bank Riverside Scenic Zone of Zhengshui River, Hengyang	198
衡阳蒸水河南岸滨江风光带	
Hebei Qian'an City Huangtaishan Park	202
河北省迁安市黄台山公园	
Linyi International Sculpture Park	208
临沂国际雕塑公园	
Landscape Project of Huangshi Magnetic Lake	218
黄石磁湖湖景工程	
Shenzhen OCT East	230
深圳东部华侨城	
Shenzhen Shekou Taizi Road	238
深圳蛇口太子路	
Tianjin Cultural Park	244
天津文化中心	

Eco Measure
生态措施

Simple Appearance
简约形态

Space Sequence
空间序列

SCI-TECH PARK LANDSCAPE 科技园区景观

MODERN SIMPLE STYLE 现代简约风格

KEY WORDS 关键词

THEME FEATURES 主题特色

HYDROPHILIC CHARACTER 亲水特性

LANDSCAPE NODE 景观节点

Location: Nanjing, Jiangsu

Developer: Nanjing Estun Automation Technology Co., Ltd.

Landscape Design: A&I International

Chief Designer: Cao Yuying

Design Team: Lian Jiajia, Sun Jie

Land Area: 43,324 m²

Total Floor Area: 90,000 m²

项目地点: 江苏省南京市

开 发 商: 南京埃斯顿自动控制技术有限公司

景观设计: 安道国际

主创设计师: 曹宇英

设计团队: 连佳佳 孙杰

建筑用地: 43 324 m²

总建筑面积: 90 000 m²

Factory Complex of Nanjing Estun Automation Technology Co., Ltd.

南京埃斯顿自动控制技术 有限公司厂区

FEATURES 项目亮点

The design in modern, simple and novel language builds an architectural image with strong style characteristic and appeal, and a graceful garden environment.

通过现代、简洁且新颖的设计语言，营造一个风格特征强烈、具有感染力的建筑形象和优美的园区环境。







Overview 项目概况

The project land is a plot of industrial land located in Jiangning District, Nanjing, and east to Shuige Road, south to Huayuan Street. It is 260 m long in west and east direction, 160 m in north and south direction, shaping in a rectangle with flat terrain. It connects to urban roads in east and south sides, adjacent to a road across a river, convenient for traffic.

本地块位于南京市江宁区，东至水阁路、南至花园街，用地性质为工业用地。地块东西长约260 m，南北长约160 m，近长方形用地，现状地形平坦。地块东、南边与城市道路相接，西侧隔小河道与道路相邻，交通便利。

Design Goal 设计目标

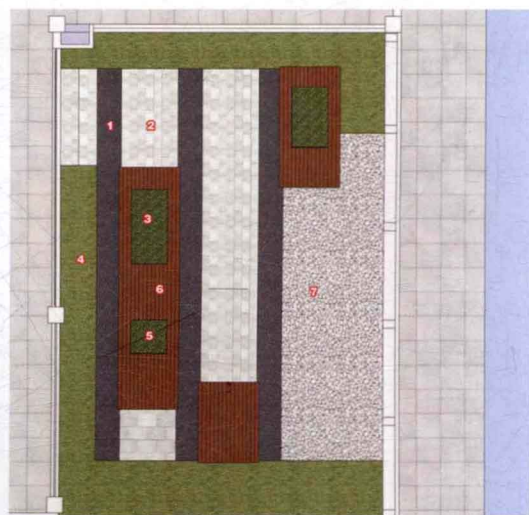
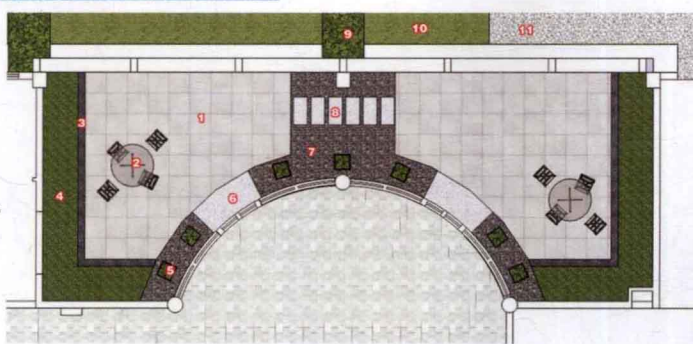
The design adopts natural way to arrange landscapes. Based on satisfying the production and office demands of modern enterprises, targeted at building a comfortable and graceful modern industrial park, the design in modern, simple and novel language builds an architectural image with strong style characteristic and appeal, and a graceful garden environment.

设计以自然的手法来布置景观。以满足现代工业企业生产办公需求为基础，以创造舒适优美的现代工业园区为目标，通过现代、简洁且新颖的设计语言，营造一个风格特征强烈、具有感染力的建筑形象和优美的园区环境。



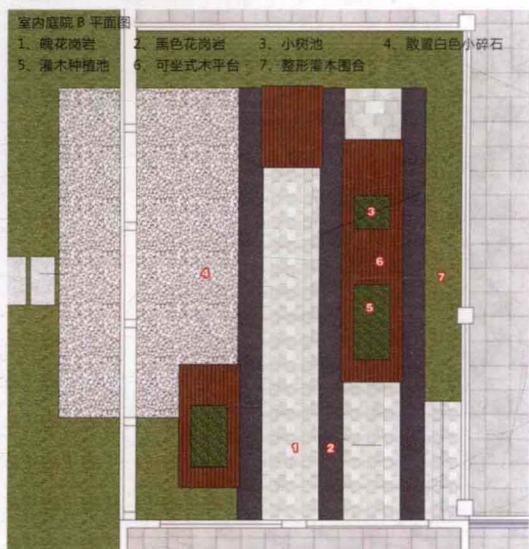
室内庭院 A 平面图

1. 休憩平台
2. 现代休憩座椅
3. 散置黑色卵石收边
4. 整形灌木
5. 可移动式现代不锈钢树池
6. 整石平桥
7. 散置黑色卵石铺地
8. 整石汀步
9. 室外整形灌木
10. 室外大草坪
11. 室外白色小碎石



室内庭院 C 平面图

1. 黑色花岗岩
2. 白色花岗岩
3. 灌木种植池
4. 整形灌木围合
5. 小树池
6. 可坐式木平台
7. 散置白色小碎石



室内庭院 B 平面图

1. 黑色花岗岩
2. 黑色花岗岩
3. 小树池
4. 散置白色小碎石
5. 灌木种植池
6. 可坐式木平台
7. 整形灌木围合



室内庭院 D 平面图

1. 特色跌水
2. 蓄水池
3. 楼梯 (原有)
4. 整石汀步
5. 散置黑色卵石
6. 休憩平台
7. 下沉式特色铺装
8. 花坛



Landscape Node 景观节点

The project planning has presented a modern factory area with theme and characteristic, through the comprehensive process of architectures, greening, roads, landmarks, and iconic articles. The large-scale waterscape in the south side effectively keeps away the interference of road noise, enhances the internal environment quality and forms a large-scale central green land between office complex building and workshops. A small green land is shaped in west side additionally, and the urban greening belt in east side has been taken into the block; greening in various zones has strengthened the landscape structure of the entire area, graceful and resources balancing.

The major landscape axis is in west and east direction is formed with the waterscape in

项目规划通过建筑、绿化、道路、地形以及标识性小品的综合处理，构筑一个具有主题和特色的现代厂区。地块南侧的大面积水景观有效隔离道路噪音的干扰，并对厂区的环境品质起到巨大的提升作用；在办公综合楼和车间中心形成较大规模的中心绿地，另在地块西侧形成一个小块绿地，地块东侧的城市绿化带也为区块所使用；各个区域的绿地强化了整个厂区优美均好的景观结构。

该项目的景观轴线是以厂区南侧水景形成东西景观主轴，并以通过办公综合楼和车间之

south side of the project area. With the green land between office building and workshops as the sub-axis, it connects each plot of green land, building an intertwined greening system with landscapes and roads.

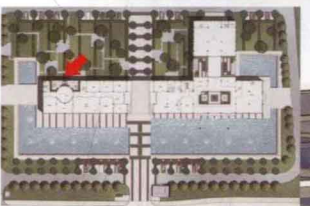
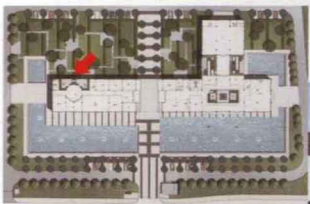
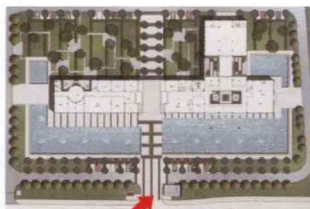
Articles with cultural characters are set in proper positions to form humane landscape, improve enterprise cultural quality.

Landscape water system is processed with economical, ecological and environment-friendly technology, with great realistic possibility. The design highlights landscape hydrophilicity and accessibility under the requirements of being clean and beautiful.

间的绿地为次轴串联各个小型绿地，以景成点、以路成线，形成交织的网络状绿化体系。

项目在适当部位设置具有文化特征的小品，形成具有陶冶情操、修身养性功能的人文景观，有力提升企业的文化品质与底蕴。

景观水系采用经济、生态、环保的水处理技术，具有很强的现实可能性。同时，设计强调在满足洁净和美观的要求下，通过一定的设计手段实现景观的亲水性和可及性。





SCI-TECH PARK LANDSCAPE 科技园区景观

MODERN SIMPLE STYLE 现代简约风格

KEY WORDS 关键词

IMAGE SPACE 意象空间

ARTISTIC TEXTURE 艺术肌理

LANDSCAPE NODE 景观节点

Location: Ningbo, Zhejiang
Developer: Ningbo Chunxiao Development & Construction Co., Ltd.
Landscape Design: A&I International
Chief Designer: Zhao Difeng
Design Team: Yu Youxian, Jiao Qinghe
Total Landscape Area: 9,362 m²

项目地点: 浙江省宁波市
开发商: 宁波春晓开发建设有限公司
景观设计: 安道国际
首席设计师: 赵涤烽
设计团队: 余友贤 焦清合
总景观面积: 9 362 m²

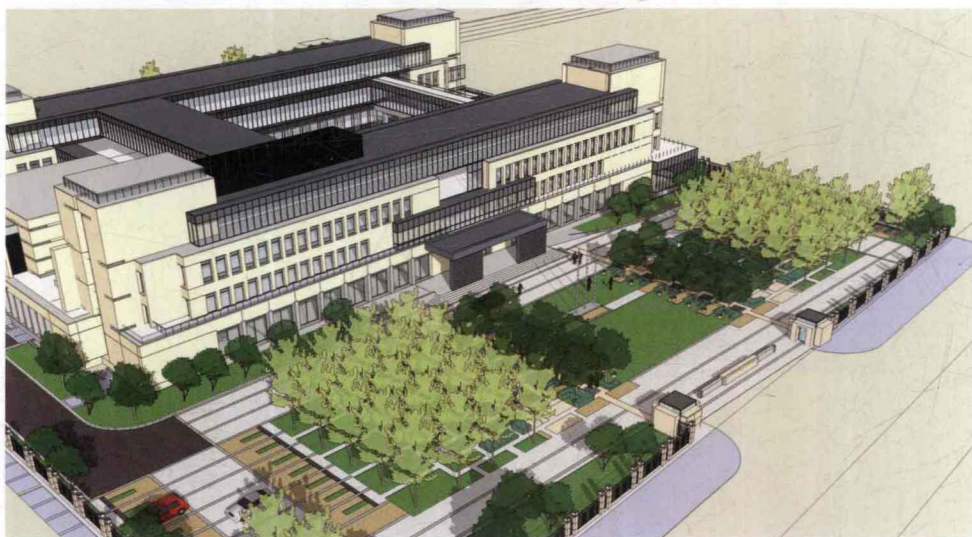
Ningbo Chunxiao Pioneering Service Center

宁波春晓创业服务中心

FEATURES 项目亮点

The designers' interpretation of ideal life environment is conveyed by an interesting image space, an enduring form constructed through language of lines, texture and colors.

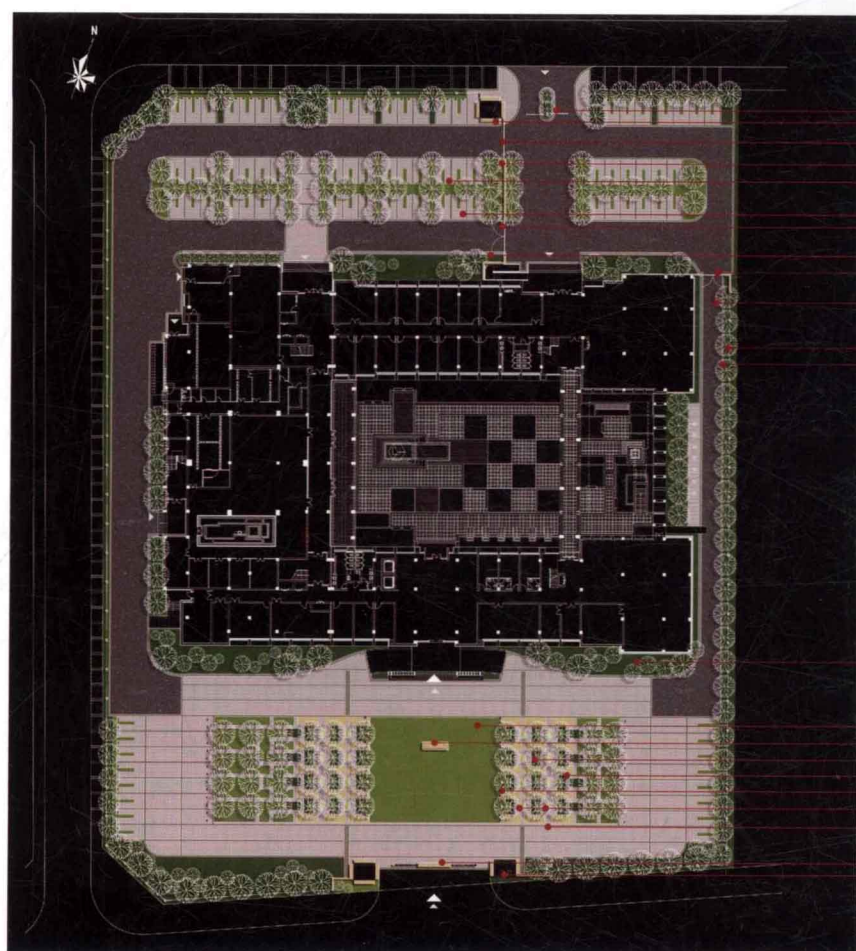
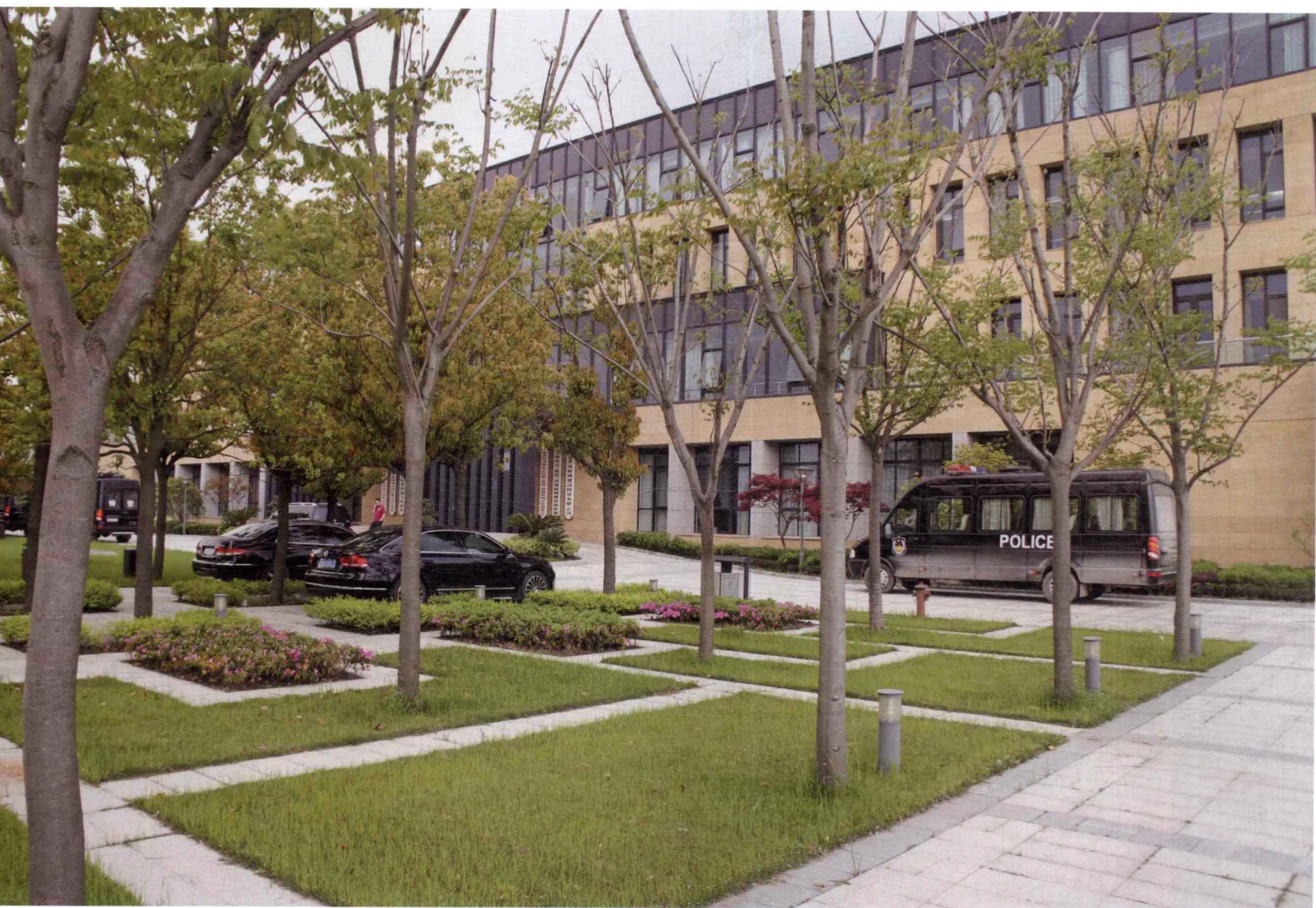
通过线条、肌理和色彩的语言构筑一个持久的形式，创造充满趣味性的意象空间，传达设计师对于理想生活环境的理解。





1. 特色正文体雕塑
2. 涌泉
3. 景观台阶
4. 银杏种植
5. 特色拉丝面格子铺
6. 休憩座椅
7. 灌木
8. 特色数字景观雕塑
9. 建筑内廊
10. 散铺鹅卵石
11. 特色灯饰
12. 台地
13. 景观雕塑小水景
14. 地下室入口
15. 创业服务中心景观主入口
16. 餐厅前廊
17. 台地式内庭
18. 景观小雕塑
19. 乔木种植

Site Plan 总平面图



机动车道闸
门卫亭
入口大门
围墙
车挡
停车位
临时消防通道大门
灌木
临时消防通道大门
沥青道路

围墙
灌木

灌木

耐践踏草皮
升旗台
树坑
树阵
草坪灯 (带春晓 Logo)
人行通道
机动车道
主入口大门
门卫亭

Asphalt Road Square Scheme
沥青道路广场方案

Overview 项目概况

The project covers the landscape design of plaza and building atrium.

项目景观设计包括广场景观设计和建筑中庭景观设计两个部分。

Design Thread 设计思路

The designers adopt language of lines, texture and colors to construct an enduring form, to deliver the realization of nature. The visual experience of spatial distance, closure, expansion or shrink is united with dynamic experience which refers to body movements in spaces. Elements are arranged in order to build an interesting image space, delivering designers' interpretation of ideal life environment.

设计师用线条、肌理和色彩的语言来构筑一个持久的形式，传承人们对自然的体悟。人们对空间的距离、封闭、扩展或收缩的视觉体验是与动感体验，即与人们在空间中的移动或穿过空间时的身体动作结合在一起的。在该项目中通过对元素的有序排列，创造充满趣味性的意象空间，传达设计师对于理想生活环境的理解。