

international landscape wind vane

国际景观风向标

李壮 编



清华大学出版社

清华大学出版社
TSINGHUA UNIVERSITY PRESS

图书在版编目 (CIP) 数据

国际景观风向标. 1 / 李壮编. — 天津: 天津大学出版社, 2013.3

ISBN 978-7-5618-4621-6

I. ①国… II. ①李… III. ①景观设计—作品集—世界—现代 IV. ①TU968.2

中国版本图书馆 CIP 数据核字 (2013) 第 031378 号

主 编: 李壮

责任编辑: 朱玉红

执行主编: 石晓艳

编 委: 李秀 刘云 韦成刚 高松 赵睿

翻 译: 国歌 樊喜强 王艳秋

编 辑: 肖娟

设 计: ⑦ 北京吉典博图文化传播有限公司

出版发行: 天津大学出版社

出版人: 杨欢

地 址: 天津市卫津路 92 号天津大学内 (邮编: 300072)

电 话: 发行部 022-27403647 邮购部 022-27402742

网 址: publish.tju.edu.cn

印 刷: 上海锦良印刷厂

经 销: 全国各地新华书店

开 本: 220mm×300mm

印 张: 42

字 数: 785 千

版 次: 2013 年 4 月第 1 版

印 次: 2013 年 4 月第 1 次

定 价: 736.00 元 (全两册)

T.R.O.P	008-019	Baan Sansuk
	020-027	Casa De La Flora
	028-041	Hilton Central Pattaya Hotel
	042-049	Noble Cube
	050-053	Noble Remix
	054-061	Privé by Sansiri
	062-069	Zense Gourmet Deck and Lounge Panorama
Surfacedesign, Inc.	072-075	Cow Hollow School Playground
	076-079	Liberty Hill Residence
	080-083	Peterson Residence
	084-087	Rieders Residence
Bjørbekk & Lindheim	090-093	AHUS Hospital
	094-097	Hundsund Community Centre
	098-101	The Nansen Park, Oslo
	102-105	Pilestredet Park
	106-111	Rolfsbukta Residential Area
	112-117	Tjuvholmen, Oslo
	118-121	Town Hall Park at Kjenn in Lørenskog
Klopfer Martin Design Group	124-127	The Steel Yard
LUR Paisajistik, S.L.	130-133	Alai Txolo
	134-137	Ametzagaina Park
	138-141	Jolastoki
	142-145	Orona
	146-149	Plaza Europa
	150-151	Riberas De Loiola
	152-155	Villa Aitz Toki
Rehwaldt	158-163	Bavarian State Garden Exhibition Burghausen 2004 — City Park
Landschaftsarchitekten	164-167	African Plains In the Dresden Zoo — Giraffes and Zebras
	168-171	KaLa Playground and Green Space in Berlin-Friedrichshain
	172-175	Jincheng Kinderpark
	176-179	Redesign Southern Tan Mill Island (Südliche Lohmühleninsel)
	180-183	ULAP Square, Berlin
	184-187	Nature in Waldkirchen 2007 — A Decentralised Exhibition Concept
Franchi Associati	190-193	Giardino degli Osservanti
	194-197	Giardino del Passeggio
	198-201	Orzali Park
	202-207	S. Anna Park
	208-211	Square in Castellina Marittima
Lango Hansen Landscape	214-217	Tenth Street Green Street
Architects	218-219	Block
	220-221	The Columbian Plaza
	222-227	Hotel Modera

CONTENTS

Shlomo Aronson Architects

- 228-231 Jon Storm Park
- 232-235 Story Mill Neighborhood
- 238-243 American Consulate
- 244-247 Har Adar #1
- 248-251 Har Adar #2
- 252-255 Herzeliya Park
- 256-259 Main Plaza, Israel Institute of Technology (Technion)
- 260-263 Student Union Entrance Plaza, Israel Institute of Technology (Technion)
- 264-267 Yad Vashem Holocaust Museum Complex

SLA

- 270-275 Charlotte Garden
- 276-279 CLOUD
- 280-283 Fredericia C — Temporary Park
- 284-287 North West Park, Copenhagen
- 288-291 The City Dune / SEB Bank — Acclimatized Urban Space in Copenhagen

The Office of James Burnett

- 294-297 Brockman Hall for Physics at Rice University
- 298-303 Sunnylands Center and Gardens
- 304-305 The Campus at Playa Vista

ARPAS — Arquitectos Paisagistas

Associados, Lda

- 308-311 Whaling Industry Museum

Ecocentrix

- 314-317 Beverly Hills Retreat
- 318-321 Encino Hills Spa Residence
- 322-325 PV Estate
- 326-333 Trenton Drive
- 334-335 West Adams Residence

international landscape wind vane

国际景观风向标

李壮 编



 天津大学出版社
TIANJIN UNIVERSITY PRESS

此为试读, 需要完整PDF请访问: www.ertongbook.com

图书在版编目 (CIP) 数据

国际景观风向标. 1 / 李壮编. — 天津: 天津大学出版社, 2013.3

ISBN 978-7-5618-4621-6

I. ①国… II. ①李… III. ①景观设计—作品集—世界—现代 IV. ①TU968.2

中国版本图书馆 CIP 数据核字 (2013) 第 031378 号

主 编: 李壮

责任编辑: 朱玉红

执行主编: 石晓艳

编 委: 李秀 刘云 韦成刚 高松 赵睿

翻 译: 国歌 樊喜强 王艳秋

编 辑: 肖娟

设 计: ⑦ 北京吉典博图文化传播有限公司

出版发行: 天津大学出版社

出版人: 杨欢

地 址: 天津市卫津路 92 号天津大学内 (邮编: 300072)

电 话: 发行部 022-27403647 邮购部 022-27402742

网 址: publish.tju.edu.cn

印 刷: 上海锦良印刷厂

经 销: 全国各地新华书店

开 本: 220mm×300mm

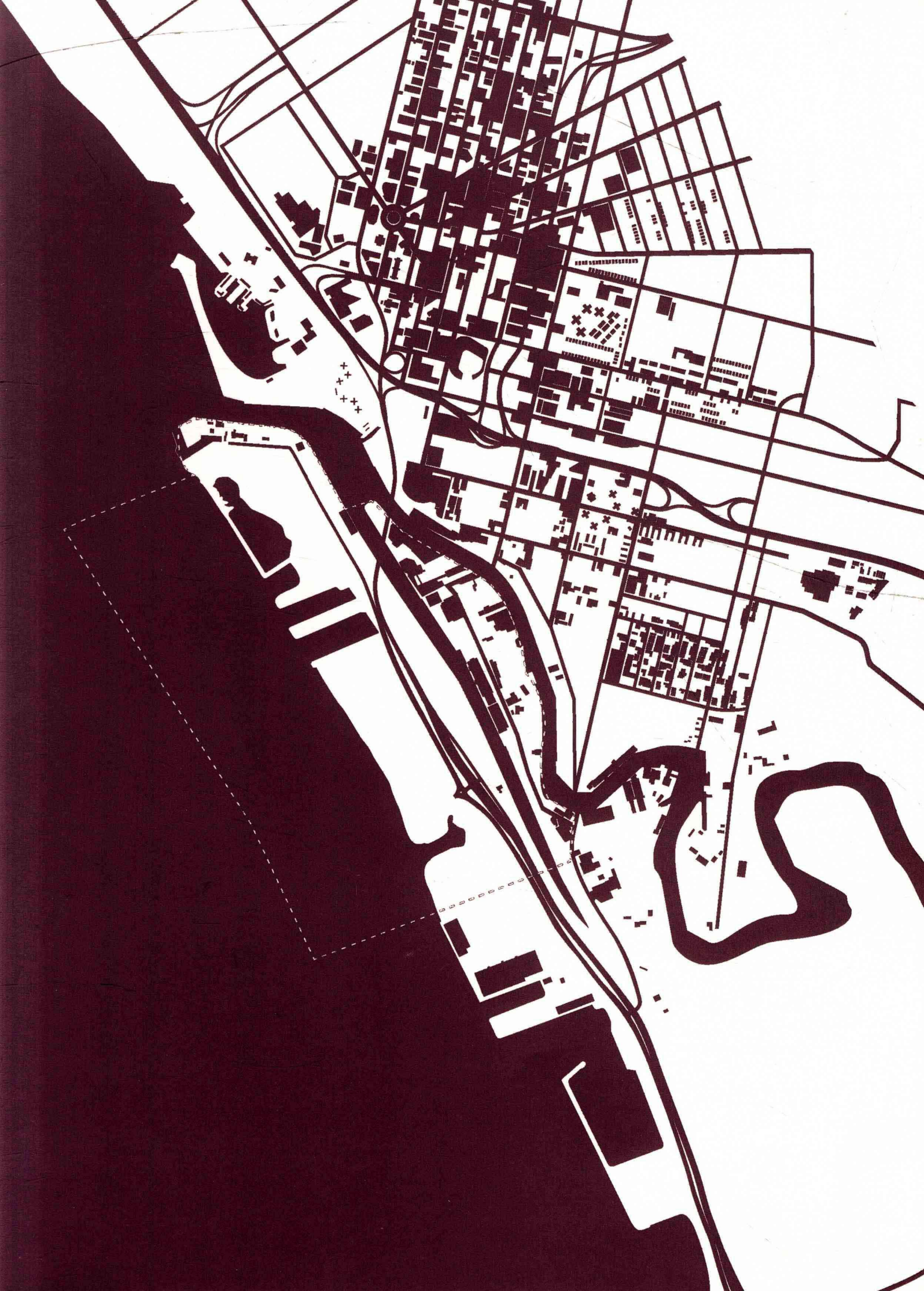
印 张: 42

字 数: 785 千

版 次: 2013 年 4 月第 1 版

印 次: 2013 年 4 月第 1 次

定 价: 736.00 元 (全两册)



T.R.O.P	008-019	Baan Sansuk
	020-027	Casa De La Flora
	028-041	Hilton Central Pattaya Hotel
	042-049	Noble Cube
	050-053	Noble Remix
	054-061	Privé by Sansiri
	062-069	Zense Gourmet Deck and Lounge Panorama
Surfacedesign, Inc.	072-075	Cow Hollow School Playground
	076-079	Liberty Hill Residence
	080-083	Peterson Residence
	084-087	Rieders Residence
Bjørbekk & Lindheim	090-093	AHUS Hospital
	094-097	Hundsund Community Centre
	098-101	The Nansen Park, Oslo
	102-105	Pilestredet Park
	106-111	Rolfsbukta Residential Area
	112-117	Tjuvholmen, Oslo
	118-121	Town Hall Park at Kjenn in Lørenskog
Klopfer Martin Design Group	124-127	The Steel Yard
LUR Paisajistik, S.L.	130-133	Alai Txolo
	134-137	Ametzagaina Park
	138-141	Jolastoki
	142-145	Orona
	146-149	Plaza Europa
	150-151	Riberas De Loiola
	152-155	Villa Aitz Toki
Rehwaldt	158-163	Bavarian State Garden Exhibition Burghausen 2004 — City Park
Landschaftsarchitekten	164-167	African Plains In the Dresden Zoo — Giraffes and Zebras
	168-171	KaLa Playground and Green Space in Berlin-Friedrichshain
	172-175	Jincheng Kinderpark
	176-179	Redesign Southern Tan Mill Island (Südliche Lohmühleninsel)
	180-183	ULAP Square, Berlin
	184-187	Nature in Waldkirchen 2007 — A Decentralised Exhibition Concept
Franchi Associati	190-193	Giardino degli Osservanti
	194-197	Giardino del Passeggio
	198-201	Orzali Park
	202-207	S. Anna Park
	208-211	Square in Castellina Marittima
Lango Hansen Landscape	214-217	Tenth Street Green Street
Architects	218-219	Block
	220-221	The Columbian Plaza
	222-227	Hotel Modera

CONTENTS

Shlomo Aronson Architects

- 228-231 Jon Storm Park
- 232-235 Story Mill Neighborhood
- 238-243 American Consulate
- 244-247 Har Adar #1
- 248-251 Har Adar #2
- 252-255 Herzeliya Park
- 256-259 Main Plaza, Israel Institute of Technology (Technion)
- 260-263 Student Union Entrance Plaza, Israel Institute of Technology (Technion)
- 264-267 Yad Vashem Holocaust Museum Complex

SLA

- 270-275 Charlotte Garden
- 276-279 CLOUD
- 280-283 Fredericia C — Temporary Park
- 284-287 North West Park, Copenhagen
- 288-291 The City Dune / SEB Bank — Acclimatized Urban Space in Copenhagen

The Office of James Burnett

- 294-297 Brockman Hall for Physics at Rice University
- 298-303 Sunnylands Center and Gardens
- 304-305 The Campus at Playa Vista

ARPAS — Arquitectos Paisagistas

Associados, Lda

- 308-311 Whaling Industry Museum

Ecocentrix

- 314-317 Beverly Hills Retreat
- 318-321 Encino Hills Spa Residence
- 322-325 PV Estate
- 326-333 Trenton Drive
- 334-335 West Adams Residence

Pok Kobkongsanti, MLAUD

Projects

Mandarin Oriental Resort and Spa, Hainan, China
 Keyne by Sansiri, Bangkok, Thailand
 PUNE by Sansiri, Bangkok, Thailand
 Marriott Hotel, Xiangshui Bay, Sanya, China
 M Phayathai, Bangkok, Thailand
 HSBC Green Library, Bangkok, Thailand
 J Residence, Bangkok, Thailand
 2009
 M Silom, Bangkok, Thailand
 Central Plaza Ladphrao Renovation, Bangkok, Thailand
 Central Plaza Rama 9, Bangkok, Thailand
 Suzhou Residences by KWG, Phase 1-4, Suzhou, China
 Marriott Boutique Hotel, Sanya, China
 Hideaway Hotel Chibi, China
 2008 Hilton Hotel Pattaya, Chonburi, Thailand
 Baan Sansuk by Sansiri, Hua Hin, Thailand
 Quattro by Sansiri, Bangkok, Thailand
 Zense Gourmet Deck and Lounge Panorama, Bangkok, Thailand
 Pinnacle Collection, High-end Residential Project, Sentosa, Singapore
 Noble Remix, Bangkok, Thailand
 Radisson Maldives, Maldives
 Jodhpur Hotel, Jodhpur, India
 Sense Sukhumvit, Bangkok, Thailand
 2007
 Central Plaza Chonburi, Chonburi, Thailand
 Noble Nano, Bangkok, Thailand
 Noble Cube, Bangkok, Thailand
 Noble Residence, Bangkok, Thailand
 Seascape, High-end Residence, Sentosa, Singapore
 Hotel Lotus, Hailing, China
 Prive' by Sansiri, High-end Residence, Bangkok, Thailand
 Preen by Sansiri, High-end Residence, Bangkok, Thailand
 Avora31, High-end Service Apartment, Sukhumvit 31, Bangkok, Thailand
 2005-2006
 W Hotel, Guangzhou, China
 The Four Seasons Resort and Spa, West Lake, Hangzhou, China
 Danang Sontra Resort and Spa, Danang, Vietnam
 One and Only Hotel, Cape Town, South Africa
 Park Hyatt Hotel, Ningbo, China
 Coral Island, Luxury Seaside Villas, Sentosa, Singapore
 Cosmos Luxury Highrise Residence, High-end Residential Project, Guangzhou, China
 Phoenix City, High-end Residential Project, Beijing, China
 2000-2004
 World Trade Center Master Plan, New York, USA
 Design Guideline for the Overall Appearance of the New World Trade Center
 21st Century Waterfront Park, Chattanooga, Tennessee, USA
 Waterfront Development Study Prepared for the City's 15 Years Plan
 Louisville Waterfront Development, Louisville, USA
 The Second Phase of the Award-winning Public Openspace
 Clinton Presidential Center, Little Rock, Arkansas, Kentucky, USA
 New Public Park and Library for the City of Little Rock, Arkansas, USA
 Main Street, University of Cincinnati, Ohio, USA
 The Main Openspace of the University



Pok Kobkongsanti

Pok Kobkongsanti was graduated from Graduate School of Design, Harvard University, in 2000. Since then, he had practiced with Mr. George Hargreaves of Hargreaves Associates and Mr. Bill Bensley of Bensley Design Studio. In 2007, he found T.R.O.P.: terrains + open space, with hope to develop a new ground in landscape architectural design. Currently, Pok and T.R.O.P have been working on projects throughout Asia Region.

For us, each project deserves its own identity.

T.R.O.P

T.R.O.P

T.R.O.P is an initial of terrains and open space. We are a landscape architectural design studio, with a team of designers and construction supervisors.

Led by Pok Kobkongsanti, who brings in years of experience in USA and Asia, our philosophy is to create a unique design for each project. We work closely with our clients during the design process to make sure that each project gets its own definition of the landscape architecture. For us, our design process is as important as the design itself.

Together with our clients, we have successfully defined landscape architectures that can respond to requirements of their users. Since 2007, T.R.O.P has been working on various kinds of projects throughout Asia Region.

Currently our works include hospitality, high-end residential, commercial and installation designs. Each of our works has its own character, which is different from one another.

Baan Sansuk

Baan Sansuk 民居

LOCATION: Thailand
项目地点: 泰国

AREA: 11,613m²
面积: 11 613 平方米

COMPLETION DATE: 2010
完成时间: 2010 年

PHOTOGRAPHER: Patarapol Jormkhanngen
摄影师: Patarapol Jormkhanngen

DESIGN DIRECTOR: Pok Kobkongsanti
设计总监: Pok Kobkongsanti

TEAM: Wasin Munepeerakul, Pakawat Varaphakdi, Kampon Prakobsajakul
团队: Wasin Munepeerakul, Pakawat Varaphakdi, Kampon Prakobsajakul

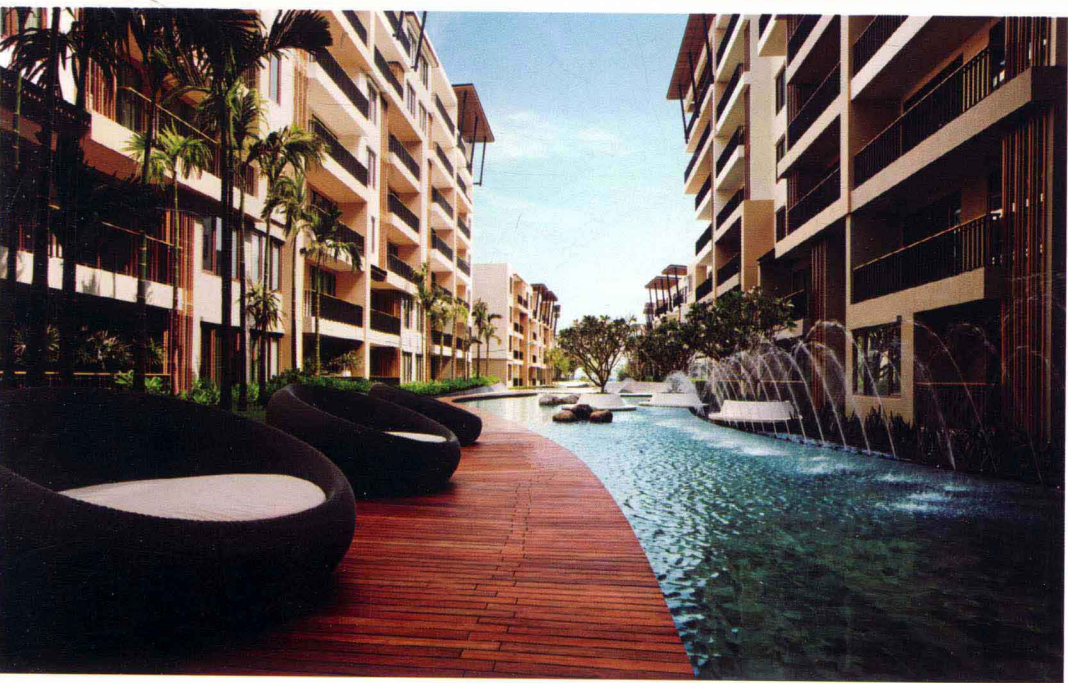
DESIGN COMPANY: T.R.O.P
设计公司: T.R.O.P

Baan Sansuk



Baan Sansuk is an exclusive residential project, located at Hua Hin, Thailand's most popular beach. The site is long, noodle-like with a small narrow side connected to the beach. There are two rows of buildings on both sides, leaving a long space in the middle of the site. Basically, most of the units, except the beach-front ones, do not have any ocean view. Instead, they are facing the opposite units.

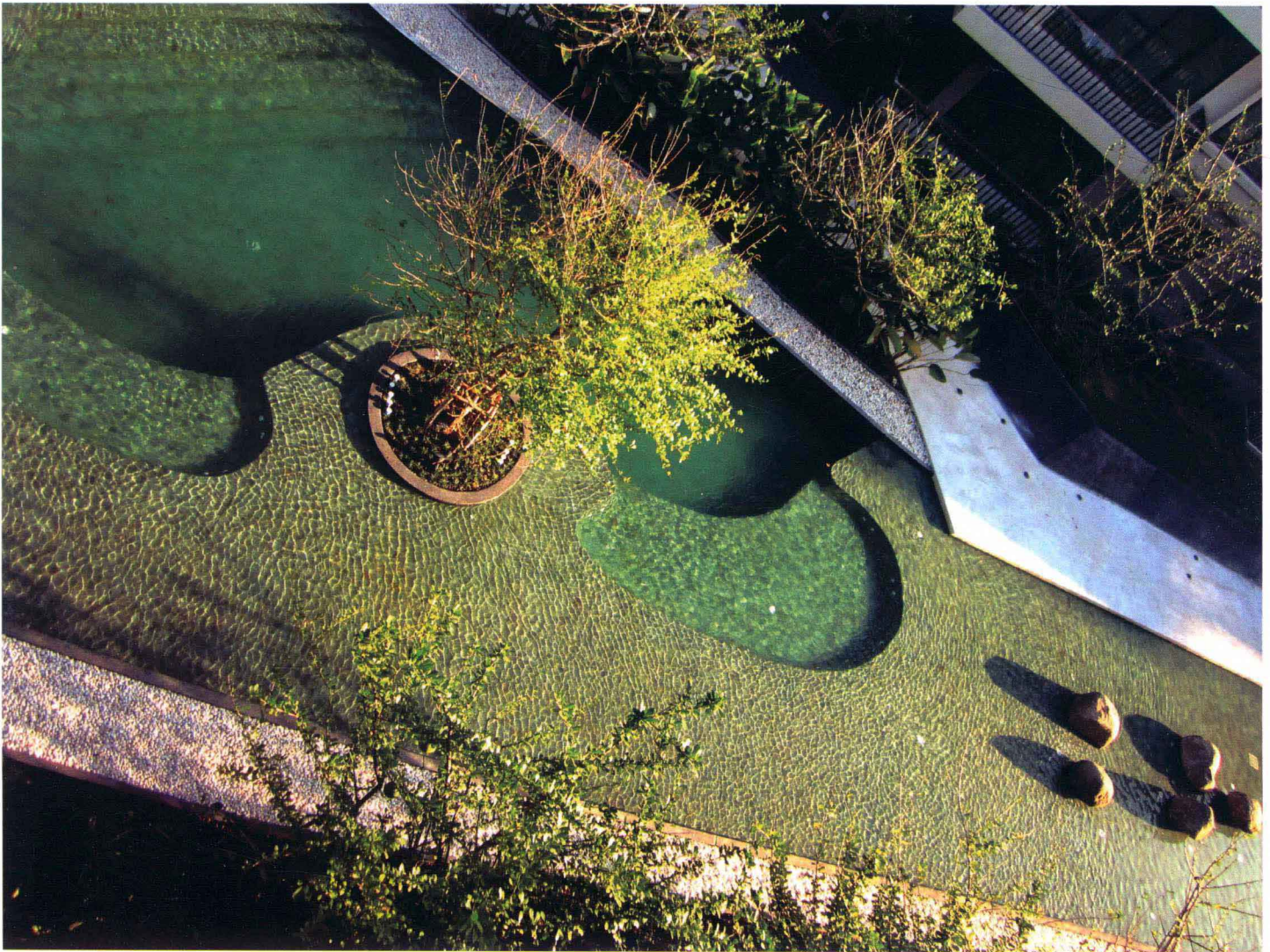
Baan Sansuk 是一个独一无二的民居项目，坐落于泰国非常受欢迎的海滩——华欣。场地是长条形的，就像面条一样，小而狭窄的一边连接着海滩。在场地的两边分别排列着两排建筑，中间则留有长条形的空地。基本上，大多数的单元住宅，除了靠近海滩的那些之外，并不能看到海洋风光。相反，它们朝向对面的单元房间。

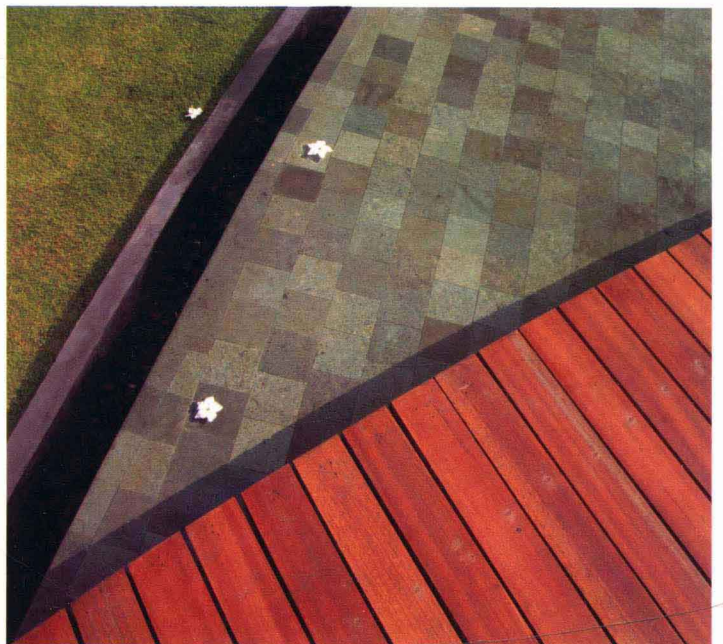
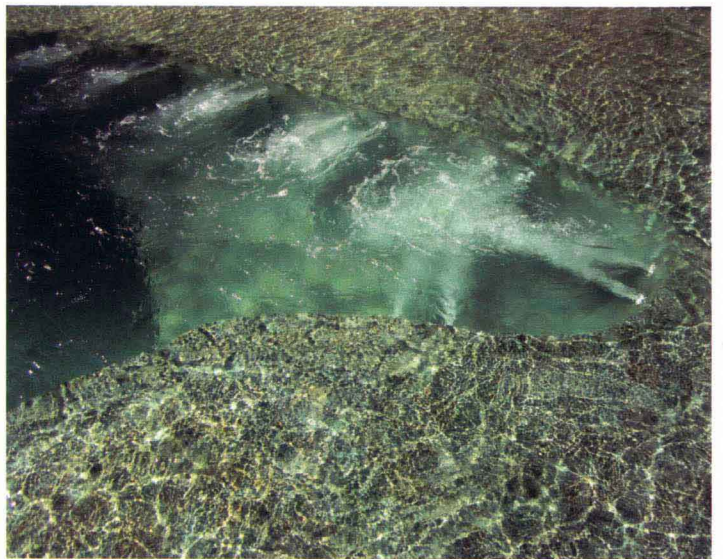
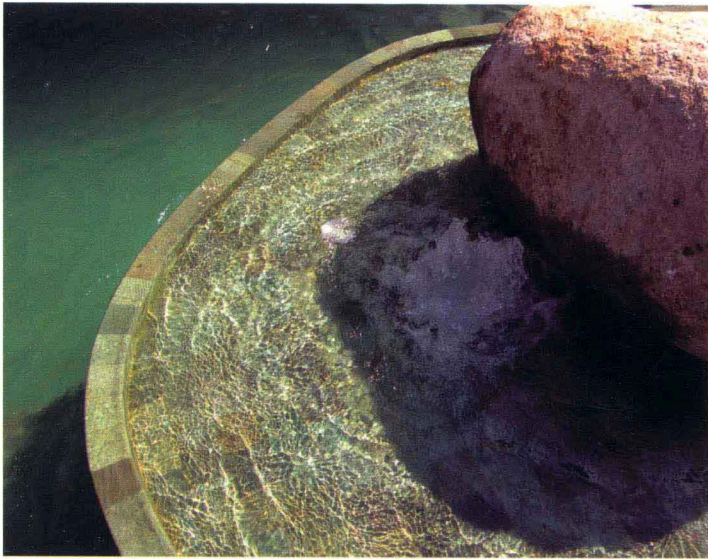


Our first move is to bring "the view" into the residence instead. Our inspiration of "the view" comes from the location of the project. Hua Hin, in Thai, means stone. The name comes from the natural stone boulders in its beach area. So we proposed a series of swimming pools from the lobby to the beach area, a total length of 230 m,

我们行动的第一步是将“风景”引入住宅区。我们关于“风景”设计的灵感来源于这个项目的所在地。华欣，在泰语里意为石头。这个名字来源于坐落在华欣海滩区域的自然巨石群。所以，我们提议建设一系列的游泳池，从场所的大厅一直延伸到海滩区域，总共长 230 米。







The pools are divided into several parts, with different functions like Reflecting Pool, Kids Pool, Transitional Pool, Jacuzzi Pool and Main Pool. At some certain area, we strategically place natural stone boulders to mimic the famous local beach. The result is a breath-taking water landscape, with different water characters from one end of the site to another. These pools are not just for eye-pleasure, but they also serve as the pools for everyone in the family.

游泳池按其不同的功能被分为几大部分, 如将神殿倒映于水中的石砌水池、儿童游泳池、过渡游泳池、配有冲浪按摩浴缸的游泳池和主游泳池。在某些特定的区域, 我们策略性地放置了自然石群去模仿当地著名的海滩景观。我们的设计带来了令人惊叹的水体景观效果, 不同的水体特征从场地的一端变化到另一端。设置这些游泳池的目的不仅是为了带来视觉上的愉悦, 同时, 它们还可服务于家庭中的每位成员。

