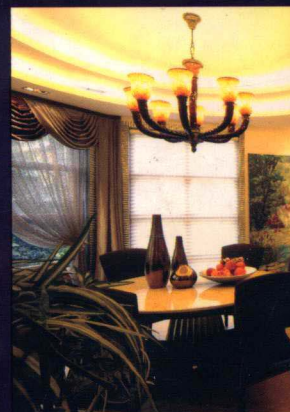




悟 INSPIRATION 室内设计

·设计 Design



图书在版编目 (CIP) 数据

悟 · 设计 / 方峻著 - 哈尔滨: 黑龙江科学技术出版社 .2007.2

ISBN978-7-5388-5293-6

I . 悟 ... II . 方 ... III . 室内设计 - 作品集 - 中国
现代 IV .IC238

中国版本图书馆 CIP 数据核字 (2007) 第 004341 号

责任编辑 曲家东 蔡伟俊
封面设计 绿色之春文化传播有限公司
版式设计 绿色之春文化传播有限公司

悟 · 设计 INSPSRATION DESIGN WU · SHEJI

方峻 著

出版 黑龙江科学技术出版社
(150001 哈尔滨市南岗区建设街 41 号)
电话 (0451)53642106 传真 (0451)53642143(发行部)
印刷 广州市一丰印刷有限公司
开本 635 x 965 1/8
印张 30
版次 2007 年 2 月第一版 · 2007 年 2 月第一次印刷
印数 2 000
书号 ISBN 978-7-5388-5293-6/TU · 571
定价 198.00 元

TU238/201

悟

006 商用空间

008 冰火酒吧 ICE FIRE CLUB

024 典藏造型 DIAN CANG MODEL

038 意念美发 YI NIAN SALON

058 尊贵家私 HONORABLE FURNITURE

072 海兰晴天 SUNNY BLUE SEA

●
设计

080 住宅空间

090 领秀别墅 LIN XIU VILLA

122 山语间示范单位 SHAN YU SHOW FLAT

142 华楠半岛别墅 HUA NAN ISLANDS

154 锦城豪庭示范单位 JIN CHENG SHOW FLAT

168 锦城豪庭别墅 JIN CHENG PALACE

192 锦镇示范单位 JIN ZHEN SHOW FLAT

212 银都领地 YIN DU LING DI

226 中海国际 'E' 型示范单位 "E" STYLE SHOW

自序

PREFACE

方法设计——设计的方法

2006年初，应出版商之邀出版这部室内设计作品集时，才发现自己不知不觉从事室内设计作品集已超过10年时光。“十年磨一剑”，霜刃却早已拭过，个中酸甜苦辣百味不敢妄言尝遍，却也是刻骨铭心。沧海十年，许多东西都在“谈笑间，灰飞烟灭”了，始终未曾改变的是自己的心态，自己对设计的理解：只有对的设计方向，没有对的设计方法，即有了正确的目标方向，无论用什么方法，只要坚持执著不放弃，一定能达到目的。很感谢策划人此次的集结出版，让我有机会和朋友们交换自己的心得和方法，更希望能得到大家的不吝指教。曾有前辈戏称：方峻，你的设计方法有如街头篮球，花样繁多，但你有一个不变的进攻意念，会比正规训练出来的队员辛苦很多，但还是能进球。

The art of design

At the beginning of 2006, when the publisher invited me to publish this ten-year collection of my design, I suddenly realized that I have been an architecture designer for almost a decade. There is an old Chinese saying “It takes ten years to make a sword polished.” I knew had already polished my sword in the world of design. In this process, although I couldn't say that I had experienced everything, I should admit that all these memories would be kept in mind forever. Ten years, it's not a short period to write about, many things vanished within the trace of time, but I never change my attitude and understanding towards design: there's only the right direction of design, no right method of design. No matter what kind of method you use, if you stick on your direction, you will surely achieve the goal ultimately.

I deeply appreciate the publisher's invitation; it gave me a chance to share my understanding on design with others. And I hope I can get some feedback about this ten-year collection. Some colleague who worked even longer than me once joked with me: “Fangjun, your design methods just like the way the street boys play street basketball. There're so many unusual ways for you to shoot. It maybe tougher for you to shoot a basket compared to a trained player, but as you always bear a clear goal in your mind, you always make it in your own way.”

了解客户的方法：“也许我做不到最好，但我能做到最适合你”，这是个多元的社会，更是个性张扬的时代。了解客户的需要是“适合”的关键，制作一份详尽的问卷调查表，不是为“窥私”，只是为了“适合”，只是为了有的放矢，尽管它涉及到个人审美观（标准）。

方案设计的展开方法：根据客户所填写的个性化资料与项目的实际情况，分析其朝向、景观、结构、上下水位、强弱电系统，更重要的是结合客户的常住人口结构、生活习惯、生活需要，规划出适合客户的2~3个平面布置方案，同时亦应确定1~2种设计风格，按其风格展开后，初步确定主要空间的家具、灯饰、布艺、工艺品的概念图和重要的立面做法及其材料样品。再结合前述的设计理念，仔细分析空间的色彩搭配，形成手绘草图以验证自己的想法，最终把它们整理出来作为与客户讨论方案的第一手材料。但此时千万不要忘记按经验为其他设备专业预留其需要位置 and 空间。

设计预算的控制方法：概念设计通过后，很多设计师容易忽略的就是：“量入而出”。此阶段应首先明确客户拟投入的预算，而此时设计师应根据业主的投入提出具有参考价值的预算，包括总投资额与各分项的习惯比例值（通常客户都有小投入大效果的想法，设计师应提出合理而理性的依据，与业主磋商并最后达成共识）。当客户只有一定的预算额的时候，如何合理分配资金就成了设计师工作的一部分了。

各分项专业的协调方法：为避免深入设计时与其他专业产生冲突，各专业设备应在方案深入前介入，专业设备包括上下水、强弱电、冷暖空调、智能化系统、消防系统、电梯系统、中央除湿除尘系统等。各专业的综合协调应由一个机电顾问公司或工程师来统筹并与设计师对接，否则工程在实施时会出现顾此失彼的情况。设计师通过对各专业的《设计指引》提出开关插座的位置图、灯光照明位置图、智能弱电位置图、卫浴设备位置图等。更重要的是机电顾问公司或工程师能很好的把握机电工程专业的系统最优化及工程实施的技术质量。对于设计师的室内设计机电技术参数要求，大家可查阅相关的技术工具书，在此不再详述。

方案图的深化和配饰方法：在概念设计的框架下逐步深化各空间的设计细节并不困难，在此阶段需要有清晰的思维，配合着各机电专业的位置，深化各个设计细节，要特别重视是光效果的选择。此外，配饰工作更是具有“画龙点睛”的重要作用。各位置的家具、饰画、灯具、布艺、工艺品的大小、位置、尺寸比例都是缺一不可的整体，相互关连的组合如果不靠一个有机的系统去规划，而是凭空臆想，那样绝不可能完成一个成功的作品。所以我们大家都应充分尊重专业设计公司的意见（有关包装设计的设计文件可咨询各大专业配饰设计公司）。

施工图的系统方法：严谨的施工图能保证工程施工准确完整地反映设计师的原创效果，即图纸执行的唯一性。施工图另一项更重要的作用在于控制工程造价，有经验的设计师能根据工艺的做法和材料的损耗（即开料情况）严格清晰地控制每一个结点图，如大理石的尺寸和排列，墙纸的图案对版，木材料的原规格组合方法等，这不仅为工程投标提供了针对性，更为质量保障提供了依据，含糊不清的施工图纸也许能节约设计时间，却会带来许多不可估量的损耗和浪费。

So, I hope to share the following “out of routine” methods with you:

The art of knowing the customers:” Maybe my design is not the best, but it must be the most suitable for you.” It ‘s of crucial importance to know what the clients want at this era which emphasizes diversity and character. We will conduct a survey on target customer which includes some private information as living habit, preference, education and cultural background. The detailed survey is not for knowing the privacy of the customer, but to make the design suitable and unique.

The art of running the design: To begin with, based on the personal data and the circumstance of the project, we would begin to analyze the direction, scene, structure, water and electric systems



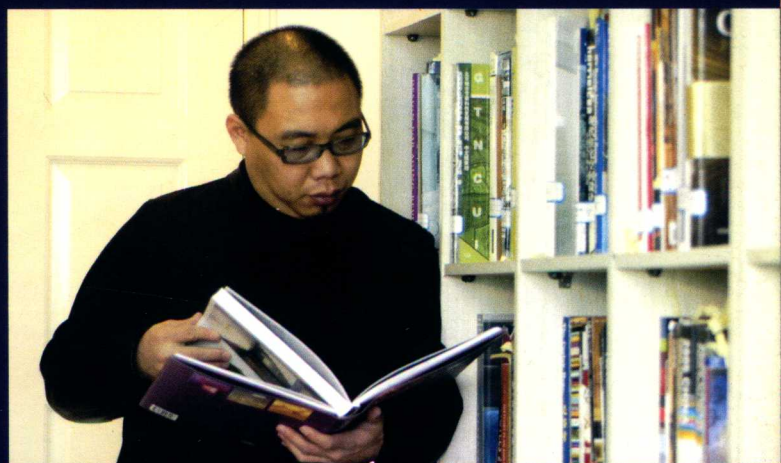
the design is suggested.

The art of controlling the budget: After the approval of the design concept, designers sometimes neglect to control the budget when running the project. In this stage, the designer should make a budget based on the input of the client, which includes both total input and ratio of each item. (Usually, the customer would like to maximize the effect by minimizing the investment. The designer should discuss with the client with supporting arguments, and then come to a consensus with the owner.) If the client only has certain amount of budget, it’ s the designer’ s responsibility to distribute the money reasonably.

The art of cooperating with other professions: In order to avoid conflict with other professions in the in-depth design, the design should include other equipments in an early stage. For instance, equipments as water system, electric system, air-conditioner, intellectualized control system, fire protection, elevator, dehumidify and dust-adsorbed system should be spotted early. To control the above mention equipments, a professional engineer or consultant should cooperate with the designer throughout the project, or else chaos may accrue. Based on the design instruction of the equipments, the location of the electrical outlet, lighting, intellectualized electric-savvy system and bath system should be fixed. The benefit of including professional consultant or engineer comes from his/her ability to maximize the advantages and yet control the quality. As the requirement of the parameter for indoor equipment, there are certain professional references so I won’ t list them right now.

The art of decoration: I believe carry out the in-depth detail design under the framework of the design concept is not a tough task.

to carry out our blueprint. What’ s more important is to design two to three suitable ichnographies and one to two design styles based on the family number, living habit and personal requirements. Secondly, the next step is to plan the decoration roughly. For instance, we will make a blueprint on furniture, lighting, craftwork and find samples of them. Thirdly, sketch of the design should be done on the analysis on the outcome of color and the overall concept. The very sketch is the data we need to discuss with our client. Ground on my experience, some space left for other equipments in



So in this stage, the designer should keep his/her mind clear, take the equipment into consideration and then detail the design. Attention should be pay greatly to the optical effect. Furthermore, the decorations sometime play the role of awakening the whole design. So the sizes and locations of furniture, fresco, lighting and craftwork should coordinate and interact with each other. This requires an overall concept of the decoration; a successful project never comes out by random decisions. As a result, the advices from professional design company are truly helpful. (Reference of decoration can be found in some professional decoration design company.)

The art of consisting with the blueprint: A precise blueprint helps a lot. Firstly, a precise blueprint on construction can guarantee the outcome consist with the original design, which is to carry out exactly as what the blueprint requires. In addition, a precise blueprint could control the budget well. Experienced designer will control each item accurately based on the technique and the material in the blueprint. For instance, the size and arrange order of the marble, the pattern of the wallpaper and assemble way of the wood and etc. All in all, a precise blueprint not only provides the bid with focus, but also guarantees the quality of the project. By contrast, a vague blueprint may save some time at the early stage, but it will eventually cause some trouble throughout the project.

图书在版编目 (CIP) 数据

悟 · 设计 / 方峻著 - 哈尔滨: 黑龙江科学技术出版社 .2007.2

ISBN978-7-5388-5293-6

I . 悟 ... II . 方 ... III . 室内设计 - 作品集 - 中国
现代 IV .IC238

中国版本图书馆 CIP 数据核字 (2007) 第 004341 号

责任编辑 曲家东 蔡伟俊
封面设计 绿色之春文化传播有限公司
版式设计 绿色之春文化传播有限公司

悟 · 设计 INSPIRATION DESIGN WU · SHEJI

方峻 著

出版 黑龙江科学技术出版社
(150001 哈尔滨市南岗区建设街 41 号)
电话 (0451)53642106 传真 (0451)53642143(发行部)
印刷 广州市一丰印刷有限公司
开本 635 x 965 1/8
印张 30
版次 2007 年 2 月第一版 · 2007 年 2 月第一次印刷
印数 2 000
书号 ISBN 978-7-5388-5293-6/TU · 571
定价 198.00 元

TU238/201

悟

006 商用空间

008 冰火酒吧 ICE FIRE CLUB

024 典藏造型 DIAN CANG MODEL

038 意念美发 YI NIAN SALON

058 尊贵家私 HONORABLE FURNITURE

072 海兰晴天 SUNNY BLUE SEA

●
设计

080 住宅空间

090 领秀别墅 LIN XIU VILLA

122 山语间示范单位 SHAN YU SHOW FLAT

142 华楠半岛别墅 HUA NAN ISLANDS

154 锦城豪庭示范单位 JIN CHENG SHOW FLAT

168 锦城豪庭别墅 JIN CHENG PALACE

192 锦镇示范单位 JIN ZHEN SHOW FLAT

212 银都领地 YIN DU LING DI

226 中海国际 ‘E’ 型示范单位 “E” STYLE SHOW



商用空间





经典案例剖析
business space
ANALYSE OF EXCELLENT PROJECTS





A N A L Y S E O F E X C E

经典案例剖析



冰火酒吧

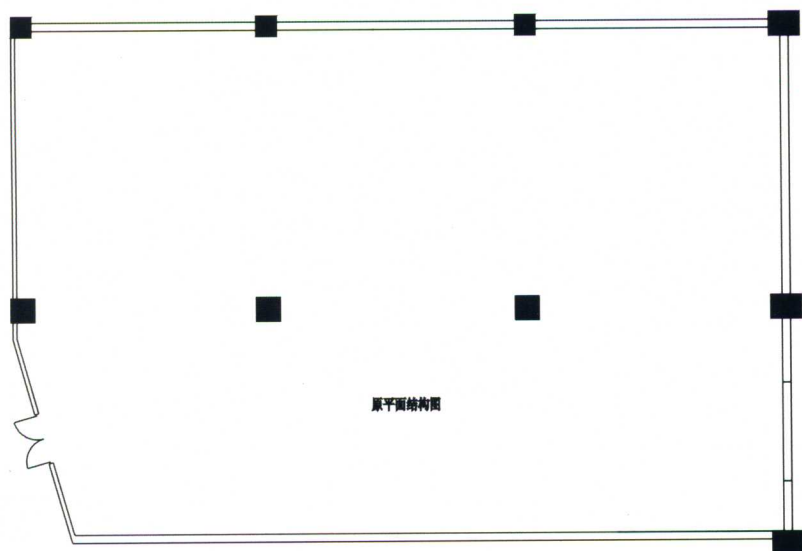
Ice Fire Bar

业态：商用空间
设计风格：现代时尚
套内面积：680平方米
主要用料：LED灯、软包、镜面不锈钢、
金属马赛克、成品压克力

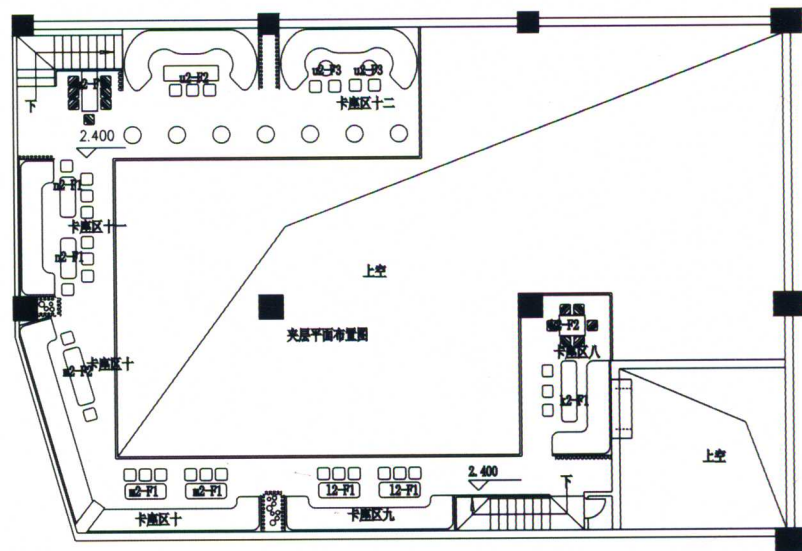
ELEMENT PROJECTS

冰火酒吧

冰火酒吧位于成熟而热闹的酒吧中心区，地理位置不错，但有面积上的缺憾。设计师最后为酒吧确定的主题是冰与火。项目本身的预算并不充足，在灯光与音响分别投入了不少资金后，剩下不多的预算为工程建设带来较大的困难，于是设计师不得不调整方案，此时时间紧迫亦使业主与设计师的沟通出现了不同程度脱节，其实业主与设计师的默契与执着的一致性设计方案成功的关键。



原平面图

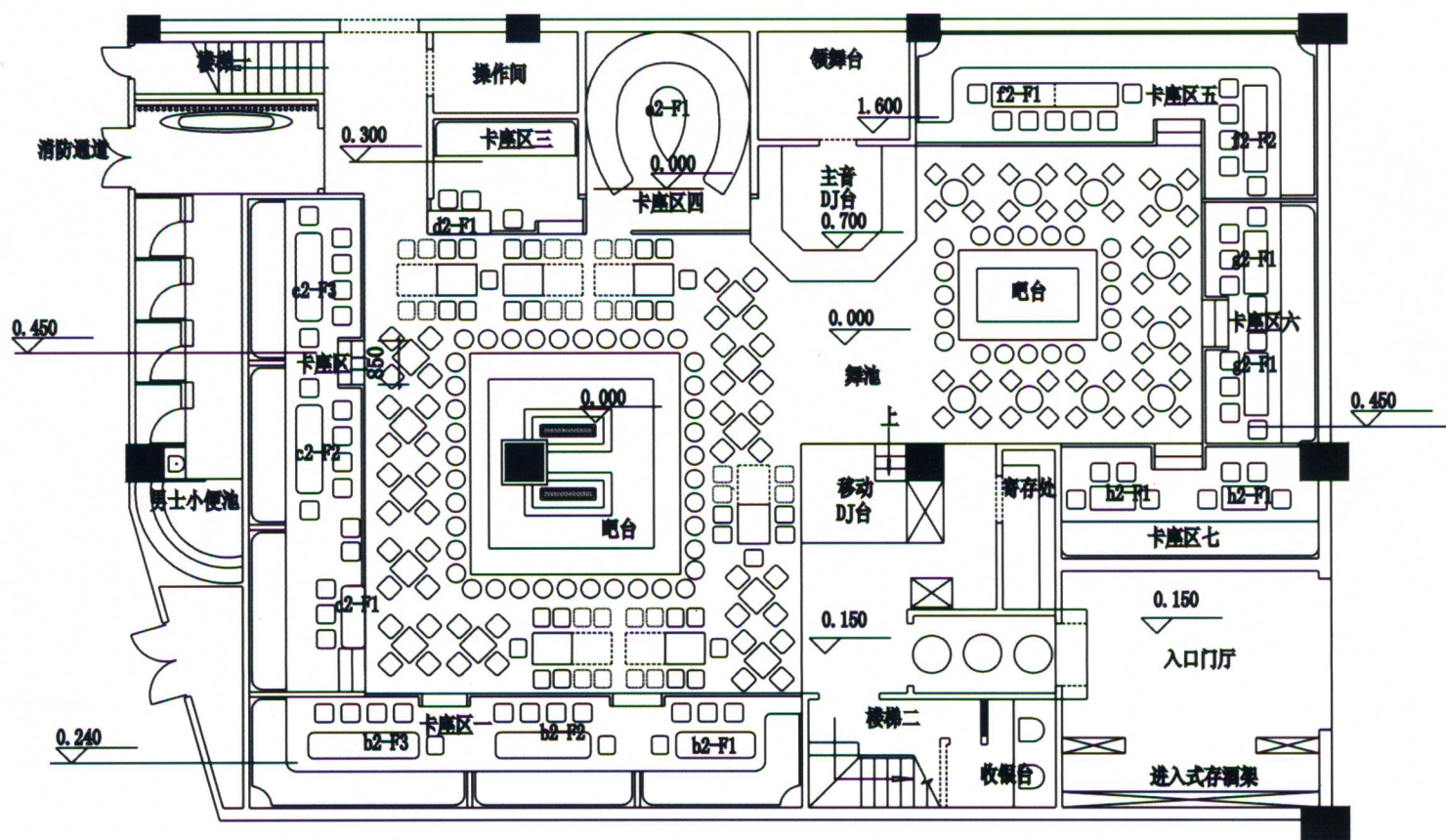


夹层平面布置图

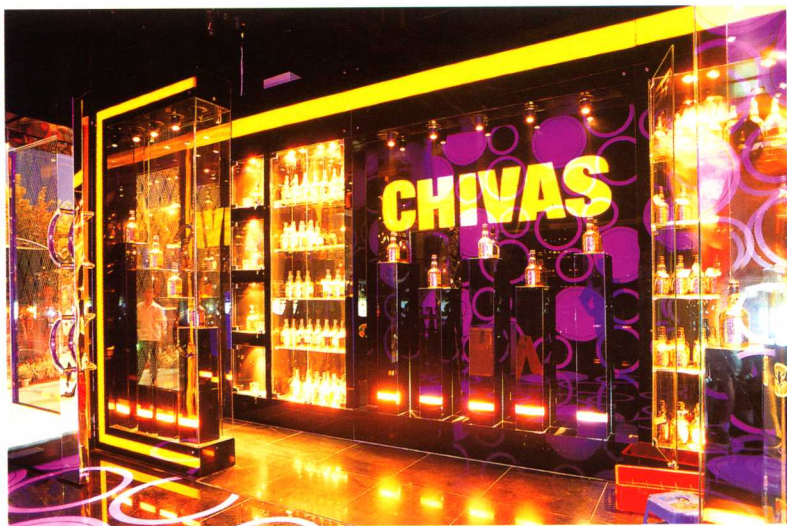


The ice and fire bar located in the middle of a mature and crowded bar area. It's quite a good geographic spot but has some shortcoming in terms of acreage. The designer styled the theme of the bar to be ice and fire at last. As the lighting and sounding took up a great portion of money, and the original budget was tight, the project encountered some difficulties with not enough budget. As a result, the designer had to adjust the plan. Meanwhile, the tight schedule had caused some problems in the communication between the designer and the owner. Actually, the consistency and persistence the owner and the designer is the key factor for the success of a project.

Ice Fire Bar



平面布置图





从电脑表现图的预演到项目竣工的效果可以充分体现出对设计师意念的执行力

We can see the almost the same results between the rendering drawings and completed project. It proved the execution of the designer's concept.

