

人体 断面解剖图谱

第2版

ATLAS OF
• THE HEAD AND NECK
HUMAN
• THE THORAX
SECTIONAL
• THE ABDOMEN
ANATOMY
• THE PELVIS

主编 金连弘 张雅芳
主审 王云祥

 人民卫生出版社
PEOPLE'S MEDICAL PUBLISHING HOUSE

人体断面解剖图谱

ATLAS OF HUMAN SECTIONAL ANATOMY

第 2 版

主 编 金连弘 张雅芳

副主编 柏春枝 张向光

主 审 王云祥

绘画 摄影 张海峰

编 者 马 晶 张向光 张雅芳 金连弘 柏冰雪

柏春枝 海里斯 韩 振 谢遵江

人民卫生出版社

图书在版编目 (CIP) 数据

人体断面解剖图谱/金连弘等主编. —2 版. —北京:
人民卫生出版社, 2012. 12

ISBN 978-7-117-16398-9

I. ①人… II. ①金… III. ①人体解剖学-断面解剖
学-图谱 IV. ①R322-64

中国版本图书馆 CIP 数据核字(2012)第 224840 号

人卫社官网	www.pmph.com	出版物查询, 在线购书
人卫医学网	www.ipmph.com	医学考试辅导, 医学数 据库服务, 医学教育资 源, 大众健康资讯

版权所有, 侵权必究!

人体断面解剖图谱

第 2 版

主 编: 金连弘 张雅芳

出版发行: 人民卫生出版社 (中继线 010-59780011)

地 址: 北京市朝阳区潘家园南里 19 号

邮 编: 100021

E - mail: pmph@pmph.com

购书热线: 010-67605754 010-65264830

010-59787586 010-59787592

印 刷: 北京汇林印务有限公司

经 销: 新华书店

开 本: 889×1194 1/16 印张: 33

字 数: 1022 千字

版 次: 2005 年 1 月第 1 版 2012 年 12 月第 2 版第 2 次印刷

标准书号: ISBN 978-7-117-16398-9/R·16399

定 价: 260.00 元

打击盗版举报电话: 010-59787491 E-mail: WQ@pmph.com

(凡属印装质量问题请与本社销售中心联系退换)



主编简介

金连弘,男,1946年9月出生,1970年毕业于哈尔滨医科大学,1982年研究生班毕业。2003年获澳大利亚荣誉科学博士学位。现任哈尔滨医科大学组织学与胚胎学教授、博士生导师、黑龙江省解剖与组织胚胎学学科带头人、组织工程研究中心主任、中华医学会理事,太平洋医学杂志编委(俄罗斯)、Mededucation杂志编委(加拿大)、中国医学科学院杂志编委、俄罗斯远东地区医学科学院院士;曾任哈尔滨医科大学校长、党委书记,黑龙江省卫生厅厅长,黑龙江省医学科学院院长,中华医学会副会长,黑龙江省解剖学会副理事长,中国解剖学会理事,解剖学报编委。

早年在加拿大、美国留学,多年从事解剖学与组织胚胎学教学、科研工作,在 Parkinson 和 Alzheimer 病研究方面发表多篇论文和专著。承担关于干细胞及其应用等国家“十一五”攻关课题和省重点课题等研究。曾获黑龙江省政府科技进步一等奖,国家教学成果一等奖、二等奖。

前言 第2版

《人体断面解剖图谱》自 2005 年出版以来,因其内容丰富全面、实用性强、编排新颖、印刷精良,受到了各方同行的好评,是一本很有实用价值的图谱,得到了临床专家和广大读者的青睐,充分表明了该图谱在影像解剖学方面的代表性,但其仍存在不足和一些有争议的问题,亟待修改和明确。

《人体断面解剖图谱》第 2 版在人民卫生出版社的组织下,以第 1 版编写人员为主,又吸纳了有多年从事解剖学教学和科研工作经验的专家学者加入编写组,在第 1 版图谱的基础上进一步修订编写而成。编委会认真制订了再版计划,在修订和编写过程中,编者继承和发展了第 1 版图谱的精华,对每一个结构反复推敲、精益求精、力求完美,纠正和修改了不恰当之处,特别是明确了专业领域内有争议的问题,纠正了前后结构标示不统一之处。又聘请了知名解剖学专家王云祥教授进行了严格审核,使之更加规范和科学地展示在广大读者面前。

本图谱包括头颈部、胸部、腹部和盆部四部分。头颈部有水平断面、斜断面、冠状断面和矢状断面;胸部和腹部各有水平断面、冠状断面和矢状断面;盆部有男性、女性的水平断面和矢状断面,其冠状断面在腹部的冠状断面中一并编写。

本图谱图注采用中、英文双语标注,解剖学名词以全国自然科学委员会名词审定委员会公布的《人体解剖学名词》(科学出版社,1991)为准。

虽然各位编者在本图谱的编写过程中认真负责、竭尽全力地编写、审校,但由于水平所限,不妥之处在所难免,希望广大读者和同仁批评指正,使之日臻完善。

金连弘 张雅芳
2012 年 6 月
于哈尔滨医科大学

Preface of the second edition

Since the publication of *Human sectional anatomy atlas* in 2005, it had been praised by all sides of peer for its rich and comprehensive content, practical, innovative layout and excellent printing. It was a valuable atlas favored by clinical experts and readers. These fully demonstrated the representation of the atlas in the imaging anatomy, but it still had deficiencies and some controversial issues which need to be modified and clarified in urgent.

The second edition of *Human sectional anatomy atlas* was under the organization of the People's Health Publishing House, mainly written by the authors of the first edition, and also attracted the experts and scholars with many years of teaching and research experience engaged in the anatomy to join the writing group, further amended and wrote on the basis of the atlas of the first edition. The editorial committee had been carefully made the reprint plan. In the progress of amending and compiling, the editor inherited and developed the essences of the first edition atlas. They deliberated every structure repeatedly, strived for perfection and tried for the best, corrected and modified the impropriety, especially cleared the controversial issues in professional field and the structure which were marked inconsistently, and hired the famous anatomy professor Wang Yunxiang to audit strictly, making it more standard and scientific to show in front of the readers.

This atlas includes four parts, the head and neck, thorax, abdomen and pelvis. There are horizontal section, oblique section, coronal section and sagittal section of the head and neck; there are horizontal section, coronal section and sagittal section of the thorax and abdomen respectively; there are horizontal section and sagittal section of the pelvis of male and female, and the coronal section was edited in together with the coronal section of the abdomen.

The explanatory texts of the atlas were labeled by the two languages of Chinese and English. The anatomical terms took the "human anatomy term" (Science Press, 1991) released by the Terminology Committee of the National Natural Science Committee as standard.

Although the editors tried their best to write and revise in the preparation of this atlas, but due to the limited level, the mistakes would be inevitable. We are waiting for the criticism and correction of the vast readers and colleagues to make it perfectly.

Jin Lianhong Zhang Yafang
Jun. 2012
Harbin Medical University

前言

第1版

随着医学影像学的不断发展,各医学院相继为影像专业、七年制、研究生和五年制本科开设了断层解剖学。同时,临床各科医生普遍应用 CT、MRI 和 B 型超声作为重要的辅助诊断。我们编写这本图谱,旨在于为他们提供有价值的参考资料。

本图谱的特点是,既有原始的断面照片,又有在原断面的基础上,采用电脑绘图和图片,使结构更加清晰,便于学习掌握,节省时间,提高学习效果。

本书共有 510 幅断面解剖图,其中头颈部 162 幅,胸部 116 幅,腹部 126 幅,盆部 106 幅。

虽然我们尽最大努力,力求精益求精,但仍有不足之处,务请读者批评指正。

金连弘

2004. 12. 20. 于哈尔滨医科大学

Preface of the first edition

With the rapid development of medical imageology, more and more medical universities have set up course of human sectional anatomy for students majored in imageology, and for 7-year program, 5-year program medical students and postgraduates. At the same time, CT, MRT and B ultrasonic have been widely used by most doctors in assisting their daily diagnosis. So, we have compiled this book with the aim to provide valuable reference to all those people.

This book is featured by its plentiful pictures. Some of them are original photos taken from human body directly, and others are protracted pictures drawn with computer based on original photos, which will make the structure more clear to see and easier to grasp. And it will help the students to learn it more efficiently.

There are altogether 510 sectional pictures, among them, 162 pictures of head and neck, 116 pictures of thorax, 126 pictures of abdomen and 106 pictures of pelvis.

Although we have tried our best to pursue accuracy and perfection while compiling this book, for limit of our resources, we can't avoid making a slip. Therefore, we will mostly appreciate the valuable advice from our respected readers.

Jin Lianhong

Dec. 2004

Harbin Medical University

使用说明

本图谱分为头颈部、胸部、腹部和盆部四部分。每两页为一单元，一页为尸体断面图，一页为电脑彩绘图。头颈部有水平断面、斜断面、冠状断面和矢状断面；胸部和腹部各有水平断面、冠状断面和矢状断面；盆部有男性、女性的水平断面和矢状断面，其冠状断面在腹部的冠状断面中一并编写。

各参考平面如下：

头颈部水平断面的参考平面为眶下缘至外耳门的断面，斜断面的参考平面为眉上缘或眶上缘中点与外耳道的连线，冠状断面的参考平面为垂直于眼耳平面的断面，矢状断面的参考平面为正中矢状断面；胸腹盆部的水平断面的参考平面为胸骨角或脐的水平断面，矢状断面的参考平面为躯干的正中矢状断面，冠状断面的参考平面为腋中线的冠状断面。

英文名词缩写为

Fig. —figure v. —vein a. —artery
n. —nerve m. —muscle

Instructions

There are four regions in this atlas including head and neck, thorax, abdomen and pelvis. Each unit covers two pages. One page shows sectional picture of body, another is protracted colorful picture drawn with computer. The region of head and neck consists of horizontal, oblique, coronal and sagittal sections. The regions of thorax and abdomen consists of horizontal, coronal and sagittal sections. The region of pelvis consists of horizontal and sagittal sections of male and female. The coronal sections of pelvis will be seen in the chapter of coronal sections of abdomen.

The reference planes are as follows:

The reference plane for horizontal sections of head and neck is at eye-ear plane. The reference plane for oblique sections of head and neck is a line connecting mid-point of supraorbital margin with external acoustic pore. The reference plane for coronal sections of head and neck is the section perpendicular to the eye-ear plane. The reference for sagittal sections of head and neck is mid-sagittal section.

The reference plane for horizontal sections of thorax, abdomen, and pelvis is the horizontal section that passing through the sternal angle or umbilicus. The reference plane for sagittal sections of thorax, abdomen, and pelvis is the mid-sagittal section of trunk. The reference plane for coronal section of thorax, abdomen, and pelvis is the coronal section that passing through the midaxillary line.

Abbreviations:

Fig. —figure v. —vein a. —artery

n. —nerve m. —muscle



目录

Contents

头颈部 THE HEAD AND NECK

- ▶ 水平断面 Horizontal section 图 1 ~ 58 2
- ▶ 斜断面 Oblique section 图 59 ~ 104 60
- ▶ 冠状断面 Frontal section 图 105 ~ 134 106
- ▶ 矢状断面 Sagittal section 图 135 ~ 162 136

胸部 THE THORAX

- ▶ 水平断面 Horizontal section 图 163 ~ 204 166
- ▶ 冠状断面 Frontal section 图 205 ~ 230 208
- ▶ 矢状断面 Sagittal section 图 231 ~ 278 234

腹部 THE ABDOMEN

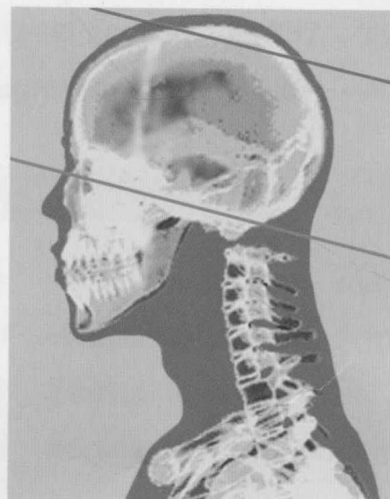
- ▶ 水平断面 Horizontal section 图 279 ~ 336 284
- ▶ 冠状断面 Frontal section 图 337 ~ 360 342
- ▶ 矢状断面 Sagittal section 图 361 ~ 404 366

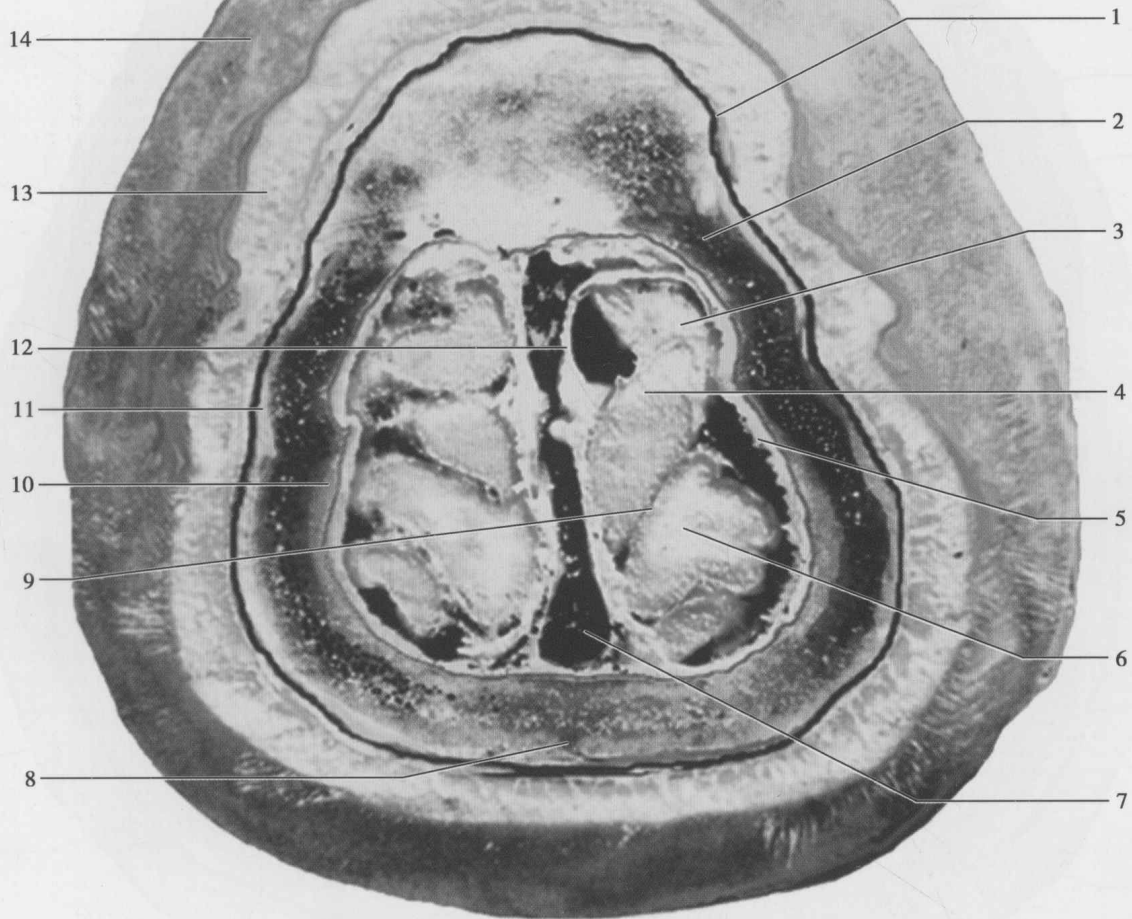
盆部 THE PELVIS

- ▶ 水平断面(男) Horizontal section, male 图 405 ~ 430 412
- ▶ 水平断面(女) Horizontal section, female 图 431 ~ 462 438
- ▶ 矢状断面(男) Sagittal section, male 图 463 ~ 494 470
- ▶ 矢状断面(女) Sagittal section, female 图 495 ~ 510 502



▲图1 头颈部水平断面



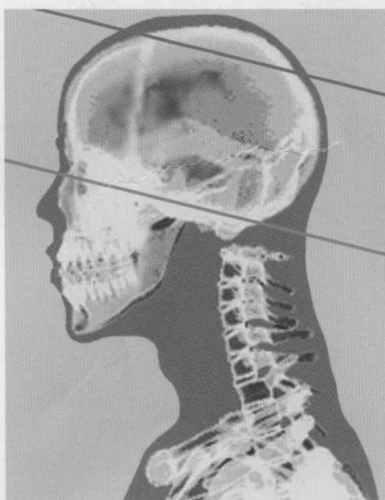


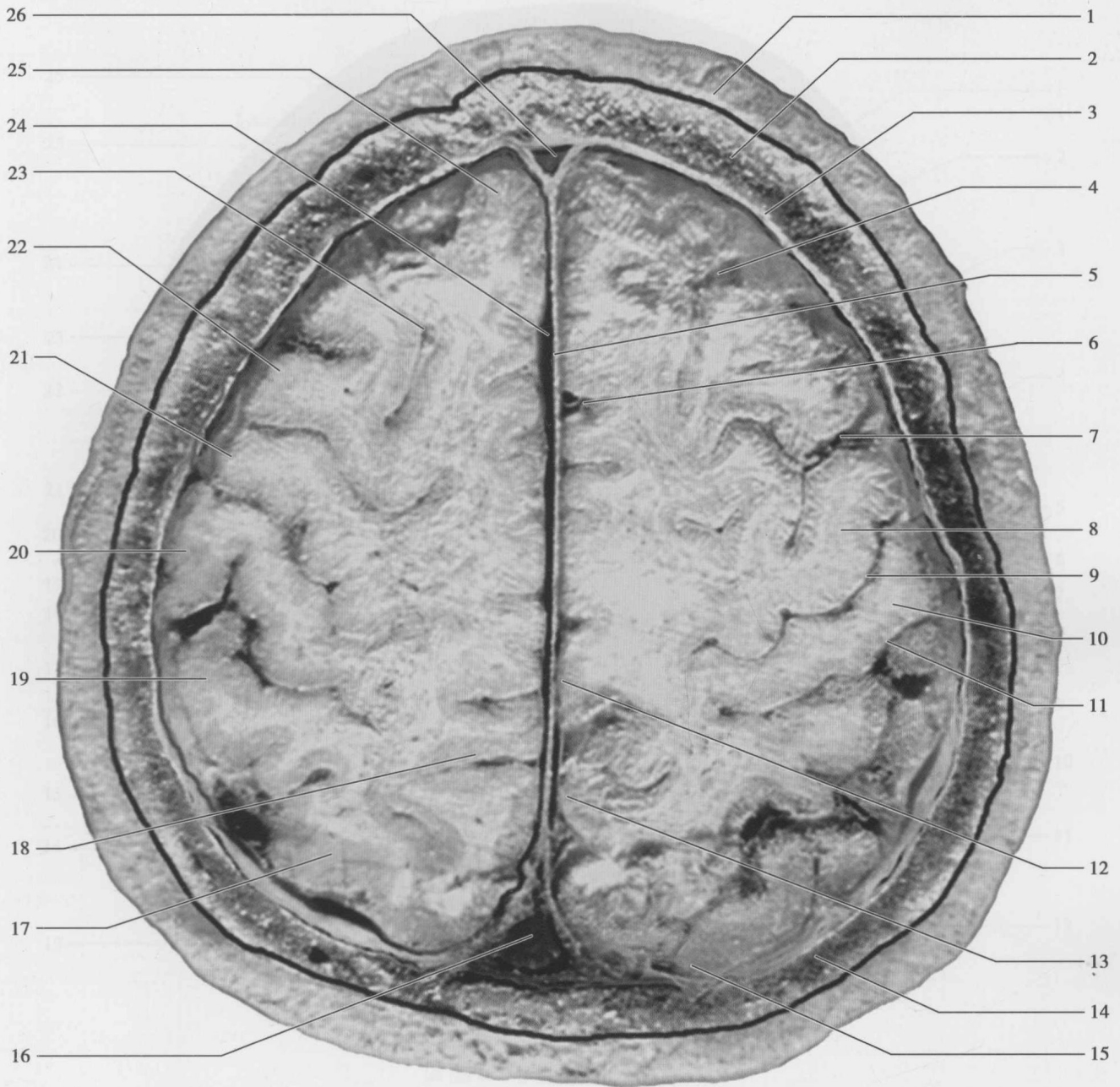
▲图2 头颈部水平断面

1. 颅盖外板 outer plate of calvaria
2. 颅盖板障 diploë of calvaria
3. 脑蛛网膜 cerebral arachnoid mater
4. 中央前回 precentral gyrus
5. 硬脑膜 cerebral dura mater
6. 中央后回 postcentral gyrus
7. 上矢状窦 superior sagittal sinus
8. 矢状缝 sagittal suture
9. 中央沟 central sulcus
10. 颅盖内板 inner plate of calvaria
11. 骨膜 periosteum
12. 大脑镰 cerebral falx
13. 浅筋膜 superficial fascia
14. 皮肤 skin



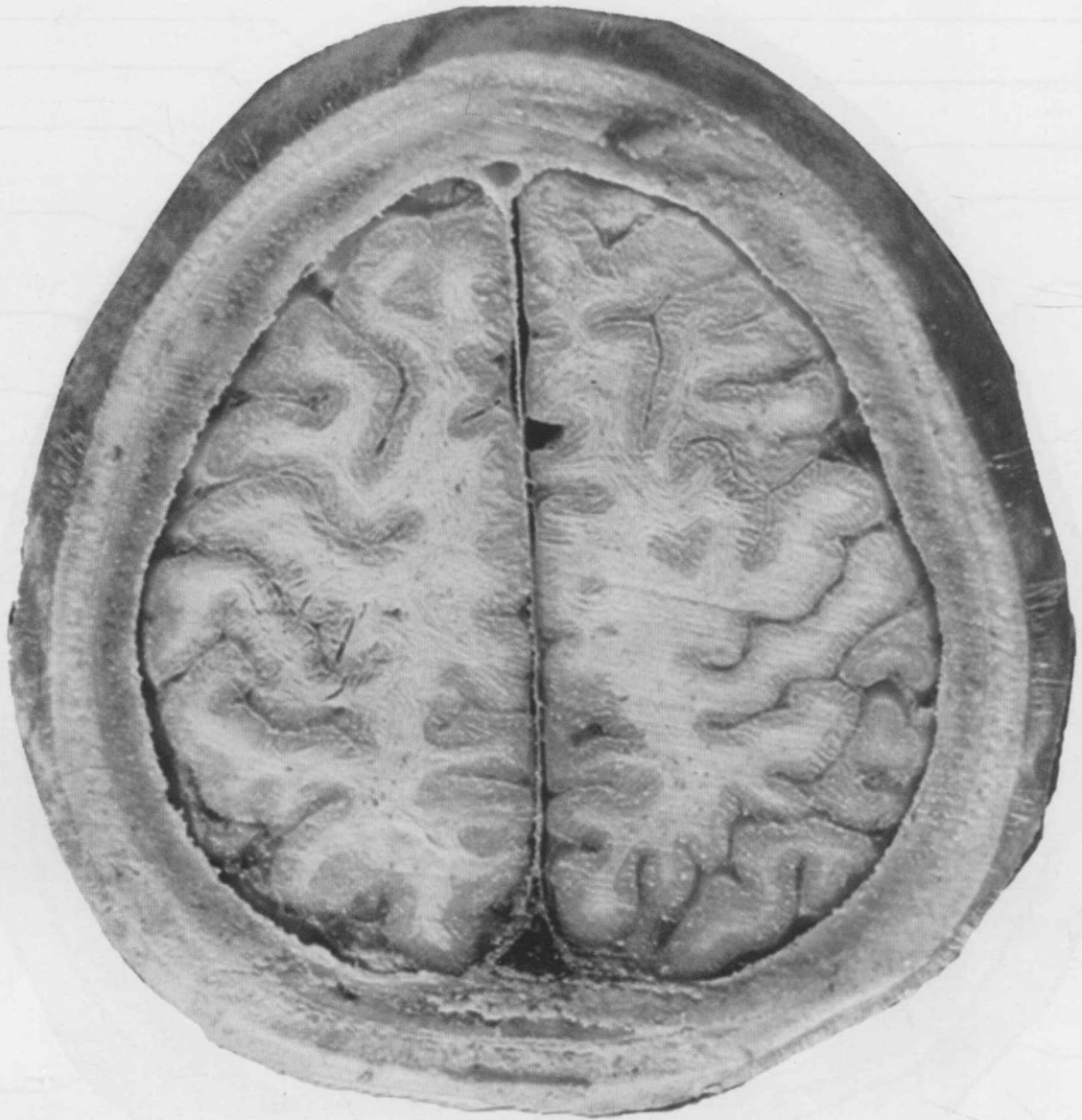
▲图3 头颈部水平断面



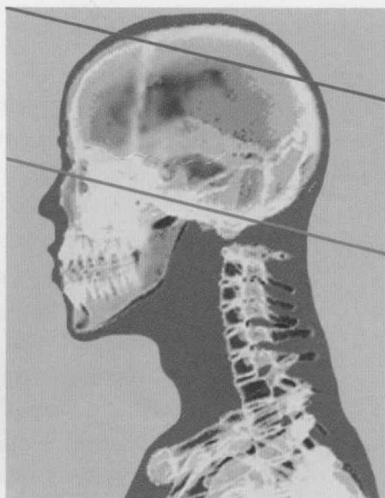


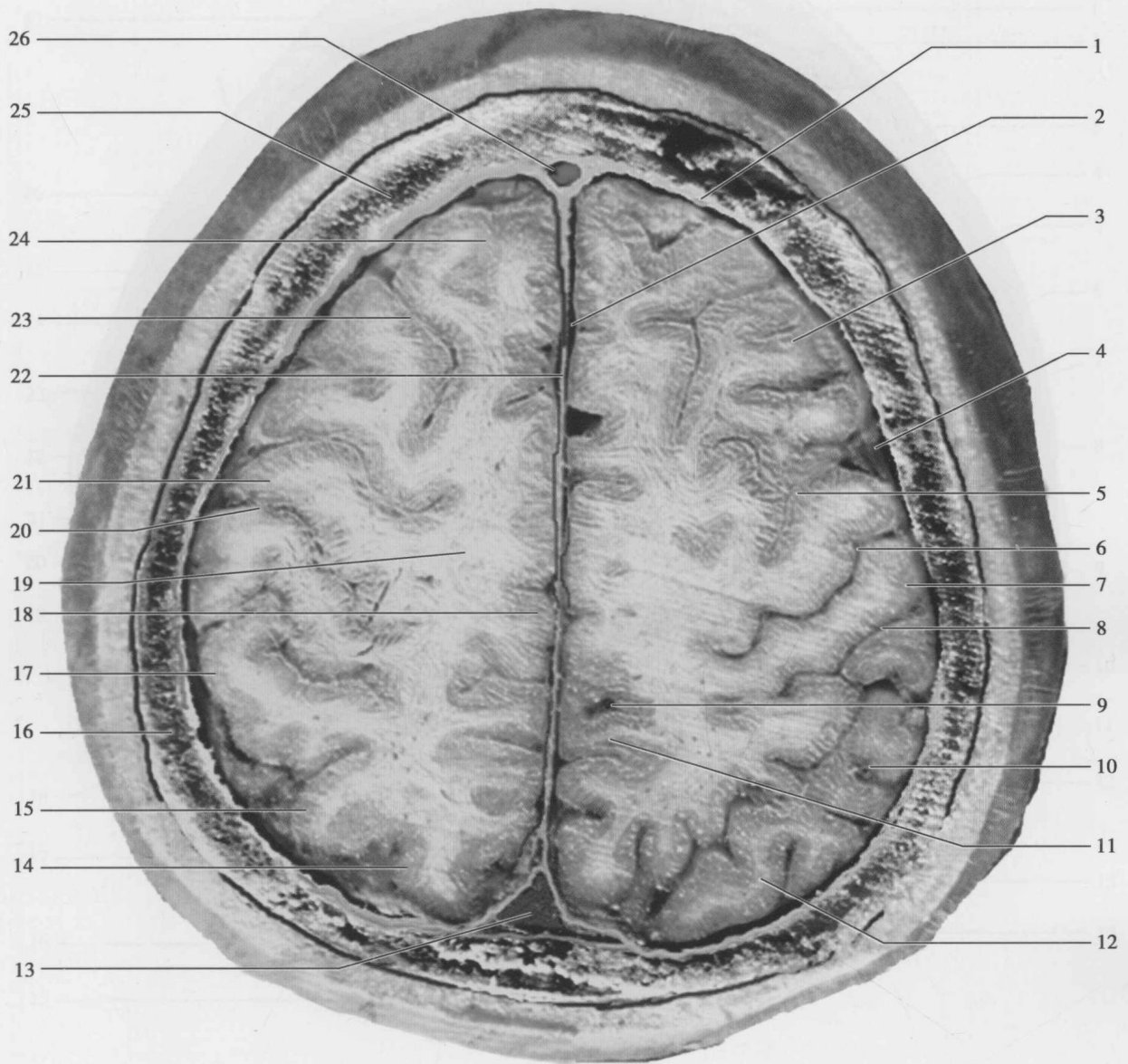
▲图4 头颈部水平断面

- | | |
|----------------------------------|--|
| 1. 帽状腱膜 galea aponeurotica | 14. 顶骨 parietal bone |
| 2. 额骨 frontal bone | 15. 顶上小叶 superior parietal lobule |
| 3. 硬脑膜 cerebral dura mater | 16. 上矢状窦后部 posterior part of superior sagittal sinus |
| 4. 脑蛛网膜 cerebral arachnoid mater | 17. 角回 angular gyrus |
| 5. 大脑镰 cerebral falx | 18. 扣带沟缘支 marginal ramus of cingulate sulcus |
| 6. 大脑前动脉 anterior cerebral a. | 19. 缘上回 supramarginal gyrus |
| 7. 中央前沟 precentral sulcus | 20. 中央后回 postcentral gyrus |
| 8. 中央前回 precentral gyrus | 21. 中央前回 precentral gyrus |
| 9. 中央沟 central sulcus | 22. 额中回 middle frontal gyrus |
| 10. 中央后回 postcentral gyrus | 23. 额上沟 superior frontal sulcus |
| 11. 中央后沟 postcentral sulcus | 24. 大脑纵裂池 cistern of cerebral longitudinal fissure |
| 12. 中央旁小叶 paracentral lobule | 25. 额上回 superior frontal gyrus |
| 13. 楔前叶 precuneus | 26. 上矢状窦前部 anterior part of superior sagittal sinus |



▲图5 头颈部水平断面





▲图6 头颈部水平断面

- | | |
|--|---|
| 1. 硬脑膜 cerebral dura mater | 14. 顶上小叶 superior parietal lobule |
| 2. 大脑纵裂池 cistern of cerebral longitudinal fissure | 15. 角回 angular gyrus |
| 3. 额中回 middle frontal gyrus | 16. 顶骨 parietal bone |
| 4. 脑蛛网膜 cerebral arachnoid mater | 17. 缘上回 supramarginal gyrus |
| 5. 中央前沟 precentral sulcus | 18. 中央旁小叶 paracentral lobule |
| 6. 中央沟 central sulcus | 19. 辐射冠 corona radiata |
| 7. 中央后回 postcentral gyrus | 20. 中央沟 central sulcus |
| 8. 中央后沟 postcentral sulcus | 21. 中央前回 precentral gyrus |
| 9. 扣带沟缘支 marginal ramus of cingulate sulcus | 22. 大脑镰 cerebral falx |
| 10. 缘上回 supramarginal gyrus | 23. 额上沟 superior frontal sulcus |
| 11. 楔前叶 precuneus | 24. 额上回 superior frontal gyrus |
| 12. 角回 angular gyrus | 25. 额骨 frontal bone |
| 13. 上矢状窦后部 posterior part of superior sagittal sinus | 26. 上矢状窦前部 anterior part of superior sagittal sinus |