

故宫博物院藏

中国古代窑址标本 河南（下）

THE SPECIMENS OF ANCIENT CHINESE KILNS IN THE
COLLECTION OF THE PALACE MUSEUM

HENAN VOLUME II

故宫博物院编 冯小琦 / 主编



COMPILED BY THE PALACE MUSEUM
CHIEF COMPILER: FENG XIAOQI

宫 出 版 社

FORBIDDEN CITY PUBLISHING HOUSE

R 876.32

阅 览

20143

故宫博物院藏

2

中国古代窑址标本 河南（下）

THE SPECIMENS OF ANCIENT CHINESE KILNS IN THE
COLLECTION OF THE PALACE MUSEUM

HENAN VOLUME II

故宫博物院编 冯小琦 / 主编



COMPILED BY THE PALACE MUSEUM
THE CHIEF COMPILER: FENG XIAOQI

故 宫 出 版 社
THE FORBIDDEN CITY PUBLISHING HOUSE

图书在版编目 (CIP) 数据

故宫博物院藏中国古代窑址标本. 河南 / 故宫博物院编.
— 北京 : 故宫出版社, 2013.5
ISBN 978-7-5134-0408-2

I. ①故… II. ①故… III. ①古代陶瓷—标本—中国—
图录 ②古代陶瓷—标本—河南省—图录 IV. ① K876.32
中国版本图书馆 CIP 数据核字 (2013) 第 082542 号

故宫博物院藏中国古代窑址标本 河南

编 者: 故宫博物院

出版发行: 故宫出版社

地址: 北京东城区景山前街4号 邮编: 100009

电话: 010-85007808 010-85007816 传真: 010-65129479

网址: www.culturefc.cn

邮箱: ggcb@culturefc.cn

制版印刷: 北京雅昌彩色印刷有限公司

开 本: 878×1092毫米 1/16

印 张: 46

版 次: 2013年5月第1版

2013年5月第1次印刷

印 数: 1~2300册

书 号: ISBN 978-7-5134-0408-2

定 价: 380.00元 (全二册)

宝丰窑

故宫博物院的部分专家学者曾于 20 世纪 70 年代、80 年代、90 年代和 2005 年调查了宝丰清凉寺窑址。

宝丰窑 1950 年发现，1977 年、1987 年再次作了复查。烧瓷时间为宋金元时期，烧瓷品种丰富，有印、刻花青瓷，还有白釉刻花及绿彩、三彩、黑釉、酱釉瓷。黑釉瓷多饰以纤细凸起线纹装饰，剔刻麦粒纹者比较别致。麦粒纹是宝丰窑宋金时期器物采用的装饰，其他瓷窑未见。从标本中可见到在黑釉瓶等器物上，刻出类似麦粒状花纹。宝丰窑受到耀州窑、磁州窑一定的影响。

Baofeng Kiln

Experts from the Palace Museum made investigations into Baofeng kiln at the location of the Qingliangsi Temple in 1970s, in 1980s, in 1990s and in 2005 respectively. The kiln was discovered in 1950 and revisited in 1977 and 1987. Porcelain varieties fired by the kiln include green glaze with stamped design and with incised design, white glaze with incised design and with green color design, wares with decoration in three colors, black and dark brown glaze. The black glaze wares were usually decorated with delicate lines in relief. Those black glaze wares with cut wheat grain design, for example, black glaze vase, are unique and solely produce of Baofeng kiln in Song-Jin dynasty. Similar wares are not found elsewhere so far. Baofeng kiln operated in Song, Jin and Yuan dynasties. Yaozhou and Cizhou kilns had a certain influence on Baofeng kiln.

345 宋 白釉划花瓶标本

Song dynasty

Specimen of white glaze vase with
incised design



346 宋

白釉划花水波纹瓶标本

Song dynasty

Specimens of white glaze vase with
incised wave design





347 宋 珍珠地划花瓶标本
Song dynasty
Specimen of vase with incised
design over pearl-pattern ground



348 宋 白釉绿彩壶标本
Song dynasty
Specimen of white glaze pot with
green color design

349 宋 白釉黑口碗标本

Song dynasty

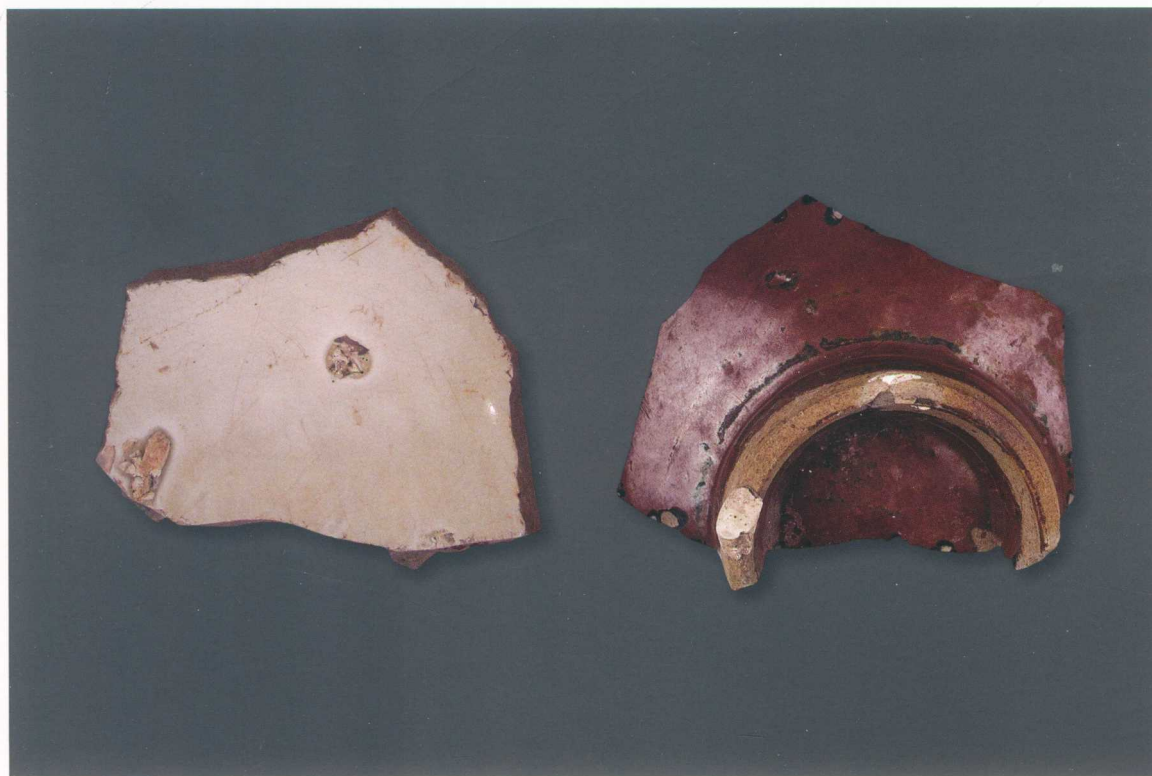
Specimen of white glaze bowl with
black rim



350 宋 里白釉外酱釉碗标本

Song dynasty

Specimen of bowl of white glaze
inside and dark brown glaze outside



351 宋 酱釉碗标本

Song dynasty

Specimen of dark brown glaze bowl



352 宋 青釉罐标本

Song dynasty

Specimen of green glaze jar

353 宋 青釉碗标本

Song dynasty

Specimens of green glaze bowl



354 宋 青釉盘标本

Song dynasty

Specimens of green glaze plate



355 宋 青釉印花菊瓣纹碗标本

Song dynasty

Specimens of green glaze bowl with stamped chrysanthemum design



356 宋 青釉印花缠枝菊花纹碗标本

Song dynasty

Specimens of green glaze bowl with stamped interlocking chrysanthemum design



357 宋 青釉里印花缠枝菊花纹外刻直线纹碗标本

Song dynasty

Specimen of green glaze bowl with stamped interlocking chrysanthemum design inside and incised line design outside



358 宋 青釉弦纹双系罐标本

Song dynasty

Specimen of green glaze jar with strings design and two handles



359 宋 青釉刻花花卉纹瓶标本

Song dynasty

Specimen of green glaze vase with incised floral design



360 宋 青釉刻花花卉纹碗标本

Song dynasty

Specimen of green glaze bowl with
incised floral design



361 宋 青釉刻花花卉纹碗标本

Song dynasty

Specimen of green glaze bowl with
incised floral design



362 宋 青釉刻线纹碗标本

Song dynasty

Specimen of green glaze bowl with
incised line design



363 宋 青釉刻花花卉纹盘标本

Song dynasty

Specimen of green glaze plate with
incised floral design



364 宋 青釉划花花碗标本

Song dynasty

Specimen of green glaze bowl with
incised design



365 宋 青釉划花花卉纹碗标本

Song dynasty

Specimen of green glaze bowl with
incised floral design



366 宋 黑釉碗标本

Song dynasty

Specimens of black glaze bowl



367 宋 油滴釉碗标本

Song dynasty

Specimens of silvery spots bowl

