

NEW SHOW FLAT DESIGNED BY POPULAR DESIGNERS IN HONGKONG & TAIWAN

港台当红设计师最新样板房

深圳市创扬文化传播有限公司 编



福建科学技术出版社

FUJIAN SCIENCE AND TECHNOLOGY PUBLISHING HOUSE

图书在版编目(CIP)数据

港台当红设计师最新样板房: 汉英对照/深圳市创扬
文化传播有限公司编. —福州: 福建科学技术出版社,
2009. 7

ISBN 978-7-5335-3426-4

I. 港… II. 深… III. ①住宅-室内设计-香港-图集
②住宅-室内设计-台湾省-图集 IV. TU241-64

中国版本图书馆CIP数据核字(2009)第100691号

书 名 港台当红设计师最新样板房
编 者 深圳市创扬文化传播有限公司
出版发行 福建科学技术出版社(福州市东水路76号, 邮编350001)
网 址 www.fjstp.com
经 销 各地新华书店
印 刷 恒美印务(广州)有限公司
开 本 635毫米×965毫米 1/8
印 张 40
图 文 320码
版 次 2009年7月第1版
印 次 2009年7月第1次印刷
书 号 ISBN 978-7-5335-3426-4
定 价 268.00 元

书中如有印装质量问题, 可直接向本社调换

NEW 港台当红设计师最新样板房 SHOW FLAT DESIGNED BY POPULAR DESIGNERS IN HONGKONG & TAIWAN

深圳市创扬文化传播有限公司 编

福建科学技术出版社
FUJIAN SCIENCE & TECHNOLOGY PUBLISHING HOUSE

PREFACE

前言

样板房是楼市发展的一个产物，也是住宅文化的一种表现。一个好的样板房，在很大程度上能让人们品味到居住文化的内涵，能激起购房客户的购买欲望，使开发商在项目销售上占据先机，从而赢得好的经济和社会效益。样板房设计就是户型结构的美化和再创造，强化自己的优点，弱化或改掉其中的缺点，以便将其完美地展现给客户面前。在追求空间的展示效果的同时，样板房设计也应考虑楼盘本身的风格和文化品位，以及居家的实用性。因而，设计师们设计样板房时必须注重空间的规划，极度发挥空间的功能作用；把真实与想像空间合二为一，以光影表达设计意念；以新材料、新技术强化设计构思，充分挖掘楼盘本身的文化内涵。

香港、台湾的室内设计有自己显著的“烙印”，比如国际化的视野，比如将小空间玩得得心应手……香港、台湾设计师接触潮流前沿资讯多，设计更有新意；善于第一时间把新材料、新工艺运用到工程中去；着力于文化修养和鉴赏品味的提升。因而，他们的作品具有前沿性，尤其是那些当红设计师的作品。

本书选择的48案例，正是香港、台湾当红设计师中展示性与实用性完美结合的样板房设计作品。这些作品户型多样，且有着明显的主题思路和风格。其中，既有别墅、复式等大户型，也有单身公寓等小户型。而多元化的设计风格跨越英式、意式、美式、中式和泰式，设计手法更包括时尚、简约、禅味、浪漫等多种潮流。通过这批作品，希望能给读者带来不同地域、不同风格的设计体验。

编者

2009年6月

Show flat is a production developing from the real estate, and it is also an expression of the housing culture. To a great extent, one good show flat let people taste the connotation of housing culture, activate the consumers' purchasing desires, and help the developers take the preemptive opportunities in the project sales to gain more benefits.

The show flat design is the beautification and recreation of the constructions. It emphasizes its advantage, attenuates or gives up its disadvantage, to show itself to the consumers with a perfect face. On pursuing the bandwagon effect of the space, the style and cultural taste of the building itself, and the practicability of the house are also taken into consideration while designing a show flat. Therefore, the designers must pay more attention to the design's layout, for exerting the functions of the space, combine the reality with the imagination, express the design ideal by using lights and shadow, and enhance the design by using new materials and method, in order to fully exerting the cultural connotation of the building itself.

Interior designs in Hong Kong and Taiwan have their own prominent marks, such as internationalized vision, dealing with small space at will. The designers in Hong Kong and Taiwan have more chances to get in touch with advancing information which in turn makes their designs more original. They are good at using new materials and new technologies into the projects, focusing on the promotion of cultural awareness and appreciation. Therefore, their works are with frontier nature, especially those from the famous designers.

The book includes 48 cases, which are successful works from famous designers from Hong Kong and Taiwan, representing perfect combination about exhibiting and practicability. The cases include all kinds of types, and each of which shows obviously its own theme and style. The types cover from big size such as villa and duplex-type to small size such as single apartment. The diversified design styles cover from English, Italian, American, Chinese and Thai-style. And the design methods include many kinds of the trends, stylish, simple, Zen, and romantic. We hope that this book can show the readers some design experience of different styles which comes from the different districts.

CONTENTS

目录

- | | | | | | |
|-----|----|---------------|-----|----|-----------|
| 006 | 01 | A Villa in La | 090 | 13 | 北京星河湾 |
| 012 | 02 | 盈超·威廉城邦01-04 | 098 | 14 | 仁爱 |
| 018 | 03 | 盈超·威廉城邦02-02 | 104 | 15 | 天母纵横 |
| 024 | 04 | 柏苑 | 108 | 16 | 韵 |
| 032 | 05 | 贺龙居 | 114 | 17 | 远雄翡冷翠 |
| 038 | 06 | 碧云苑 | 124 | 18 | 远雄大学耶鲁(一) |
| 044 | 07 | 蓝湾半岛 | 130 | 19 | 远雄大学耶鲁(二) |
| 052 | 08 | 深水湾 | 138 | 20 | 绿意生活 |
| 060 | 09 | 金地长青湾H1 | 142 | 21 | 板桥刘宅 |
| 068 | 10 | 金地长青湾T6 | 150 | 22 | 宜兰张宅 |
| 074 | 11 | 镜花水月 | 158 | 23 | 仁爱帝宝 |
| 080 | 12 | 北京瑞士公寓 | 164 | 24 | 清新之家 |

168 \ 25 八八大宅

174 \ 26 白色巨塔

182 \ 27 时尚豪景

188 \ 28 南港吴公馆

192 \ 29 乐业街林公馆

198 \ 30 桃园

204 \ 31 科博臻观黄公馆

208 \ 32 中央公园张公馆

216 \ 33 新竹杨公馆

224 \ 34 新竹张公馆

232 \ 35 朱公馆

238 \ 36 线条结构空间长卷

244 \ 37 转折深邃的黑色美学

252 \ 38 双溪山居

260 \ 39 普罗旺斯

266 \ 40 低调奢华

272 \ 41 时尚嬉趣

280 \ 42 夹层住宅

284 \ 43 屏东张宅

294 \ 44 新店梁公馆

300 \ 45 崇德仁美

304 \ 46 宜兰别墅

310 \ 47 林口住宅

314 \ 48 竹北住宅



01

A Villa in La

设 计 师：蔡明治 (Alex Choi)

设计公司：蔡明治设计有限公司 (Alexchoi Design & Partners Ltd.)

公司地址：香港荔枝角长顺街5号长江工厂大厦2楼A1室

公司网址：<http://www.alexchoi.com.hk>

公司电话：00852-28935907

项目地点：美国

建筑面积：743平方米

主要材料：大理石、花岗岩、木质天花、白色水泥漆等





为表达出现代主义的思想，设计师采用石头地板、木质天花板以及白灰泥来体现不同的空间层次，藉以夸大空间的整洁度和光滑度。盘旋而上的楼梯与整个几何格局形成鲜明的对比，成为整个空间的视觉焦点。它将三楼连接了起来，通过天窗，直上云霄，也因此有了象征“飞翔”的垂直光线。为保证空间的连贯性，以及拥有安静的生活环境，卧室的设计理念基本一样。

另外，设计师在此案还加入了一些中式思想，用“景中有景”来打造空间的层次感和深度感。例如，将螺旋楼梯设在中间是为了掩盖玄关的角落。反之，角落里的家具摆设则把花园里的美景揽进屋内。



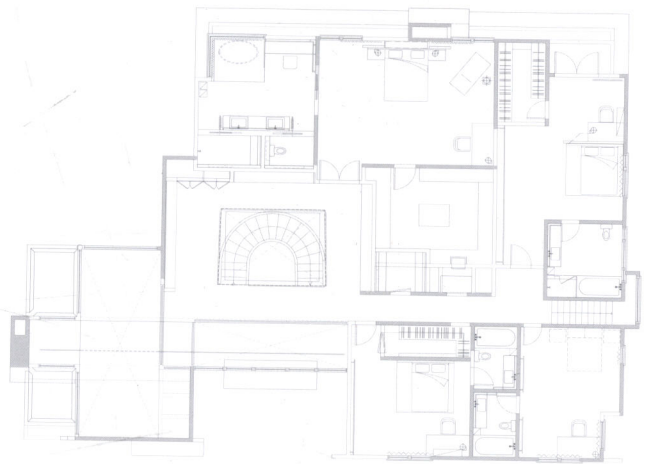
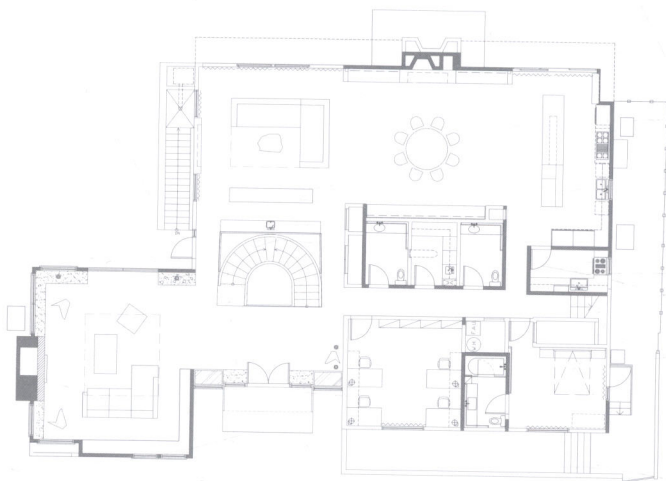
In order to express the "modernism" spirit. The designer simply used stone floor, timber clad ceiling and white stucco paint to express different planes of the space. It helps to exaggerate the cleanness and sleekness of the space. I put an "organic" spiral staircase to play a great contrast with the geometric layout which became a centre piece of the whole house as well. This links up the 3 storeys and even to the sky through the skylight. So a symbolic "flying" pendant light is being put. The bedrooms are quite similar to each other since my client likes to have consistent and calm living environment.

In addition, The designer have put some Chinese thinking in the project as well. That is "scene behind scene" which create layers and depth of the space. For example, the spiral stair is intentionally put at the middle which screens the family corner from the entry hall. And the furniture arrangement in the family corner screens the landscape garden out there in turn.













02

盈超·威廉城邦01-04

设计师：冯景生(Sonny Fung)

设计公司：Sfp Interior Design Co.

公司地址：12, 1/F Hutton Square, No.28 Bute Street, Mong Kok, KLN.

公司网址：<http://www.sfp-design.com.hk>

项目地点：惠州市

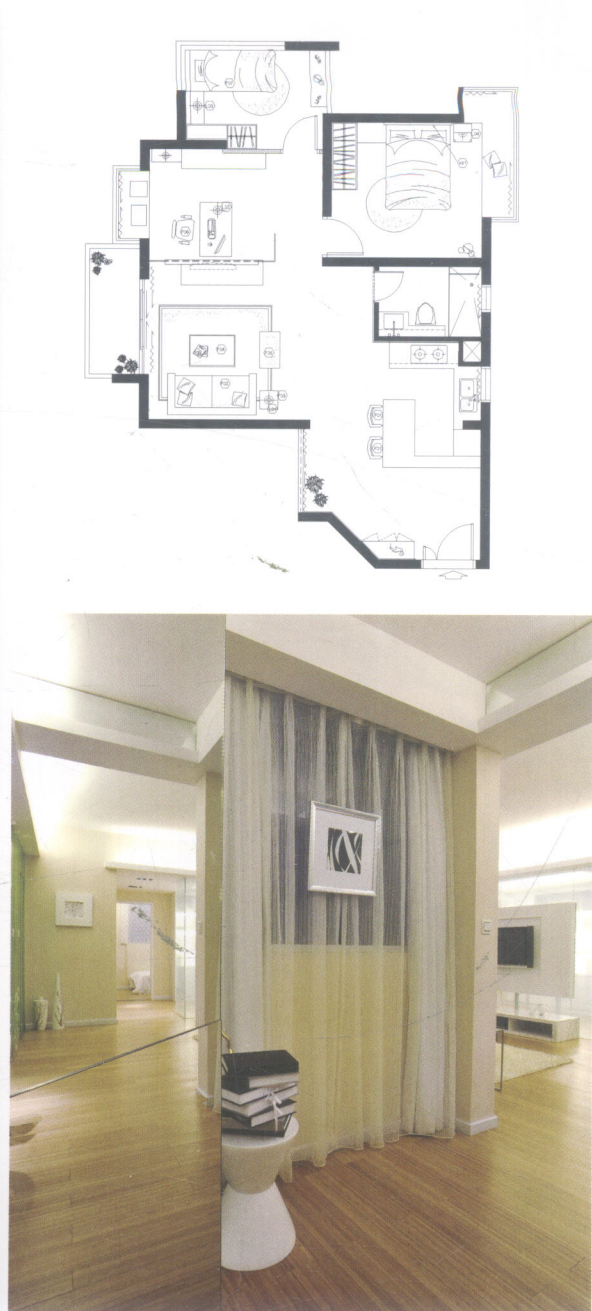
建筑面积：65.1平方米

主要材料：云石、实木地板、清镜、玻璃、地毯、手扫白漆家具等









设计师在接受此套小户型的居室设计案例的时候，选择了简约的设计手法作为处理此处空间的一种方式。首先，对客厅空间的设计并没有采用大开大合的繁杂手法，取而代之的是让人感觉舒服、大方、简洁、整齐的简易处理方式。在地面的选材上，考虑到实木地板有很好的弹性、不易滑溜，且触感很好，加上它的纹理往往会给人一种回归自然、返璞归真的感觉，不仅环保而且调适性好，能在质感与美感上独树一帜地完美表达出设计师需要表现的这样一个简约清新的家的感觉而大面积的使用之。在墙面上则选择与地面实木地板同一系列的色彩——米黄色，没有过多的装饰却依旧显得柔和清淡、清爽简单，延续了空间里的设计风格；同时为了扩张空间向度，局部墙面选择镜面装饰，利用镜面的物理性质来延伸视线，让小户型空间也有大文章。在家具的处理上，设计师选择了焗油手扫白漆的处理方式，利用白色百搭的包容性为简约的风格做出了一种最佳的诠释。其次，在卧室空间的处理上依旧延续客厅的设计风格，强调生活的舒适性与实用性，没有大手笔大制作，但是却于细微处着眼，处处体现设计师的人文关怀。

Therefore, the designer chooses a simple design method for this small apartment without hesitation the moment he takes over this case. First of all, instead of having a complicated design for the living room, the designer uses a simple, well-aligned method for it which makes you feel perfectly comfortable. In terms of choosing material for the floor, wood is adopted considering its high flexibility, anti-skid feature and the feeling it brings while walking on it, no matter it is the temperature, the touch or the feeling of smoothness. What's more, the texture of wooden floor makes you feel like going back to nature, environment friendly and adjustable. It interprets perfectly and uniquely what the designer wants to express—a feeling of a simple, clear home in terms of texture and aesthetics. As for the wall, the same color series—beige is chosen to go with the wooden floor, gentle, clear, fresh and simple, without unnecessary decorations, which reserve the style of the space design. Meanwhile, in order to enlarge the space, part of the wall is decorated with mirror, which brings more possibilities for a small apartment. As for furniture, the designer chooses a treatment with oil and brushing lacquer, presenting the best piece of a white, simple style which matches with everything else. Second of all, the decoration of the bedroom continues the style of the living room, emphasizing the comfort and practicability of living. There are no macro designs but you can see all the humanistic care in every detail.