

王光璐◎著

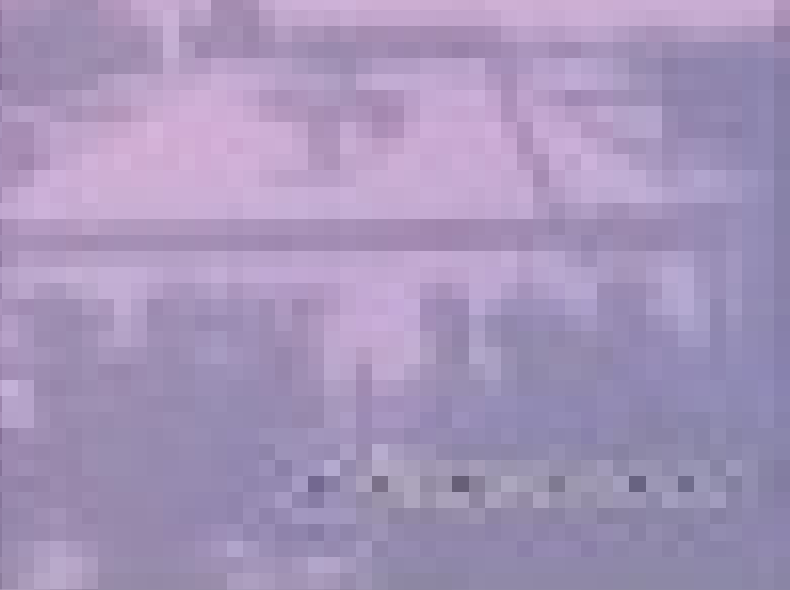
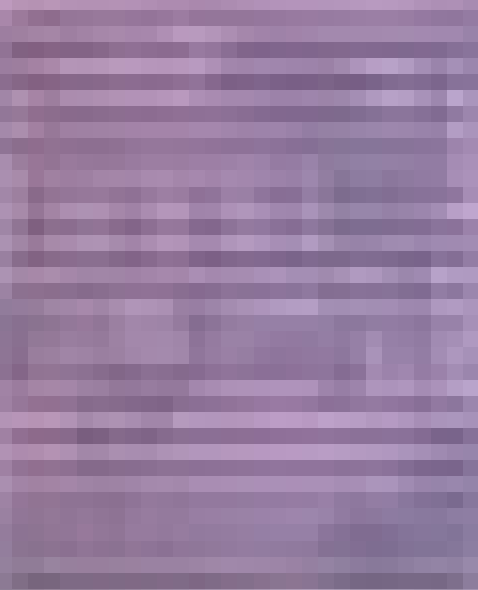
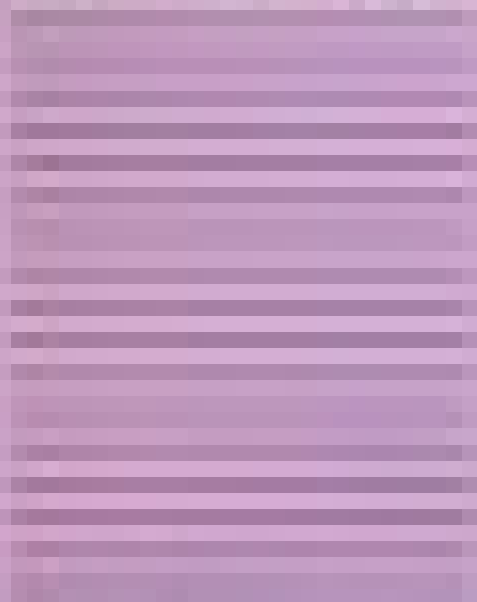
Wanguanglu Jiaoshou Lunwenji

王光璐教授 论文集

 北京科学技术出版社


王光恩教授

论文集



王光璐教授论文集

王光璐◎著

 北京科学技术出版社

图书在版编目 (CIP) 数据

王光璐教授论文集/王光璐著. —北京: 北京科学技术出版社, 2009.10

ISBN 978-7-5304-4266-1

I.王… II.王… III.眼科学—文集 IV.R77.53

中国版本图书馆CIP数据核字 (2009) 第165405号

王光璐教授论文集

作者: 王光璐

责任编辑: 杨帆 杨毅

责任校对: 黄立辉

责任印制: 杨亮

封面设计: 樊润琴

出版人: 张敬德

出版发行: 北京科学技术出版社

社址: 北京西直门南大街16号

邮政编码: 100035

电话传真: 0086-10-66161951(总编室)

0086-10-66113227 0086-10-66161952(发行部)

电子信箱: bjkjpress@163.com

网址: www.bkjpress.com

经销: 新华书店

印刷: 三河国新印装有限公司

开本: 889mm×1194mm 1/16

印张: 21.25

插页: 8

字数: 480千

版次: 2009年10月第1版

印次: 2009年10月第1次印刷

ISBN 978-7-5304-4266-1/R·1177

定价: 100.00元



京科版图书, 版权所有, 侵权必究。
京科版图书, 印装差错, 负责退换。

编者名单

策 划：张 风 焦树玲
主 编：张 风 曹绪胜
编辑人员：马 凯 纪海霞 李志华 杨庆松
 周海英 高丽琴 曹绪胜 焦 璇
 洪 洁 毛 羽

编者的话

王光璐教授是我们的恩师，今年八十华诞。回首与先生相识、相交、相知的岁月，获益匪浅，感慨万端。我们受先生教诲始于上世纪80年代初，那时正值国家改革开放时期，重视科学教育，科技的发展推动了医学的进步，新的医疗设备引入我国。当时眼科引进了荧光血管造影机和激光机，受科室委托，先生组建了荧光血管造影组，从此我们与先生结下了不解之缘。这个组从先生带领一名技术员自制荧光素钠、寻找药物鉴定合作者开始，直至建立科学的眼底血管造影、眼底激光操作规程，吸引了众多年轻人自愿加入，艰辛创业，培育了一代又一代新人，开展了一项又一项新的业务，为我院眼底病的诊治水平走在全国前列做出了突出贡献，为眼科中心成立后建立完整的眼底专科在技术和人才上奠定了坚实基础。

在整理先生论文的过程中，每当重读那些文题，就想起在先生指导下看门诊、做手术、阅读片子、探讨问题的难忘情景，一幕幕往事犹在眼前；品味一篇篇医文就像品尝陈年老酒，沁人心脾，心旷神怡，不仅有味，而且有情。先生虽是耄耋之年，仍出诊服务，治病救人；仍发表文章，著书立说，勤勉敬业，可敬可贺。时至今日，先生从医已有53年，每每与先生并肩走在一起谈起眼科、论起眼底、忆起心中的那个“mini”小组，感受到的仍是先生那活跃前卫的思维，体验到的仍是先生对患者投向的关注目光。

“医生应该是临床学家”，这是先生告诉我们的从医真谛，一直深深地感染和影响着我们，可惜我们距先生的要求相差甚远。编撰本《论文集》，不仅想为先生做一点儿事以表寸心，也是感激先生在从医生涯中对我们的教诲和提携，更是时刻提醒我们以先生为镜，勤勉谦和，泽心仁术，博爱育人，探求不止。

祝我们的恩师健康！快乐！

张 风 焦树玲

2009.7

目 录

Retinal Detachment Associated with Coloboma of the Choroid	(1)
Retinal Detachment Due to Firecracker Injury	(11)
中心性血管痉挛性视网膜病变	(15)
脉络膜渗漏 20 例初步报告	(17)
儿童视网膜脱离 50 例临床分析	(22)
先天性视乳头小凹合并黄斑部浆液性脱离	(27)
三窝内皮样囊肿一例报告	(28)
爆竹伤致视网膜脱离七例	(30)
气体在视网膜脱离手术中的应用	(31)
玻璃体切除术治疗非糖尿病性玻璃体出血	(35)
视神经周巩膜外加压术后失明三例	(39)
复杂视网膜脱离的联合手术治疗	(40)
玻璃体猪囊尾蚴病的手术治疗	(43)
双侧进行性闭塞性视网膜血管炎	(46)
家族性渗出性玻璃体视网膜病变的临床观察	(49)
青少年儿童型 Coats 病的临床观察	(54)
大剂量庆大霉素误入眼球内致视网膜中毒性改变三例	(58)
48 例视网膜血管瘤的临床特征	(60)
双侧视网膜动脉炎伴多发性瘤样动脉扩张一例	(64)
病理性近视的相干光断层扫描	(66)
视网膜神经上皮脱离合并劈裂六例	(71)
原发性视网膜色素变性合并血管闭塞的临床特点分析	(74)
非缺血型视网膜中央静脉阻塞的长期随访研究	(78)
脉络膜转移癌的临床特点分析	(84)
脉络膜血管瘤	(89)
视网膜及色素上皮错构瘤一例报告	(92)
脉络膜缺血 (附 2 例报告)	(94)
无脉症的眼部表现 6 例报告	(97)
超声多普勒检查在眼科应用的初步报告	(100)
白内障针拨术后视网膜脱离二例报告	(104)
玻璃体切除术后视网膜脱离	(105)
玻璃体视网膜联合手术取眼内猪囊尾蚴	(108)

特发性葡萄膜渗漏综合征的眼底荧光血管造影	(110)
糖尿病视网膜病变并发症的手术治疗	(113)
二极管激光治疗糖尿病视网膜病变的临床观察	(116)
晶体不全脱位睫状上皮撕裂致视网膜脱离一例	(119)
多发性一过性白点综合征的临床观察	(120)
复杂性视网膜脱离手术后的激光光凝治疗	(123)
视网膜血管瘤及其并发症的眼内手术治疗	(125)
眼内硅油取出术前激光光凝对防止视网膜脱离复发的效果观察	(127)
脉络膜骨瘤的激光治疗	(130)
低分子量肝素——速避凝预防玻璃体切除术后眼内纤维蛋白渗出	(133)
急性后极部多灶性鳞状色素上皮病变的吲哚青绿血管造影	(137)
眼底营养不良性疾病的吲哚青绿血管造影	(141)
光学相干断层照相及其在眼科的应用	(145)
视网膜中央静脉阻塞黄斑损害的光学相干断层扫描图像观察	(152)
Stargardt 病的光学相干断层扫描图像特征	(156)
多发性后极部色素上皮病变的吲哚青绿和荧光素眼底血管造影	(158)
伏格特—小柳—原田综合征的吲哚青绿眼底血管造影观察	(161)
脉络膜黑色素瘤的吲哚青绿和荧光素眼底血管造影	(165)
糖尿病视网膜病变患者黄斑病变的光学相干断层扫描	(168)
视网膜血管瘤的临床疗效观察	(172)
脉络膜转移癌的眼底血管造影	(176)
经瞳孔温热疗法治疗渗出型老年性黄斑变性的临床疗效观察	(180)
经瞳孔温热疗法治疗孤立性脉络膜血管瘤	(184)
经瞳孔温热疗法治疗眼内肿瘤疗效观察	(188)
息肉状脉络膜血管病变	(193)
近视盘视网膜毛细血管瘤的临床特征分析	(197)
过敏性紫癜合并眼底病变二例	(201)
脉络膜黑色素瘤敷贴放射治疗的初步观察	(203)
脉络膜渗漏综合征的眼底血管造影特征	(208)
玻璃体切除术治疗 Terson 综合征二例	(212)
莱姆病的眼底表现及其治疗	(213)
双眼 Coats 临床观察	(217)
胰岛素依赖型糖尿病性视网膜病变的临床观察	(219)
彩色多普勒超声成像辅助诊断常见眼底病初步总结	(222)
急性视网膜坏死综合征的荧光素眼底血管造影分析	(227)
低分子量肝素防治兔增生性玻璃体视网膜病变的实验研究	(230)
糖尿病视网膜病变的分级标准初探	(235)
FFA 和 OCT 结合对老年性黄斑变性脉络膜新生血管分型的评估	(239)
轻型播散性光凝治疗非增殖性糖尿病视网膜病变的回顾性研究	(244)

脉络膜缺血性疾患观察	(250)
先天性脉络膜缺损合并视网膜脱离	(254)
膨胀气体在后极部异物摘出的应用	(257)
C ₃ F ₈ 在黄斑裂孔合并视网膜脱离手术的应用	(258)
视网膜脱离并发白内障的三联手术治疗	(261)
视网膜后膜	(263)
准分子激光角膜切削术后视网膜脱离	(266)
孤立性脉络膜血管瘤的临床疗效观察	(268)
视网膜色素变性的相干光断层成像	(271)
糖尿病视网膜病变与糖代谢氧化还原的关系	(275)
中心性浆液性脉络膜视网膜病变的光学相干断层照相	(279)
正常眼黄斑区视网膜神经上皮层厚度的活体测量	(282)
光学相干断层成像的特色和不足	(287)
IRVAN 综合征的临床特征和治疗	(290)
脉络膜黑色素瘤 TTT 治疗后细胞凋亡的初步研究	(295)
脉络膜血管瘤的激光治疗	(297)
糖尿病性眼底病及激光光凝治疗	(299)
屈光性激光角膜切削术简介	(302)
氩激光光凝对视网膜分支静脉阻塞预后的影响	(303)
家族性渗出性玻璃体视网膜病变一家系	(307)
宽巩膜扣带治疗巨大破孔的视网膜脱离	(308)
老年黄斑变性的激光治疗	(310)
眼内非特异性肉芽肿性炎症致眼球摘除 1 例	(315)
眼内异物继发视网膜脱离临床分析	(316)
老年糖尿病与眼病	(320)
吲哚青绿血管造影 (ICGA) 在眼底病诊断中的应用	(323)
光学相干断层成像在眼底病诊疗中的应用	(325)
氩激光治疗眼底病初步报告	(327)
全视网膜光凝治疗糖尿病性视网膜病变	(331)

Retinal Detachment Associated with Coloboma of the Choroid

Koanglu Wang, MD (BY INVITATION) AND George F. Hilton, MD

From the department of Ophthalmology,

University of California, San Francisco, California.

TR. ANL. OPHmT1. Soc. vol. LXXXIII, 1985, 49—62

【Abstract】 A coloboma of the choroid is characterized by the congenital absence of a portion of the retinal pigment epithelium and choroid. It is recognized clinically as a prominent white zone of the fundus which is usually located inferiorly and slightly to the nasal side. There is a very thin layer of rudimentary retina with a few blood vessels overlying the sclera, which may be ectatic. This anomaly is due to a defect in the normal fusion of the fetal fissure of the optic cup. Normally, the two layers of the optic cup close at the fissure near the equatorial zone and the fusion process then extends anteriorly to the pupil and posteriorly to the optic nerve.

Choroidal coloboma is an infrequent finding and was found in only 0.14% of a large series of eye patients.^[1] It may occur as an isolated finding, but is frequently associated with other anomalies, such as iris coloboma, microphthalmus, microcornea, cataract, lens coloboma, and optic pit. It may also be associated with various systemic birth defects.^[2,3] It is often found in several congenital syndromes, such as the syndromes of Goldenhar,^[4] Schmid-Fraccaro,^[5] Joubert,^[6] Mohr-Clausen,^[7] and Aicardi.^[8,9] Some of these patients have been found to have defects in one or more chromosomes.^[10~12]

Our review of the literature has disclosed 43 eyes with choroidal coloboma associated with detachment of the retina (Table I).^[13~23] The largest previous series was ten eyes.^[16] Our present paper reports 26 additional eyes.

METHODS AND MATERIALS

All patients were referred to the Tong Ren Hospital, Peking (Beijing), China, for retinal detachment surgery. The preoperative evaluation included visual acuity, motility, refraction, pupils, tension, biomicroscopy, and binocular indirect ophthalmoscopy.

Preoperative findings are summarized in Table II. The absolute incidence of bilaterality could not be determined, because the retina of the fellow eye in eight patients could not be visualized due to cataract or phthisis. All 26 eyes also had coloboma of the iris and the majority also had cataract, nystagmus, microphthalmus, or microcornea (Table III). Some patients also exhibited strabismus and optic nerve coloboma. Most detachments were relatively old and all four quadrants were involved in 81% of cases (Table IV). In only ten eyes could we identify retinal breaks within the rudimentary retina of the coloboma. Eight

eyes had retinal breaks outside of the colobomatous area and no breaks could be found in nine eyes (Table V) . All breaks in the colobomatous rudimentary retina were of the round or oval atrophic type.

Twenty of the eyes were operated. A scleral buckling procedure was used for all cases. Radial scleral buckling on both sides of the coloboma was utilized in 14 cases. These two converging lines are reminiscent of the Chinese figure for the number 8. This operation has, therefore, come to be known as the Chinese "Figure of Eight" scleral buckle.

RESULTS

Permanent retinal reattachment was accomplished in only seven eyes (Table VI) . The final visual acuity was 20/200 in two eyes, 20/400 in two, and the other three cases had a final vision of counting fingers. There were very few postoperative complications, but one eye experienced a prominent vitreous hemorrhage, one developed cataract and vitreous haze, and there was one case diagnosed as sympathetic ophthalmia.

DISCUSSION

EMBRYOGENESIS

The embryonic optic vesicle invaginates to produce the optic cup and this has a cleft or fissure in the inferior aspect of the cup. This fetal fissure typically closes by a fusion process. Defective closure can be partial or complete. The spectrum extends from a very small colobomatous defect just below the optic nerve to a total coloboma extending from the pupil posteriorly to the optic nerve.

ASSOCIATED OCULAR DEFECTS

Coloboma of the choroid is often associated with coloboma of the iris. Other defects may include microphthalmus, microcornea, cataract, optic nerve coloboma, posterior scleral staphyloma, retrobulbar cyst, nystagmus, and strabismus.

HISTOLOGY

There is total absence of the retinal pigment epithelium and choroid, with the rare exception of an occasional choroidal vessel which still may be seen to traverse the colobomatous defect. The sclera may be thin and occasionally, staphylomatous. The retinal tissue is very thin and various authors have referred to this rudimentary retinal tissue with the following terms: abnormal, underdeveloped, undifferentiated, diaphanous, flimsy, anomalous, maldeveloped, and rudimentary.

JUVENILE RETINAL DETACHMENT

All of our patients were under the age of 30 and most other cases in the literature also involve young people. The differential diagnosis for juvenile retinal detachments includes: persistent hyperplastic primary vitreous, juvenile sex-linked retinoschisis, Marfan's syndrome, inferior temporal dialysis of the young, retinoblastoma, congenital retinal folds, retrolental fibroplasia, juvenile aphakic detachments, von Hippel's syndrome, Coats' dis-

ease, proliferative diabetic retinopathy, trauma, retinal dysplasia, Wagner's dystrophy, sickle cell retinopathy detachment, congenital nonattachment of the retina, optic pit with serous detachment, morning glory detachment, and giant retinal tear with coloboma of the lens.

PATHOGENESIS OF COLOBOMA DETACHMENT

Most eyes with choroidal coloboma do not develop retinal detachments. The reason for the occasional detachment is not clear, but some cases have been characterized by preretinal tissue in the area of the rudimentary retina and this could explain some tractional process which could eventually lead to break formation. The rudimentary retina is extremely thin, so rather minimal changes could lead to a through and through break. The most effective process for continued retinal attachment is the retinal pigment epithelial pump and this, of course, is missing in the colobomatous area. These eyes, which are typically myopic, frequently have prominent vitreous syneresis and, therefore, any retinal break might be expected to rapidly progress into a frank detachment.

LITERATURE SURVEY

The entity of choroidal coloboma is mentioned in eight general textbooks of ophthalmology, but none of them mention the possibility of an associated retinal detachment. Fifteen textbooks exclusively devoted to retinal detachment were reviewed, and only 4 of them mentioned the entity of coloboma detachment. In 1968, the Club Jules Gonin sponsored a symposium at Cambridge University on the subject of juvenile retinal detachment. There were 22 papers on this subject but only 2 mentioned coloboma detachment.^[17,18] The total experience of all participants included the management of more than 1600 cases of juvenile retinal detachment, but there were only ten detachments associated with coloboma; an incidence of 0.6%.^[24]

INCIDENCE

Jesberg and Schepens^[16] found 13 cases of choroidal coloboma out of 9900 ophthalmic patients. These 13 patients had 24 colobomatous eyes. Ten of these had detachments; an incidence of 42%. Patnaik and Kalsi^[22] studied 22 colobomatous eyes and 5 of theirs had detachments, an incidence of 23%. Our present study from China discloses the finding of coloboma detachment in 1.7% of 1536 consecutive retinal detachments. This is considerably higher than the previously mentioned incidence of 0.6% found in Europe and North America.^[17,18,24] There may be a definitely higher incidence in the Chinese race, but this may be an artifact of the referral system utilized for patients to reach the medical center in Peking. If our series is combined with that of Jesberg and Schepens,^[16] together with that of Patnaik and Kalsi,^[22] we find a total of 37 males and 15 females with retinal detachment. This combined data seems to support the impression that the entity of coloboma detachment is definitely more common among male patients.

CLINICAL FEATURES

Our findings agree with several other reports in which we note that in some cases the

coloboma is nothing more than an incidental finding in a rhegmatogenous retinal detachment definitely due to a break in full thickness retina elsewhere in the fundus. Of special interest is the group of patients where the detachment seems to be due to a break in the rudimentary retina found in the area of the coloboma. The elevation of the retina at the coloboma edge is typically very shallow, and sometimes it can only be appreciated with detailed biomicroscopy. There is usually a pigmented line along the edge of the coloboma and this might suggest a demarcation line with some adhesion, but this is not the case. This pigment line does not afford any barrier to the movement of subretinal fluid. The finding of breaks in the rudimentary retina is extremely difficult for several reasons: (1) the rudimentary retina is extremely thin, (2) the breaks are usually atrophic holes without the presence of flaps or operculae, (3) the white background of the sclera makes visualization of the breaks very difficult, (4) the tiny breaks may be hidden under the overhanging edge of the coloboma, and (5) tiny breaks may be hidden in areas of hemorrhage.

SURGERY

Several different types of scleral buckling procedures have been utilized in the attempted repair of these difficult detachments. Our limited success was generally associated with two radial scleral buckles, one on either side of the coloboma, typically placed from the ora serrata posteriorly to a point adjacent to the optic nerve. Treatment of the bare sclera of the coloboma would not produce an effective bond and therefore, treatment is limited to the area of normal tissue along the edge of the coloboma. Either diathermy or cryotherapy may be utilized.

The two radial buckles that converge posteriorly are reminiscent of the figure in Chinese script that refers to the numeral 8. Therefore, in Peking, it is common to refer to this operation as the "Figure of Eight Buckle." The anglicized equivalent for this would be "two radial converging scleral buckles." Gonvers^[23] has reported one successful case with the use of intraocular silicone tamponade. We now feel that the preferred method would be vitrectomy, endophotocoagulation, and fluid-gas exchange with postoperative positioning.

PROPHYLACTIC TREATMENT

Patnaik and Kalsi^[22] have suggested the use of prophylactic treatment by laser application along the edge of the coloboma posteriorly and cryoapplication anteriorly. Jesberg and Schepens^[16] have pointed out that any treatment along the coloboma edge creates nerve fiber bundle defects, so it would be of interest to note the nature of the visual field in the eyes that were treated prophylactically. The suggestion of Jesberg and Schepens^[16] would imply that there would be a major loss of most of the visual field.

PROGNOSIS

Virtually all previous reports agree with Jesberg and Schepens,^[16] who state that "colobomatous eyes do not tolerate surgery well." Surgical results are poor and operations are technically difficult due to the thin ectatic sclera, absence of choroid, and marked thinning of the rudimentary retina.

RESULTS

Fourteen eyes in our series were operated on with the Chinese "Figure of Eight" buckling procedure and 6 of these were reattached (43%). Six of our cases were managed with an encircling scleral buckle and only one was reattached. Our final anatomic cure was 7 of 20 (35%). This may be compared with the rather poor results generally noted in the literature (Table I). The visual result in all of our seven reattached cases was 20/200 or worse. This is partially explained by the fact that the coloboma completely surrounded the disc in the majority of our cases and the detachments were several weeks to months old before coming to surgery.

DISCUSSION

DR ROBERT B. WELCH. The authors have presented a number of cases of an unusual type of retinal detachment that is associated with a coloboma of the choroid. Their series is unique in that it comes from Peking, China, and represents 1.7% of the total number of retinal detachments seen over a 9-year period. Indeed, their 26 eyes is the largest series ever reported in the literature which spans a period of over 60 years. To obtain a comparison, I reviewed my own retinal detachment experience and found an incidence of detachment and coloboma in 0.12%. Since coloboma of the choroid is often known to be of dominant inheritance, I would like to ask the authors if there are large pedigrees of genetic syndromes associated with colobomas in this area of China and if indeed a family history was obtained in their patients?

Doctor Hilton and Doctor Wang have nicely reviewed the literature and clearly presented the clinical features, stressing the fact that there are detachments caused by peripheral breaks in eyes with colobomas as well as true colobomatous detachments secondary to breaks within or at the edge of the coloboma. Their surgical approach to these cases was the use of scleral buckling procedures and their success was highest with radial buckles along the edges of the coloboma, the so-called "Chinese Figure of Eight" procedure. Even so the success rate was low. Because of this and the technical difficulties in placing extensive radial buckles, I would propose that for those cases without peripheral breaks and with or without identifiable breaks within the coloboma a vitrectomy procedure with intraocular gas be considered, perhaps followed by laser treatment along the edge of the coloboma. I would like to close with some provocative questions for Doctor Hilton and Doctor Wang. How do these cases differ from colobomas of the disc, optic nerve pits or the morning glory anomaly, all of which may be associated with retinal detachments? Could some of these detachments be associated with subarachnoid communication or are breaks always present? Is vitreous traction a major component?

I would like to congratulate Doctor Hilton and Doctor Wang on a very interesting and well prepared paper.

DR HAROLD SPALTER. Just a question on discussion. I had one case fail to reattach. But at a time antecedent to the appearance of the detachment, this individual, who

was a 25-year-old woman-the age right, the sex incorrect according to your statistics, did develop a pharmacologically induced acute narrow angle glaucoma bilaterally. I wonder among your associated ocular anomalies whether the Chinese history has revealed any increased incidence, as an associated finding of narrow angles, perhaps again as an inherited problem and that is the question.

DR ROBERT DREWS. I would like to ask Doctor Hilton if he noted whether any of these patients had heterochromia of the iris as well as the coloboma.

DR WILLIAM G. EVERETT. Recently a small group of ophthalmologists toured through China visiting various eye departments and visited the same one Doctor Hilton refers to in Peking. I think what impressed us more than anything else was that if you analyze their number of cases, you find that this major clinic in Peking with a population in excess of 14 million was doing only 150 retinas a year. This was a large number of cases to them but to us was unbelievably small considering that they were one of the only three major retinal referral centers for this area. They were drawing from surrounding populations probably in the neighborhood of 30 million. Their data does not in any way compare to ours where a comparable metropolitan area probably would have produced 1000 retinal detachments at each of the three eye units. The high number of bilateral cases suggests to me that they usually went to the eye clinic when the second eye was involved. All the data does not really relate and compare to the data from our country. I would like that having observed the level of care of retinal work in China, rather than suggest vitrectomy, fluid/air exchange, etc, they must learn the basic fundamentals of retinal detachment surgery as they are probably 20 years behind us in their level of treatment. I don't think they are ready for vitrectomy procedures as yet, where indirect ophthalmoscopy has achieved only rare usage.

DR H. MACKENZIE FREEMAN. My comments are only anecdotal. They are only based on two cases but they relate to the suggestion that vitrectomy air/fluid exchange and endophotocoagulation could be worthwhile in these cases. I think it is very worthwhile. The two cases that I did do with endophotocoagulation, vitrectomy and air/fluid exchange were reattached. It is very difficult to place a radial buckle as far posteriorly as the disc. It is very difficult to place cryo and endodiathermy and not without complications but these two cases did work and I would suggest that additional cases be handled in that manner.

DR RONALD G. MICHELS. We have had experience similar to that of Doctor Freeman, and we have also used vitrectomy and fluid/gas exchange, followed by photocoagulation around the margin of the coloboma, to treat three cases with retinal detachment due to breaks within the coloboma. These cases have been successful. However, our experience has shown that a firm chorioretinal adhesion is needed or there will be recurrent detachment. To achieve a firm chorioretinal adhesion, prolonged intraocular tamponade is useful. Air alone is not sufficient in most cases and tamponade lasting for about 1 week is preferable. We prefer sulfur hexafluoride or another long acting gas.

To answer one of the questions Doctor Welch raised, we have recently published our experience with a single case of the morning-glory type coloboma and rhegmatogenous detachment due to a break within the coloboma. In that eye we evacuated the subretinal fluid through the break by vitreous surgery means, thus demonstrating a communication between the vitreous cavity and the subretinal space. I agree with Doctor Hilton that optimal management of these cases probably involves delimiting the area of the coloboma by photocoagulation because it seems impossible to flatten the retina within the area of the coloboma. If the coloboma surrounds the optic nerve, as in the case of the morning-glory syndrome, Krypton laser photocoagulation may be advantageous to minimize damage to the overlying nerve fiber layer. We used Krypton in our case of the morningglory syndrome, and the patient recovered vision to the level that had been documented prior to the detachment.

DR SLOAN WILSON. I would like to simply make one additional comment related to your very nice paper, Doctor Hilton, and to agree with the two previous discussants. I suggest you consider a scleral reinforcement at the time of your original surgery, such as the Miller-Thompson-Snyder procedure for high myopia and posterior staphyloma. This would give posterior support in addition to the vitrectomy.

DR GEORGE F. HILTON. I am grateful for my colleagues who have added some constructive comments as well as raising a few interesting questions. There are a number of systemic syndromes that include coloboma as part of the picture and those have been listed in our paper that will be published. We did not identify any of these syndromes within this particular population of China. I am grateful that three of our commentators have agreed with the notion of vitrectomy and pneumatic retinal reattachment with a long-acting gas tamponade and we hope to pursue that further. Regarding the possible relationship to the macular detachments seen with pits of the optic nerve head, we think this was quite different. These detachments are not rhegmatogenous and we feel that it is unlikely that we would cure them with either a buckle or air exchange. I think the mechanism of pit-related detachments still remains debatable and it has indeed been debated here many times. As to the possible role of vitreous traction, I will just say it was not identified on the biomicroscopic examination around these little breaks. They all had vitreous detachments. We did not see any instances of narrow angles, or angle closure glaucoma, nor was heterochromia recognized.

Thank you for your comments and questions

Table I : COLOBOMA WITH RETINAL DETACHMENT (SURVEY OF THE LITERATURE)

YEAR	AUTHOR	NO OF EYES	NO OF EYES OPERATED	NO OF EYES REATTACHED
1922	Brinton ¹³	1	0	—
1925	Wagener and Gipner ¹⁴	2	0	—
1926	Komoto ¹⁵	3	0	—
1961	Jesberg and Schepens ¹⁶	10	7	4

续表

YEAR	AUTHOR	NO OF EYES	NO OF EYES OPERATED	NO OF EYES REATTACHED
1969	Rendahl ¹⁷	3	2	0
1969	Gailloud et al ¹⁸	7	*	*
1972	Limaye ⁴	1	0	—
1978	Zhang ¹⁹	4	4	2
1979	Zinn ²⁰	1	1	1
1980	Bao ²¹	5	4	2
1981	Patnaik and Kalsi ²²	5	4	2
1983	Gonvers ²³	1	1	1
1985	Present study	26	20	7
Total		69	42	18

* Data not available

Table II : RETINAL DETACHMENTS ASSOCIATED WITH CHOROIDAL COLOBOMA (1970~1979)

No of patients	25
No of eyes	26*
Male: female	19 : 6
Age range	11~29
Race	Chinese
Right: left eyes	10 : 16
Vision 20/400 or worse	20
Coloboma surround disc	14
Incidence	1.7% of 1536 detachments

* In eight cases the retina of the fellow eye could not be visualized.

Table III : ASSOCIATED OCULAR ANOMALIES

ANOMALIES	NO OF EYES (%)
Coloboma of iris	26 (100%)
Microphthalmos/microcornea	16 (61.5%)
Cataract	20 (76.9%)
Optic nerve coloboma	3 (11.5%)
Nystagmus	16 (61.5%)
Strabismus	6 (23.1%)

Table IV : EXTENT OF RETINAL DETACHMENT

NO OF QUADRANTS	NO OF EYES
One	1
Two	3
Three	1
Four	21
Total	26