

南開大學中國社會史研究中心資料叢刊

# 近代旅遊指南彙刊

41



鳳凰出版社

南開大學中國社會史研究中心資料叢刊

# 近代旅遊指南叢刊

41



鳳凰出版社

第四十一冊

中國名勝	第十一種	天臺山 一集	民國十二年	.....	一
中國名勝	第十一種	天臺山 二集	民國十三年	.....	三七
中國名勝	第十三種	五臺山	民國十四年	.....	六七
中國名勝	第十五種	盤山 一集	民國十一年	.....	九九
中國名勝	第十五種	盤山 二集	民國十一年	.....	一三五
中國名勝	第十六種	大房山 二集	民國十三年	.....	一六五
中國名勝	第十七種	華山	民國十三年	.....	一九七
中國名勝	第十八種	武夷山	民國十三年	.....	二三一
中國名勝	第十九種	天目山	民國十四年	.....	二六三
中國名勝	第二十種	雲臺山	民國十三年	.....	三〇一
中國名勝	第二十一種	莫干山	民國十四年	.....	三三七
中國名勝	第二十二種	勞山	民國十五年	.....	三七三

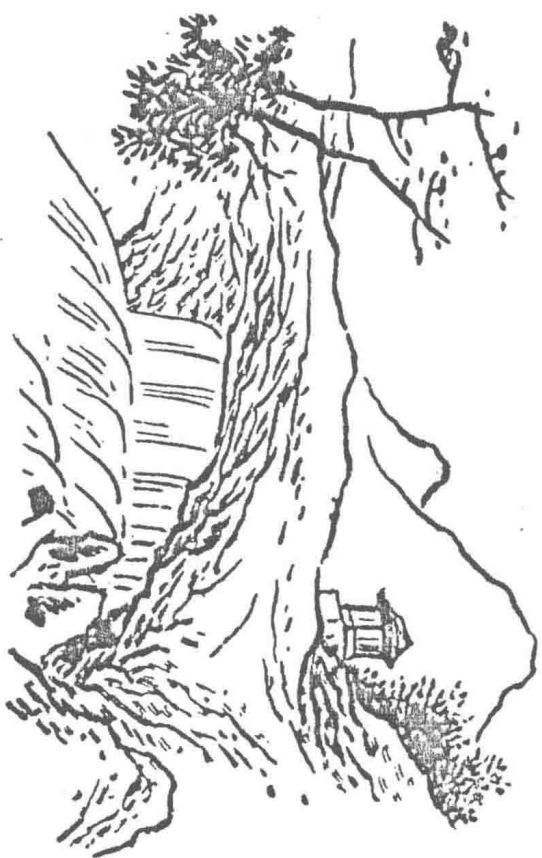


中國名勝 第十一種

天臺山一集

民國十二年





中國第一名勝  
天台山四種一集

# Scenic China

SERIES XI : VOL. I

TIENTAI SHAN

TIENTAIHSIEN, CHEKIANG

總 經

商務印書館出版

COMMERCIAL PRESS, LIMITED

SHANGHAI



## 天台山弁言

天台山在浙江天台縣北。志稱高一萬八千丈。周圍八百里。要未經實測。然其博大雄奇。實可稱嶽以余所經。岱衡二嶽比之。不如天台遠甚。自上海往游者。或自台州之天台縣入山。或自紹興之新昌縣入山。皆三日程。昔人以爲僻遠。莫敢命駕。殆不可語於今日矣。余於民國五年十月。偕傅沅叔（增湘）白栗齋（廷燮）張菊生（元濟）三君。自上海赴台州之海門。由海門至臨海。由臨海遶陸入天台。凡游覽五日而畢。攬赤城。登華頂。徜徉方廣。有梁於天台勝景。未得十之一會。天雨不能久待。遂由新昌歷嵯縣百官至寧波。遶海而歸。在山中得攝影十數紙。而於足跡所未至者。則委攝影師補足之。故天台之奇景。乃悉萃此冊。略爲續文。附以說明。並及里程食宿。以諗世之好游者。

民國六年蔣維喬識

## 旅行須知

自上海赴海門。在南門外大鑪橋乘往來上海海門汽船。一日兩夜。可至汽船。價房艙三元四角。統艙官艙。加減半數。自海門至臨海（舊呂州府）約八小時。可到汽船。價官艙六角。超等房艙四角。房艙三角。統艙二角。臨海舊爲台州府首縣。城中雖有旅館。然不清潔。惟有寺觀在山上。名八仙宮者。較佳。住宿一日。每人約五角。僕役另給酒資。自臨海輪埠至八仙宮。輿擔夫每名連酒資一角八分。輪埠入城之輿夫。不能行山路。故赴天台須在臨海另雇輿夫。即託八仙宮道人代雇亦可。每人每日約一元一角。連飯食在內。另給酒資。自臨海至天台約九十里。乘肩輿破曉啓行。一日可至。宿於天台南



麓國清寺。寺爲天台之大叢林。極宏大。客房亦多。

山中輿夫。又較城中所雇者穩而速。故游天台者。至國清寺。宜換輿夫。大約輿擔夫。每日每名八角。另給飯食及酒資。

寺中食宿。每人每日約一元。

自國清寺至華頂。四十五里。若天非暢晴。則山頂多雲。可先游近旁赤城山等處。天晴可登華頂。須黎明即行。則一日可達。否則中途宿於高明寺。

華頂多雲。濃時則對面不見一物。自高明赴華頂。若不遇暢清之日。則可先至上方廣。方廣去華頂不過十五里。登陟甚便。且石梁瀑布。爲天台最著名者。不妨多盤桓數日也。

若欲探斷橋珠簾之勝。可自方廣前往。瓊臺雙闕。稱爲絕險。桃源幽秀。寒明二巖。亦稱奇特。如欲探之。非十餘日不能窮也。

自天台南境入山。北境出山者。則出山時。應宿於萬年寺。或太平庵。如仍由南境出山。則可回國清寺。重策行李。亦可寄於國清。

自太平庵至新昌。五十里。破曉行半日可達。至新昌城午膳。城中無飯店。祇有小麵館。自新昌至嵊縣。三十餘里。嵊縣商業繁盛。遠過新昌。客店亦可住。

自嵊縣至百官。百四十里。須趁逢船。價甚廉。每客不過數角。若專雇一船。大者價入元。到後另給酒資。二波雇船須託船行。百官有臨江樓。飲饌甚佳。價亦低廉。

又有龍江旅館。可住頭等。每日大洋二角四分。二等一角六分。自百官至寧波。一百七十里。可乘甬百鐵路汽車。頭等二元。二等一元。三等六角五分。

由寧波坐汽船回滬。一夕可達。房艙價約每人八角。

# 中國名勝天台山一集目次

一	國清寺
二	雙澗迴瀾
三	國清寺塔
四	國清寺前七佛塔
五	赤城棲霞
六	赤城山頂寶塔
七	塔頭遠望
八	真覺寺前竹林
九	智者大師真身寶塔
十	高明寺
十一	智者大師龍衣紫金鉢貝葉經
十二	圓通洞
十三	高明山
十四	高明山下看雲石
十五	大寒風關
十六	華頂峯善興寺
十七	善興寺前森林
十八	華頂峯茅篷一
十九	華頂峯茅篷二
二十	華頂峯拜經台前
二十一	太白書堂
二十二	華頂蓮峯庵
二十三	華頂慈雲庵前茶圃
二十四	天封寺
二十五	淨土庵
二十六	上方廣寺前森林
二十七	中方廣寺

## PREFACE

T'ien T'ai Shan (天台山) is situated to the north of T'ien-T'ai Hsien (天台縣). Chekiang Province (浙江省). It is said in geography books that this mountain is 18,000 feet high and 800 *li* around, but these measurements were not made by actual surveying. Yet, owing to its loftiness, its extensiveness, and its grandeur, it is really a great mountain. The famous T'ai Shan (泰山) of Shantung and Hêng Shan (衡山) of Hunan which I visited some years ago, are far inferior compared to this Mountain.

Visitors from Shanghai may get to the mountain either by way of T'ien-T'ai Hsien of Taichow (台州) or by way of Hsin-Ch'ang Hsien (新昌縣) of Shao Hsing (紹興), both being a journey of three days. Owing to its seclusion and the long distance to reach it, people of old regarded the mountain almost inaccessible, but this cannot be said at the present day.

In October of the Fifth Year of the Republic (1916), I went to visit this mountain with Messrs. Fu Yuan-shu (T'seng-hsiang), Pai Li-chai (T'ing-kuei) and Chang Chu-shêng (Yuan-chi). We went from Shanghai to Haimên of Taichow and then to Linghai. From Linghai we travelled by land to T'ien T'ai Shan. Owing to a sudden change of weather, our visit lasted only five days. We visited the "Red-City" Mountain; we climbed up to the summit of Hua Ting Peak; we enjoyed ourselves at Fang K'wang and Shih Liang, celebrated monasteries and the Stone Beam; but what we took in is less than one-tenth of the beautiful sceneries of T'ien T'ai. As it rained almost continuously, we decided to cut short our stay on the mountain. We took the road from Hsin Ch'ang to Ts'ên Hsien, thence to Pai K'wan, and then to Ningpo, where we took the steamer and came back to Shanghai.

I took more than ten pictures when on the mountain. The pictures of the other places which we did not have the chance to visit were taken by the photographers whom we engaged when we were returning. So now we

have gathered all the wonderful sceneries of Tien T'ai Shan in these two books of views. I take pleasure in putting them in order, with a description for each picture, and also in giving some information about the journey, for the benefit of travellers who wish to visit this wonderful mountain.

V. J. TSIANG.

*Shanghai, June, Sixth Year of the Republic (1917).*

## Guide for Travellers to Tien T'ai Shan

To go from Shanghai to Haimên (海門), you should go to the Ta Da Wharf (大達碼頭) at the Southern District (南市) of Shanghai and take the steamer plying between Shanghai and Haimên. It takes only one day and two nights to make this trip. The fare is as follows:

First-class cabin 官艙	\$5.10
Second-class cabin 房艙	3.40
Third-class (deck) 統艙	1.70

It takes about eight hours for the steamer to sail from Haimên to Linghai (臨海) (formerly T'aichowfu, 台州府). The fare is—

First-class cabin 官艙	\$0.60
Special Second-class cabin 超等房艙	0.40
Second-class cabin 房艙	0.30
Third-class (deck) 統艙	0.20

Linghai was formerly the leading District of T'aichowfu. There are a number of hotels in the city, but they are not clean. Pa Hsien Kung or "Eight Fairies' Temple" (八仙宮), a Taoist temple situated on the mountain is a much better place. The charge at the temple is \$0.50 a day for each person, with extra tip for the waiters.

Each coolie charges eighteen cents, including tip, for carrying sedan-chairs or luggage from the Linghai Wharf to the Eight Fairies' Temple.

The coolies who carry sedan-chairs from the Wharf into the city are not good for the mountain roads. So travellers to Tien T'ai Mountain should hire special chair-coolies. A convenient way is to ask the Taoists of the said temple to hire them. The wage is \$ 1. 10 a day for each coolie, including rice money but excluding tip.

The distance between Linghai and Tien T'ai Mountain is about 90 *li*. If you start at daybreak riding in sedan-chairs from Linghai, you will reach the mountain at the end of the day. There you may stay in the Kou Ching Temple (國清寺) at the foot of the southern side of the mountain. This is one of the biggest Buddhist temples at Tien T'ai Shan, and this temple has many rooms for guests.

The coolies living in the mountain are better than those hired from the city. They can carry chairs more steadily and go faster. On this account, it is advisable for you to change your chair-coolies when you reach the Kou Ching Temple. Each coolie charges eighty cents a day for carrying chairs or luggage, with extra rice money and tip. It costs one dollar a day per person for board at the Temple.

The distance between the Kou Ching Temple and the top of Hua Ting Peak (華頂峯) is 45 *li*. It is very cloudy at the top if the weather is not fine; then it is advisable for you to visit "Red-City" Mountain (赤城山) and other near-by places first. On a fine day you may go to the top of Hua Ting Peak; but you should start at daybreak in order to reach the top before dark, otherwise you have to pass the night at the Kao Ming Temple (高明寺), which is about half way.

When thick clouds surround the summit of Hua Ting Peak, people cannot see anything. At such a time if you have already reached the Kao Ming Temple with the intention of going up to the summit, you may visit the "Shang (Upper) Fang Kwang" Monastery (上方廣寺) first. The Fang Kwang Monasteries (Upper, Middle, and Lower) are only 15 *li* from the summit, and the access to them is easy. Moreover, there is the celebrated "Stone-Beam Waterfall," the most famous scenery of Tien T'ai Shan. It will pay you to stay there for a number of days and enjoy the beautiful scenes.

To see the "Broken Bridge" (斷橋) and "Pearl-Screen Waterfall" (珠簾), you can go from the Fang Kwang Monasteries. As to the other famous sceneries, such as the "Beautiful Jade Terrace" (瑤臺), "Two Look-out Towers" (雙闕), "Tao Yuan or Peach-Land Cave" (桃源洞), "Cold Cliff" and "Plain Cliff" (寒明二巖), it usually takes more than ten days to visit them all.

In case you begin your visit at the southern part of Tien T'ai Shan and leave the mountain at its northern end, you are to pass the night at Wan Nien ("Long-Life") Temple (萬年寺) or T'ai Ping ("Peaceful") Monastery (太平庵) at your departure; but if you choose to return and leave the mountain from the southern part, you go back to the Kuo Ching Temple, where your heavy luggage may be left when you begin your visit.

It is fifty *li* from the T'ai Ping Monastery to Hsin Chiang City (新昌城). By starting at daybreak you will be able to take your tiffin in Hsin Chiang City. But in the city there is no restaurant, except some small shops selling vermicelli. Travelling about thirty *li* more, you will reach Ts'en Hsien (嵗縣), where the commerce is far more prosperous than in Hsin Chiang and the hotels are good.

A journey of 140 *li* more by water will bring you to Pai Kwan (百官). The fare is very cheap, being only a few small silver (ten cents make a small silver) for each person. But if you wish to hire a vessel, a big boat will cost eight dollars and you have to pay twenty cents for tip upon arrival. In this case, it is better to ask the Boatmen's Union to hire the vessel for you.

In Pai Kwan there is a restaurant named Ling Kiang Lou or "Towering-over-River House" (臨江樓). You can get very good food and drink there at low price.

There is also a good hotel called Lung Kiang Li Kwan or "Dragon-River Hotel" (龍江旅館). The charge for a first-class room is twenty-four cents a day and for a second-class room sixteen cents.

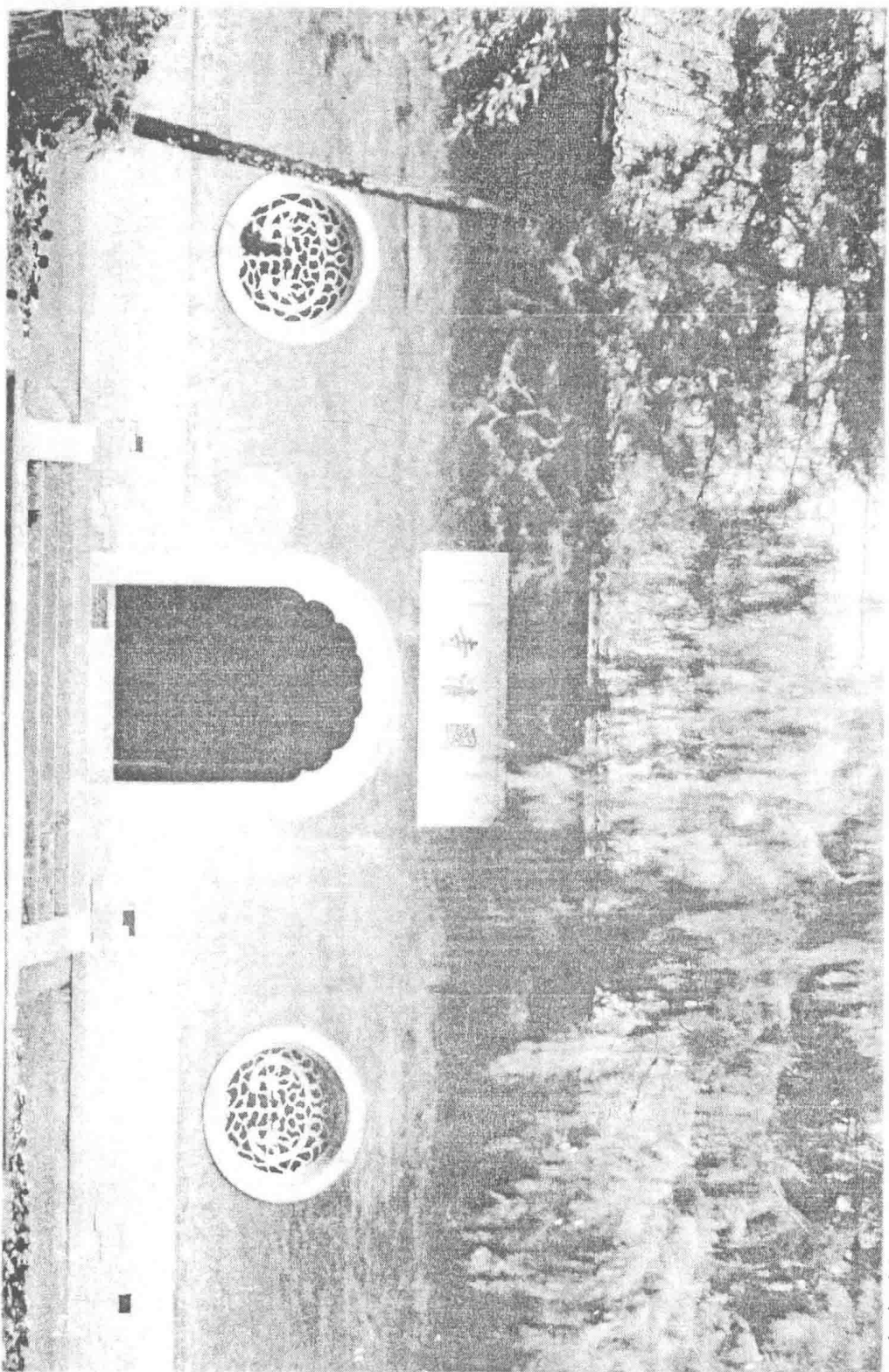
You can go to Ningpo (寧波) from Pai Kwan by train. It is a journey of 170 *li*. The fare is two dollars for the first class, one dollar for the second and sixty-five cents for the third.

From Ningpo to Shanghai by steamer takes but a night. The cabin fare is about eighty cents for each person.



(1) Kuo Ch'ing Temple (Buddhist)

寺清國 (一)

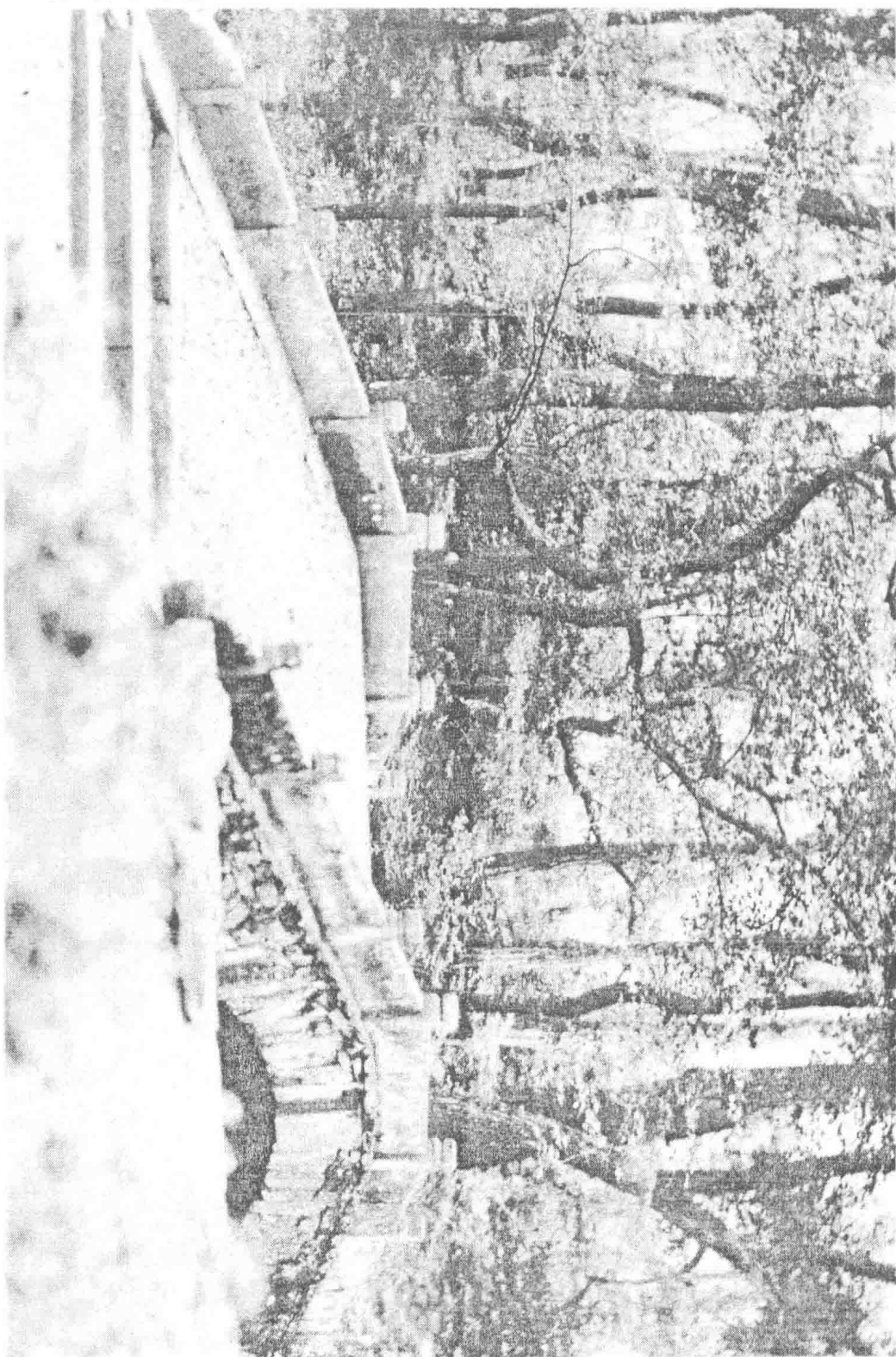


天台山 (二樓)

幸在天台山中  
隨聞皇時  
僧智顗所創  
號賜帝  
者大智  
師清維  
正十一年  
敕建  
凡從  
古  
州  
游  
天  
台  
者  
必  
先  
此

(2) Two Streams meet under Fêng Kan Bridge (in front of Kuo C'ing Temple)

網迴淵雙 (二)

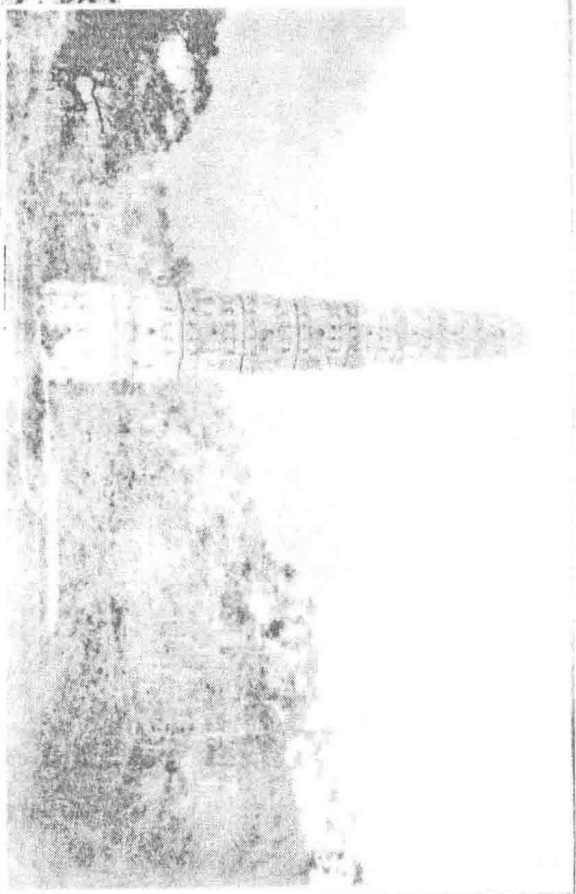


天台山 (一集)

網迴淵雙橋故 流合此至 溪兩右左旁寺 名得師禪千數因 橋千豐有前寺清國

(3) Kuo Ch'ing Temple Pagoda

塔寺清國 (三)



塔佛七前寺清國 (四)  
(4) The "Seven Buddha Pagodas"  
in front of Kuo Ch'ing Temple



塔在國清寺前  
有九級高  
五十五丈  
助皇爲智者大  
師題

塔七名佛之  
一毘婆尸佛  
二尸棄佛  
三毘舍離佛  
四淨飯王佛  
五拘留孫佛  
六俱舍尼佛  
七迦葉佛  
尼迦牟尼佛

天台山 (二集)