

山水卷

「第二辑」

中国画名家 闫禹铭

画库

Collected Artworks of Famous Chinese Painters



四川出版集团 四川美术出版社



闫禹铭

1962 年生于河北省大名县

1993 年毕业于解放军艺术学院美术系

2002 年就读于中国艺术研究院第三届名家班

现为总参某部美术创作室主任兼《美术观点》编辑部副主编，《中国美术大事记》副主编

Yan Yuming

Yan Yuming, born in Daming county in Hebei Province in 1962, was graduated from the department of fine Arts of PLA Arts Institute in 1993. He studied the painting in the third famous Chinese painting experts class of Chinese Arts Academy in 2002. He is now a director of fine arts workroom of certain army of the General Staff Ministry of the PLA and an associate editor-in-chief of *Art Viewpoint* and *China Art Memorabilia*.

我画画的冲动源于我对现实的强烈感受，感受是一种思考，那是对时代、对历史和传统文化的深刻理解，然后，化成视觉艺术。我认为，绘画不仅是视觉的，更是心灵的。视觉艺术的价值并不只是愉悦，更应该能够慰藉灵魂。

《美术观点》素来以“直面美术，阐述观点”为编辑主旨，在重视美术学术建设、艺术实践理解和媒体品牌构建的同时，也注重对艺术家在艺术创作过程中的理性思考以及其作品所传达的观点的研究与传播，形成了作者、编者与读者三者之间的良好互动关系，在中国美术界产生了积极影响。

《中国画名家画库》系列丛书的出版，旨在弘扬中华民族优秀文化，展现当代中国画界具有学术探索精神的老中青艺术家的艺术成就，并对他们的学术观点和艺术成果按画科（人物、山水、花鸟）分辑，个案成册，以便广大艺术家、读者之间学习交流、研究借鉴。

编者

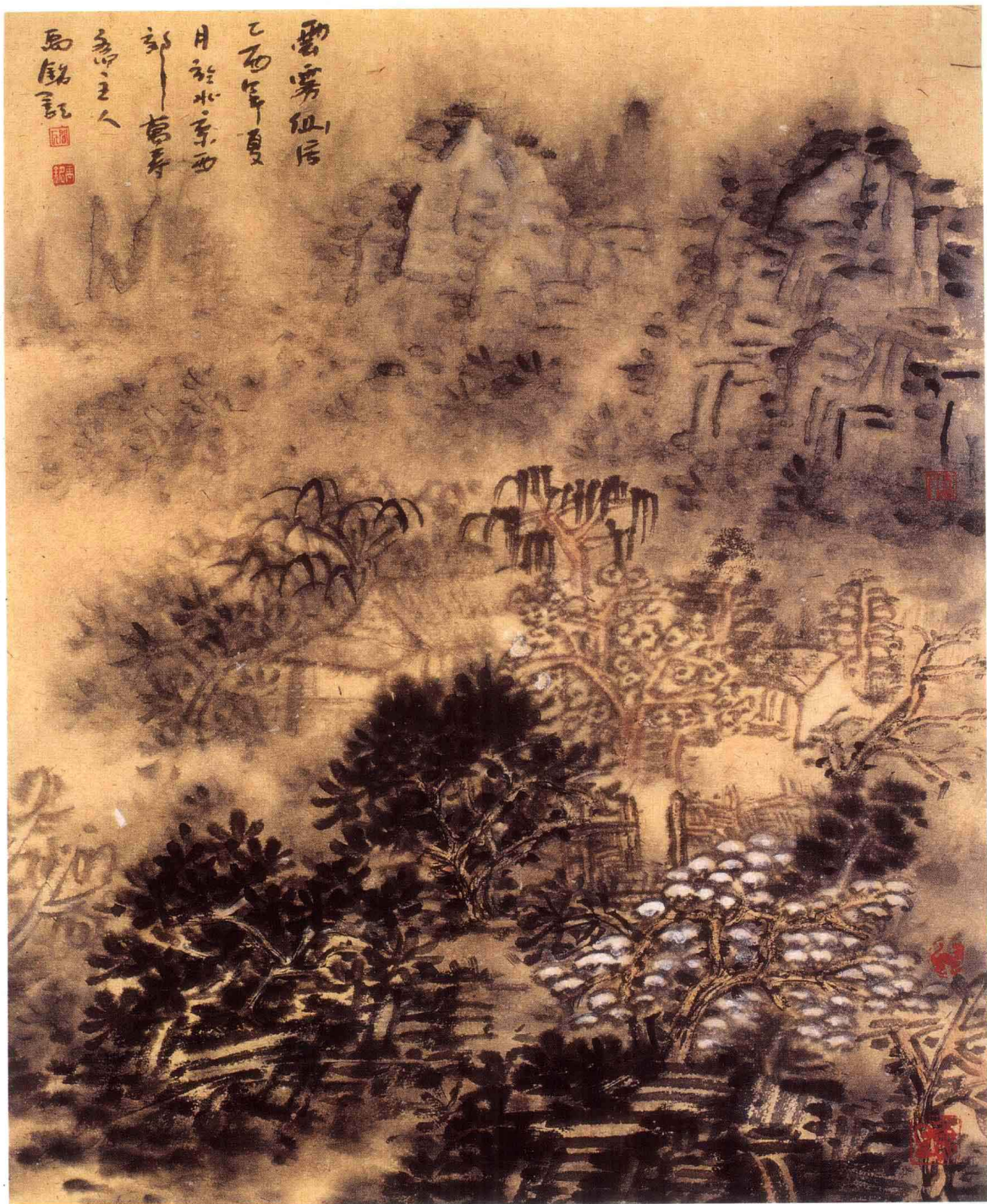
2006年8月

Art Viewpoint takes iDirect dialogue between artists and audiencei as its guiding editorial principle. The journal emphasizes simultaneous development of the study of fine arts, theory and practice in art, and the quality of multimedia. It also emphasizes research and explication of the creative process of artists and the meaning of what they want to express in their work. The aim of the journal is to improve the mutual understanding and relationship among authors, editors, and readers. It has had a major impact on the art world in China.

The publication of the book series, *Collected Artworks of Famous Chinese Painters*, showcases the excellence of Chinese culture and exhibits the achievements of various generations of contemporary Chinese painters. As a research reference, the series examines the work and perspectives of each artist according to different genres of painting to foster communication and understanding between artists and their audience.

Editor

August, 2006

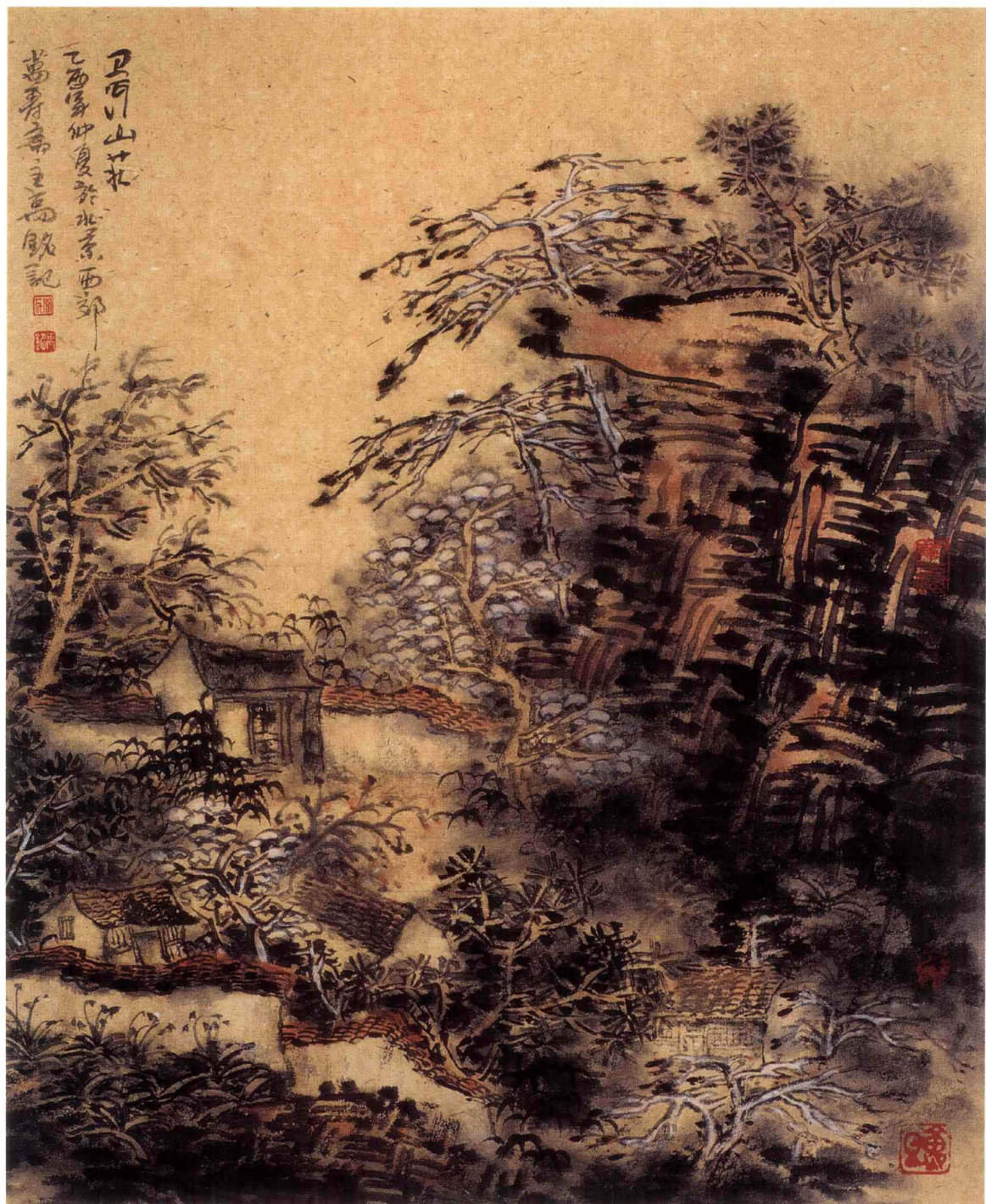


云雾仙居 纸本设色 58cm × 38cm 2005





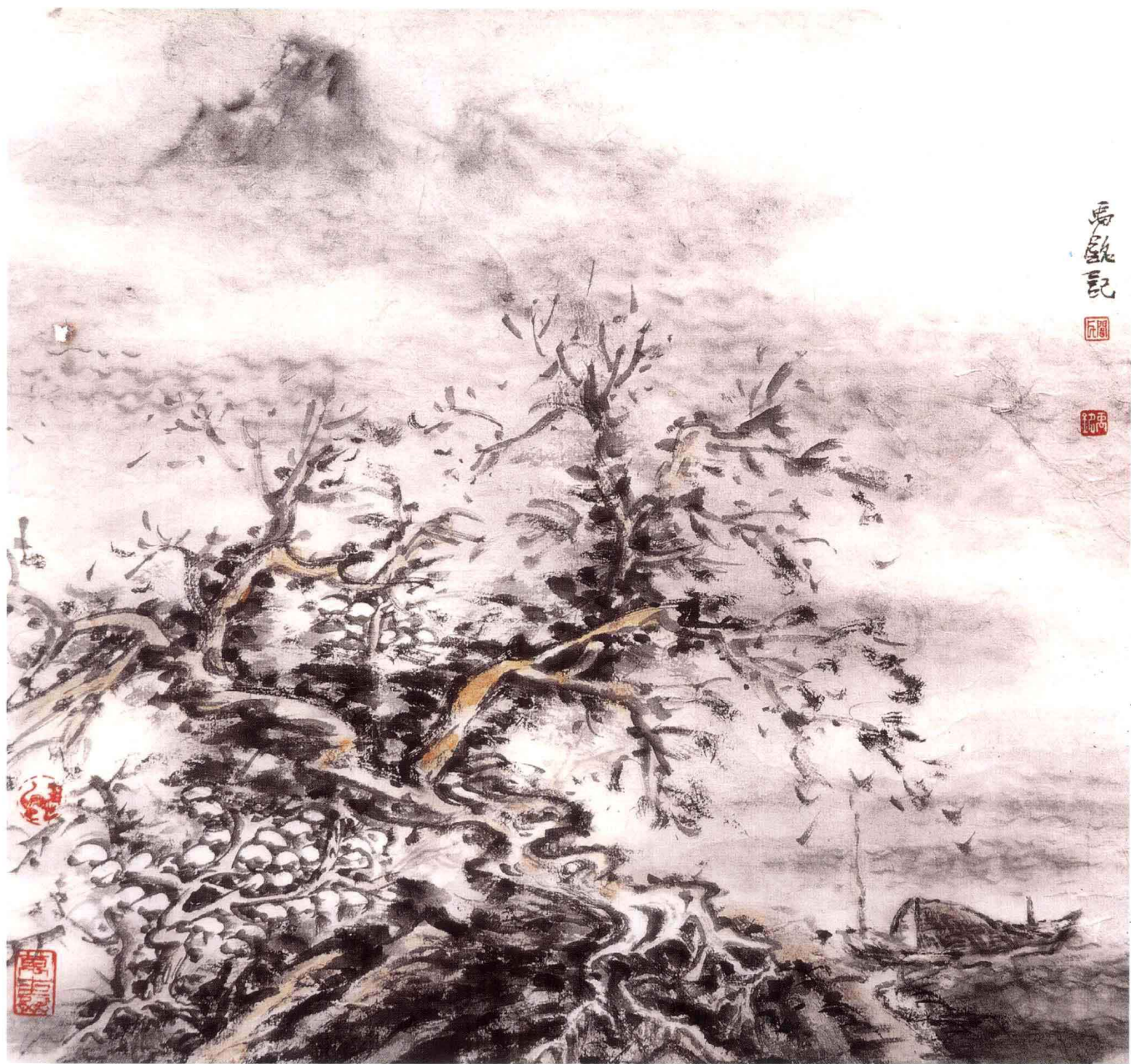
秋居图 纸本设色 58cm × 38cm 2005

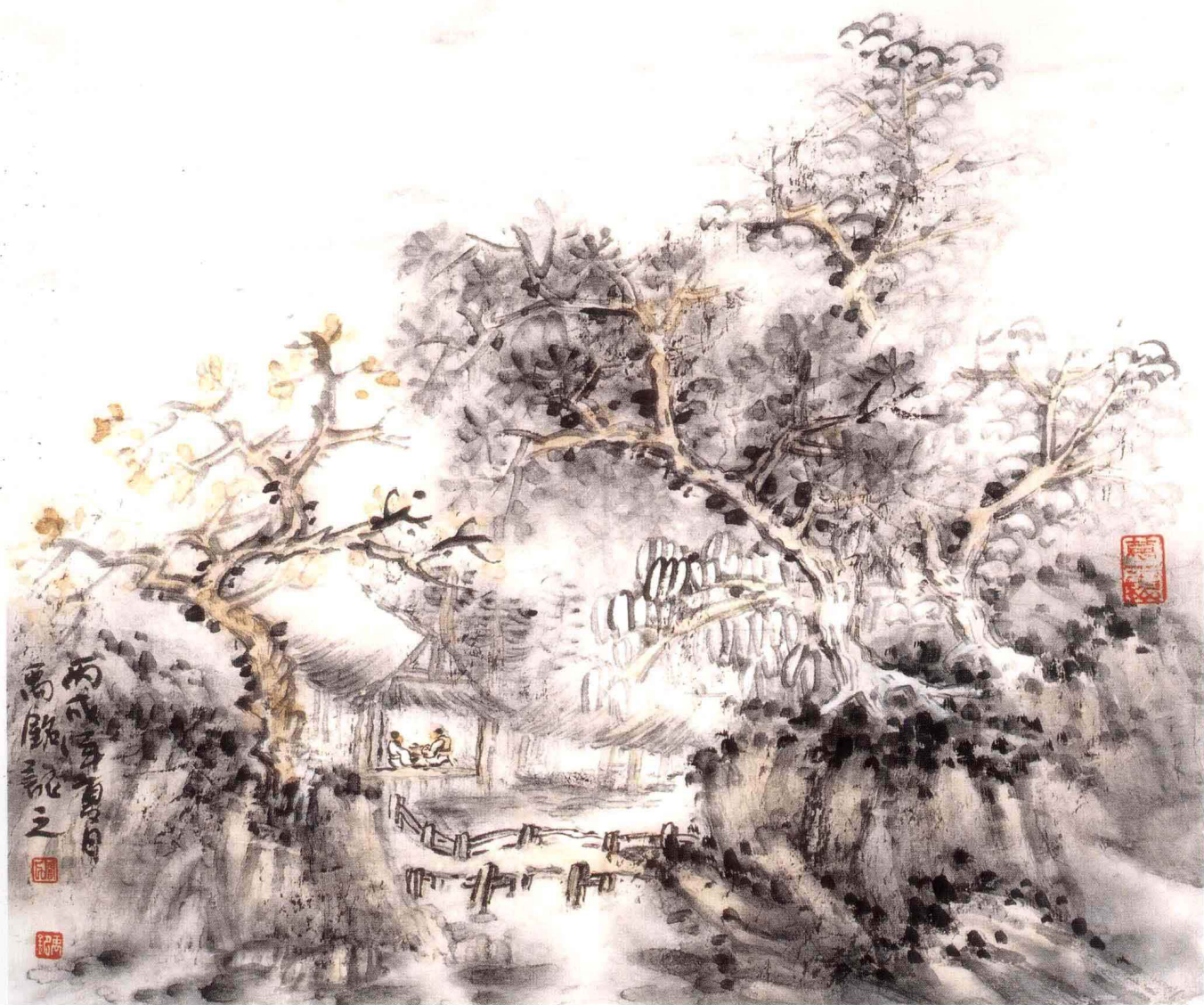


卫河山庄 纸本设色 58cm x 38cm 2005

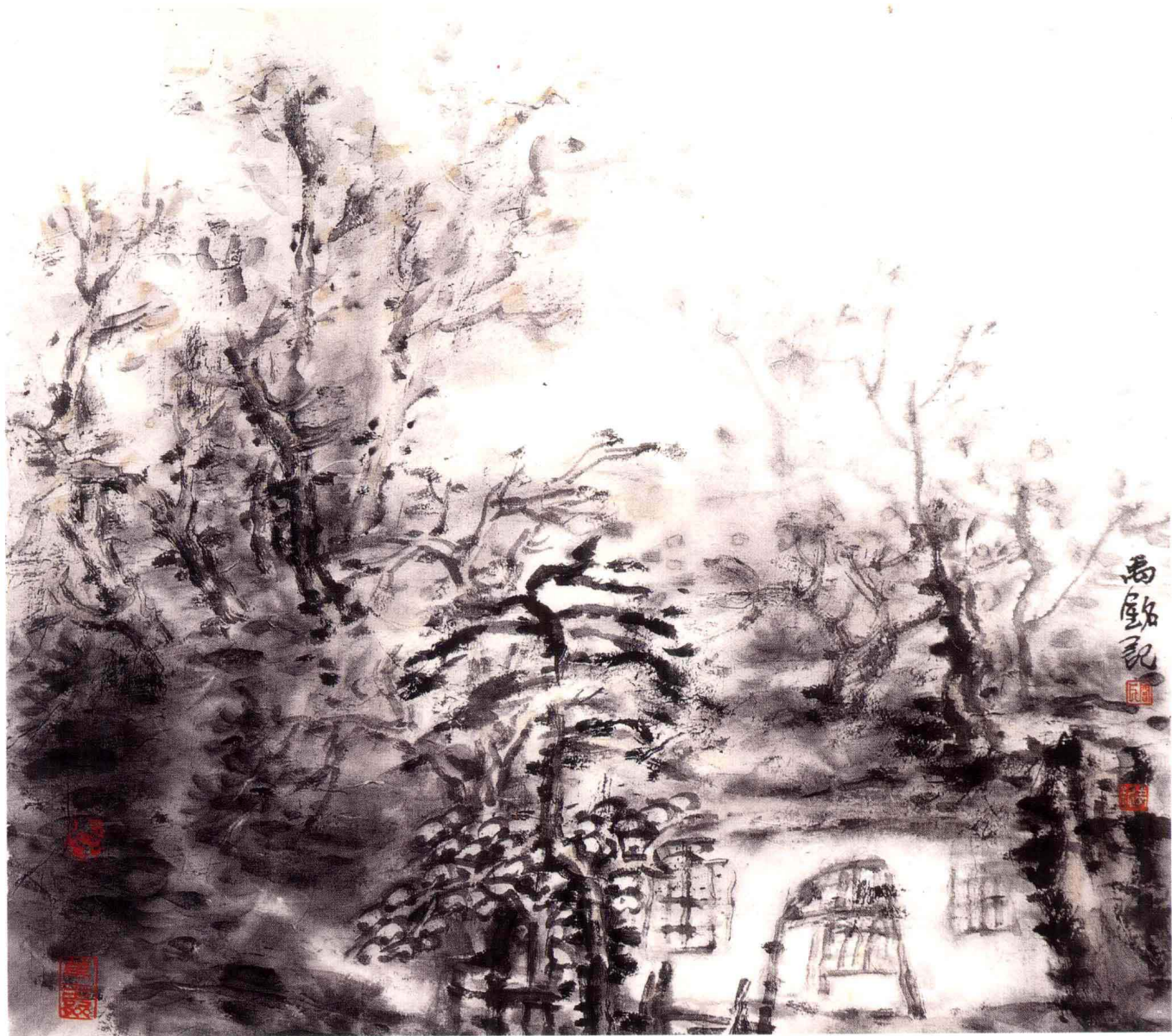


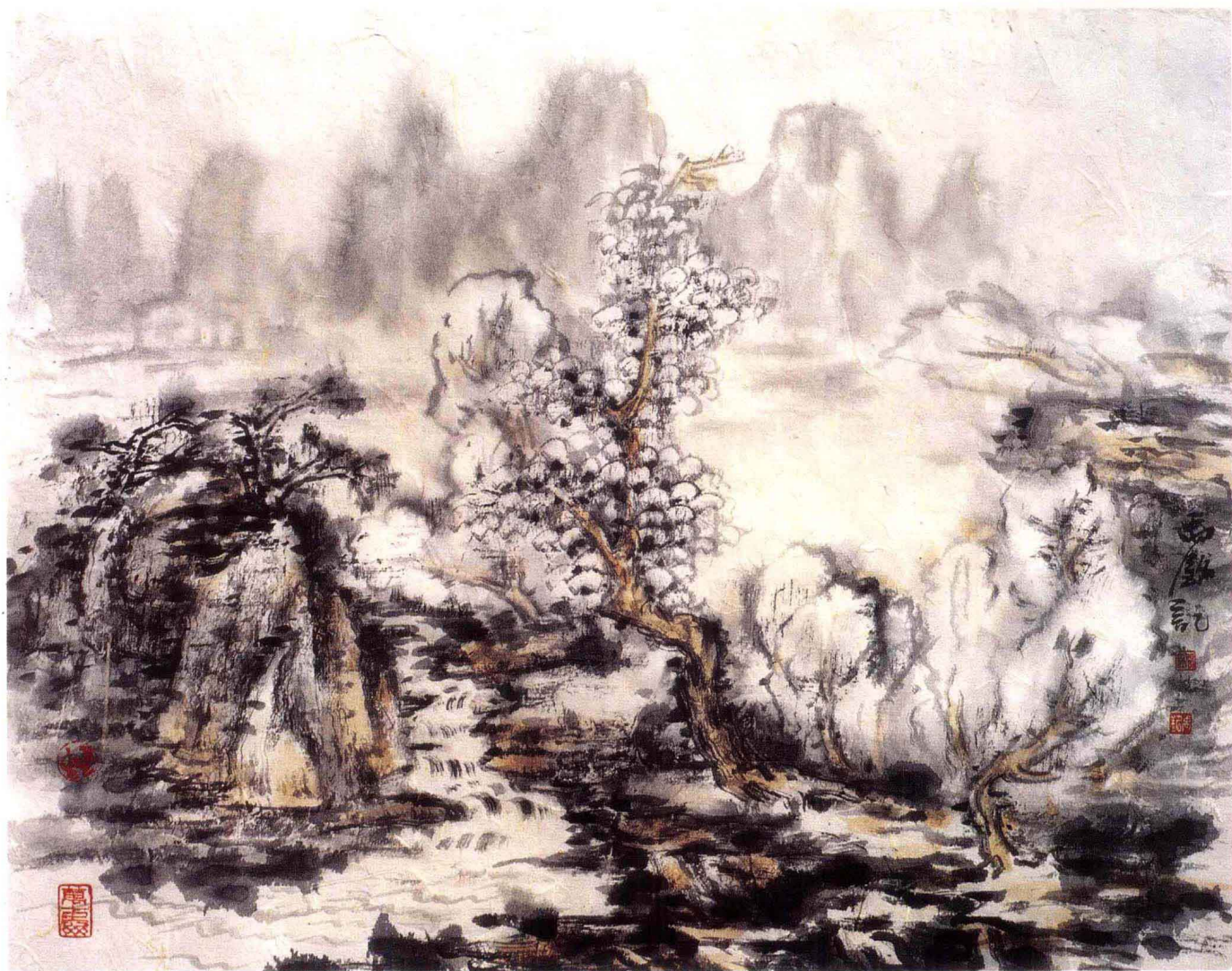
云雾仙居 纸本设色 58cm × 38cm 2005





山居对弈 纸本设色 35cm x 35cm 2006





山林溪绕 纸本设色 34cm × 35cm 2006



烟雲山居

乙酉年

隆冬於

北京西郊

北園書齋主

