

花鸟卷

「第一辑」

中国画名家 安林

画库

Collected Artworks of Famous Chinese Painters



四川出版集团 四川美术出版社



安 林

1962 年生于广西

毕业于广州美术学院中国画系

现为广州美术学院副教授，硕士研究生导师

AN Lin

AN Lin, born in Guangxi province in 1962, was graduated from the department of traditional Chinese painting in Guangzhou Academy of Fine arts. He is now an associate professor and a supervisor of master postgraduate in Guangzhou Academy of Fine arts.

在不厌其烦地往画里添积新东西的同时，我也在不断地往画外丢包袱，沉迷于画面加加减减地转换游戏之中。我从不崇尚用笔的霸气、用墨的豪气、用色的亮丽……不以宏篇巨幅唬人，不靠精雕细琢服人，我将运笔的速度放缓、收敛削弱锋芒和火气，重新认识身边的那些司空见惯的物象，用独特的眼光和方式捕捉表现那些平凡的画材。



《美术观点》素来以“直面美术，阐述观点”为编辑主旨，在重视美术学术建设、艺术实践理解和媒体品牌构建的同时，也注重对艺术家在艺术创作过程中的理性思考以及其作品所传达的观点的研究与传播，形成了作者、编者与读者三者之间的良好互动关系，在中国美术界产生了积极影响。

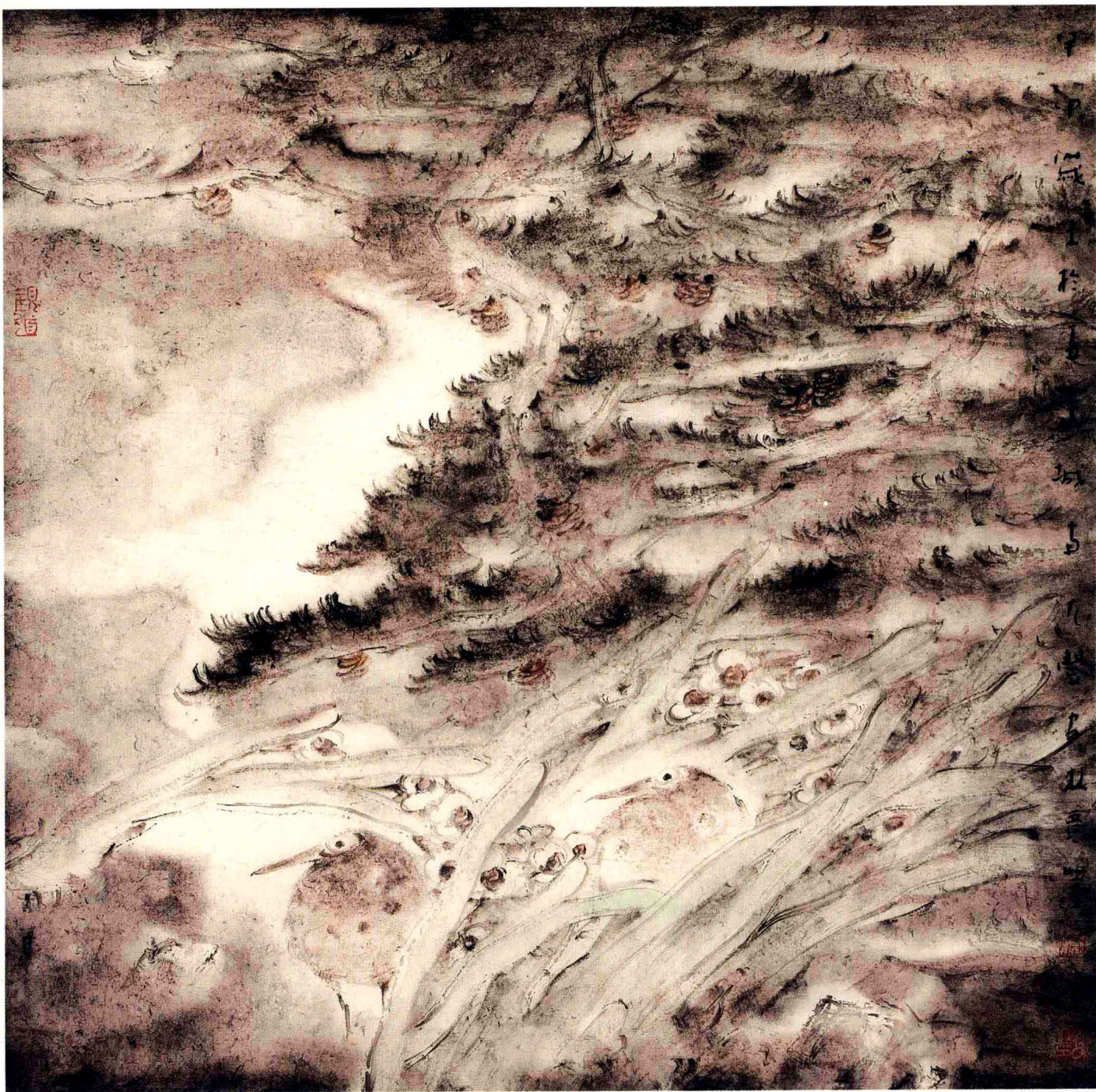
《中国画名家画库》系列丛书的出版，旨在弘扬中华民族优秀文化，展现当代中国画界具有学术探索精神的老中青艺术家的艺术成就，并对他们的学术观点和艺术成果按画科（人物、山水、花鸟）分辑，个案成册，以便广大艺术家、读者之间学习交流、研究借鉴。

编者
2006年3月

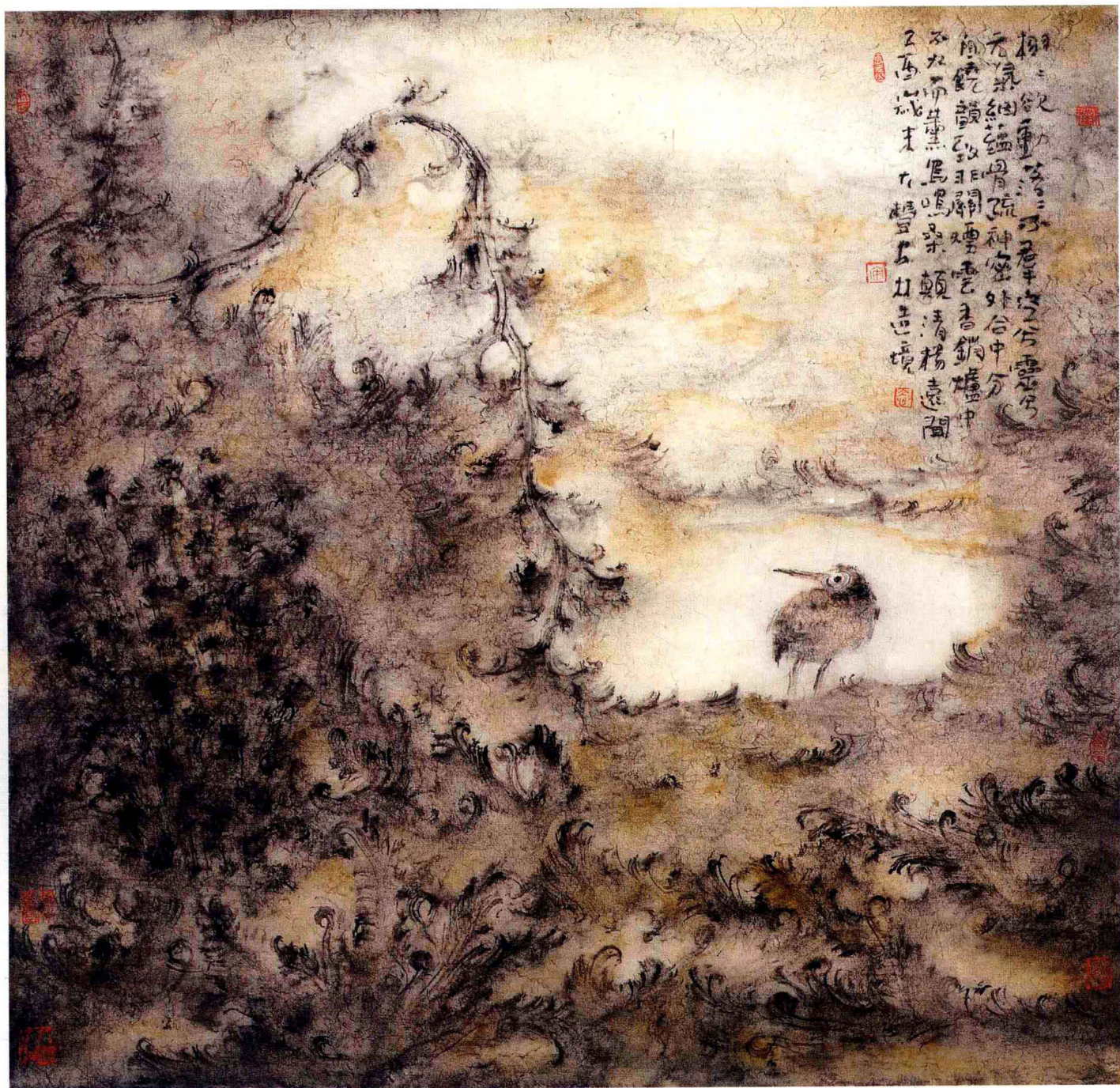
Art Viewpoint takes "Direct dialogue between artists and audience" as its guiding editorial principle. The journal emphasizes simultaneous development of the study of fine arts, theory and practice in art, and the quality of multimedia. It also emphasizes research and explication of the creative process of artists and the meaning of what they want to express in their work. The aim of the journal is to improve the mutual understanding and relationship among authors, editors, and readers. It has had a major impact on the art world in China.

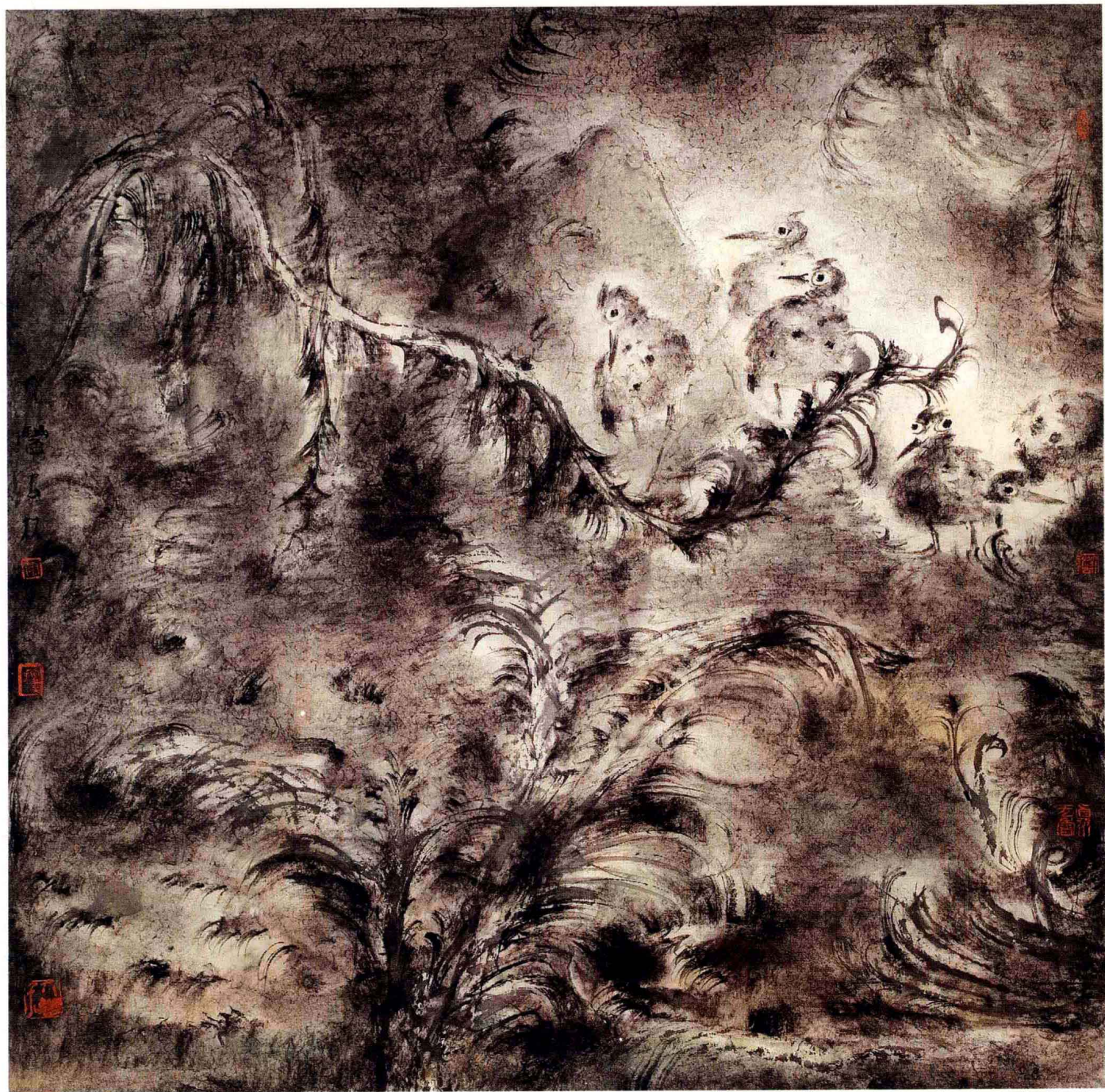
The publication of the book series, *Collected Artworks of Famous Chinese Painters*, showcases the excellence of Chinese culture and exhibits the achievements of various generations of contemporary Chinese painters. As a research reference, the series examines the work and perspectives of each artist according to different genres of painting to foster communication and understanding between artists and their audience.

Editor
March, 2006





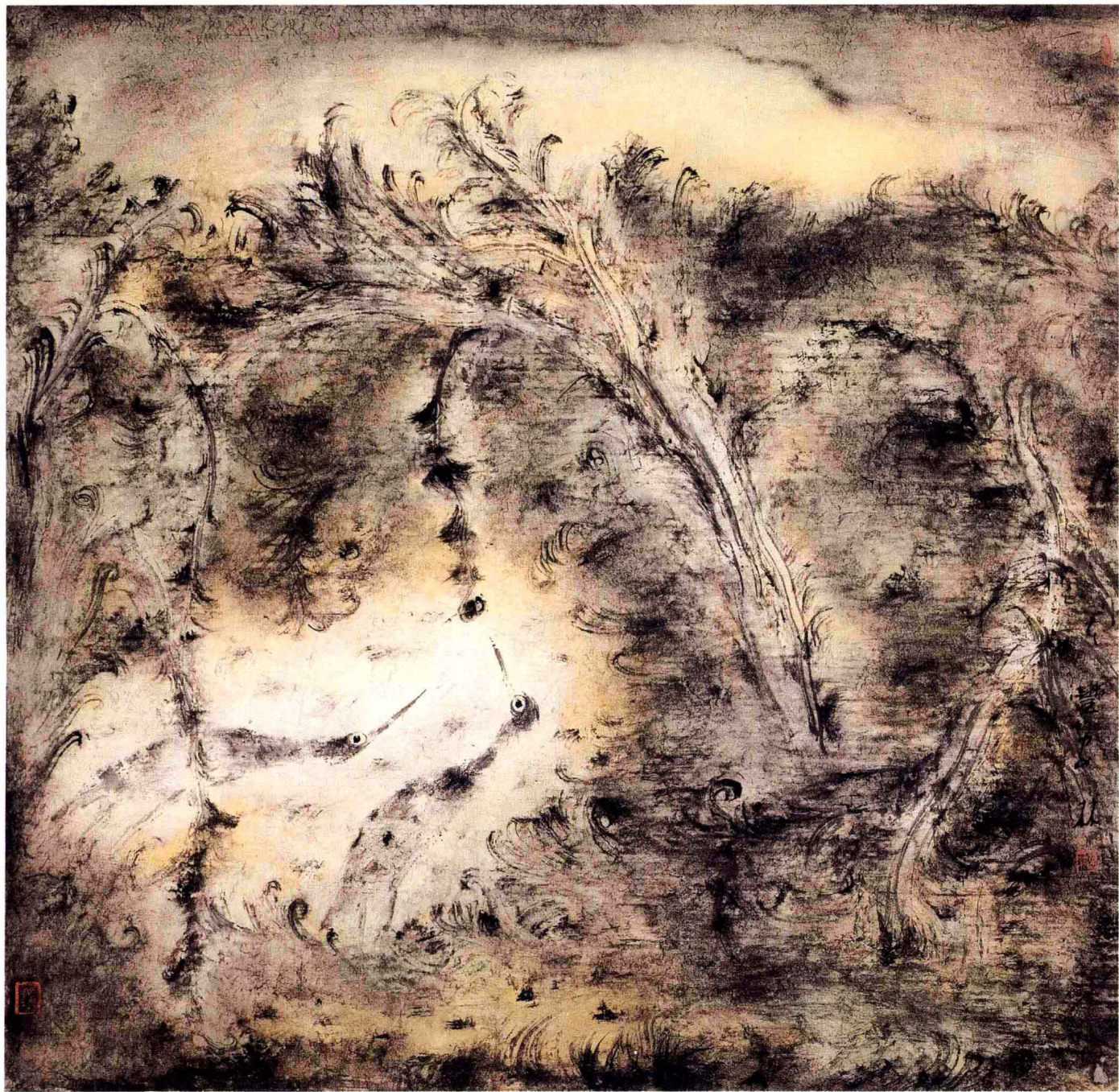




素日流天 纸本设色 68cm x 68cm 2005



天地間氣
萬物皆生
草木之花
鳥獸之鳴
百代以來
無所不有
此畫之妙
在於自然
不假人工
故云自然



云闲客寻香 纸本设色 68cm × 68cm 2005



秋风瑟瑟鸟倦飞 纸本设色 68cm × 68cm 2006







寒漪清音 纸本设色 45cm × 40cm 2005



茶浓客至 [之一] 纸本设色 45cm x 40cm 2005



茶浓客至 [之二] 纸本设色 45cm × 40cm 2005

