

陝  
西



出土  
青銅器

BRONZES  
FROM  
NORTHERN SHAANXI

..... 3

編著 陝西省考古研究院  
主編 曹璋 四川出版集團

巴蜀書社





主編 曹璋

# 陝北出土青銅器

編著 陝西省考古研究院

第三卷

四川出版集團  
巴蜀書社

2009·成都



Edited by CAO WEI

**BRONZES  
FROM NORTHERN  
SHAANXI**

Written by Shaanxi Institute of Archaeology Research

VOLUME III

**BASHU PUBLISHING HOUSE  
SICHUAN PUBLISHING GROUP**

2009 • CHENGDU

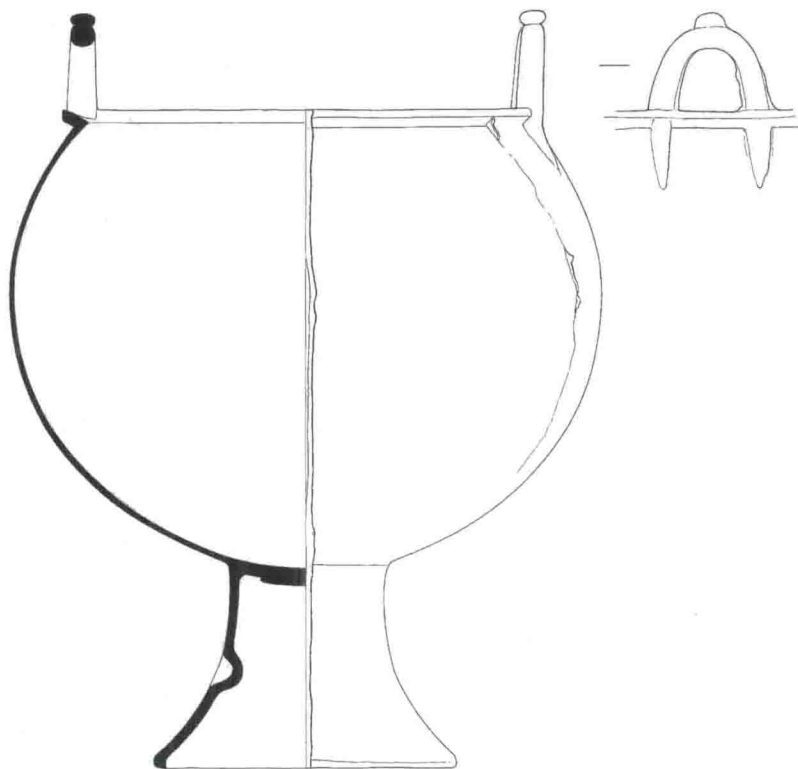


外腹壁補痕



内腹壁補痕





0 3.0cm



圈足底部

### 素面鍍（靖邊518）

春秋晚期至戰國早期

1985年出土於陝西省靖邊縣席麻灣鄉大溝村小圈莊

現藏於陝西省靖邊縣文物管理委員會辦公室

通高30.4cm、口徑18.5cm、腹深18.9cm，重量4031g

半圓形耳緊附於口沿，耳頂部有乳突，球形深腹，圈底，圈足外侈。素面。

### *Fu cauldron*

Late Spring Autumn Period to Early Warring States Period

Discovered in 1985 at Xiaoquanzhuang, Dagoucun, Ximawan, Jingbian County, Shaanxi Province

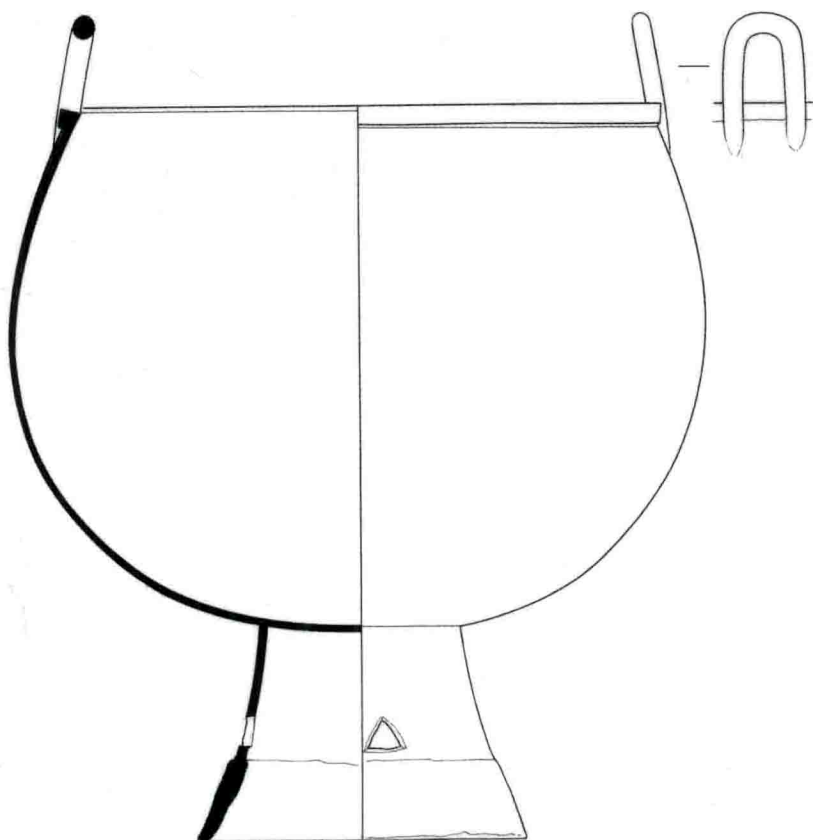
Office of Cultural Relics Administration of Jingbian County, Shaanxi Province

Height 30.4 cm, diam. at mouth 18.5 cm, depth of belly 18.9 cm, weight 4031 g

The globe-shaped bowl of this *fu* stands on a flared ring foot. Two U-shaped inverted handles are attached to an everted rim. Prominent mold marks, running from the rim to the edge of the ring foot, bisect the vessel. Traces of repair are visible at a few places.







0 2.5cm

### 素面鍍（陝歷博445）

春秋晚期至戰國早期

出土於陝西省黃陵縣阿黨鄉寨頭河

現藏於陝西歷史博物館

通高27.3cm、口徑20.4cm、腹深17.8cm、重量3770g

半圓形耳附於頸部，球形腹，圈足外侈，圈足有三個三角形鏤孔。素面。

### *Fu cauldron*

Late Spring Autumn Period to Early Warring States Period

Discovered from Zhaitouhe, A. dang, Huangling County, Shaanxi Province

Shaanxi History Museum, Xi'an

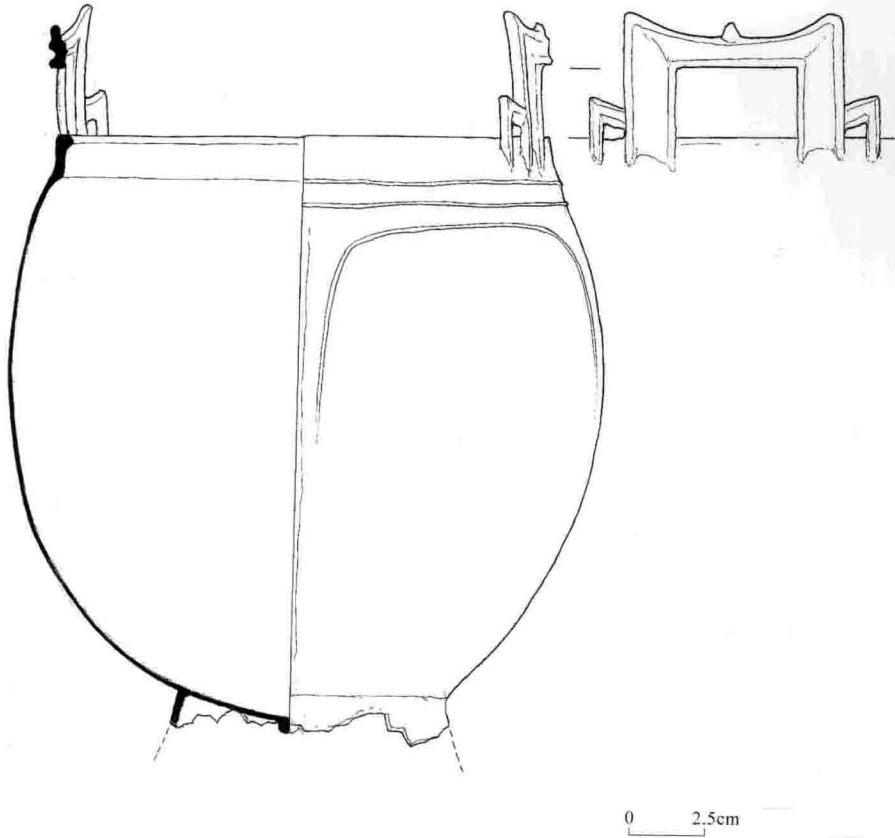
Height 27.3 cm, diam. at mouth 20.4 cm, depth of belly 17.8 cm, weight 3770 g

The deep round belly of this *fu* cauldron stands on a cylindrical foot with three triangular aperture flaring toward the rim. Two inverted U-shaped handles rise inward from a modeled rim. Visible mold marks run vertically on the belly and foot of the vessel.









## 弦紋鍍（榆陽68）

漢代

1982年於榆林市榆陽區小紀汗鄉菠蘿灘村徵集

現藏於陝西省榆林市榆陽區文管所

殘高24.6cm、口徑16.8cm、腹深19.0cm、殘重1465g

方形耳緊附於口沿，耳兩側再接雙繫，深腹外鼓，圓底，圈足殘斷。頸部飾兩道弦紋。製作粗糙。

### ***Fu cauldron***

Han Dynasty

Collected in 1982 from Boluotancun, Xiaojihan, Yuyang District, Yulin, Shaanxi Province

Cultural Relics Administration of Yuyang District, Yulin, Shaanxi Province

Remaining height 24.6 cm, diam. at mouth 16.8 cm, depth of belly 19.0 cm, weight 1465 g

The foot of the cauldron is missing. The egg-shaped bowl of the cauldron tapers slightly toward the rim which is surmounted by two rectangular handles ending in small triangular crowns. On each handle are two additional inverted L-shaped attachments. Two bow strings encircle the neck. Casting marks run from the rim all the way to the bottom of the cauldron.





耳



下腹外壁



外底





### 素面鍍（榆陽69）

漢代

1984年於陝西省榆林市榆陽區芹河鄉徵集

現藏於陝西省榆林市榆陽區文管所

通高15.2cm、口徑14.2cm、腹深11.1cm，重量1395g

半圓形耳緊附於口沿，深腹斜收，圈底，圈足上有三個鏤孔。製作粗糙。

### *Fu cauldron*

Han Dynasty

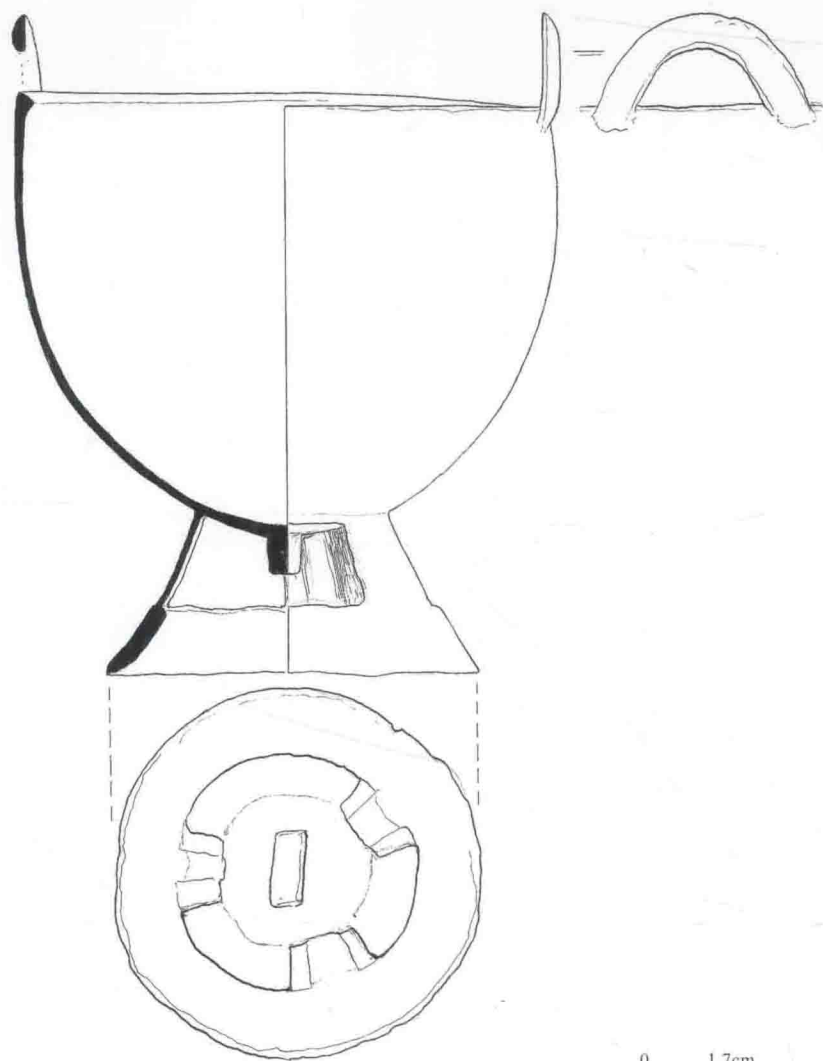
Collected in 1984 from Qinhe, Yuyang District, Yulin, Shaanxi Province

Cultural Relics Administration of Yuyang District, Yulin, Shaanxi Province

Height 15.2 cm, diam. at mouth 14.2 cm, depth of belly 11.1 cm, weight 1395 g

This plain cauldron has a round belly flaring toward the rim on which stand two arched handles. The short ring foot, conical in shape, is furnished with three trapezoidal openings. Mold marks run from the rim all the way to the bottom of the vessel.





外 底





### 素面鍍（榆陽406）

漢代

出土時間地點不詳

現藏於陝西省榆林市榆陽區文管所

殘高15.6cm、口徑14.5cm、腹深11.4cm，殘重866g

半圓形耳緊附於口沿，深腹斜收，圓底，圈足殘斷。製作粗糙。

### *Fu cauldron*

Han Dynasty

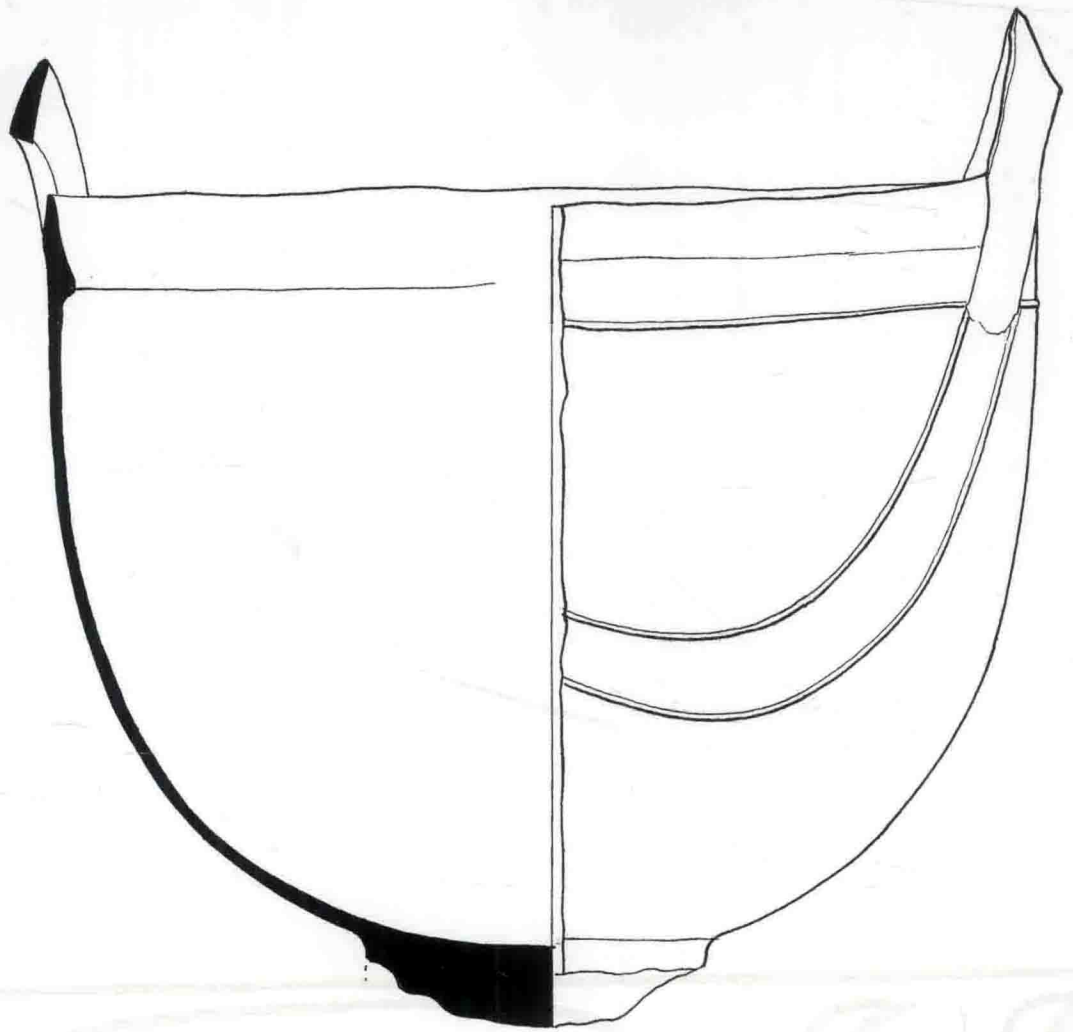
Time and location of discovery unknown

Cultural Relics Administration of Yuyang District, Yulin, Shaanxi Province

Remaining height 15.6 cm, diam. at mouth 14.5 cm, depth of belly 11.4 cm, weight 866 g

This *fu* cauldron, with a missing foot, shows a deep bowl of two arch-shaped troughed handles right below the rim. Visible mold marks run down from the rim to the bottom of the *fu*.





0 1.2cm





### 素面鍍（橫山253）

漢代

1979年出土於陝西省橫山縣城關鎮沙坪溝村

現藏於陝西省榆林市橫山縣文物管理委員會辦公室

通高16.9cm、口徑10.6cm、腹深8.9cm，重量714g

方形耳緊附於口沿，一耳殘缺，深腹斜收，圓底，高圈足外侈，圈足飾三個鏤孔。製作粗糙。

### *Fu cauldron*

Han Dynasty

Discovered in 1979 at Shapinggoucun, Chengguan, Hengshan County, Shaanxi Province

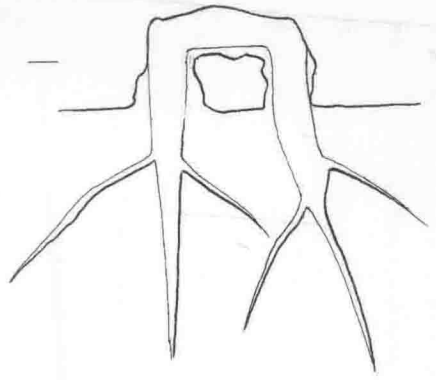
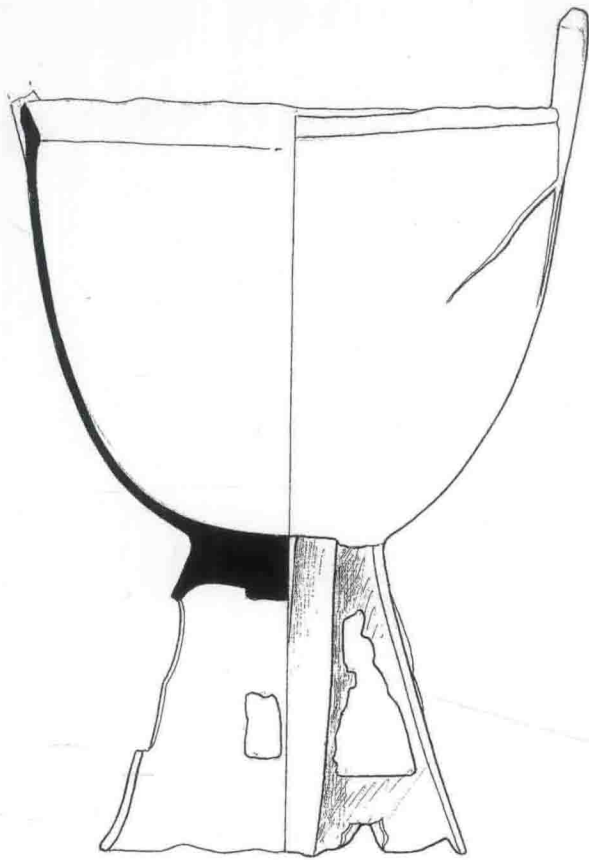
Office of Cultural Relics Administrative Committee, Hengshan County, Shaanxi Province

Height 16.9 cm, diam. at mouth 10.6 cm, depth of belly 8.9 cm, weight 714 g

The bowl of this roughly cast *fu* curves sharply inward toward a high sloped ring foot with three triangular open works. Rectangular handles (one missing) with a sloped mid-section were cast onto a thin rim.







0 1.5 cm



耳部

