



Show Flat II

Eastern Flavor

样板间 II —— 东方风情

深圳市创扬文化传播有
限公司 室内公共空间



华中科技大学出版社

<http://www.hustpas.com>

Show Flat II

Eastern Flavor

样板间 II —— 东方风情

深圳市创扬文化传播有限公司 编
室内公共空间杂志社



华中科技大学出版社

<http://www.hustpas.com>

图书在版编目（CIP）数据

样板间 II：东方风情/深圳市创扬文化传播有限公司 室内公共空间杂志社 编.
—武汉：华中科技大学出版社，2010. 10
ISBN 978-7-5609-6597-0
I. ①样… II. ①深… III. ①住宅—室内装饰—建筑设计—图集 IV. ①TU241-64

中国版本图书馆CIP数据核字（2010）第184114号

样板间 II——东方风情

深圳市创扬文化传播有限公司 编
室内公共空间杂志社

出版发行：华中科技大学出版社（中国·武汉）
地 址：武汉市珞喻路1037号（邮编：430074）
出 版 人：阮海洪
责任编辑：张 蕊
文字编辑：王 琪
书籍设计：肖 婧
封面设计：李红靖
责任监印：马 琳
印 刷：利丰雅高印刷（深圳）有限公司
开 本：965 mm×1270 mm 1/16
印 张：20
字 数：160千字
版 次：2010年10月第1版
印 次：2010年10月第1次印刷
书 号：978-7-5609-6597-0 / TU·949
定 价：268.00元（USD 68.00）

销售电话：（010）64155566（兼传真），（022）60266199（兼传真）
邮购电话：（010）64155588-8825
网 址： www.hustpas.com

（本书若有印装质量问题，请向出版社发行科调换）

Preface

The Association of Eastern Flavor

Geographically, east and west are just two converse concepts like the relationship between left bank and right bank. If you change the observing center into a point, then how to change the appearance of the world? But for history and culture, there are more connotation and extension within it.

The show flat of these days for clients and style are become more exquisite and precise.

Here, we try to make a subdivision and comment about eastern design style, and we may divide the eastern style as follows:

- 1) The eastern style of 'East Wind' – Japanese and Korean style, simple and natural, modest and quiet, such style pursues the unity of the mind and environment, making people to think about the living and life.
- 2) The eastern style of 'West Wind' – Burma and Thailand flavor, bright and shining, enthusiastic and open, with a little sense of mystery. As for the people of Burma and Thailand, they all belong to the exotic flavor, southeast area is used to be a colony, so there are lots of European elements, such design style could affect visitors' emotion and make them forget about the pressure of life, giving the relaxing experience to you.
- 3) The eastern style from South – Many historical scholars are enchanted by the charming of Jiangnan while creating its profound cultural atmosphere: gray tiles and white walls, water flowing beneath a little bridge, a winding path leads to quiet seclusion, all these make people have a artistic sense and dreamful reverie. The Chinese poet describes Jiangnan as follows: 'sunrise comes above the water surface, looking much more red than fire, when spring comes, the green water surface of the river shining like blue water, how could you don't think of Jiangnan?' Jiangnan not only has the sense of quiet, but also has stylish quality. The elements of 'Jiangnan' are extensive and abundant, with Chinese romance and enthusiasm, all of these elements seem luxurious and with strong flexibility.
- 4) The eastern style from North – Royal eunuch style, most capitals of each dynasty are situated in the north bank of Yangtze river, although the palaces are all made of wood, they look magnificent, carved beams and painted rafter, making people feel marvelous, the emperor accepts contributions from many areas around the country, even from the Western Regions. Lots collections of treasures and artistic workings reveal the demeanor of Chinese empire and we hope that such design style could be compared to the luxurious European style.

'East Wind' and 'South Style' belong to modest Chinese flavor, 'West Wind' and 'North Style' belong to the visual impact and exaggerate expression, so the eastern style is tridimensional and diversified, as the development of history and culture, they may infuse with the layout and connotation of this period. As for the show flat in reality, the style of the design should not only be trapped in a few style, we should integrate the western and eastern design as well.

The end of the east is west, the end of the west is east. No matter east or west it is, we should study from each other with the principle of respecting each other.

Martin

Guangzhou Hema Decorative Design Co., Ltd.

8/19/2010

序

东方风情的联想

在地理上,东方与西方只是相对而言的概念,如同左边和右边的关系。如果把观察地球的视觉中心换一个点,世界的模样又该如何改观呢?但历史和文化上却赋予了东西方更多的内涵和外延。

如今,地产类样板房对销售对象、风格定位越来越讲究和精准。

在此,若尝试把东方风格有意做一个有趣的细分和戏说,也许可以把东方风格分为以下几类:

一、东方的“东风”——日韩风格,质朴自然、内敛而宁静,该风格追求意境与心境的合一,引发人对生命的思考和感受,“行至水尽处,坐看云起时”。

二、东方的“西风”——缅甸风情,艳丽闪耀、热情奔放,且略带神秘,对于国人,缅甸属于异域风情,东南亚地区也确有殖民地的历史背景,所以多有欧陆风格的混搭与点缀。该风格能调动参观者的情绪,让其忘记生活压力,带来休闲度假的体验。

三、东方的“南派”——江南的魅力让历代文人雅士流连忘返,同时也造就了其深厚的文化气息,灰瓦白墙,小桥流水,曲径通幽,让人有着无限的意境和遐想。白居易曾有“日出江花红胜火,春来江水绿如蓝。能不忆江南?”的句子。江南,既有其淡雅恬静一面,也有其豪迈潇洒的气质,“江南”的题材非常广泛和丰富,具有中国式的浪漫和激情,既可显贵亦不落俗套,可塑性较强,属于个人比较推崇的风格。

四、东方的“北派”——皇家官宦风格,历朝历代中国定都多在长江以北,宫殿虽为木结构,依然宏伟浩大,雕梁画栋,蔚为奇观,天子座北朝南接受来自全国各地乃至西域的朝贡,汇集大量的财富与精湛工艺品,一派显山露水的天朝大国风范。希望该风格将来能与豪华欧式媲美。

“东风”和“南派”属较为内敛和含蓄的东方韵味风格,而“西风”与“北派”则偏向于外在的视觉冲击和张扬的表述,所以东方风情本也是立体而多元化存在的,随历史和文化的发

展也许会注入该时代的形式和内容。在实际样板房中更不必拘泥于纯粹的风格,应该综合运用,内外兼修。

东方的最东方是西方,西方的最西方又是东方。不论东西方,也可在相互尊重的前提下互相借鉴,共存共荣。

Martin

广州市和马设计有限公司

2010年8月19日



Show Flat II——Eastern Flavor

contents 目录

- 006 Wuzhou · Hai Jun Da Garden 梧州·海骏达花园
- 014 Xihu Jiayuan – The New Classical Fashion 杏湖嘉苑——新古典风尚
- 022 Nanchang Wanke Villa 南昌万科别墅
- 032 Sansheng Bali Island 三盛巴厘岛
- 038 Liu Xiang Di Cui 流香滴翠
- 046 Meilun Haoyang Lidu 美轮浩洋丽都
- 054 The Flavor of Fan Theme 扇韵
- 058 Above the World-Chongqing Xiexin Acadia Show Flat E1 重庆协信阿卡迪亚·君临天下E1样板房
- 066 Showflat A8-T10-1801 样板房A8-T10-1801
- 072 Carefree and Peaceful Blending 悠然与沉静的中西交融
- 076 Show Flat of No.404, Building 2, Zhongxin Huafu 中信华府2幢404样品房
- 082 Flower Language Shore – Chinese Style 花语岸样板房——中式风格
- 088 Elegant House in Peking 京城雅居
- 098 Hollywood 好来屋
- 104 Chinese New Trend 中式新风
- 108 HongBo · Mangrove Forest 海博·红树林
- 114 Xinghu Aoyuan Show Flat in Zhaoqing 肇庆星湖奥园样板房
- 120 Wanke Tang Yue Lan Shanju – South East Asian Style 万科棠樾澜山居——东南亚风格
- 126 Excellent Victoria Harbor 卓越维港
- 132 Wanke Eastern Coast 万科东海岸
- 140 Shenye · New Coastline 深业·新岸线
- 148 Charm unique to South of the Yangtze River 江南风韵



156 Eastern Flavor 东方情怀

166 Show Flat 3-5, Changsha Guanghui Lanting Fengjing Phrase II

长沙广汇兰亭峰景2期3-5样板间

172 Central Artistic Garden 中央美苑

178 Back to Countryside 归园田居

188 Hongjing Jingyuan Apartment Show Flat in Zhaoqing 肇庆鸿景锦园公寓样板房

194 Confucianism & Connotation 儒·韵

204 Blue Water Luxurious Garden 碧水华庭

212 New Classical Style 古韵新风

220 Chinese Elegant and Relaxing Garden 雅居乐花园中式

228 Zhengxiang Champagne Grace 正祥香槟风范

234 Golden Vienna 金色维也纳

238 Nanchang 5A Show Flat 南昌5A示范单位

244 Zhongyuan Imperial Garden – Holiday Style 中源名苑之度假式

250 Huitong · Japanese Style 汇通·日式风格

256 Dragon and Phoenix Show Flat 龙凤玫瑰园

260 Chinese Style, Elegant and Relaxing 东风渐浓, 雅韵悠悠

264 Dancer among the Clouds 云端的舞者

272 Yongchuan Thames 永川泰晤士

280 The Moon House 月舍

286 Eastern Feel Mixed with Western Charm 东情西韵

294 Happy Lane 幸福里

298 Nanjing Ya Ju Le Garden – New Chinese Style 南京雅居乐花园 —— 新中式风格

304 Oasis and Mountain 绿洲山语

312 Qinghua Type Room B4 Building No.5 Shengtian International Flat in Nanning, Guangxi 广西·南宁盛天国际5号楼B4户型之青花



梧州 · 海骏达花园



想了解更多详情，请访问 WWW.WELLMARK.NET.CN
+86 020-81037735 81037736 81037737

设计单位 | 广州市和马设计有限公司

设计师 | Martin

项目地点 | 梧州

建筑面积 | 120平方米

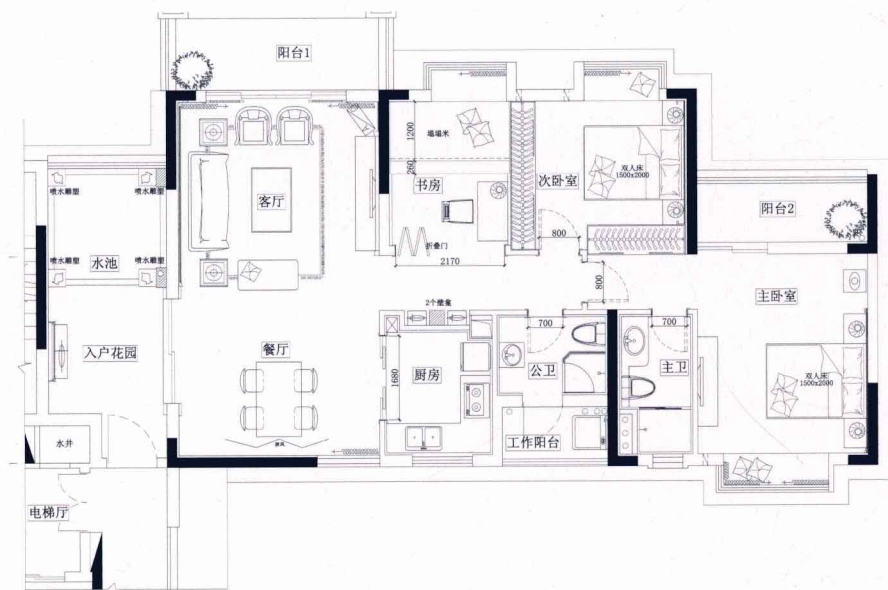
The design of this project continues Southeast Asian style which embodies natural theme, using teakwood furniture as the main part of the entire space, appropriately decorated with some luxurious and fresh fabric, creating a kind of peaceful and elegant living atmosphere. The decorations and plants with exotic

feature are decorated in this space, which shows its pleasant charming. Compared to the common Southeast Asian style, the designer abandons the gorgeous color while adopting some natural color, so as to make the living atmosphere appears more comfortable.

The design of the TV setting wall is the

highlight of this project, the huge plant theme embossment makes people broaden their eyes, under the elephant decotaion, bringing people's mind to the mysterious tropical rain forest. In addition, the carved patterns in the living room and kitchen deliver a slight Zen sensation under the light as well.







本案的设计延续了东南亚风格体现自然的主题，使用柚木家具来作为空间的主体，适当搭配一些华丽或清新的布艺，营造出一种宁静且高雅的生活环境。富有异域特色的装饰物和植物点缀其间，展露出迷人的魅力。与以往东南亚风格不同的是，本案的设计师舍弃了用艳丽色彩来渲染空间的方式，而是将一些较为自然的颜色挥洒到空间中，让居住的氛围更加宜人。

客厅中电视墙的设计是本案的一大亮点，以植物为主题的巨幅浮雕使人大开眼界，在憨态可掬的大象饰品的陪衬下，将人的思绪带到了神秘的热带雨林之中。此外，卧室和厨房中出现的镂空雕花，在灯光的烘托下传递出淡淡的禅意。













02

杏湖嘉苑——新古典风尚



设计单位 | 佳木斯市豪思环境艺术顾问设计公司

设计师 | 王严民

项目地点 | 佳木斯市通江街南段

建筑面积 | 180平方米

主要材料 | 复古砖、马赛克、复合地板、油漆、壁纸、
乳胶漆

摄影师 | 王严民

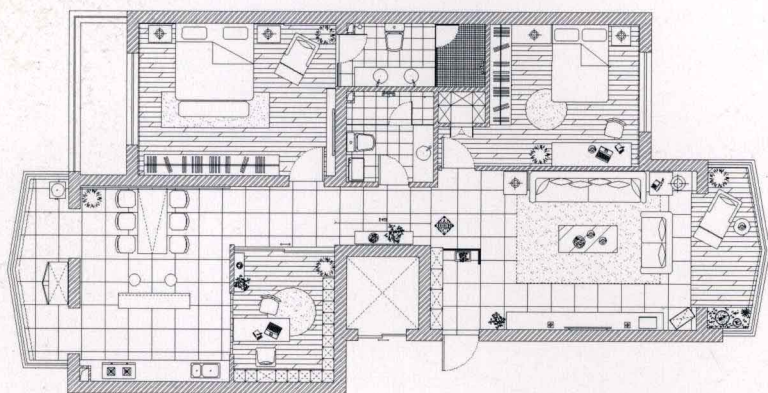
The designer of this project makes the refined Chinese classic elements merge into the modern space, using some mixed design skills to create a fresh new Chinese space. The designer uses black, white, and grey as the main color tone of the space which renders the artistic conception of Chinese painting for the space and embodies the quiet and peaceful atmosphere. The modern and simple style furniture and new classic

Chinese furniture combine together, under the old window pane, making the whole space appear a new classic fashion. The elegant and refined lotus is dotted everywhere, the unique charming lotus painting and the graphic lotus on the white tile, or even some decoration which related to the lotus, all reveal the owner's passion for lotus, making the elegant flavor merge into the space. In addition, the design of the layout of the space perfectly

reveals a sense of relaxation which create comfortable atmosphere. Looking back to the old times, we may suddenly find this is the place where we can relax ourselves. At this moment, all the impossible seems unimportant, all we want is to enjoy such quiet and graceful atmosphere.







本案的设计师将经过提炼的中式古典元素融入到现代空间中，并穿插了一些混搭手法，打造出独一无二的新中式空间。黑、白、灰作为空间的主色调，渲染出水墨画的写意境，体现出几分淡然与清幽。现代简约风格家具与新中式风格家具的组合，在古老窗格的陪伴下，使整个空间呈现出一种新古典风尚。清丽脱俗的莲花，在室内随处可见，无论是墙面上独具风韵的莲花出水图，还是白瓷上的莲花彩绘，抑或是一些与莲花有关的装饰物，都突显出房屋主人对莲花的钟爱，也将其高洁的情操渗透到空间中。此外，空间局部的设计也极好地表达出一种闲情与逸致，营造出悠闲惬意的生活氛围。

蓦然回首，恍然发现这正是自己找寻多时的静心之所，此刻，似乎一切已不再重要，只愿静静享受这份静与清雅。