

建筑/设计/全方位

OFFICE

W

办公建筑

韩国A&C出版社 著

 北京科学技术出版社

Copyright © A&C Publishing Co., Ltd.
All rights reserved.
Chinese simplified translation copyright © 2011 Beijing
Science and Technology Press Co., Ltd.

著作权合同登记号 图字：01-2010-0445

图书在版编目 (CIP) 数据

W系列. 5, 办公建筑: 英文/韩国A&C出版社著. —北京:

北京科学技术出版社, 2011. 6

(韩国最新建筑&室内细部丛书.)

ISBN 978-7-5304-5045-1

I. ①韩… II. ①韩… III. ①办公室—建筑设计—英文
IV. ①TU2

中国版本图书馆CIP数据核字(2011)第031720号

办公建筑

作 者: 韩国A&C出版社

策 划: 李 媛

责任编辑: 李 媛 王 晖

责任印制: 杨 亮

封面设计: 青鸟意识艺术设计

图文制作: 青鸟意识艺术设计

出 版 人: 张敬德

出版发行: 北京科学技术出版社

社 址: 北京西直门南大街16号

邮政编码: 100035

电话传真: 0086-10-66161951 (总编室)

0086-10-66113227 (发行部) 0086-10-66161952 (发行部传真)

电子信箱: bjkjpress@163.com

网 址: www.bkjpress.com

经 销: 新华书店

印 刷: 北京捷迅佳彩印刷有限公司

开 本: 920mm × 1260mm 1 / 32

字 数: 100千字

印 张: 8.5

版 次: 2011年6月第1版

印 次: 2011年6月第1次印刷

ISBN 978-7-5304-5045-1/T · 639

定价: 85.00元



京科版图书, 版权所有, 侵权必究。
京科版图书, 印装差错, 负责退换。

建/筑/设/计/全/方/案

办公建筑

OFFICE

美国A&C出版社 著



 北京科学技术出版社

* OFFICE





>>CONTENTS

办公建筑

**KNHC GWANGJU
JEONNAM**

分公司办公室

TOMOON Engineering & Architects Universe-
Top Engineering & Architects
UNSANGDOONG建筑公司_006

**KNHC DAEGU
GYEONGBUK**
分公司办公室

WONYANG Architectural Design Group_020

文化资源中心

WONYANG Architectural Design Group_036

**WOONGJIN
THINKBIG**

Kim in-cheurl ARCHIUM Architect_050

**DMC办公楼
(TRUTEC)**

Barkow Leibinger Architects
CHANGLO Architects_072

数字奇异空间

HEERIM Architects & Planners_084

**KORLOY HOLYSTAR
大楼**

MANO建筑公司_098

B2Y办公室

Y SPACE_110

JEOLLANAM-DO

政府办公室

G.S.建筑公司 Kim Hyunchul_120

**SEOUL 邮政中心
办公室 (SCPO)**

SPACEGROUP HEERIM Architects & Planners

HANGIL Architects & Engineers

DeStefano Keating Partners有限公司_134

**MERITZ 火灾海上
保险公司大楼**

SHINHAN Architects & Engineers KEATING/
KHANG LLP_146

TAEYOUNG YEOUIDO

大楼

WONDOSHI建筑集团有限公司_154

大韩民国驻华使馆

KUNWON Architects Planners Engineers_164

ENVISION

Design Pure_170

BLOOMING

休息大厅

VOID planning_180

MAC政府大厦

BAUM建筑工程咨询公司 ARTECH Architects

Kim Hong-il_188

HEERIM Architects & Planners_194

SPACE GROUP_200

多功能市政厅

HEERIM Architects & Planners

Kim Jung-gon_204 KIAHAN Architecture_210

KUN-WON Architects Planners Engineers_216

CHUNGCHEONG

-NAM-DO

议会和办公室

AUM & LEE建筑公司_222

海洋生物资源国立学院

HEERIM Architects & Planners DOSHIN

Architecture_228

GIMPO-YANGCHON

生态中心

YEZU建筑规划公司_236

Idea Image建筑学院_242

NODE建筑规划公司 Lee Han-gi_249

CHEONAN

主题公园建筑群

HAEAHN Architects & Planners

USUN Engineering DAMOOL Architects_254

AUM & LEE 建筑公司 TOWOO

Architects & Engineers_261

DOSHIIN Architecture DONGWOO Architects &

Consultants DS GROUP Architecture_266



>> OFFICE

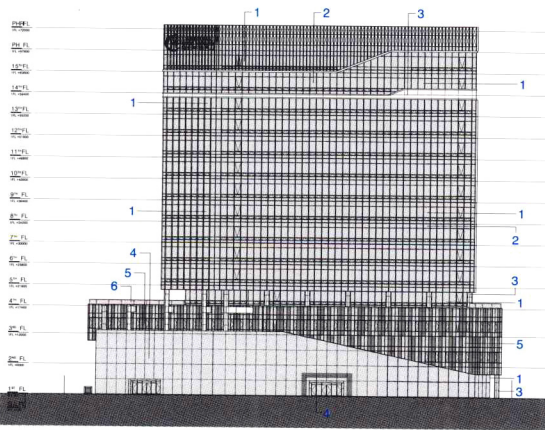
GWANGJU JEONNAM BRANCH OFFICE OF KNHC

Location Chipyeong-dong, Seo-gu, Gwangju, Korea Site Attribute Central Commerce, Fire-Prevention, District Unit Plan Site Area 4,419.10m² Building Area 2,859.26m² Total Floor Area 29,701.55m² Building Coverage Ratio 64.70% Floor Area Ratio 429.41% Building Scope B3-15F Structure RC, Steel Exterior Finish T24 Pair Glass, P.F.W, Aluminium Sheet, Granite, Exposed Concrete Architecture Design Choi Ki-chul, Han Nam-soo | TOMOON Engineering & Architects + Oh Kum-yeol | Universe-Top Engineering & Architects + Jang Yoon-gyoo | UNSANGDOONG Architects Cooperation Design Team Hong Chang-sung, Lee Seon-jeong, Choi Sang-ik, Jo Dong-ho, Choi Yun-sang Client Korea National Housing Corporation Photograph TOMOON Engineering & Architects

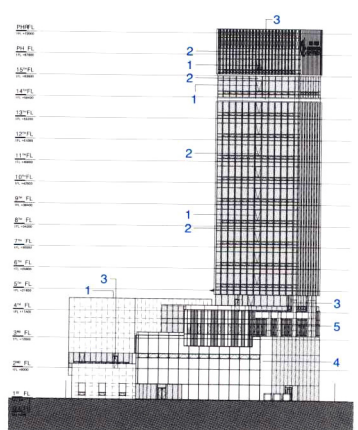
The office of the Korea National Housing Corporation in Gwangju Jeonnam was expected to play a symbolic role as a connector of the local society for housing complexes, commercial facilities, parks, public facilities and so on. The focus of the plan was expanded to a plan containing openness to the citizens, environment-friendliness, differentiated elevation and active eco-energy system with this symbolism. Light Band expressed the image of the office in Gwangju, which is called as light county, and scenic light emphasized the function of light that was involved in the construction program. The office built in an unique way with its own style has an easy access from tourism spots and the 20m-width road in front of it to be a landmark in that business area. The lower part including a square and an exhibition all was planned to be a space for the local society and external and internal squares were directly connected to each other to support the structure. The representative factor for the connected external and internal squares is two-storied open space that was processed with glass curtain wall through P.F.W construction method and water space and green landscape flows naturally through the inside and outside of the building. The elevation for business area was planned by using a vertical louver so that radiant heat control is possible for each season, and for the general building plan including natural ventilation, lighting, the top floor garden, the concept of Eco-Energy was introduced aiming to offer an business area with high efficiency. About the internal path of flow, a space to look down was planned and also a sky park in connection with a park and a broad outlook created an open atmosphere. Gwangju Jeonnam branch office of Korea National Housing Corporation, designed based on this symbolism, will give urbane infra structures and events and play a role as a connector with the local society.



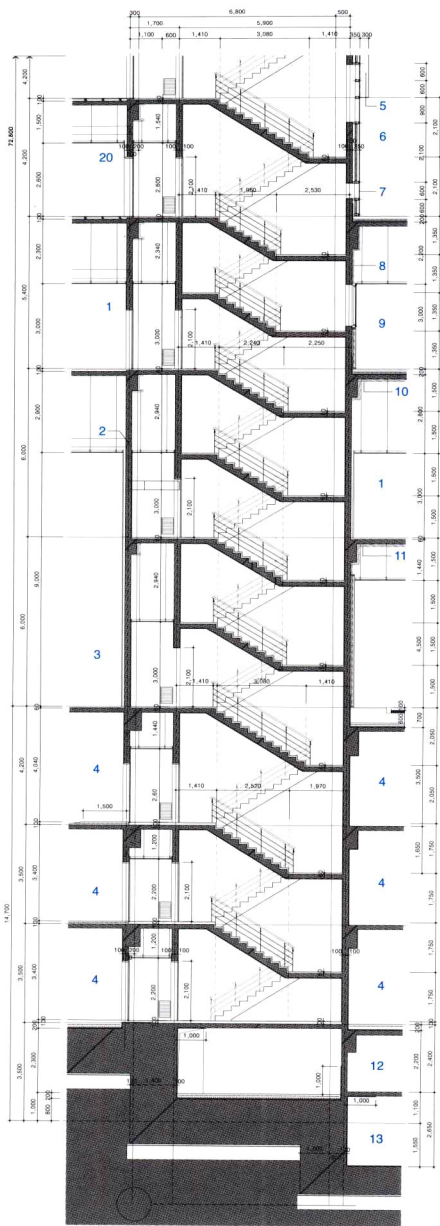
- 1 T24 COLOR LOW-E PAIRED GLASS(ONE-SIDE HALF TEMPERED)
- 2 T24 COLOR LOW-E PAIRED GLASS(DOUBLE-SIDES HALF TEMPERED)
- 3 T3 ALUMINUM SHEET
- 4 T12 CLEAR TEMPERED GLASS (P.F.W SYSTEM)
- 5 T24 COLOR LOW-E PAIRED GLASS (ONE-SIDE AND DOUBLE-SIDES HALF TEMPERED)
- 6 T12 TEMPERED GLASS



FRONT ELEVATION



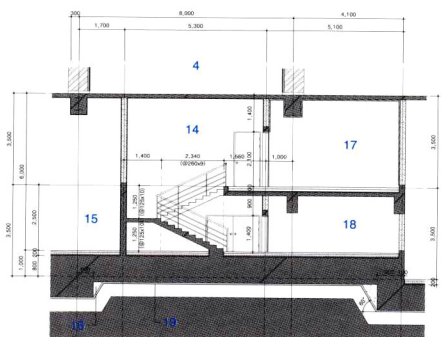
LEFT ELEVATION



STAIR CROSS SECTION (LOW-RISE)



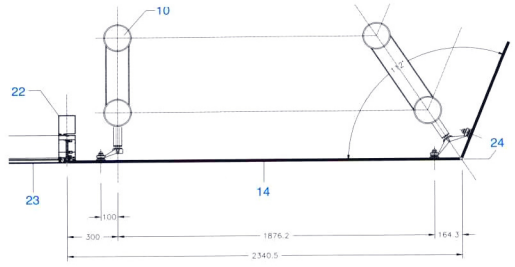
- 1 CORRIDOR
- 2 S.T RETAINING WALL OPEN(300X600)
- 3 PUBLIC INFORMATION EXHIBITION HALL
- 4 UNDERGROUND PARKING LOT
- 5 ALUMINUM CAP
- 6 ROOF GARDEN
- 7 T24 CDOR LOW-E PAIRED GLASS(ONE-SIDE HALF TEMPERED)
- 8 T60 GLASSWOOL
- 9 OUTDOOR DECK
- 10 T105 HEAT INSULATION
- 11 LIGHT GAUGE STEEL CEILING RIB / ALUMINUM CEILING PANEL
- 12 HEAVY-WATEREQUIPMENTS(MANAGEMENT)PT
- 13 HEAVY-WATER TREATMENT FACILITY
- 14 STAIRWAY ROOM
- 15 ELECTRONIC ROOM
- 16 LEVELING CON'C INFILLING
- 17 FAN ROOM
- 18 FIRE EXTINGUISHING GAS ROOM
- 19 T50 LEVELING CON'C / T0.03 P.E FILM 2FOLDS / CODDLE STONE COMPACTION (CIVIL ENGINEERING WORK)
- 20 GLASS SETTING BLOCK&QUARTER LOCATION



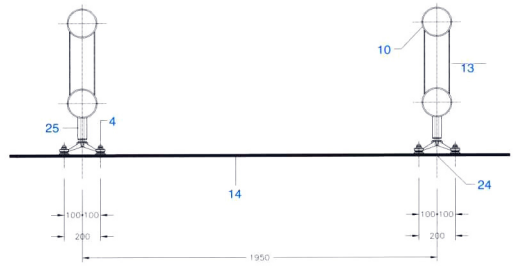
B3 STAIR ROOM SECTION



Night view of the lower exterior

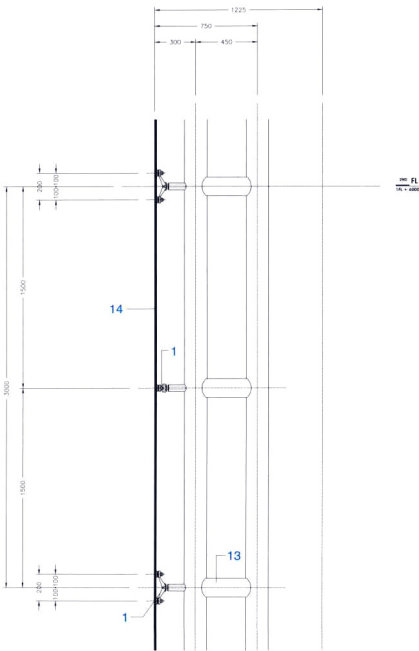


STL STRUCTURE MODULE

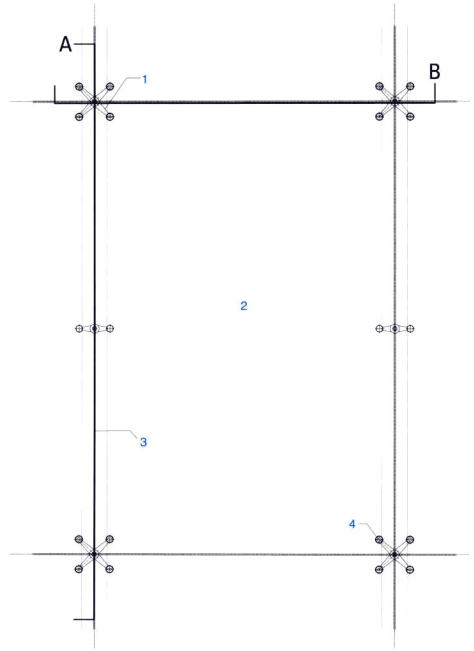


SECTION B

010



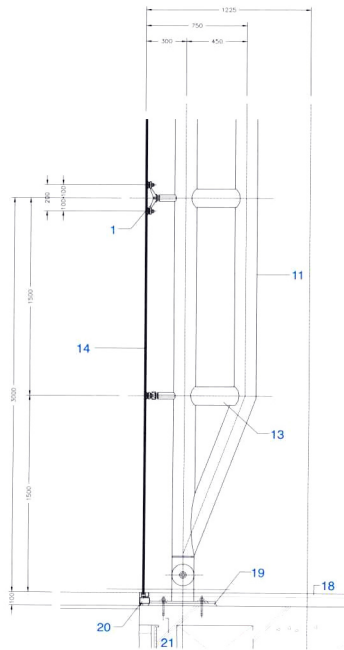
SECTION A



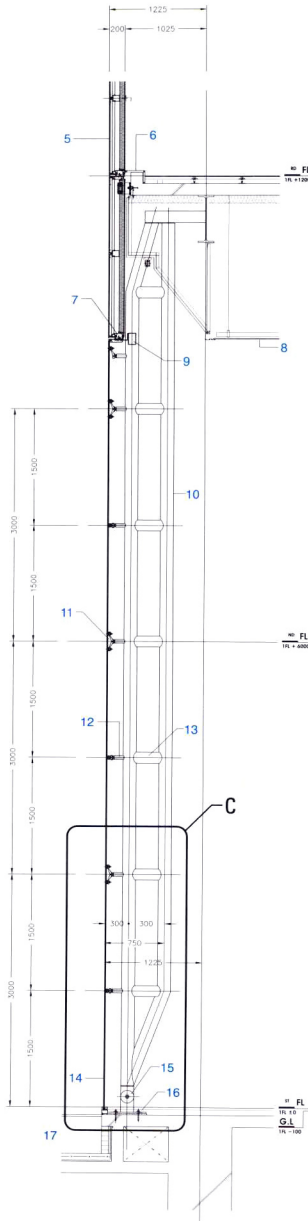
GLASS CURTAIN WALL PLAN



Night view of the upper exterior



DETAIL C



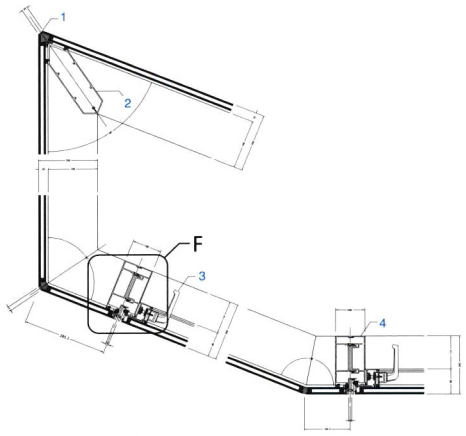
CURTAIN WALL PARTIAL SECTION

- 1 S'STL. SPIDER BRACKET
- 2 T12, TEMPERED GLASS ON ELEVATION
- 3 FIELD SEAL W/STRUCTURAL SILICONE SEALANT ON ELEVATION
- 4 POINT FIXING WALL SYSTEM BOLT
- 5 T3, ALUM. PANEL, ALCAN
- 6 T1.5, STAINLESS STL. PLATE
- 7 ANCHOR CLIP, ANGLE, 170X90XT8, 150L.G @650 O.C
- 8 CEILING FINISH
- 9 STL. TUBE, 150X100XT9, MOMENT CONNECTION
- 10 STL. TRUSS FOR POINT FIXING WALL 165.20IAXT10, PVDF FINISH
- 11 165.20IAXT10, STL. ROUND PIPE
- 12 50DIA. STL. COUPLER
- 13 139.80IAXT4.5 STL. ROUND PIPE
- 14 T12, TEMPERED GLASS
- 15 30DIA. GALV. STL. PIN
- 16 STL. BASE PLATE, 490X490XT15
- 17 2-STL. PLATE, T12
- 18 FLOOR FINISH
- 19 GROUTING MORTAR
- 20 BREAK FORMED STS FRAMING, CONT
- 21 M20 CHEMICAL ANCHOR 4NOS PER EACH CLIP
- 22 EXTRUDED ALUM. REINFORCEMENT TUBE 120X100XT3
- 23 T24 PAIR GLASS
- 24 FIELD SEAL W/STRUCTURAL SILICONE SEALANT
- 25 50DIA. STL. COUPLER

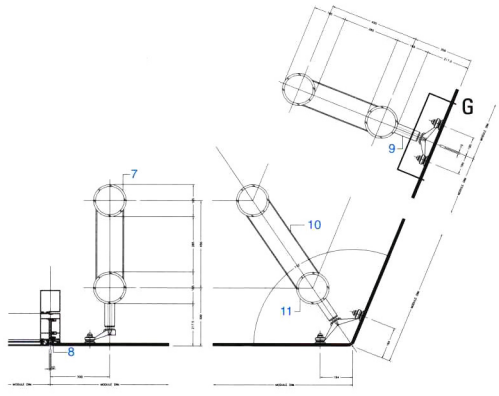


014

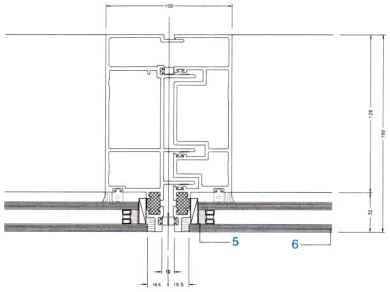
- 1 FIELD SEAL W/STRUCTURAL SILICONE SEALANT
- 2 EXTRUDED CORNER MULLION
- 3 THREE POINT MULTI LOCK HANDLE
- 4 STRUCTURE MULLION
- 5 GLASS SETTING BLOCK@QUARTER LOCATION
- 6 T24 PAIR GLASS
- 7 185.2DIAX11D STL. ROUND PIPE
- 8 FIELD SEAL W/SILICONE SEALANT
- 9 SODIA. STL. COUPLER
- 10 139.8DIAX14.5 STL. ROUND PIPE
- 11 POINT FIXING WALL SYSTEM BOLT
- 12 PRIMARY STL. ANCHOR CLIP, CHANNEL 200X22X18, 300LG
- 13 FIELD WELD AFTER FINAL ALIGNMENT



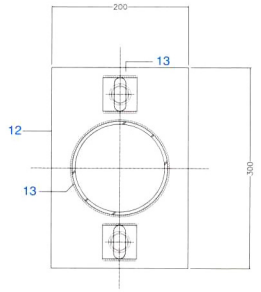
CORNER MULLION SECTION



GLASS HORIZONTAL SECTION



DETAIL F



SECTION G



The lobby on the 1st floor