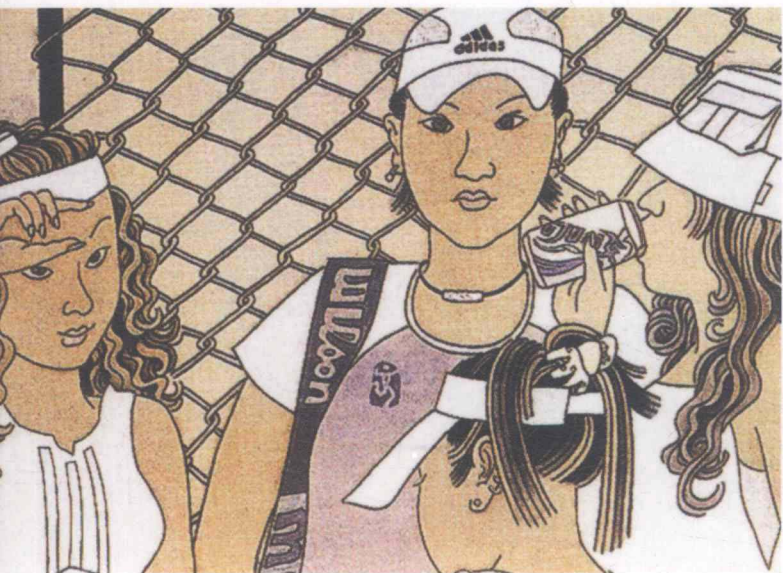


人物卷

「第二辑」

中国画名家 庄道静

画库



Collected Artworks of Famous Chinese Painters

四川出版集团 四川美术出版社



庄道静

江苏人

毕业于南京师范大学美术学院中国画系。并深造于中央美术学院中国画系研究生班
现为镇江中国画院专职画家

Zhuang Daojing

Zhuang Daojing, born in Jiangsu province, was graduated from the department of traditional Chinese painting of Nanjing Normal University. She used to learn arts in the postgraduate class in the department of traditional Chinese painting of China Central Academy of Fine Arts. She is now a professional painter of Zhenjiang Traditional Chinese Painting Institute.

艺术惟尚真而已，语言因真而设，形式为真而施。真即艺术，无真便无艺术。所谓艺术中的“真”不是具象的再现，是高度的概括与表现。古人谓之“外师造化”而“中得心源”，艺术的创作还需赋予时代的文化精神和生活内涵，如《韩熙载夜宴图》、《清明上河图》等艺术佳作，无不反映出那个时代的风采和审美。

庄
道
静



《美术观点》素来以“直面美术，阐述观点”为编辑主旨，在重视美术学术建设、艺术实践理解和媒体品牌构建的同时，也注重对艺术家在艺术创作过程中的理性思考以及其作品所传达的观点的研究与传播，形成了作者、编者与读者三者之间的良好互动关系，在中国美术界产生了积极影响。

《中国画名家画库》系列丛书的出版，旨在弘扬中华民族优秀文化，展现当代中国画界具有学术探索精神的老中青艺术家的艺术成就，并对他们的学术观点和艺术成果按画科（人物、山水、花鸟）分辑，个案成册，以便广大艺术家、读者之间学习交流、研究借鉴。

编 者
2006 年 8 月

Art Viewpoint takes "Direct dialogue between artists and audience" as its guiding editorial principle. The journal emphasizes simultaneous development of the study of fine arts, theory and practice in art, and the quality of multimedia. It also emphasizes research and explication of the creative process of artists and the meaning of what they want to express in their work. The aim of the journal is to improve the mutual understanding and relationship among authors, editors, and readers. It has had a major impact on the art world in China.

The publication of the book series, *Collected Artworks of Famous Chinese Painters*, showcases the excellence of Chinese culture and exhibits the achievements of various generations of contemporary Chinese painters. As a research reference, the series examines the work and perspectives of each artist according to different genres of painting to foster communication and understanding between artists and their audience.

Editor
August ,2006

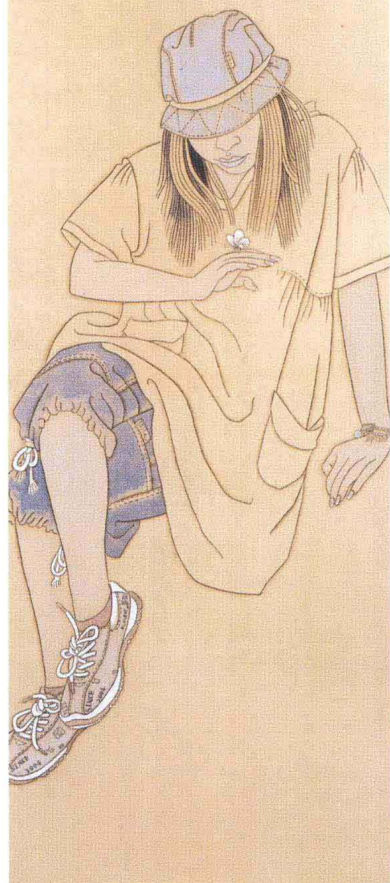


莊道靜畫



寐 绢本设色 180cm × 40cm 2004





凝 绢本设色 180cm × 50cm 2004







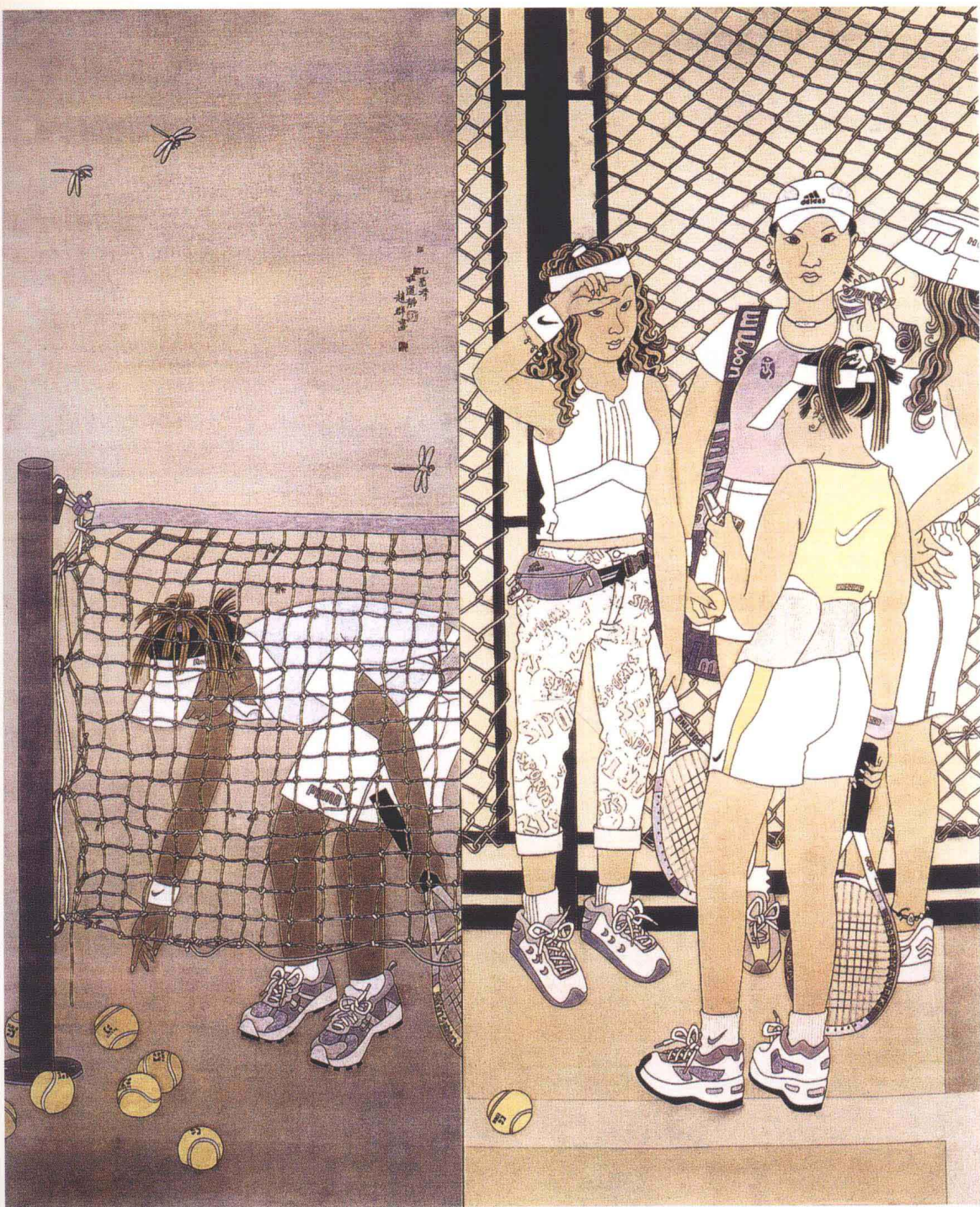


累 绢本设色 140cm × 140cm 2005





指 绢本设色 180cm × 50cm 2005

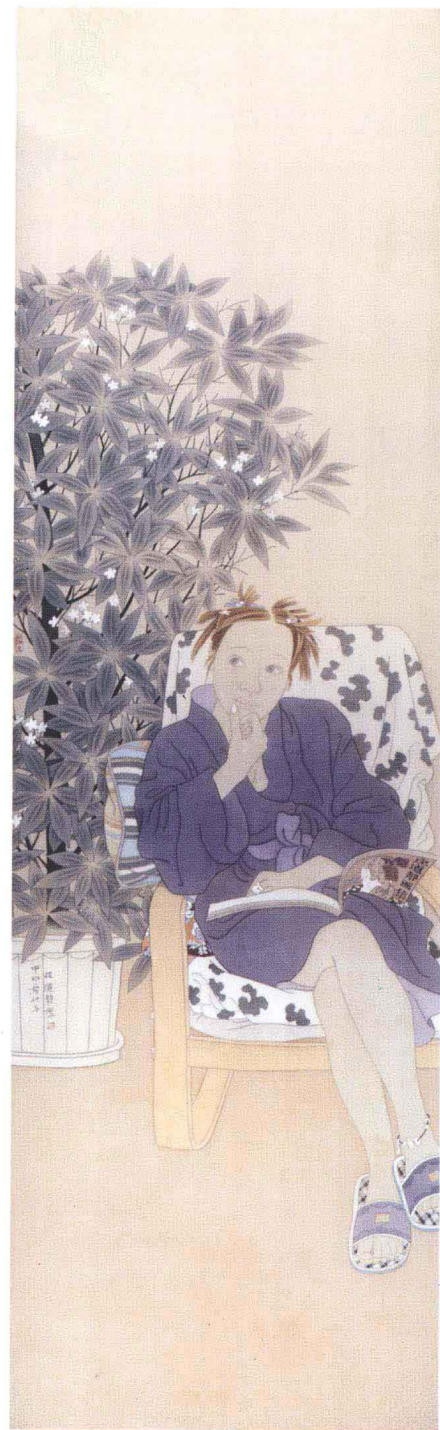




清 秋 绢本设色 260cm × 80cm 2002



福娃 绢本设色 180cm × 90cm 2006



工女士·印象 绢本设色 180cm × 60cm 2004