

2009

CHINA



Interior Design Annual

中国室内设计年鉴

1

2009 China Interior Design Annual

2009中国室内设计年鉴(1)

《中国室内设计年鉴》编委会

酒 店		
Hotel	珞珈山国际酒店	004
	欧瑞锦江大酒店	010
	华都酒店	016
	瑞亚·臻品酒店（梅园路店）	022
	太子城假日酒店	028
	太和紫金大酒店	034
	丽思·卡尔顿酒店	040
	锦江之星系列	046
	在水一方大酒店扩建工程	078
	中茵皇冠假日酒店	084
	金陵太湖湾大酒店	088
	金海华丽嘉酒店	094
售楼处		
Sale Pavilion	花园城销售中心	098
	龙湖睿城销售中心	104
	奥林匹克花园冠军城	110
	秋实e 景售楼处	114
	锦园销售中心	120
	发现之旅售楼处	124
	万科金澳国际展示中心	128
	中航城	132
	保利·麓谷林语销售中心	136
	中海-国际社区销售中心	142
中国式 会所		
Club	高氏院落	150
	华元和庄	156
	紫金汇	162
	梦天湖商务会馆	170
	浙江大酒店行政会所	176
	炎黄艺术馆子园	182
	静水山庄	186
	国泉茶社	190
	廿一会所	194
	书香世家	198
	瘦西湖唐郡	202
	首座会所	208
	沿河人家	212

娱乐
休闲

Entertainment Leisure

218	Infusion lunge
222	静SPA
226	SOKO美容院
230	天京会所
234	E·G造型沙龙
240	SIN酒吧
248	柏丽雅女子会所
252	国中温泉
256	若可生活时尚概念馆
260	Yesbar Club
264	斗猫
268	东京秀客-意美姬造型
274	华侨豪生SPA会所
280	荷欢印巴风情餐吧
284	王春美容院CFC摩登馆
290	新锦绣国际娱乐会所
294	丽歌量贩KTV
298	普拉那啤酒屋

老建筑
改造

Renovation of old building

302	新世汇酒店
308	完美生活
312	贝斯酒吧
318	诺富特酒店
322	线·魅力
326	中森名菜
330	福马桃花坞
336	半木明舍家具展厅
342	小海发廊
346	草流行中药养生馆
350	瑞亚·臻品酒店(金桥路店)
356	才茂街厂区改建项目

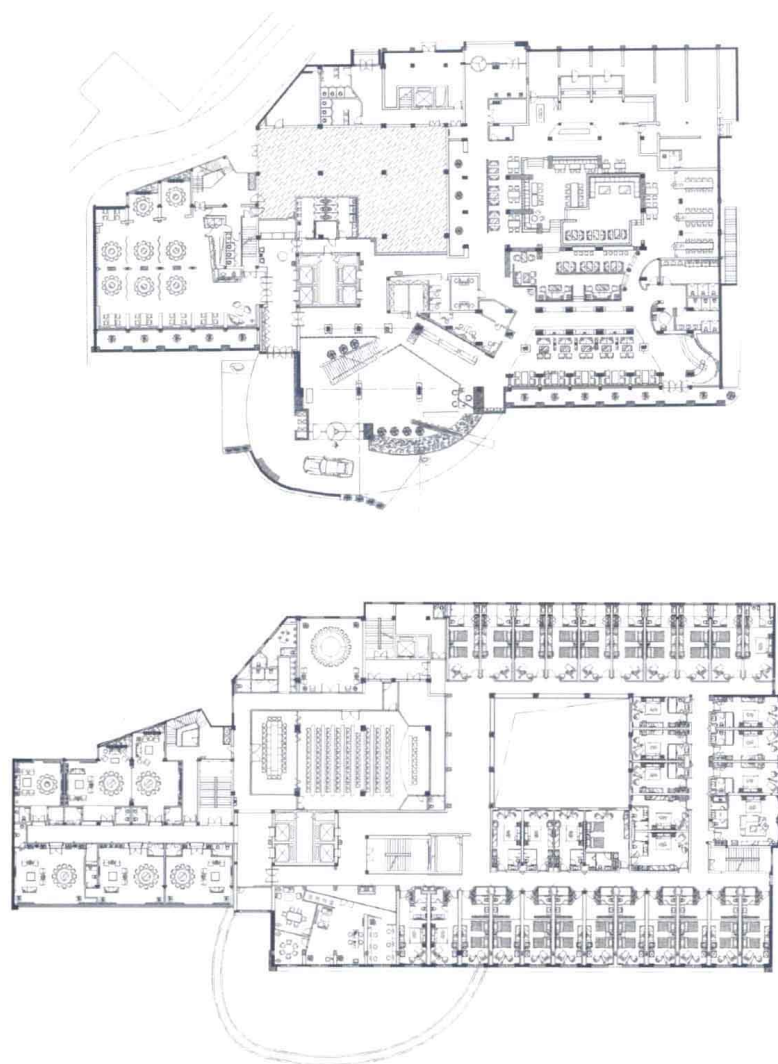
CONTENTS

珞珈山国际酒店

LOGOSUN Hotel

设计单位:深圳市假日东方室内设计有限公司 / 设计:洪忠轩 / 面积:10000 m² / 主要材料:石材、LED灯、玻璃
坐落地点:武汉 / 完工时间:2008年10月 / 摄影:陈中

Design Unit:Shenzhen Holiday Oriental Interior Design Co., Ltd. / Design:Hong Zhongxuan / Area:10000 m² / Main Materials:stone、LED、glass / Location:Wuhan / Finish Time:Oct,2008 / Photography:Chen zhong



珞珈山国际酒店是纯当代概念的商务酒店,具有极简约现代特征。该酒店属于旧宾馆改造项目,位于武汉市武昌大学区。从建筑外观改造、酒店高度、通风采光等,设计师打破常规,进行全方位、多层次的构思设计,使酒店整体风格呈现出典雅融合现代时尚于一体,形成酒店独特的东方意韵和人文气质,创造五星品质的超现代人文气质的精品酒店。

珞珈山国际酒店首创全环保型酒店和生态型酒店,应用复合板材和人造木等高环保型再造材料,避免产生污染、放射和异味。大量使用高效节能灯具——LED灯,一方面有效节约了能源,推进照明技术的发展,另一方面为客户节省了不少建造成本和运营维护成本。两个具有自然采光区域的中庭,既丰富了空间的层次感,又创造了人文的自然生态环境。简约的线面结合射线型艺术灯光,不仅让有限的空间得到了视觉上的延伸,也营造了酒店不同时段的不同表情,让客人感受到一种动态的简约美。

虽然整体采用了现代简约风格,但细节上的处理绝不马虎。中庭水池的情侣雕塑、走廊的“读书”系列不锈钢艺术品、电梯厅的LED到站指示灯柱,均为洪忠轩的原创设计,充满了人性化的关怀,以及其独特的文化品位与深厚内涵。

缘于独特的酒店形象和生活方式,作为环保型酒店,该酒店成功吸引了一批新客户群,并且成功吸引海外投资,酒店的全球影响力正在与日俱增。

As a business hotel of pure modern conception, this design is characterized by the extreme simplicity and modernity. It has been designed from all aspects of its work including visual modification, high density, ventilation and day lighting etc. in order to create the first super-modern five-star exquisite hotel in China.

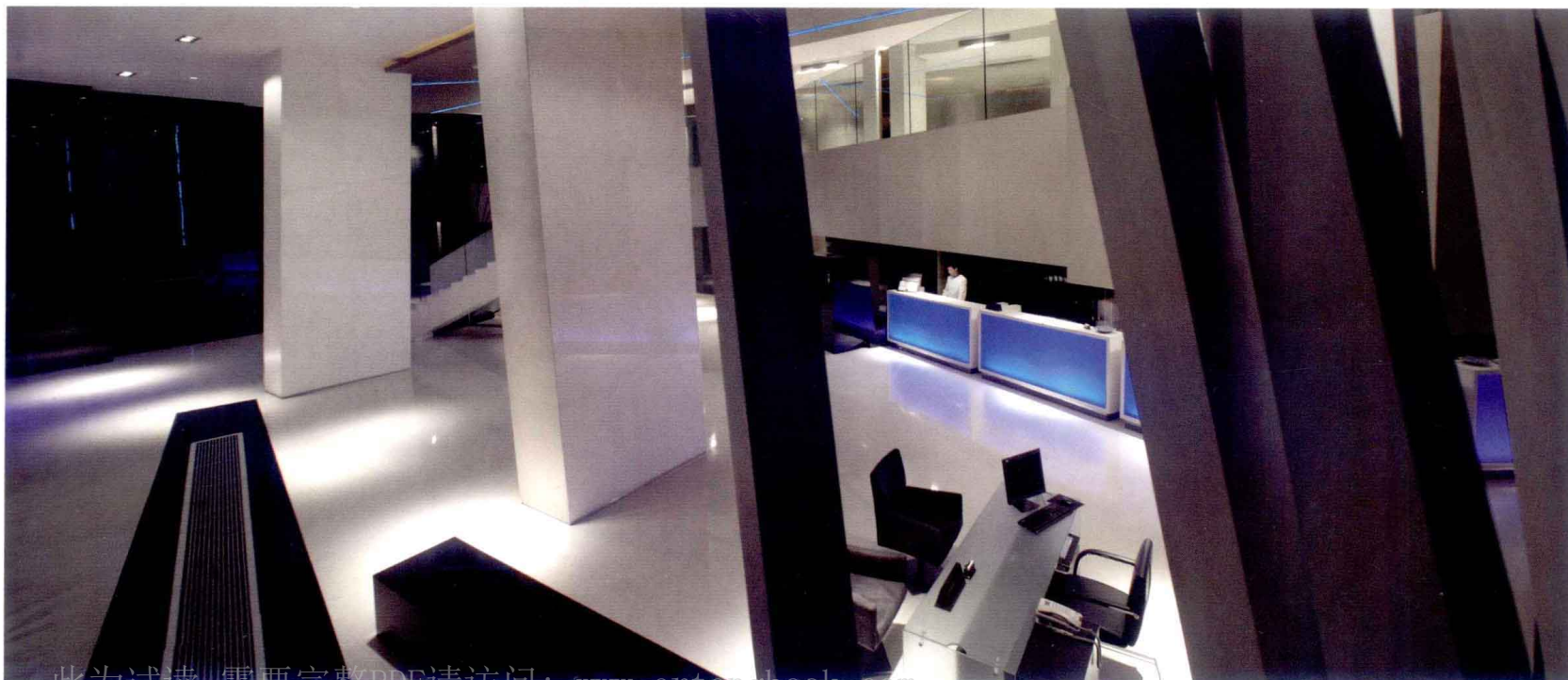
It is the completely environmental friendly and ecological hotel with the application of the very environmental protection type recycling materials such as composite boards and imitation woods to avoid the pollution, radiation and odors. The energy-saving LED lamps are used to save the construction, operation and maintenance costs for the customer. The atrium has not only enriched the level senses of the space, but also created a human and cultural natural ecological environment. The simple lines and surfaces in combination with the radial-style artistic light have visually extended the limited space, and have endowed the guests with a beauty of active simplicity.

简约的线面结合射线型艺术灯光,让有限的空间得到了视觉上的延伸。

The simple and concise lines and faces are combined with X-ray type artistic light so that the limited space has achieved a visual extension.

自然采光区域的中庭在LED灯的配合下时尚、独特。

The atrium in the natural day-lighting area looks fashionable and special in combination with LED lamps.





精致的细部尽显品位与内涵。

The delicate details have fully revealed the taste and meaning.

黑白纵横交织。

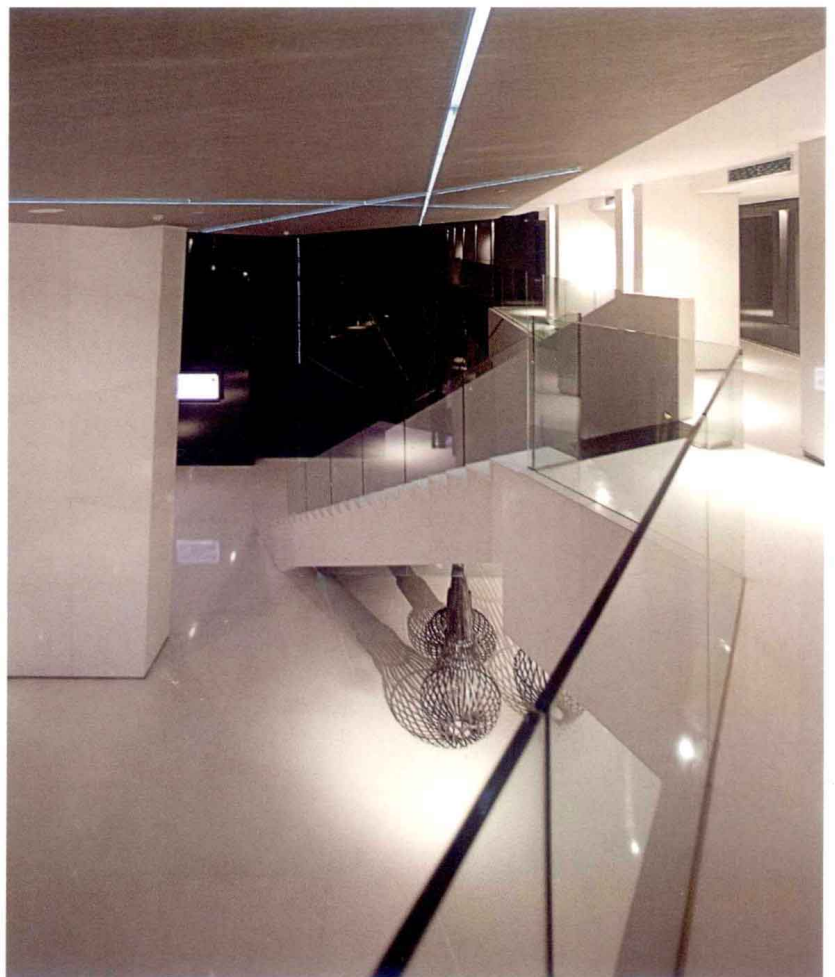
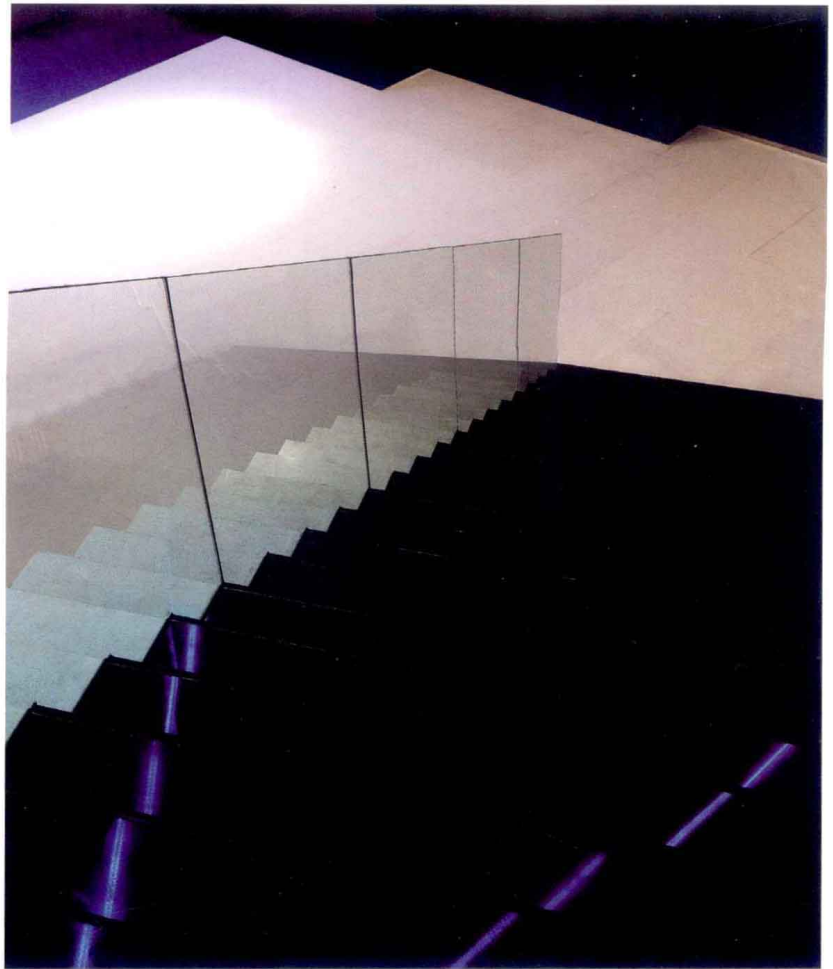
Black and white is crisscrossed vertically and horizontally.

艺术灯投射到楼梯上。

The artistic light is projected to the staircase.

色彩单纯、造型别致的入口阶梯。

The entrance staircase in simple color and unique model.









被红色包围的就餐区。

Dining area surrounded by red.

卷叶状的顶面造型新颖。

The coiled-leaf like top has a novel model.

简单舒适的客房。

The simple and comfortable guest room.

卫生间干湿区分，简单、纯粹。

The dry and wet areas are separated in the washroom, simple and pure.

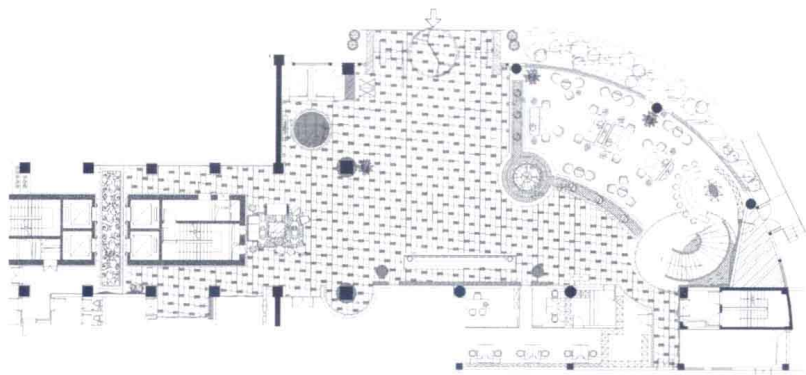


欧瑞锦江大酒店

Jinjiang Oriental Hotel

设计单位:YAC杨邦胜酒店设计顾问公司 / 设计:杨邦胜 / 面积:42000 m² / 主要材料:大理石、安利格木、桃花芯、钛咖啡板、水琉璃、艺术马赛克、艺术玻璃、墙纸、乳胶漆 / 坐落地点:重庆 / 工程造价:1.2亿元 / 完工时间:2008年12月 / 摄影:文宗博

Design Unit:YAC BANGSHENG YANG HOTEL DESIGN CONSULTING Co. / Design:Bangsheng Yang / Area:42000 m² / Main Materials:marble、mahogany、colored glaze、mosaic Art、art glass、wallpaper、emulsion paint / Location:Chongqing / Project Cost: RMB 120 000 000 / Finish Time:Dec,2008 / Photography:Wen Zongbo



提取“花”为造型元素，抽象表达豪华富贵。

“Flower” is taken as the model element to abstractly express the luxury, wealth and rank.

珠联璧合的完美诠释。

A perfect interpretation.

光影迷离的储酒柜。

The wine cabinet in vague light and shadow.

重庆欧瑞锦江大酒店位于中国内地的保税区重庆市渝北区与江北区交汇处，地理位置得天独厚，环境优美，交通便利，由锦江国际管理公司管理的五星级城市商务酒店。设计以“花开富贵”的吉祥寓意灵感来源，提取“花”为造型元素，贯穿整体内部空间，运用色彩的隐喻，抽象地表达出该项目豪华富贵，深沉大气的独特风格。整体空间以暖金色调和深色调相互搭配为主，金色调的雍容华贵，深色调的稳重霸气，加上花的妩媚柔美，现代质感精致的简练线条，时尚雅致的家具搭配及陈设。在华丽的光影下，缔造出一种新鲜创新的低调奢华风格。

Chongqing Ourui Jinjiang Hotel is ideally located in the only bonded area in mainland China, the intersection of Yubei Zone and Jiangbei Zone in Chongqing City. It has excellent surroundings and it is easy of access. It is a five-star urban business hotel managed by Jinjiang International Management Company.

Chongqing Ourui Jinjiang Hotel applies the auspicious symbolism of ‘Fortune Comes with Blossom’, which is the source of the design inspiration. ‘Flower’ has been picked up as the design element, and is used throughout the whole internal space. Using color as the metaphor, the project has been abstractly expressed as luxury and rich, with the characteristic of profundity and taste. The overall space is mainly coordinated by warm golden and dark colors. The prestige and nobility of golden colors, the calmness and pride of dark colors, the charm and softness of flowers, together with delicate and simplified modern lines, fashionable and elegant furniture, decorations and displays all establish a low profile, fresh yet innovative kind of luxury style under the magnificent lighting and shadow.





马赛克地面恰如繁星点缀。

The mosaic floor looks like the clusters of dotted stars.

花开富贵的寓意呈现在大理石地面上。

The meaning that fortune comes with the blossoming flowers is present on the marble floor.

极具日式餐饮风格的VIP房。

VIP room of extreme Japanese catering style.

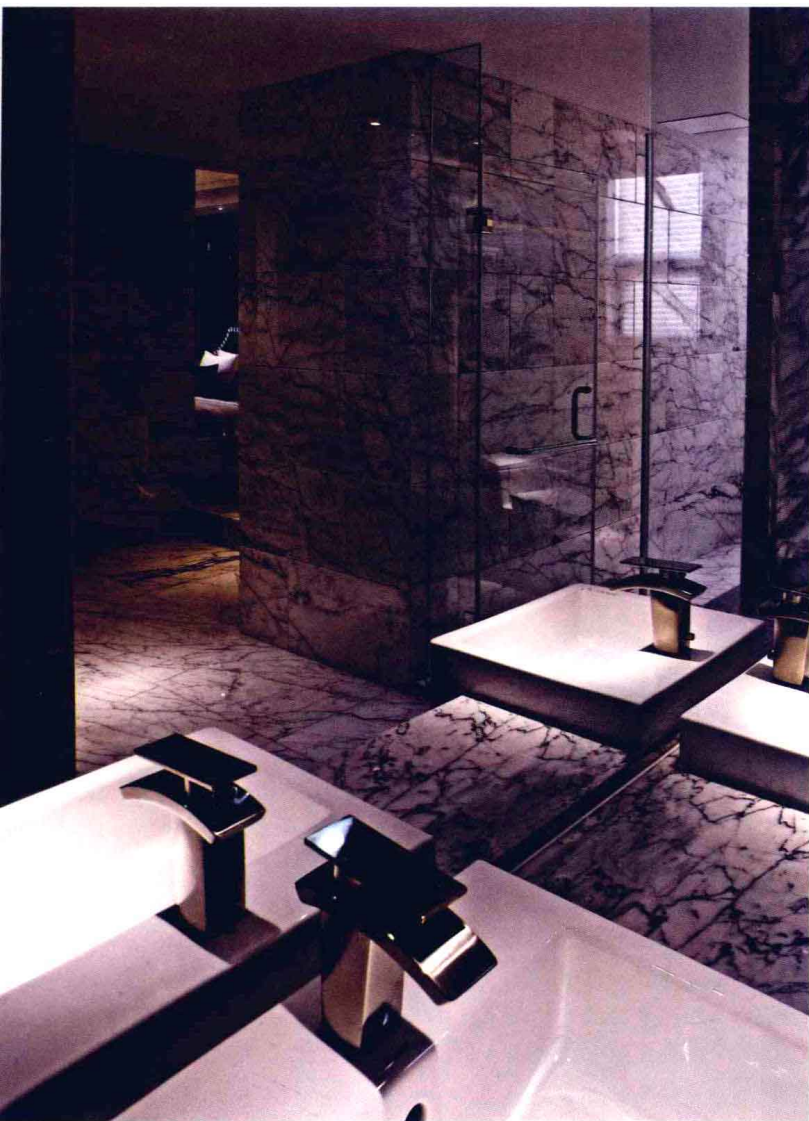
现代质感精致的简练线条，搭配时尚雅致的家具陈设。

The delicate simple and concise lines in modern texture go with the fashionable and elegant furniture.









行政酒廊端庄优雅。

Executive lounge is decent and elegant.

宝蓝色花纹修饰的地毯流露的是一种低调的奢华。

The carpet in the sapphire blue pattern delivers a low-profiled luxury.

镜面和大理石的搭配令人视觉交错。

The arrangement of mirror with the marble generates a staggered effect in vision.

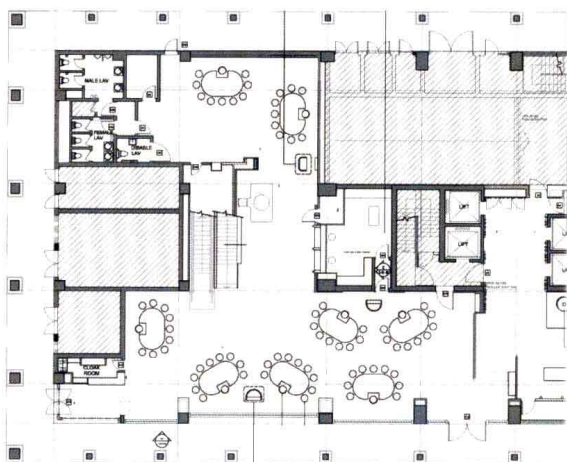
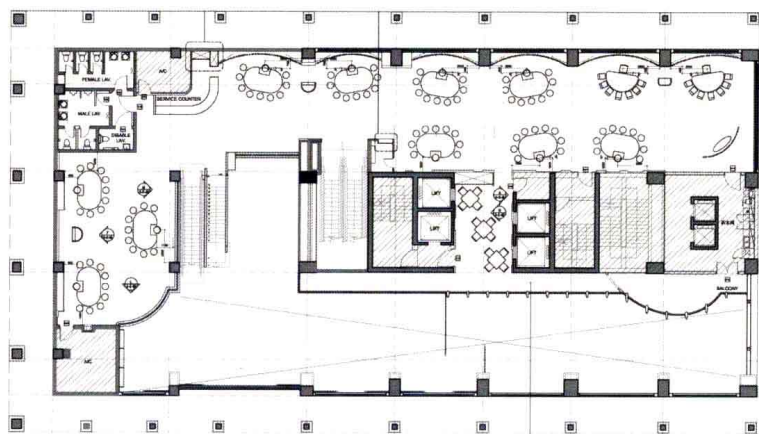
总统套房雍容华贵。

Presidential suite is natural, graceful and luxurious.



设计单位:香港德坚设计公司 / 设计:陈德坚、刘永冬 / 面积:215000 m² / 主要材料:石材、玻璃 / 坐落地点:澳门 / 完工时间:2008年10月 / 摄影:陈德坚

Design Unit:Kinney chan and associates / Design:Kinney chan、Liu Yongdong / Area:215000 m² / Main Materials:stone、glass / Location:Macao / Finish Time:Oct,2008 / Photography:Kinney chan



新口岸的华都酒店本属传统类型，这次设计师将华都酒店重新包装，以拉斯维加斯 Boutique Hotel概念设计，变身成澳门第一间设计新颖、富有时代感的精品酒店。Boutique Hotel希望给住客营造一份家的感觉，因此在装潢上会较温暖和谐，亦会别致地在房内分隔出客厅等各部分，有些甚至设有厨房。华都的百多间客房中，有一半是设计很有性格的主题套房。

重新设计的华都酒店创意十足，突显一个“潮”字。外观，采用LED显示标志，两颗“红、绿”的圆点标记设于外墙，其高亮度、对比度、图像质量简约而醒目。大堂，椭圆金属天花悬挂在电梯大堂的中间，接待柜台后面，特别设计的紫色洗墙灯，神秘而暗哑。酒店入口处一层，设有雪茄吧和红葡萄酒吧，周围铺着冷峻的大理石。空间流线明晰，淡黄、玫瑰红牵引着视觉。流线型天花装饰及地毯图案，既美观又有引路作用。内部黝黑皮革家具和低调的照明，现代而优雅，木制的桌面焕发出热情和黄金的氛围。玻璃墙板空间中心安装电线，射灯照在玻璃墙板上，营造出墙壁戏剧性的效果，同时增添了现场钢琴表演的气氛。赌场空间，顶部圆形天花板模式和地毯形状相互呼应，每张桌旁玻璃吸顶灯，与魅力时尚的家具组合，无不彰显富贵与奢华。

而餐厅分为西餐和中餐，设计风格平静和简单，走廊在昏暗灯光中品味舒适和轻松的气氛。黑色的大理石地面反射在镜面，勾勒出形态优美的曲线。顶部利用大面积的镜子，扩展了空间的广阔。硕大的玻璃屏风，营造虚实气氛。黑白的花纹石柱，体现餐厅的异样艺术与文化。靠近酒店入口的“Perle” Bar，在设计中强调了酒吧周围柜台顶部和墙壁，外观增加了抛光度，入口处装饰闪烁和运动银色珠子，与暗淡的灯光相结合，伴着音乐，让疲惫的身心得到放松。

客房、酒店共有162间，其中两间是顶楼总统套房，四种主题房间：Glamour、Pure、Comfort及Hip，分布于16~18楼，其中最惊喜是银黑幽暗酒红地毯的Glamour，面积约500m²，名副其实的“格”型设计，在顶部上方“套”入一个相架，大有画龙点睛效果。至于白色为主调的Pure、大自然色彩的Comfort及波浪形衣柜的Hip，都让客人耳目一新，印象难忘。

As Macau has fast become the largest and the most popular destination leisure, entertainment and gaming marketing worldwide, Waldo Hotel has decided to reposition the brand and re-renovate itself with a more attractive image to ultimately be competitive in the marketplace.

Located in the heart of Macau, Waldo Hotel is a provocative hotel offers the perfect retreat while also providing gambling services. Waldo undertakes the upgrade and re-bands the property to a Hip and trendy hotel. The overall goal was to brighten up both the guestrooms and the public spaces, including the lobby and restaurant. The interior design theme of Waldo Hotel is to create a comfortable, exciting and unique atmosphere.

The hotel facade features an impressive LED logo display, its high brightness and contrast ratio, and the stunning image quality, clearing presenting the trendy image of Waldo.

The presentation of main lobby is in keeping with the hip and chic image. A very nice modern and trendy color schemes such as noble and burgundy have been applied into the area. To bring out the hip ambiance, an oval metal ceiling feature has been hung in the middle of the lift lobby. Behind the reception counter, there is a silver wire feature wall with purple wash light. All furniture is in simple form yet natural and cozy.

The exciting and glamorous theme is carried throughout the interior design of the hotel casino. The interior design was similarly fashionable, with hip circular patterns on the ceiling and patterns on the carpet. The column glassy ceiling lamps, as well as the suede upholstery furniture successfully warm up the atmosphere and create a customer friendly environment.

There are four type of themed guest room inside the hotel: Pure, Comfort, Hip and Glamorous. The decoration of “Pure” is simple, white and minimal but still inviting and comfortable. The room “Comfort” however is decorated in natural warm tone for a cozy and elegant look. Soft touch such as the carpet imparts a vivid modern flavor. The Hip room is completely chic and hip with unique pieces of modern furniture. Vivacious use of material and fabric in the interiors make it a sigh