

陝
西

出土
青銅器



BRONZES
FROM
NORTHERN SHAANXI

..... 2

編著 陝西省考古研究院
主編 曹璋 四川出版集團

巴蜀書社



主編 曹瑋

陝北出土青銅器

編著 陝西省考古研究院

第二卷

四川出版集團
巴蜀書社
2009·成都



Edited by CAO WEI

**BRONZES
FROM NORTHERN
SHAANXI**

Written by Shaanxi Institute of Archaeology Research

VOLUME II

**BASHU PUBLISHING HOUSE
SICHUAN PUBLISHING GROUP**

2009 · CHENGDU



凡 例

一、本書收錄的範圍是延安市與榆林市所轄各區縣博物館、文管會辦公室和文物保護研究所收藏的青銅器，以及陝西歷史博物館和陝西省考古研究院收藏的、陝北出土的青銅器。

二、器物的編排以器類為先，順序為容器、工具、兵器、車馬器、佩飾、其他。同器類則以時代先後為序；時代相同的則以地點由北向南、由東到西排列。

三、器物後邊的編號，為收藏地的藏品總號。漢字表示收藏地。其中陝西歷史博物館縮寫為陝歷博，陝西省考古研究院縮寫為考古，寶塔區縮寫為寶塔，榆陽區縮寫為榆陽，其他地名均為縣名。收藏地後邊的數字為收藏館所的藏品總編號，如雁首壺（寶塔350），為延安市寶塔區文管所藏第350器物。

四、器物描述的長度單位用cm，重量單位用g。

五、每件器物的描述按器名、器物收藏總號、時代、出土時間地點、現收藏地、器物的尺寸、重量、器物的形制與紋飾的簡單描述、銘文字數等逐項進行說明。

六、每件器物都有圖片、線圖、說明文字三部分進行表述。



七、器物年代的表示如下：

殷墟一期歸為商代中期；殷墟二期至四期為商代晚期；西周分為早中晚期三期：武、成、康、昭為前期；穆、恭、懿、孝、夷為中期；厲、宣、幽為西周晚期；春秋分為早中晚三期；戰國分為早中晚三期。

西漢時期分為早中晚三期，武帝前期以前為前期，武帝後期至昭帝為西漢中期，宣帝以後為西漢後期。





Notes on the Use of the Book

1. This book has included bronzes collected by museums, institutes, and cultural relic administrations in the regions of Yan'an and Yulin, as well as bronzes excavated in North Shaanxi and collected by the Shaanxi History Museum and the Shaanxi Institute of Archaeology.

2. The implements are arranged in the following order: vessels, tools, weapons, horse and chariot fittings, ornaments and others of unknown function. Within each category, the artifacts are arranged in chronological order and by location (from north to south, or east to west) if from the same period.

3. The implements are followed by their original collection numbers. The Chinese words indicate the location of the collection; for example, Goose-head *hu* (寶塔 350), is number 350 in the collection of Baota District, Yan'an. Shaanxi History Museum is abbreviated as SHM, Shaanxi Institute of Archaeology as Archaeology, Baota District as Baota and Yuyang District as Yuyang. Other names are names of counties.

4. The description of the implements uses cm for length and g for weight.

5. Each implement is described by: name, number in original collection, period, excavated time and location, current location, size, weight, and brief information about the shape and pattern and inscriptions.

6. Each implement is described with photographs, line drawings, and an



explanatory text.

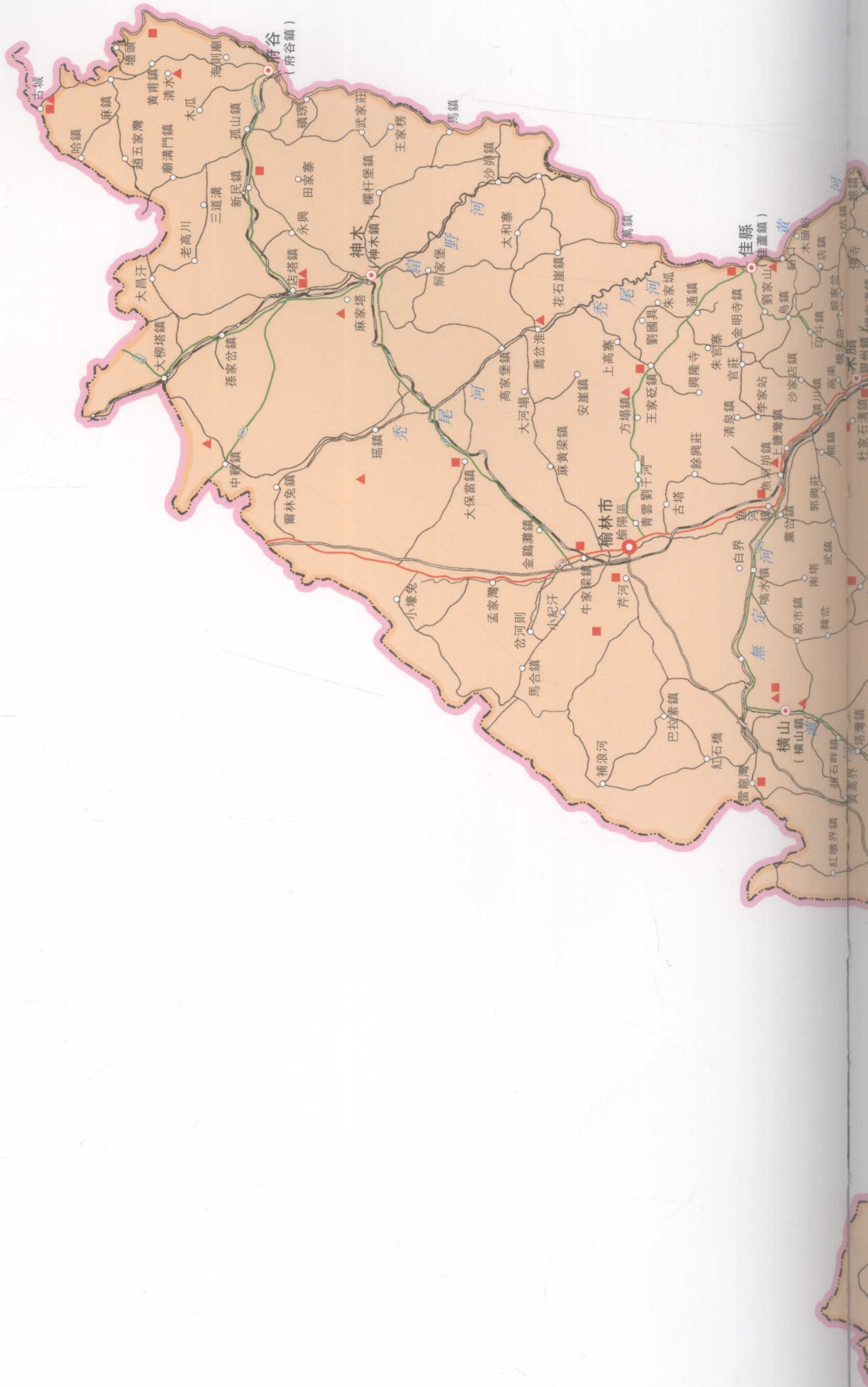
7. The archaeological periods of the implements are described as follows:

The first phase of the Yinxu period corresponds to the Middle Shang Dynasty; The second to the fourth phase of the Yinxu period corresponds to the Late Shang Dynasty; Western Zhou is divided into three periods: early, middle and late. Kings Wu, Cheng, Kang, and Zhao belong to the Early Western Zhou; Kings Mu, Gong, Yi, Xiao, and Yi belong to the Middle Western Zhou; Kings Li, Xuan, and You belong to the Late Western Zhou. The Spring and Autumn Period is divided into early, middle, and late, as is the Warring States Period.

The Western Han Period is divided into three periods: early, middle, and late. The period preceding Emperor Wu is the Early Western Han, from Emperor Wu to Emperor Zhao is the Middle Western Han, and after Emperor Xuan is the Late Western Han.



陝北青銅器出土地點分佈圖



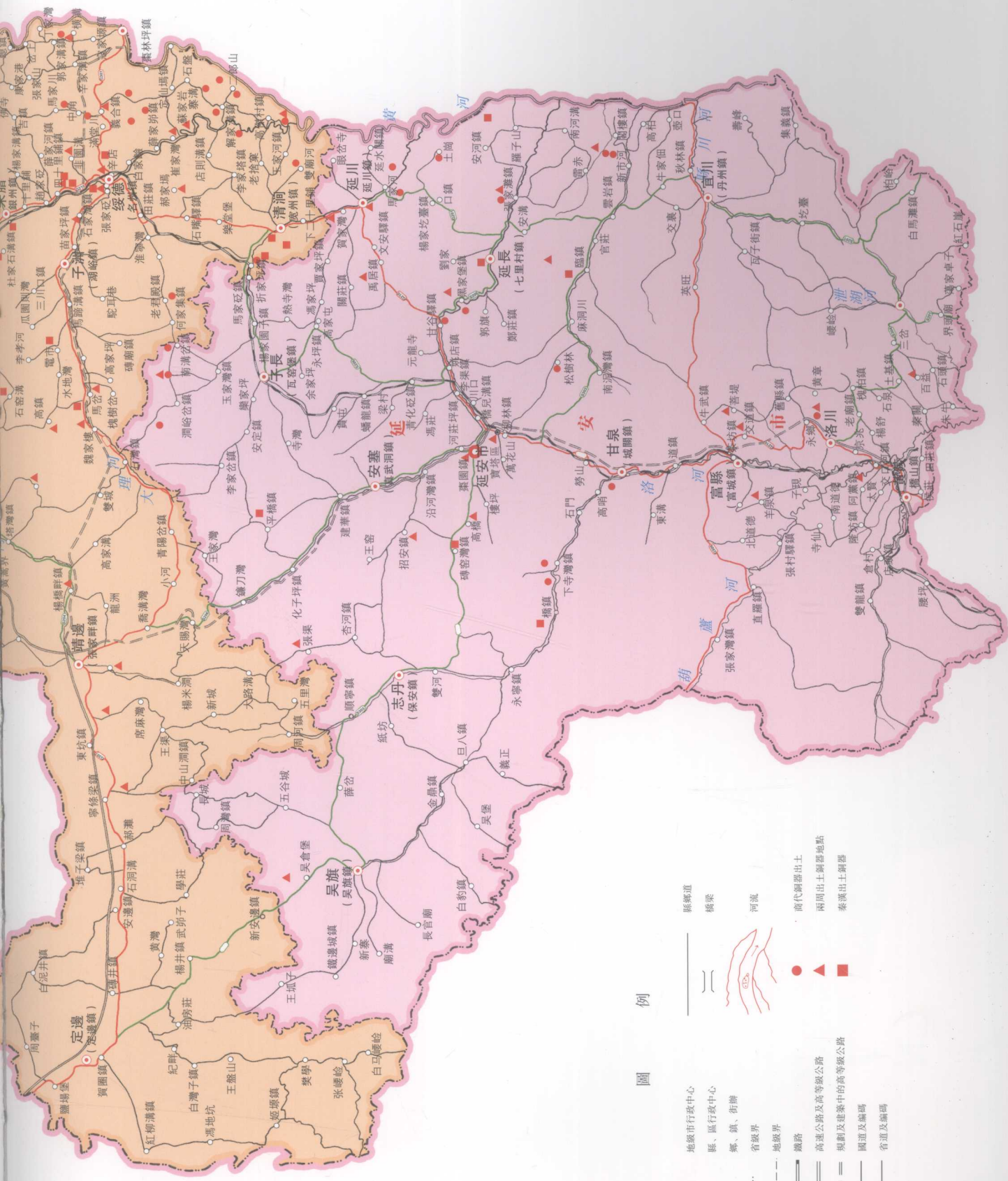
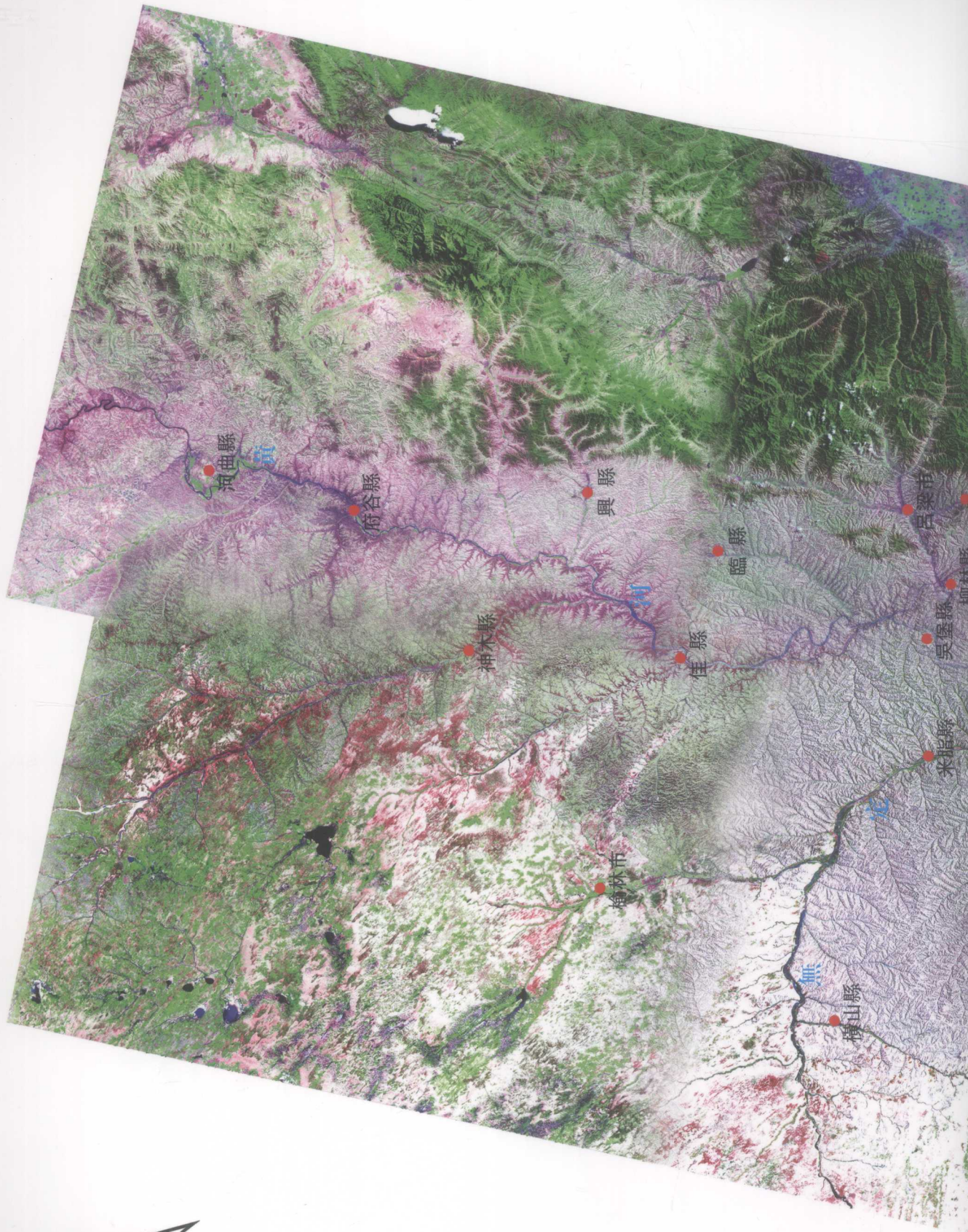
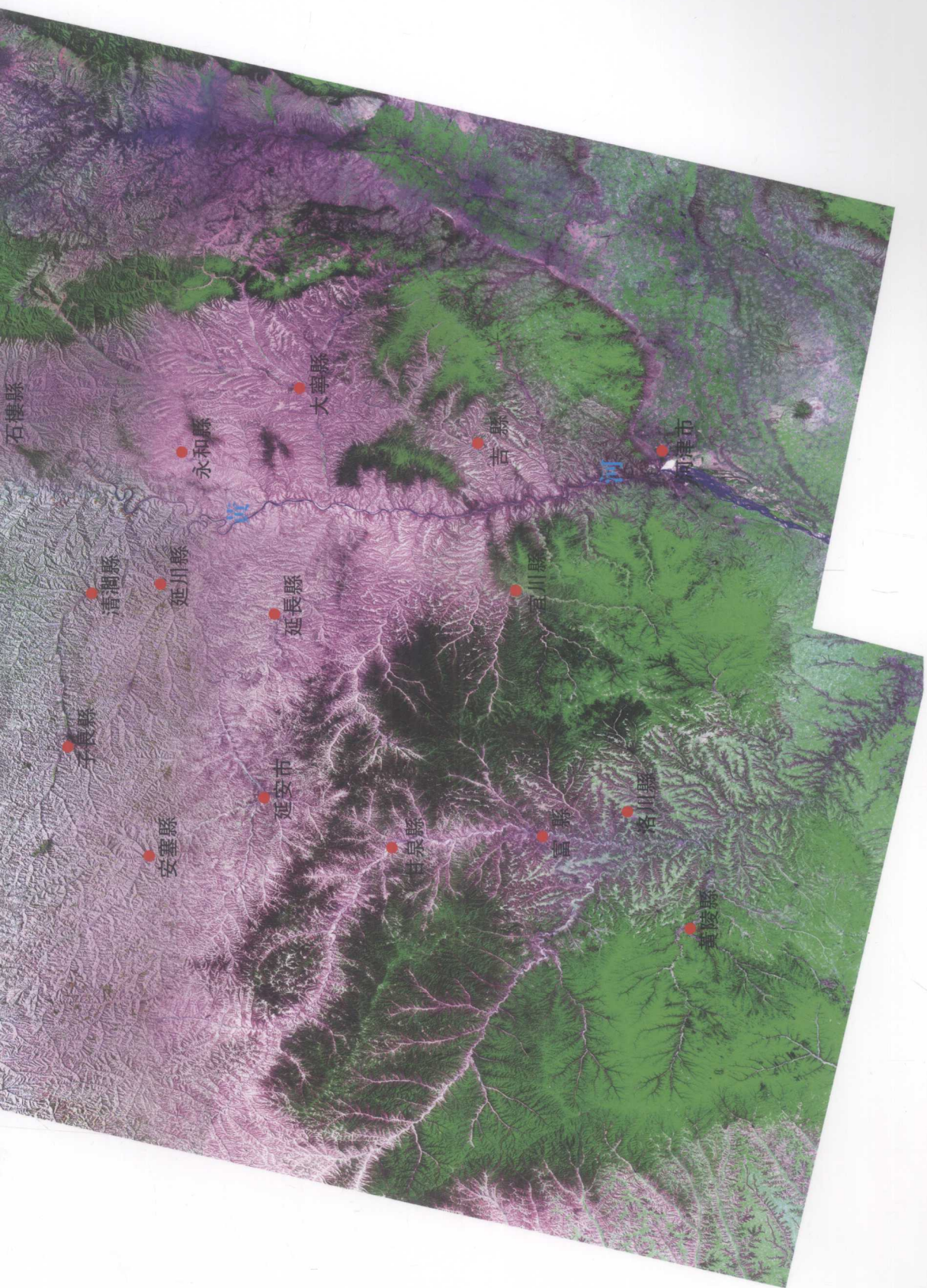


圖 例

- 地級市行政中心
- 縣、區行政中心
- 鄉、鎮、街辦
- 省級界
- - - 地級界
- 鐵路
- ==== 高速公路及高等級公路
- ==== 規劃及建築中的高等級公路
- 國道及編碼
- 省道及編碼
- 縣鄉道
- 橋梁
- 河流
- 前代銅器出土
- ▲ 兩周出土銅器地點
- 秦漢出土銅器

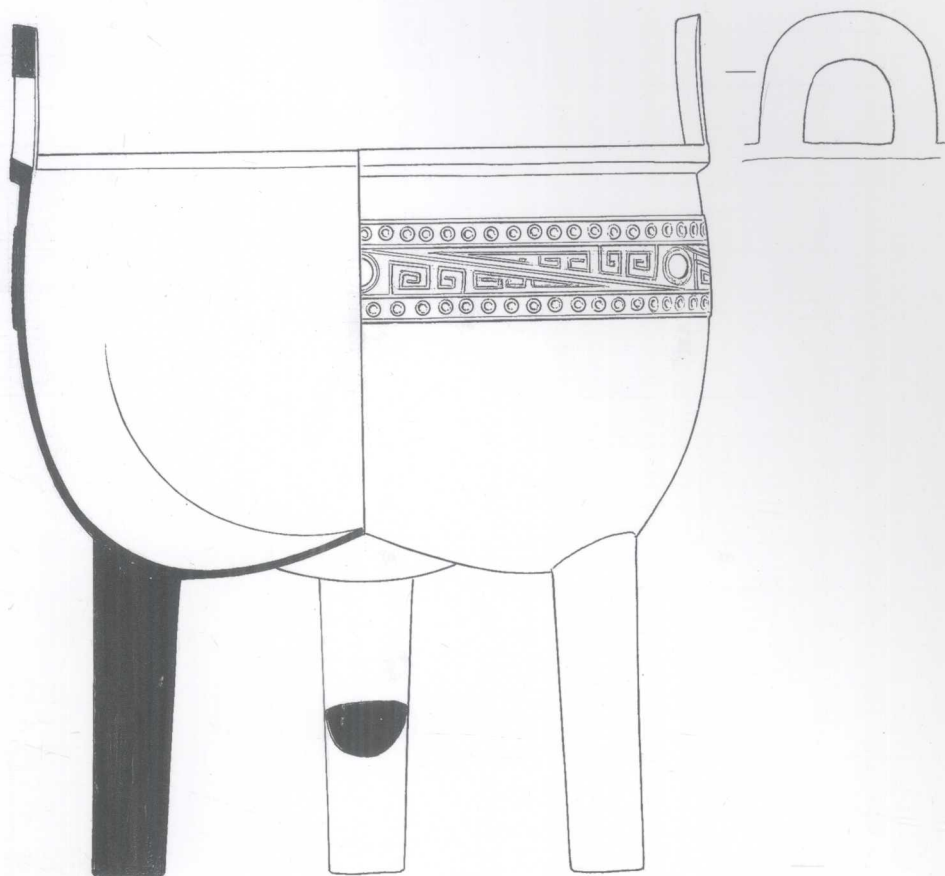






紋飾





0 1.7cm



外底

連珠雷紋鼎（綏德308）

商代中期

1977年出土於陝西省清澗縣解家溝鄉解家溝村

現藏於陝西省綏德縣博物館

通高19.3cm、口徑16.1cm、腹深7.9cm，重量1616g

方立耳，平沿外折，分襠，三柱足。頸部飾一周上下以連珠紋為界隔的三角形目雷紋。

Ding

Middle Shang Period

Discovered in 1977 at Xiejiagoucun, Xiejiagou, Qingjian County, Shaanxi Province

Suide County Museum, Shaanxi Province

Height 19.3 cm, diam. at mouth 16.1 cm, depth of belly 7.9 cm, weight 1616 g

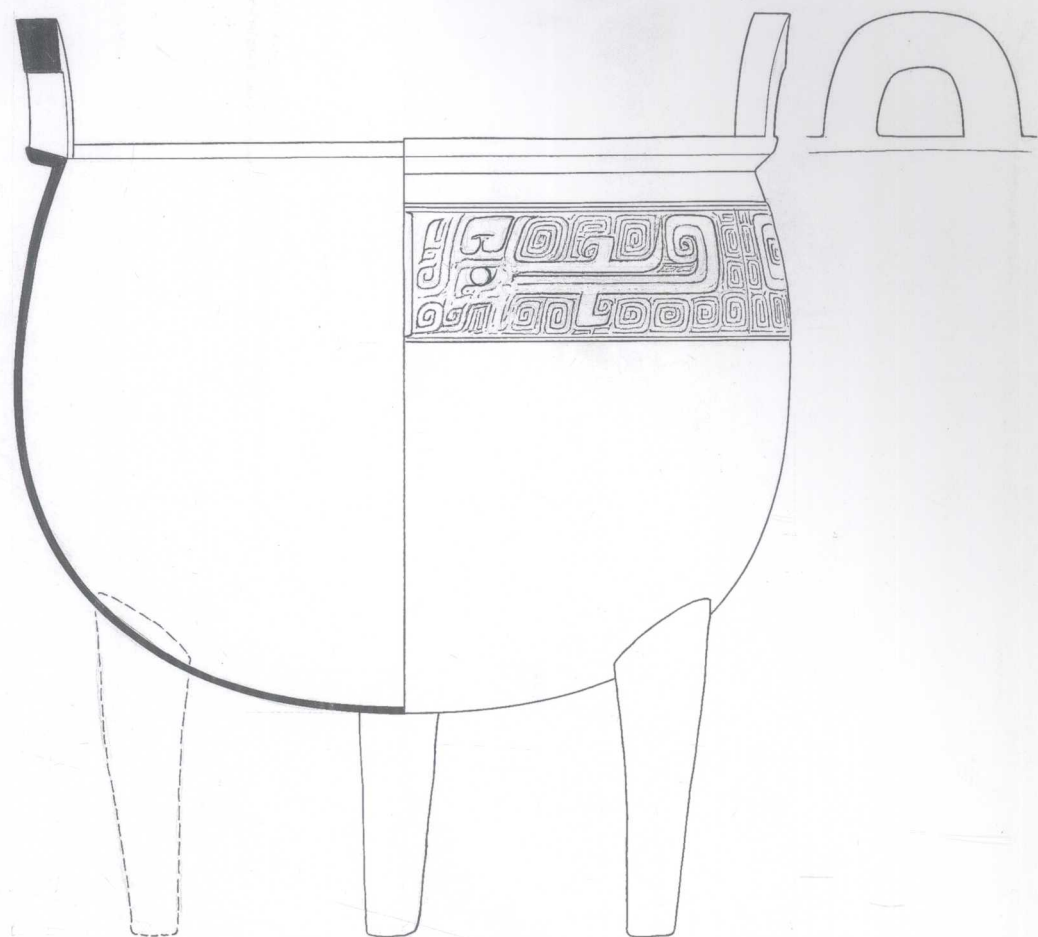
This lobed *ding* is supported by three cylindrical legs. Two inverted U-shaped handles stand on a rim below which is decorated by slanted thunder motifs bordered with small circles.





銘文：





天鼎 (陝歷博七四81)

商代中期

1965年出土於陝西省綏德縣義合鎮塢頭村

現藏於陝西歷史博物館

通高24.2cm、口徑19.8cm、腹深13.5cm，重量2810g

方立耳，平沿外折，深腹微鼓，三柱足。頸部飾一周雲紋襯底的獸面紋。腹內壁上鑄銘一字：天。

Ding

Middle Shang Period

Discovered in 1965 at Yantoucun, Yihe, Suide County, Shaanxi Province

Shaanxi History Museum, Xi'an

Height 24.2 cm, diam. at mouth 19.8 cm, depth of belly 13.5 cm, weight 2810 g

The deep round belly of the *ding* hanging down toward the bottom sits on three slender legs. On the everted lip are two inverted U-shaped handles. Animal face motifs encircle the body of the *ding* just below the rim. An inscription reading "tian" is found on the interior of the vessel.





外底

