

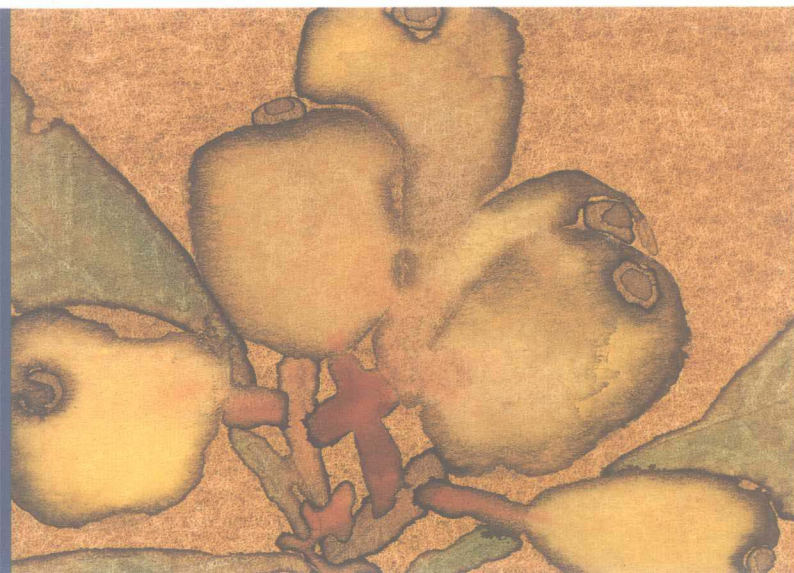
花鸟卷

「第二辑」

中国画名家 林蓝

# 画库

Collected Artworks of Famous Chinese Painters



四川出版集团 四川美术出版社



## 林蓝

1971 年生于广东潮州

1993 年毕业于广州美术学院国画系

1996 年毕业于中央工艺美术学院并获硕士学位

2004 年毕业于清华大学美术学院并获美术学博士学位

现为广州美术学院设计学院装饰艺术设计系主任、副教授

Lin Lan

Lin Lan, born in Chaozhou city in Guangdong Province in 1971, was graduated from the department of traditional Chinese painting in Guangzhou Academy of Fine Arts in 1993. She obtained her master degree of Central Technologic Arts Academy in 1996 and obtained her doctor degree of arts of Tsinghua University in 2004. She is now a director and an associate professor of the department of the design of decorative arts of the design school of Guangzhou Academy of Fine Arts.

任何时代的先锋艺术必然是反映了时代精神的艺术，也只有具有这样基础的艺术才有可能最终成为所处时代最为典型的艺术。



《美术观点》素来以“直面美术，阐述观点”为编辑主旨，在重视美术学术建设、艺术实践理解和媒体品牌构建的同时，也注重对艺术家在艺术创作过程中的理性思考以及其作品所传达的观点的研究与传播，形成了作者、编者与读者三者之间的良好互动关系，在中国美术界产生了积极影响。

《中国画名家画库》系列丛书的出版，旨在弘扬中华民族优秀文化，展现当代中国画界具有学术探索精神的老中青艺术家的艺术成就，并对他们的学术观点和艺术成果按画科（人物、山水、花鸟）分辑，个案成册，以便广大艺术家、读者之间学习交流、研究借鉴。

编 者

2006年8月

*Art Viewpoint* takes iDirect dialogue between artists and audience as its guiding editorial principle. The journal emphasizes simultaneous development of the study of fine arts, theory and practice in art, and the quality of multimedia. It also emphasizes research and explication of the creative process of artists and the meaning of what they want to express in their work. The aim of the journal is to improve the mutual understanding and relationship among authors, editors, and readers. It has had a major impact on the art world in China.

The publication of the book series, *Collected Artworks of Famous Chinese Painters*, showcases the excellence of Chinese culture and exhibits the achievements of various generations of contemporary Chinese painters. As a research reference, the series examines the work and perspectives of each artist according to different genres of painting to foster communication and understanding between artists and their audience.

Editor

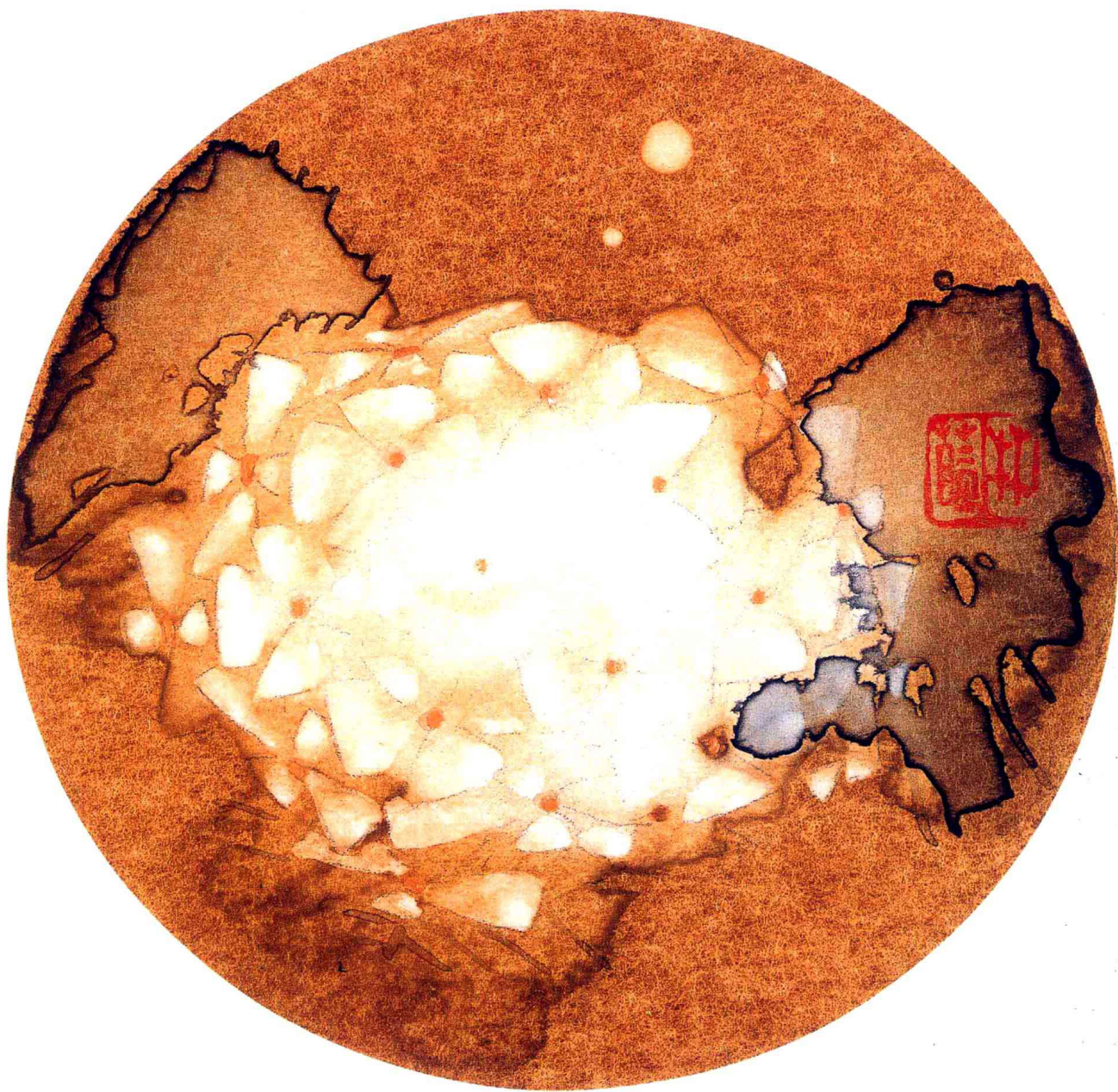
August, 2006





白百合(二) 金版设色 34cm x 27cm 2005









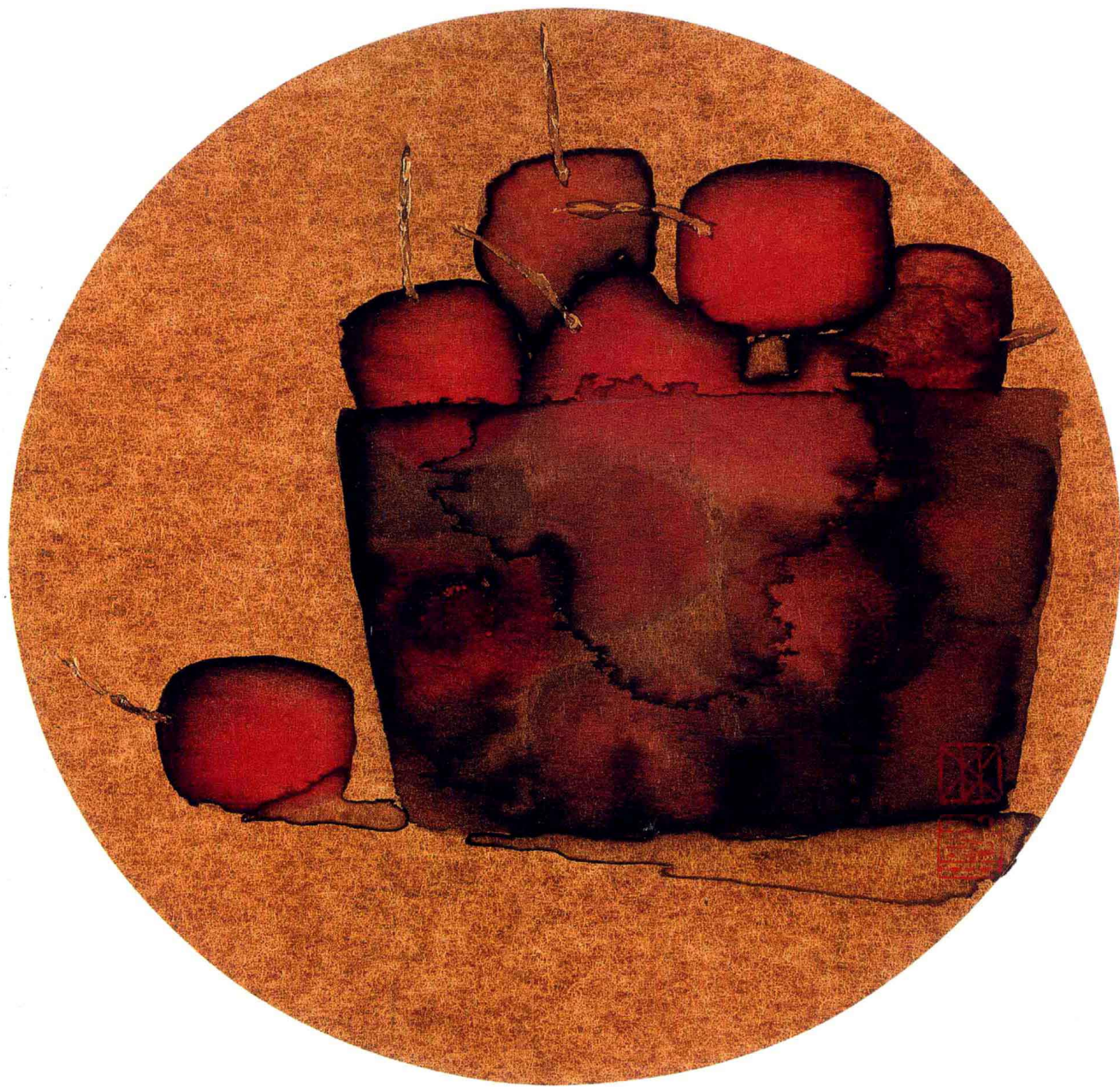
蛋花(一) 金版设色 24cm x 27cm 2005





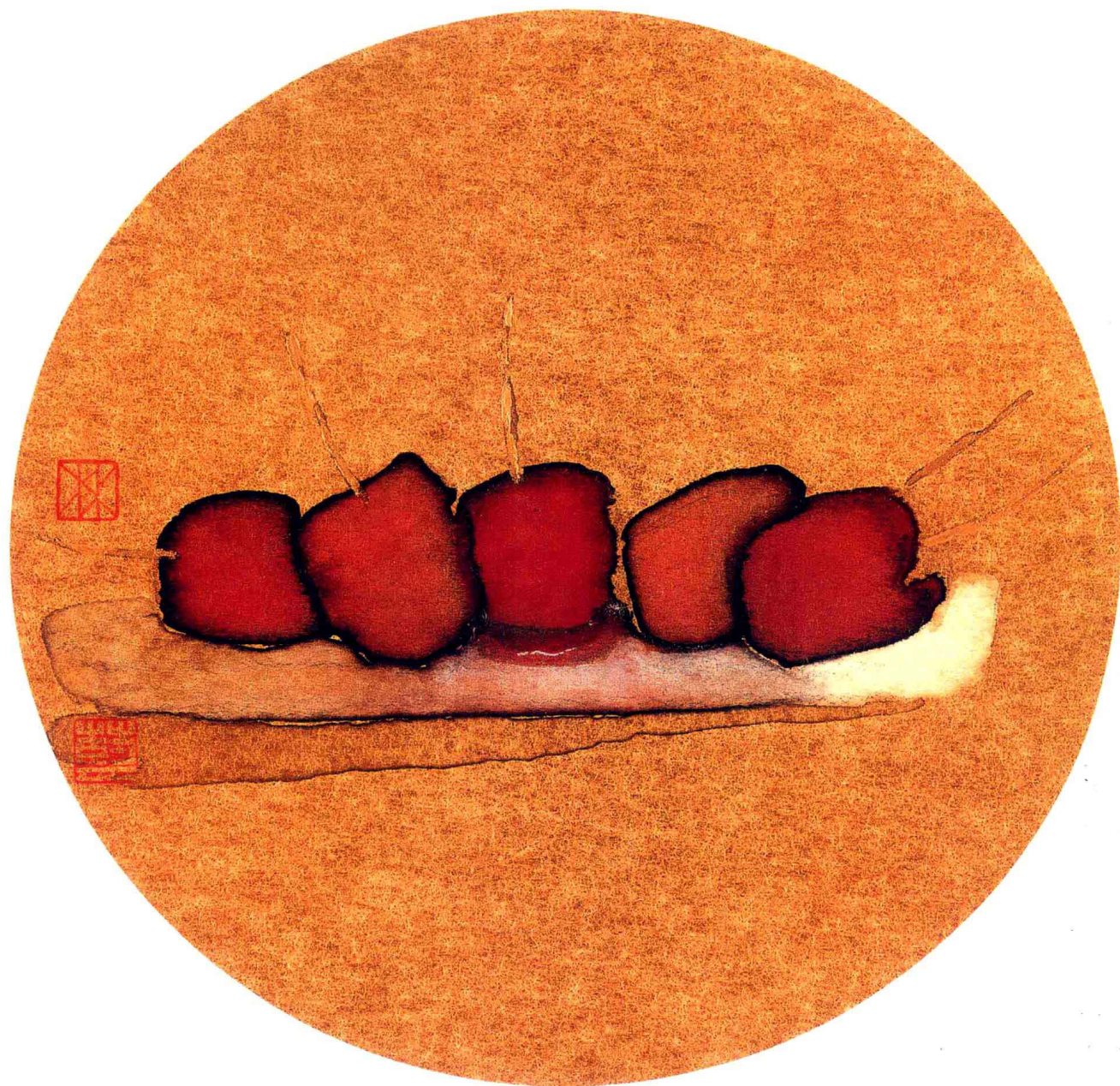
蛋花(二) 金版设色 24cm × 27cm 2005





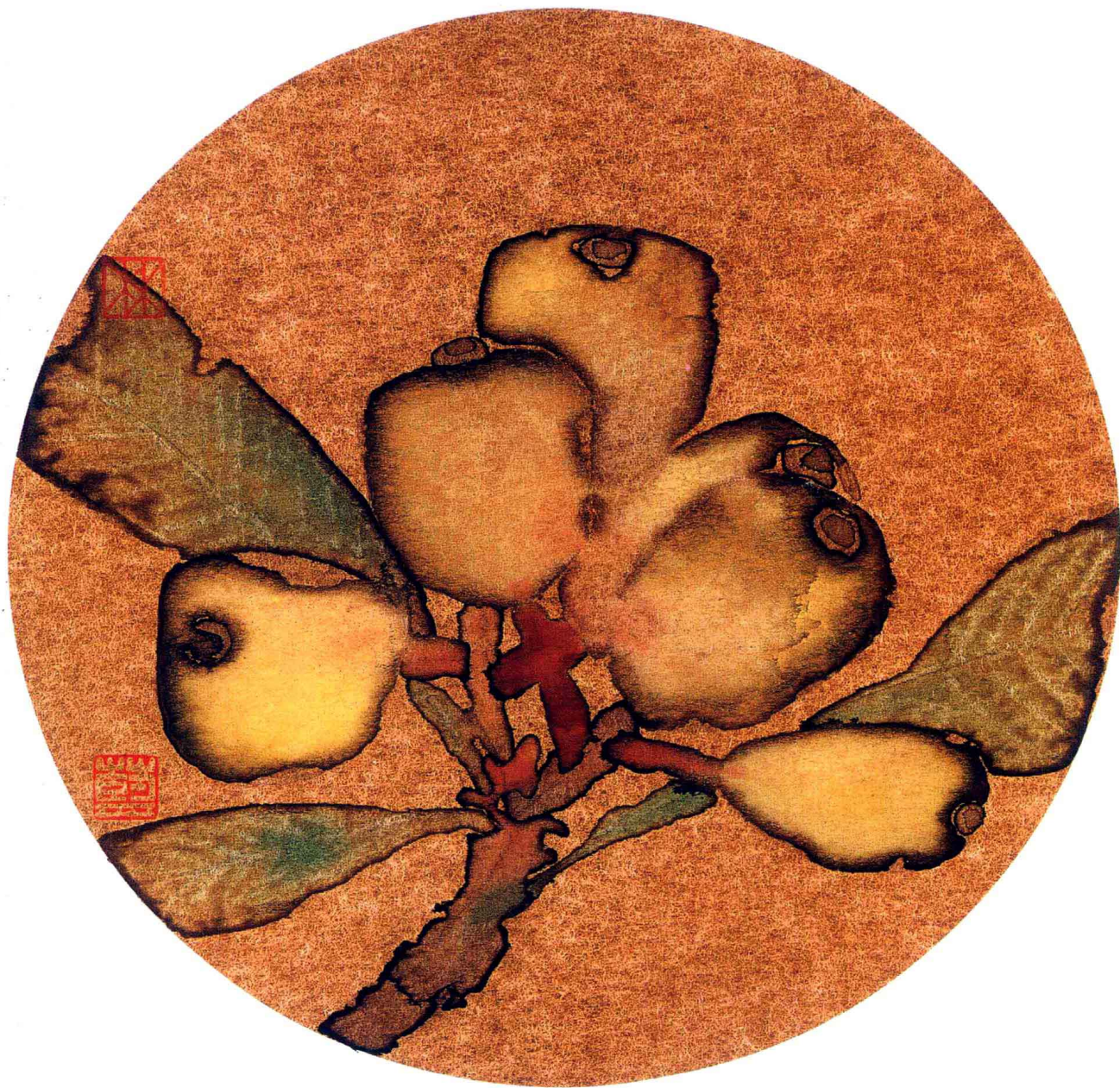
红果子(一) 金版设色 24cm × 27cm 2005





红果子(二) 金版设色 24cm × 27cm 2005





黄香(一) 金版设色 24cm x 27cm 2005



