

人物卷
「第一辑」

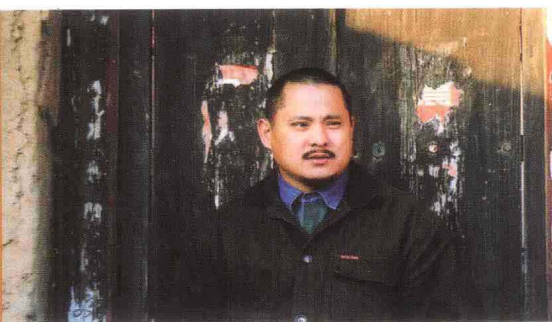
中国画名家 王晓辉

画库

Collected Artworks of Famous Chinese Painters



四川出版集团 四川美术出版社



王晓辉 [清晖]

1963 年生于河北省石家庄市

先后毕业于河北轻工业学校美术专业、中国美术学院中国画系

现执教于中央美术学院中国画学院

WANG Xiao-hui

WANG Xiao-hui, born in Shijiazhuang city in HeBei province in 1963, was graduated from the fine arts speciality in HeBei light industry school and the department of traditional Chinese painting in Chinese Academy of Fine Arts. He is now a professional painter of the school of traditional Chinese painting in Chinese Academy of Fine Arts.

对我来说，笔墨只标明我在传统立场中的某种位置，是我尽可肆意挥洒的某种精神依托。笔墨若让当代人在继起的关照中能不断领略到新的视觉美味，水墨的行为者就需要在深化造型的实践中找到与之相对应的笔墨玩法。

清晖



《美术观点》素来以“直面美术，阐述观点”为编辑主旨，在重视美术学术建设、艺术实践理解和媒体品牌构建的同时，也注重对艺术家在艺术创作过程中的理性思考以及其作品所传达的观点的研究与传播，形成了作者、编者与读者三者之间的良好互动关系，在中国美术界产生了积极影响。

《中国画名家画库》系列丛书的出版，旨在弘扬中华民族优秀文化，展现当代中国画界具有学术探索精神的老中青艺术家的艺术成就，并对他们的学术观点和艺术成果按画科（人物、山水、花鸟）分辑，个案成册，以便广大艺术家、读者之间学习交流、研究借鉴。

编 者

2006年3月

Art Viewpoint takes "Direct dialogue between artists and audience" as its guiding editorial principle. The journal emphasizes simultaneous development of the study of fine arts, theory and practice in art, and the quality of multimedia. It also emphasizes research and explication of the creative process of artists and the meaning of what they want to express in their work. The aim of the journal is to improve the mutual understanding and relationship among authors, editors, and readers. It has had a major impact on the art world in China.

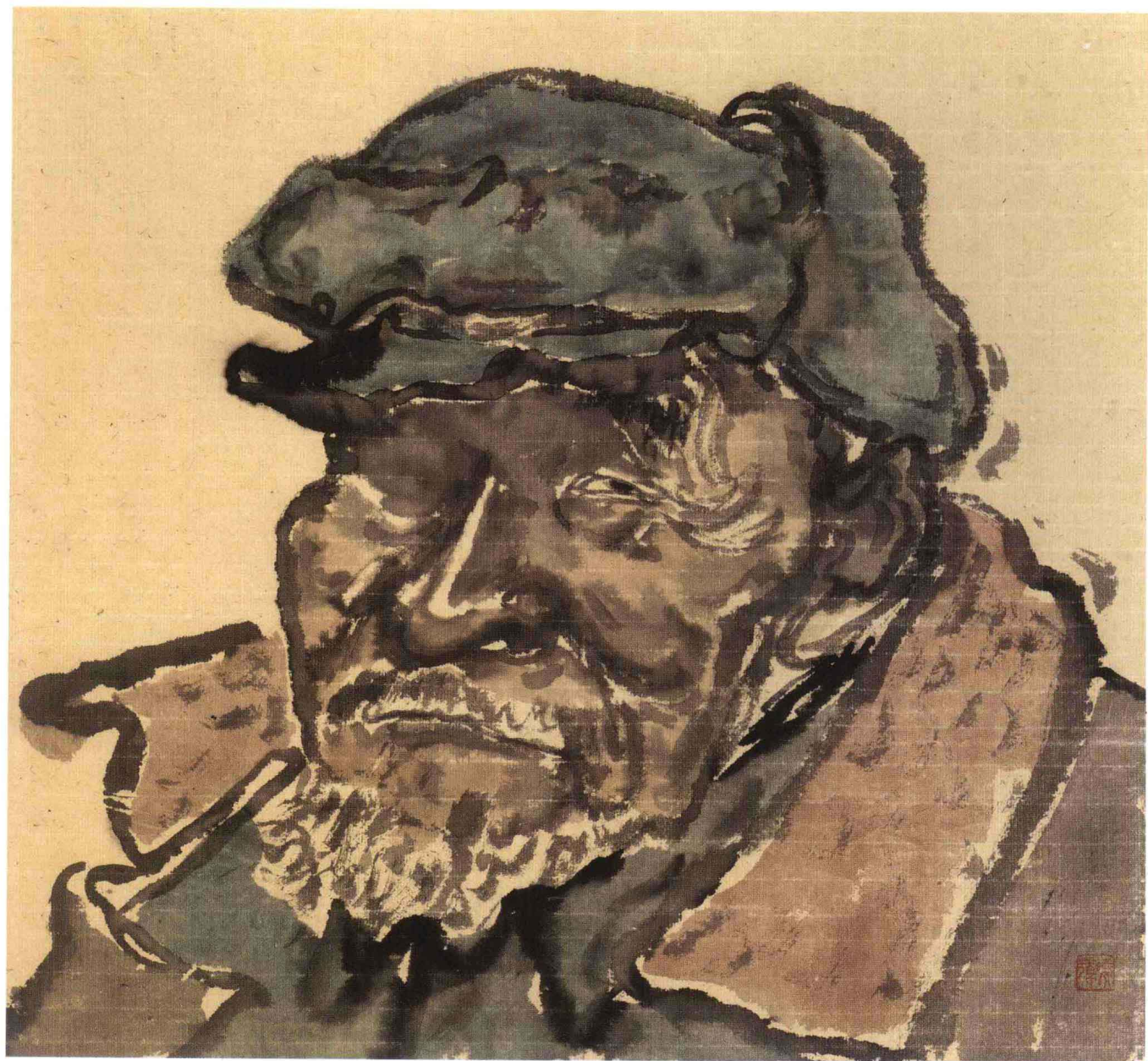
The publication of the book series, *Collected Artworks of Famous Chinese Painters*, showcases the excellence of Chinese culture and exhibits the achievements of various generations of contemporary Chinese painters. As a research reference, the series examines the work and perspectives of each artist according to different genres of painting to foster communication and understanding between artists and their audience.

Editor

March, 2006



人物系列之一 纸本设色 40cm × 40cm 2005





人物系列之三 纸本设色 40cm x 40cm 2005



人物系列之四 纸本设色 40cm × 40cm 2005



人物系列之五 纸本设色 40cm × 40cm 2005



人物系列之六 纸本设色 40cm × 40cm 2005



人物系列之七 纸本设色 40cm × 40cm 2005





人物系列之九 纸本设色 50cm x 40cm 2005



人物系列之十 纸本设色 50cm × 40cm 2005



人物系列之十一 纸本设色 50cm × 40cm 2005



人物系列之十二 纸本设色 50cm × 40cm 2005



人物系列之十三 纸本设色 40cm × 40cm 2005

