

ALCOHOL
JRBANSI
LUNN
ENVICTION

图书在版编目(CIP)数据

2009欧博设计/ 法国欧博建筑与城市规划设计公司编写. —北京:
中国建筑工业出版社, 2010.5

ISBN 978-7-112-12072-7

I. ①2··· II. ①法··· III. ①建筑设计—作品集—
中国 IV. ①TU206

中国版本图书馆CIP数据核字(2010)第077023号

责任编辑: 常燕

2009欧博设计

法国欧博建筑与城市规划设计公司 编写

*

中国建筑工业出版社出版、发行(北京西郊百万庄)

各地新华书店、建筑书店经销

深圳市国际彩印有限公司印刷

*

开本: 787×1092毫米 1/12 印张: 20½ 字数: 185千字

2010年6月第一版 2010年6月第一次印刷

定价: 218.00元

ISBN 978-7-112-12072-7

(19344)

版权所有 翻印必究

如有印装质量问题, 可寄本社退换

(邮政编码 100037)

2009 欧博设计

ARCHITECT

URBANISM

BUILDING

ENVIRONMENT

前言 PREFACE

2009年，AUBE（欧博设计）最具挑战、最富有设计成果和建筑技术进步最显著的一年。

AUBE（欧博设计）历经欧洲、法国十多年的设计实践，以及在中国十一年坚持“国际理念，职业实践、地域文化”的设计精神全情投入，完成近500项设计作品，其中近百项实施建成的基础积累上，又历经了2009年全球建筑业寒意料峭一年的设计实践。

过去的一年里，AUBE（欧博设计）共完成高质量、富有创意的各类设计近50项，涵盖了城市设计、建筑设计、环境景观设计和工程设计四大专业类别。

这一年中，以贵阳国际会议展览中心项目为龙头（占地50hm²，总建筑面积90万m²的城市综合体），二月底规划设计、景观概念和各类建筑方案基本定稿；三月份，顺利完成向贵州省政府的汇报；四月份，获得贵阳市规划委员会和专业委员会审查的全票通过；五月份，获得修建性详细规划的批准；至十月份共完成近6000张A0加长的施工图纸，并参评Leed金奖认证和国家绿色生态二星级认证；从七月份开始配合现场施工，至今已完成了约80%土建工程……

这一年中，以深圳城建观澜居住区为代表（占地20hm²，总建筑面积55万m²），涵盖各种住宅类型，别墅、联排住宅、叠加住宅、花园洋房、中高层住宅、高层住宅、超高层住宅，从七月到十二月完成扩大初步设计、施工图设计，并完成相应的政府报审工作，共计完成近3000张A0加长的施工图纸……

这一年中，也许在深圳的建筑设计院的历史上，欧博是唯一一家设计院在当年完成三项类型不同，难度极高的抗震超限研究和审查设计：独创的建筑设计与支撑筒悬挂体系的结构技术完美结合的贵阳国际会议展览中心办公超高层—201大厦；300m高的深圳长富金茂大厦；四幢150m高的深圳城建观澜的超高层住宅……

Year 2009 was a most brilliant year, as we have overcome formidable challenges, achieved excellent results and made remarkable progress of building techniques for Aube Conception.

During more than a decade, Aube Conception has always followed its design philosophy "International conception, professional practice and local cultural integration", whether in Europe or in China. We have created devotedly more than 500 projects and nearly 100 of them have been constructed. In year 2009, the global building market was stagnant, but Aube Conception received delightful achievement.

We have undertaken 50 projects with high quality and originality in the field of urban planning and design, architecture design, landscape design as well as engineering design in this year.

In 2009, we have caught a large urban complex project opportunity - Guiyang International Conference & Exhibition Center (land area: 50ha, total building area: 900,000m²). The project design and site service have processed in the highest efficiency. In the end of February, the general planning, landscape conception and architectural schema design were defined in the integral way. In March, the above integral design was successfully confirmed by Guiyang Provincial Government. April, it was unanimously approved by the Guiyang Urban Planning committee. May, the detailed constructional planning permit was obtained through local urban planning bureau. October, 6000 construction drawings (A0 and A0+ size) have been submitted to the client; and the project is focused and prepared to obtain the Leed Golden degree's certification and National Eco-building Attestation (Two-Star). Until now, 80% of building construction works has been completed.

In 2009, our another representative project was the Guanlan Residential Community of SZ Expander Group (land area: 20ha, total building area: 550,000m²), which included villa, row-house, superimposed-house, town-house, multi-floors residence, residential tower and super tower. From July to December of 2009, we accomplished the development design, nearly 3000 construction drawings with A0 and A0+ size and obtained the authorities' approval.

In 2009, Aube Conception was perhaps historically the first design firm in Shenzhen, who has accomplished three anti-seismic researches and examinations within a year: 201 Tower of Guiyang International Conference & Exhibition Center with perfect combination of original architectural design and steel hanging structure system, Shenzhen

Changfu Jinmao Tower with a height of 300m, 4 residential towers with a height of 150m of SZ Expander's Guanlan Community.

In 2009, Aube Conception won continuously the 1st prize in following national or international design competitions: urban design of Sky City of Shenzhen, architecture design of the Buildings above Zhujilin Metro Section, architectural design of Zhongshan Jinyuan Residential Community and several landscape design competitions.

In 2009, we always insisted on the promise of "Offering professional service according to international standards", constantly improved the management, attached importance to the durable development and kept devoted professional attitude, consequently we achieved an almost impossible task and success in design field.

In 2009, to following our plan of "Travel through the world within a global vision," we put our feet onto Australia, Japan and Southeast Asia for our 12th study tour.

Either in the past, the year 2009 or to the future, Aube Conception always focuses on the following design practices:

the formation of urban block and the integration of urban function
the creation of city land mark and the progress of architectural technique
the regeneration of urban environment and the cross-over design
the experiment of local cultural integration and the sustainable design strategy.

Among the 50 projects we designed in 2009, we selected 30 into this annual book, which would show you our professional dedication, sedulous pursuit, active reflection and our persistence in creativity on the above design field. We would like not only share with all of you: friends, colleagues, clients and architectural critics, our works in 2009 by this book, and we hope also our works could strike a responsive chord and critique of the people who concern about the urban life space and the popularization of Chinese architecture.

这一年中, AUBE (欧博设计) 在深圳的“天空之城”项目、深圳竹子林地铁上盖物业、中山“金源花园”住宅区和多项环境景观设计项目在相应的国际和国内竞赛中独占鳌头获得中标……

这一年中, AUBE (欧博设计) 始终坚持“按国际水准提供专业化服务”的准确定位; 有效组织、高效管理、坚持发展、全情投入的职业态度使欧博设计在其历史上, 完成了大部分设计同行目前几乎不可能实现的瞩目业绩。

这一年中, AUBE (欧博设计) 以“全球视野, 走遍世界”的职业生活心态前往澳大利亚、日本和东南亚等地进行了欧博设计(中国)第十二次专业旅游考察……

无论AUBE (欧博设计) 的过去, 2009年还是未来, AUBE (欧博设计) 始终关注以下设计实践:

- 城市街区的形成和城市综合体的复合;
- 城市地标的塑造和建筑技术的进步;
- 城市环境再生和设计跨界;
- 地域文化的实验和城市生态环境的持续。

本书展现AUBE (欧博设计) 2009年50项作品中的30个项目, 正是AUBE(欧博设计)在国际设计平台上孜孜不倦地保持高度的敬业姿态, 在通往职业目标的道路上努力耕耘, 积极反思, 始终关注并实践以上的设计领域, 坚持回归设计本质, 在主流的设计领域中坚持设计的创意和推动社会的进步的体现。本书出版的目的不仅是希望与关注AUBE (欧博设计) 的每一位朋友、同行和学术评论界共同分享本年鉴展示的设计成果, 也是希望能够引起关注城市生活物质空间和中国建筑文化普及的每一位读者的共鸣、评价和批评!

欧博设计

董事长 主持设计师 冯越强

Aube Conception

President & Chief Designer: Yves Yueqiang Feng

目录

CONTENTS

欧博贵阳项目专篇

AUBE GUIYANG PROJECT

- 008 贵阳国际会议展览中心城市建筑综合体设计
- 014 贵阳国际会议展览中心景观设计
- 020 单体设计之1: 国际会议中心
- 026 单体设计之2: 展览中心
- 034 单体设计之3: 201大厦
- 040 单体设计之4: 商业中心
- 046 单体设计之5: 退台商业与景观
- 052 单体设计之6: 风情街
- 060 单体设计之7: SOHO

- 008 Urban Complex of Guiyang International Conference & Exposition Center
- 014 Landscape Design of Guiyang International Conference & Exposition Center
- 020 Guiyang International Conference & Exposition Center International Conference Center
- 026 Guiyang International Conference & Exposition Center Exposition Center
- 034 Guiyang International Conference & Exposition Center 201 Tower
- 040 Guiyang International Conference & Exposition Center Commercial Center
- 046 Guiyang International Conference & Exposition Center Terrace Commerce & Landscape
- 052 Guiyang International Conference & Exposition Center Characteristic Street
- 060 Guiyang International Conference & Exposition Center SOHO

欧博规划

AUBE PLANNING

- 070 贵阳新火车站片区及商业金融区城市设计
- 078 泉州洛江现代世界农业旅游观光生态小镇概念规划设计
- 084 深圳宝安中心区地铁站周边空间环境设计
- 088 深圳机场开发区西区即“天空之城概念性规划设计”国际竞赛

- 070 Urban Design of Guiyang New Railway Station Area & Commercial and Financial Area
- 078 Concept Planning of Luojiang Modern International Ecological Tourist Town
- 084 Urban & Landscape Design for Public Space around Subway Station of Central District of Bao'an, Shenzhen
- 088 Conceptual Planning Design of Sky City (west area of Shenzhen Airport Development Zone) of Shenzhen

欧博建筑

AUBE ARCHITECTURE

- 100 深圳远致创业园规划建筑概念设计
- 102 南方科技大学和深圳大学新校区拆迁安置项目-商住综合区规划建筑设计
- 108 南方科技大学和深圳大学新校区拆迁安置项目-产业园区规划建筑设计
- 112 深圳高新园区软件产业基地第三四标段建筑设计
- 120 深圳国际能源大厦建筑设计
- 126 中信银行大厦（深圳）项目建筑设计
- 130 惠州仲恺高新区总部经济区规划建筑设计
- 136 深圳文学艺术中心建筑设计
- 144 深圳地铁竹子林车辆段改扩建工程上盖建筑设计
- 154 贵阳市文化遗产博物馆及规划展览馆建筑设计
- 162 深圳城建集团观澜住宅项目建筑设计
- 166 成都天府华侨城纯水岸·C组团高层区及公共配套项目建筑设计
- 170 中山金源花园规划建筑设计

- 100 Planning & Architectural Design of Yuanzhi Innovation Park, Shenzhen
- 102 Removing and Resettlement of New Campus of South University of Science and Technology and Shenzhen University-Planning & Architectural Design for Commerce and Residence
- 108 Removing and Resettlement of New Campus of South University of Science and Technology and Shenzhen University-Planning & Architectural Design of Industry Park
- 112 Planning & Architectural Design of Software Industry Base (section III & IV) of Shenzhen High-tech Industrial Park
- 120 Architecture Design of Shenzhen International Energy Mansion
- 126 Architectural Design of China CITIC BANK (Shenzhen) Mansion
- 130 Planning & Architectural Design of Headquarters Economic Zone of Huizhou Zhongkai High-Tech Industrial Park
- 136 Architectural Design of Shenzhen Literary Arts Center
- 144 Architectural Design for Buildings above Zhuzilin Metro Station of Shenzhen
- 154 Architectural Design of Guiyang Cultural Heritage Museum and Planning Exhibition Hall
- 162 Architectural Design of SZEG Guanlan Residential Community in Shenzhen
- 166 Architectural Design of Residence Towers & Public Supporting Facilities of Block C of Chengdu OCT-The Riviera
- 170 Planning & Architectural Design of Jin Yuan Garden Residence in Zhongshan

欧博景观

AUBE LANDSCAPE

- 178 深圳城建集团观澜项目景观设计
- 184 深圳城建集团碧中园二期项目景观设计
- 188 深圳南头古城一2街1园景观设计
- 194 万科宁波金色水岸三期景观设计

- 178 Landscape Design of SZEG Guanlan Residential Community in Shenzhen
- 184 Landscape Design of SZEG Bi Zhong Yuan Residence (phase II) in Shenzhen
- 188 Landscape Design of Shenzhen Nantou Ancient City - 2 streets & 1 park
- 194 Landscape Design of Vanke Golden Bank (Phase III) in Ningbo

欧博贵阳项目专篇

AUBE GUIYANG PROJECT

索引

008 贵阳国际会议展览中心城市建筑综合体设计

014 贵阳国际会议展览中心景观设计

020 单体设计之1：国际会议中心

026 单体设计之2：展览中心

034 单体设计之3：201大厦

040 单体设计之4：商业中心

046 单体设计之5：退台商业与景观

052 单体设计之6：风情街

060 单体设计之7：SOHO

Index

- 008 Urban Complex of Guiyang International Conference & Exposition Center
- 014 Landscape Design of Guiyang International Conference & Exposition Center
- 020 Guiyang International Conference & Exposition Center International Conference Center
- 026 Guiyang International Conference & Exposition Center Exposition Center
- 034 Guiyang International Conference & Exposition Center 201 Tower
- 040 Guiyang International Conference & Exposition Center Commercial Center
- 046 Guiyang International Conference & Exposition Center Terrace Commerce & Landscape
- 052 Guiyang International Conference & Exposition Center Characteristic Street
- 060 Guiyang International Conference & Exposition Center SOHO

贵阳国际会议展览中心城市建筑综合体设计

Urban complex of Guiyang International Conference & Exposition Center

贵阳国际会议展览中心因其复杂性、紧迫性、挑战性成为欧博设计2008年底、2009年度最重要的实施项目。

欧博公司近百人设计团队在2008年12月8日至2009年10月31日期间，完成了项目研究、项目定位、项目控规和修规、方案报建以及90%的建筑单体的施工图设计与审批工作，确保2009年6月工程开工和施工作业地开展。

项目本身深刻体现了多种要素之间的统筹运行与良性互动。将基地内各类复合功能空间，按照城市街区的设计原理和城市活动特征，进行有效生动的城市空间组合。

项目以“生态筑城·会通天下”、“山水会展·原乡国际”作为规划主题。

以一心、两轴、四片作为总体规划结构。

从生态、交流、山水和原乡四个基本点出发，充分发挥国际会展中心与会议中心的核心统筹作用，以居住、办公、商业、休闲等功能为依托，分别结合不同的建筑功能与形态要求，注入富有地方原生态特色的文化符号和景观构想，创造并培育一座生机盎然的新型缩微都市，为古老深山打开一扇面向国际的窗口。

业主名称：中天城投集团股份有限公司

位置：贵阳市金阳区

用地面积：总体规划120.6hm²，总图设计51.8hm²

容积率：1.76

建筑面积：88.88万m²

建筑高度：201m

主要功能：由会展中心、会议中心、五星级酒店、观光综合楼、商业及配套办公、公寓等服务设施组成

在建项目：截止2009年12月3日已完成80%结构土建



Guiyang international conference & exhibition center is one of AUBE's most challenging projects in 2008 and 2009 due to its complexity and time limit. From 8 December 2008 to 31 October 2009, it took almost one year for AUBE to complete research, orientation, control planning, regulatory planning, 90% architecture drawings and examinations for making sure the opening of the construction of June 2009. The design is a reflection of a virtuous circle among different elements in which a variety of compound function spaces are combined in an efficient and vivid way, following the concept of urban block design and its activity feature.

The planning is aimed at an international eco-friendly conference & exhibition center with the original township characteristics.

The general structure is planned to consist of one center, two axis and four parts.

The design is guided by four essential elements including ecology, communication, landscape and original township characteristics, giving a full play to the center's coordinating function. By injecting original culture symbol and landscape concept, the design is aimed at a miniature metropolis where a variety of functions and forms are well applied to perform the functions like apartment, office, commerce and leisure, etc. opening a window to the world.

Proprietor: Zhongtian Urban Development Group Co., Ltd

Location: Jinyang district, Guizhou

Land area: General planning 120.6 ha, master planning 51.8ha

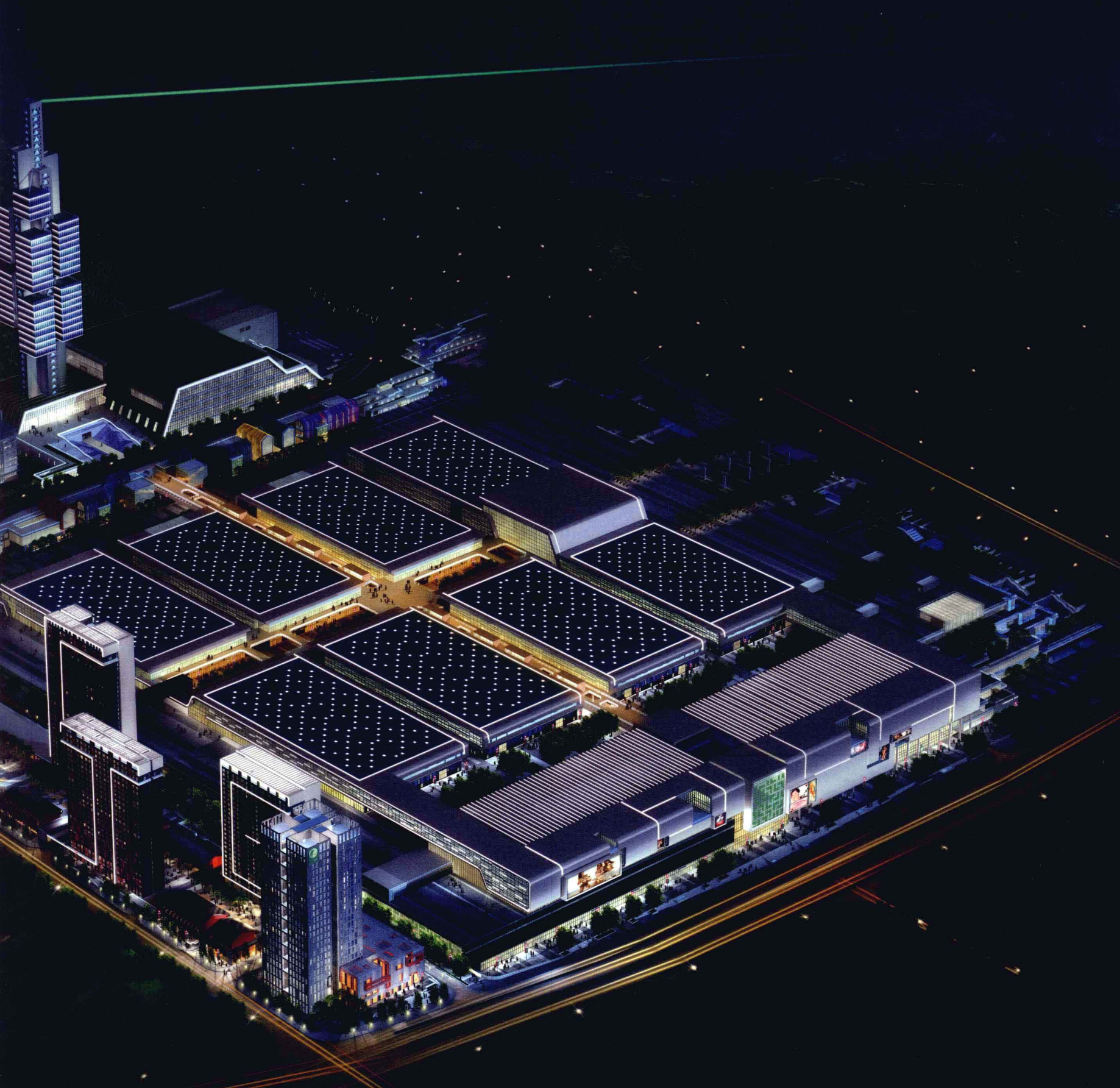
FAR: 1.76

Building area: 888 800m²

Height: 201m

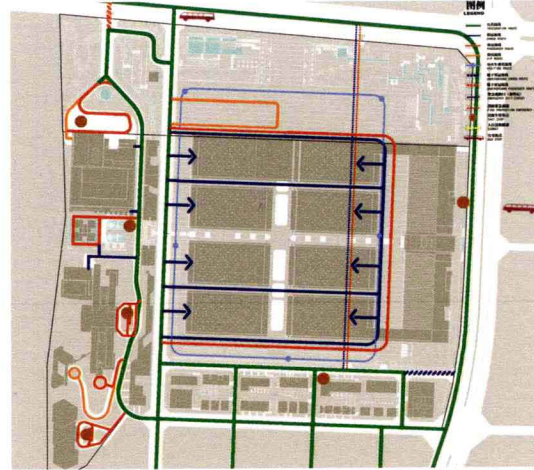
Function: Exhibition, conference, 5 stars hotel, sightseeing tower, commerce, office, apartment, etc.

Under construction: 80% of the structure construction has been finished by 3 December 2009

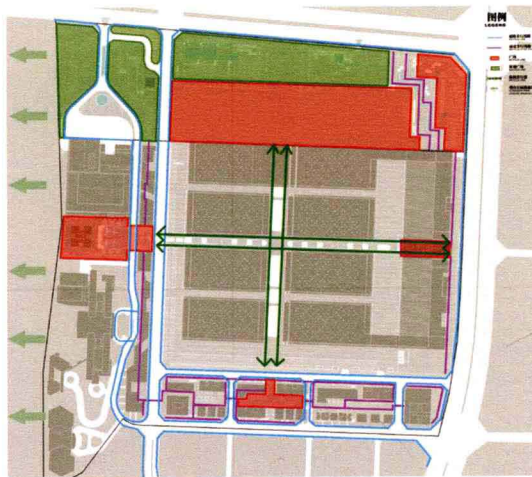




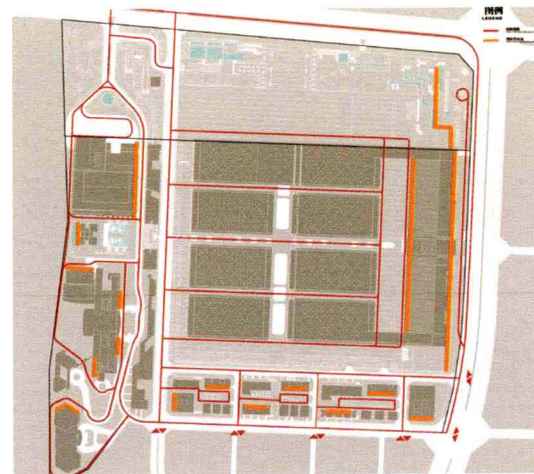
功能分析图



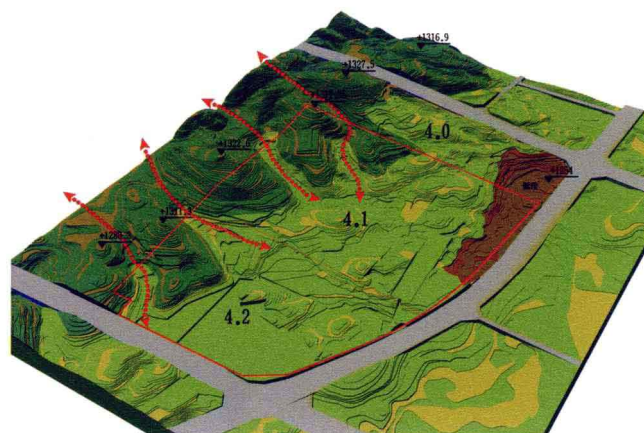
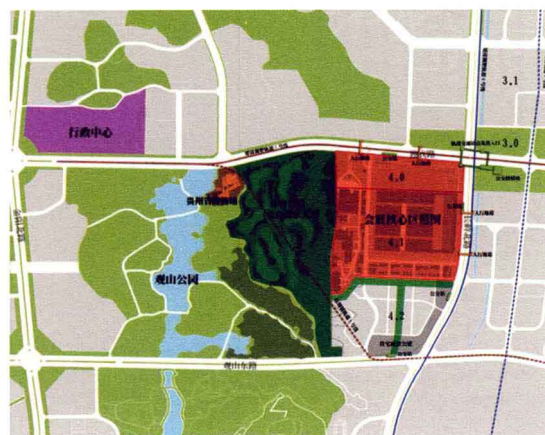
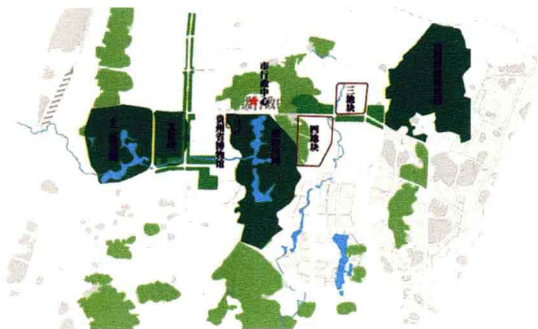
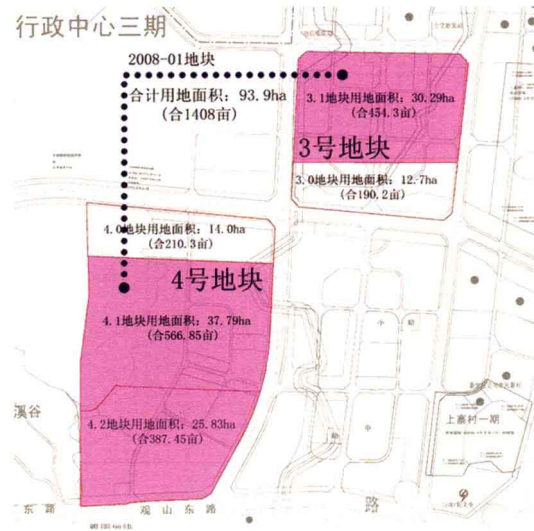
机动车行分析图

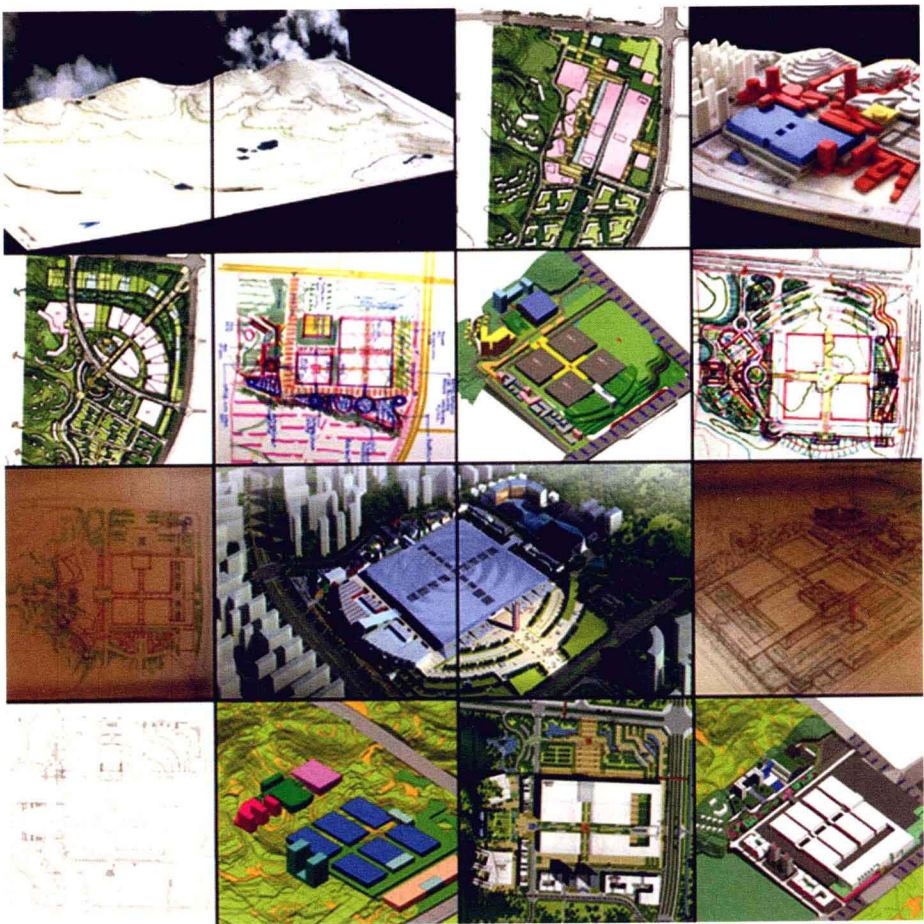


步行系统规划图

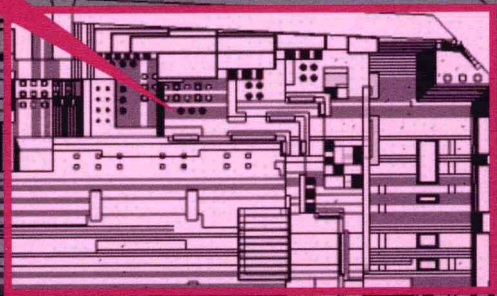


消防车道规划图



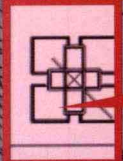
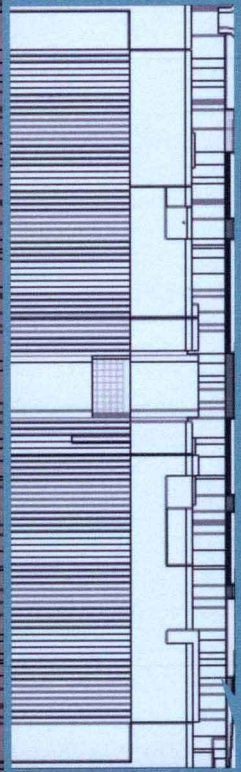
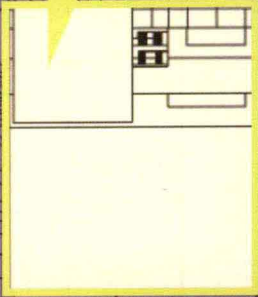


退台商业
Exposition Center
Terrace Commerce



会议中心
Exposition center international
conference center

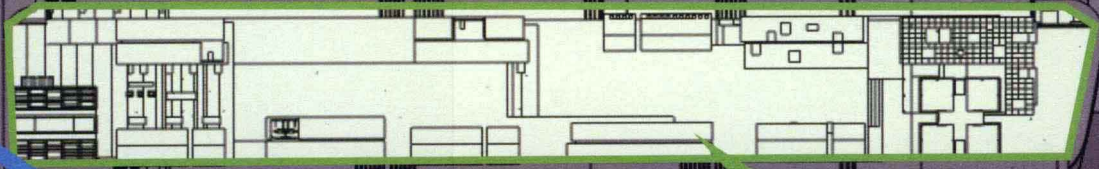
展览中心
Exposition Center Exposition Center



201大厦
Exposition center 201 Tower

商业中心
Exposition Center
Commercial Center

五星级酒店
Five-star hotel



风情街
Exposition center characteristic street

SOHO
Exposition Center SOHO

贵阳国际会议展览中心景观设计

Landscape Design of Guiyang International Conference & Exposition Center

贵阳国际会议展览中心是一个兼具会议、会展、商业等功能的大型综合建筑群，如何体现其生态的环境、国际化、原乡性的文化特点，是我们设计的主要课题。

生态景观：“时代与文化的共鸣，城市与自然的共生”。在生态层面，注重两条线索：绿色生态、人文生态。设计充分体现当代都市气息及当代人的审美趋向，与规划、建筑设计充分对话。对当地传统文化进行解析与转译，萃取贵州传统文化精髓，合理应用于景观设计。

肌理构思：商品条形码是现代化商业流通的象征与基础，是商品流通的“身份证”。通过对条形码肌理的提炼，作为会展中心的场地肌理，贯穿延伸至整个会展中心的地面，以其抽象的独特性缔造空间的“唯一性”。

业主名称：中天城投集团股份有限公司

位置：贵阳市金阳区

用地面积：51.8 hm²

景观面积：31.81万m²

主要功能：会议中心，商业会展

Guiyang International Conference & Exhibition Center is a large urban complex combining the functions like conference, exhibition and commerce etc., which requires a design reflecting its eco-friendliness, internationalization and original feature.

Ecological landscape: Two elements of environment and humanity guide the design of its ecological landscape which reflects a modern urban life and art trend, interacting with the planning and architectural design. The essence of Guizhou's traditional culture is well applied to the landscape design through their explanation and interpretation.

Texture concept: Merchandise bar code is the symbol and basis of modern commodity market, which is an ID card for commodity circulation. The concept of bar code texture is well applied to the design of the center's ground paving texture, bringing up uniqueness in its style and space.

Proprietor: Zhongtian Urban Development Group Co.,Ltd

Location (city / district): Jinyang district, Guizhou

Land area: 51.8ha

Landscape area: 318100m²

Function: Conference & Exposition center



