

THE INTERNATIONAL Show Flat Collection I

国际样板房大观 (上)

深圳市创扬文化传播有限公司 策划
徐宾宾 编



图书在版编目 (CIP) 数据

国际样板房大观. 上 / 徐宾宾 编. —南京: 江苏人民出版社, 2011.3

ISBN 978-7-214-06799-9

I. ①国… II. ①徐… III. ①住宅—室内设计—作品集—世界 IV. ① TU241

中国版本图书馆 CIP 数据核字 (2011) 第 010225 号

国际样板房大观 (上)

徐宾宾 编

责任编辑 蒋卫国

出 版 江苏人民出版社

发 行 天津凤凰空间文化传媒有限公司

销售电话 022-87893668

网 址 <http://www.ifengspace.cn>

集团地址 凤凰出版传媒集团 (南京湖南路 1 号凤凰广场 A 楼 邮编: 210009)

集团网址 凤凰出版传媒网 <http://www.ppm.cn>

经 销 全国新华书店

印 刷 北京建宏印刷有限公司

开 本 965 毫米 × 1270 毫米 1/16

印 张 22

字 数 176 千字

版 次 2011 年 3 月第 1 版

印 次 2011 年 3 月第 1 次印刷

书 号 ISBN 978-7-214-06799-9

定 价 298.00 元 (USD60.00)

(本书若有印装质量问题, 请向出版社发行部调换)

THE INTERNATIONAL Show Flat Collection I 国际样板房大观（上）

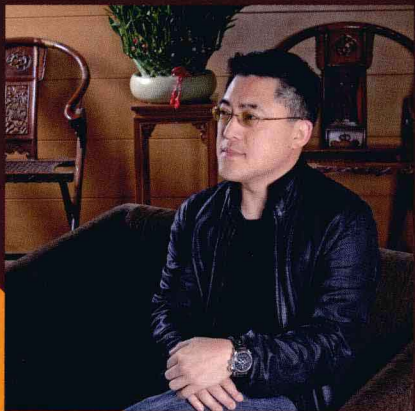
深圳市创扬文化传播有限公司 策划
徐宾宾 编

- 004 长虹峰华 Changhong Over The Top
- 012 御品苑 Royal Garden
- 018 上河苑 Riverside Garden
- 030 隐 Hidden
- 038 爱登堡——高宅 Edinburgh – Gao's Residence
- 044 吴兴街 Wuxing Street
- 048 升捷丽舍 Yu's Residence
- 052 淡水新横滨 Tamsui New Yokohama
- 058 三重叶公馆 Sanchung Yip's Residence
- 066 大气奢华的空间展演 The Demonstration of A Magnificent Luxurious Space
- 074 竹北钟小姐住宅 Ms. Zhong's Residence in Zhubei
- 080 北京像素样板间 PIXEL in Beijing Modelroom
- 086 雷诺兹宅邸 Reynolds' Residence
- 090 GJ-5别墅 CABIN GJ-5
- 094 单间公寓的彻底翻新 Total Renovation of A Studio Apartment
- 098 比尔住宅 Bill House
- 102 kerr别墅 Kerr House
- 108 地利根德阁 Tregunter Tower
- 116 九龙湾丽晶花园 Richland Gardens at Kowloon Bay
- 122 老屋翻新 The Old Condo Renovation
- 128 江岸公馆——新古典 Riverside Mansion – Neo Classical
- 132 富抱泉 Fubao Fountain
- 138 悠然假期 Leisurely Vacation
- 146 恒润御景湾样板房 Show Flat of Royal Village Developed by Hengrun Real Estates
- 150 东方夏威夷大岛R-2 R-2 in Big Island Zone of Oriental Hawaii
- 158 花界 Domain of Flowers
- 162 豪门府邸别墅 Royal Villa
- 168 保利A6 Poly A6
- 174 保利A7 Poly A7
- 178 富兰克林大街顶楼公寓 Franklin Street Loft

目录

CONTENTS

182	Sackett街联排别墅	Sackett Street Townhouse
186	Gral Rodriguez别墅	House in Gral Rodriguez
188	56号大街公寓	56 Street Apartment
192	城南逸家叠拼DA-1户型	DA-1 Type of Land Leader Estates
198	禅悦沉稳下的悠然氛围	A Space of Zen
204	权世界B2-5F	Power World B2-5F
210	BEN M'S公寓	BEN M'S Apartment
214	广州天鹿湖别墅山庄	Guangzhou Tianlu Lake Villa
220	福州桂湖别墅	Fuzhou Laurel Lake Villa
226	深圳红树西岸样板房	A Show Flat in Mangrove West Coast, Shenzhen
234	懋园	Flourishing Garden
242	白金果岭别墅	Platinum Green
250	大华锦绣177号	No. 177 of Dahua Graceful Oasis
256	大华锦绣200号	No. 200 of Dahua Graceful Oasis
262	涵碧景苑	Jade Green Towers
266	融侨华府	Rongqiao Noble House
270	融侨观邸	Rongqiao Riverside Residence
276	“醇”生活	“Pure” Life
280	君悦花园蔡宅	Supreme Garden Cai's Residence
284	凤凰山一号别墅	Phoenix Hill No.1 Villa
290	沈阳乐城国际样板房	Show Flat of Happy City International
294	振业乡墅——港式风格	Fortune Town Rural Villa - Spanish European-style
302	振业乡墅——西班牙乡村风格	Fortune Town Rural Villa - Simple European-style
308	简欧风格	Verdure International City
316	山水风华	Beautiful Mountains and Streams
322	某私人别墅	A Private Villa
330	轻描混搭	Understated and Fabulous Mix
338	大连时代广场精装公寓	Deluxe Apartment of Dalian Time Square
	都市森林公寓	Apartment of Metropolis Forest



长虹峰华

Changhong Over The Top

设计师：王文亚

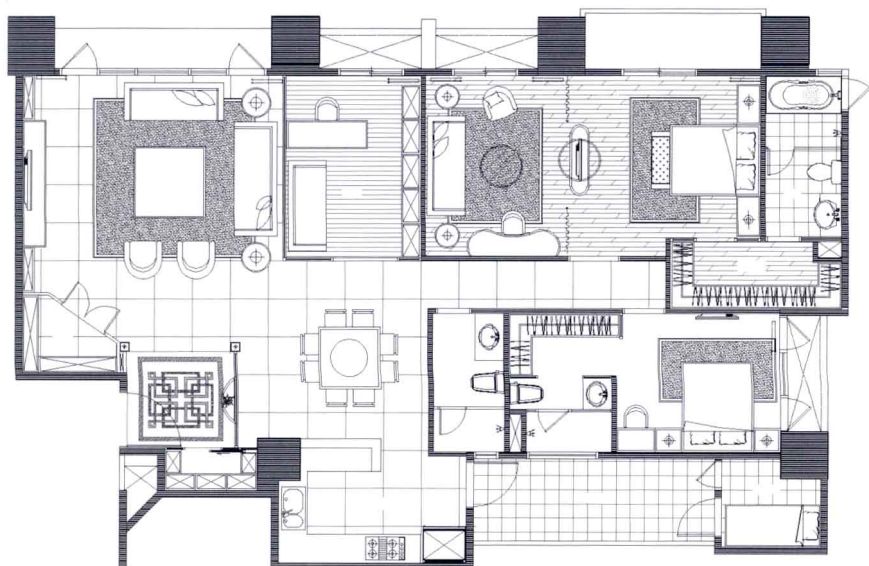
设计公司：异国设计

项目地点：台北新店

建筑面积：243平方米

主要材料：白膜玻璃、曼特宁木皮、橡木洗米、雪白银狐石、茶镜





Entering the foyer, you can see sandblasted clear tawny glasses revealing a Chinese-style elegant air. Passing into the living room, people are faced with a low-sill opened generous window that efficiently introduces daylight inside. The ample space makes people forget about being in a bustling, crowded city. Combined with furniture and lightings, a luxurious yet modern space emerges. A display cellarette is planned by taking advantage of the living room's corner to enhance the function and quality of life.

Based on the concept of a shared space, the value from a joint employment of the kitchen, dining room and study room is created, showing an open public area. Between the dining room and kitchen (light food cooking area), an open bar counter is installed doubling as a dining table while the kitchen utensils with a fine texture of white steel baked lacquer and built-in electrical gadgets show the coordination, tension of the lines and planes perfectly.

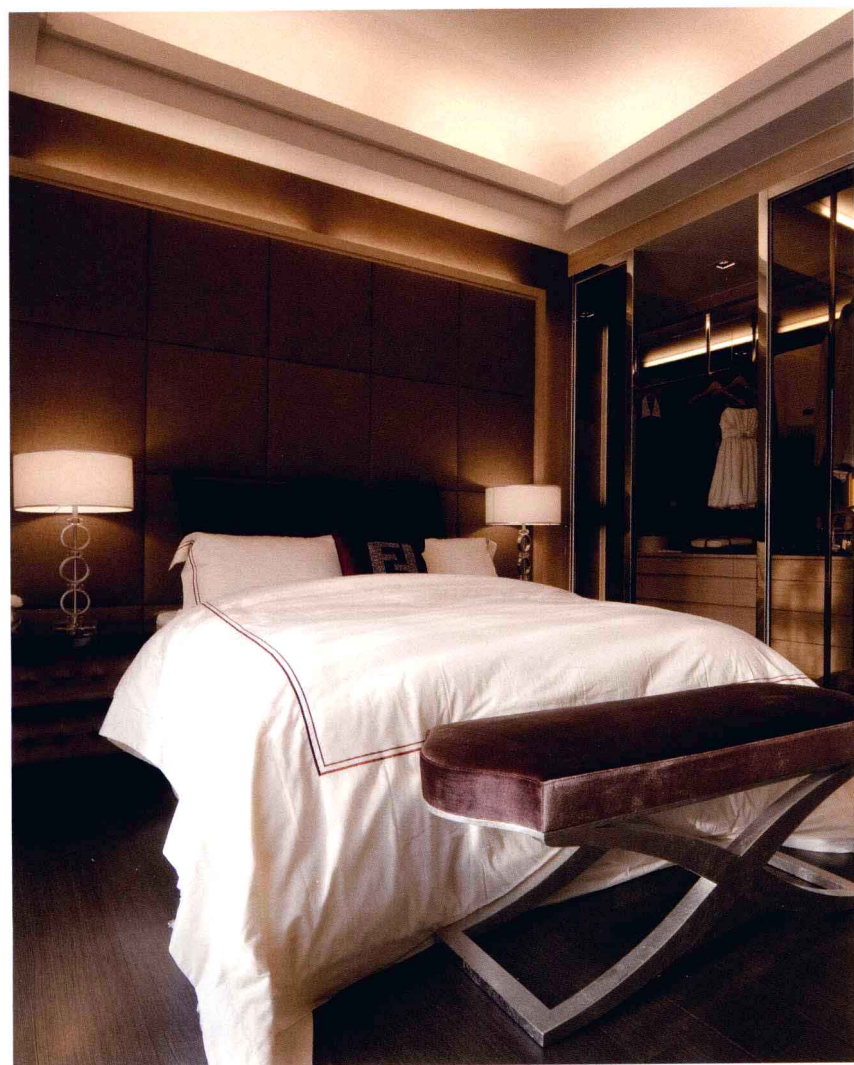
The master bedroom has an en-route sitting room to give the room one more function instead of a single sleeping space. Plus a large outdoor balcony, people can even enjoy a cozy rest at the balcony, also an intimate space belonging to the male and female owners.











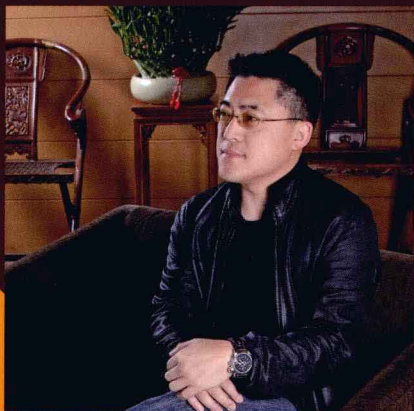
进入玄关，利用穿透的茶色玻璃喷砂，流露出中式的风雅气息。辗转进入客厅之后，面对的是低台度的大面开窗，能有效地将光线引入室内。空间的宽敞，能让人忘却身在都市的繁忙拥挤。搭配家具、灯光的展现，呈现出奢华又带点现代感。有效地利用客厅的角落规划了展示酒柜，让生活机能及质量提升。

就空间共享的观念上制造出厨房、餐厅、书房的共同利用价值，呈现出开阔的公共领域。餐厅与厨房（轻食料理区）之间，设置开放式吧台兼具便餐台机能，厨具藉由白色钢烤的细腻质感及电器机具方面，以内嵌的方式规划，将线面的协调张力完美地表现出来。

主卧室内带有客厅，让房间内多了一个机能，而不单只是睡眠空间。加上一个较大的户外阳台，让人在阳台上也能惬意地休憩，拥有属于男女主人的私有空间。







御品苑

Royal Garden

设计师：王文亚

设计公司：异国设计

项目地点：台北市石牌路

建筑面积：126平方米

主要材料：橡木染灰、黑檀木染黑、茶色玻璃、超耐磨木地板、集成风化木染灰、千层玉





The project is designed to be modern and trendy. In the foyer, the flooring pattern made up by thousand-lamination marble and the reflection of a large bright mirror make the small foyer show a big view.

Entering the living/dinning room, the heightened dimension plus splendid lights from crystal pendant lamps add the richness and fun to the light and shadow in the space. Sofa wall is used with tawny glass to replace a solid wall, showing an indistinctly penetrating sense of space and responding to the black glass of TV wall to create a smooth projection of lights and shadows. An L shaped full-height clear glass for lighting at one side of the living room, combined with the raised floor, create a multifunctional space incorporating a Japanese-style room, study room and living room, which also allows natural light penetrate inside, presenting an elegant, carefree platform for rest.

The mezzanine floor is occupied by the visual & audio room and study room, limited by the height, large-scale mirrors are used to make up for the insufficient height through their clean lines. The master bedroom is also made into a loft with the closet on the mezzanine floor, where the bright mirrors and stainless steels are main materials to enlarge the space so that it won't feel constraint as otherwise restricted by the height.





