

陝
西



出土
青銅器

BRONZES
FROM
NORTHERN SHAANXI

5

編著 陝西省考古研究院
主編 曹瑋

四川出版集團
巴蜀書社



主編 曹璋

陝北出土青銅器

編著 陝西省考古研究院

第五卷

四川出版集團
巴蜀書社
2009·成都



Edited by CAO WEI

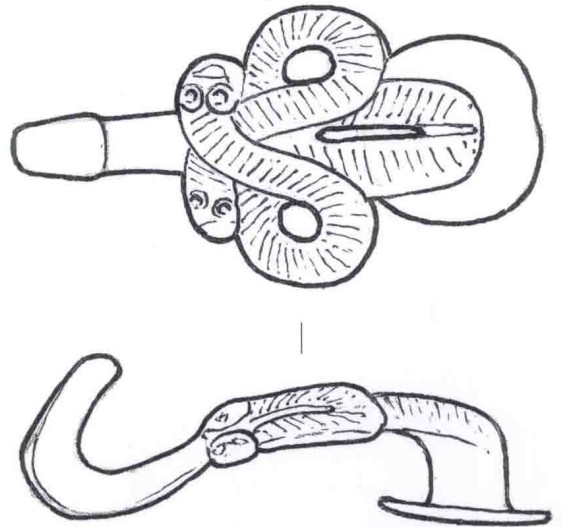
**BRONZES
FROM NORTHERN
SHAANXI**

Written by Shaanxi Institute of Archaeology Research

VOLUME V

**BASHU PUBLISHING HOUSE
SICHUAN PUBLISHING GROUP**

2009 · CHENGDU



獸形帶鈎（榆林211）

戰國

1993年出土於陝西省神木縣喬岔灘鄉喬岔灘村

現藏於陝西省榆林市文物保護研究所

通長4.1cm，重量10g

螭首形鈎首，雙蛇盤踞形鈎體，鈎鈕於鈎尾。

Belt hook

Warring States

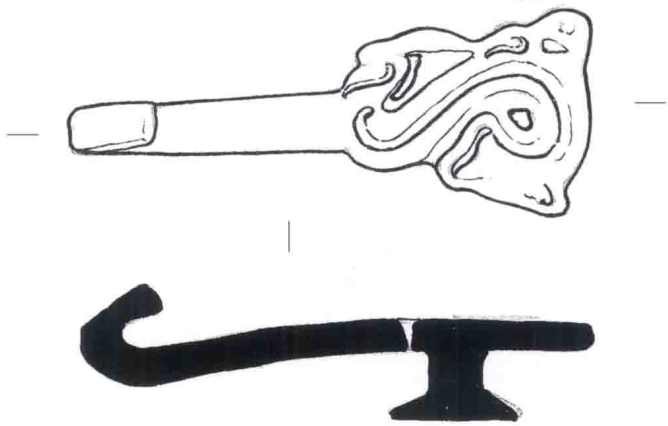
Discovered in 1993 at Qiaochatancun, Qiaochatan, Shenmu County, Shaanxi Province

Institute of Cultural Relics Preservation of Yulin, Shaanxi Province

Length 4.1 cm, weight 10 g

The body of this small belt hook rising from a round button takes the form of two intertwined snakes whose bodies are marked by slanted lines in relief. The hook curves upward forming an animal head.





獸形帶鈎（神木686）

戰國

1997年陝西省神木縣公安局移交

現藏於陝西省神木縣文物管理委員會辦公室

通長6.1cm，重量18g

螭首形鈎首，獸形鈎體，鈎鈕近鈎尾。

Belt hook

Warring States Period

Transferred in 1997 from the Police Bureau of Shenmu County, Shaanxi Province

Office of Cultural Relics Administrative Committee, Shenmu County, Shaanxi Province

Length 6.1 cm, weight 18 g

One end of this belt hook is shaped like a crouching serpent with its head facing backwards below which is a round button. The body of the dragon is marked by deep incised lines. The other end is a hook shaped like an animal head.

0 0.9cm





獸形環鏈帶鈎（綏德148-2）

戰國

1997年陝西省神木縣公安局移交

現藏於陝西省神木縣文物管理委員會辦公室

通長8.0cm，重量146g

螭首形鈎首，方形鈎體一側有雙環套接環鏈，鈎鈕近鈎尾。鈎面圓形與不規則形鏤孔以鑲嵌構成獸形紋飾。環鏈殘斷。

Belt hook with chains

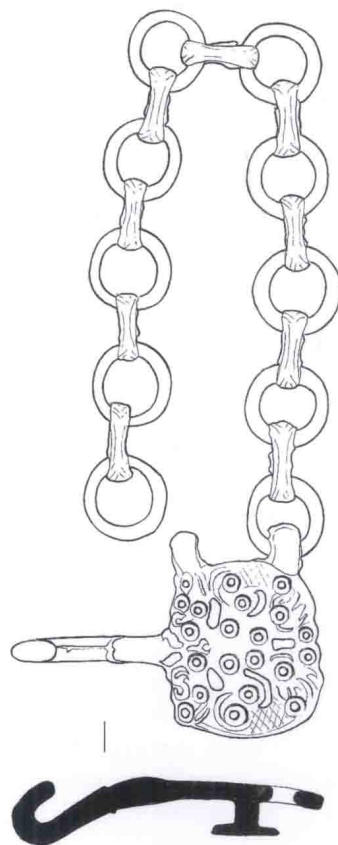
Warring States Period

Transferred in 1997 from the Police Bureau of Shenmu County, Shaanxi Province

Office of Cultural Relics Administrative Committee, Shenmu County, Shaanxi Province

Length 8.0 cm, weight 146 g

This belt hook has a square body with two small knobs attached to ten circular interconnected chains joined by small oval chains and a neck tapering to a hook in the shape of an animal head. The surface of the body is fully covered with multiple circular recesses that originally held inlays. A button projects under the body of the hook.





獸形帶鈎（子洲978）

戰國

1995年陝西省子洲縣公安局移交

現藏於陝西省子洲縣文管所

通長6.0cm，殘重11g

螭首形鈎首，四蛇盤踞形鈎體，鈎鈕殘斷。

Belt hook

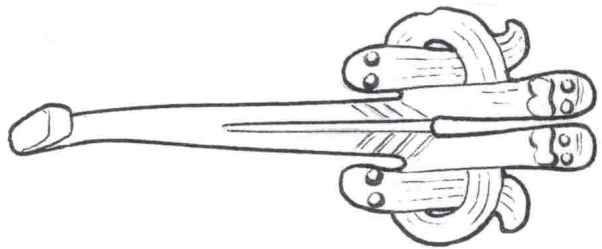
Warring States Period

Transferred in 1995 from the Police Bureau of Zizhou County, Shaanxi Province

Cultural Relics Administration of Zizhou County, Shaanxi Province

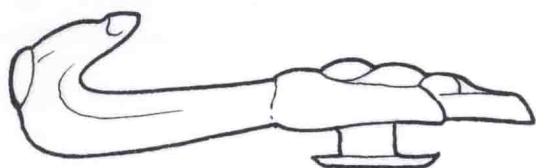
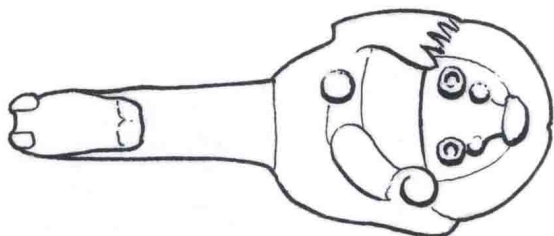
Length 6.0 cm, weight 11 g

This belt hook features an end shaped like four intertwined snakes right above a round button, now broken. The neck with a slit running through the middle section tapers to a hook in the shape of an animal head.



0 0.8cm





0 1.25cm

獸形帶鉤（子洲431）

戰國

1995年陝西省子洲縣公安局移交

現藏於陝西省子洲縣文管所

通長8.6cm，重量23g

螭首形鉤首，獸形鉤體，鉤鈕近鉤尾。

Belt hook

Warring States Period

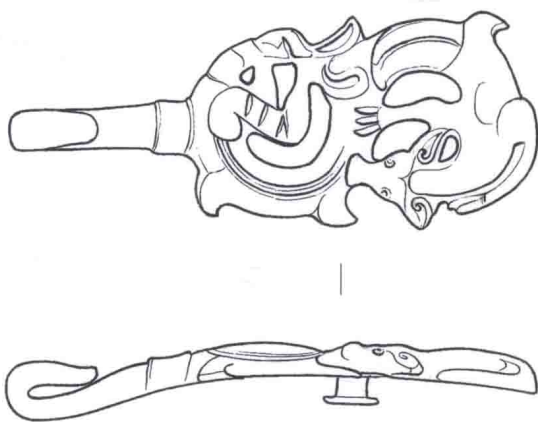
Transferred in 1995 from the Police Bureau of Zizhou County, Shaanxi Province

Cultural Relics Administration of Zizhou County, Shaanxi Province

Length 8.6 cm, weight 23 g

This belt hook features a bulging end right above a round button in the shape of an animal depicted with its eyes, a nose, and legs with claws. The neck tapers to a hook in the shape of an animal head.





0 1.6cm

獸形帶鈎（綏德148-1）

戰國

1980年以前出土於陝西省綏德縣

現藏於陝西省綏德縣博物館

通長10.8cm，重量80g

螭首形鈎首，兩獸曲踞鈎體，鈎鈕近鈎尾。

Belt hook

Warring States Period

Discovered before 1980 from Suide County, Shaanxi Province

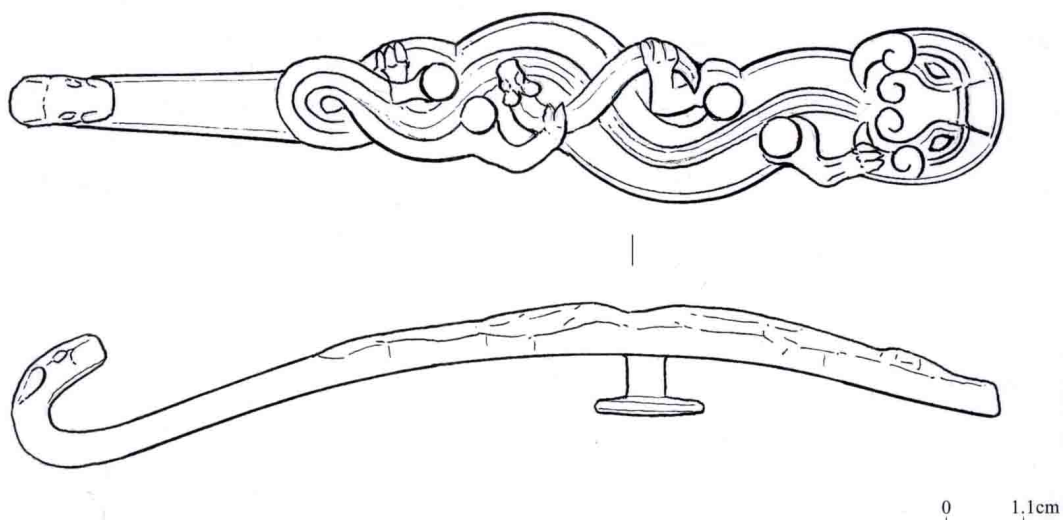
Suide County Museum, Shaanxi Province

Length 10.8 cm, weight 80 g

The distinctive oval body of this belt hook is shaped into an openwork depicting two animals in combat. One animal is likely a deer biting another animal. The deer is accented by its curved body, a distinctive head, and legs and paws. A button is situated in the middle of the body beneath the openwork.







獸形帶鉤（綏德375-1）

戰國

1980年以前出土於陝西省綏德縣

現藏於陝西省綏德縣博物館

通長14.0cm，重量110g

螭首形鉤首，獸曲身捲尾於鉤體。鉤鈕近鉤尾。

Belt hook

Warring States Period

Discovered before 1980 from Suide County, Shaanxi Province

Suide County Museum, Shaanxi Province

Length 14.0 cm, weight 110 g

The body of this belt hook is dominated by a large serpent with a zigzag body with four clawed paws and a curved tail. A small serpent defined by its head and part of the curved body intertwines with the large serpent. The round head of the large serpent is accented by ears, eyes and a nose, all in relief. Two grooves run on the back of the large serpent. The hook is cast into the shape of an animal head. A button is located toward the head of the serpent.





獸形帶鈎（綏德389）

戰國

1957年陝西省綏德縣供銷社聯合社廢品收購站揀選

現藏於陝西省綏德縣博物館

通長14.7cm，殘重77g

鈎首殘斷，方形鈎體，側面有兩半圓形環套接環鏈，鈎鈕近鈎尾。鈎面飾兩獸側形與一正面獸首。環鏈殘斷。

Belt hook

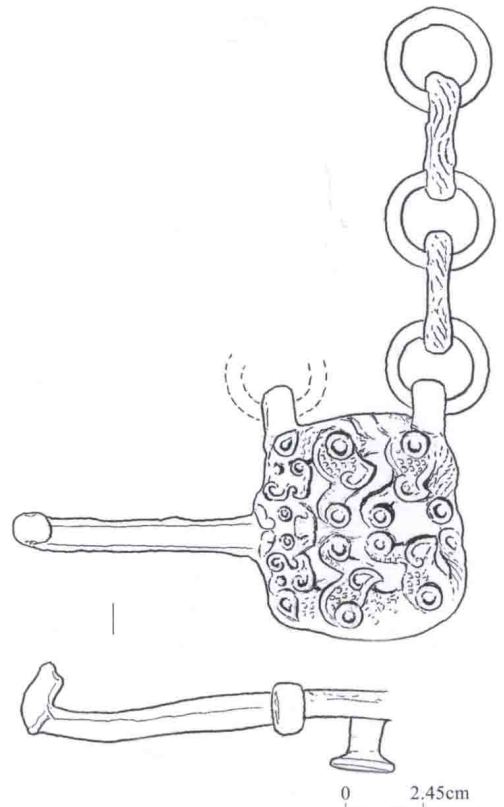
Warring States Period

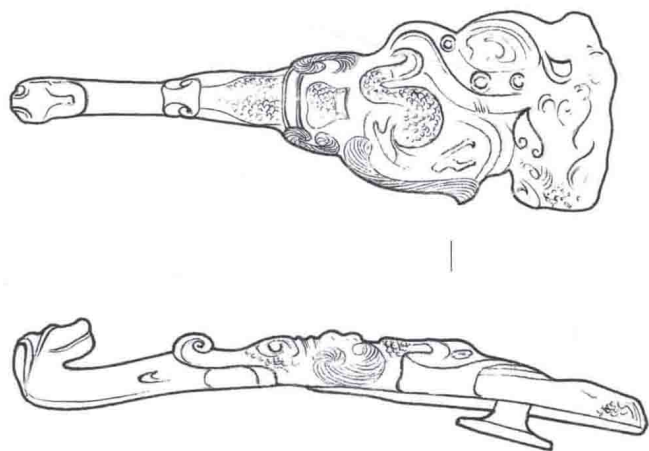
Selected in 1957 from a waste collection station of the Supply and Marketing Cooperative of Suide County, Shaanxi Province

Suide County Museum, Shaanxi Province

Length 14.7 cm, weight 77 g

A rectangular plaque decorated with two unidentifiable raised animals in profile and one animal head in frontal view on the surface constitutes the body of this belt hook. A hook (now partially damaged) extends from the body of the plaque to the wearer's left. Each of the two loops at the bottom of the plaque once hold a chain at the right angle, now one of the chains is missing. The remaining chain consists of three rings linked by two oval shaped connectors with a constricted waist. A button projects from the underside.





0 1.3cm

獸形帶鉤（綏德480-1）

戰國

1960年於陝西省綏德供銷聯合社廢品收購站揀選
現藏於陝西省綏德縣博物館

通長10.5cm，重量69g

螭首形鉤首，獸形鉤體，鉤鈕近鉤尾。

Belt hook

Warring States Period

Selected in 1960 from a waste collection station of the Supply and Marketing Cooperative of Suide County, Shaanxi Province

Suide County Museum, Shaanxi Province

Length 10.5 cm, weight 69 g

The body of this belt hook features unidentifiable animals in relief. The neck decorated with a scroll pattern tapers to a hook in the shape of an animal head. A button is fixed onto the reverse side of the body.





獸形帶鈎（綏德482-3）

戰國

1960年於陝西省綏德供銷聯合社廢品收購站揀選

現藏於陝西省綏德縣博物館

通長5.8cm，重量22g

螭首形鈎首，半圓形鈎體上飾一捲體獸，鈎鈕近鈎尾。

Belt hook

Warring States Period

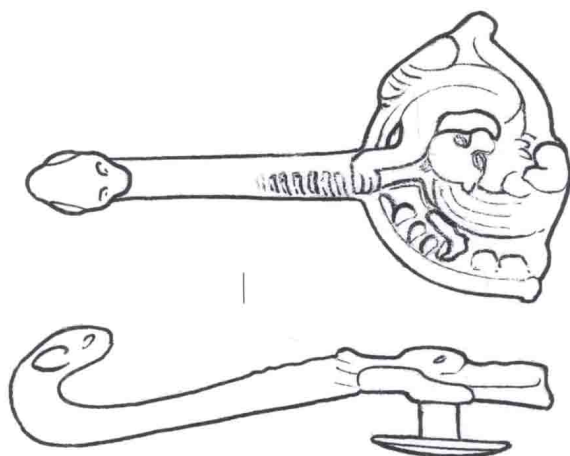
Selected in 1960 from a waste collection station of the Supply and Marketing

Cooperative of Suide County, Shaanxi Province

Suide County Museum, Shaanxi Province

Length 5.8 cm, weight 22 g

This belt hook is cast in the shape of an animal turning into a circle under which is a button. The ears, eyes, and nose of the animal are portrayed. Three striated patterns are shown on the neck which tapers to a hook in the shape of an animal head.



0 0.8cm





獸形帶鈎 (綏德580-5)

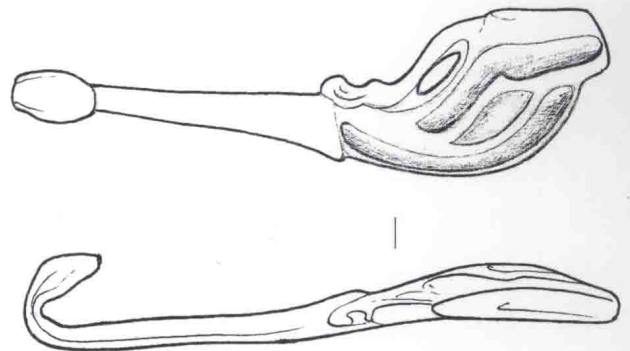
戰國

1997年陝西省綏德縣公安局移交

現藏於陝西省綏德縣博物館

通長9.1cm，殘重26g

螭首形鈎首，獸形鈎體，鈎鈕殘斷。



Belt hook

Warring States Period

Transferred in 1997 from the Police Bureau of Suide County, Shaanxi Province

Suide County Museum, Shaanxi Province

Length 9.1 cm, weight 26 g

The end of this belt hook is fashioned into what is most likely an animal head in profile. Deep grooves are used to define the simple facial features. The neck tapers into a hook in the shape of an abstract animal head.

0 1.2cm





獸面形帶鉤（延安359）

戰國

1991年出土於陝西省延安市棗園鄉韓家溝村

現藏於陝西省延安市文物研究所

通長5.3cm，重量23g

螭首形鉤首，獸面形鉤體，鉤鈕近鉤尾。

Belt hook

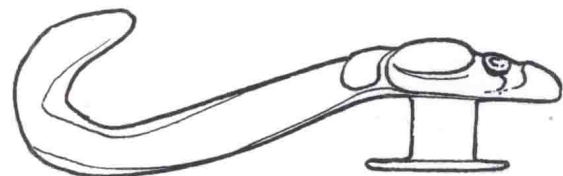
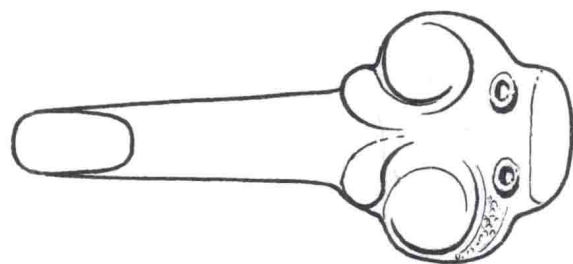
Warring States Period

Discovered in 1991 at Hanjiagoucun, Zaoyuan, Yan'an, Shaanxi Province

Cultural Relics Institute of Yan'an, Shaanxi Province

Length 5.3 cm, weight 23 g

The end of this belt hook takes the form of an animal head defined by prominent bulging eyes and a snout. Below the end is a large button. The arched neck tapers to a hook in the shape of an animal head.



0 0.77cm

