

海南黎族织锦图案，在历史上曾经被视为区分不同血缘与部落群体的重要标志。它是黎族哈、杞、赛、润、美孚五大方言区祖源、族系、图腾、祭祀和生活景象的重要文化符号。

黎族先民在没有自己文字的情况下，用图案记录历史，这些图案成为见证黎族历史文化的活化石。黎族五大方言区各自的图案循序演变，各放异彩，各领风骚。它是黎族人民共有的珍贵文化遗产，也是世界非物质文化遗产中的奇葩。作为中华民族的文化瑰宝——黎族织锦图案将流芳百世。

Hainan Li Brocade Pattern has been a key symbol in the history to distinguish the consanguinity and tribe. It was the important culture symbol of ancestor, family, totem, fete, and life scene for the five dialect areas which were Ha dialect, Qi dialect, Sai dialect, Run dialect and Meifu dialect.

The ancestor of Li people used the pattern to record the history in the epoch when they have no their characters. The pattern was the living fossil of Li peoples' history and culture. In its five dialect area, their patterns were evolved step by step and have their own characteristic and beauty. Li pattern is the valuable culture heritage of Li people, and also the treasure of world non-material cultural heritage. Being a Chinese peoples' culture treasure, the Li Brocade Pattern will have a niche in the temple of fame.

哈方言黎族妇女织锦照片

THE HA DIALECT REGION BROCADING WOMEN IN SANYA

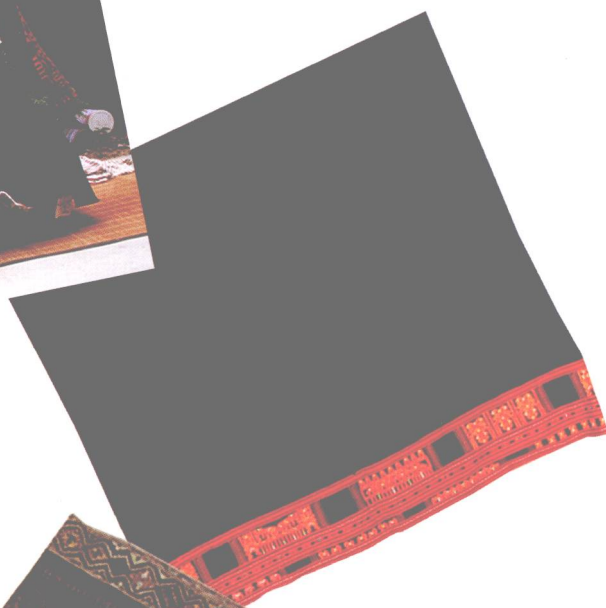
织锦妇女



查看黎锦 Checking Li brocade patterns

Brocading women

哈方言织锦 Ha dialect



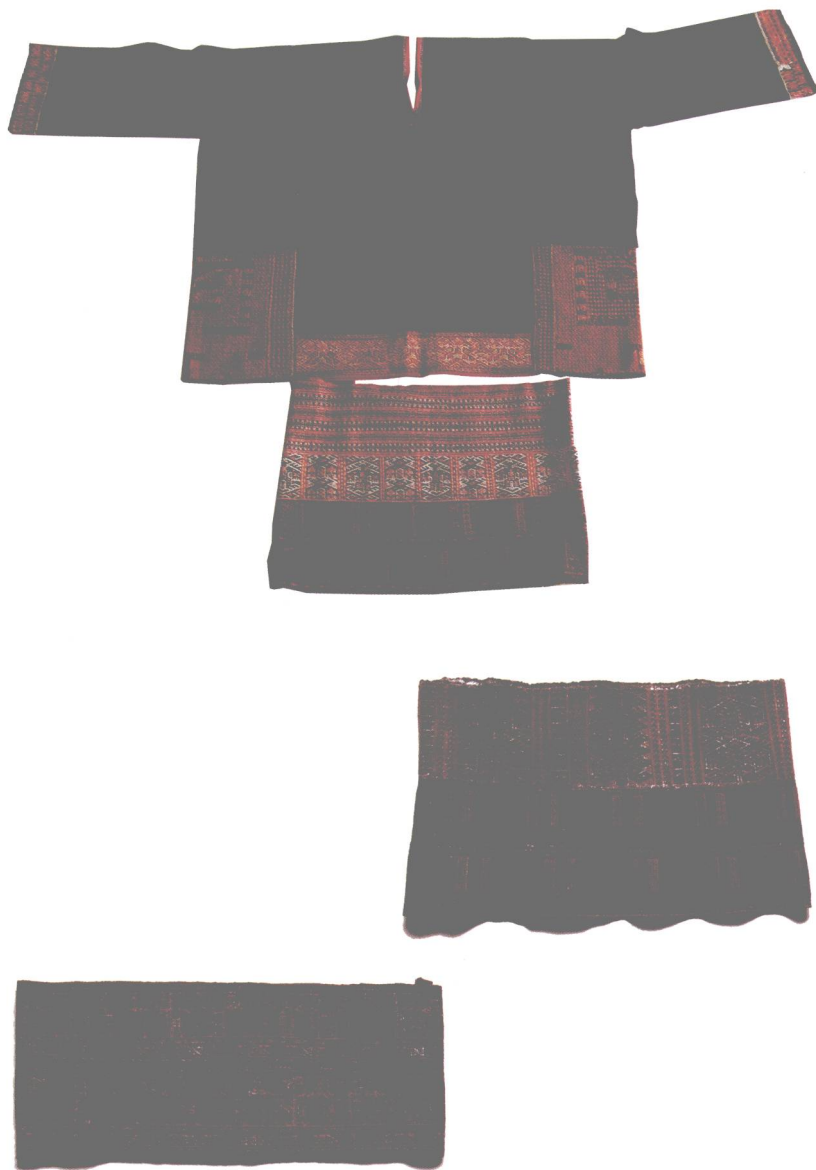
织锦工具 Brocading tools

杞方言黎族妇女织锦照片

THE QI DIALECT REGION BROCADING WOMEN IN SANYA



杞方言织锦 Qi dialect





美孚方言织锦 Meifu dialect

赛方言黎族妇女织锦照片

THE SAI DIALECT REGION BROCADING WOMEN IN SANYA



赛方言织锦 Sai dialect

自然黎族村

NATURAL VILLAGE OF LI PEOPLE

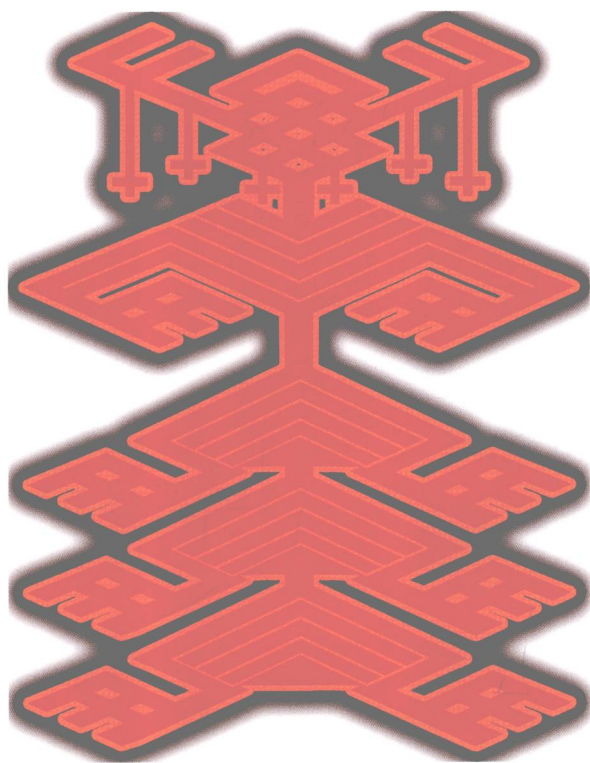
作者和著名雕塑家吴显林在黎村调研



Survey in Li village with famous sculptor Wu Xianlin



Boat-shaped House



人物图案

CHARACTER PATTERN

图案收集 编绘：庞珂

PICTURE COLLECTOR AND COMPILER: PANG KE



人物图案简介

CHARACTER PATTERN

“人纹图案”是以人物为描写对象创造的织锦图案，在五大方言区的黎锦人纹图案中，都各具有一定的代表性。聪明的黎家妇女善于观察人物，准确把握所观察对象的各种形态，并将其织绣为活灵活现的图案，形成了独具一格的民间艺术和民族文化。

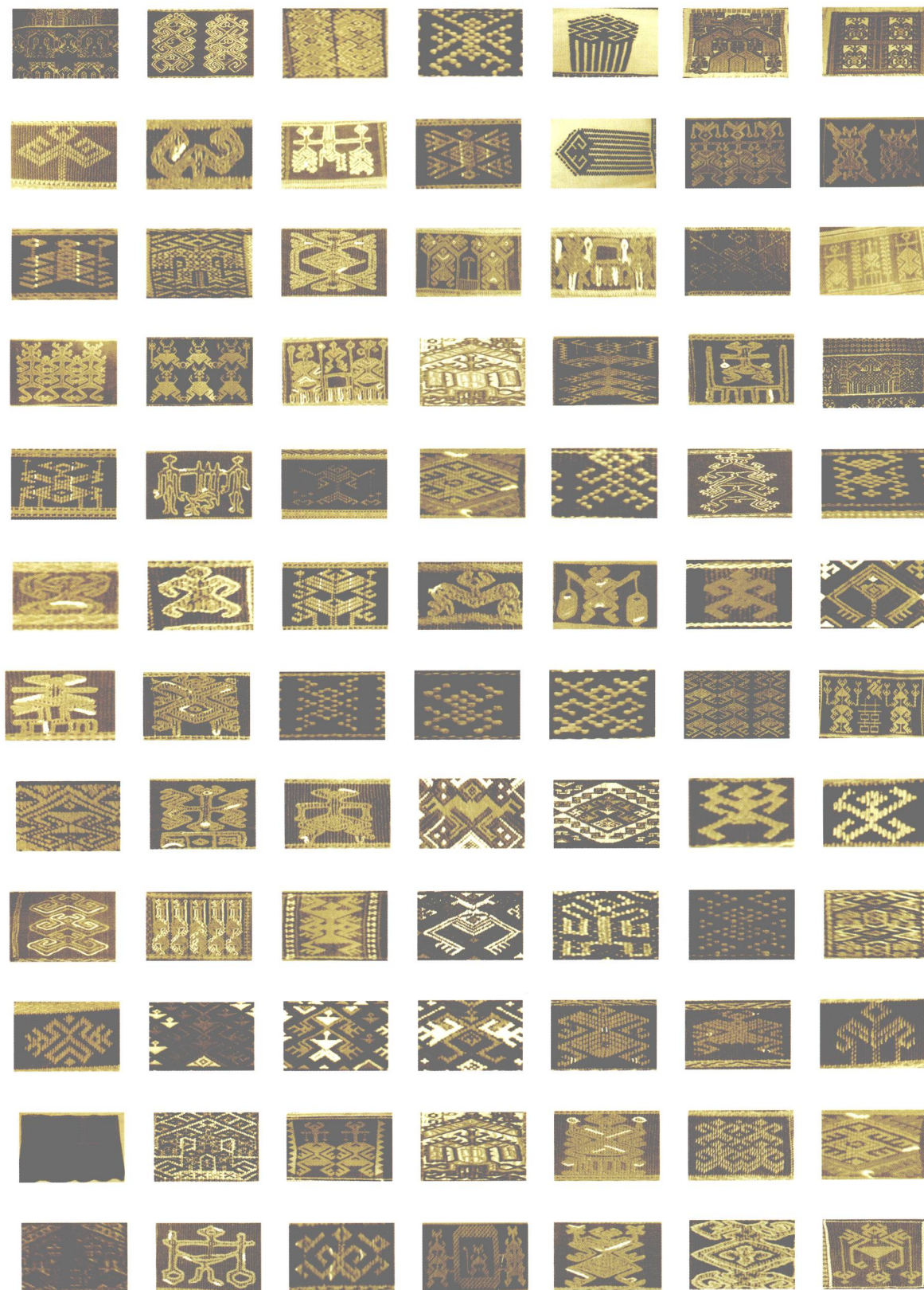
人纹图案所描写的多是人物正面形象，通过肢体语言和夸张的技法，深入地表现人物的思想情感，使图纹既抽象又幽默，既美观又大方，形成黎族人民特有的民族文化符号。如：狩猎图，农耕图、婚庆图、大力神、祭祀图等很多经典图案，都具有较高的艺术性和较深的文化内涵，充分体现了黎家妇女的聪明才智和创造精神。

Character pattern is a brocade pattern with character as the description object, and the Li brocade patterns in five major dialects regions are all representative. The Li women are so smart that they are good at observing human characters, then accurately grasp the various forms of observed objects, and design them as vivid patterns, forming a unique style of folk art and national culture.

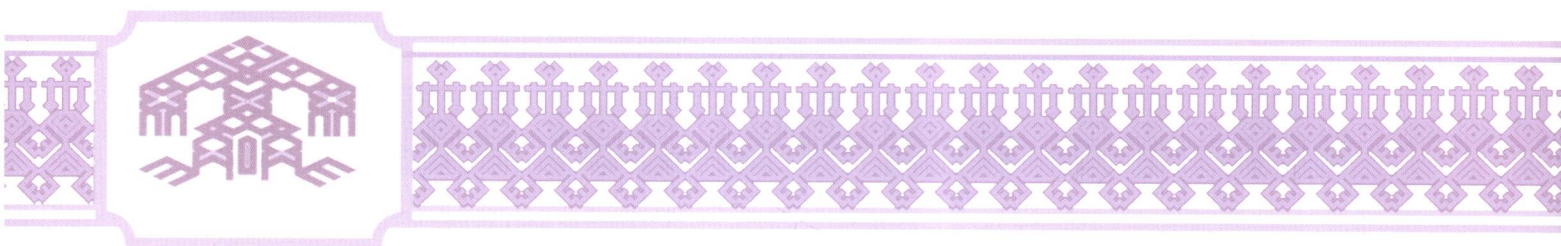
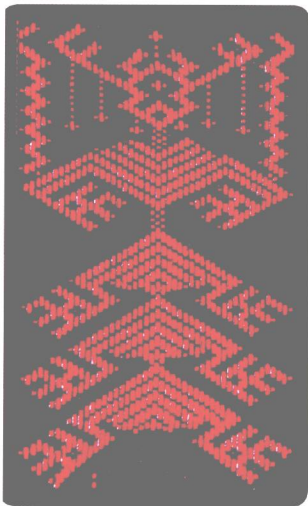
Character pattern describes positive images of the people. Through body language and exaggerated techniques, it demonstrates the people's deep ideas and feelings, which makes the pattern abstract and humorous, beautiful and generous, which form the Li people's unique national culture symbols. Such as hunting picture, agricultural picture, wedding picture, hercules and worship picture are all representative patterns and have a high level of artistry and deep cultural connotation. They fully embody the Li women's ingenuity and creative spirit.

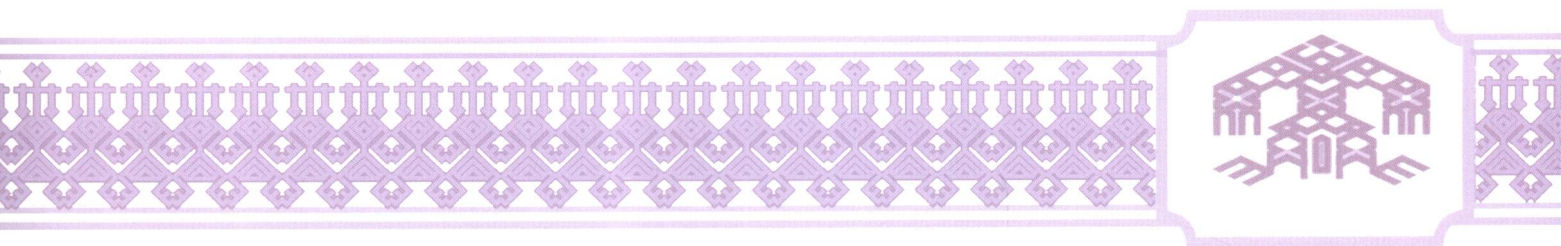
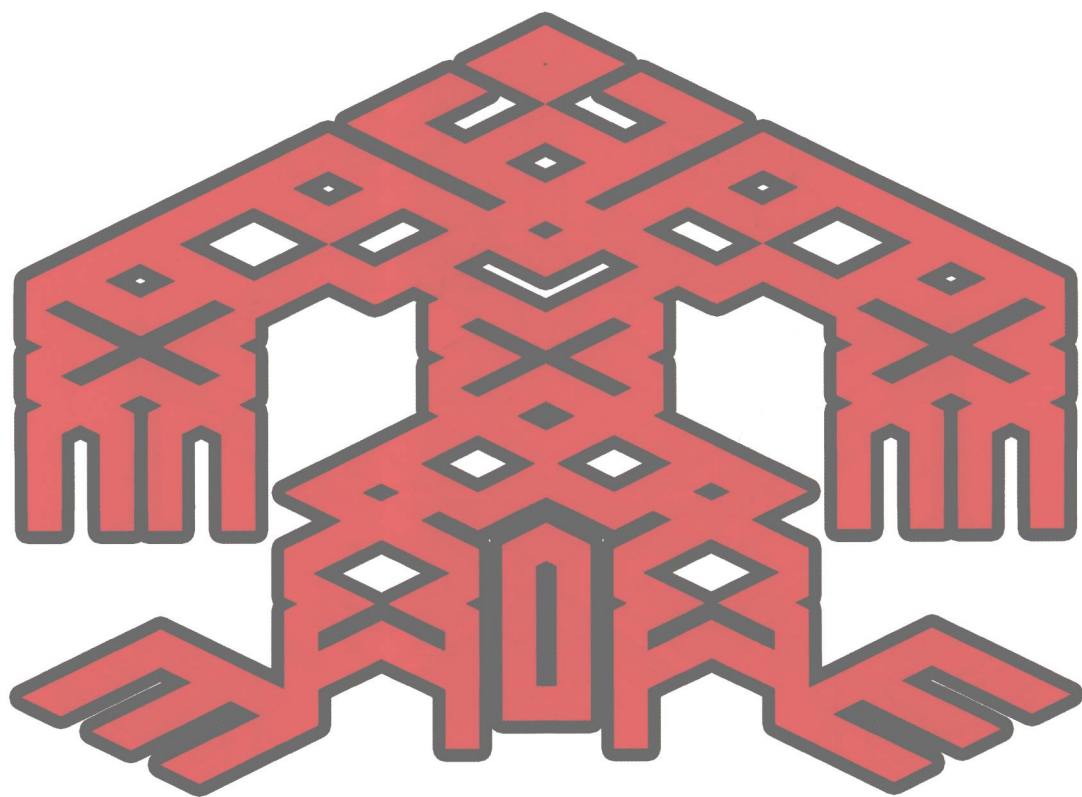
原创织锦拍照图案

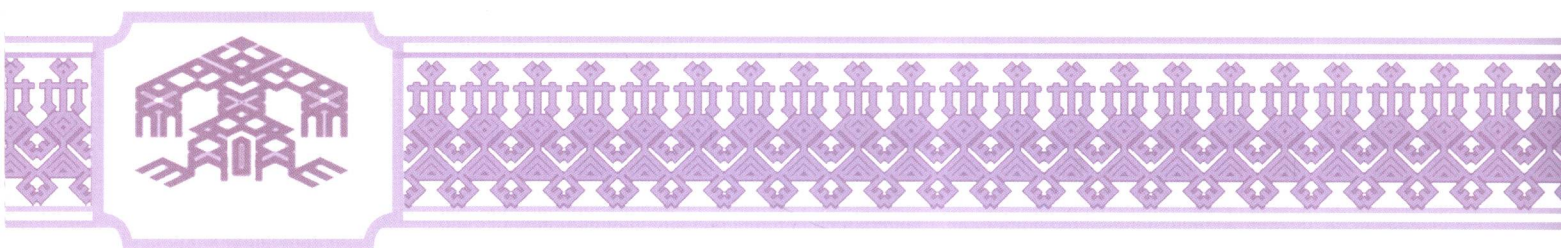
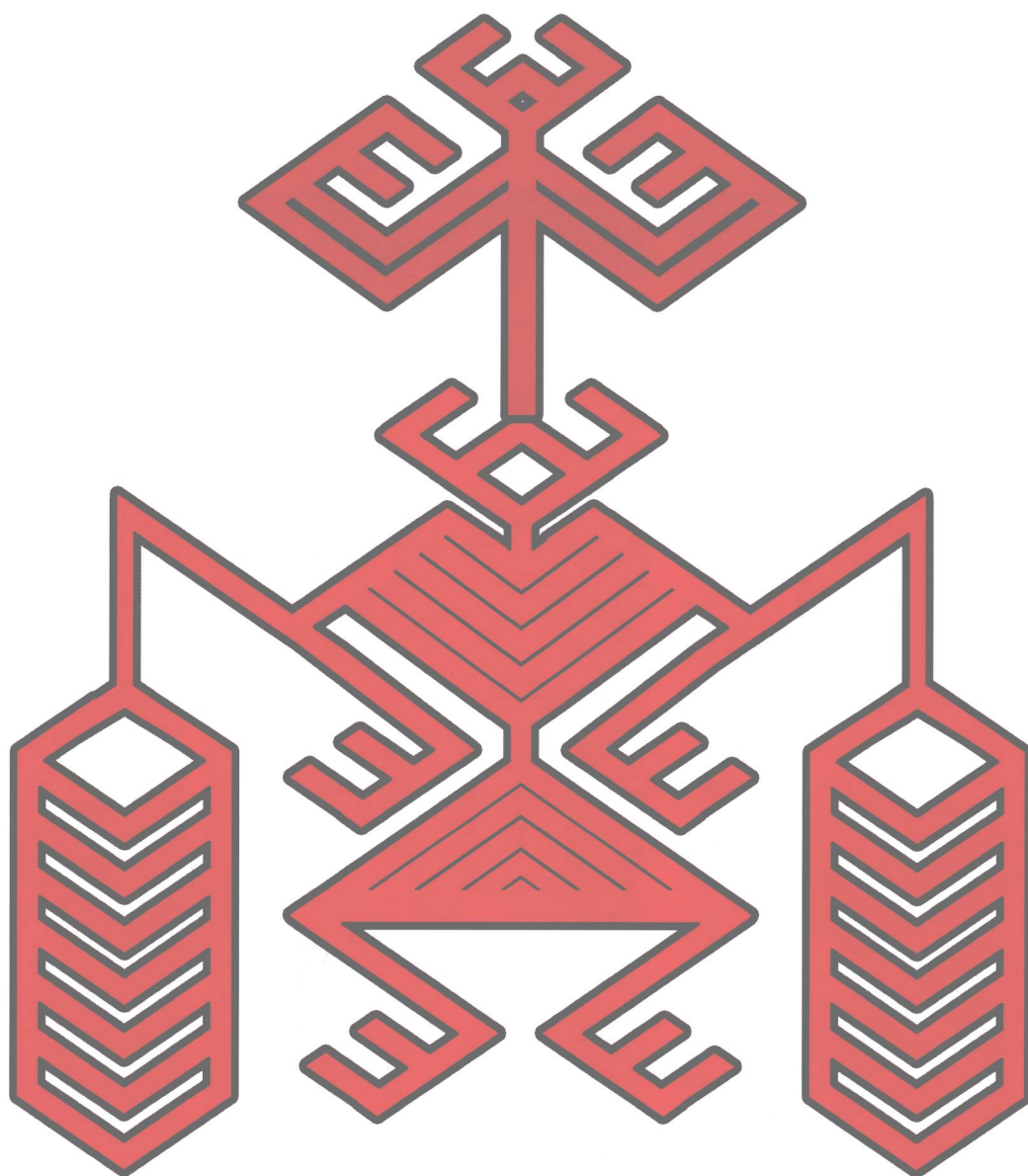
ORIGINAL BROCADE PATTERN PHOTOS

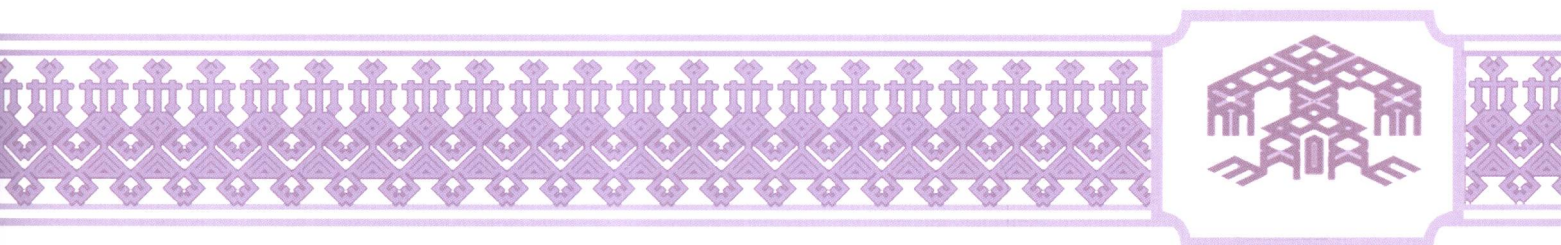
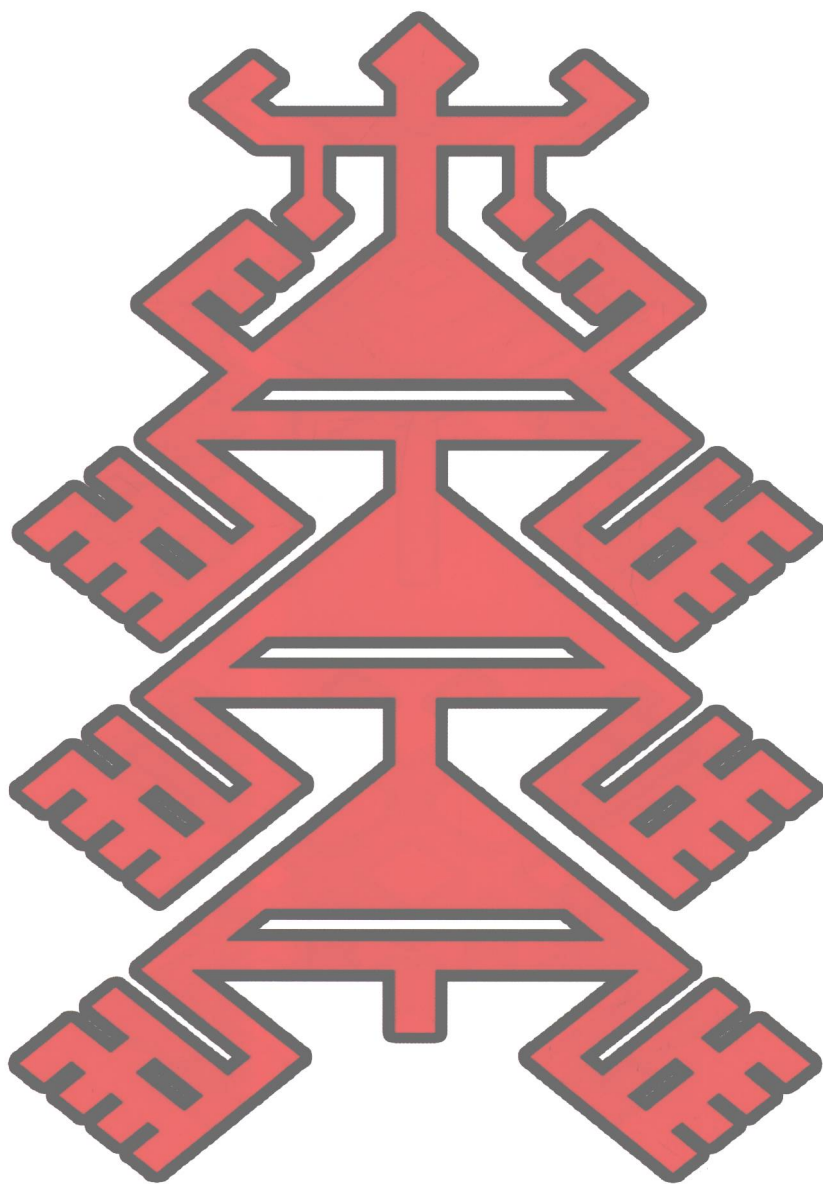


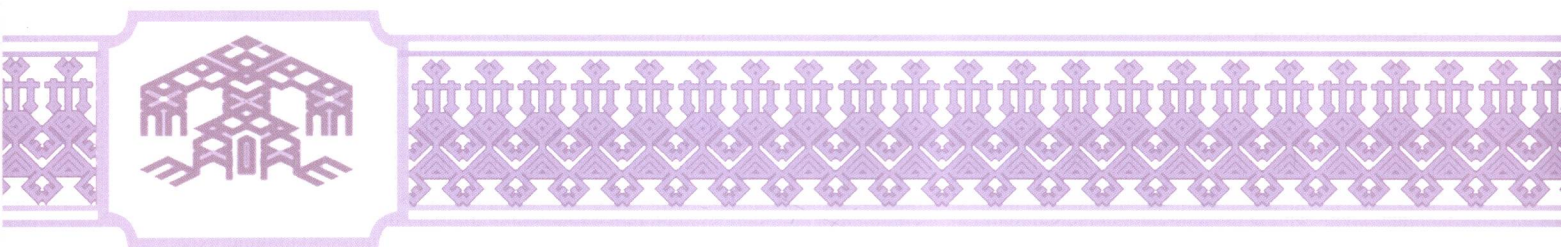
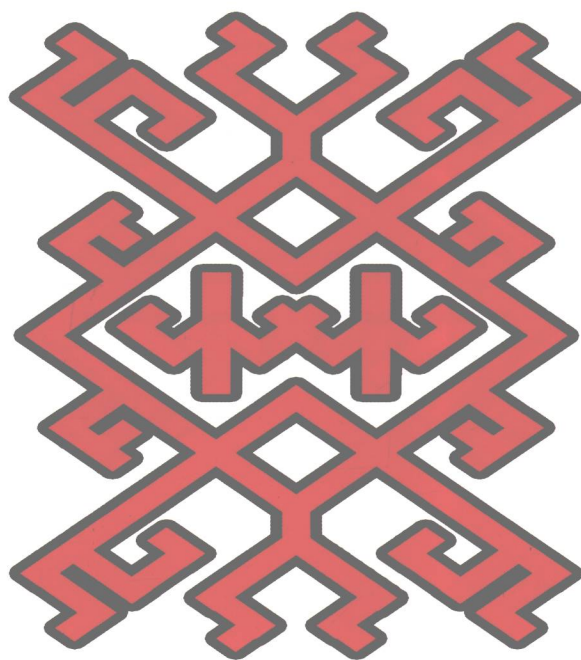
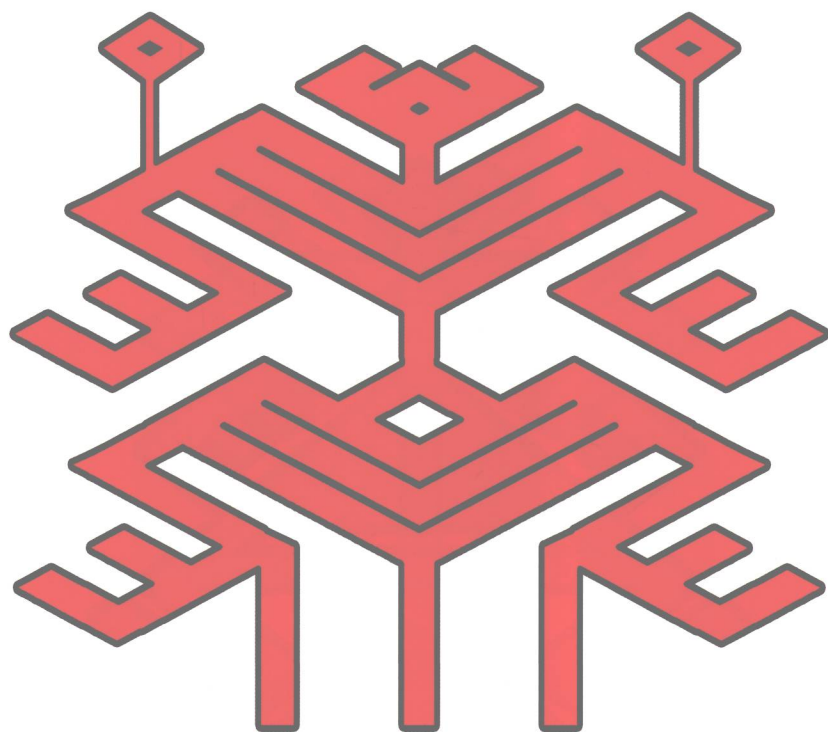
传统黎锦人物图纹精选
FAMOUS TRADITIONAL CHARACTER PATTERNS

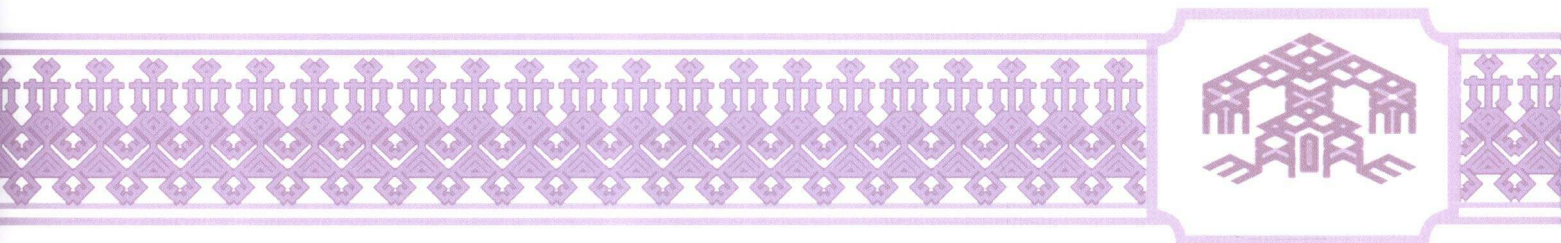
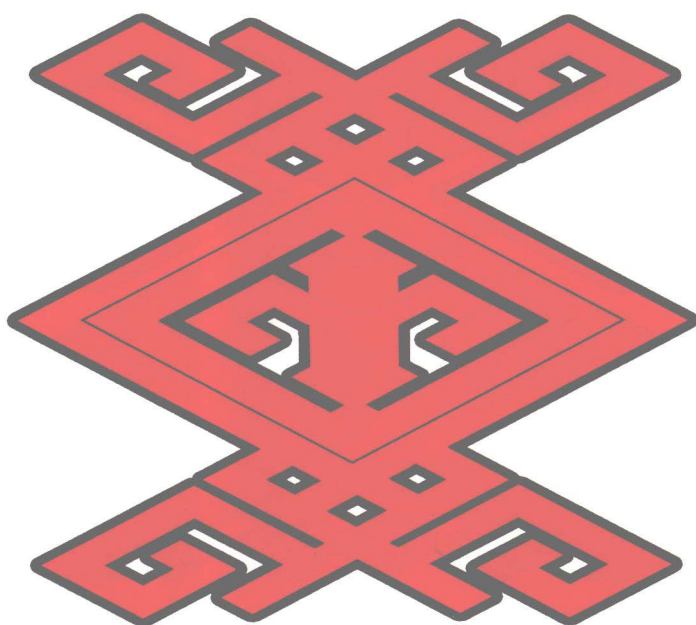
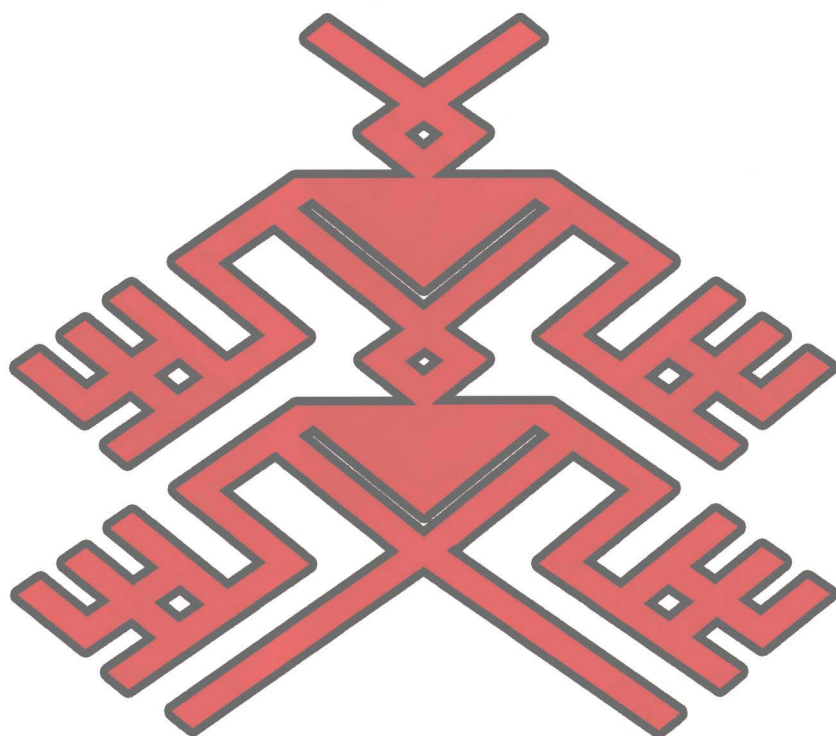












A0962732