

设计有约

享·方峻室内设计作品二



贝思出版有限公司 汇编

inside design

The Design World of **Fong Tsun**

辽宁科学技术出版社

图书在版编目(CIP)数据

设计有约：享·方峻室内设计作品二 / 贝思出版有限公司
汇编.—沈阳：辽宁科学技术出版社, 2011.1
ISBN 978-7-5381-6694-1

I. ①设… II. ①贝… III. ①室内设计—作品集—中国—现代

IV. ①TU238

中国版本图书馆CIP数据核字(2010)第194422号

出版发行：辽宁科学技术出版社
(地址：沈阳市和平区十一纬路29号 邮编：110003)

印 刷 者：广州市一丰印刷有限公司

经 销 者：各地新华书店

幅面尺寸：280mmx280mm

印 张：24

插 页：4

字 数：50千字

出版时间：2011年1月第1版

印刷时间：2011年1月第1次印刷

责任编辑：郭 健

特邀编辑：Cher Yip

封面设计：梁佩琼

版式设计：Cher Yip

责任校对：耿 琢

书 号：ISBN 978-7-5381-6694-1
定 价：298.00元

联系电话：024-23284536, 13898842023
邮购热线：024-23284502
E-mail:rainbow_editor@163.com
http://www.lnkj.com.cn
本书网址：www.lnkj.com.cn/uri.sh/6694

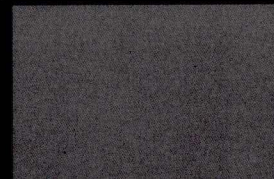
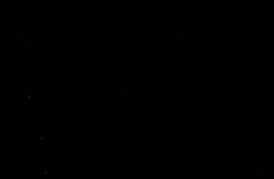
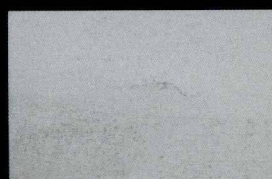
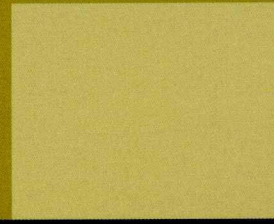
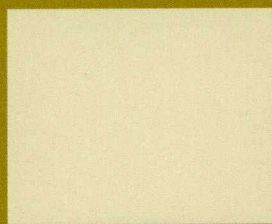
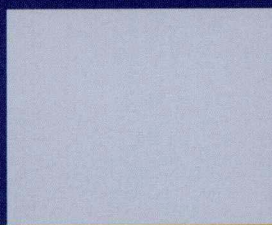
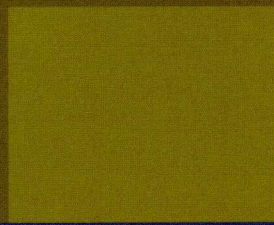
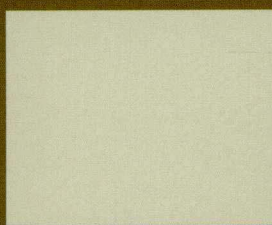
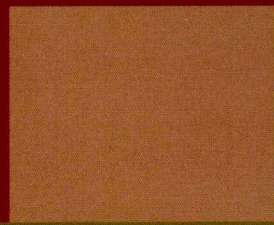
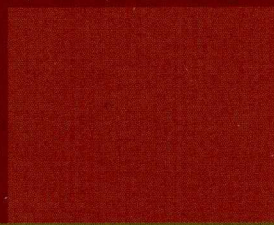
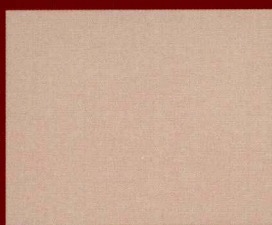
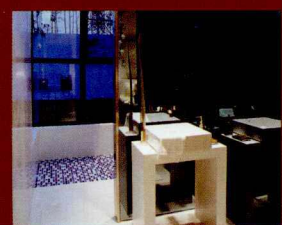
设计有约

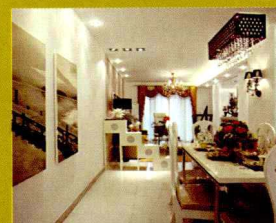
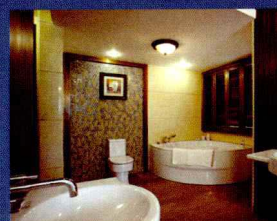
贝思出版有限公司 汇编
曾琳 侯阳 主编
高健 赵耀 译

享·方峻室内设计作品二

inside & design

The Design World of **Fong Tsun**





PREFACE | 序

我认识方峻先生多年，每每相聚时常谈及中国室内设计这个行业，什么理性与感性，什么创作与经营，等等，言行间总带点要负起以“设计兴国”之心。

我认为，对室内设计师而言，最重要的还是在理解设计的含义，以及它与建筑设计的关系，从不同的视角、不同的侧重点来分析。经过多年与国内室内设计师的接触，我觉得“设计元素”一词已成为不少室内设计师的设计负担。

“室内设计”究竟是什么呢？它应该是一门应用科学，设计师必须有功能了解、美学认知这方面的知识；它还综合了视觉环境和工程技术方面的问题，也包括声、光、热等物理环境以及氛围、意境等心理环境和文化内涵等内容。当室内设计师把这些理论知识演变成一项产品，那这项产品的形式语言就必须带有设计师的情感和创造力。

I have known Fong Chun for many years. When we meet, our conversations are always surrounding interior design profession in China, compassion versus logic, innovations versus entrepreneurship, etc. We are obsessed with the indulgence to 'expand the country through interior design'.

For a designer, the core value is to recognize the essence of a design and its relationship to architectural infrastructure through diversified emphasis and dimensions. The contacts with Mainland interior designers over the years have revealed the reality that 'design elements' has become the baggage of a lot of interior designers.

What is 'interior design'? Interior design is an applied science demanding the apprehension of functionality and aestheticism; it collaborates the magnitude of building technologies and visual integrity, and embraces sound, illumination, and warmth in the interpretation of cultural affection, and psychological expressions of ambiance and moods. When an interior designer modes these theoretical wisdom into a product, the product should fully convey the designer's passion and innovation.

与不少发达国家相比较，中国设计师的起步比较迟，很多设计师对于“设计风格”的认知是表面的，认为不管法式、美式抑或英式，只要是眼睛看到的就算是了，殊不知室内设计是一种认知过程，设计的感染力与设计师的情感有着紧密的关系，设计师强烈的创作欲望必将极大地激发出源自自己的生活和 cultural 素质与积淀的创作灵感。例如一名中国设计师将一个具有欧美元素的案例设计出来后，里面却弥漫着中国元素的味道，这就是一种创新。一名无须刻意用风格或元素定格的设计师，他的创作欲望愈强烈，情感愈充沛，则其灵感即呼之欲出，这时的创作设计就是一种享受了。现在的方峻经过多年的国外行走与文化吸收，他已进入到享受设计的阶段。

本书展现了方峻近期的创作，愿大家一起来“享受”他的设计。

林达生 贝思出版有限公司

Comparing to developed countries, Chinese designers are lagged behind in its cradle framework. The perception of 'design personality' tends to be superficial recognizing only visual impacts of the design - be it a French, American, or British temperament. Unfortunately, they have overlooked the fact that interior design is actually a progression of identification that closely intertwines the passion and induction of the designer. The designer's desire for innovative immoderation will trigger the immense manifestation of his own lifestyle, cultural ethnicity, and sophisticated values. It is innovation, for instance for a Chinese designer to infiltrate extensive Chinese elements in a design that carries momentous Euro-American complexity. When a designer is passionate and has a strong indulgence for innovation, he is not bound by pre-set styles or elements, his inspiration and stimulation will be totally released. Actualizing creative design is now a pleasure for him. With years of overseas experience and cultural assimilation, Fong Chun has proudly stridden into the haven of enjoying the delight of designing.

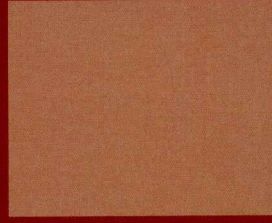
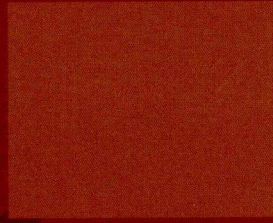
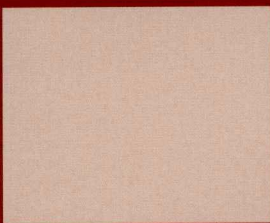
"Inside Design" presents some of Fong Chun's recent works, let's all enjoy the design projects of Fong Chun.

George Lam / Pace Publishing Ltd

CONTENTS | 目录

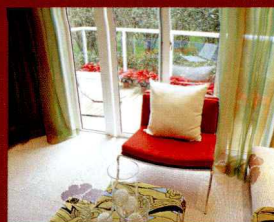
	CREATIVE IDEAS 创意概念篇	P009
	Riviera E1 show flat, OCT Real Estat 华侨城地产·纯水岸E1型示范单位	P010
	Tong Tian River Bank 9A show flat, Tong Tian Real Estate 同天地产·同天绿岸9A型示范单位	P018
	Tong Tian River Bank 3B show flat, Tong Tian Real Estate 同天地产·同天绿岸3B型示范单位	P030
	Kam Town show flat, Land City Real Estate 置都地产·锦镇示范单位	P042
	Town Scape A1 show flat, Grand Real Estate 远大地产·都市风景A1型示范单位	P056
	FURNISHINGS 陈设材料篇	P067
	Shangri Border Town 102 Show flat, Auspicious Sky Real Estate 天祥地产·边城香格里拉102型示范单位	P068
	Shangri Border Town 202 Show flat, Auspicious Sky Real Estate 天祥地产·边城香格里拉202型示范单位	P078
	Show flat A 示范单位1	P088
	Show flat B 示范单位2	P094
	Show flat C 示范单位3	P102
	Town Scape (phase 4) A3B show flat, Grand Real Estate 远大地产·都市风景四期A3B型示范单位	P112
	Town Scape (phase 4) B1 show flat, Grand Real Estate 远大地产·都市风景四期B1型示范单位	P118
	Town Scape (phase 4) B2 show flat, Grand Real Estate 远大地产·都市风景四期B2型示范单位	P124
	Town Scape (phase 4) D2 show flat, Grand Real Estate 远大地产·都市风景四期D2型示范单位	P130
	PLAN 平面规划篇	P137
	Town Scape (phase 3) duplex show flat, Grand Real Estate 远大地产·都市风景三期跃层式样板房	P138
	Superstructure show flat, Bo Yuan Real Estate 博远地产·上层建筑住宅示范单位	P148
	Private Residence at Jincheng Heights 锦城豪庭私邸	P156
	Private Residence at Shui-Ying Long Island 水映长岛私邸	P168
	Evian Town H show flat, Zhongnang Real Estate 中能地产·依云镇H型示范单位	P178
	Evian Town J show flat, Zhongnang Real Estate 中能地产·依云镇J型示范单位	P188
	Evian Town duplex show flat, Zhongnang Real Estate 中能地产·依云镇叠层别墅示范单位	P196
	Reflection Island Estate A1 show flat, Dahua Real Estate 大华地产·水映岛A1型示范单位	P208
	LIGHTING & COLOR 色彩灯光篇	P219
	Riviera D1 show flat, OCT Real Estate 华侨城地产·纯水岸D1型示范单位	P220
	Riviera F3 show flat, OCT Real Estate 华侨城地产·纯水岸F3型示范单位	P228
	Tong Tian River Bank 3A show flat, Tong Tian Real Estate 同天地产·同天绿岸3A型示范单位	P234
	Tong Tian River Bank E show flat, Tong Tian Real Estate 同天地产·同天绿岸E型示范单位	P246
	SUPPLEMENT 别篇	P252

reative



CREATIVE IDEAS | 创意概念篇

ideas



78m²

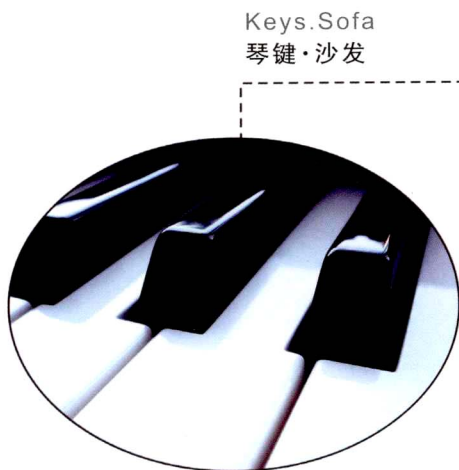
华侨城地产·纯水岸E1型示范单位

摄影 ▲王剑林

现代风格、简约设计成为年轻大众新宠而历经十年不变——黑白色调的运用,不锈钢的质感、灰镜的光泽都强调了简约的精致与品位,增强了现代室内居住的风格趋向。这个单元的面积不大,用现代的简洁因素来设计再适合不过。整个空间装饰上以黑白搭配带出强烈的对比——白的墙面与家具,灰黑色的镜面与深调的墙纸、窗帘搭配简单而高贵。

客厅、餐厅的分割在天花板上得到了很好的体现,独树一帜的客厅天花也成为设计的亮点之一。通而不透的厨房与书房相邻而居,中间以灰黑镜面相隔,使得空间无形地增大,但并不影响各个空间功能的使用。书房的设计小巧而别致,书桌巧妙地运用了飘窗的位置,旁边雅致的沙发与茶几是看书、休憩的绝佳一隅。主人房与男孩房的设计截然不同,主人房延续了房子简约的设计风格,整体格调简洁而雅致;而男孩房却动感十足,镜墙的运用使狭小的空间顿然开朗,空间倍增。

现代风格的装修以对比色和比较简单的家具组合为特色,不同的造型和不同色彩的搭配也体现出不同的韵味。



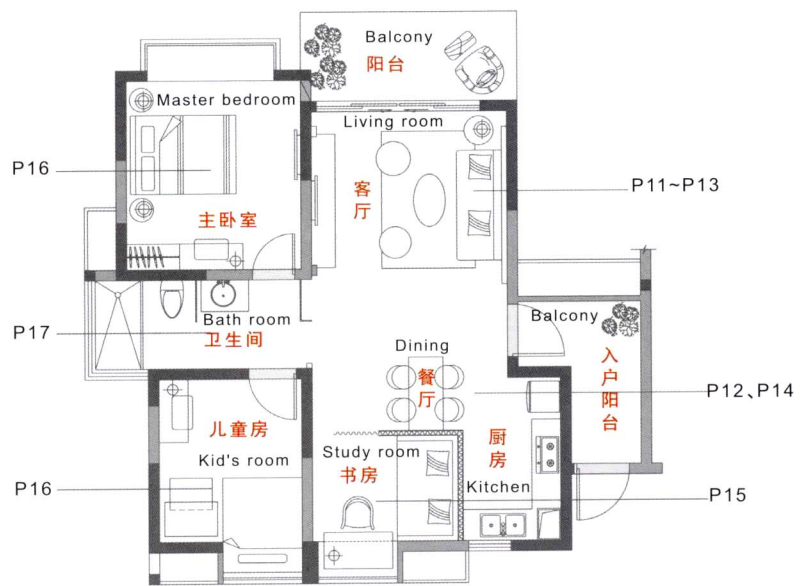
Riviera E1 show flat, OCT Real Estate

The contemporary expression of minimalism in the E1 show flat of the Riviera (OCT Real Estate) reveals what the young generation craves for in this decade. From the application of contrasting black and white to the mood of stainless steel and the translucency of tinted glass, the articulation and taste of simplicity fully demonstrates the modern interpretation of home designs. Contemporary minimalism is the perfect fit for this home of modest size. The entire internal space is exemplified by the dramatic contrast of black and white - white walls and furniture are diverged against grayish black tinted glass, the wallpapers and draperies of intensive tones. These elements are coordinated to deliver a touch of simplistic elegance.

Using the ceiling as spatial division between the living and dining rooms, the unique ceiling at the living room draws focal attention to the design. A grayish black tinted glass is erected to partition the adjoining kitchen and study room to maximize spatial magnitude while maintaining the functionality of individual spaces. The compact study room wittily deploys the bay window to furnish an elegant sofa and side table making it an ideal spot for reading and leisure. Featuring unique personalities, the master bedroom extends the minimalist design of the residence to promote simplistic and elegant living while the boy's bedroom speaks for vibrancy and vitality. Mirrored walls are generously applied to magnify the spatial dimension of the compact environment.

Characterized by contrasting colors and minimalist furniture and fixtures, contemporary designs deliver a variety of ambiances through a magnitude of styles and color coordination.





Layout plan
平面布置图







