

The background of the cover is a photograph of a large, abstract sculpture made of bright red, triangular and polygonal plates. The sculpture is set in a dark, industrial-looking space with concrete walls and a wooden floor. The lighting is dramatic, highlighting the sharp edges and surfaces of the red structure.

HIGHLIGHT

COMMERCIAL SPACE

商业空间

Design & Vision 工作室 编

大连理工大学出版社
Dalian University of Technology Press

HIGHLIGHT

COMMERCIAL SPACE

商业空间

Design & Vision 工作室 编

大连理工大学出版社
Dalian University of Technology Press

图书在版编目(CIP)数据

商业空间: 汉、英 / Design & Vision 工作室编. —
大连: 大连理工大学出版社, 2011.3

ISBN 978-7-5611-6022-0

I. ①商… II. ①D… III. ①商业—服务建筑—室内设计—作品集—世界—现代—汉、英 IV. ①TU247

中国版本图书馆CIP数据核字(2011)第017092号

出版发行: 大连理工大学出版社

(地址: 大连市软件园路80号 邮编: 116023)

印 刷: 利丰雅高印刷(深圳)有限公司

幅面尺寸: 210mm × 285mm

印 张: 19

插 页: 4

出版时间: 2011年3月第1版

印刷时间: 2011年3月第1次印刷

责任编辑: 初 蕾

责任校对: 仲 仁

装帧设计: 连 帅

ISBN 978-7-5611-6022-0

定 价: 248.00元

电 话: 0411-84708842

传 真: 0411-84701466

邮 购: 0411-84703636

E-mail: designbook@yahoo.cn

URL: <http://www.dutp.cn>

如有质量问题请联系出版中心: (0411) 84709043 84709246



HIGHLIGHT

COMMERCIAL SPACE

CONTENTS

RETAIL

- 008 Faberge Salon
- 016 DURAS Daiba
- 022 Rolls
- 032 LONGCHAMP Flash Shop
- 038 Theurel & Thomas
- 044 OHWOW Book Club
- 046 Octium Jewelry
- 054 Joseph's Flagship Store
- 058 T-magi Tea Shop
- 064 Lik+Neon Shop
- 070 24 Issey Miyake

- 074 Boa Hairdressers Salon
- 078 Nike Sportswear's Stadium
- 082 Power Plant

RESTAURANT

- 090 United Coffee House
- 102 Griffins' Steakhouse
- 108 Beijing Noodle No.9
- 114 Ella Dining Room & Bar
- 122 Pearls & Caviar

HOTEL&OFFICE

128 Rootz

134 Nobu Restaurant

138 Nautilus Project

146 BANQ

156 Museum of Art Cafe

162 The Wright

170 Vanity

180 Sliver Restaurant

184 Hatched

188 Bella Pasta

194 Scarlett Cafe

200 Design Bar

210 Tokyo Baby Cafe

220 Casiraghi Gorizia Mediatheque

234 Reval Hotel Sonya

246 Novotel Tower Bridge

254 Hotel Barcelo Raval

264 Miami Blue Suite

270 Tree Line Suite

276 Punk Rock Suite

282 Myer

286 Cogeco Headquarters

290 Kaleidoscope



RETAIL

Designer: Jaime Hayon
Client: Faberge
Photography: Nienke Klunder
Total area: 250 m²

Faberge Salon



The boutique expresses a world of luxury, importance and elegance as originally but through a design language that is more approachable, lightly enjoyable, and bright and unbelievably etiquette. There is a great presence of intimidation as you are approaching the full height interconnecting doors with the tinted glass of cut out gem-shaped panels. Through this gem panel pattern designer has successfully retained natural day light coming through the interior and glorifying it.

The interior has a very different feel. Not intimidating once you are inside, but inviting and jewel like sparkling. All finishes are the most elite and most sought after materials such as Carrara marble, rare woods and silk wall drapes. These finishes in combination with the highest skill in craftsmanship and an excellence in detailing are what make the experience what it is.

The furniture is typical of Hayon's signature with wooden finishes that are quite precious. The same applies for all lighting fixtures. The ceiling pendants follow this clean modern cut design with a hint of old world and glamour through their metallic shine. The silvered metallic shades express the luxurious element and retain the aspect of the organic design. These features contribute to the boutique's old meets mod and mod respects old.





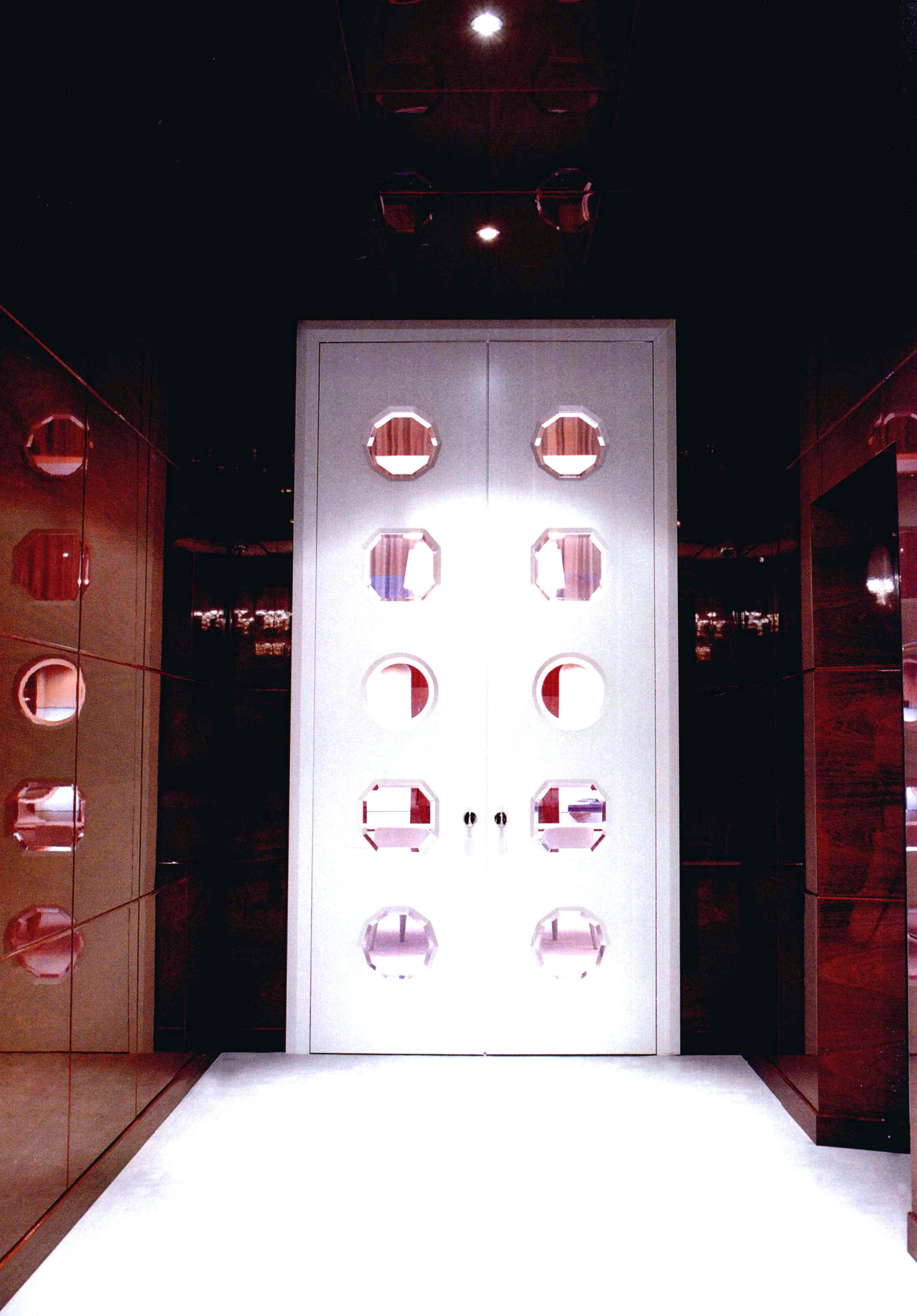


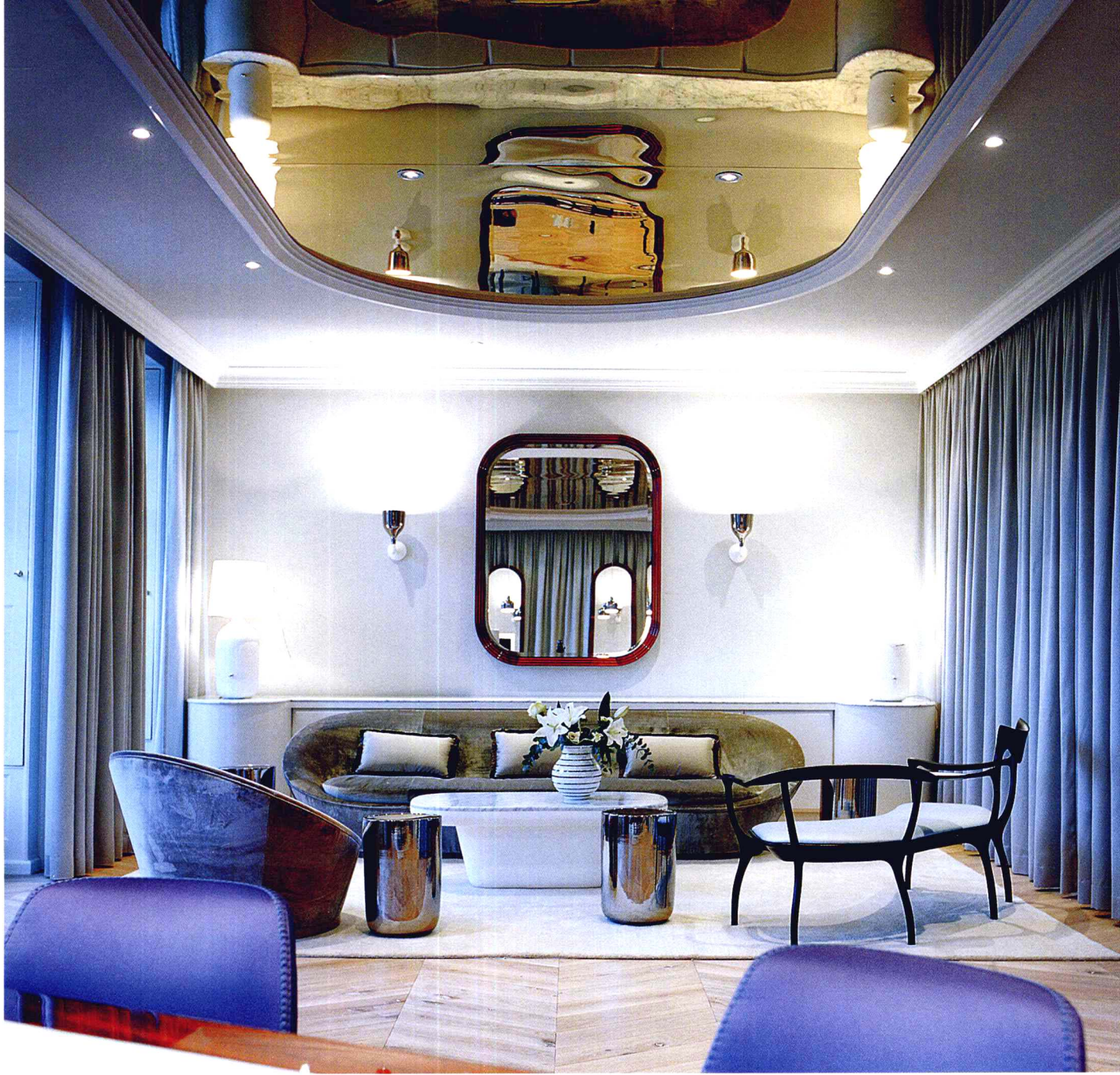
The luxury is successfully incorporated in the space by the mirrored ceiling. Nothing is more high jewellery and erotic than a mirrored ceiling. The idea that all these exquisite finishes are interpreted twice makes you ecstatic and allured. Visualize a grand dame of Chanel origin with her black hat of feathers trying on a glorified diamante ring and reflecting its unique cut on the ceiling. This is exactly how these jewels are meant to be adored.

设计师以平和的、轻盈的、令人愉快的设计语汇营造了奢华、雅致的氛围。入口处通高的大门上装饰着宝石形状的开洞，其中镶嵌的彩色玻璃使室内的自然光线透射出来。内部空间所用的装饰材料十分精致，包括白色大理石、稀有的木材和丝制的帷幔。这些材料搭配上高级手工工艺和细部设计，迎合了珠宝熠熠生辉的本质。使用木制家具是这位设计师的鲜明特色，与之相对的是银色的金属灯具和突显奢华感的镜面天花。通过这些元素，设计师将传统与现代的对比完美融合在空间中。









Designer: Chikara Ohno \ sinato

Client: DURAS Inc.

Photography: Takumi Ota

Total area: 126.76 m²

DURAS Daiba

