

陝
西



出土
青銅器

BRONZES
FROM
NORTHERN SHAANXI

0000 0001 0002 0003 0004 0005 0006 0007 0008 0009 0010 0011 0012 0013 0014 0015 0016 0017 0018 0019 0020 0021 0022 0023 0024 0025 0026 0027 0028 0029 0030 0031 0032 0033 0034 0035 0036 0037 0038 0039 0040 0041 0042 0043 0044 0045 0046 0047 0048 0049 0050 0051 0052 0053 0054 0055 0056 0057 0058 0059 0060 0061 0062 0063 0064 0065 0066 0067 0068 0069 0070 0071 0072 0073 0074 0075 0076 0077 0078 0079 0080 0081 0082 0083 0084 0085 0086 0087 0088 0089 0090 0091 0092 0093 0094 0095 0096 0097 0098 0099

4

編者 陝西省考古研究院
主編 曹璋 四川出版集團

巴蜀書社



主編 曹璋

陝北出土青銅器

編著 陝西省考古研究院

第四卷

四川出版集團
巴蜀書社
2009·成都



Edited by CAO WEI

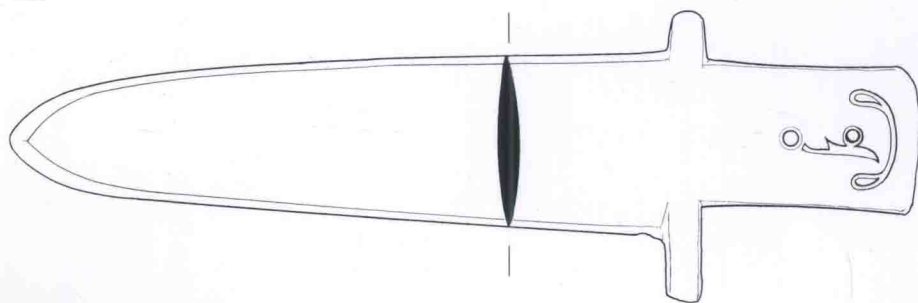
**BRONZES
FROM NORTHERN
SHAANXI**

Written by Shaanxi Institute of Archaeology Research

VOLUME IV

**BASHU PUBLISHING HOUSE
SICHUAN PUBLISHING GROUP**

2009 · CHENGDU



0 2.0cm


戈 (陝歷博七二224)

商代晚期

1965年出土於陝西省綏德縣義合鎮塢頭村

現藏於陝西歷史博物館

通長24.3cm、闌長7.6cm，重量368g

長援弧形脊，有闌，短內。內中部有一圓穿，後端飾一徽號.

Ge

Late Shang Period

Discovered in 1965 at Yantoucun, Yihe, Suide County, Shaanxi Province

Shaanxi History Museum, Xi'an

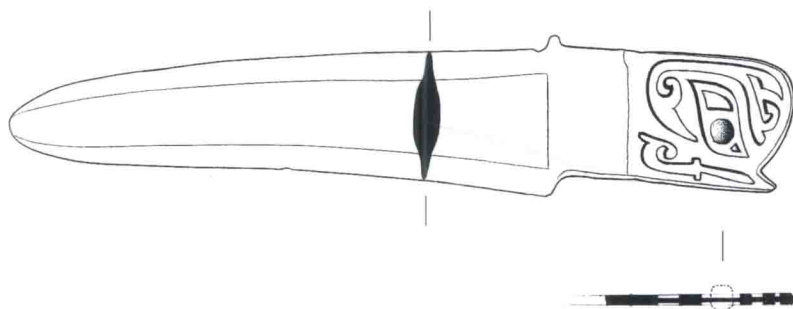
Length 24.3 cm, length of guard 7.6 cm, weight 368 g

The ge has a triangular blade with a midrib and a rectangular tang with a circular perforation. The blade and the tang are separated by two small vertical protrusions. An animal face marked by raised ribbons is decorated the end of the tang.





反面



0 2.5cm

直内戈（綏德324）

商代晚期

1978年於陝西省綏德縣榆林地區農副公司廢品庫房揀選

現藏於陝西省綏德縣博物館

通長27.3cm、闌長5.1cm，重量367g

長援寬脊，有闌。內端有倒刺。內上飾獸面紋。

Ge

Late Shang Period

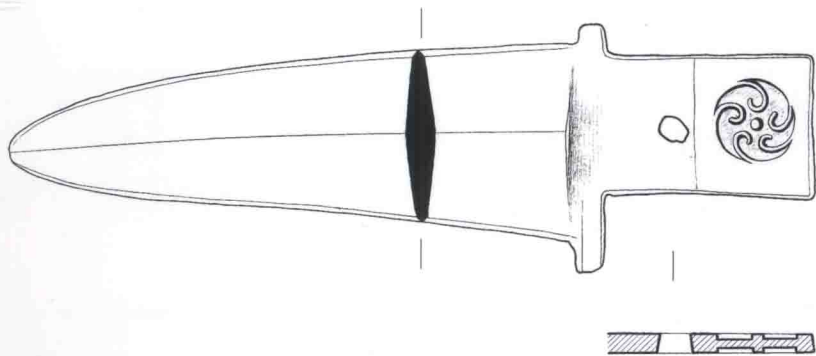
Selected in 1978 from a waste station of the Cooperation of Agricultural and Other Related Products of Yulin Administrative Region, Suide County, Shaanxi Province

Suide County Museum, Shaanxi Province

Length 27.3 cm, length of guard 5.1 cm, weight 367 g

The triangular blade of this ge has a prominent raised midrib. The blade is distinguished from a rectangular tang by a small protrusion at the top. A raised eye motif decorates the end of the tang, featuring a curved end and a "V" shaped notch.





0 2.3cm

直內戈（綏德362）

商代晚期

1957年陝西省綏德供銷聯合社廢品收購站揀選

現藏於陝西省綏德縣博物館

通長24.0cm、闌長7.4cm，重量390g

長援菱形脊，有闌，中內。內中部有一圓穿，內端飾一火紋。

Ge

Late Shang Period

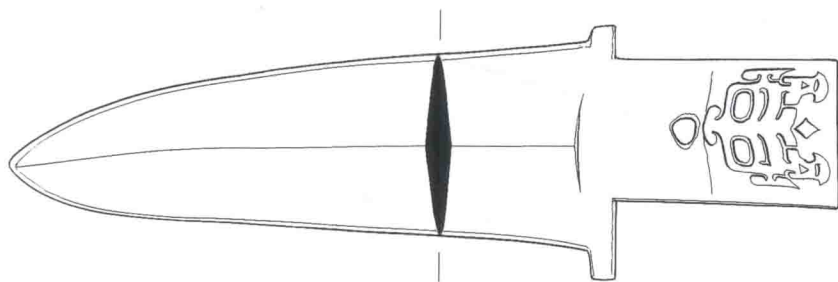
Selected in 1957 from a waste collection station of the Supply and Marketing Cooperative of Suide County, Shaanxi Province

Suide County Museum, Shaanxi Province

Length 24.0 cm, length of guard 7.4 cm, weight 390 g

The triangular blade of this *ge* has a midrib extending to a junction of two short protrusions meeting with a rectangular tang with a circular perforation. Raised scrolls against a sunken background are depicted at the end of the tang.





0 2.5cm

獸面紋戈（陝歷博09）

商代晚期

1974年出土於陝西省綏德縣崔家灣鄉後任家溝村

現藏於陝西歷史博物館

通長27.0cm、闌長7.4cm、重量315g

長援，菱形脊，有闌，中內。內中部有一穿，內端有一獸面。

Ge

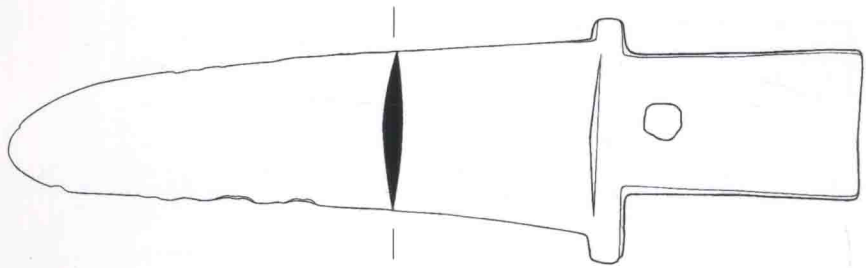
Late Shang Period

Discovered in 1974 at Hourenjiagoucun, Cuijiawan, Suide County, Shaanxi Province - Shaanxi History Museum, Xi'an

Length 27.0 cm, length of guard 7.4 cm, weight 315 g

This ge has a triangular blade with a raised mid-rib and a rectangular tang with a circular perforation. An indented animal face marked by raised eyes, eye brows, and a pair of bottle shaped horns is depicted at the end of the tang. The junction between the blade and the tang is marked by two short rectangular projections on both edges.





0 2.3cm

直内戈 (子長14)

商代晚期

1947年出土於陝西省子長縣澗峪岔鄉李家塌村

現藏於陝西省子長縣文管所

通長26.0cm、刃寬5.8cm，重量363g

長援弧形脊，有闌，內前端有一圓穿。

Ge

Late Shang Period

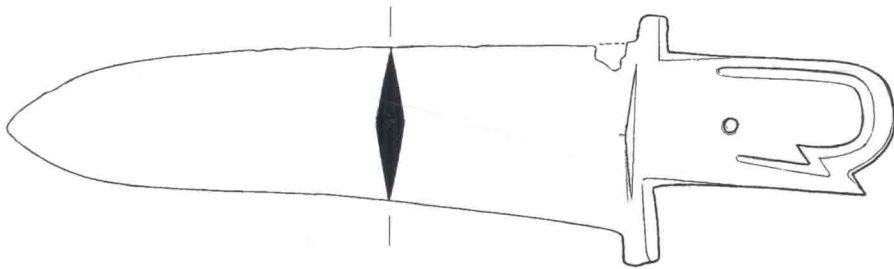
Discovered in 1947 at Lijiatacun, Jianyucha, Zichang County, Shaanxi Province

Cultural Relics Administration of Zichang County, Shaanxi Province

Length 26.0 cm, width of blade 5.8 cm, weight 363 g

This *ge* has a triangular blade and a rectangular tang with a circular perforation. The junction between the blade and the tang is marked by two short rectangular projections on both edges.





0 1.8cm

直内戈（甘泉8）

商代晚期

出土於陝西省甘泉縣下寺灣鎮下寺灣村寺峁子

現藏於陝西省甘泉縣博物館

通長21.2cm、刃寬4.5cm，重量210g

長援菱形脊，有闌，短內。內中部有一圓穿，後端有倒刺。

Ge

Late Shang Period

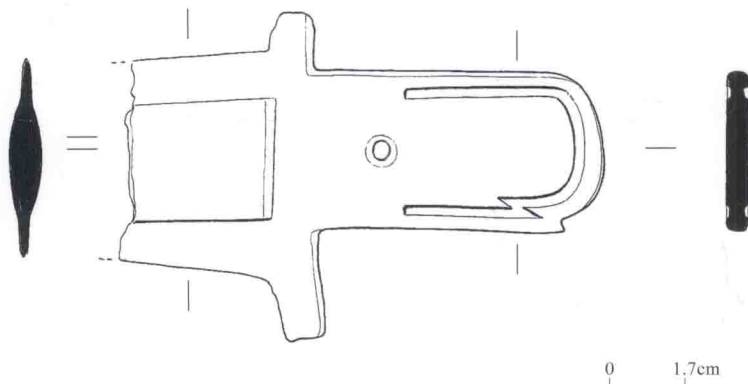
Discovered at Simaozi, Xiasiwancun, Xiasiwun, Ganquan County, Shaanxi Province

Ganquan County Museum, Shaanxi Province

Length 21.2 cm, width of blade 4.5 cm, weight 210 g

This ge has a triangular blade of a midrib and a rectangular tang with a curved end and a small “V” shaped notch. A sunken line runs along the rim of the tang matching the shape of the end of the tang. Two small vertical projections separate the blade from the tang.





直內戈（甘泉749）

商代晚期

2005年出土於陝西省甘泉縣下寺灣鎮下寺灣村閻家溝

現藏於陝西省甘泉縣博物館

殘長10.7cm、殘重158g

援部殘斷，有闌，中內，內部有圓穿，內後端有倒刺。

Ge

Late Shang Period

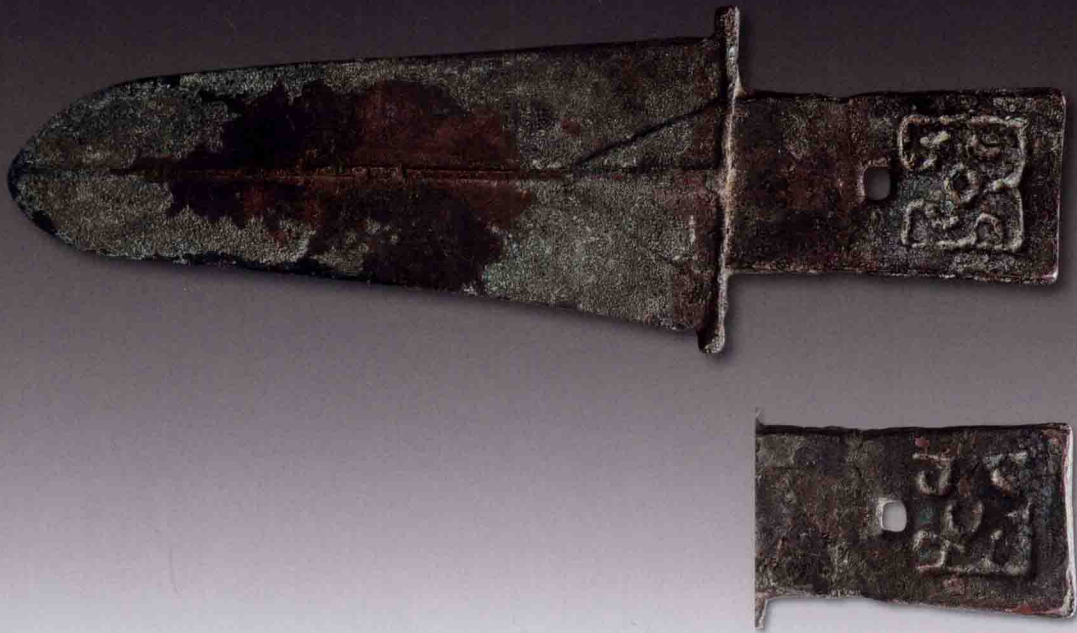
Discovered in 2005 at Yanjiagou, Xiasiwancun, Xiasiwan, Ganquan County, Shaanxi Province

Ganquan County Museum, Shaanxi Province

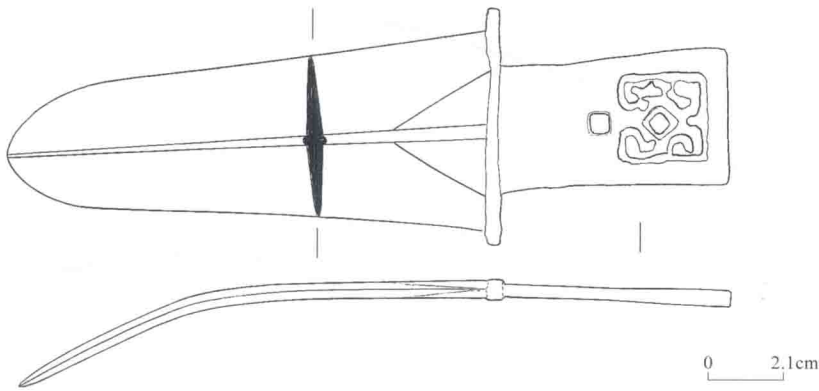
Remaining length 10.7 cm, weight 158 g

A large portion of the blade of this *ge* is broken. Two vertical rectangular protrusions mark the junction between the blade and the rectangular tang with a circular perforation. The end of the tang is slightly curved forming a notch at one end. An incised line runs along the rim of the tang.





反面紋飾



直内戈（綏德138-1）

商代晚期

1980年出土於陝西省甘泉縣城關鎮關家溝

現藏於陝西省綏德縣博物館

通長20.1cm、闌長6.6cm、重量255g

長援，菱形脊上有凸棱，有闌，內中部有一方穿。內端有方形紋飾。

Ge

Late Shang Period

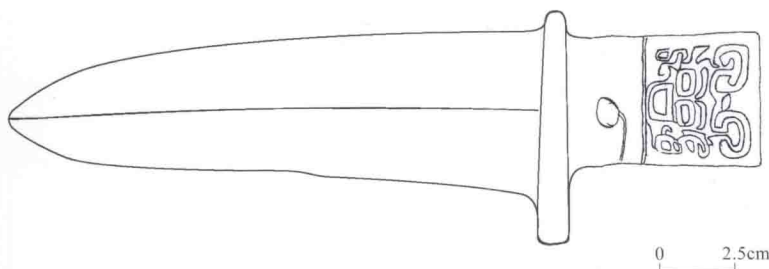
Discovered in 1980 at Guanjiagou, Chengguan, Ganquan County, Shaanxi Province

Suide County Museum, Shaanxi Province

Length 20.1 cm, length of guard 6.6 cm, weight 255 g

The triangular blade of this *ge* is marked by a prominent ridge in the center. Two additional ridges rise diagonally from the central ridge at the base of the blade. The rectangular tang is separated from the blade at the junction defined by two small projections. At the end of the tang is a square design in relief composed of a round motif in the center and four curved extensions at each corner. A square perforation is next to the design.





直内戈（延川8）

商代晚期

1983年出土於陝西省延川縣稍道河鄉去頭村

現藏於陝西省延川縣文化館

通長25.0cm，重量427g

長援，菱形脊，有闌，短內近闌處有一穿。內端飾獸面。

Ge

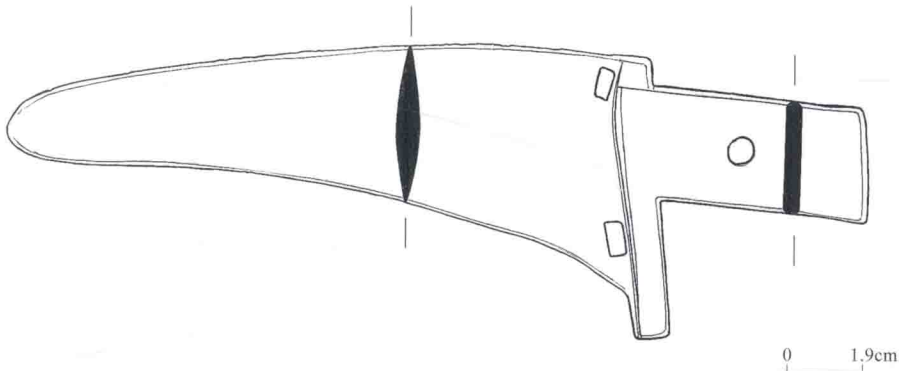
Late Shang Period

Discovered in 1983 at Qutoucun, Shaodaohe, Yanchuan County, Shaanxi Province
Cultural Center of Yanchuan County, Shaanxi Province

Length 25.0 cm, weight 427 g

This *ge* has a triangular blade with a visible mid-rib and a rectangular tang (now broken) with an irregular perforation. An indented animal face composed of a mouth, eyes and eyebrows, and a pair of horns is depicted at the end of the tang. The junction between the blade and the tang is marked by two short rectangular projections on both edges.





直内戈（綏德139-1）

西周早中期

1960年於陝西省綏德供銷聯合社廢品收購站揀選

現藏於陝西省綏德縣博物館

通長21.2cm、闌長9.3cm，重量227g

長援弧形脊，短胡，中內。闌側兩穿，內部一圓穿。

Ge

Early to Middle Western Zhou Period

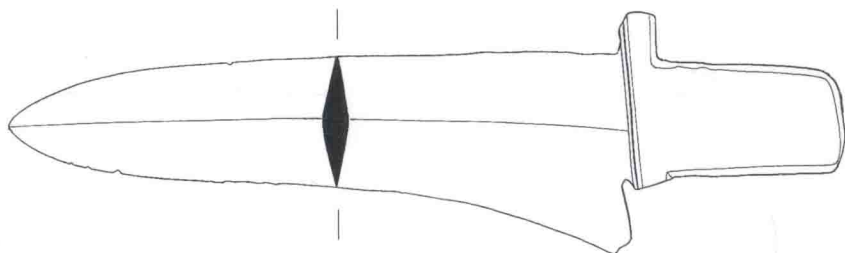
Selected in 1960 from a waste collection station of the Supply and Marketing Cooperative of Suide County, Shaanxi Province

Suide County Museum, Shaanxi Province

Length 21.2 cm, length of guard 9.3 cm, weight 227 g

This ge has a narrow blade with one side widening downward to form a short hu extension. Two slits are opened at the base of the blade which joins a rectangular tang with an almost circular perforation.





0 1.9cm

直内戈 (延安591)

西周早中期

1996年出土於陝西省洛川縣百益鄉居得村

現藏於延安市文物研究所

通長20.9cm、闌殘長4.1cm，殘重206g

長援菱形脊，闌側有穿，短胡殘斷，短內。

Ge

Early to Middle Western Zhou Period

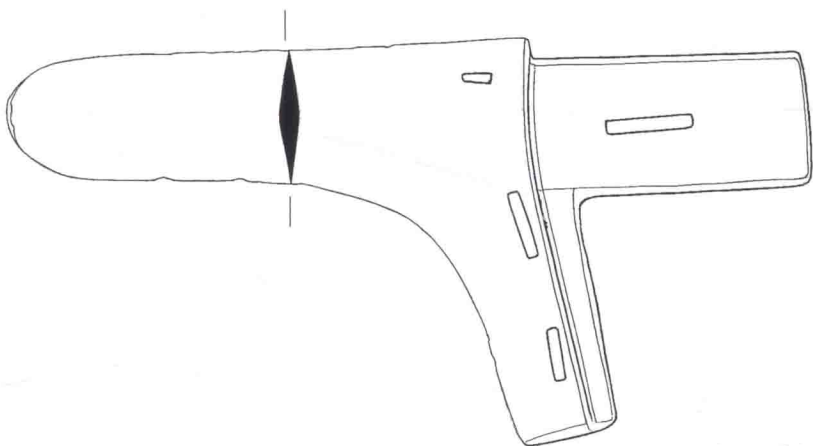
Discovered in 1996 at Judecun, Baiyi, Luochuan County, Shaanxi Province

The Cultural Relics Institute of Yan'an, Shaanxi Province

Length 20.9 cm, length of remaining guard 4.1 cm, weight 206 g

This triangular blade *ge* has a visible midrib, a short *hu* (now broken), a downward extension along the blade and a rectangular tang. The junction between the blade and the tang is marked by a ridge and two short projections.





0 2.0cm

直内戈 (宜川71)

西周中晚期

陝西省宜川縣文管所舊藏

現藏於陝西省宜川縣文管所

通長20.7cm、闌長10.6cm、重量241g

中長援弧形脊，長胡，中內。闌側三穿，內一長穿。

Ge

Middle to Late Western Zhou Period

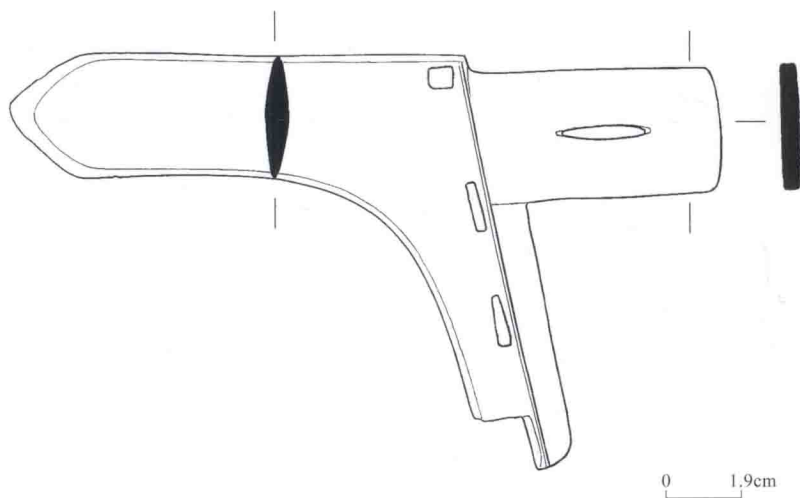
Collection in the Culture Relics Administration of Yichuan County, Shaanxi Province

Cultural Relics Administration of Yichuan County, Shaanxi Province

Length 20.7 cm, length of guard 10.6 cm, weight 241 g

The blade of this *ge* has a blunt curved front, a *hu* extension perforated with two vertical slits, and a rectangular tang with a horizontal slit. An additional slit is visible at the base of the blade.





直內戈（橫山295）

春秋早中期

1981年出土於陝西省橫山縣艾好峁鄉營盤梁村

現藏於陝西省橫山縣文物管理委員會辦公室

通長17.8cm、闌長10.4cm、重量224g

中長援弧形脊，長胡，中內，闌側三穿，內部一長穿。

Ge

Early to Middle Spring Autumn Period

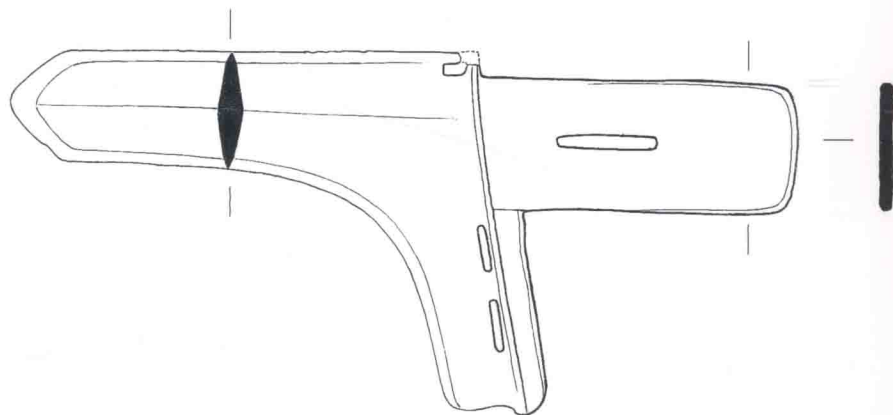
Discovered in 1981 at Yingpanliangcun, Aihaomao, Hengshan County, Shaanxi Province

Office of Cultural Relics Administrative Committee, Hengshan County, Shaanxi Province

Length 17.8 cm, length of guard 10.4 cm, weight 224 g

The rectangular blade of this *ge* features a triangular front, a *hu* (a downward elongation) pierced with two slits and a rectangular tang with a narrow oval perforation. A square opening for fastening is also seen at the top base of the blade. A narrow rectangular extension is fixed onto the blade next to the *hu* extension for additional support during the fastening.





0 1.8cm

直内戈（綏德157-2）

春秋早中期

1960年於陝西省綏德供銷聯合社廢品收購站揀選

現藏於陝西省綏德縣博物館

通長18.8cm、闌殘長8.5cm，殘重204g

中長援，菱形脊，長胡，闌側三穿，內部一長穿。

Ge

Early to Middle Spring Autumn Period

Selected in 1960 from a waste collection station of the Supply and Marketing Cooperative of Suide County, Shaanxi Province

Suide County Museum, Shaanxi Province

Length 18.8 cm, length of remaining guard 8.5 cm, weight 204 g

The blade of this *ge* features a triangular front, a central ridge, and a *hu* or a downward elongation. Two slits are perforated at the *hu*. An additional slit of the blade is broken. A rectangular tang with a perpendicular narrow extension joins the blade at a visible ridge.

