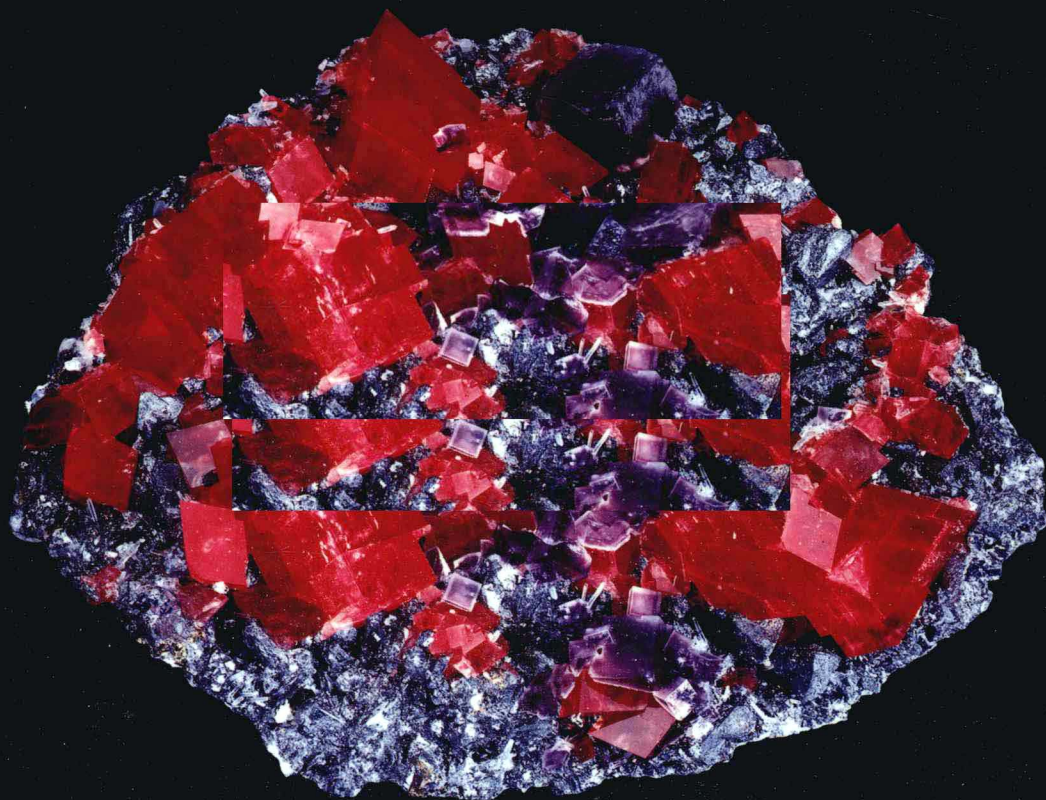


M 世界矿物精品

Mineral Treasures of the World

编著 / 中国地质博物馆 [美] 时尚矿物公司

Presented by
The Geological Museum of China
The Collector's Edge Minerals, Inc.



地质出版社

GEOLOGICAL PUBLISHING HOUSE



世界矿物精品

Mineral Treasures of the World

编著 / 中国地质博物馆 [美] 时尚矿物公司

Presented by
The Geological Museum of China
The Collector's Edge Minerals, Inc.

地质出版社

Geological Publishing House

· 北京 ·

Beijing, China

图书在版编目 (CIP) 数据

世界矿物精品 / 中国地质博物馆, 美国时尚矿物公司编著.

— 北京: 地质出版社, 2010. 5

ISBN 978-7-116-06661-8

I. ①世… II. ①中… ②美… III. ①矿物-世界-图集
IV. ①P57-64

中国版本图书馆CIP数据核字 (2010) 第078738号

版权所有 All right reserved

SHIJIE KUANGWU JINGPIN

责任编辑: 刘雯芳 何 蔓

责任校对: 杜 悦

出版发行: 地质出版社

社址邮编: 北京海淀区学院路 31 号, 100083

电 话: (010)82324508 (邮购部); (010)82324580 (编辑部)

网 址: <http://www.gph.com.cn>

电子邮箱: zbs@gph.com.cn

传 真: (010)82310759

印 刷: 北京天成印务有限责任公司

开 本: 889mm×1194mm 1/16

印 张: 8.5

字 数: 200 千字

版 次: 2010 年 5 月北京第 1 版 · 第 1 次印刷

定 价: 286.00 元

书 号: ISBN 978-7-116-06661-8

(如对本书有建议或意见, 敬请致电本社; 如本书有印装问题, 本社负责调换)



M 世界矿物精品

Mineral Treasures of the World

中方监制：贾跃明

中方策划：曹希平 张亚钧 吕林素 杨良锋

翻 译：耿竹南 何哲峰 章西焕 江 楠
李雯雯 陈晓云 任轶青

审 校：贾忠芹 李雯雯



前言 FOREWORD

本书是“世界矿物精品”展览同名画册。此展览由中国地质博物馆与美国时尚矿物公司联合主办。


2009年起，双方开始就此展览进行规划和商洽，包括确定展览主题、展览布局、展柜制作、效果图设计、画册设计、安全保卫、市场营销和其他活动等筹备工作，力求保证展览能在2010年中国上海世博会期间开幕。时间紧、任务重，经过双方艰辛的工作和努力，这一前所未有的矿物展览终于呈现于广大观众面前。

此展览汇集众多源自世界顶级矿物晶体产区的标本。它们极其珍稀，皆为同类中的上乘佳品，有的展品价值超过200万元人民币。

每一件矿物珍品都凝聚了博物馆、收藏者和矿业公司为保护它们所付出的努力。现代矿物修护技术使标本品质达到了空前的高水平。品质的跨越造就了新一代鉴赏矿物精品之艺术美的收藏者。新藏家如雨后春笋般出现，引起精品标本价格的攀升，因此，许多收藏者将矿物标本作为财富储备的方式。

中国地质博物馆创建于1916年，是国内建馆最早的博物馆之一，在中国博物馆界享有盛誉。馆藏地质标本20余万件，尤以矿物晶体收藏为一大特色。

时尚矿物公司从顶级矿物标本的需求以及寻找的激情中获得灵感，创建了一个公司，专门勘查、开采矿物晶体精品。26年来，该公司为更好地保护矿物标本而研发了专业标本采集技术，并荣获奖项。时尚矿物公司发现、收藏的许多标本在此次展览中展出，其中最值得一看的是菱锰矿。



时尚矿物公司为能与中国地质博物馆共同举办此次展览深感荣幸。该公司在中国已经营10余年，曾向一些采集矿物晶体精品的矿区提供技术援助，也积极跻身于中国的矿物标本市场，将中国藏品推向海外，使其在世界专业展销会、展览和期刊杂志上绽放异彩。

如今，矿物收藏界聚焦于中国。回首过往，几十年来，中国丰富的矿藏伴随着对外开放的步伐与世界共享，予收藏者以获得新品、精品的机会。中国矿业资产的所有者已经认识到，生产和销售矿物标本是企业盈利的一个途径。一些（金、银、钨等方面的）矿业公司将销售矿物晶体的盈利投资于开采业。现在，许许多多地球上的顶级矿物标本正从中国走向世界！

在全世界的广泛关注下，矿物标本迎来了一个“收藏的黄金时代”，一个观赏、收藏世界级矿物珍品的前所未有的最佳时机。

本书和“世界矿物精品”展览将开启一扇窗，您可以近距离地观赏这些顶级矿物标本，慨叹它们的珍稀和美丽。同时，它们还将向您介绍矿物收藏领域的相关知识，以及收藏家们为何如此珍视这些令人着迷的东西。中国地质博物馆和时尚矿物公司希望本书和“世界矿物精品”展览能够赢得您的赞誉。我们期盼您能喜爱它们，喜爱我们为您精心准备的一切。

This book is for the exhibition of "Mineral Treasures of the World", which is co-sponsored by the Geological Museum of China and the Collector's Edge Minerals, Inc..

Planning and negotiations for the exhibition began in 2009. Creation of exhibit themes, display layouts, display case construction, graphic artwork, book design, security planning, marketing and a host of other activities were compressed into a tight schedule in order to open the exhibit in the summer of 2010 during China's World Fair in Shanghai. Both the Geological Museum of China and the Collector's Edge have made great efforts to bring this first ever, one of this kind exhibit to China.

Many of the world's great mineral specimen localities are represented within the exhibit. The mineral specimens are very rare and superb examples of their species. Some exhibit specimens are valued over 2,000,000 Yuan Renminbi.

Each of the mineral treasures represents efforts by museums, collectors and mining companies to preserve them. Modern mineral preservation techniques are saving minerals of unprecedented quality. These quality improvements are creating a new generation of collectors who appreciate the aesthetic beauty of fine mineral specimens. There are so many new collectors that it was inevitable that prices for fine minerals would increase and thus many collectors are seeing minerals as a natural store of wealth.

The Geological Museum of China, founded in 1916, is one of the earliest and most renowned museums in China with more than 200,000 collections of geological materials. Mineral crystals constitute one of the most interesting features of the museum.

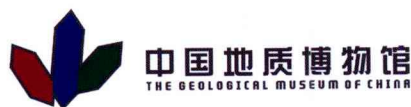
Demand for great mineral specimens and a passion to find them inspired the Collector's Edge to create a special mining company to explore and mine for mineral specimen treasures. Over 26 years, the Collector's Edge developed special, award winning collecting techniques to preserve mineral specimens. Many the Collector's Edge discoveries are represented within the exhibit; most notably, the rhodochrosite specimens.

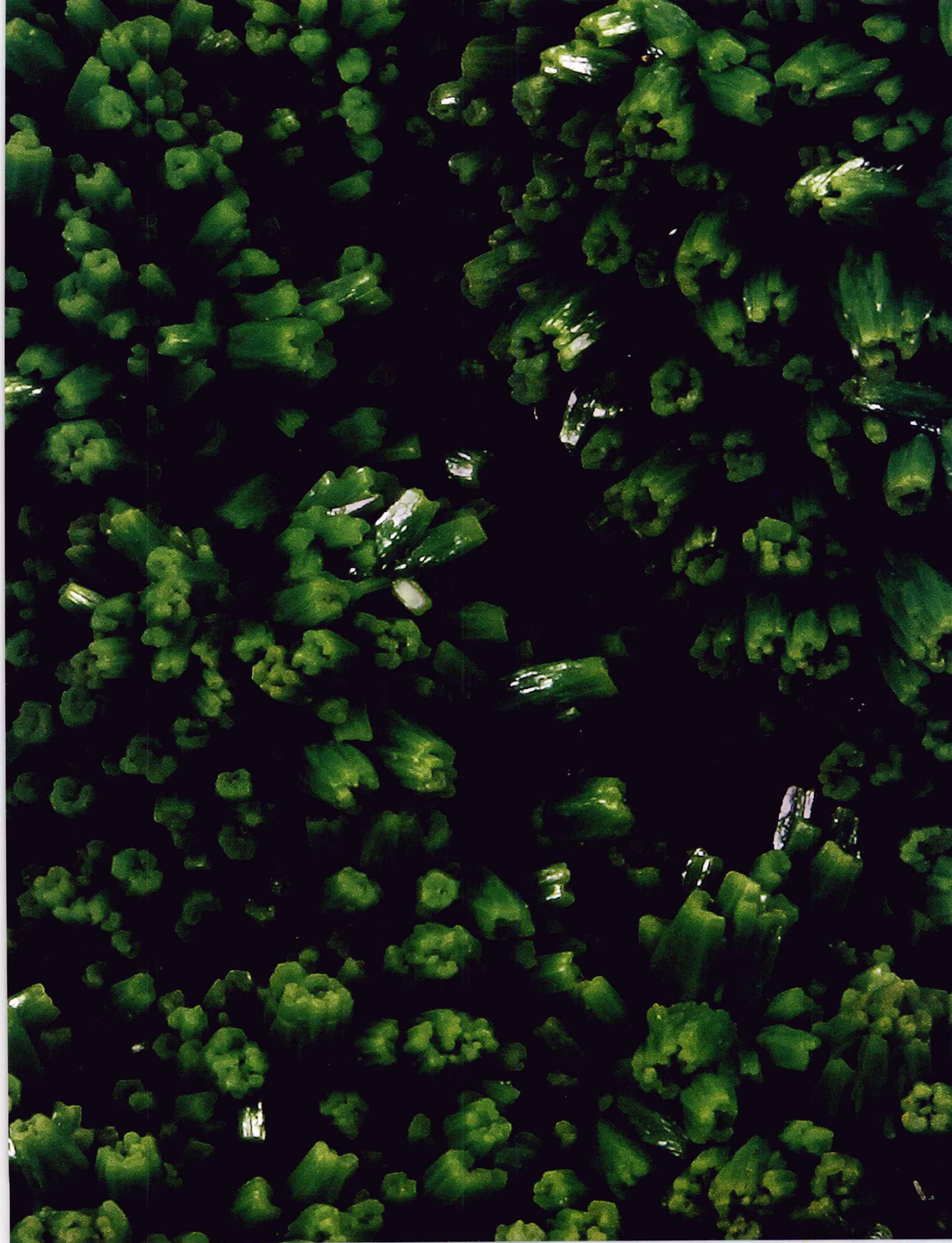
The Collector's Edge is honored to have been selected by the Geology Museum of China to co-sponsor this exhibition. The Collector's Edge has been working in China for over a decade, providing technical assistance to mines interested in collecting their mineral treasures. The companical has also been an active buyer of Chinese mineral specimens highlighting them in special trade shows, exhibits and magazines all over the world.

Much of the excitement in the mineral world is now focused on China. For the past several decades, China's mineral abundance has been shared with the world opening up opportunities for collectors to acquire new and wonderful mineral specimens. Owners of mining properties in China have recognized that producing and selling mineral specimens can be a profitable enterprise. Ore mining companies (gold, silver, tungsten, etc) use funds generated from mineral specimens to help pay mining expenses. Many of the world's greatest mineral specimens are now coming from China!

The worldwide interest in mineral specimens has ushered in what many call the "Golden Age of Collecting". There has never been a better time to view, or own the world's top mineral specimen treasures.

The book and the "Mineral Treasures of the World" exhibition give the museum visitor an opportunity to appreciate the beauty and rarity of mineral specimen treasures. The book and the "Mineral Treasures of the World" exhibition will also introduce visitors to the world of mineral collecting and why collectors highly value and prize these fascinating objects. The Geological Museum of China and the Collector's Edge Minerals, Inc. hope you greatly enjoy the book and the "Mineral Treasures of the World" exhibition. We hope you enjoy both of them as much as we have putting it together for you.





目录 CONTENTS

- 4 | **精品荟萃**
Gallery of Treasures
- 55 | **引言**
Introduction
- 58 | **第一章 发现 矿物标本开采**
Chapter 1
Discovering the Treasures Mineral Specimen Mining
- 74 | **第二章 修护 实验室修整及清理**
Chapter 2
Preparing the Masterpieces
Laboratory Trimming and Cleaning
- 84 | **第三章 收藏(一) 优质标本鉴别**
Chapter 3
Collecting Fine Minerals Identifying Superb Specimens
- 100 | **第四章 收藏(二) 世界市场趋势**
Chapter 4
Collecting Fine Minerals Worldwide Market Trends
- 106 | **第五章 收藏(三) 入门指南**
Chapter 5
Collecting Fine Minerals Getting Started
- 118 | **参考文献**
References
- 119 | **致谢**
Acknowledgements
- 120 | **作者简介**
About the Authors

精品荟萃

Gallery of Treasures



菱锰矿

产地：美国科罗拉多州帕克县阿尔玛镇甜蜜之家矿山好运矿囊

晶体化学式： MnCO_3

尺寸：15cm×22.5cm×5cm

这件世界级菱锰矿标本发现于1992年，产自著名的好运矿囊，由时尚矿物公司董事长布莱恩·利兹先生采集。它的特点是有超过12个共生的半透明、樱桃红色玻璃状菱锰矿晶体，晶体边长4.5cm。这件标本曾是美国实业家、威斯康星州阿普尔顿的约翰·巴洛先生（1914~2004年）的私人收藏品，该标本的照片曾收入他于1996年出版的个人矿物藏品著作《F.约翰·巴洛矿物收藏集》（第82页）。

RHODOCHROSITE

Locality: Good Luck Pocket, Sweet Home Mine, Alma, Park County, Colorado, USA

Formula: MnCO_3

Size: 15cm×22.5cm×5cm

A world-class rhodochrosite specimen from the famous Good Luck Pocket discovery of 1992. The piece was collected by Bryan Lees, President of Collector's Edge. This beautiful specimen features more than a dozen intergrown, translucent, cherry-red, glassy rhodochrosite crystals to 4.5cm on an edge. The specimen was formerly in the private collection of American industrialist, John Barlow (1914-2004) of Appleton, Wisconsin. A photograph of this specimen is featured in the 1996 book on his mineral collection, *The F. John Barlow Mineral Collection* (Page 82).



菱锰矿、萤石、黝铜矿

产地：美国科罗拉多州帕克县阿尔玛镇甜蜜之家矿山千禧年矿囊

晶体化学式： $\text{MnCO}_3, \text{CaF}_2, (\text{Cu,Fe,Ag,Zn})_{12}\text{Sb}_4\text{S}_{13}$

尺寸：16cm×18.5cm×6cm

这件美轮美奂的标本产自甜蜜之家矿山2000年1月1日发现的矿囊中。这个矿囊还产出了几件世界级的标本，其特点是鲜亮的樱桃红色菱面体菱锰矿晶体与紫色萤石晶体共生。2004年10月该矿山被永久关闭，使这件标本愈益重要。杰夫·斯格威尔摄。

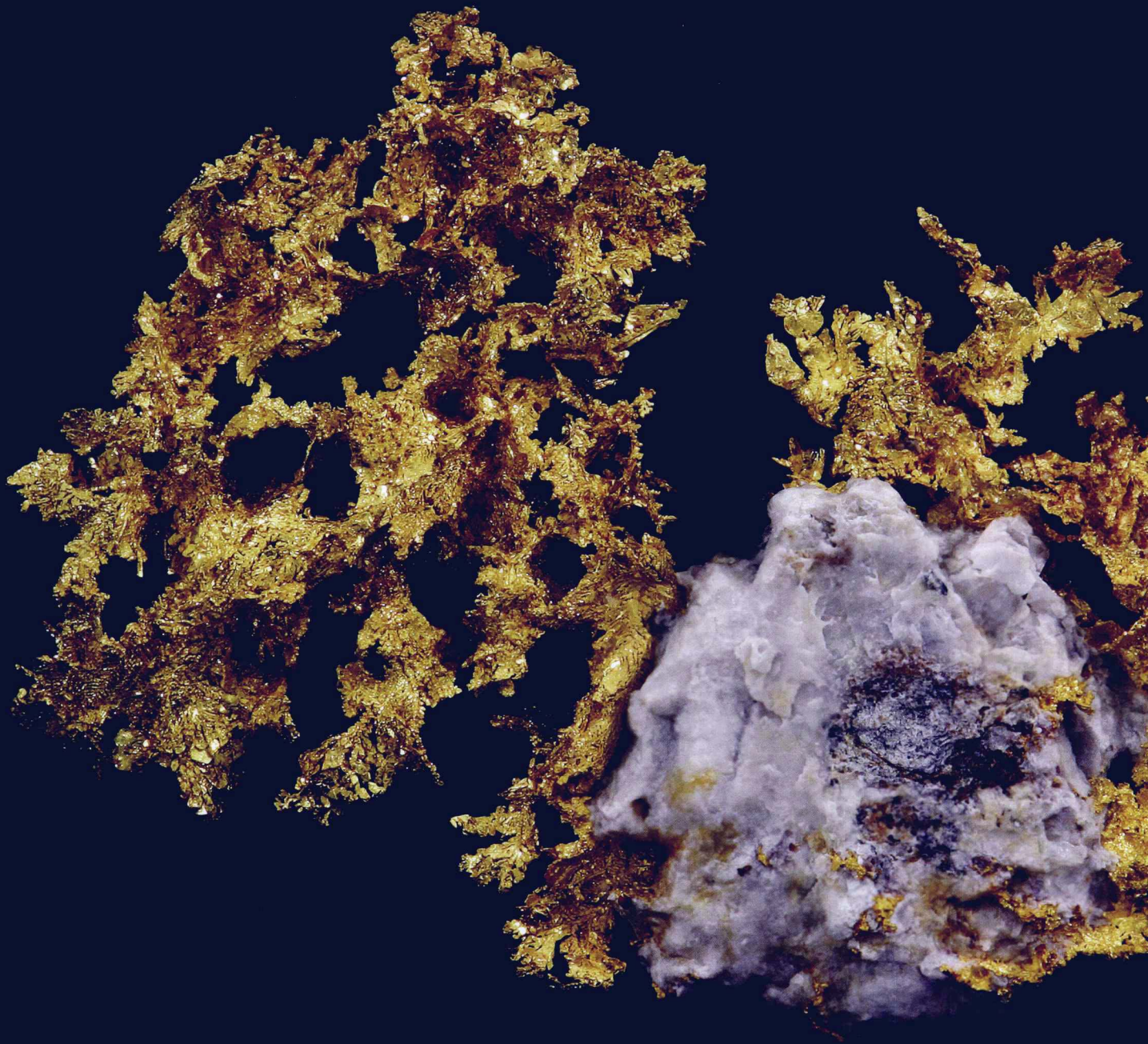
RHODOCHROSITE, FLUORITE, TETRAHEDRITE

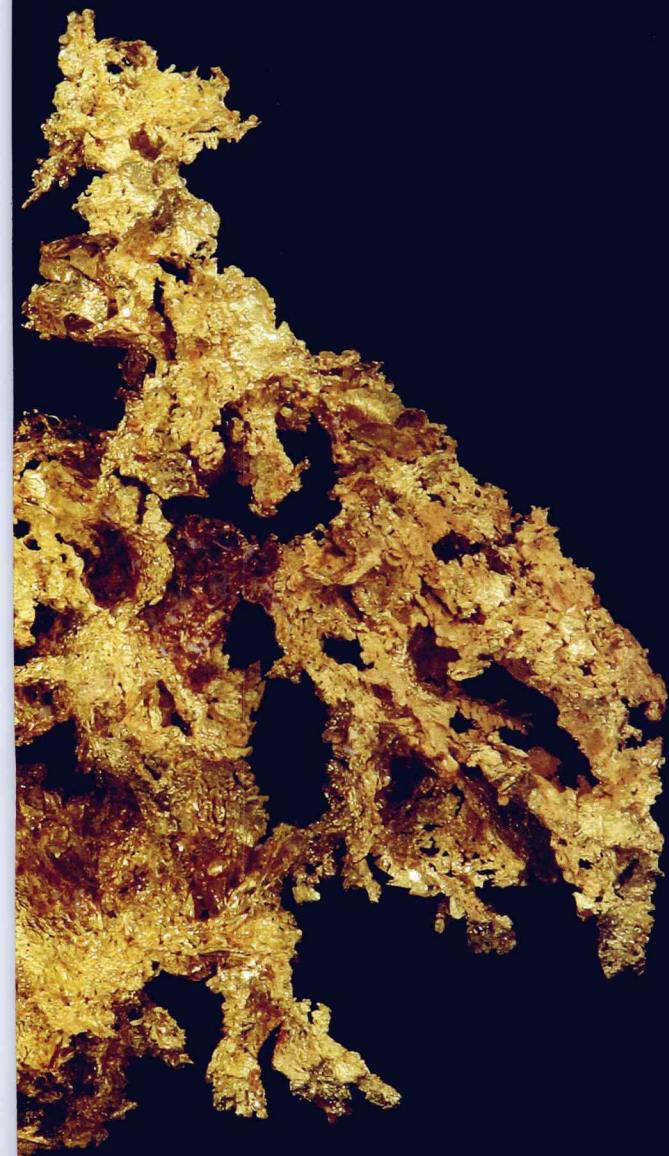
Locality: Millennium Pocket, Sweet Home Mine, Alma, Park County, Colorado, USA

Formula: $\text{MnCO}_3, \text{CaF}_2, (\text{Cu,Fe,Ag,Zn})_{12}\text{Sb}_4\text{S}_{13}$

Size: 16cm×18.5cm×6cm

This fabulous specimen was recovered from a crystal pocket discovered on January 1, 2000 in the Sweet Home Mine. The pocket yielded several world-class specimens featuring rhombohedral shaped rhodochrosite crystals having an intense cherry-red color which were associated with medium purple fluorite crystals. The mine was closed permanently in October of 2004, which makes the specimen more important. Jeff Scovil Photograph.





自然金

产地：美国加利福尼亚州普莱瑟县鹰巢矿山

晶体化学式：Au

尺寸：15cm×24.5cm×2.5cm

1982年起，鹰巢矿山成为世界上最重要的自然金标本产地之一。这件标本由扁平八面体自然金构成，晶体呈金黄色，明亮且有光泽，晶簇呈多姿的树枝状且与大块的乳石英共生。

GOLD

Locality: Eagle's Nest Mine, Placer County, California, USA

Formula: Au

Size: 15cm×24.5cm×2.5cm

Since 1982, the Eagle's Nest Mine has been one of the world's most important sources of crystallized gold specimens. This lustrous, bright, yellow-gold specimen features intergrown clusters of flattened octahedral gold crystals. These crystal clusters have formed into an aesthetic dendritic shape and have a minor association with massive milky-quartz.



雌黄 (与方解石共生)

产地: 中国湖南省石门

晶体化学式: As_2S_3

尺寸: 19cm×24cm×15cm

中国地质博物馆收藏。中国地质博物馆供图。

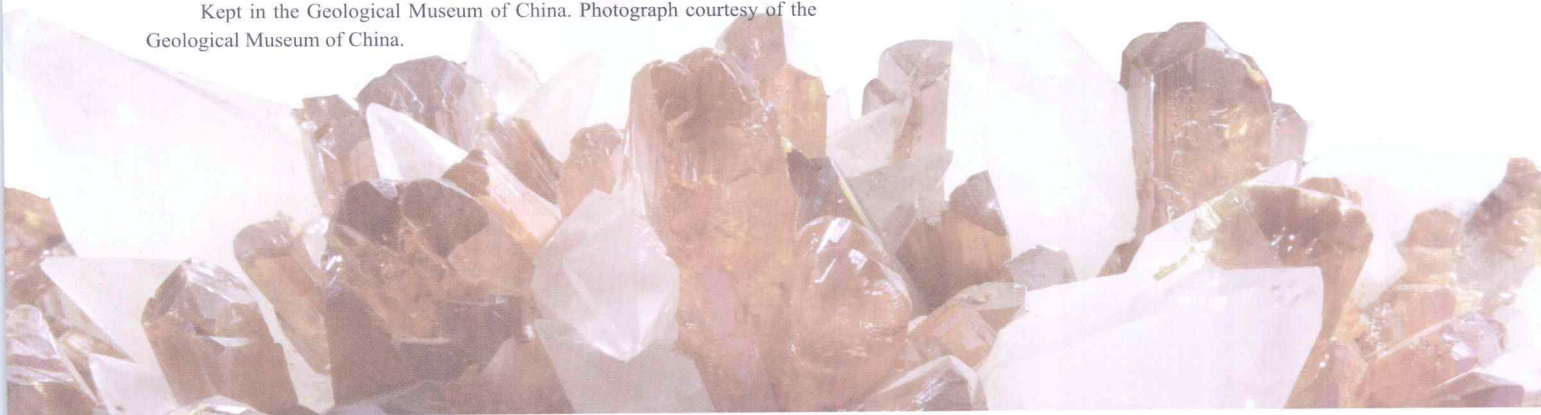
ORPIMENT (intergrowth with CALCITE)

Locality: Shimen, Hunan, China

Formula: As_2S_3

Size: 19cm×24cm×15cm

Kept in the Geological Museum of China. Photograph courtesy of the Geological Museum of China.





辉锑矿

产地：中国湖南省新化

晶体化学式： Sb_2S_3

尺寸：26cm×14cm×13cm

中国地质博物馆收藏。中国地质博物馆供图。

STIBNITE

Locality: Xinhua, Hunan, China

Formula: Sb_2S_3

Size: 26cm×14cm×13cm

Kept in the Geological Museum of China. Photograph courtesy of the Geological Museum of China.