

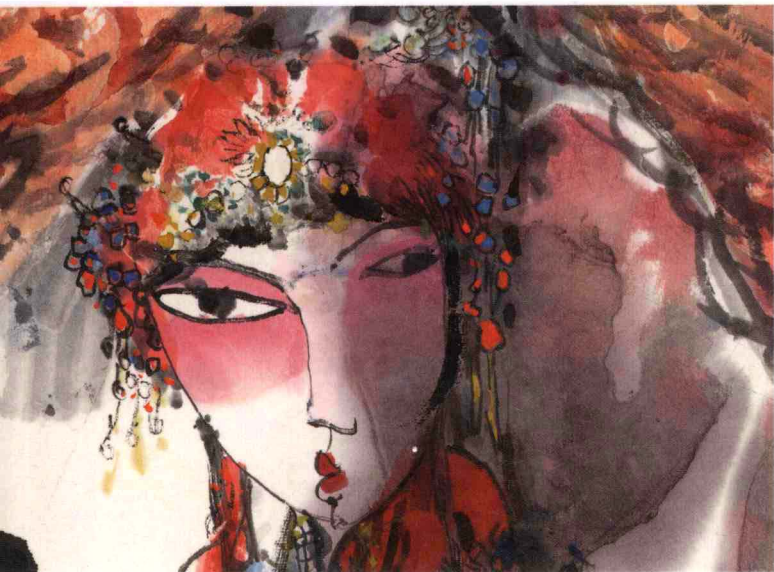
人物卷

「第二辑」

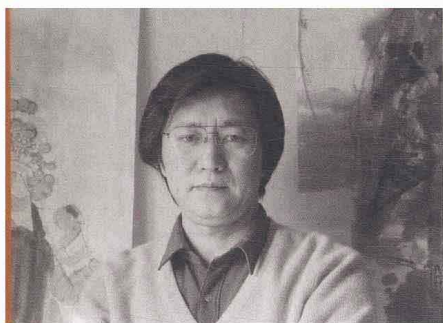
中国画名家 马书林

画库

Collected Artworks of Famous Chinese Painters



四川出版集团 四川美术出版社



马书林

1956 年生于沈阳

毕业于鲁迅美术学院工艺系

现任中国美术馆副馆长、教授，中国美术家协会理事

享受政府特殊津贴

Ma Shulin

Ma Shulin, born in Shenyang city in Liaoning Province in 1956, was graduated from the department of arts and crafts of Luxun Academy of Fine Arts. He is now a vice curator and a professor of Chinese Art Gallery and a director of the China Artists Association. He also wins a special subsidy of government.

我作为一个人物画“戏墨者”深深感悟到：笔墨本无界。中国人物画家应该在自由自在无边界的水墨中寻求方圆规矩，在无意的自然中把握必然。

书林



《美术观点》素来以“直面美术，阐述观点”为编辑主旨，在重视美术学术建设、艺术实践理解和媒体品牌构建的同时，也注重对艺术家在艺术创作过程中的理性思考以及其作品所传达的观点的研究与传播，形成了作者、编者与读者三者之间的良好互动关系，在中国美术界产生了积极影响。

《中国画名家画库》系列丛书的出版，旨在弘扬中华民族优秀文化，展现当代中国画界具有学术探索精神的老中青艺术家的艺术成就，并对他们的学术观点和艺术成果按画科（人物、山水、花鸟）分辑，个案成册，以便广大艺术家、读者之间学习交流、研究借鉴。

编 者

2006 年 8 月

Art Viewpoint takes "Direct dialogue between artists and audience" as its guiding editorial principle. The journal emphasizes simultaneous development of the study of fine arts, theory and practice in art, and the quality of multimedia. It also emphasizes research and explication of the creative process of artists and the meaning of what they want to express in their work. The aim of the journal is to improve the mutual understanding and relationship among authors, editors, and readers. It has had a major impact on the art world in China.

The publication of the book series, *Collected Artworks of Famous Chinese Painters*, showcases the excellence of Chinese culture and exhibits the achievements of various generations of contemporary Chinese painters. As a research reference, the series examines the work and perspectives of each artist according to different genres of painting to foster communication and understanding between artists and their audience.

Editor

August, 2006



京剧人物 纸本设色 136cm × 68cm 2006





京剧人物 纸本设色 136cm × 68cm 2004



京剧人物 纸本设色 88cm × 68cm 2004

書院藏

霸王劉邦與項羽建兵在霸山設下埋伏將



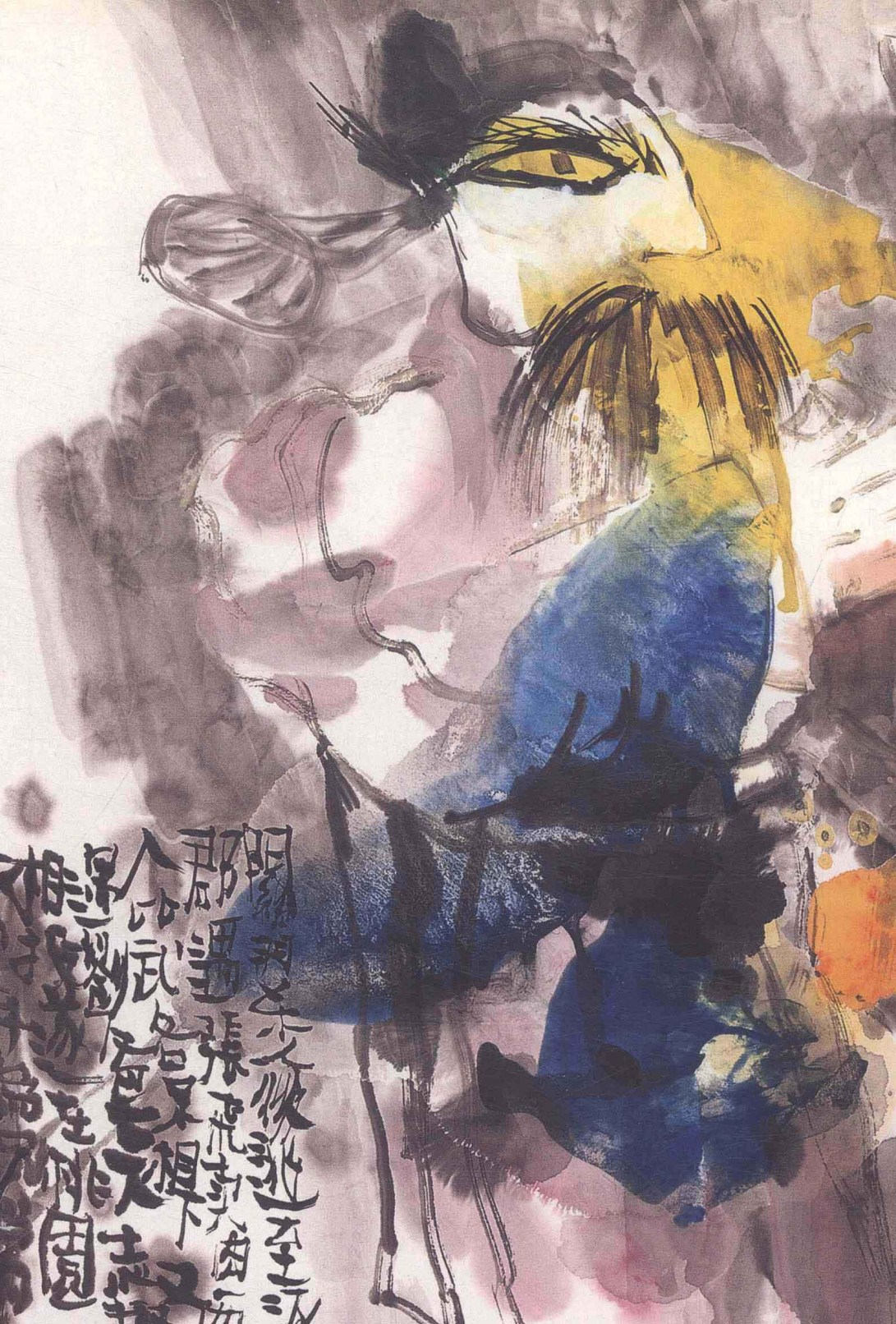


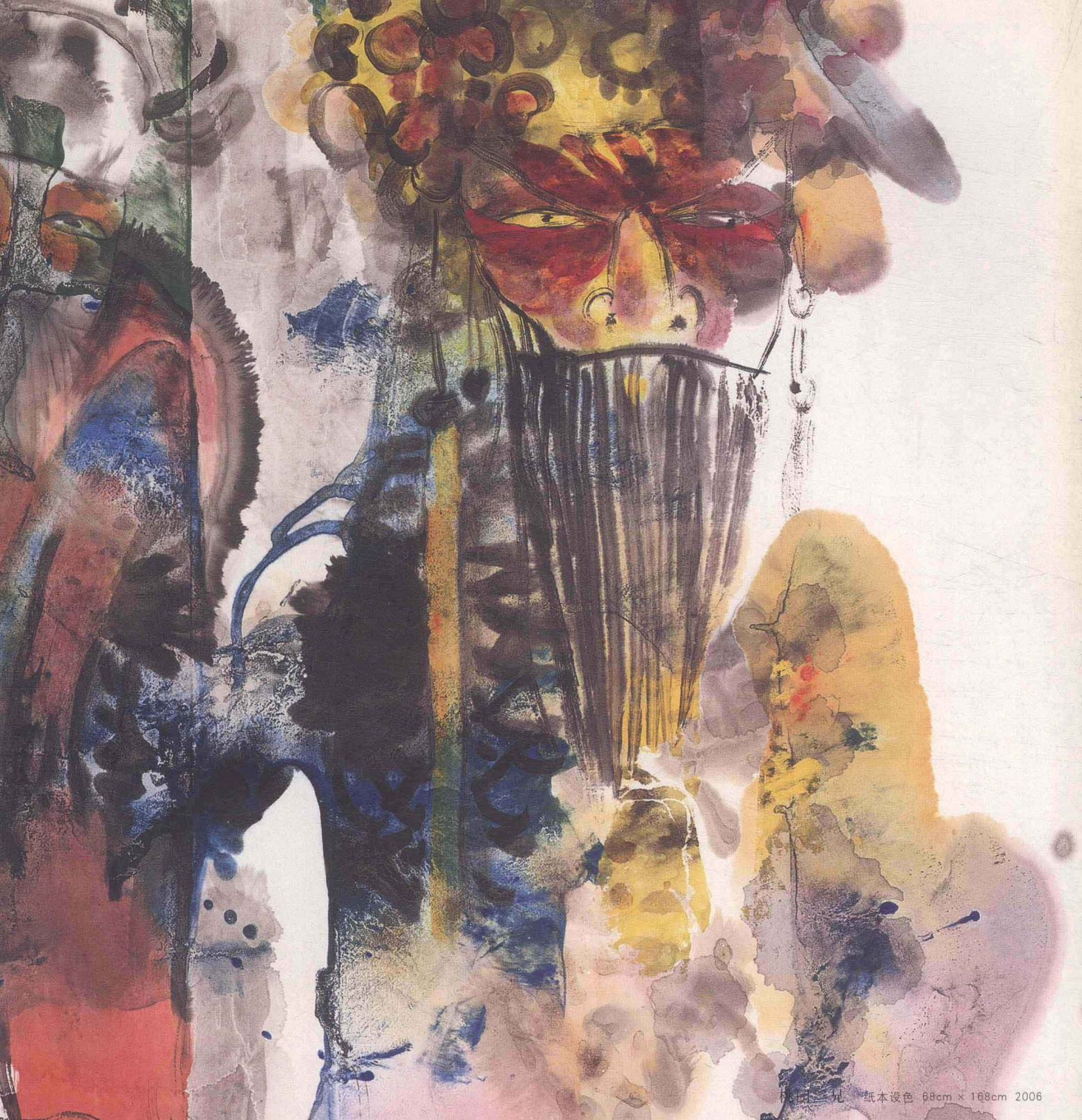
贵妃醉酒 纸本设色 68cm × 68cm 2006



桃 園 三 友

明初張氏之後逃至永
 郡遇張氏子而居之
 人比武名不虛傳又
 遇劉氏子而居之
 相與遊樂在桃園
 結三友為兄弟
 丁巳年
 書於林

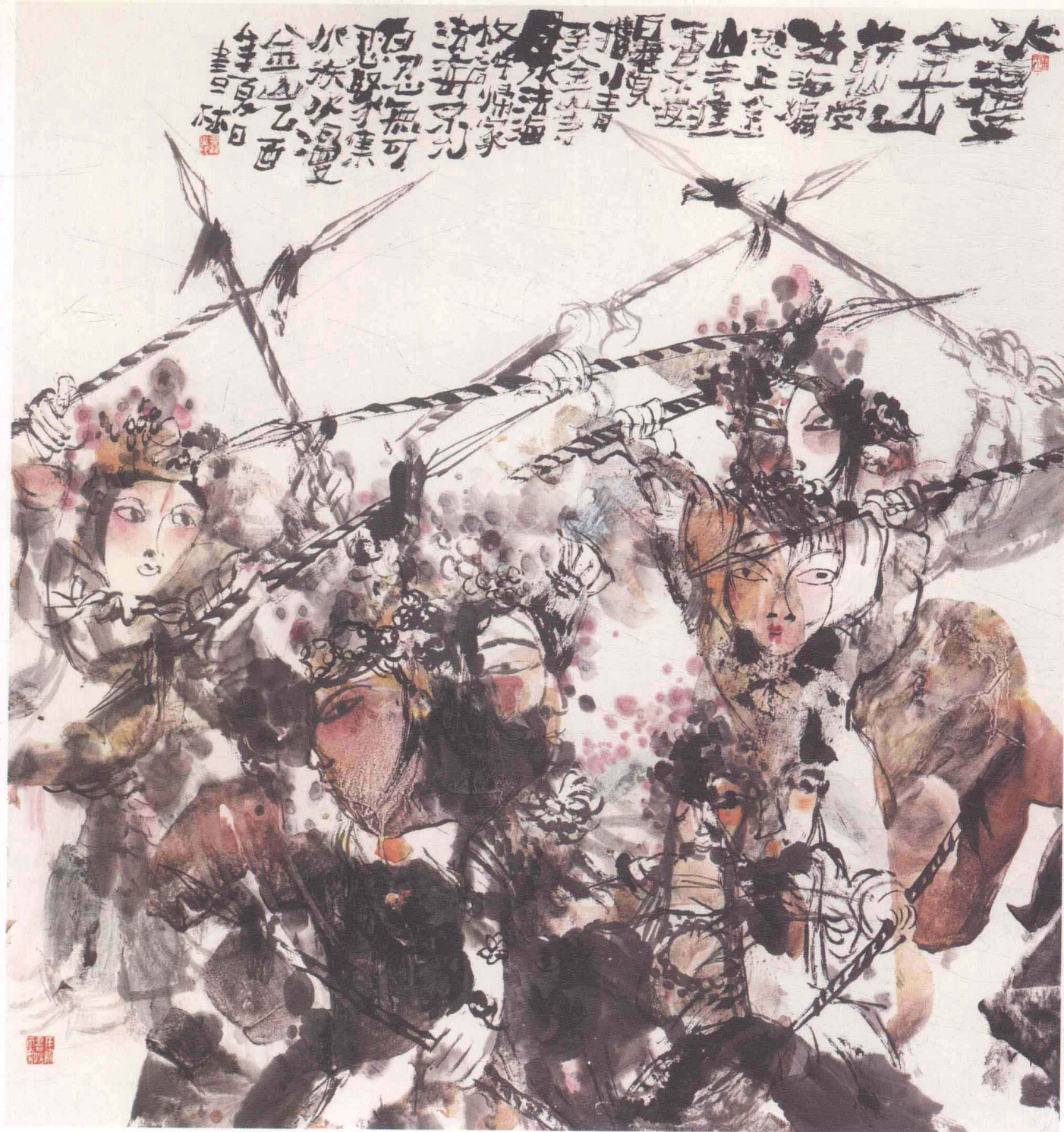




威风凛凛英气中原

丙午年書林





水漫金山 纸本设色 68cm × 68cm 2005



京剧人物 纸本设色 136cm × 68cm 2003

