

建/筑/设/计/全/方/案  
CULTURE

W

# 文化场馆

韩国A&C出版社 著



NLIC 2970701449



北京科学技术出版社

Copyright © A&C Publishing Co., Ltd.  
All rights reserved.  
Chinese simplified translation copyright © 2011 Beijing  
Science and Technology Press Co., Ltd.

著作权合同登记号 图字: 01-2010-0442

## 图书在版编目(CIP)数据

W系列. 6, 文化场馆: 英文/韩国A&C出版社著. —北京:  
北京科学技术出版社, 2011. 6

(韩国最新建筑&室内细部丛书.)

ISBN 978-7-5304-5017-8

I. ①韩… II. ①韩… III. ①文化场馆—建筑设计—英文  
IV. ①TU2

中国版本图书馆CIP数据核字(2011)第031709号

## 文化场馆

---

作 者: 韩国A&C出版社

策 划: 李 媛

责任编辑: 李 媛 王 晖

责任印制: 杨 亮

封面设计: 青鸟意讯艺术设计

图文制作: 青鸟意讯艺术设计

出 版 人: 张敬德

出版发行: 北京科学技术出版社

社 址: 北京西直门南大街16号

邮政编码: 100035

电话传真: 0086-10-66161951 (总编室)

0086-10-66113227 (发行部) 0086-10-66161952 (发行部传真)

电子信箱: bjkjpress@163.com

网 址: www.bkjpress.com

经 销: 新华书店

印 刷: 北京捷迅佳彩印刷有限公司

开 本: 920mm×1260mm 1/32

字 数: 100千字

印 张: 8.5

版 次: 2011年6月第1版

印 次: 2011年6月第1次印刷

ISBN 978-7-5304-5017-8/T·638

定价: 85.00元



京科版图书, 版权所有, 侵权必究。  
京科版图书, 印装差错, 负责退换。

建/筑/设/计/全/方/案


# 文化场馆

CULTURE

韩国A&C出版社 著



NLIC 2970701449

 北京科学技术出版社



# \* CULTURE







>>CONTENTS

# 文化场馆

## NAM

### JUNE PAIK艺术中心

KSMS(Schemel Stankovic Ges. Von  
Architekten mbH) CHANGJO  
建筑公司\_006

## GYEONGGI

### 现代美术博物馆

YETAP 建筑公司\_022

## SPEEDOME

SPACE GROUP

BAUM建筑工程咨询公司\_046

## GWANGJU美术馆

HEERIM Architects & Planners Universe-Top  
Engineering & Architects\_066

## JEJU APRIL 3RD

### 和平纪念馆

SPACE GROUP JE-IN Architects &  
Engineers\_084

## CHEONMA美术

### 中心 YEUNGNAM

### 大学60周年纪念馆

BEYOND SPACE BSD Architects\_100

## SONGDO CONVENIA

KPF BAUM建筑工程咨询公司\_118

## GWACHEON

### 国家科学博物馆

SAMOO Architects & Engineers

SPACE GROUP Terry Farrell & Partners\_130

## DOOSAN美术广场

Jang Soon-gak jay is working\_140

## PRUGIO画廊

Jang Soon-gak jay is working\_150

## CLAYARCH GIMHAE

### 博物馆

GNI Architects & Engineers\_162



## 环形画廊

Paiksun设计工作室\_176

## GWANGJU设计中心

TOMOON Engineering & Architects  
Universe-Top Engineering & Architects  
UNSANGOONG建筑公司\_184

## GWANGJIN体育中心 及青年中心

KUNWON Architects Planners Engineers\_198

## BUCHEON

### 体育文化中心

HEERIM Architects & Planners\_212

## KTF画廊 THE ORANGE

B613设计团队\_220

## YEOJU

### 世界陶艺日用品展馆

Wallga公司\_228

## SEOUL表演艺术中心

design camp moonpark dmp\_238

## 漂移的岛屿, HANRIVER 发展计划的复兴

HAEAHN Architecture H公司\_248

## YOUNGSAN RIVER

### 国家考古学博物馆

WONYANG Architectural Design Group\_254

## BAETMURY VILLAGE

### 文化资源中心

POS-A.C. TODAM建筑公司 Hyun Taik-soo\_260

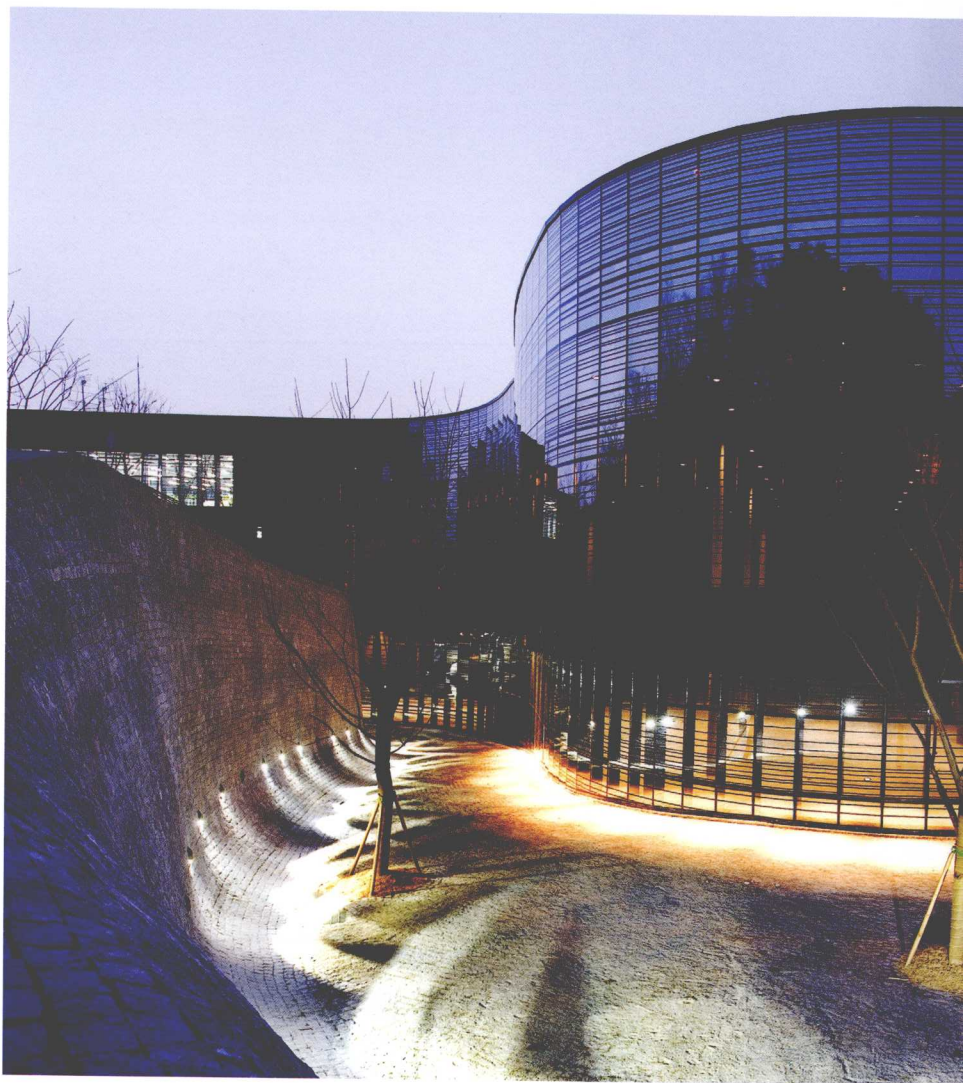
BAUM建筑工程咨询公司\_266

>> CULTURE

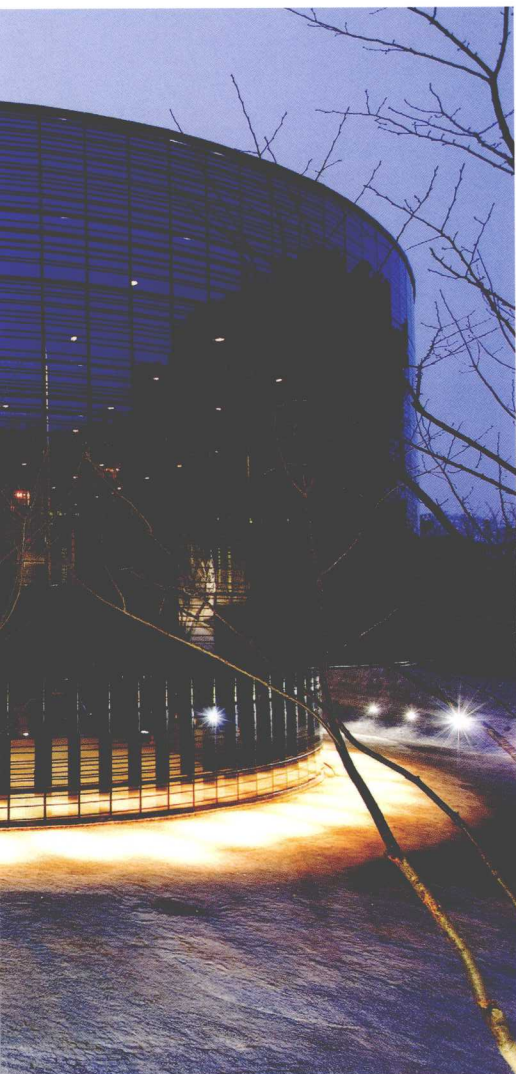
# NAM JUNE PAIK ART CENTER

006

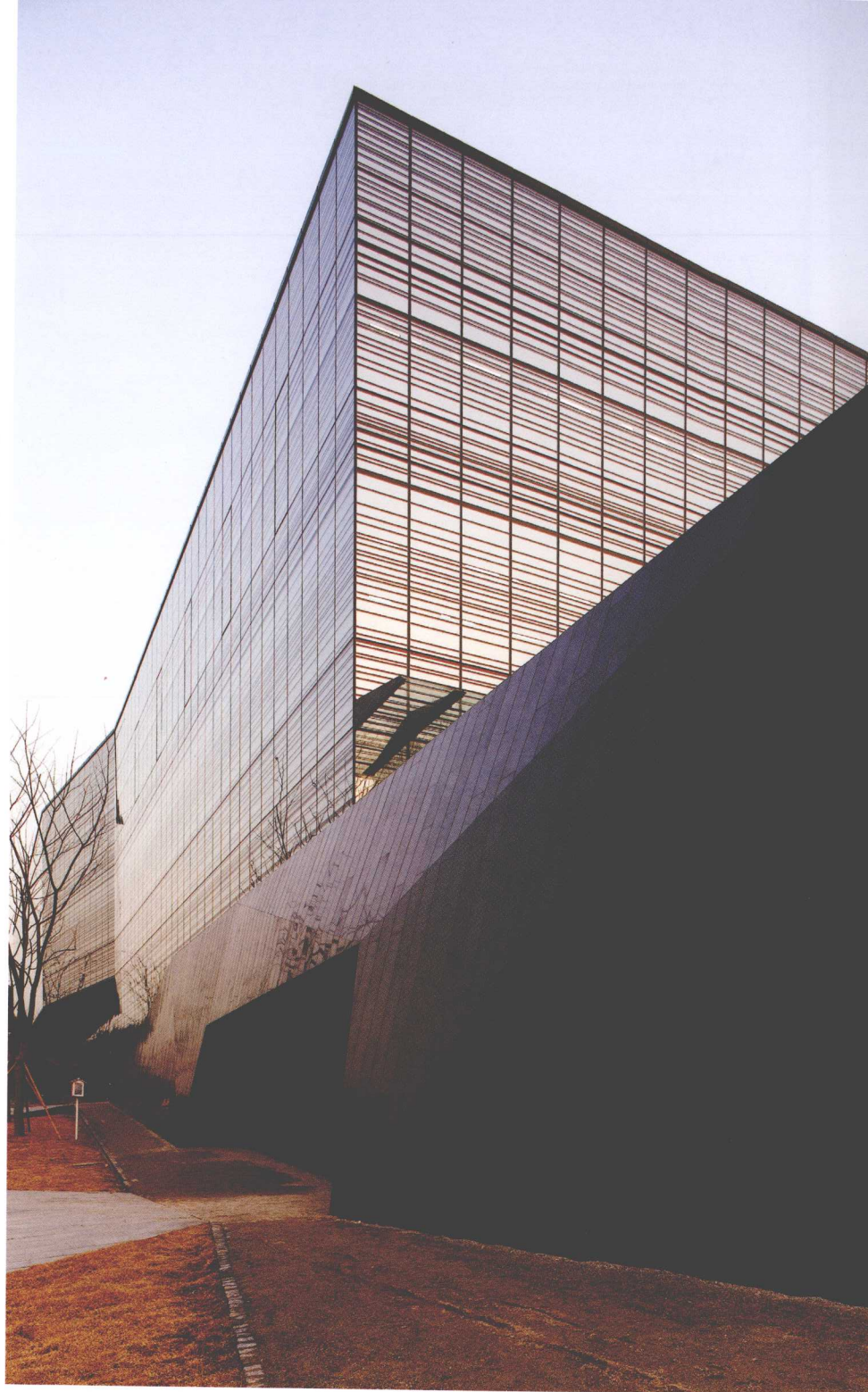
CULTURE  
NAM JUNE PAIK ART CENTER







Location Sanggal-dong, Giheung-gu, Yongin-si, Gyeonggi-do, Korea Site Area 69,358m<sup>2</sup>  
 Building Area 1,857.21m<sup>2</sup> Total Floor Area 5,605.09m<sup>2</sup> Landscape Area  
 1,068.90m<sup>2</sup>(17.42%) Building Coverage Ratio 9.51% Floor Area Ratio 16.68%  
 Building Scope B2-3F Structure RC, Steel Design Period 2004.9-2006.3 Construction  
 Period 2006.8-2008.2 Exterior Finish Curtain Wall with Silk Screen Pattern Interior  
 Finish Seal Hard, Wood, Carpet Tile, Expanded Metal Architecture Design Kirsten  
 Schemel, Marina Stankovic | KSMS(Schemel Stankovic Ges. Von Architekten mbH) + Kim  
 Byung-hyun | CHANGJO Architects Inc. Design Team KSMS\_Tobias Jortzick / CHANGJO\_  
 Lee Kang-woo, Choi Kyoung-soo, Ahn Sung-jin, Park Bong-joon, Choi Ha-youn, Lee Jae-woon  
 Construction HYUNDAI Engineering & Construction Co., Ltd. Client Gyeonggi Cultural  
 Foundation Photographer Lee Ki-hwan







General view of facade



SITE PLAN



Terrace in front of cafeteria

**PLEASURES OF AN ART EXPERIENCE** We estimate the concept of the Nam June Paik(NJP) Art Center as a contribution to his work. The most fascinating aspect in the work of Nam June Paik's is it's permanent progress and the continuous inventive evolution. This latent openness and permanent changing is the basis for our idea of an NJP art center. The architectural space should be a continuation of something of the specifics and qualities of the site and the global spread exhibition/workspaces of the cultural nomad Nam June Paik. We merely think of the Art center as an object and prefer thinking of it as an instrument, something to use and to be creative with, as a curator, an artist and as a visitor. Therefore the architectural instrument should have optimum spatial - structural potentials, which are extremely open and flowing.

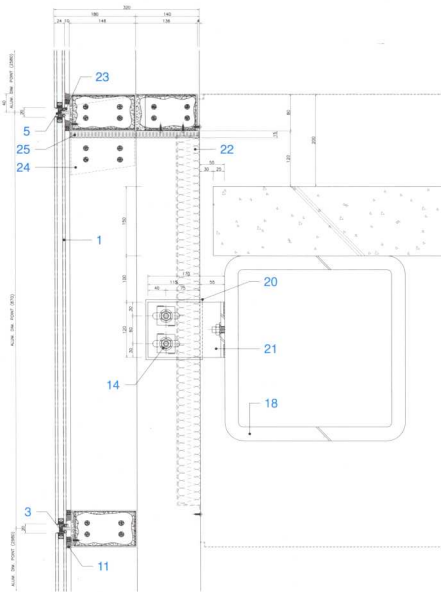
**PLEASURES OF A PLACE** We don't want a kind of hierarchical linear space and imagine a matrix with spatial complexity to be filled with endless combinations of themes, function by the curators, with artworks, installations, environments, performances by the artists and with varying experiences by the visitors. That structure is the search for a form of pleasure of an art experience. We consider the context of the art center-site as a landscape comparable in a sense to such places like 'The central park, N.Y.', 'Skeppsholmen, Stockholm', 'Tiergarten/

Kulturforum, Berlin', parks with cultural institutions embedded in or sauntering a centered green area, which is almost totally enclosed by buildings. It seems as if the extension of the urban zone is planned to surround the park, so that it's refining, recreational and atmospheric function and meaning for residential's and future visitors will grow. Therefore we are interesting in defining the art center not as a building but as a landscape, a constitutional new part of the park with landscapelike horizontal dimensions, fieldlike circulation and forestlike light and shadows. These characteristics and atmospheres of space are the search for a form of pleasure of a place.

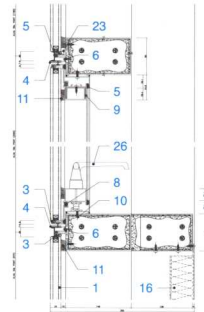
**SITE** We extend the whole given program horizontally all over the site respecting the edge of the forest with the beginning of the pine trees on a level of about 77m. This forest edge becomes the precise interface between the natural and the artificial landscape, the forest and the art center.

**THE VISITORS DISCOVERING AND PLAYING THEMSELVES** We are offering a landscape-dimensioned interior space which brims with the art of Nam June Paik and the curious visitors and their activities. People can freely select, discover and explore their own experience. This is a place that children, elderly, everybody can approach cheerfully. Text by KSMs

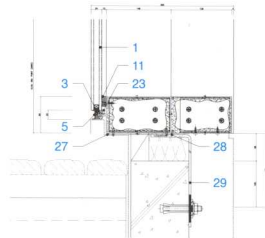




FACADE VERTICAL SECTION

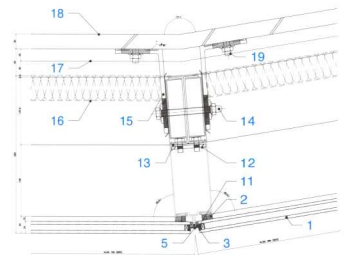
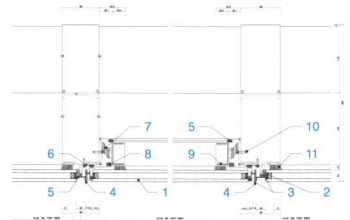


FACADE VERTICAL SECTION

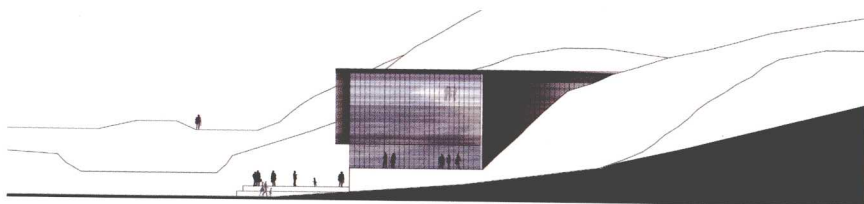


FACADE VERTICAL SECTION

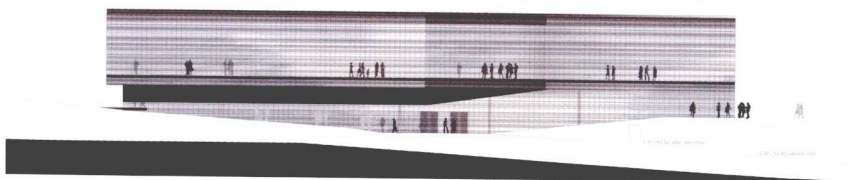
- 1 T24 PAIR GLASS
- 2 STRUCTURAL SILICONE SEALANT
- 3 GLAZING SEALANT ON BACK-UP SPONGE
- 4 AL ANGLE(34X91.5) POLYAMID GASKET
- 5 SANTOPRENE GASKET CONT. BLACK COLOR FINISH
- 6 1.5T BUTYLENE TAPE
- 7 STAINLESS STEEL 4-BAR ARM @ 2EA / UNIT NATURAL COLOR FINISH
- 8 POLYURETHANE THERMAL BAR. CONT. BLACK COLOR FINISH
- 9 U-40X25X2T AL. SHEET(M/F)
- 10 Ø4X15LG PH-TR HD SCREW @ 450MM OR 2EA / SPAN
- 11 STRUCTURAL GLAZING SEALANT ON BACK-UP BOND TAPE
- 12 70X300X6T ST'L PLATE @1EA / 1500MM
- 13 T1 VINYL SHEET
- 14 M12X120LG HEX-HD. CAP BOLT&NUT. W/ WASHER @2EA / ST'L BRACKET ST'L GALV. FINISH
- 15 170X100X9TX250LG ST'L BRACKET @ 2EA / ALUM. MULLION ONLY ST'L GALV. FINISH / T1 VINYL SHEET
- 16 34KX50T INSULATION
- 17 SLAB END LIDE
- 18 400X400X30T ST'L PIPE
- 19 M12X50LG BOLT&NUTS
- 20 T1.0 VINYL SHEET @ 1EA / ST'L BRACKET ST'L GALV. FINISH
- 21 280X100X9TX120LG ST'L BRACKET @ 2 EA/ ALUM. MULLION ONLY ST'L GALV. FINISH
- 22 T2 AL-SHEET / 32KX50T INSULATION
- 23 GLASS SETTING BLOCK @ 1/8 POINT 2 EA/ SPAN
- 24 T3.0 ALUM. SHEET SLEEVE L=150MM MULLION FINISH @ 1EA / EXPENSION JOINT
- 25 ALUM. EXPENSION JOINT @ 1EA / SLAB W/ SILICONE SEALANT
- 26 MULTI LOCK HANDLE @ 1 EA/UNIT
- 27 T1.0 VINYL SHEET @ 1EA ST'L PLATE NATURAL COLOR FINISH
- 28 200X100X5TX100LG ST'L BRACKET @ 1EA / ALUM. MULLION ST'L GALV. FINISH
- 29 M12X100LG SET ANCHOR @ 1EA / ST'L BRACKET ST'L GALV. FINISH



FACADE HORIZONTAL SECTION



WEST ELEVATION



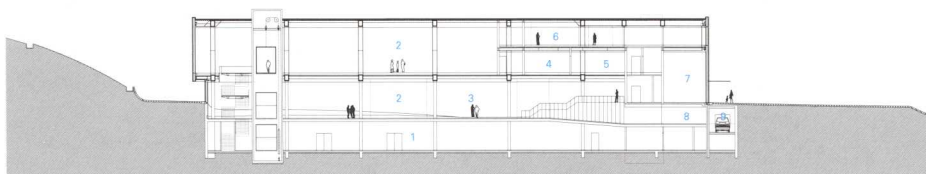
NORTH ELEVATION





View of lobby

- 1 MECHANICAL & ENGINEERING
- 2 EXHIBITION
- 3 LOBBY
- 4 SPECIAL STORAGE
- 5 MEDIA LAB
- 6 OFFICE
- 7 CAFETERIA
- 8 EDUCATION ROOM
- 9 LOADING DOCK



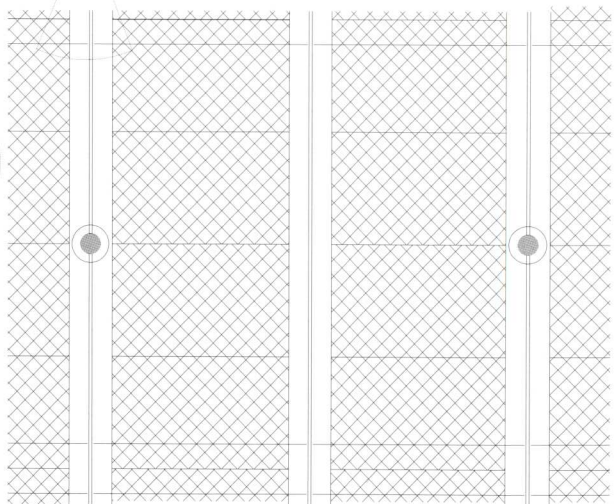
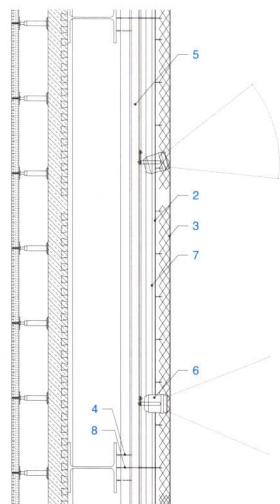
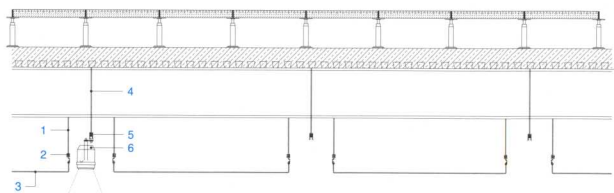
0 5 15m

SECTION



Exhibition, 2nd floor.

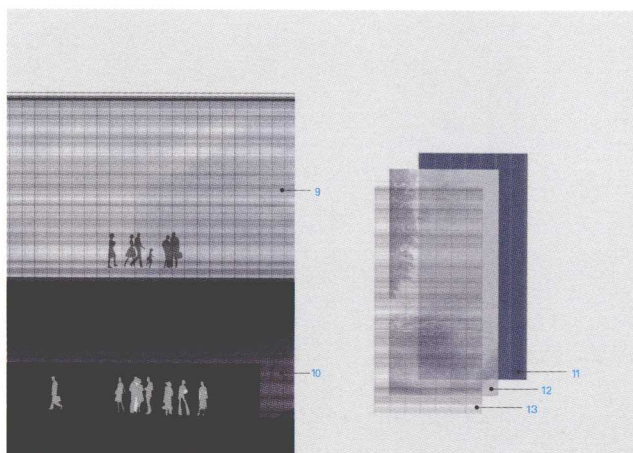




0 1 3m

REFLECTED CEILING DETAIL

- 1 TRACK SUSPENSION
- 2 METAL MESH TRACK
- 3 METAL MESH-SUSPENDED FROM TRACK
- 4 SUSPENSION FOR BUSRUN
- 5 SINGLE CIRCUIT BUSRUN
- 6 OPTIONAL WALLWASH AND OBJECT FIXTURE
- 7 FLUSH RECESSED LOUVRE LUMINAIRE
- 8 METAL MESH TRACK SUSPENSION
- 9 SILK SCREENED LINE PATTERN ON
- 10 TRANSPARENT GLASS
- 11 TEXTILE ROLLER BLIND FOR COM-
- 12 REFLECTIVE SUN PROTECTION
- 13 SILK SCREENED OR ETCHING



LAYERS OF THE FACADE