

COMMERCIAL
THE SELECTED OF
INTERNATIONAL LATEST SPACE

国际最新商业空间精选

林东 主编

张洁 张琦 杨鑫 翻译



华中科技大学出版社

<http://www.hustpas.com>

COMMERCIAL
THE SELECTED OF
INTERNATIONAL LATEST SPACE

国际最新商业空间精选

林东 主编



华中科技大学出版社

<http://www.hustpas.com>

图书在版编目 (CIP) 数据

国际最新商业空间精选 / 林 东 主编.
—武汉: 华中科技大学出版社, 2011.1
ISBN 978-7-5609-6659-5

I. ①国… II. ①林… III. ①商业—服务建筑—室内设计: 空间设计—作品集—世界—现代 IV. ①TU247

中国版本图书馆CIP数据核字(2010)第202324号

国际最新商业空间精选

林 东 主编

出版发行: 华中科技大学出版社 (中国·武汉)
地 址: 武汉市武昌珞喻路1037号 (邮编: 430074)
出 版 人: 阮海洪
责任编辑: 林 俐
翻 译: 张 洁 张 琦 杨 鑫
书籍设计: 雕刻时光工作室
责任监印: 秦 英
印 刷: 北京佳信达欣艺术印刷有限公司
开 本: 965 mm × 1270 mm 1/16
印 张: 23
字 数: 180千字
版 次: 2011年1月第1版
印 次: 2011年1月第1次印刷
书 号: ISBN 978-7-5609-6659-5 / TU · 974
定 价: 199.00元 (USD50.00)

投稿热线: (010)64155588-8040 linli623@gmail.com
销售电话: (022)60266193, (010)64155566 (兼传真)
邮购电话: (010)64155588-8825
网 址: www.hustpas.com
版权专有 翻版必究

(凡购本书, 如有缺页、脱页, 请向本社发行部调换)

目录

contents

1 餐厅

Restaurant

El Portillo 8

Mercat 餐馆 12
Mercat Restaurant

Kazumi 日式料理店 18
Restaurant Kazumi

“工厂” 餐厅 24
Fabbrica

Pluk 美味的食物是一种享受! 32
Pluk Good Food is Great Fun!

海洋之屋 36
Ocean Room

柏林技术大学自助餐厅 42
Cafeteria Sheet Lightning

西奥多咖啡餐厅 48
Theodor TLV

奥森餐厅 58
Orson Restaurant

特雷斯龙舌兰餐厅 64
Tres Agaves Restaurant

圣比萨巴赫克阿劳科餐厅 68
Restaurant Santa Pizza Parque

多明加餐厅 74
Domingo Bar-Restaurant

Amorio 餐馆 84
Restaurant Amorio

Cartet 餐厅 90
The Cartet Restaurant

管道餐厅 94
Conduit Restaurant

吐司餐厅 100
Toast Restaurant

2 酒吧&咖啡厅

Bar&Café

空间是时间函数咖啡厅 108
Coffee Bar $S=f(t)$

进化·餐厅酒吧 114
Re.evolution Lounge+Bar

续·联合咖啡厅 120
Sequel by United Coffee House

Des Saluts沙龙 128

Salon Des Saluts

“葡萄”酒吧 136

Bar & Wine Cellar ‘Mahatsa’

Theodore咖啡厅 142

Theodore Café Bistro

东京孩子咖啡馆 150

Tokyo Baby Café

商业区酒吧 156

Downtown Bar

浓咖啡酒吧 162

Espressobar ‘EspressoFabriek IJburg’

伊斯蒂克拉尔的HOUSE咖啡馆 168

The House Café Istiklal

芭比咖啡馆, 上海 174

Barbie Café, Shanghai

Nespresso咖啡厅 180

Nespresso's Coffee

3 商店
shop

VilaSofa家具店 188

VilaSofa

Vakko尼尚坦石 194

Vakko Nisantasi

芭比上海店 198

Barbie Shanghai

Marithe & Francois Girbaud

新概念店 214

New Concept Store Marithe & Francois Girbaud

Isolee Calle Infatas 222

阿斯佩西, 概念店, 马德里 228

Aspesi, Concept Store, Madrid

Patrick Cox专卖店 234

Patrick Cox

喜力世界 238

Heineken The City 250

Livraria da Vila 书店 244

Livraria da Vila(Cidade Jardim)

Reed空间 250

Reed Space

Jugetsudo 256

心斋桥Lucien Pellat-Finet商店 260

Lucien Pellat-Finet Shinsaibashi

DURAS 卖场 264

DURAS Daiba

ASOBIO第一渠道 268

ASOBIO Channel One

面试装精品店 274

Dress For Success Charlotte

阿皮亚诺超级药房 280

Parapharmacy Appiano

美因茨凯悦酒店 286

Castle Chic on The Banks of The Rhine

黑盒子—保龄球、台球、投镖俱乐部 298

BLACKBOX-Bowling.Billiards.Darts.Club

Aqua Sheko 高端水疗馆 306

Aqua Sheko High-end Spa

More Than Pilates 310

半岛温泉 314

The Peninsula Spa by ESPA

CASA的豪华座位包厢 318

MAPT_CASA Sky Box. Interior Design

Boa美发店 322

Boa Hair / Claudia Meier

Mizu 水疗中心 326

Mizu Spa

AFM电影院 330

AFM Cinema

德瓦瑜伽 334

Yoga Deva

圣比萨冲浪中心 338

Wavehouse - Santa Pizza

里昂Sofitel Bellcourt 酒店 342

Sofitel Lyon Bellecour

REVOLUTION俱乐部 352

Revolution Lounge

Bastard 商店 360

Bastard Store

1

PART



餐厅



RESTAURANT



El Portillo

■ 项目介绍 Project Details

Project Name/项目名称: El Portillo

Client/项目委托: Aramón .

Location /地点: Javalambre, Teruel, Spain

Area /面积: 80 m²

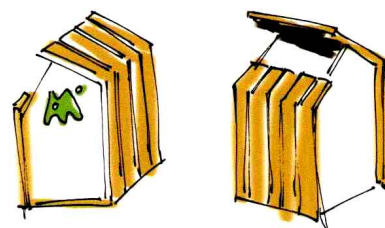
Completion Date / 竣工时间: 2009

Design Company / 设计公司: Stone Designs (www.stone-dsgns.com)

Designer / 设计师: Cutu Mazuelos Y Eva Prego

Photographer / 摄影师: Stone Designs

EL PORTILLO





El Portillo是位于西班牙特维尔Javalambre滑雪场的小屋。这是一个典型的加拿大风格的由原木制成的小屋，人字形屋顶。项目的主要任务包括重塑空间，因为至今这里都没有被合理设计和使用，项目要将这里作为滑雪场卖汉堡的咖啡厅。

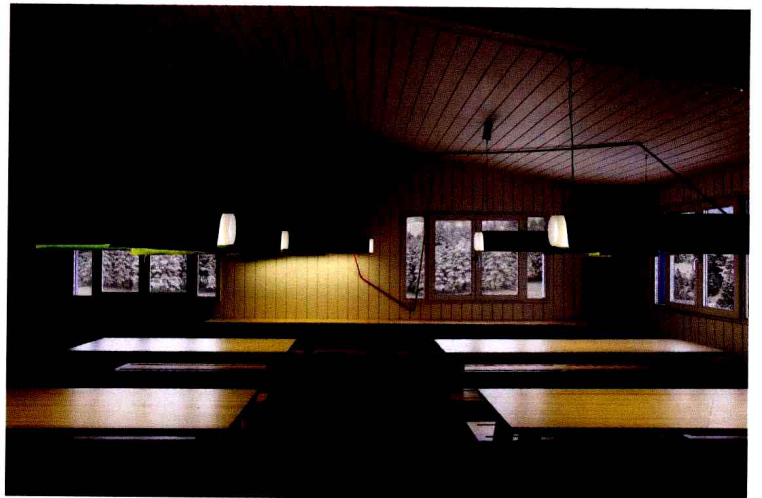
Aramón集团将这个项目交给Stone Design设计团队设计，设计团队毫不犹豫地答应了下来，这对他们来说是一个完美的项目。在完全自然的滑雪场环境中，一座木制小屋，真是完美。

设计的构想始于将室内环境和室外设计结合起来，相互辉映，并且能充分利用木制小屋的优势。考虑到这个小屋只在冬天使用，并且冬天有持续降雪，设计概念希望将小屋设计成雪景中的一部分。冬天，降雪、远山，一切都成为黑白对比，大雪会将所有覆盖上的东西变成白色，而没被遮盖的自然显示深色。这也是设计师将小屋外墙涂成深色的原因，这样就可以和远处的雪景形成对比，并很自然地成为雪景的一部分。设计方向确定下来后，设计师马上想到，为了使设计更加生动，需要和平面设计师Pepa Prieto (www.pepaprieto.com)合作，而

El Portillo is a cabin located at Javalambre ski station in Teruel. It is a typical Canadian wood cabin made of tree trunks, with a pitched roof. The project consisted of reconverting the space, which up until now had been uncared for both in terms of design and operation, into a hamburger cafe to cater for a specific zone of the station.

As you can imagine, when the Aramón Group offered the project to Stone Designs, the latter did not think twice about saying yes; it seemed the perfect project for them. It was a ski station, in the midst of nature, in a completely snow filled landscape; a wooden cabin, made to measure.

The initial idea was to create an interior and exterior that would co-exist harmoniously and mutually complement each other, and in this way take as much advantage as possible of the cabin. Given that it would only operate in the winter, taking into account the constant presence of snow, the first idea was that the cabin should form part of the landscape. In winter, with the snow on the mountain, everything becomes a contrast of black and white, that is, snow covers everything and anything not covered is dark in colour. This is why it was decided to paint the whole of the outside of the cabin black, so that it would contrast with the snowy landscape and, at the same time, form part of this landscape. Once this idea was clear it was decided that, to obtain the desired effect, it had to be brought to life, which immediately brought to mind the idea of collaboration with the graphic artist Pepa Prieto (www.pepaprieto.com) who, as on other occasions, was



Pepa立刻就答应了。她设计了小屋外墙图案，使小屋立刻生动起来。外墙设计中使用的唯一颜色是白色，白色使得图案看起来像是从雪地中生长出来的一样。

小屋室内的设计完全是另一种风格了，不同于外部的深色调，内部全部漆成白色，这也是为了在阴天时利用少量的光线营造出温暖的室内效果，特别是在那冬天最难熬的日子，这里将成为滑雪者的庇护所。

设计团队希望用尽可能少的元素装饰室内。最终，家具成为创造室内空间和独特对话氛围的手段。

由于顶部空间形状特殊，设计用一条红色登山绳作为变形元素来柔化房顶线条，使空间看起来充满动感而有活力。红线下面，是一系列北欧风格的松木原木桌子，边缘用绿色的企业标志色点缀，使得家具看起来不至于呆板。松木原木坐椅将空间和其他家具连接起来，坐椅的栏杆是用红绳包裹的金属杆，这也同样柔化了空间线条，并使得设计元素具有统一的效果。

为创造独立灯光空间，灯具悬挂在桌子上面。这些灯具也是为这个设计特制的。聚碳酸酯的柱形灯罩用织物包裹，给人温暖的感觉。

吧台区域装饰黑色条纹一直延伸到室外，既与室内颜色形

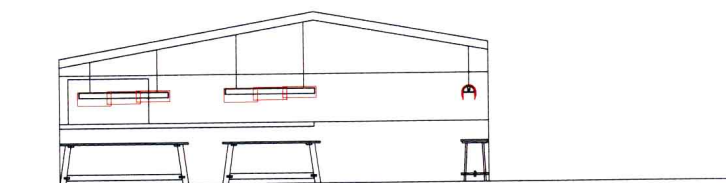
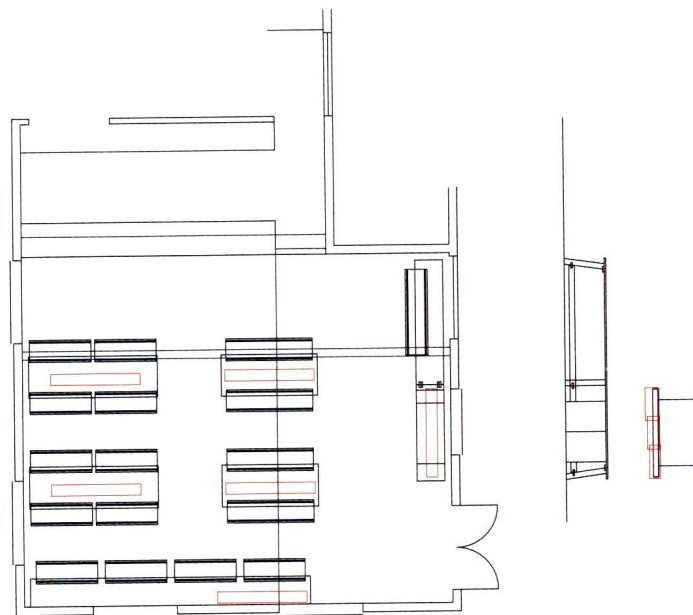
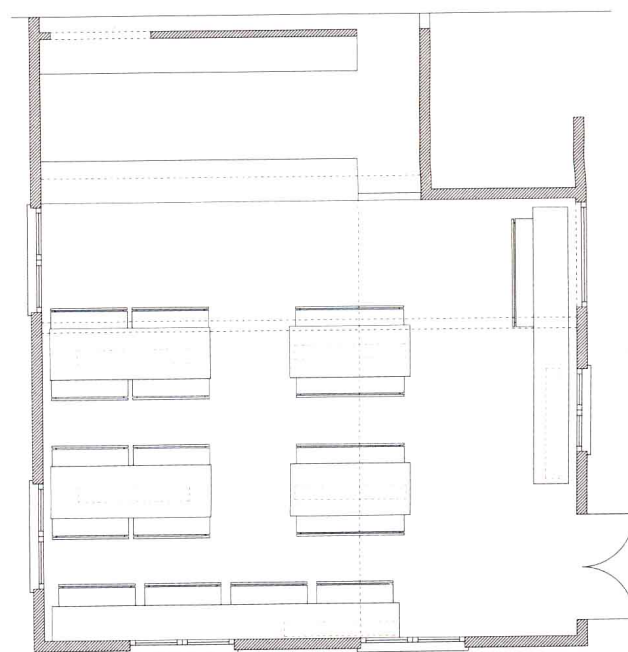
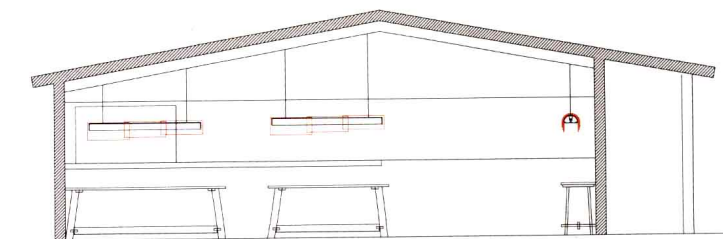
pleased to collaborate with them. She was finally responsible for giving life to all the creatures that since then have inhabited the walls of the cabin. The only colour used to create these creatures was white, because in this way, they appear to emerge out of the snowy ground.

The inside has been approached in a completely different way and, whilst the outside is black, the interior has been painted white, seeking to take advantage of the scarce light on cloudy days and creating a cosy space in which to take refuge during the harshest days of winter.

It has been endeavored to use the fewest number of elements possible so that, in the end, the furniture becomes the means used to create the topography and unique dialogue of the establishment.

As the space had a very marked shape, it was decided to use a red climbing rope as an element of distortion that would soften its lines, creating a vision of the area that is less static, filling it with movement and life. Under this red line, there are a series of Nordic style tables made of natural pine with the edges in the corporate green of the group which is thus presented to users, but is not overpowering. For seating, benches were designed that form a link between the space and the rest of the furniture, as, not only are they made from natural pinewood, but the rails on which they are supported are steel rods covered with the same rope that softens the space's shape, thus achieving the feeling that all the elements form part of one same ensemble.

To create individual lighting, lamps have been hung over the tables. These were created specifically for the project and consist in a polycarbonate cylinder covered with textile tiles that give the space great warmth.





成对比，又增加了空间纵深感。

设计中最自由的部分是小店菜单，充分体现了时尚的特点。菜单是直接写在胶布上的，这样当更换菜名的时候就不用求助于专业人员改菜单了。

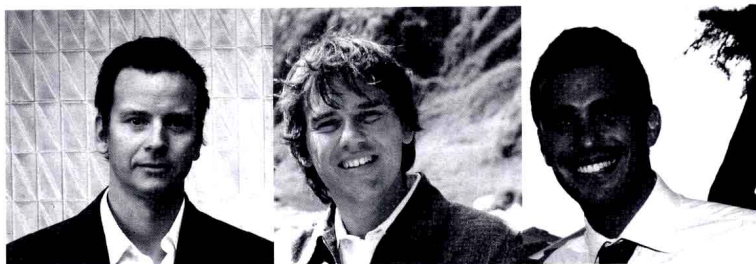
为了突出小屋被群山环绕的特色，设计使用了一些鹿角形状的“战利品”来诙谐地表现Aramón公司形象。顾客确实一进店就有惊喜，小店外表深沉，但并不像传统空间那样给人沉重感，而是以一种非常简洁的方式给顾客带来温暖的感觉。

The bar zone has been decorated with a black band that reminds of the outside of the cabin and creates contrast that gives the space depth.

The most uninhibited character comes from the menus; a true reflection of the sassiness of their creators, they are written directly on pieces of masking tape, which means that they can be changed when necessary without having to resort to professionals.

To accentuate the mountain character of the cabin, a series of "trophies" have been designed for the Aramón Group, which represent deer horns, but carried out in such a way that they almost seem a joke of their source of inspiration.

Indeed, the first impression one gets upon entering is one of surprise, as it does not present the typical topography of an establishment in these types of surroundings where dark colours usually prevail, with overloaded spaces seeking warmth, which in this case is achieved in a much simpler manner, providing solutions that are much more effective for this purpose.



Mercat 餐馆

Mercat Restaurant

■ 项目介绍

Project Details

Project Name/项目名称: Mercat Restaurant

Location /地点: Naeva Costanera 4092, VITACURA, Santiago chile

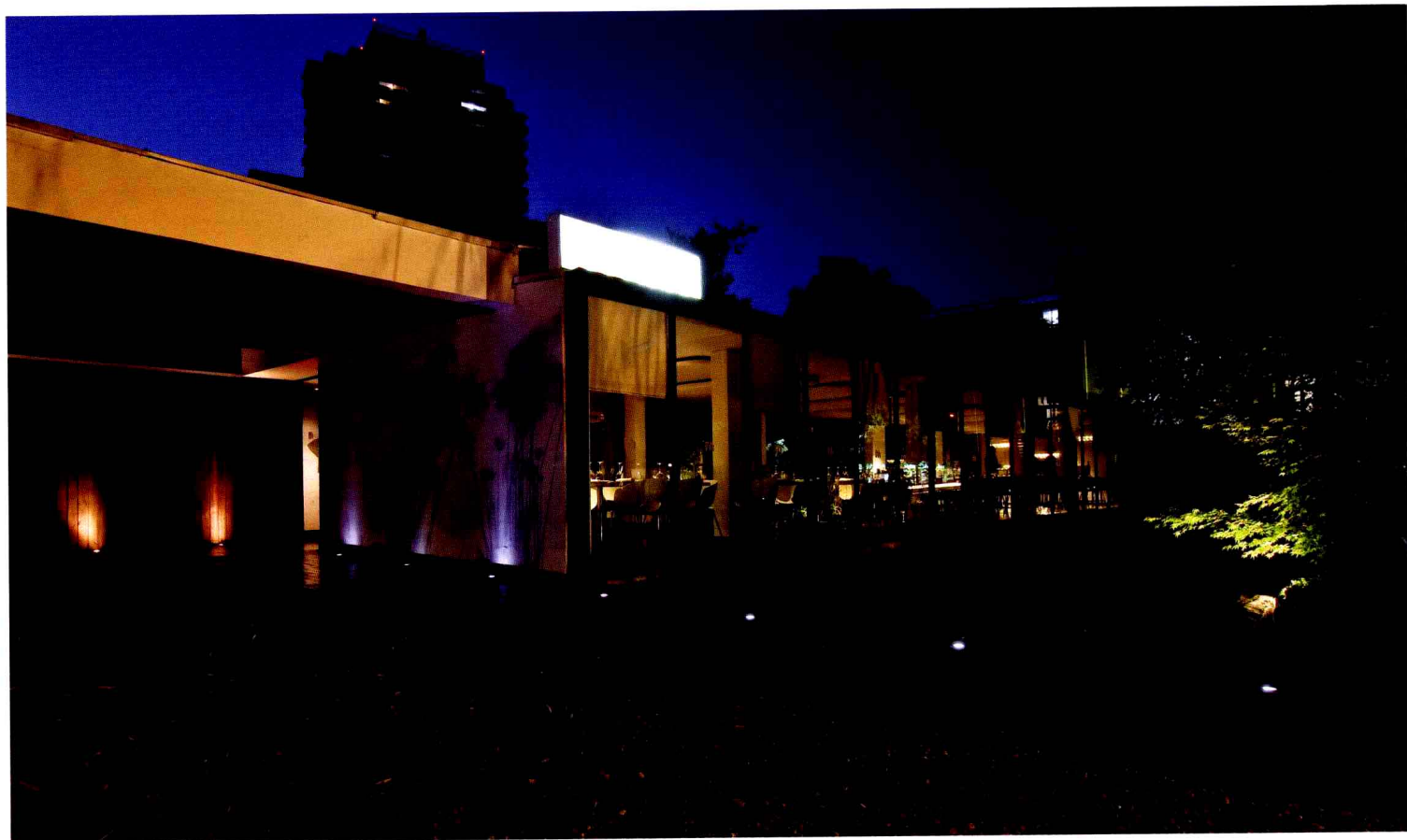
Area /面积: 250 m²

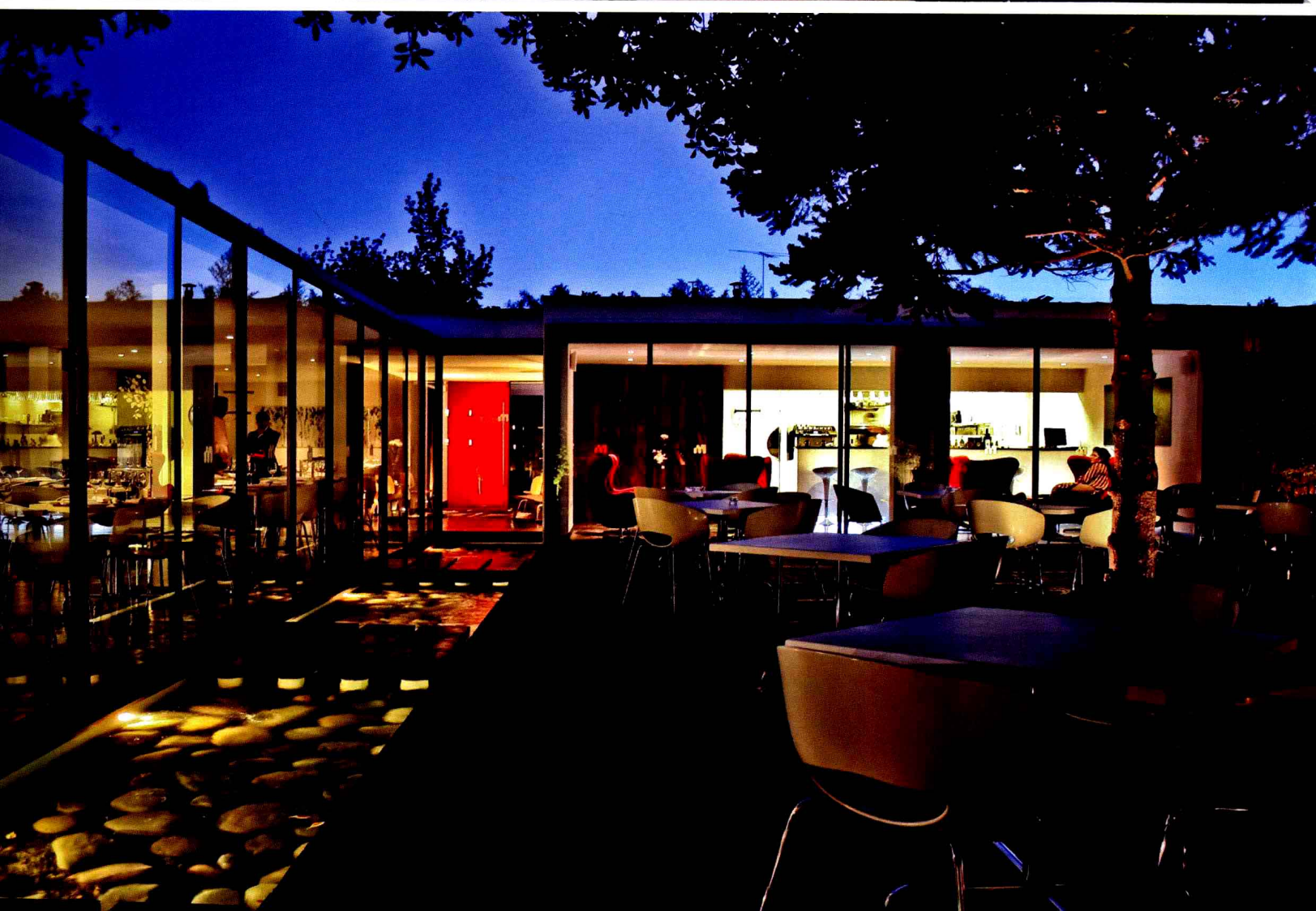
Completion Date / 竣工时间: 2007

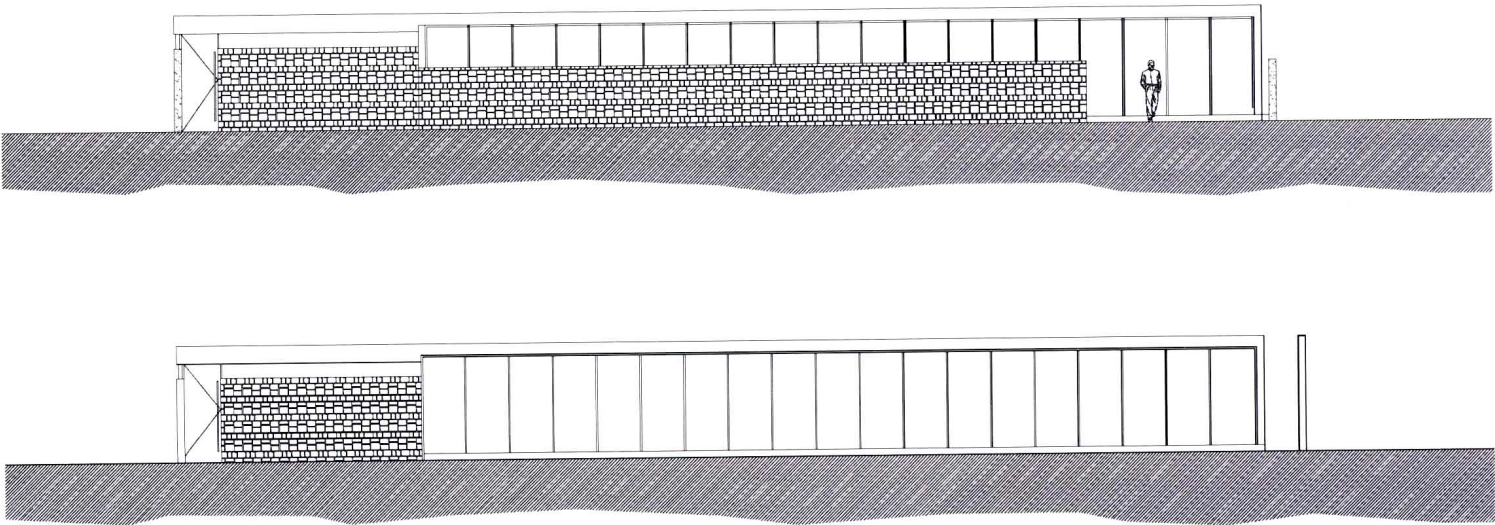
Design Company / 设计公司: 01ARQ (www.01arq.com)

Designer / 设计师: Cristian Winckler, Pablo Saric, Felipe Fritz

Photographer / 摄影师: ©Aryeh Kornfeld







这个250 m²的餐馆位于智利首都圣地亚哥的东部。这个地区有很多艺术和设计博物馆，也是行人密集的区域。设计力求将街道空间与庭院内部空间在视觉上连接起来，使得该公共空间的周边被一个连续的透明线条包围起来。

设计师用一个鱼池将阳光反射到顶棚上，使夏季的室内充满活泼气氛。装饰材料被简化到极点，只用了装饰地板、主入口处的木材、铺设地面的黑色石材和白色泥灰。

The 250 m² restaurant is located in the east side of Santiago de Chile. The area, mostly dedicated to art and design exhibitions, has an intense pedestrian activity. The design strategy focuses on the visual continuity between the street and the interior patio, to achieve this effect the perimeters of the public areas were surrounded by a continuous transparent strip.

A fish pond reflects the sun light on the main saloon ceiling and helps to create a fresh atmosphere during the summer season. Materials choices were reduced to minimum, wood for the interior deck and main access, black stone for floor covering and white stucco.

