

汉英双语

FAMOUS CHINESE MYTHS SERIES

Nüwa Creating Human Beings

Retold by Duan Lixin
Illustrated By Xu Kai

女娲造人



CHINA INTERCONTINENTAL PRESS

FAMOUS CHINESE MYTHS SERIES

Nüwa Creating Human Beings

女娲造人



Retold by Duan Lixin / Illustrated By Xu Kai



CHINA INTERCONTINENTAL PRESS

图书在版编目 (CIP) 数据

女娲造人 : 汉英对照 / 段立欣编著 ; 徐凯绘画. -- 2版.

-- 北京 : 五洲传播出版社, 2016.1

(中国著名神话故事绘本系列)

ISBN 978-7-5085-3308-7

I. ①女… II. ①段… ②徐… III. ①儿童文学—图画故事—
中国—当代 IV. ①I287.8

中国版本图书馆CIP数据核字(2015)第302131号

策 划: 荆孝敏 吕蕾

编 写: 段立欣

翻 译: 维多利亚(澳)

译文审读: 邵达

绘 画: 徐凯

责任编辑: 王莉

装帧设计: 李玲玲

女娲造人

出版发行: 五洲传播出版社

社 址: 北京市海淀区北三环中路31号生产力大楼B座6层

发行电话: 010-82005927 010-82007837

网 址: www.cicc.org.cn www.thatsbooks.com

制版单位: 北京白银时代文化发展有限公司

印 刷: 北京尚唐印刷包装有限公司

开 本: 889毫米×1194毫米 1/16

印 张: 2

版 次: 2016年1月第2版 2016年1月第2次印刷

书 号: ISBN 978-7-5085-3308-7

定 价: 30.00元

FAMOUS CHINESE MYTHS SERIES

Nüwa Creating Human Beings

女娲造人



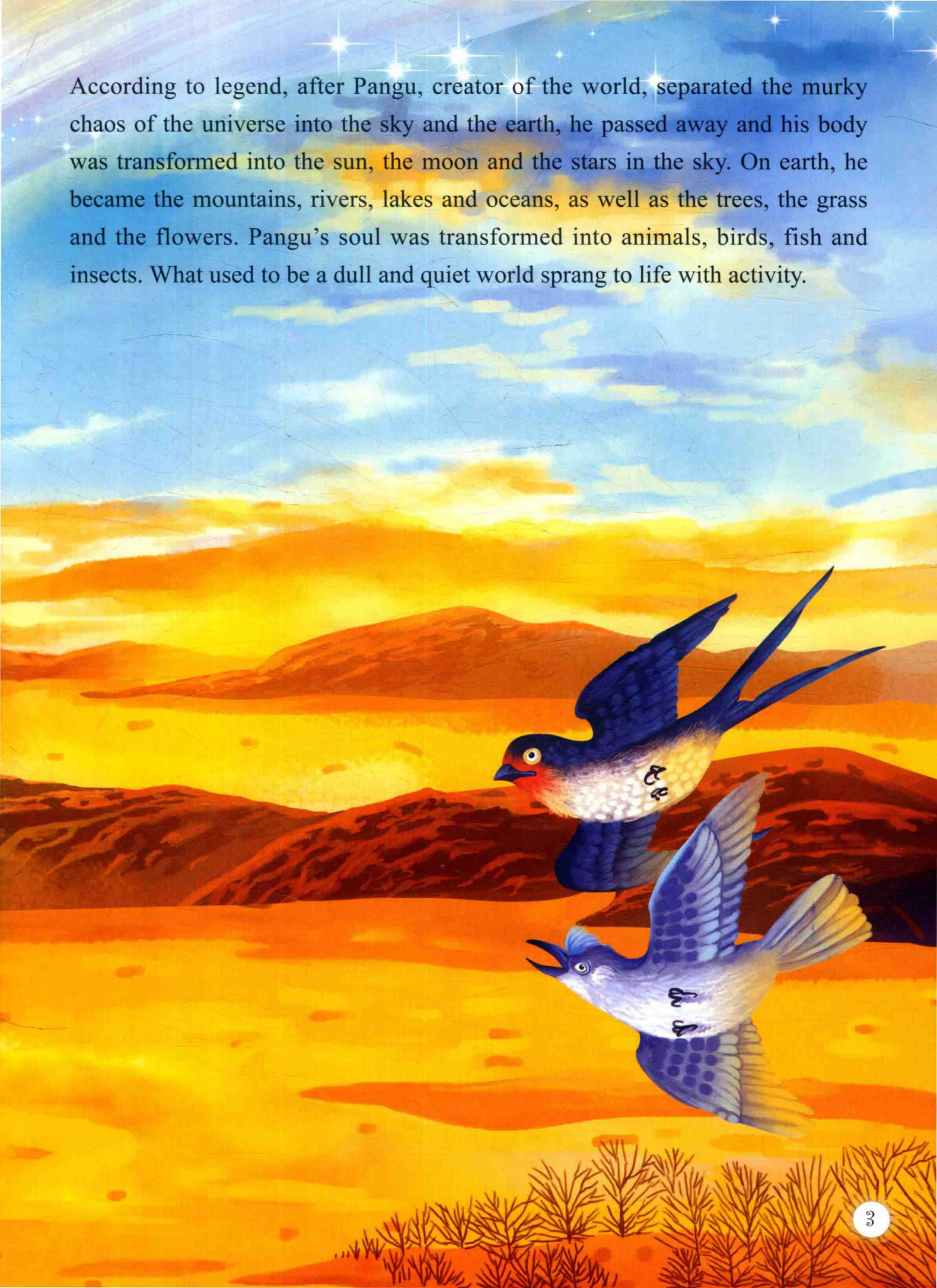
Retold by Duan Lixin / Illustrated By Xu Kai

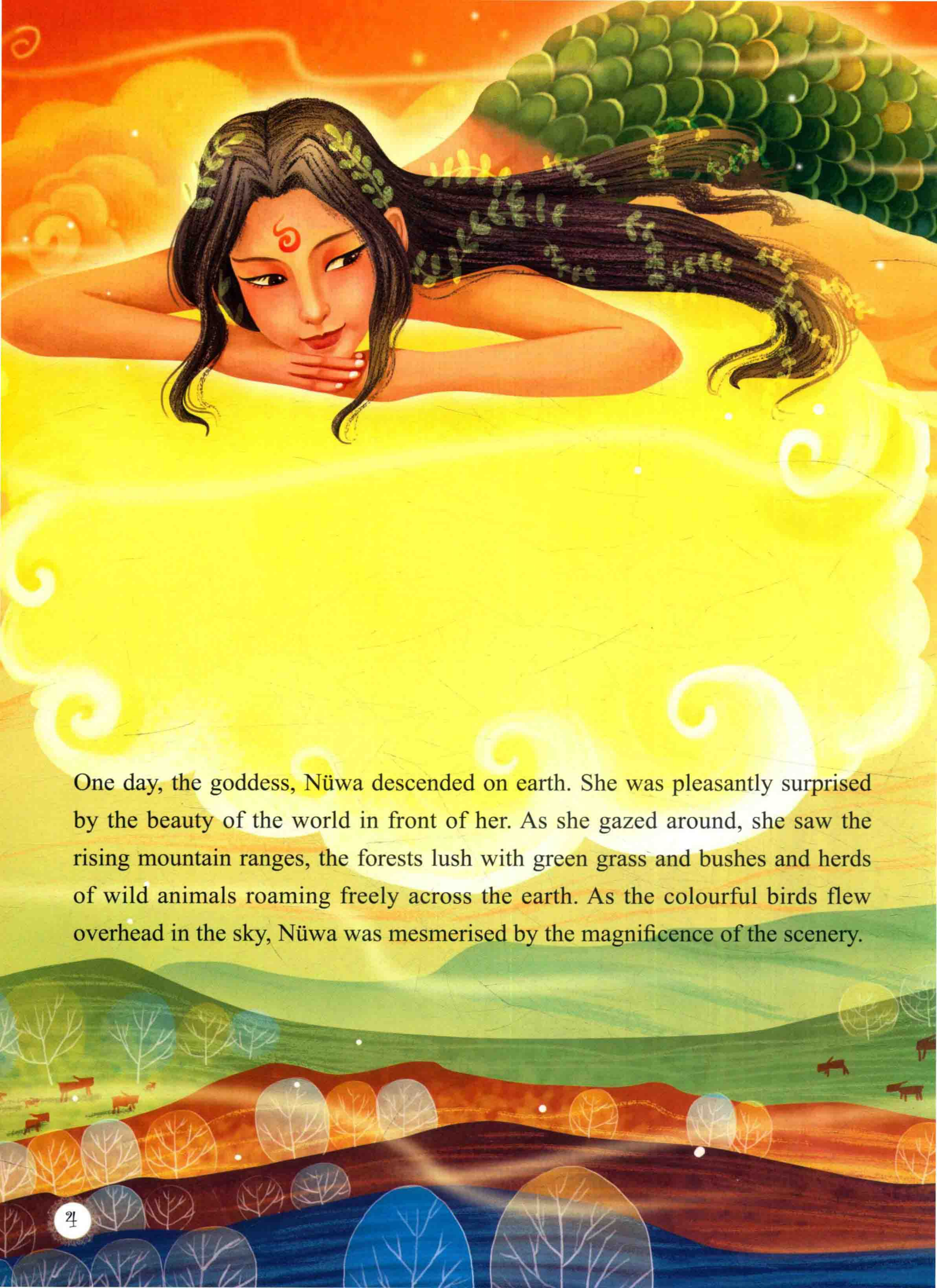


CHINA INTERCONTINENTAL PRESS



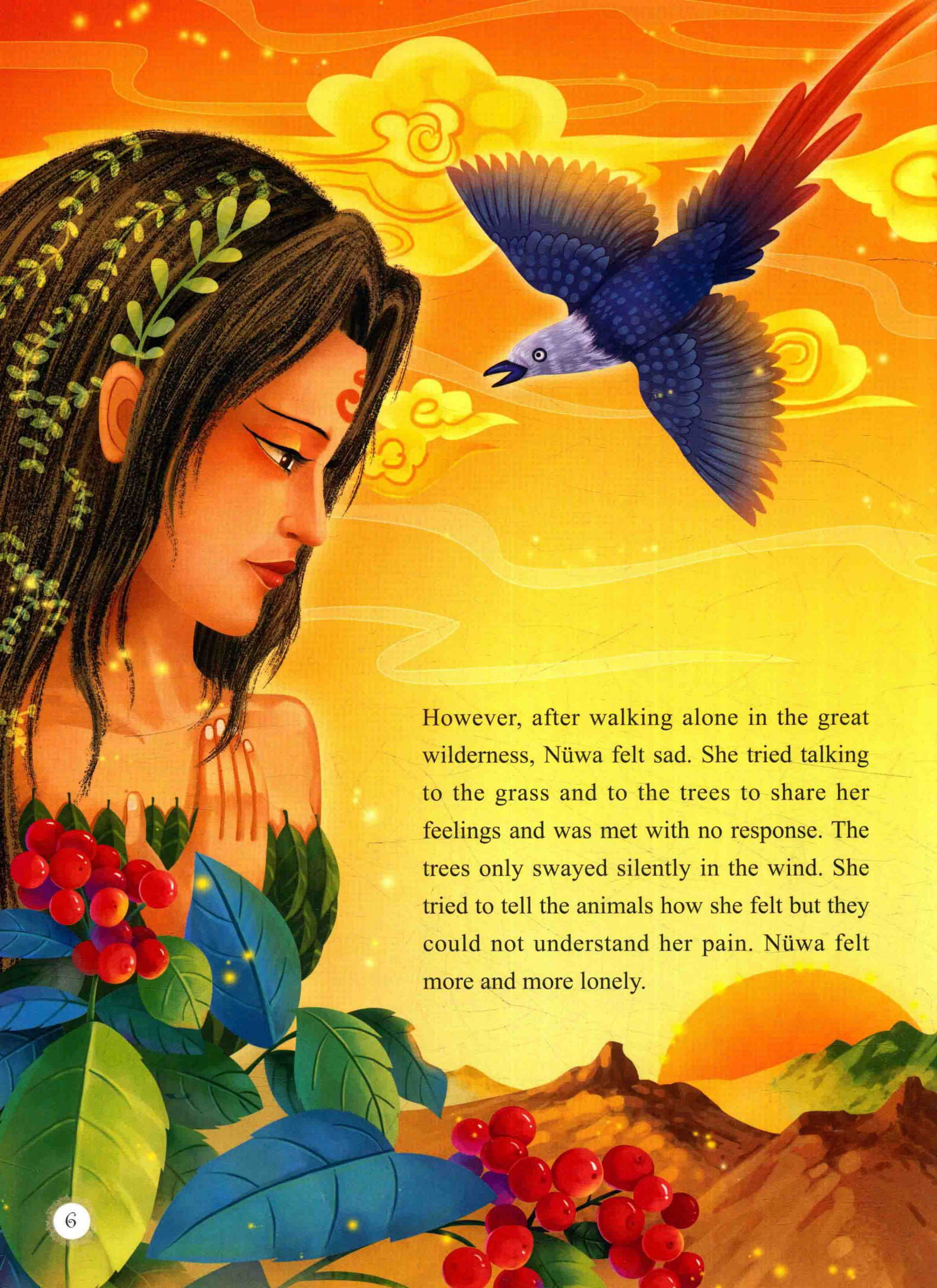
According to legend, after Pangu, creator of the world, separated the murky chaos of the universe into the sky and the earth, he passed away and his body was transformed into the sun, the moon and the stars in the sky. On earth, he became the mountains, rivers, lakes and oceans, as well as the trees, the grass and the flowers. Pangu's soul was transformed into animals, birds, fish and insects. What used to be a dull and quiet world sprang to life with activity.





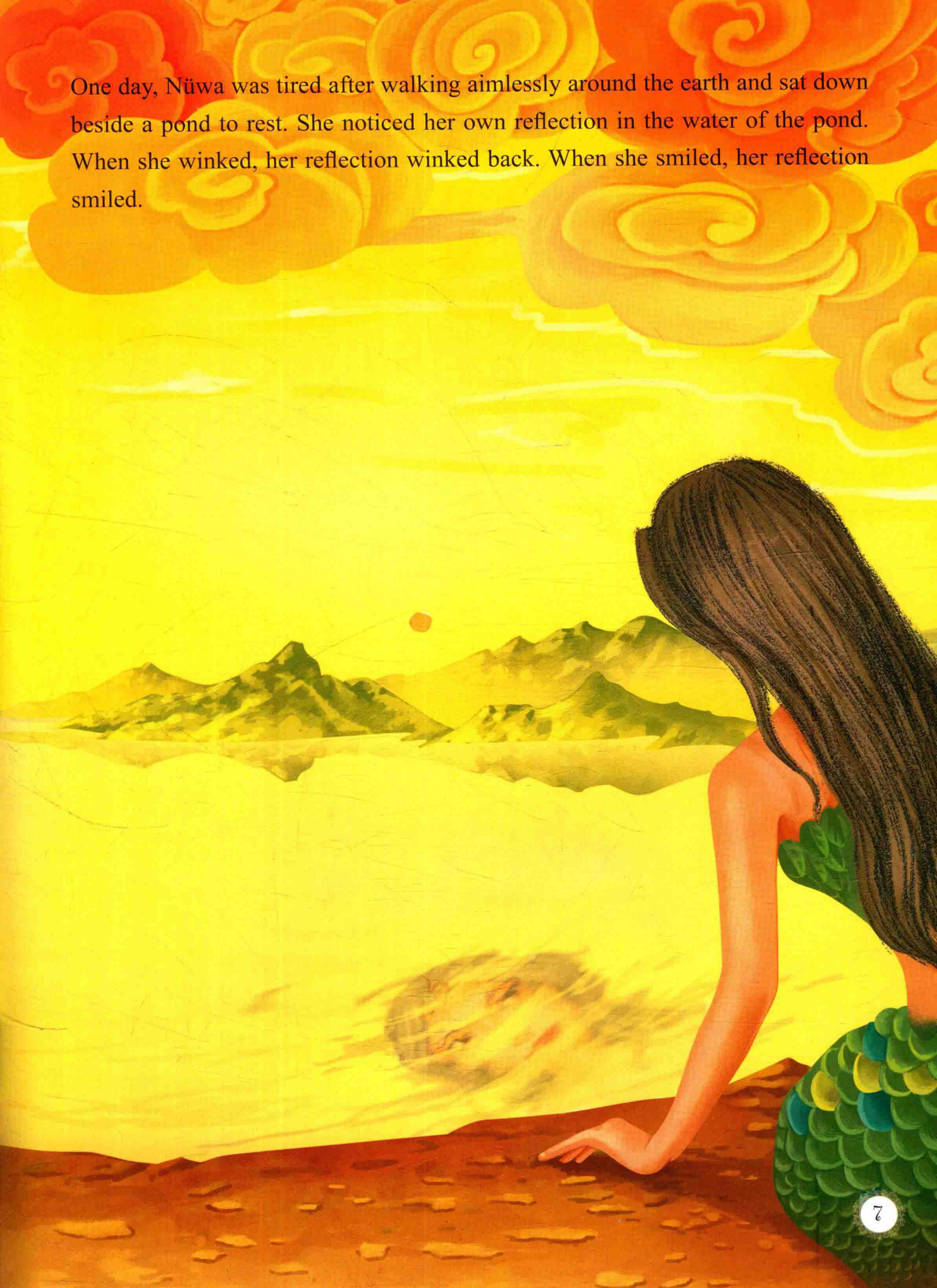
One day, the goddess, Nüwa descended on earth. She was pleasantly surprised by the beauty of the world in front of her. As she gazed around, she saw the rising mountain ranges, the forests lush with green grass and bushes and herds of wild animals roaming freely across the earth. As the colourful birds flew overhead in the sky, Nüwa was mesmerised by the magnificence of the scenery.

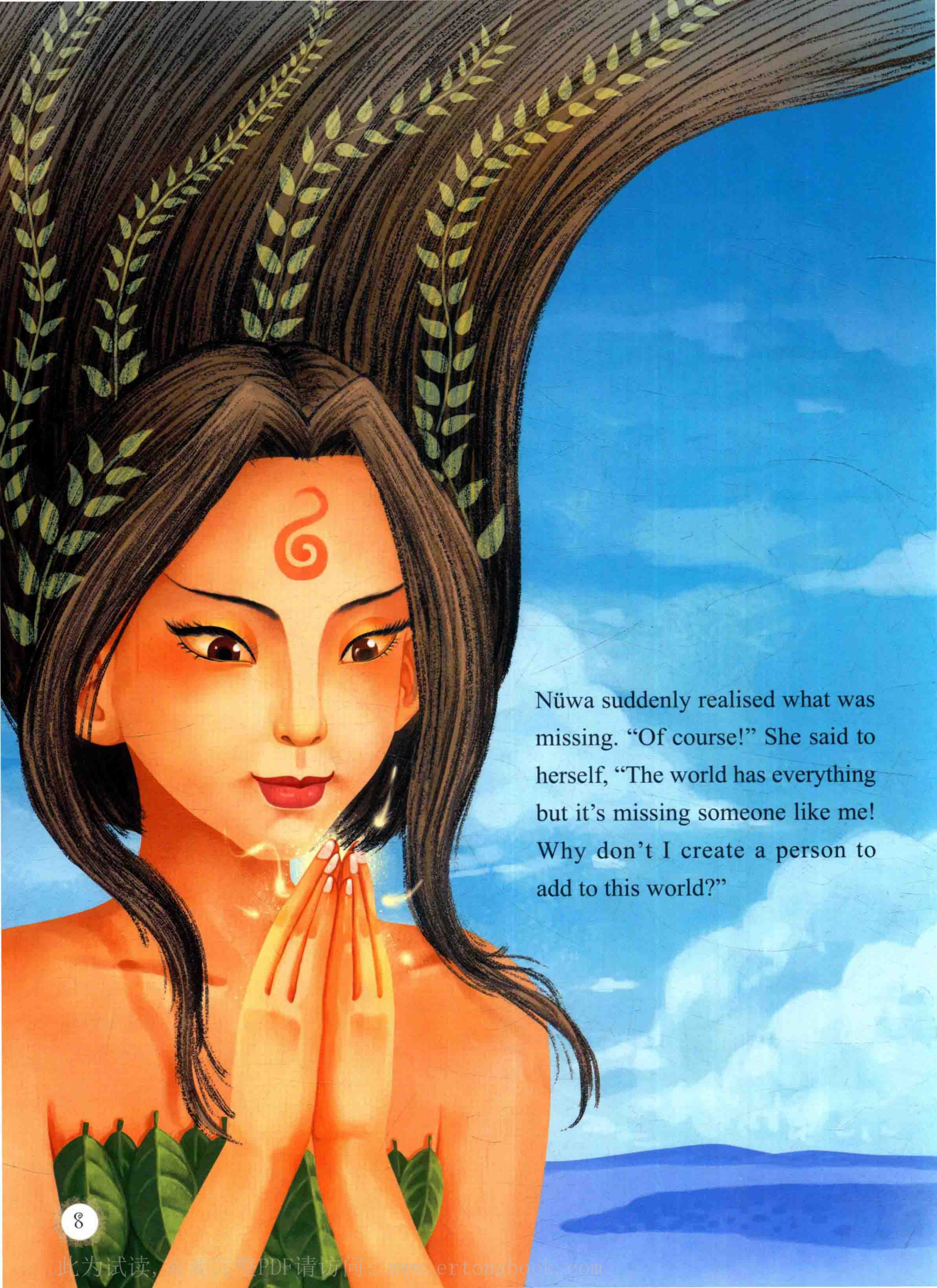




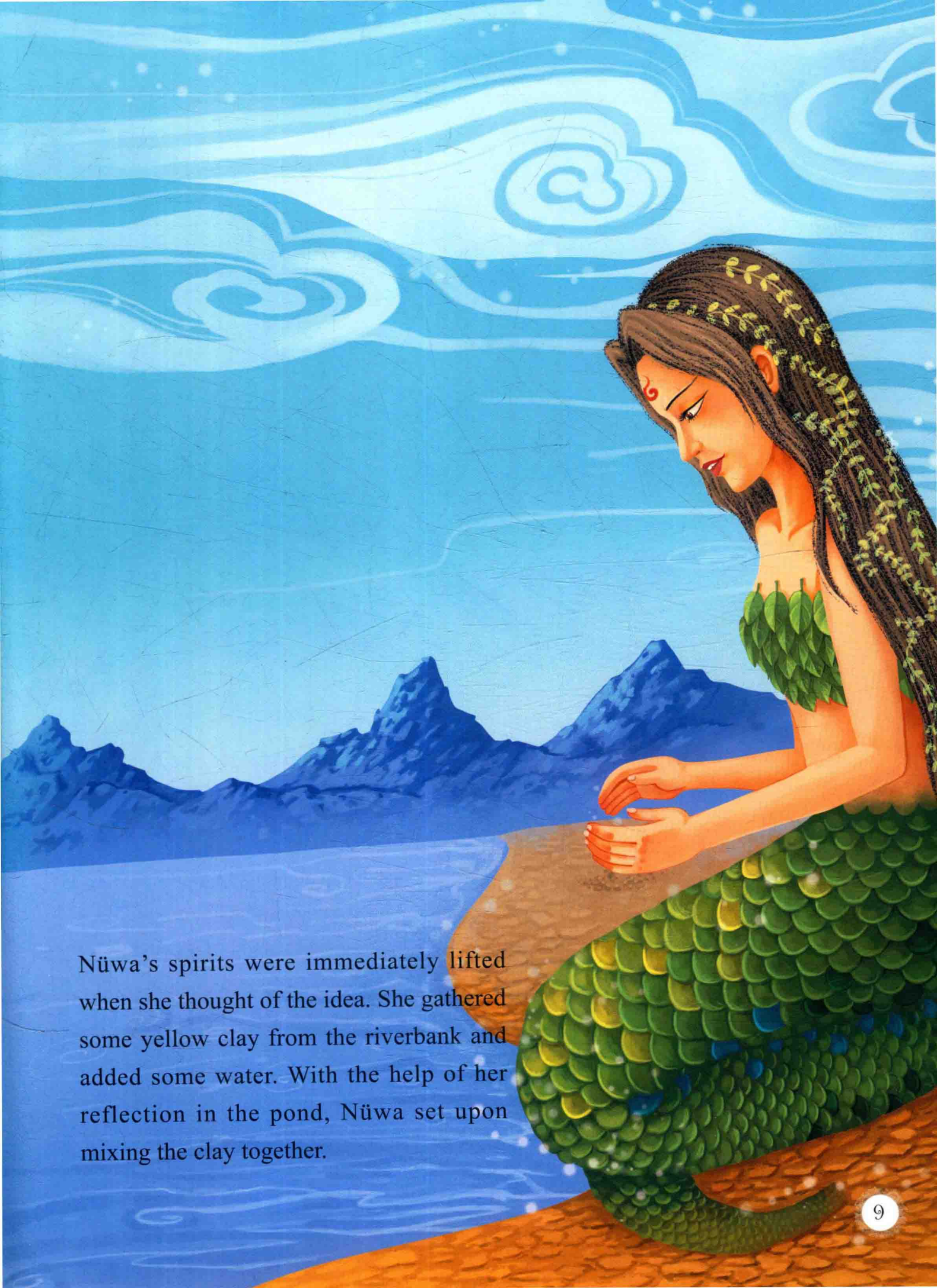
However, after walking alone in the great wilderness, Nüwa felt sad. She tried talking to the grass and to the trees to share her feelings and was met with no response. The trees only swayed silently in the wind. She tried to tell the animals how she felt but they could not understand her pain. Nüwa felt more and more lonely.

One day, Nüwa was tired after walking aimlessly around the earth and sat down beside a pond to rest. She noticed her own reflection in the water of the pond. When she winked, her reflection winked back. When she smiled, her reflection smiled.

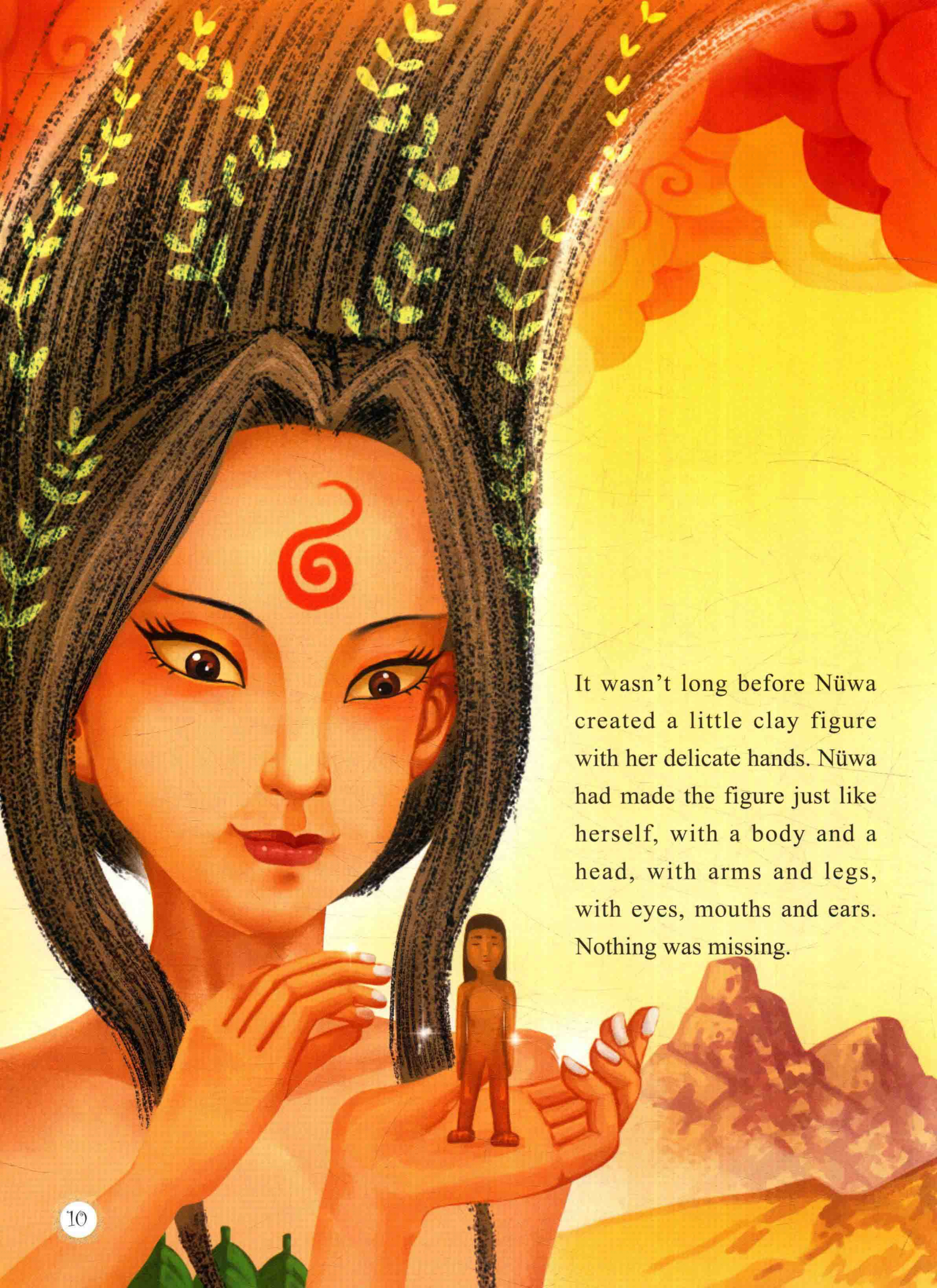




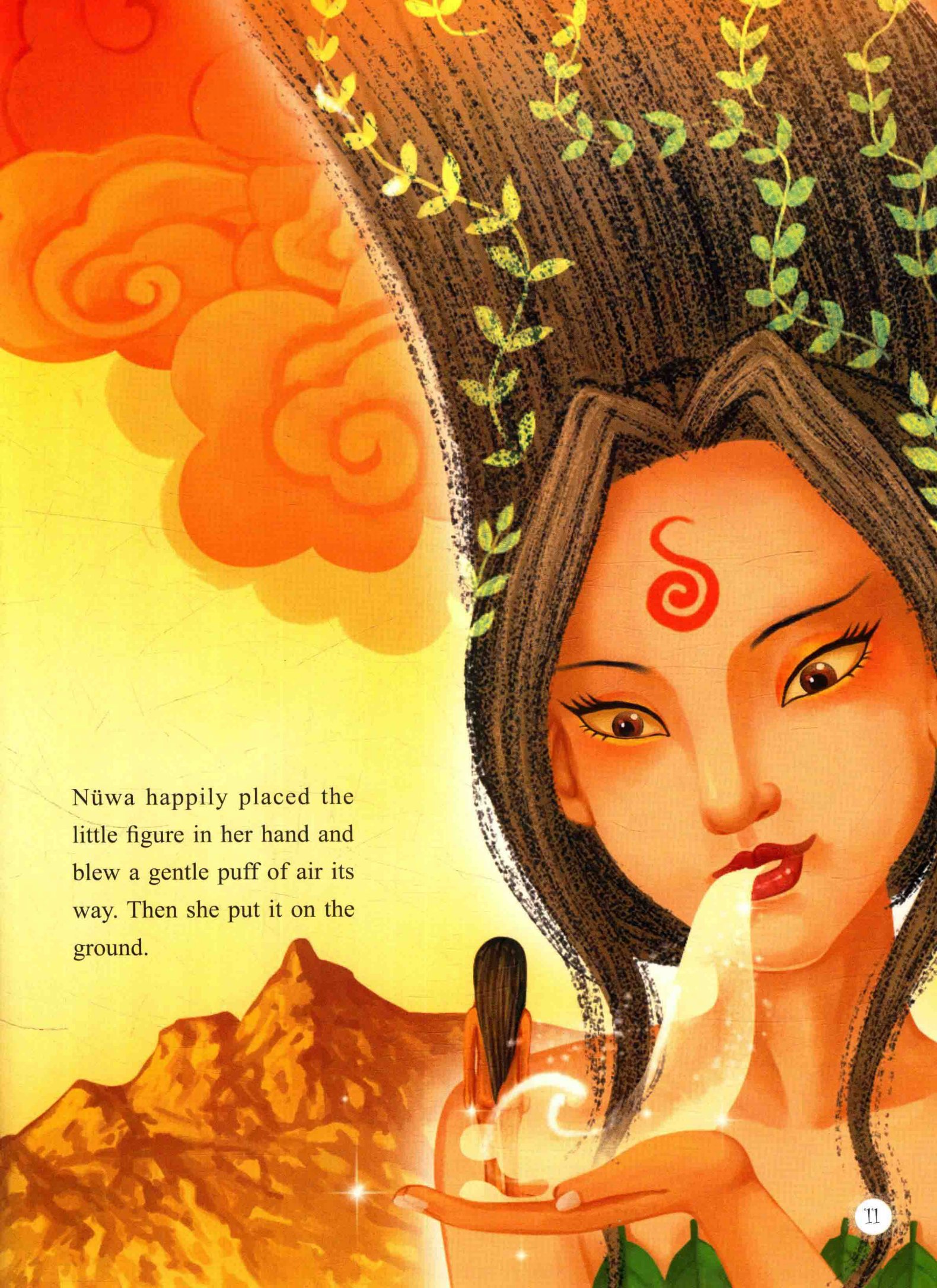
Nüwa suddenly realised what was missing. “Of course!” She said to herself, “The world has everything but it’s missing someone like me! Why don’t I create a person to add to this world?”



Nüwa's spirits were immediately lifted when she thought of the idea. She gathered some yellow clay from the riverbank and added some water. With the help of her reflection in the pond, Nüwa set upon mixing the clay together.



It wasn't long before Nüwa created a little clay figure with her delicate hands. Nüwa had made the figure just like herself, with a body and a head, with arms and legs, with eyes, mouths and ears. Nothing was missing.



Nüwa happily placed the little figure in her hand and blew a gentle puff of air its way. Then she put it on the ground.

Magically, the little figure came to life once its feet touched the ground. It stretched its little arms and legs and curiously looked around the colourful world that surrounded her. Then, when she saw Nüwa, she shouted with happiness and excitement, “Mother! Mother!”





When Nüwa saw her own creation come to life, Nüwa was filled with joy and happiness. She called this lovely little figure a “human”. Since it had been created in imitation of a deity, Nüwa decided that the human would have its own thoughts and emotions and language, unlike the animals that already walked the earth.

