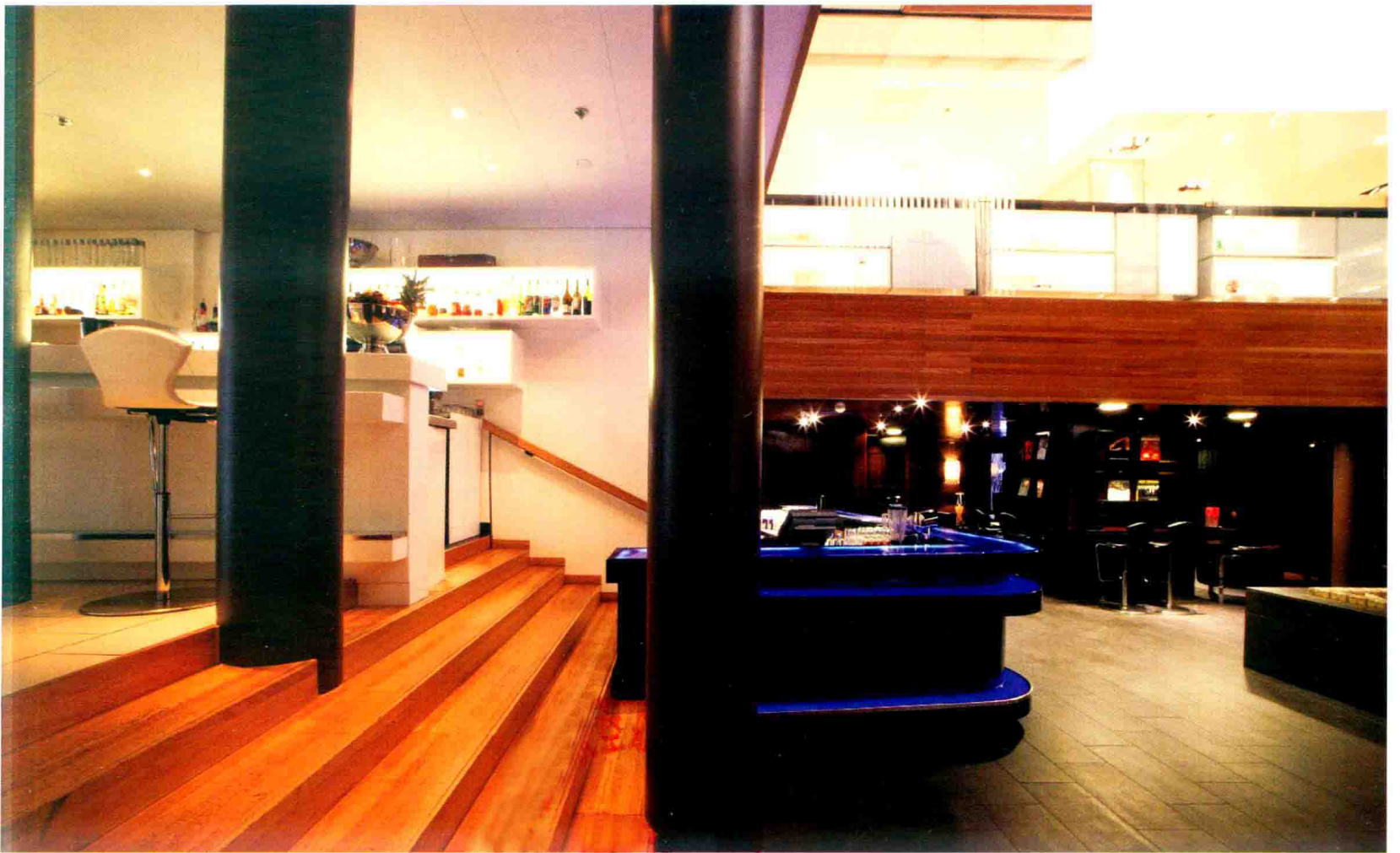


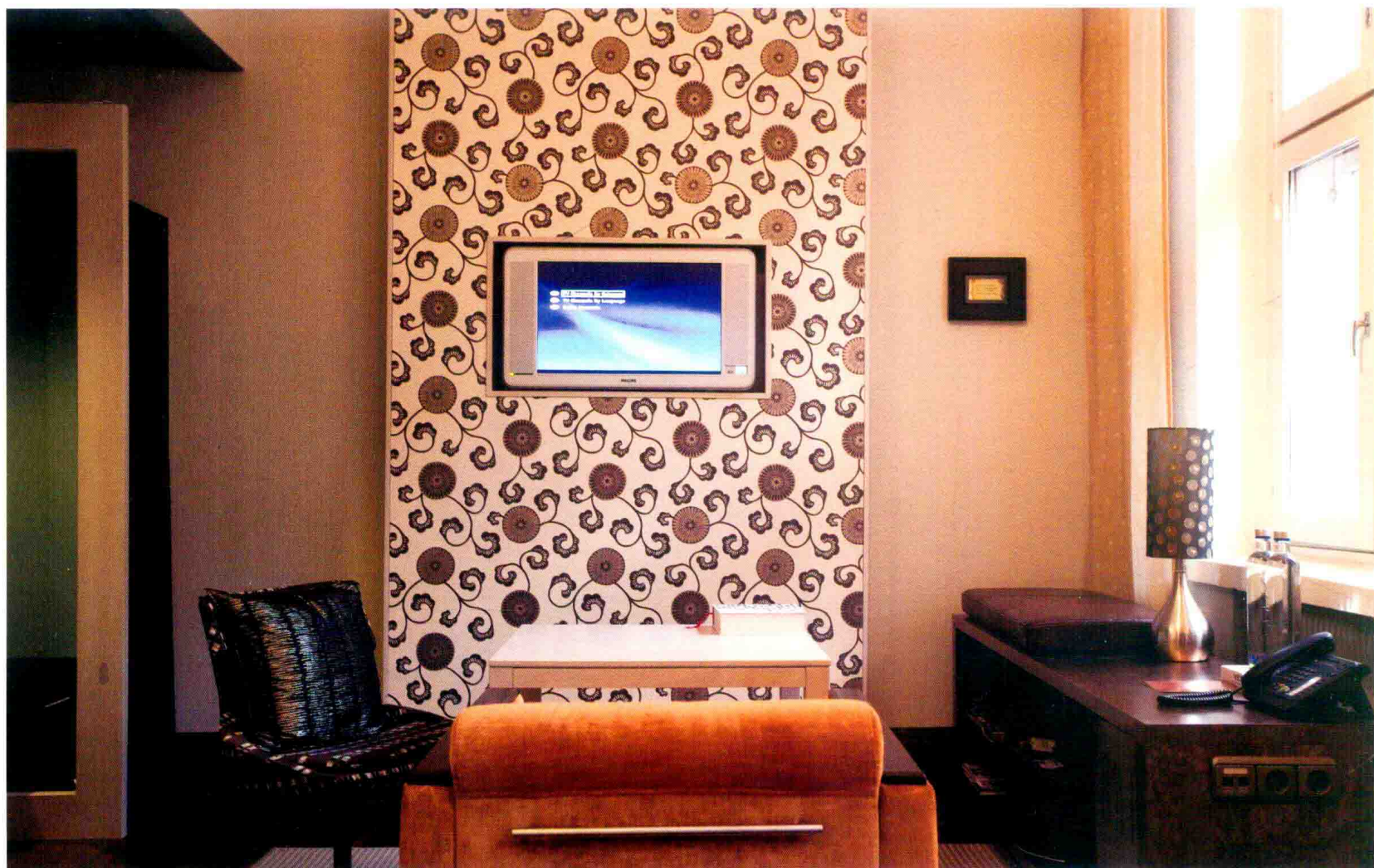
# Commercial Architecture Design

## 经典商业空间设计

《经典商业空间设计》编辑组 编 张晨 译

辽宁科学技术出版社









# The Dominican Hotel

## 多米尼加酒店

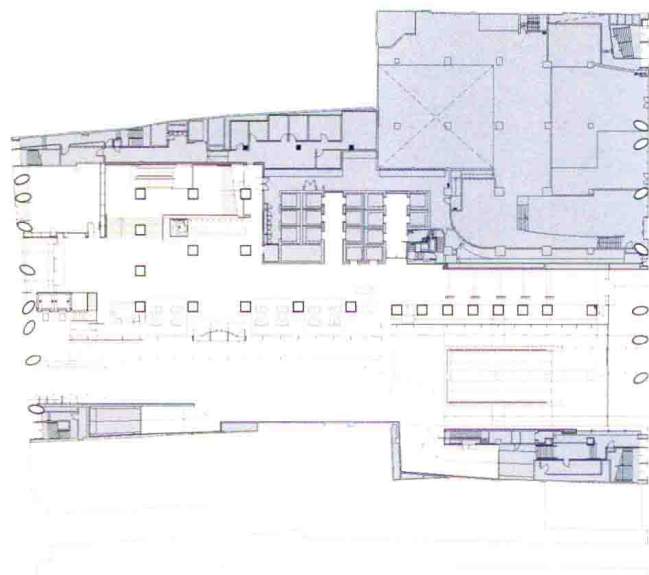
**Project Name:** The Dominican Hotel **Designer:** Lens Ass Architects **Location:** Brussels, Belgium  
**Photographer:** Lens Ass Architects **Time:** 2007 **Area:** 1000 sqm

项目名称: 多米尼加酒店 设计师: 水晶艾斯设计有限公司 项目地点: 比利时, 布鲁塞尔 摄影: 水晶艾斯设计有限公司  
完成时间: 2007年 面积: 1000平方米

Tucked behind Brussels' famous theatre and opera house, The Dominican is a new hotel that offers a strong sense of history mixed with forward-thinking, eclectic design in the European Union's capital city. The hotel's sweeping archways are a clear reference to a Dominican abbey that stood on this site in the 15th century. Its original facade has been integrated into the new construction by the Belgian Firm Lens Ass Architects. Guests enter the lofty, high-ceilinged public spaces and their breath is taken away by the attention to detail. A stroll through the Monastery Corridor evokes an almost medieval feeling of elegance with original Belgian stone flooring. The Grand Lounge, considered the heart of the hotel, calls to mind the spirit of old European decadence in soaring windows and metalwork at the same time as attracting a definitively style-conscious modern clientele with its cutting-edge design. The 150 guestrooms and suites – each with an individual look – are situated around a quiet inner courtyard and feature a rich combination of contemporary design and luxurious textiles, offering quiet comfort in a cloister-like setting. It's a wonderful respite from the Continent's new governmental hub, and a space in which old and new Europe effortlessly melds.

坐落于布鲁塞尔著名的剧院和歌剧院的后身，多米尼加是一个崭新的酒店，营造了很强的历史氛围，同前瞻性的思想和欧洲联盟不拘一格的设计融合在一起。酒店的宽大的拱门可以让人们很自然的联想到十五世纪位于这里的多米尼加修道院。在比利时水晶艾斯设计公司的精心策划下独具匠心，它原来的门面已经被嵌入到新的建筑之中。客人们来到举架高大宽敞的公共空间，这里的细节设计令人们叹为观止，留有原始比利时石阶的地板向人们彰显着中世纪的典雅风格。奢华的休息大厅，可谓是酒店的中心所在，高悬的宽大窗户和金属摆设令人回想起古代欧洲颓废的奢华，最终奠定了这种边缘设计的地位。

150个房间和套房，各具特色——分布在一个幽静的庭院之中，展现了现代时尚设计同豪华纺织饰品的完美融合，营造了一种舒适的氛围。这是一个世外桃源，是欧洲古典于现代元素完美结合的产物。













# Jeronimos Hotel

## 杰尼贸酒店

**Project Name:** Jeronimos Hotel **Designer:** Capinha Lopes & Associates **Location:** Lisbon, Portugal **Photographer:** Sofia Tavares **Time:** 2007 **Area:** 1200 sqm

项目名称: 杰尼贸酒店 设计师: 凯品哈设计有限公司 项目地点: 葡萄牙, 里斯本 摄影: 索菲亚 完成时间: 2007年 面积: 1200平方米

Where the tidal waters of the Atlantic flow into the estuary of the Tagus River, old and new come together in the hotel Jeronimos. Located in Lisbon's historic district and surrounded by museums and monuments, the 1940s building has been given new life by the Lisbon based architects Capinha Lopes & Associates, whose renovation of the hotel liaises with its surroundings. The ornate gables, statues and relief of the nearby 16th century Jeronimos Monastery accentuate the modern renovation. Windows afford a view of the monastery from the hotel's wine bar, where one can taste the rare and much sought, after Bussaco wine that has been produced for generations by the Alex and rede Almeida family, which also owns the hotel. As if to reflect the wines, the bar is designed in a rich savoury palette of red, white and brown, with a dark wood floor and floating lamps.

The welcoming reception desk — a lustrous, dark chocolate cube of wood before a crimson wall — greets guests in the same colour scheme. Each of the 65 rooms and suites has a pale marble bath room generously bathed in natural light. Throughout the hotel, the abundance of natural lighting blends the interior with the Lisbon sky outside.

坐落于里斯本这座古老的城市，被博物馆和名胜古迹环绕，位于大西洋的水流入到塔霍河河口，这就是融合了古老与现代元素的杰尼贸酒店。这座19世纪40年代的古老建筑在凯品哈设计公司的设计下被赋予了新的灵魂，同周围的建筑遥相呼应。装饰华丽的尖顶屋两端的山形墙雕塑以及周围的16世纪的杰尼贸修道院，共同映衬了其翻新后的时尚气息。从酒店酒吧的窗户可以将修道院的景观尽收眼底，在品尝过巴萨克酒之后，这里人们可以享受各色美食，巴萨克酒曾经是亚历克斯家族代代相传的。仿佛是为了衬托葡萄酒，酒吧的主题色调采用艳丽的红色、白色和褐色，深色的木质地板和浮动的吊灯。

酒店接待处的设计是在深红色墙的前面摆放了巧克力形状的、暗色的、光泽感很强的接待台，从色彩上让顾客感觉到一种暖意。65个房间中的任何一个房间和套间都设计有一个浅色的大理石的浴室，可以让您自由地沐浴在自然光之下。整个酒店都沐浴在里斯本天空下的阳光和室内的自然光线之下。

