

世界建筑 15

World Architecture

Education Building

教育建筑设计

建筑文化



清华大学出版社
Tsinghua University Press

世界建筑 15

World Architecture

Education Building

教育建筑设计

佳图文化 编



华南理工大学出版社
SOUTH CHINA UNIVERSITY OF TECHNOLOGY PRESS

· 广州 ·

图书在版编目 (CIP) 数据

世界建筑. 15, 教育建筑设计: 英文 / 佳图文化编. —广州: 华南理工大学出版社, 2014. 1
ISBN 978-7-5623-4091-1

I. ①世… II. ①佳… III. ①教育建筑—建筑设计—作品集—世界—英文 IV. ①TU206

中国版本图书馆 CIP 数据核字 (2013) 第 257889 号

世界建筑 15: 教育建筑设计

佳图文化 编

出 版 人: 韩中伟

出版发行: 华南理工大学出版社

(广州五山华南理工大学 17 号楼, 邮编 510640)

<http://www.scutpress.com.cn> E-mail: scutel3@scut.edu.cn

营销部电话: 020-87113487 87111048 (传真)

策划编辑: 赖淑华

责任编辑: 陈 昊 孟宪忠

印 刷 者: 广州市中天彩色印刷有限公司

开 本: 889mm×1194mm 1/16 印张: 17

成品尺寸: 245mm×325mm

版 次: 2014 年 1 月第 1 版 2014 年 1 月第 1 次印刷

定 价: 298.00 元

版权所有 盗版必究 印装差错 负责调换

Preface

The Education Building is one of the most important architecture categories. In this latest collection, we've selected some key examples of Education Building Designs. We aim to include projects that are either of top quality or interesting, or ideally both. The book covers completed education buildings such as college and university buildings, libraries and art buildings across the world. With professional design materials, high-resolution photographs and clear descriptions, it well interprets every project from all the aspects which will surely bring some inspirations to the readers.

Contents

Administrative and Teaching Building

Tartu Health Care College	002
MetaForum of Eindhoven University of Technology (TU)	014
Cornelius Vermuyden School and Arts College	022
The Hong Kong Design Institute	030
Veolia Environment Campus	044
ENSTA	050
University Paris Diderot	058
School of Music and Arts	068
High School Jean Lurcat	078
Fine Arts School Attached to China Central Academy of Fine Arts	090
Paul Merage School of Business	104
The Fujian Professional Photonic Technical College	114
Holland Park School	122
NYU Department of Philosophy	130
L'Aurora-Bachelet School	144
Thomas Tallis School	154




Library Building

The University of Versailles Science Library	164
Chongqing Library	174
New Municipal Library in Greve	182

Other Education Buildings

Foros Azteca Novelas	196
HSSU Early Childhood & Parenting Education Center	210
University of Tartu Narva College	218
Groupe Scolaire Lamoriciere	232
Nursery and Communal Premises	240
Groupe Scolaire Pasteur	252
Henri Wallon Primary School	260



Administration and Education
Dominant Role
Large Volume
Single Building

Keywords

Friendly Co-existence

Gradient Rise

Brick and Timber

Tartu Health Care College

Location: Tartu, Estonia

Client: Tartu Health Care College

Architectural Design: Kavakava Architects

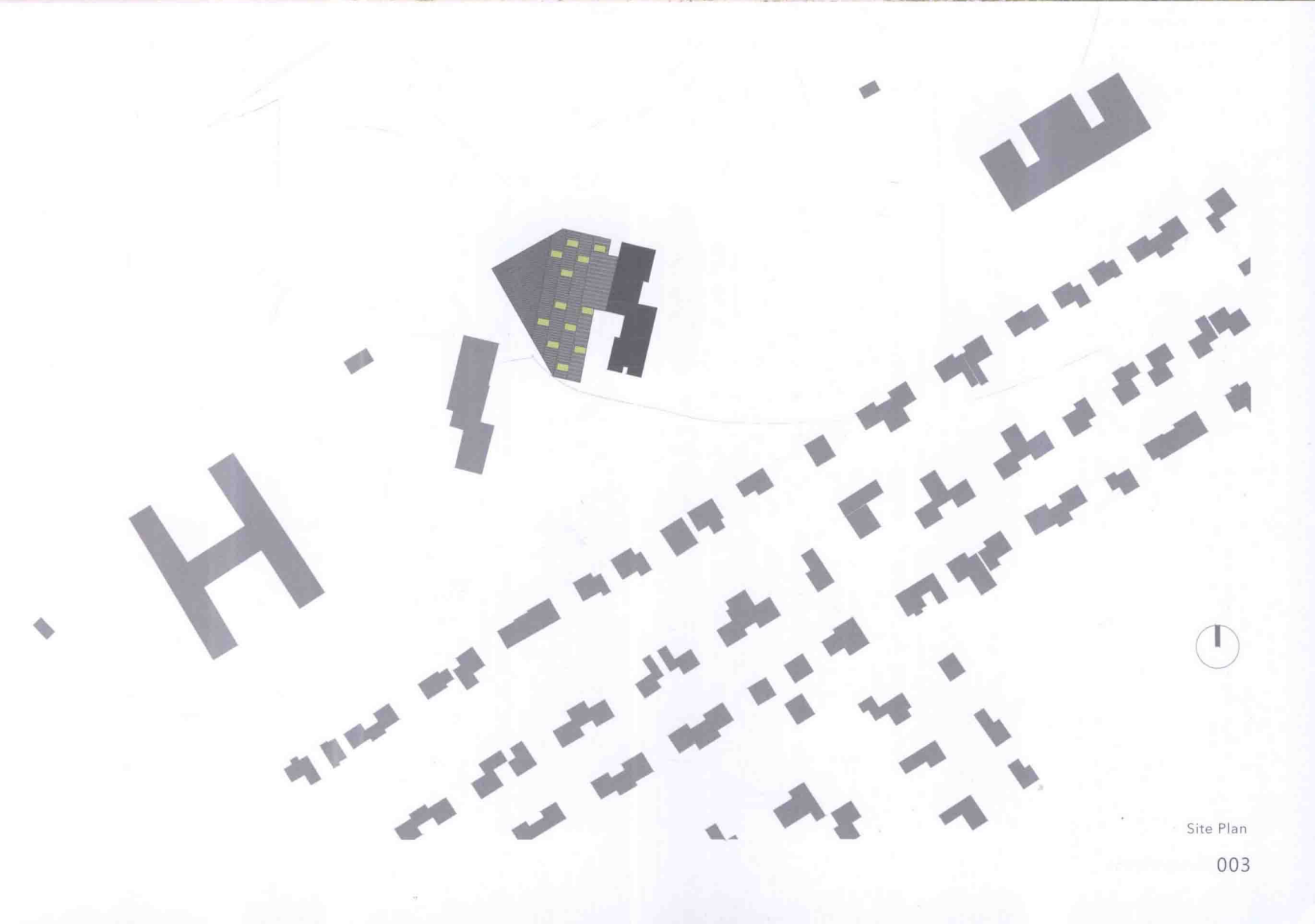
Interior Design: Tarmo Piirmets PINK

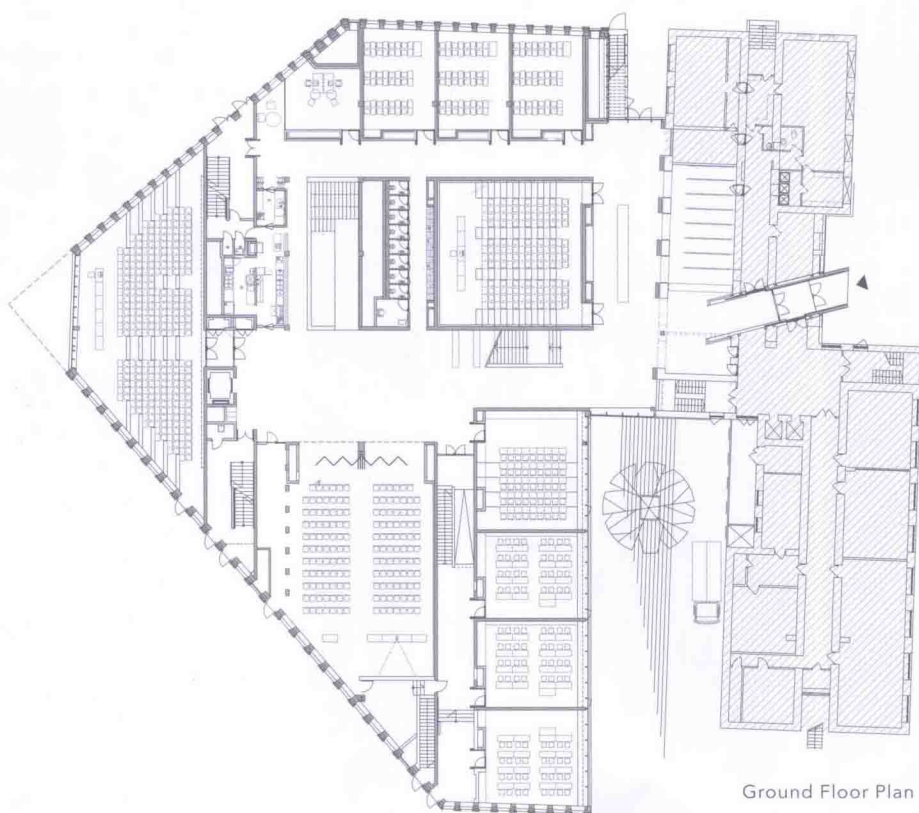
Design Team: Johannes Feld, Andro Mänd, Sten Mark Mändmaa, Ragnar Põllukivi

Site Area: 8,433m²

Floor Area: 6,480m²

The building defines a friendly co-existence between small scale private housing and large healthcare institutions in the park. The new collage building is located in between two dormitories to maintain the buffer zone between private houses and large buildings. The design solution is based on the need for sufficient natural light in all dormitories and classrooms. Each floor steps back, creating interesting interior spaces and communication with the existing dormitory. The latter side has open character with large glass surfaces whereas the more confined outward side has a red brick cladding similar to the existing dormitories. The college building tries to step into the context as a unexpected yet interesting partner.

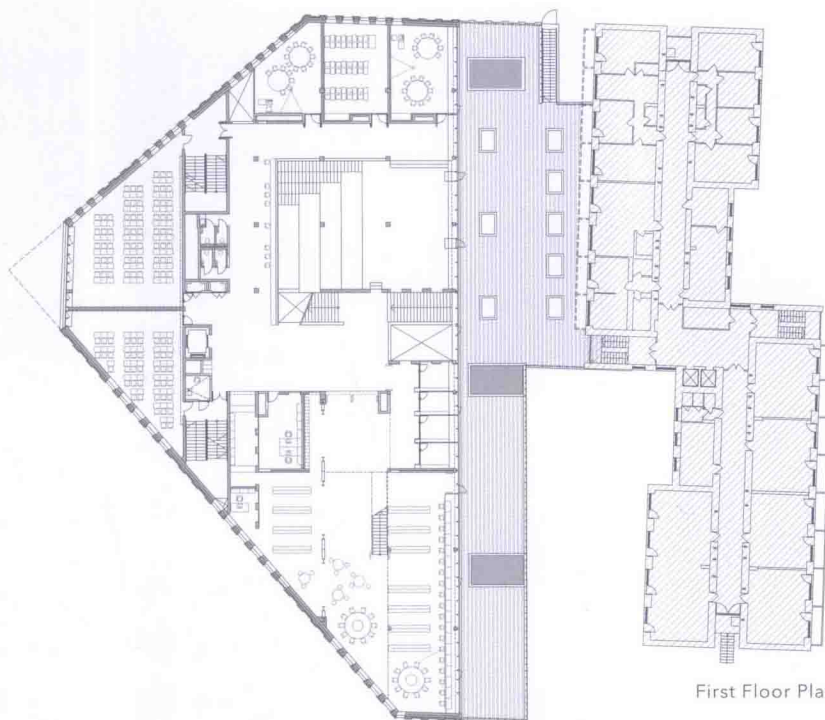




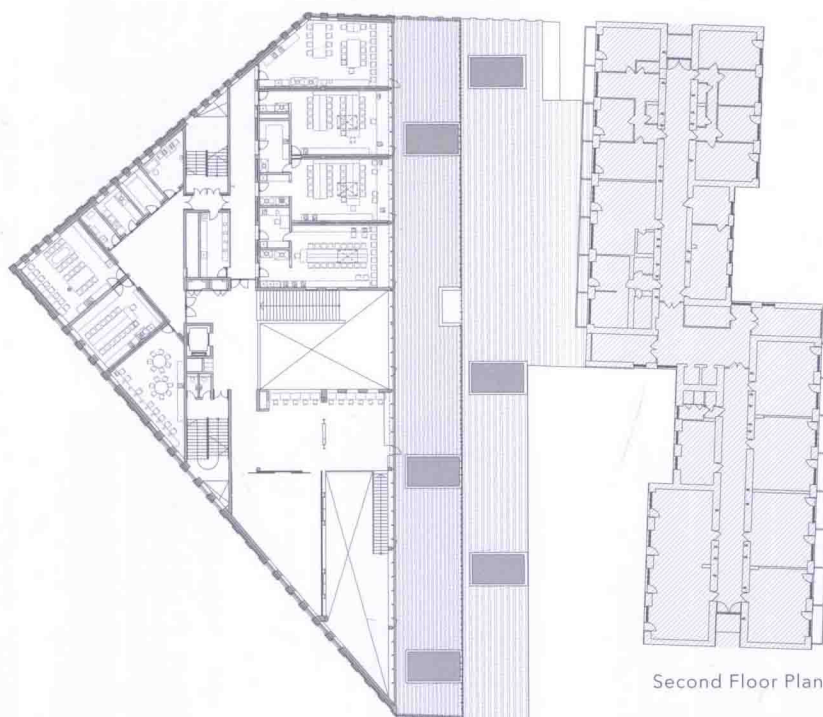
Ground Floor Plan

The new and the existing buildings are connected on ground floor level. The interior space has two defining elements: the core—a library and information centre with a cafeteria; and the big staircase, following the gradient rise of the building itself, providing visual connection of all floors and all main activities of the building.

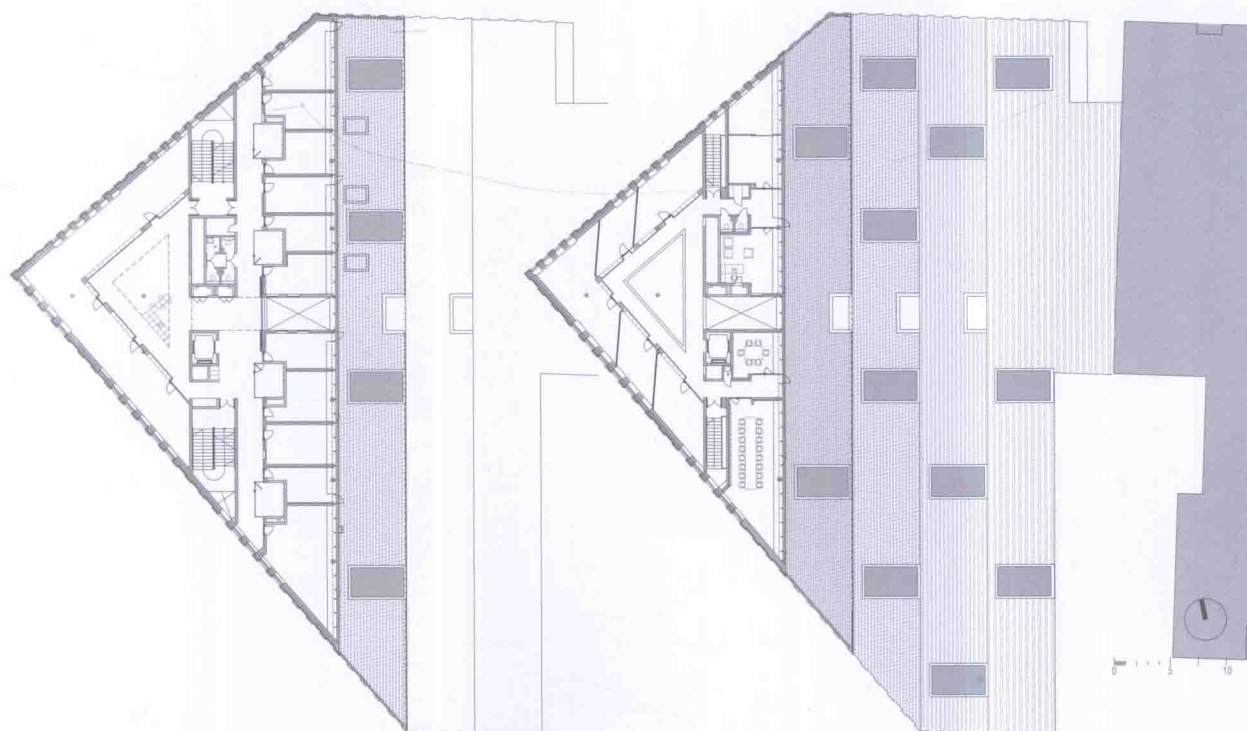
Local (brick) and renewable (timber) building materials are used. Structure has considerable thermal mass and natural ventilation options to reduce cooling costs. Building is connected to the central heating system.



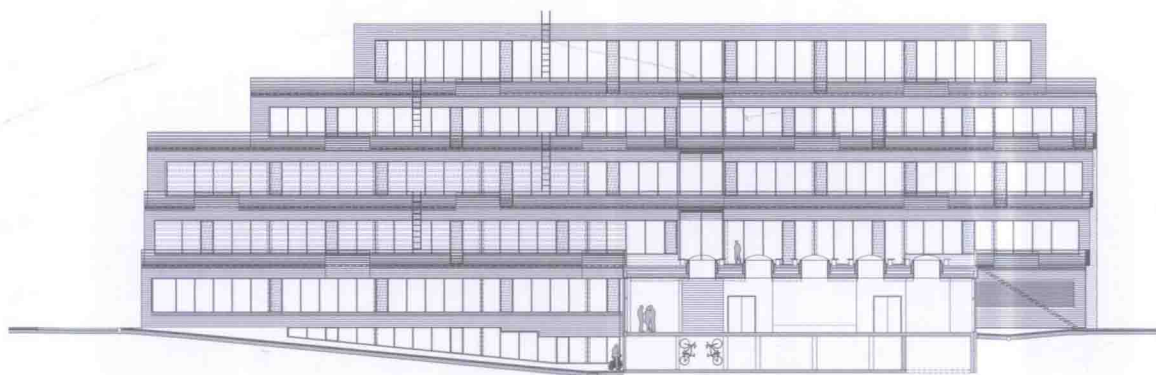
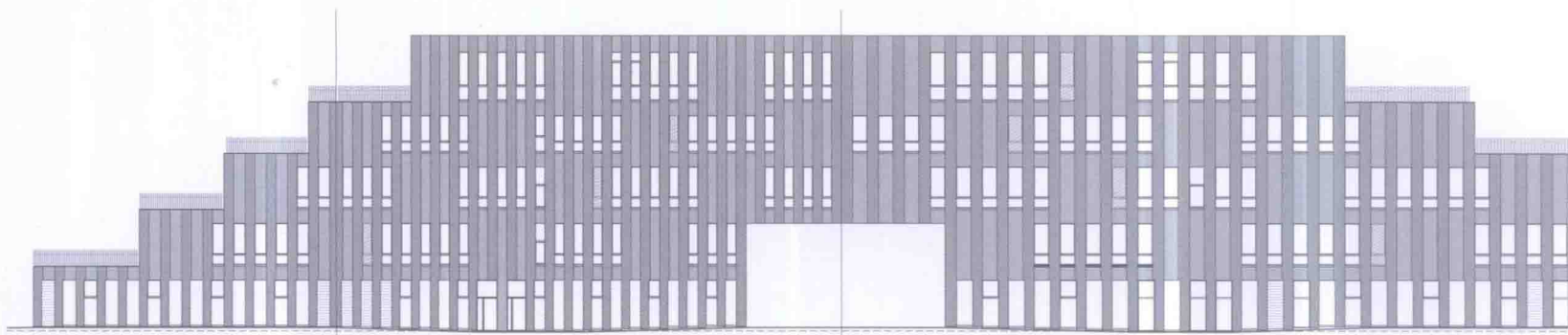
First Floor Plan



Second Floor Plan

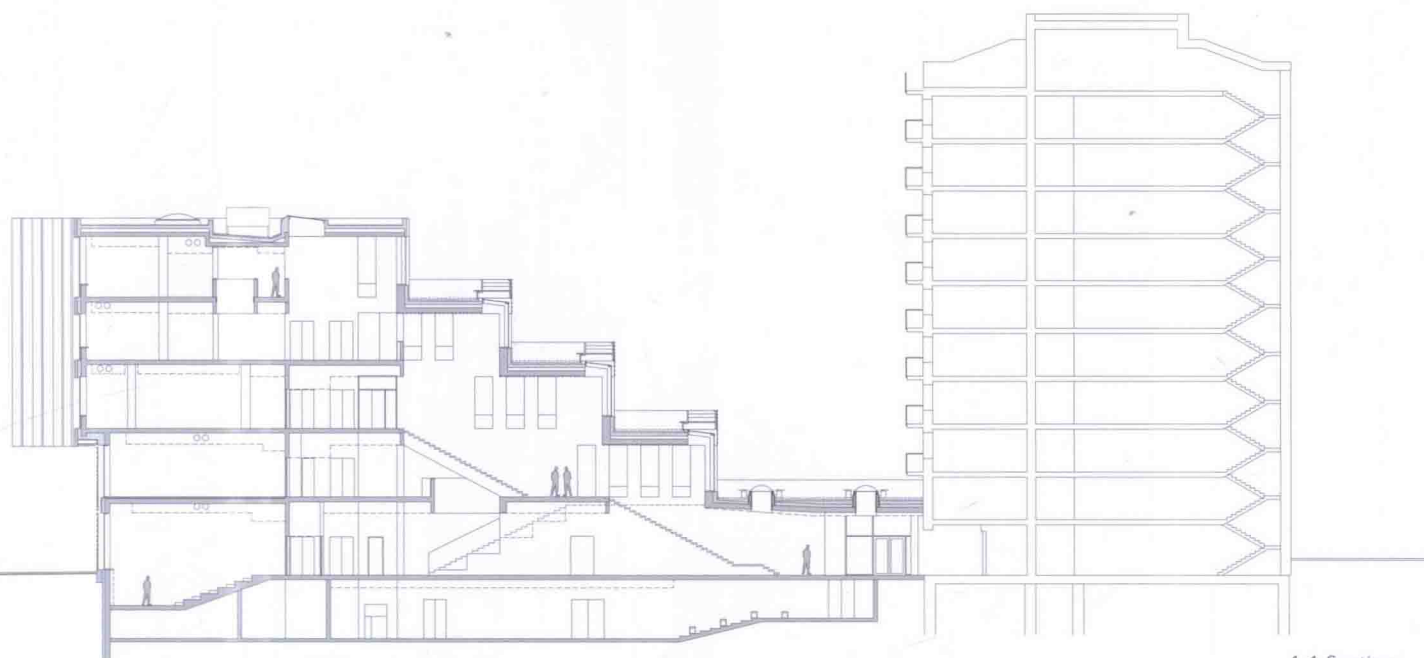


Third Floor Plan

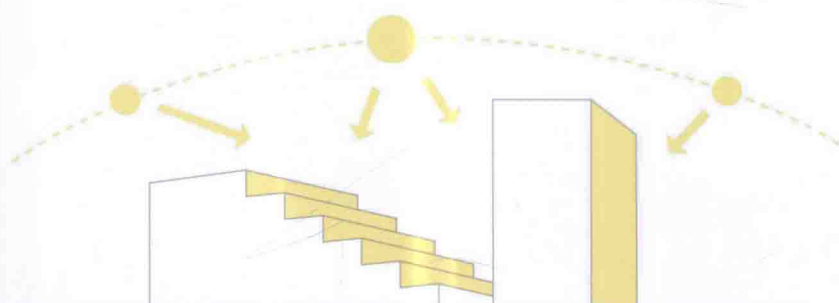


1-1 Elevation



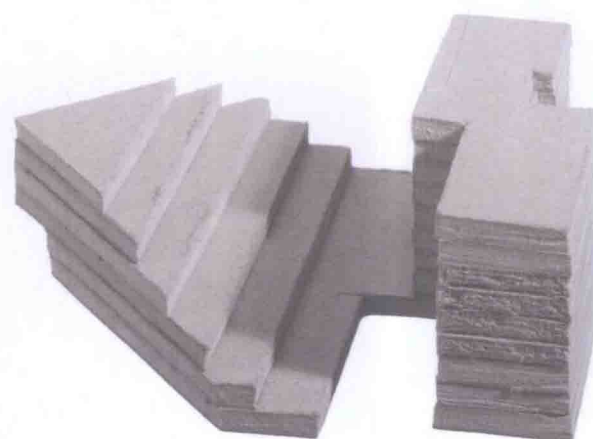
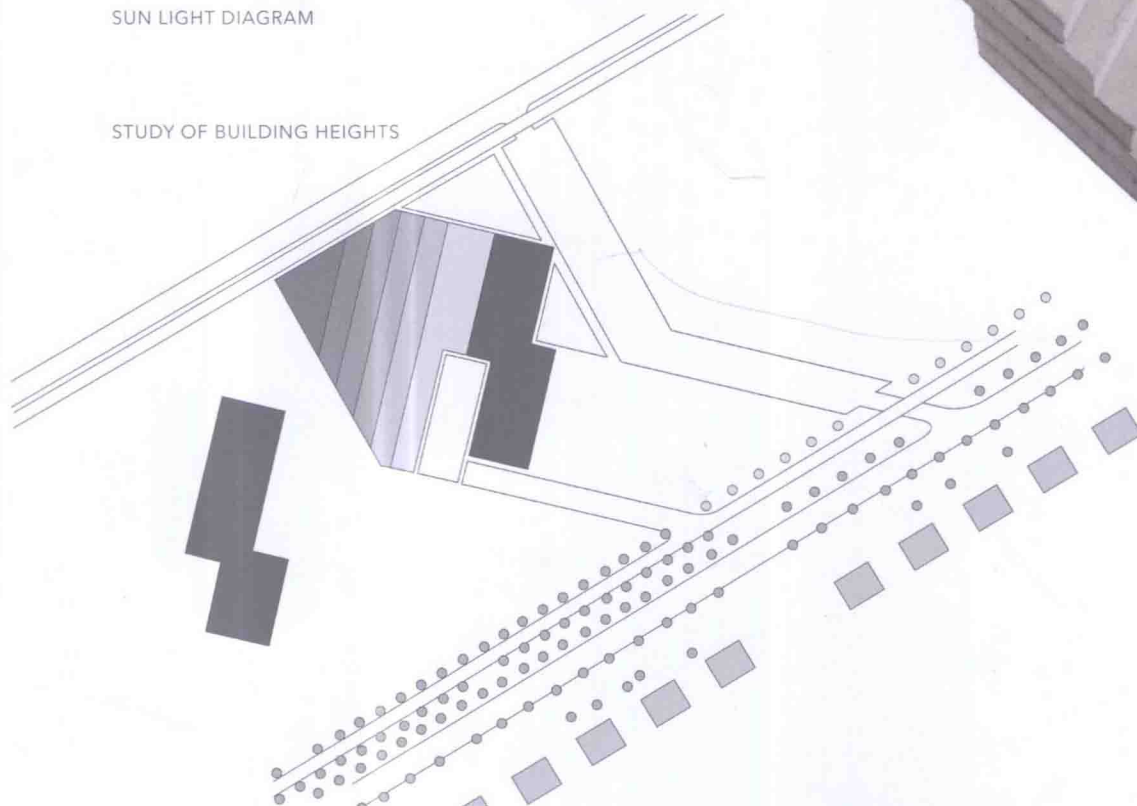


1-1 Section



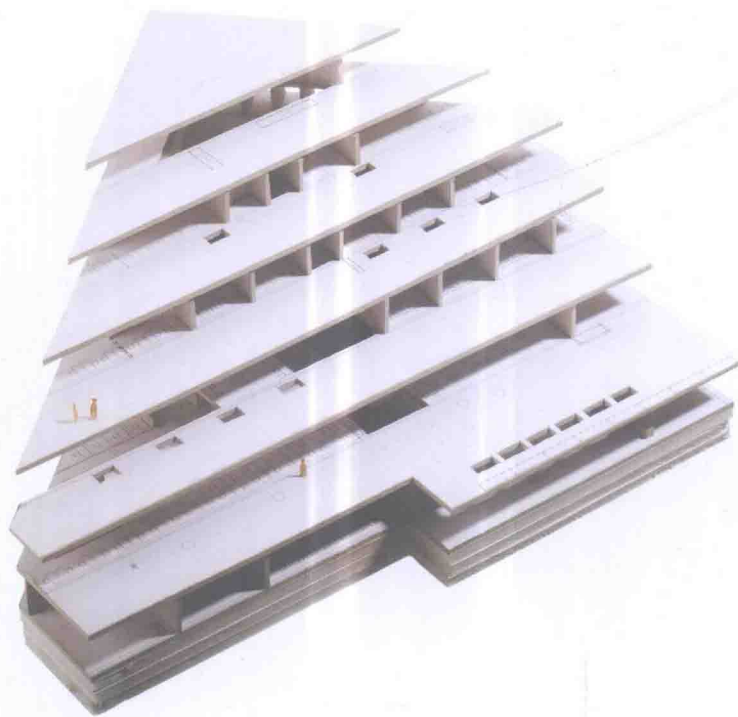
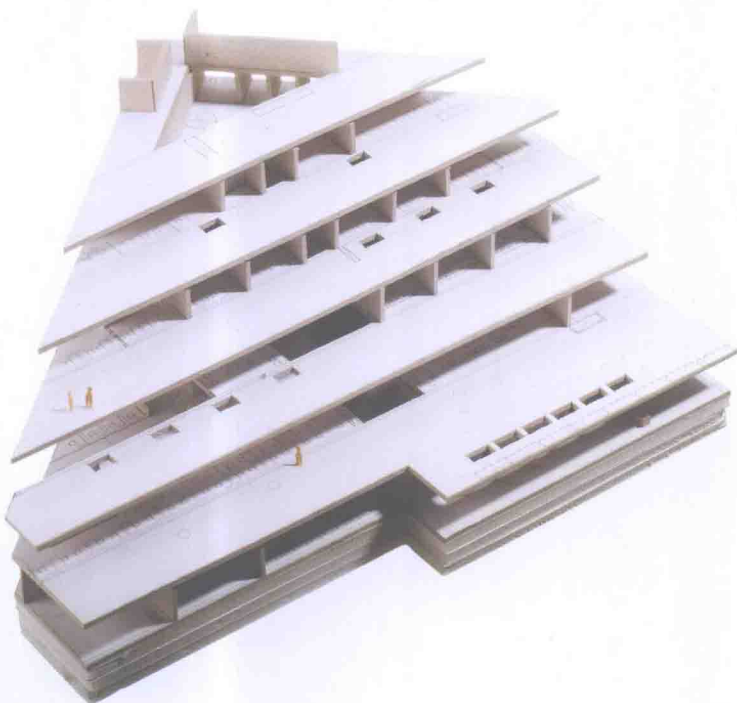
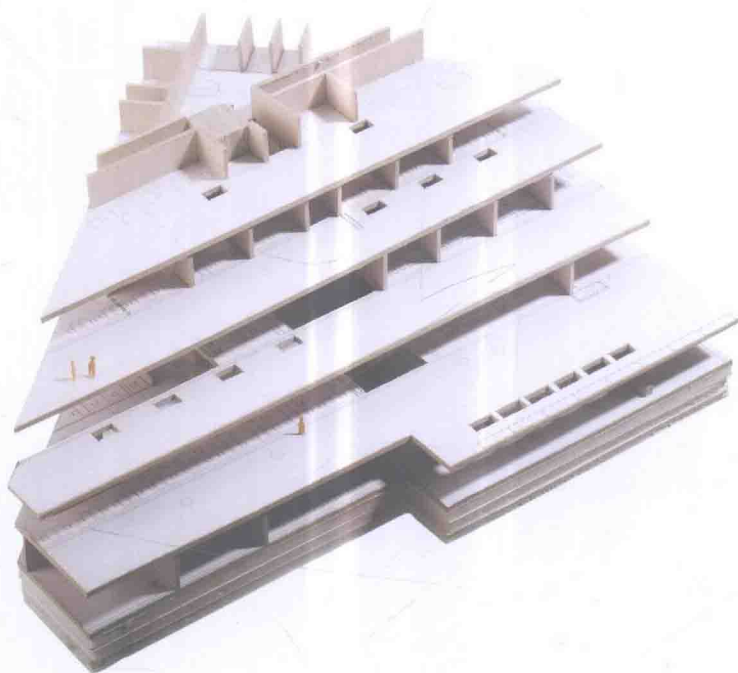
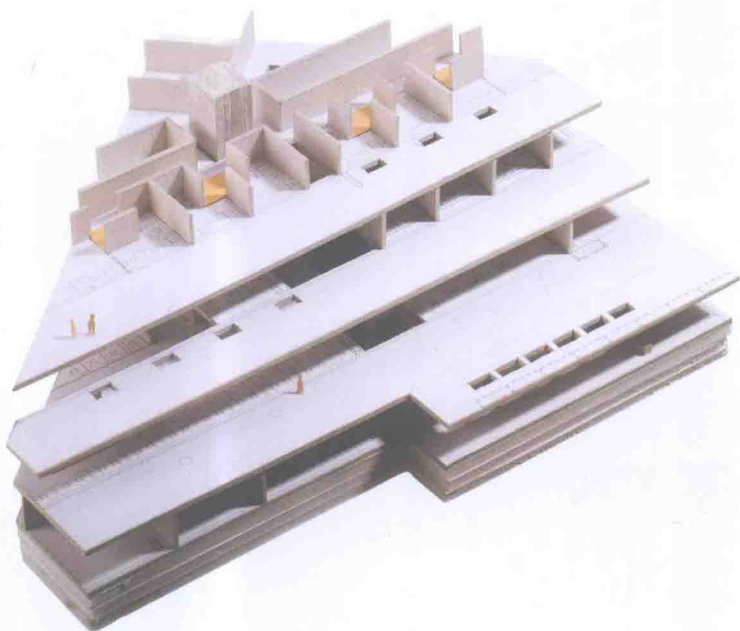
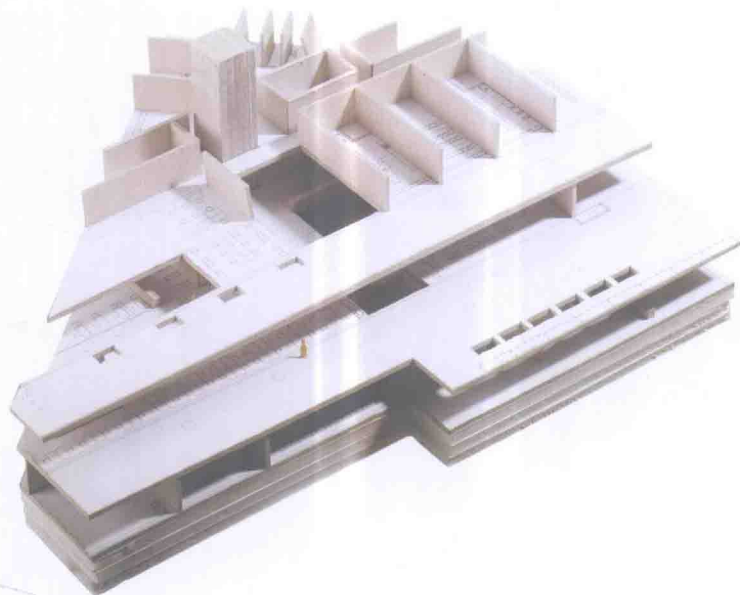
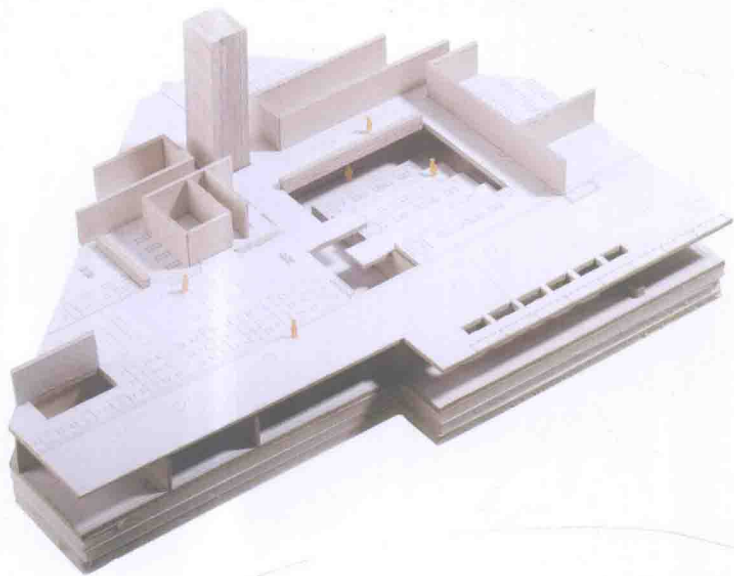
SUN LIGHT DIAGRAM

STUDY OF BUILDING HEIGHTS

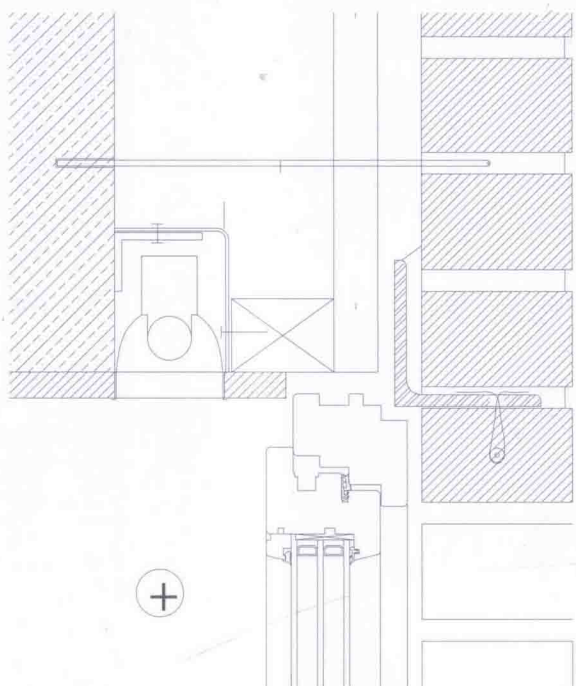


CONCEPT MODEL

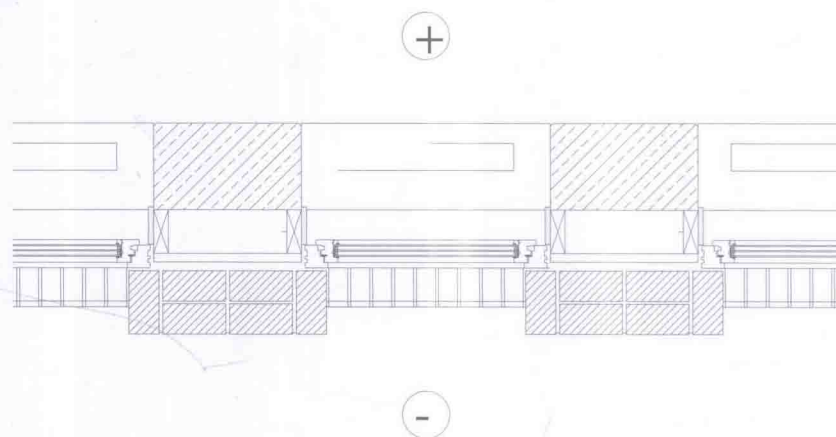
Tartu Health Care College
 Indrek Peil, Siiri Vallner KAVAKAVA
 Tartu, Estonia
 CONCEPT MODEL, SKETCHES
 kavakava drawing 02



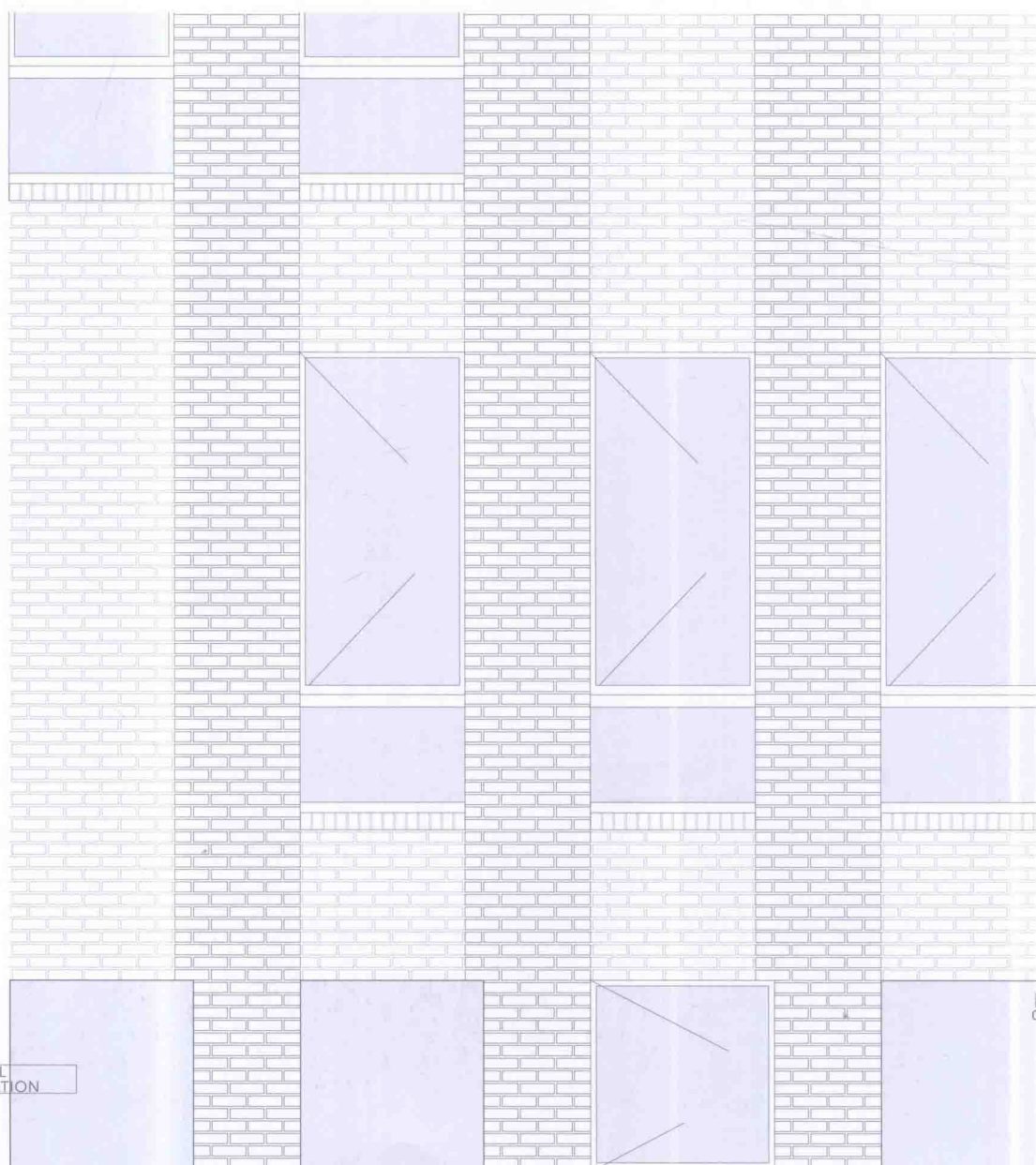




4 WINDOW DETAIL



1 DETAIL PLAN



3 DETAIL ELEVATION

Tartu Health Care College
 Indrek Peil, Siiri Vallner
 KAVAKAVA
 Tartu, Estonia
 CONSTRUCTION DETAIL

